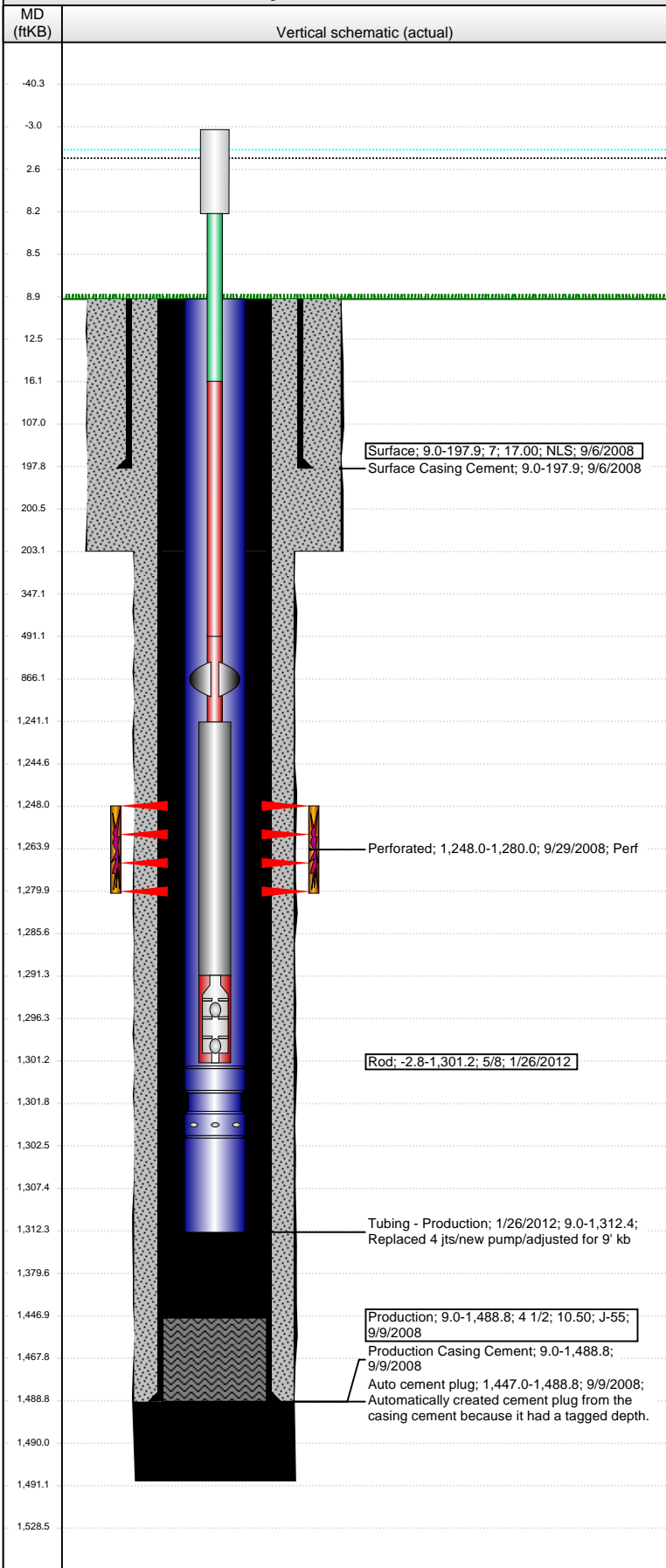


Well Name: KELLER FARMS 23-12

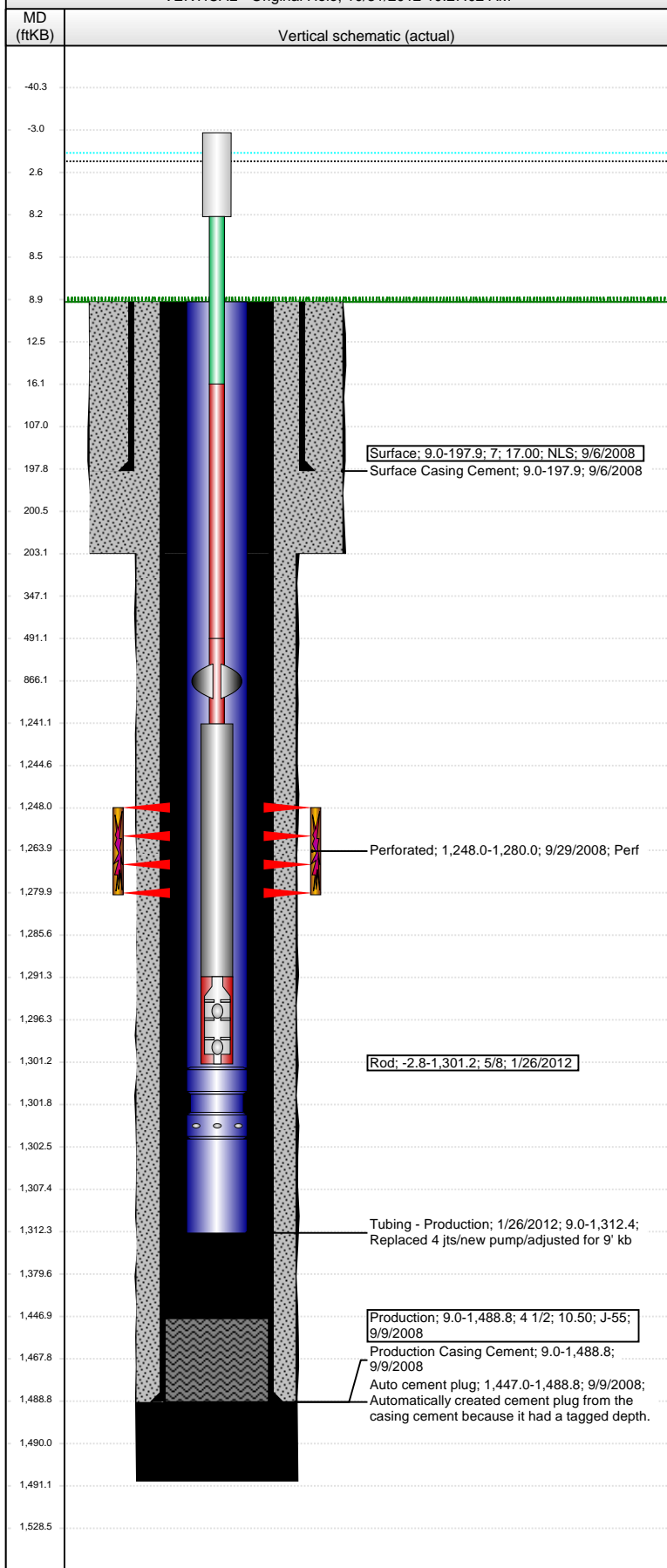
VERTICAL - Original Hole, 10/31/2012 10:27:02 AM



Well Header									
API 15-023-21125		Business Unit ROCKIES		District 12		Well Config VERTICAL			
Original KB Elevation (ft) 3,335.00		KB - GL / MSL (ftKB) 9.00		Spud Date 9/6/2008		P & A Date			
Comment									
Directions To Well ROAD 22 & W, 1/2 MILE EAST, 1/2 MILE NORTH, WEST INTO									
Congressional Location									
Quarter 1 S2	Quarter 2 N2	Quarter 3 NE	Quarter 4 NW	Section 12	Township 2 S	Twnshp N...	Range 39	Rng E/W Dir W	
Bottom Hole Location									
North-South Distance (ft)		From N or S Line		East-West Distance (ft)		From E or W Line			
Plug Back Total Depths									
Date	Depth (ftKB)	Method		Com					
9/9/2008	1,454.9	CASING TALLY		Latch Down Collar					
9/29/2008	1,447.0	CASED HOLE LOG		CBL					
Wellbore Sections									
Section Des		Size (in)		Act Top (ftKB)		Act Btm (ftKB)			
SURFACE		9 7/8		9.0		203.0			
PRODUCTION		6 1/4		203.0		1,491.0			
Zone Statuses									
Zone Name		Status Date		Status		Job			
NIOBRARA		1/19/2009		PR		DRILLING/COMPLETION - ORIGINAL, 9/6/2008 10:30			
Casing Strings									
Surface, 197.9ftKB									
Casing Description		Run Date	OD (in)	Wt/Len (l...)	Grade	Top (ftKB)	Set Depth...		
Surface		9/6/2008	7	17.00	NLS	9.0	197.9		
Production, 1,488.8ftKB									
Casing Description		Run Date	OD (in)	Wt/Len (l...)	Grade	Top (ftKB)	Set Depth...		
Production		9/9/2008	4 1/2	10.50	J-55	9.0	1,488.8		
Cement									
Description					Top Depth (ftKB)		Bottom Depth (ftKB)		
Surface Casing Cement					9.0		197.9		
Description					Top Depth (ftKB)		Bottom Depth (ftKB)		
Production Casing Cement					9.0		1,488.8		
Tubing Components									
Item Des		OD (in)	Wt (lb/ft)	Grade	Jts	Len (ft)	Btm (ftKB)	Btm (TVD) (ftKB)	
Tubing		2 3/8	4.70	J-55	42	1,292.28	1,301.3		
Pump Seating Nipple		2 3/8			1	1.12	1,302.4	1,302.2	
Tubing		2 3/8	4.70	J-55	1	10.00	1,312.4	1,312.2	
Rods & Pumps									
Rod Description					Run Date		Set Depth (ftKB)		
Rod					1/26/2012		1,301.2		
Comment replaced pump/adjusted for 9' kb									
Item Description					OD Nominal (in)	Joints	Length (ft)		
Polished Rod					1 1/8	1	11.00		
Item Description					OD Nominal (in)	Joints	Length (ft)		
Pony Rod					5/8	2	8.00		
Item Description					OD Nominal (in)	Joints	Length (ft)		
Sucker Rod					5/8	19	475.00		
Item Description					OD Nominal (in)	Joints	Length (ft)		
Rod Guide 100 ROD GUIDES ON BOTTOM 30 RODS					5/8	30	750.00		
Item Description					OD Nominal (in)	Joints	Length (ft)		
Sinkers Bar					1 1/4	2	50.00		
Item Description					OD Nominal (in)	Joints	Length (ft)		
Rod Insert Pump RWBC W/ SCREEN					1 1/4	1	10.00		
API Pump Type			Barrel Length (ft)		Seating Assembly Type				
R			10.00		C				
Item Description					OD Nominal (in)	Joints	Length (ft)		
Rod Guide					2	100			
Perforation Data									
Zone		Bnch/St g	Entered Shot Total	Top (ftKB)	Btm (ftKB)	Date			
NIOBRARA, Original Hole		1	96	1,248.00	1,280.00	9/29/2008			

Well Name: KELLER FARMS 23-12

VERTICAL - Original Hole, 10/31/2012 10:27:02 AM



Stimulations & Treatments

Date	Zone	Primary Job Type
10/8/2008	NIOBRARA, Original Hole	DRILLING/COMPLETION - ORIGINAL
Technical Result	Tech Result Details	Tech Result Note
Success	According to Plan	
Comment		
Frac niobrara Interval 1248'-1280'		
500 gal 7.5% HCL Acid Breakdown		
12,000 gal 25% CO2 FoamGel Pad		
31,879 gal 25% CO2 FoamGel w/ 100,280# 16/30 sand		
AIR 13.7 bpm @ 516#		

Other In Hole

Run Date	Des	OD (in)	Top (ftKB)	Btm (ftKB)

Logs

Date	Type	Top (ftKB)	Btm (ftKB)
9/9/2008	DIFL/DENS/GR/GRD/CAL	201.0	1,485.0
9/9/2008	TRIPLE COMBO	201.0	1,485.0
9/29/2008	CBL/CCL/GR	9.0	1,447.0