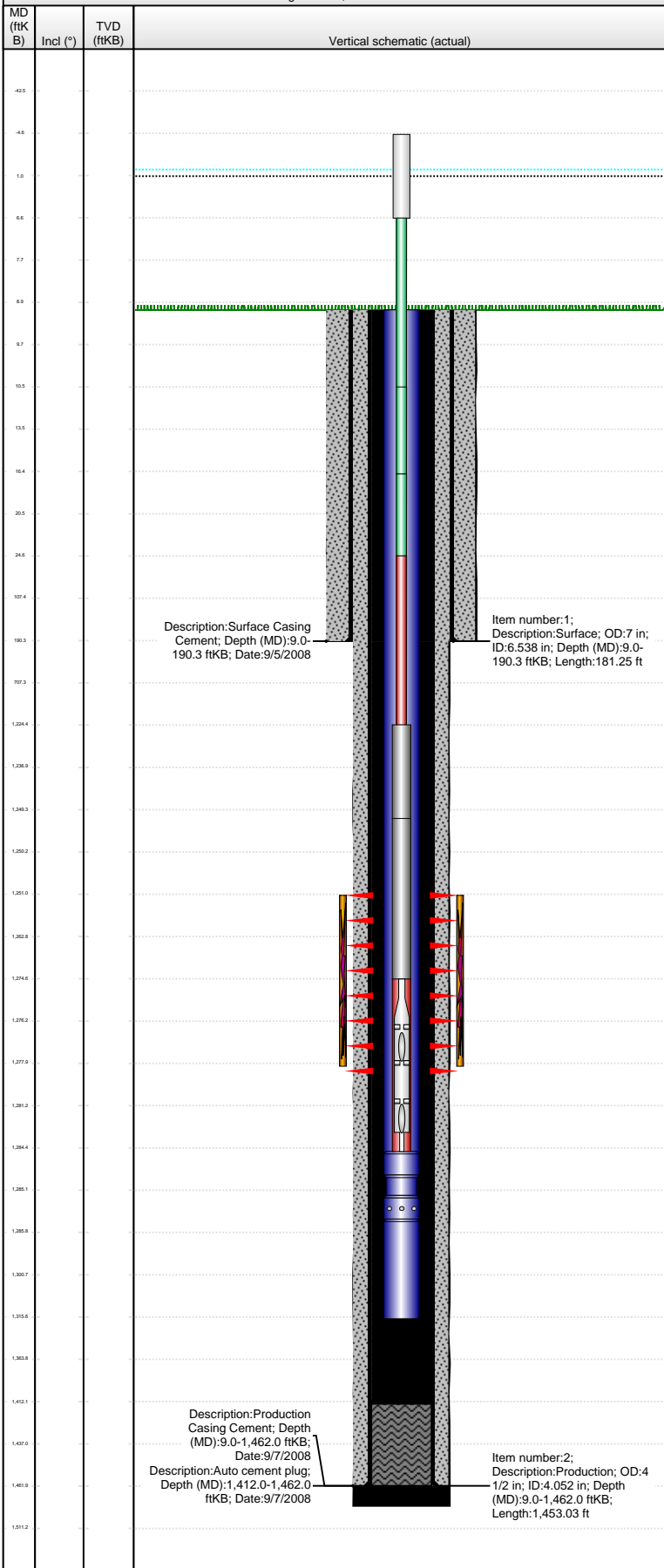


Well Name: KELLER FARMS 24-12

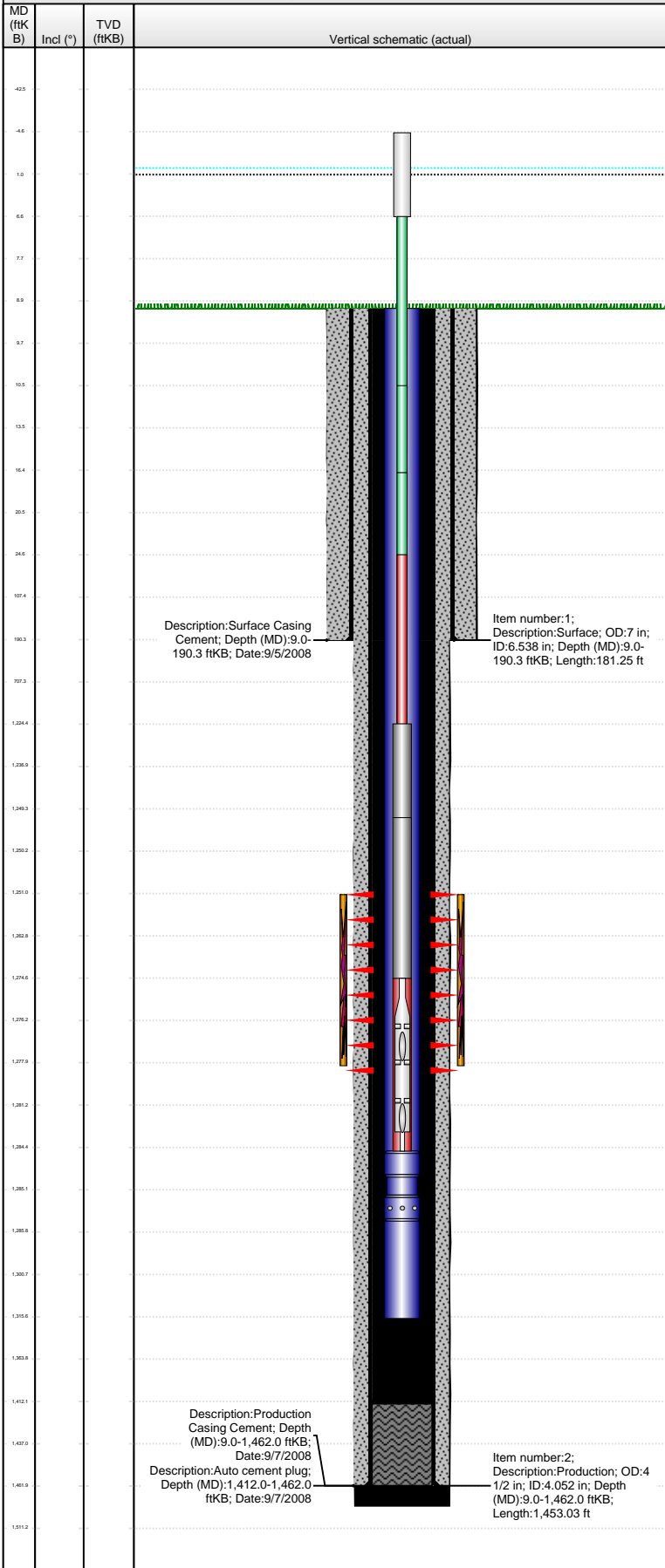
VERTICAL - Original Hole, 3/18/2013 8:19:02 AM



Well Header							
API 15-023-21123		Business Unit ROCKIES		District 12		Well Config VERTICAL	
Original KB Elevation (ft) 3,332.00		KB - GL / MSL (ftKB) 9.00		Spud Date 9/4/2008		P & A Date	
Comment							
Directions To Well ROAD 22 & W, 1/2 MILE EAST, 1/2 MILE NORTH, SOUTHWEST INTO							
Congressional Location							
Quarter 1 NW	Quarter 2 NE	Quarter 3 SE	Quarter 4 SW	Section 12	Township 2 S	Twnshp N... 39 W	Range 39 W
Bottom Hole Location							
North-South Distance (ft)		From N or S Line		East-West Distance (ft)		From E or W Line	
Plug Back Total Depths							
Date	Depth (ftKB)	Method		Com			
9/7/2008	1,426.6	CASING TALLY					
10/29/2008	1,412.0	CASED HOLE LOG		CBL			
Wellbore Sections							
Section Des		Size (in)		Act Top (ftKB)		Act Btm (ftKB)	
SURFACE		9 7/8		9.0		195.0	
PRODUCTION		6 1/4		195.0		1,486.0	
Zone Statuses							
Zone Name	Status Date	Status		Job			
NIOBRARA	1/19/2009	PR		DRILLING/COMPLETION - ORIGINAL, 9/4/2008 09:00			
Casing Strings							
Surface, 190.3ftKB							
Casing Description	Run Date	OD (in)	Wt/Len (L...)	Grade	Top (ftKB)	MD (ftKB)	
Surface	9/4/2008	7	17.00	NLS	9.0	190.3	
Production, 1,462.0ftKB							
Casing Description	Run Date	OD (in)	Wt/Len (L...)	Grade	Top (ftKB)	MD (ftKB)	
Production	9/7/2008	4 1/2	10.50	J-55	9.0	1,462.0	
Cement							
Description					Top Depth (ftKB)		Bottom Depth (ftKB)
Surface Casing Cement					9.0		190.3
Description					Top Depth (ftKB)		Bottom Depth (ftKB)
Production Casing Cement					9.0		1,462.0
Tubing Components							
Item Des	OD (in)	Wt (lb/ft)	Grade	Jts	Len (ft)	Btm (ftKB)	Btm (TVD) (ftKB)
EUE 8rd Tubing	2 3/8	4.70	J-55	41	1,275.50	1,284.5	
Pump Seating Nipple	2 3/8		J55	1	1.10	1,285.6	1,285.5
Mud Anchor	2 3/8	4.70	J55	1	30.00	1,315.6	1,315.5
Rods & Pumps							
Rod Description				Run Date		Set Depth (ftKB)	
Rod				2/24/2011		1,284.5	
Comment SAND PUMP & REPLACED PUMP							
Item Description					OD Nominal (in)		Joints
Polished Rod					1 1/8		1
Item Description					OD Nominal (in)		Joints
Pony Rod					5/8		1
Item Description					OD Nominal (in)		Joints
Pony Rod					5/8		1
Item Description					OD Nominal (in)		Joints
Pony Rod					5/8		1
Item Description					OD Nominal (in)		Joints
Sucker Rods					5/8		48
Item Description					OD Nominal (in)		Joints
Sinker Bar					1 1/4		1
Item Description					OD Nominal (in)		Joints
Sinker Bar					1 1/4		1
Item Description					OD Nominal (in)		Joints
Rod Insert Pump					1 1/4		1
API Pump Type				Barrel Length (ft)		Seating Assembly Type	
R				10.00		C	
Perforation Data							
Zone		Bnch/St g	Entered Shot Total	Top (ftKB)	Btm (ftKB)	Date	
NIOBRARA, Original Hole		1	81	1,251.00	1,278.00	10/29/2008	

Well Name: KELLER FARMS 24-12

VERTICAL - Original Hole, 3/18/2013 8:19:03 AM



Stimulations & Treatments

Date	Zone	Primary Job Type
11/13/2008	NIOBRARA, Original Hole	DRILLING/COMPLETION - ORIGINAL
Technical Result	Tech Result Details	Tech Result Note
Success	According to Plan	

Comment
 Frac Niobrara Interval 1251'-1278'
 500 gal 7.5% HCL Acid Breakdown
 12,000 gal 25% CO2 FoamGel Pad
 31,881 gal 25% CO2 FoamGel w/ 100,260# 16/30 Daniels sand
 BDP 576# AIR 16.7 bpm @ 535#
 ISIP 493#, 5 min 471#, 10 min 470#
 20 Ton CO2 - 44,381 gal Foam/Flid - 378 bbls Fluid

Other In Hole

Run Date	Des	OD (in)	Top (ftKB)	Btm (ftKB)

Logs

Date	Type	Top (ftKB)	Btm (ftKB)
9/6/2008	TRIPLE COMBO	192.0	1,478.0
9/6/2008	DIFL/DENS/GR/GRD/CAL	192.0	1,486.0
10/29/2008	PERFORATION	100.0	1,412.0
10/29/2008	CBL/CCL/GR	100.0	1,412.0