

TOPOGRAPHIC LAND SURVEYORS

6709 NORTH CLASSEN BLVD., OKLA. CITY, OKLA. 73116 * LOCAL (405) 843-4847 * OUT OF STATE (800) 654-3219
 Certificate of Authorization No. LS-99, Exp. Dec. 31, 2013

CHAUTAQUA

County, Kansas

160'FNL - 595'FEL Section 23 Township 32S Range 9E P.M.



GRID
 NAD-27
 KANSAS SOUTH
 US FEET
 3.280833 Ft. = 1 Meter
 0' 500' 1000'
 SCALE:
 1" = 1000'

- NOTE -

TOTAL VERTICAL DEPTH OF 1900'
 PROVIDED BY OPERATOR LISTED

Distances shown in (parenthesis) are calculated based upon the Quarter Section being 2640 feet; those shown in [brackets] are based on GLO (General Land Office) distances and have not been measured.

Operator: NEMAHA OIL AND GAS

Lease Name: LAMPSON

Topography & Vegetation Loc. fell on West side of existing level pad, 100' West of Lampson 1A-23-32-9H

Good Drill Site? Yes Reference Stakes or Alternate Location Stakes Set None

Best Accessibility to Location From North off county road

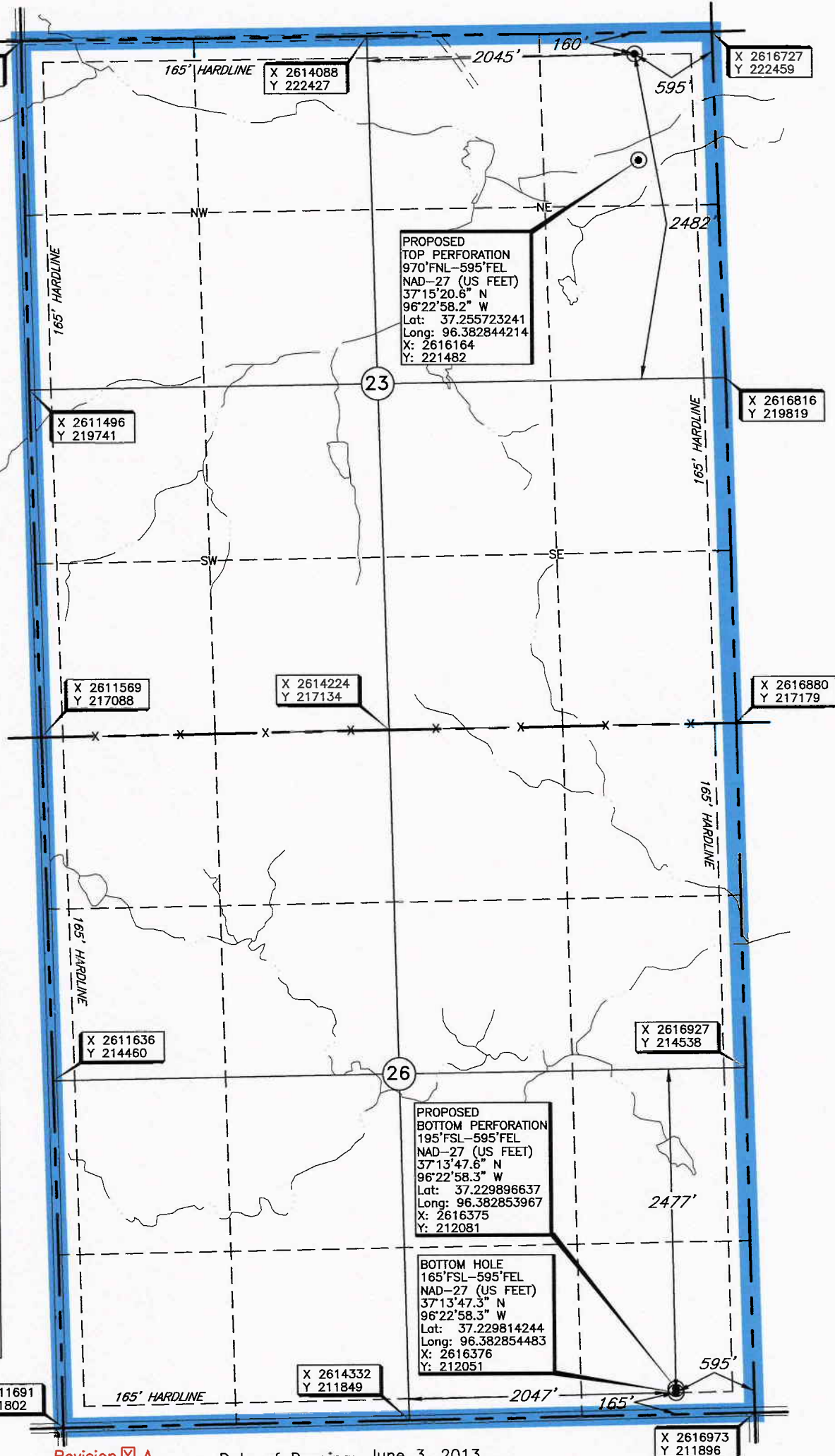
Distance & Direction From Cedarvale, Kansas, go ± 5.5 miles East on US Hwy 160, then ± 10 miles North on

County Road 8, then go ± 0.5 mile East to the North Quarter Corner of Section 23, T32S - R9E.

ELEVATION:

Well No.: 3B-23-32-9H
 1061 Gr. on Level Pad

BOTTOM HOLE, TOP PERF. AND BOTTOM PERF INFORMATION PROVIDED BY OPERATOR LISTED, NOT SURVEYED; DISTANCE BETWEEN DRILL PATH IS CALCULATED AND CORNER COORDINATES ARE TAKEN FROM POINTS SURVEYED IN THE FIELD.



Revision A Date of Drawing: June 3, 2013
 Invoice # 202043 Date Staked: May 29, 2013 NMB

CERTIFICATE:

I, T. Wayne Fisch a Kansas Licensed Land Surveyor and an authorized agent of Topographic Land Surveyors, do hereby certify that the above described well location was surveyed and staked on the ground as shown herein.

Kansas Lic. No. 1213



(gathered with a receiver with ± 1.0 accuracy.)

DATUM: NAD-27
 LAT: 37°15'28.6" N
 LONG: 96°22'58.3" W
 LAT: 37.257948211° N
 LONG: 96.382874504° W
 STATE PLANE
 COORDINATES (US Feet):
 ZONE: KS SOUTH
 X: 2616137
 Y: 222292

TOPOGRAPHIC LAND SURVEYORS

6709 NORTH CLASSEN BLVD., OKLA. CITY, OKLA. 73116 * LOCAL (405) 843-4847 * OUT OF STATE (800) 654-3219
 Certificate of Authorization No. LS-99, Exp. Dec. 31, 2013

CHAUTAUQUA

County, Kansas

160'FNL - 595'FEL Section 23 Township 32S Range 9E P.M.



GRID
 NAD-27
 KANSAS SOUTH
 US FEET
 3.280833 Ft. = 1 Meter
 0' 500' 1000'
 SCALE:
 1" = 1000'

- NOTE -
 TOTAL VERTICAL DEPTH OF 1900'
 PROVIDED BY OPERATOR LISTED

Distances shown in (parenthesis) are calculated based upon the Quarter Section being 2640 feet, those shown in [brackets] are based on GLO (General Land Office) distances and have not been measured.

Operator: NEMAHA OIL AND GAS

Lease Name: LAMPSON

Topography & Vegetation Loc. fell on West side of existing level pad, 100' West of Lampson 1A-23-32-9H

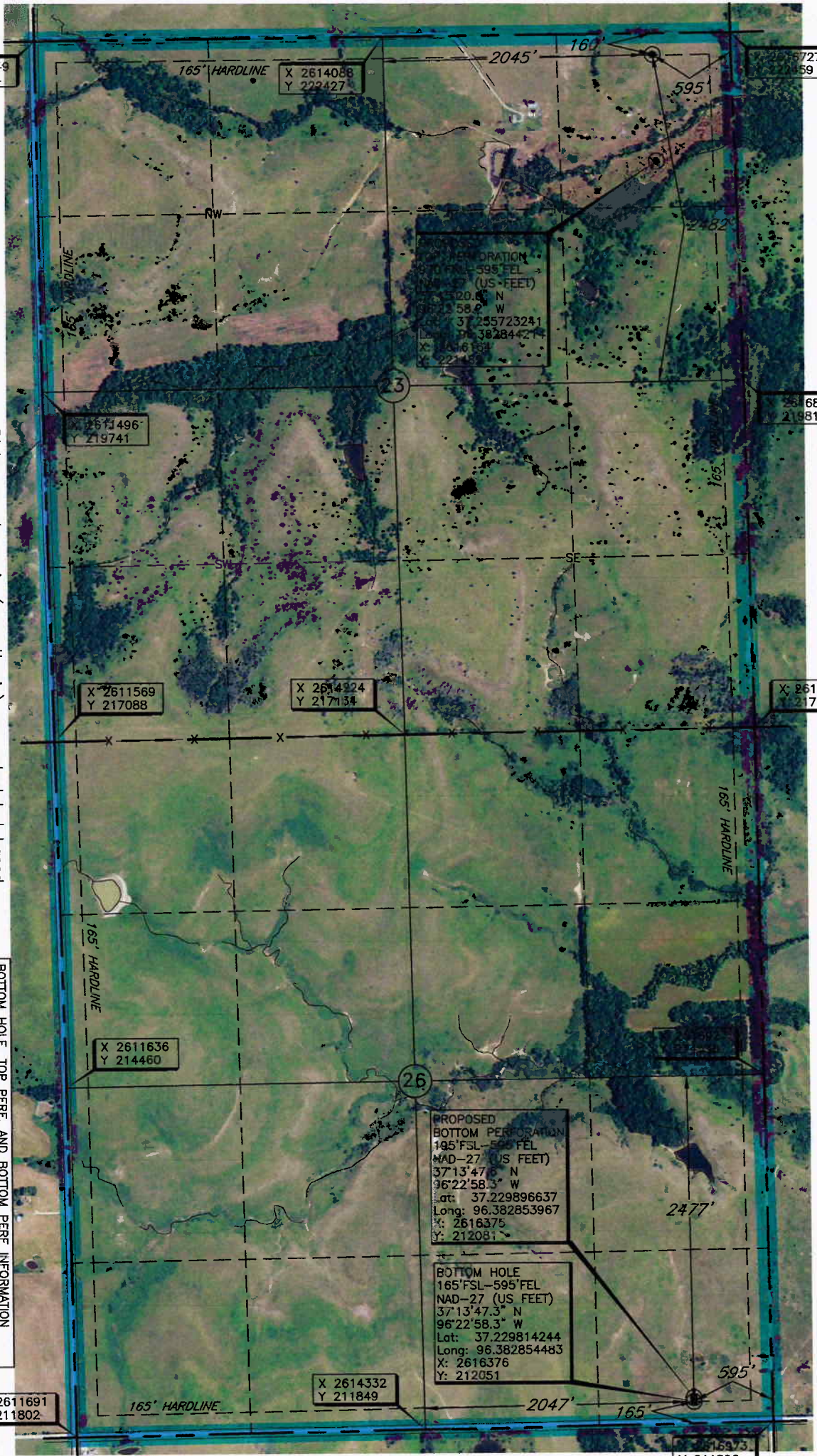
Good Drill Site? Yes Reference Stakes or Alternate Location Stakes Set None

Best Accessibility to Location From North off county road

Distance & Direction From Cedarvale, Kansas, go ± 5.5 miles East on US Hwy 160, then ± 10 miles North on County Road 8, then go ± 0.5 mile East to the North Quarter Corner of Section 23, T32S - R9E.

Well No.: 3B-23-32-9H
 ELEVATION:
 1061' Gr. on Level Pad

BOTTOM HOLE TOP PERF. AND BOTTOM PERF. INFORMATION PROVIDED BY OPERATOR LISTED. NOT SURVEYED. DISTANCE BETWEEN DRILL PATH IS CALCULATED AND CORNER COORDINATES ARE TAKEN FROM POINTS SURVEYED IN THE FIELD.



Revision A Date of Drawing: June 3, 2013
 Invoice # 202043 Date Staked: May 29, 2013 NMB

CERTIFICATE:

I, T. Wayne Fisch a Kansas Licensed Land Surveyor and an authorized agent of Topographic Land Surveyors, do hereby certify that the above described well location was surveyed and staked on the ground as shown herein.

Kansas Lic. No. 1213



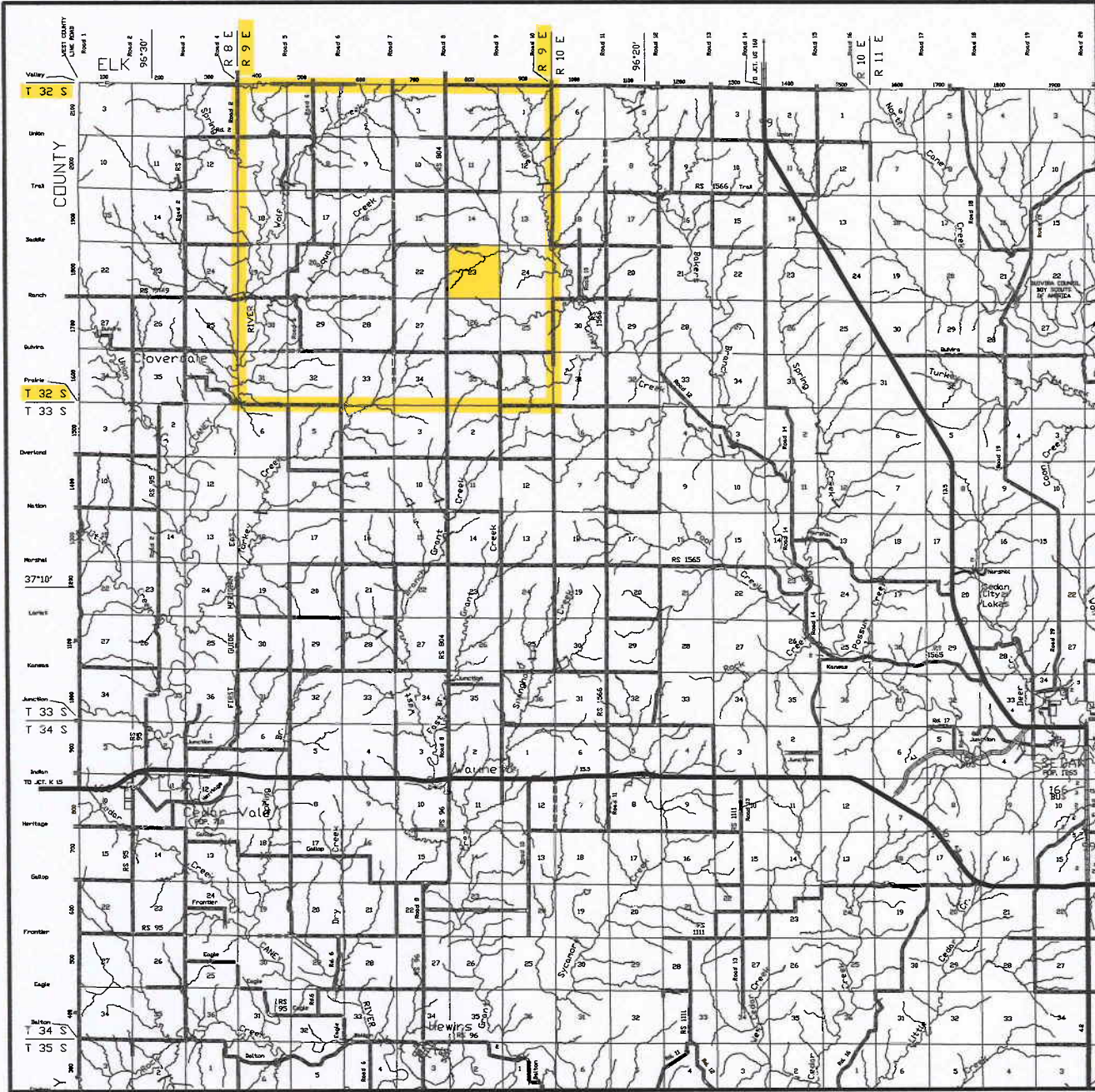
DATUM: NAD-27
 LAT: 37°15'28.6" N
 LONG: 96°22'58.3" W
 LAT: 37.257948211° N
 LONG: 96.382874504° W
 STATE PLANE
 COORDINATES (US Feet):
 ZONE: KS SOUTH
 X: 2616137
 Y: 222292

was
 receiver
 with
 ± 1.0 accuracy.
 information
 furnished
 by this

TOPOGRAPHIC LAND SURVEYORS

Surveying and Mapping for the Energy Industry
 6709 North Classen Blvd. Oklahoma City, OK 73116 www.topographic.com
 Telephone Numbers: Local (405) 843-4847 Toll Free (800) 654-3219

VICINITY MAP



Scale: 1" = 3 Miles

Sec. 23 Twp. 32S Rng. 9E

County CHAUTAUQUA State KS

Operator NEMAHA OIL AND GAS

TOPOGRAPHIC
 SURVEYING • MAPPING • GIS • GPS
LAND SURVEYORS

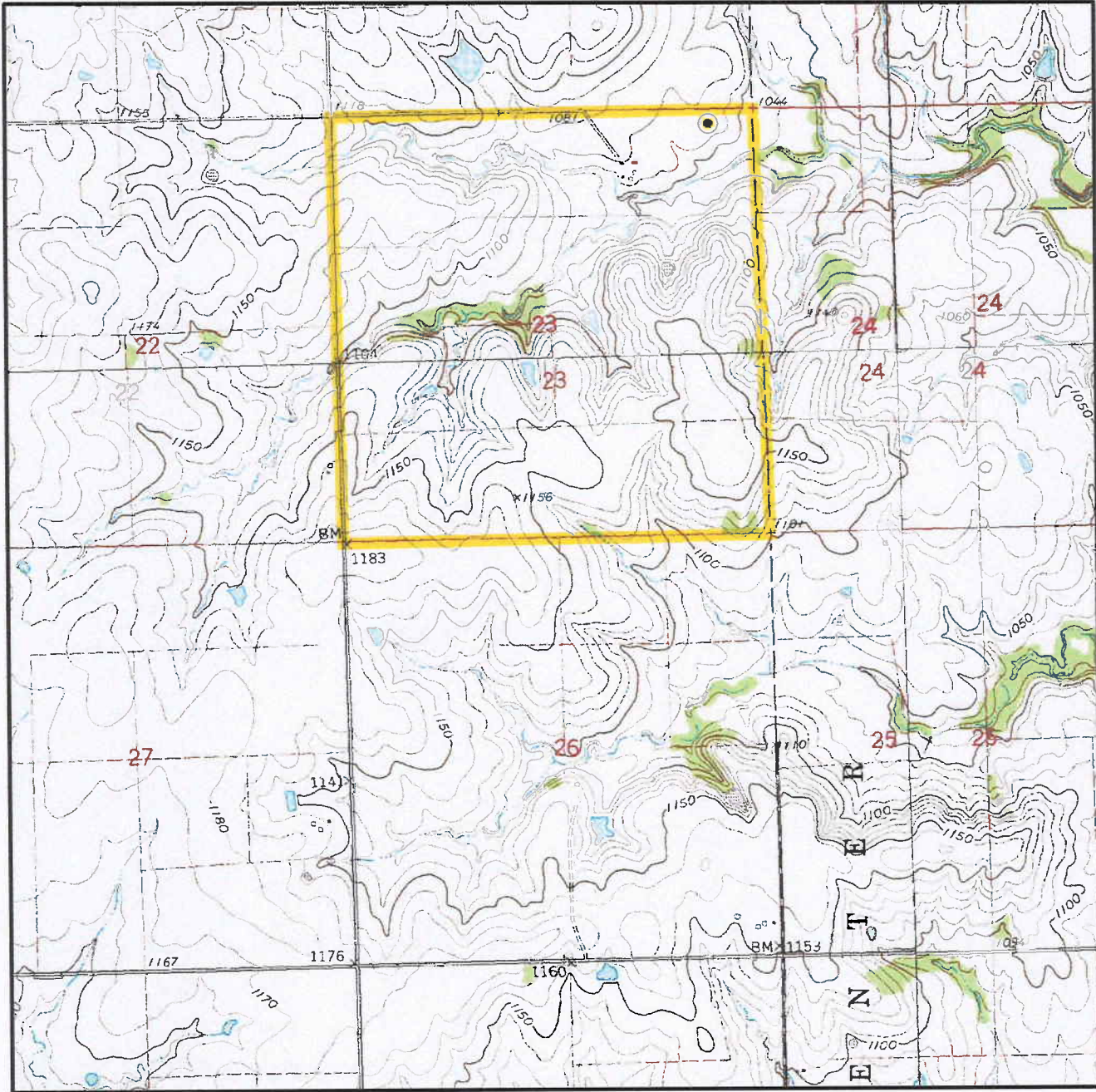
TOPOGRAPHIC LAND SURVEYORS

Surveying and Mapping for the Energy Industry

6709 North Classen Blvd. Oklahoma City, OK 73116 www.topographic.com

Telephone Numbers: Local (405) 843-4847 Toll Free (800) 654-3219

LOCATION & ELEVATION VERIFICATION MAP



Sec. 23 Twp. 32S Rng. 9E

County CHAUTAUQUA State KS

Operator NEMAHA OIL AND GAS

Description 160'FNL - 595'FEL

Lease LAMPSON 3B-23-32-9H

Elevation 1061' Gr. on Level Pad

U.S.G.S. Topographic
Quadrangle Map GRENOLA, KS

Above Background Data from
U.S.G.S. Topographic Map

Scale: 1"=2000'

Contour Interval 10'

This location has been very carefully staked on the ground according to the best official survey records, maps and photographs available to us, but its accuracy is not guaranteed. When elevation is shown hereon it is the ground elevation of the location stake.

Review this plat and inform us immediately of any possible discrepancy.

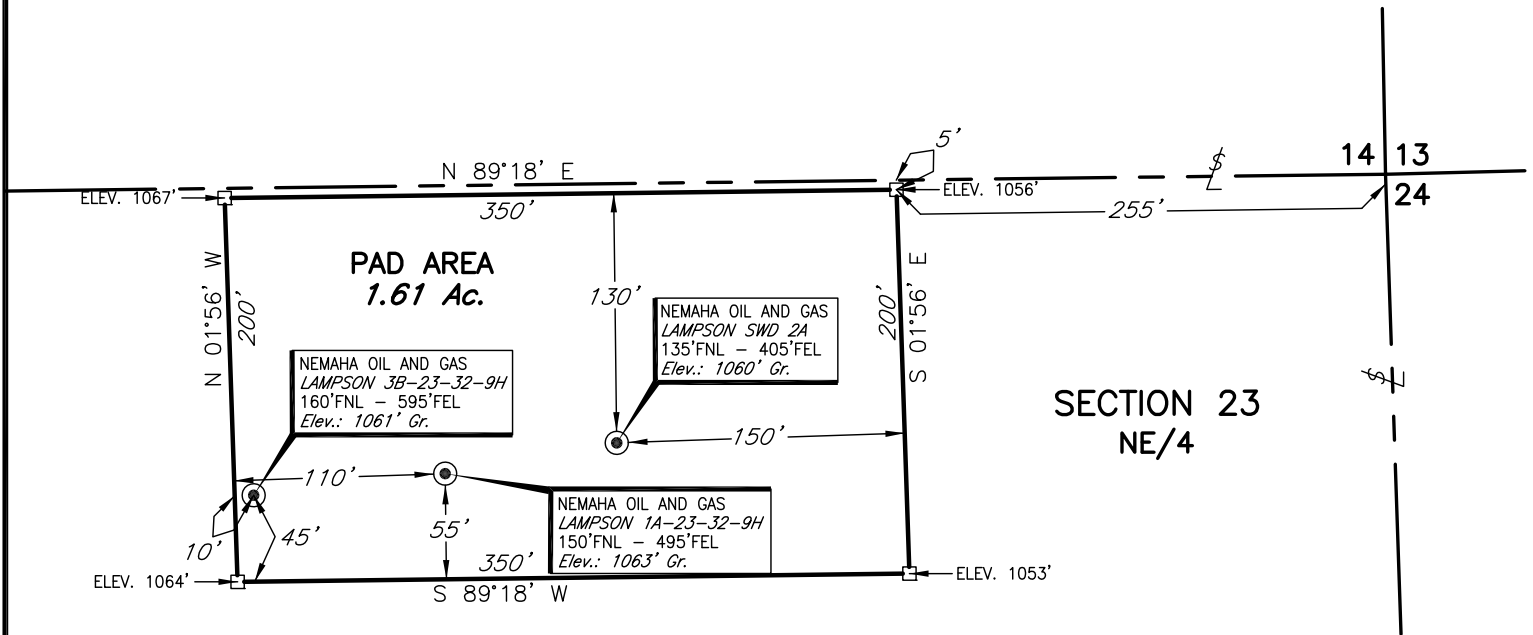
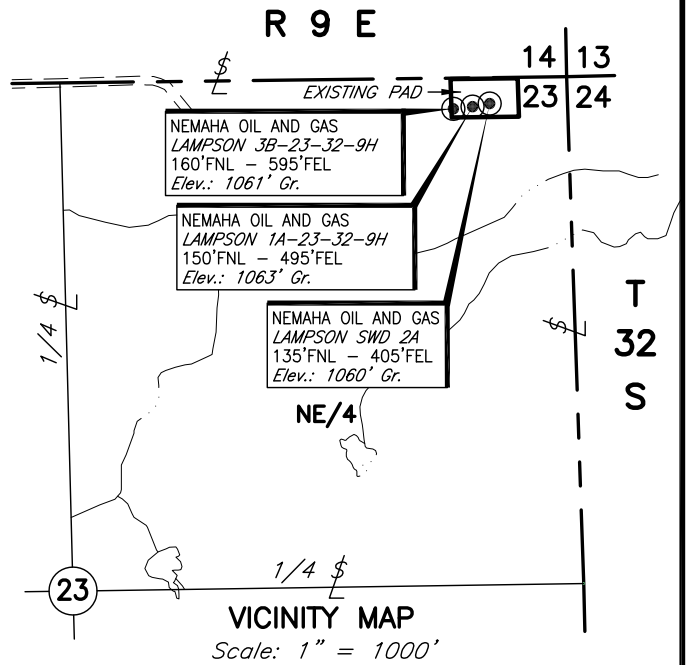
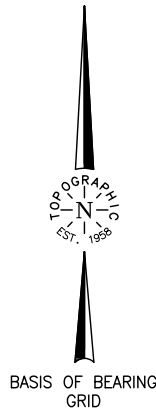
TOPOGRAPHIC

SURVEYING • MAPPING • GIS • GPS

LAND SURVEYORS

May. 29, 2013

T 32 S - R 9 E



PLAT SHOWING
 EXISTING PAD AREA IN THE
 NE/4 OF SECTION 23, T32S - R9E
 CHAUTAUQUA COUNTY, KANSAS

This plat was prepared exclusively for				NEMAHA OIL & GAS		SCALE: 1"=100'
TULSA, OKLAHOMA				and may not be relied upon by any other entity without the written consent of Topographic Land Surveyors of Oklahoma.		DATE: 12/14/12
1	ADDED LAMPSON 3B	5/31/13	NMB			FILE: L4003A.DWG
NO.	REVISION	DATE	BY			DRAWING NUMBER:
						114028-L4-003-A
SURV. BY: JM 12/13/12				SURVEYING AND MAPPING BY		SHEET 1 OF 1
DRAWN BY: NMB				TOPOGRAPHIC LAND SURVEYORS		
APPROVED BY: MBB				6709 N. Classen, Okla. City, OK. 73116 (405) 843-4847		
				Certificate of Authorization No. LS-99, Exp. December 31, 2013		