



DRILL STEM TEST REPORT

Prepared For: **Carrie Exploration & Development**

210 w 22nd Street Hays Ks 67601

ATTN: Jeff Lawler

Ricker #C-1

15-20s-10w Rice

Start Date: 2013.06.11 @ 15:14:00

End Date: 2013.06.11 @ 20:03:00

Job Ticket #: 17469 DST #: 3

Superior Testers Enterprises LLC
PO Box 138 Great Bend KS 67530
1-800-792-6902

Printed: 2013.06.11 @ 20:12:30



DRILL STEM TEST REPORT

Carrie Exploration & Development
 210 w 22nd Street Hays Ks 67601
 ATTN: Jeff Lawler

15-20s-10w Rice
Ricker #C-1
 Job Ticket: 17469 **DST#: 3**
 Test Start: 2013.06.11 @ 15:14:00

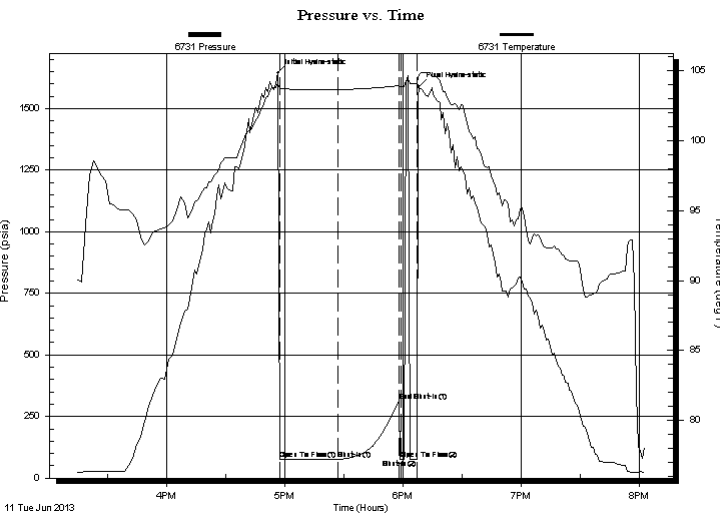
GENERAL INFORMATION:

Formation: **Lower Lansing**
 Deviated: No Whipstock: ft (KB)
 Time Tool Opened: 16:57:30
 Time Test Ended: 20:03:00
 Interval: **3240.00 ft (KB) To 3330.00 ft (KB) (TVD)**
 Total Depth: 3330.00 ft (KB) (TVD)
 Hole Diameter: 7.88 inches Hole Condition: Fair
 Test Type: Conventional Bottom Hole (Initial)
 Tester: Jared Scheck
 Unit No: 3320-Great Bend-50
 Reference Elevations: 1837.00 ft (KB)
 1829.00 ft (CF)
 KB to GR/CF: 8.00 ft

Serial #: 6731

Press@RunDepth: 75.30 psia @ ft (KB) Capacity: 5000.00 psia
 Start Date: 2013.06.11 End Date: 2013.06.11 Last Calib.: 2013.06.11
 Start Time: 15:14:00 End Time: 20:03:00 Time On Btm: 2013.06.11 @ 16:56:30
 Time Off Btm: 2013.06.11 @ 18:08:00

TEST COMMENT: 1st Opening 30 Minutes-Very weak blow died off 15 minutes into open
 1st Shut-in 30 Minutes-No blow back
 2nd Opening 15 Minutes-Very weak surge did not build flushed tool weak surge did not build
 2nd Shut-in -Pull Tool



PRESSURE SUMMARY

Time (Min.)	Pressure (psia)	Temp (deg F)	Annotation
0	1643.76	104.09	Initial Hydro-static
1	75.20	103.74	Open To Flow (1)
31	75.30	103.64	Shut-In(1)
62	311.25	103.92	End Shut-In(1)
63	77.77	103.87	Open To Flow (2)
71	77.84	104.05	Shut-In(2)
72	1589.08	104.69	Final Hydro-static

Recovery

Length (ft)	Description	Volume (bbl)
3.00	mud	0.04

Gas Rates

Choke (inches)	Pressure (psia)	Gas Rate (Mcf/d)



DRILL STEM TEST REPORT

Carrie Exploration & Development
 210 w 22nd Street Hays Ks 67601
 ATTN: Jeff Lawler

15-20s-10w Rice
Ricker #C-1
 Job Ticket: 17469 **DST#: 3**
 Test Start: 2013.06.11 @ 15:14:00

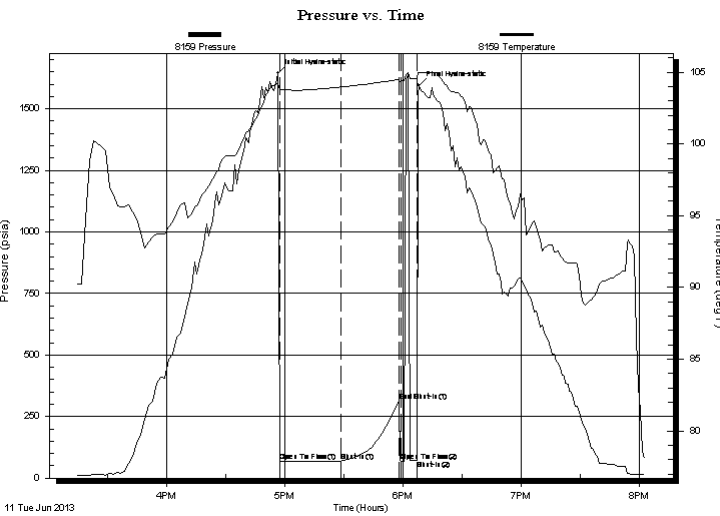
GENERAL INFORMATION:

Formation: **Lower Lansing**
 Deviated: No Whipstock: ft (KB)
 Time Tool Opened: 16:57:30
 Time Test Ended: 20:03:00
 Test Type: Conventional Bottom Hole (Initial)
 Tester: Jared Scheck
 Unit No: 3320-Great Bend-50
 Interval: **3240.00 ft (KB) To 3330.00 ft (KB) (TVD)**
 Reference Elevations: 1837.00 ft (KB)
 Total Depth: 3330.00 ft (KB) (TVD) 1829.00 ft (CF)
 Hole Diameter: 7.88 inches Hole Condition: Fair KB to GR/CF: 8.00 ft

Serial #: 8159

Press@RunDepth: 313.26 psia @ ft (KB) Capacity: 5000.00 psia
 Start Date: 2013.06.11 End Date: 2013.06.11 Last Calib.: 2013.06.11
 Start Time: 15:14:00 End Time: 20:03:00 Time On Btm: 2013.06.11 @ 16:56:30
 Time Off Btm: 2013.06.11 @ 18:08:00

TEST COMMENT: 1st Opening 30 Minutes-Very weak blow died off 15 minutes into open
 1st Shut-in 30 Minutes-No blow back
 2nd Opening 15 Minutes-Very weak surge did not build flushed tool weak surge did not build
 2nd SHut-in -Pull Tool



PRESSURE SUMMARY

Time (Min.)	Pressure (psia)	Temp (deg F)	Annotation
0	1644.68	104.19	Initial Hydro-static
1	67.82	103.81	Open To Flow (1)
32	69.77	103.96	Shut-In(1)
62	313.26	104.49	End Shut-In(1)
63	69.98	104.43	Open To Flow (2)
71	71.93	104.54	Shut-In(2)
72	1594.88	104.96	Final Hydro-static

Recovery

Length (ft)	Description	Volume (bbl)
3.00	mud	0.04

Gas Rates

Choke (inches)	Pressure (psia)	Gas Rate (Mcf/d)



DRILL STEM TEST REPORT

TOOL DIAGRAM

Carrie Exploration & Development
 210 w 22nd Street Hays Ks 67601
 ATTN: Jeff Lawler

15-20s-10w Rice
Ricker #C-1
 Job Ticket: 17469 **DST#: 3**
 Test Start: 2013.06.11 @ 15:14:00

Tool Information

Drill Pipe:	Length: 3240.00 ft	Diameter: 3.80 inches	Volume: 45.45 bbl	Tool Weight:	1000.00 lb
Heavy Wt. Pipe:	Length: 0.00 ft	Diameter: 0.00 inches	Volume: 0.00 bbl	Weight set on Packer:	20000.00 lb
Drill Collar:	Length: 0.00 ft	Diameter: 0.00 inches	Volume: 0.00 bbl	Weight to Pull Loose:	50000.00 lb
			<u>Total Volume: 45.45 bbl</u>	Tool Chased	1.00 ft
Drill Pipe Above KB:	20.00 ft			String Weight: Initial	38000.00 lb
Depth to Top Packer:	3240.00 ft			Final	38000.00 lb
Depth to Bottom Packer:	ft				
Interval between Packers:	90.00 ft				
Tool Length:	110.00 ft				
Number of Packers:	2	Diameter: 6.75 inches			
Tool Comments:					

Tool Description	Length (ft)	Serial No.	Position	Depth (ft)	Accum. Lengths
-------------------------	--------------------	-------------------	-----------------	-------------------	-----------------------

Shut-In Tool	5.00			3225.00	
Hydraulic Tool	5.00			3230.00	
Packer	5.00			3235.00	20.00 Bottom Of Top Packer
Packer	5.00			3240.00	
Anchor	4.00			3244.00	
Change Over Sub	0.75			3244.75	
Drill Pipe	63.50			3308.25	
Change Over Sub	0.75			3309.00	
Anchor	16.00			3325.00	
Recorder	1.00	6731	Inside	3326.00	
Recorder	1.00	8159	Outside	3327.00	
Bullnose	3.00			3330.00	90.00 Bottom Packers & Anchor

Total Tool Length: 110.00



DRILL STEM TEST REPORT

FLUID SUMMARY

Carrie Exploration & Development
 210 w 22nd Street Hays Ks 67601
 ATTN: Jeff Lawler

15-20s-10w Rice
Ricker #C-1
 Job Ticket: 17469 **DST#: 3**
 Test Start: 2013.06.11 @ 15:14:00

Mud and Cushion Information

Mud Type: Gel Chem	Cushion Type:	Oil API:	deg API
Mud Weight: lb/gal	Cushion Length: ft	Water Salinity:	ppm
Viscosity: sec/qt	Cushion Volume: bbl		
Water Loss: in ³	Gas Cushion Type:		
Resistivity: ohm.m	Gas Cushion Pressure: psia		
Salinity: ppm			
Filter Cake: inches			

Recovery Information

Recovery Table

Length ft	Description	Volume bbl
3.00	mud	0.042

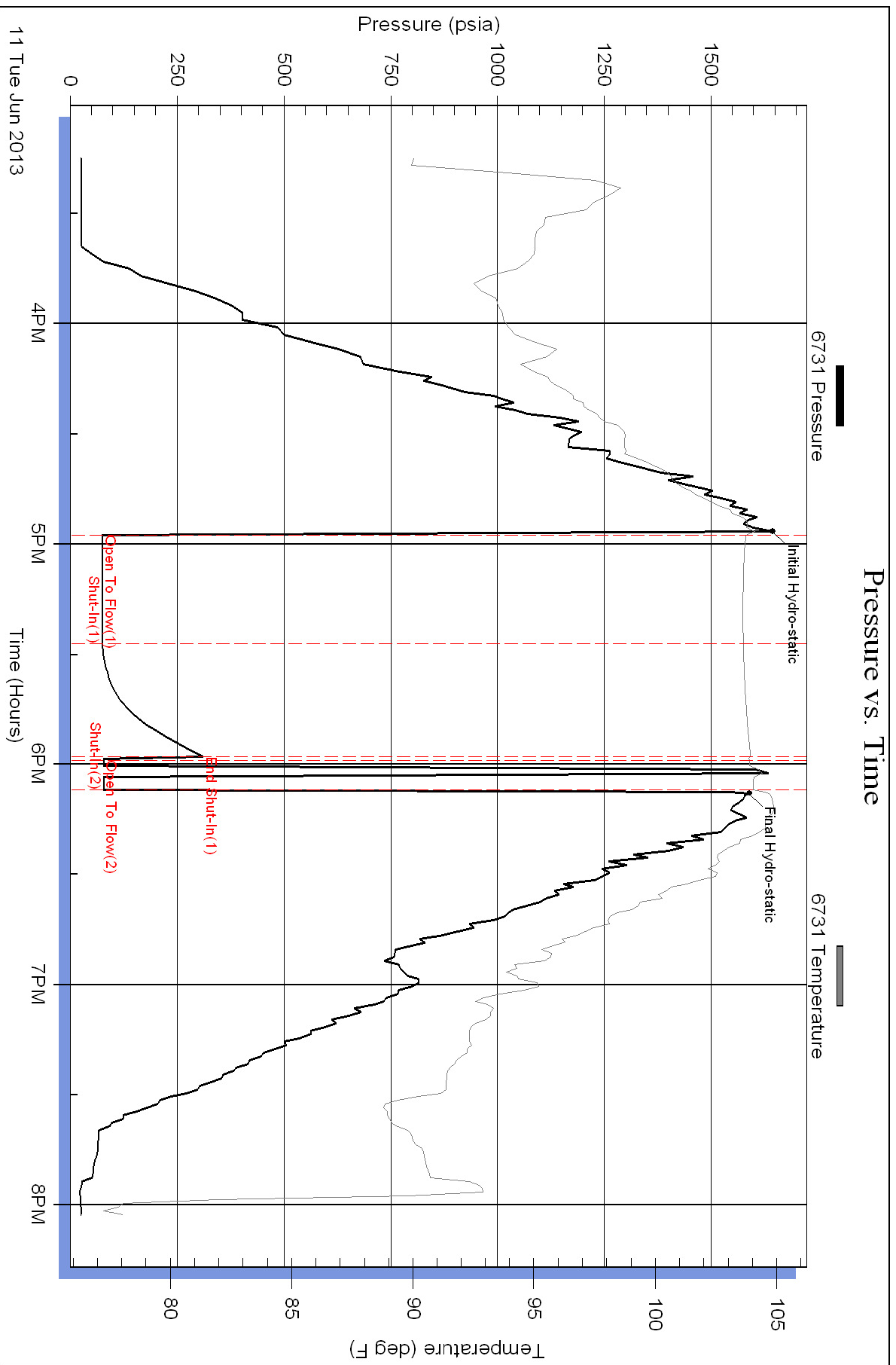
Total Length: 3.00 ft Total Volume: 0.042 bbl

Num Fluid Samples: 0 Num Gas Bombs: 0 Serial #:

Laboratory Name: Laboratory Location:

Recovery Comments: flushed tool 2nd open

Pressure vs. Time



Pressure vs. Time

