



## DRILL STEM TEST REPORT

Prepared For: **Stelbar Oil Corp**

1625 N. Waterfront PKWY  
Wichita, KS 67206

ATTN: Dave Goldak

**Hess #1-31**

**31-17s-33w Scott,KS**

Start Date: 2013.06.09 @ 23:40:51

End Date: 2013.06.10 @ 06:53:06

Job Ticket #: 49211                      DST #: 1

Trilobite Testing, Inc  
PO Box 362 Hays, KS 67601  
ph: 785-625-4778 fax: 785-625-5620

Printed: 2013.06.13 @ 08:38:38



**TRILOBITE  
TESTING, INC.**

# DRILL STEM TEST REPORT

Stelbar Oil Corp  
1625 N. Waterfront PKWY  
Wichita, KS 67206  
ATTN: Dave Goldak

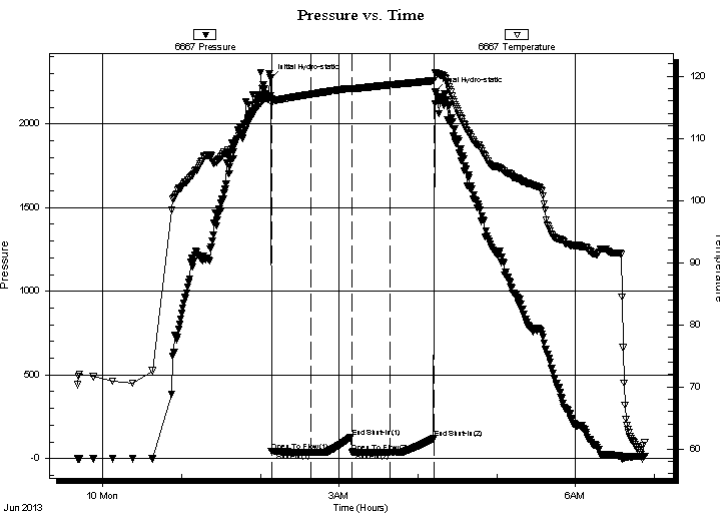
**31-17s-33w Scott, KS**  
**Hess #1-31**  
Job Ticket: 49211      **DST#: 1**  
Test Start: 2013.06.09 @ 23:40:51

## GENERAL INFORMATION:

Formation: **Marmaton - Pawnee**  
Deviated: No Whipstock: ft (KB)  
Time Tool Opened: 02:08:36  
Time Test Ended: 06:53:06  
Interval: **4460.00 ft (KB) To 4626.00 ft (KB) (TVD)**  
Total Depth: 4626.00 ft (KB) (TVD)  
Hole Diameter: 7.88 inches Hole Condition: Fair  
Test Type: Conventional Bottom Hole (Initial)  
Tester: Shane McBride  
Unit No: 55  
Reference Elevations: 3088.00 ft (KB)  
3080.00 ft (CF)  
KB to GR/CF: 8.00 ft

**Serial #: 6667      Inside**  
Press @ Run Depth: 36.39 psig @ 4461.00 ft (KB)      Capacity: 8000.00 psig  
Start Date: 2013.06.09      End Date: 2013.06.10      Last Calib.: 2013.06.10  
Start Time: 23:40:51      End Time: 06:53:06      Time On Btm: 2013.06.10 @ 02:07:51  
Time Off Btm: 2013.06.10 @ 04:13:21

TEST COMMENT: 1/2" blow died in 22 min.  
No return  
No blow  
No return



## PRESSURE SUMMARY

Time (Min.)	Pressure (psig)	Temp (deg F)	Annotation
0	2269.37	116.81	Initial Hydro-static
1	40.21	116.30	Open To Flow (1)
31	36.75	117.08	Shut-In(1)
62	128.81	118.06	End Shut-In(1)
62	38.77	118.00	Open To Flow (2)
91	36.39	118.57	Shut-In(2)
124	120.99	119.27	End Shut-In(2)
126	2193.66	120.49	Final Hydro-static

## Recovery

Length (ft)	Description	Volume (bbl)
5.00	mud 100% m	0.07

## Gas Rates

Choke (inches)	Pressure (psig)	Gas Rate (Mcf/d)





**TRILOBITE  
TESTING, INC.**

# DRILL STEM TEST REPORT

**TOOL DIAGRAM**

Stelbar Oil Corp

**31-17s-33w Scott, KS**

1625 N. Waterfront PKWY  
Wichita, KS 67206

**Hess #1-31**

Job Ticket: 49211

**DST#: 1**

ATTN: Dave Goldak

Test Start: 2013.06.09 @ 23:40:51

## Tool Information

Drill Pipe:	Length: 4434.00 ft	Diameter: 3.80 inches	Volume: 62.20 bbl	Tool Weight: 2000.00 lb
Heavy Wt. Pipe:	Length: 0.00 ft	Diameter: 0.00 inches	Volume: 0.00 bbl	Weight set on Packer: 25000.00 lb
Drill Collar:	Length: 0.00 ft	Diameter: 0.00 inches	Volume: 0.00 bbl	Weight to Pull Loose: 85000.00 lb
			<u>Total Volume: 62.20 bbl</u>	Tool Chased 0.00 ft
Drill Pipe Above KB:	5.00 ft			String Weight: Initial 63000.00 lb
Depth to Top Packer:	4460.00 ft			Final 63000.00 lb
Depth to Bottom Packer:	ft			
Interval between Packers:	166.00 ft			
Tool Length:	197.00 ft			
Number of Packers:	2	Diameter: 6.75 inches		

Tool Comments:

## Tool Description

Tool Description	Length (ft)	Serial No.	Position	Depth (ft)	Accum. Lengths
Change Over Sub	1.00			4430.00	
Shut In Tool	5.00			4435.00	
Sampler	3.00			4438.00	
Hydraulic tool	5.00			4443.00	
Jars	5.00			4448.00	
Safety Joint	3.00			4451.00	
Packer	5.00			4456.00	31.00 Bottom Of Top Packer
Packer	4.00			4460.00	
Stubb	1.00			4461.00	
Recorder	0.00	6667	Inside	4461.00	
Recorder	0.00	8368	Outside	4461.00	
Perforations	33.00			4494.00	
Change Over Sub	1.00			4495.00	
Drill Pipe	125.00			4620.00	
Change Over Sub	1.00			4621.00	
Bullnose	5.00			4626.00	166.00 Bottom Packers & Anchor
<b>Total Tool Length:</b>	<b>197.00</b>				



**TRILOBITE  
TESTING, INC.**

# DRILL STEM TEST REPORT

**FLUID SUMMARY**

Stelbar Oil Corp

**31-17s-33w Scott, KS**

1625 N. Waterfront PKWY  
Wichita, KS 67206

**Hess #1-31**

Job Ticket: 49211

**DST#: 1**

ATTN: Dave Goldak

Test Start: 2013.06.09 @ 23:40:51

## Mud and Cushion Information

Mud Type: Gel Chem

Cushion Type:

Oil API:

0 deg API

Mud Weight: 9.00 lb/gal

Cushion Length:

ft

Water Salinity:

0 ppm

Viscosity: 56.00 sec/qt

Cushion Volume:

bbbl

Water Loss: 8.75 in<sup>3</sup>

Gas Cushion Type:

Resistivity: 0.00 ohm.m

Gas Cushion Pressure:

psig

Salinity: 4300.00 ppm

Filter Cake: 1.00 inches

## Recovery Information

Recovery Table

Length ft	Description	Volume bbl
5.00	mud 100% m	0.070

Total Length: 5.00 ft      Total Volume: 0.070 bbl

Num Fluid Samples: 0

Num Gas Bombs: 0

Serial #:

Laboratory Name:

Laboratory Location:

Recovery Comments: sampler 20 psi 2000ml mud

Serial #: 6667

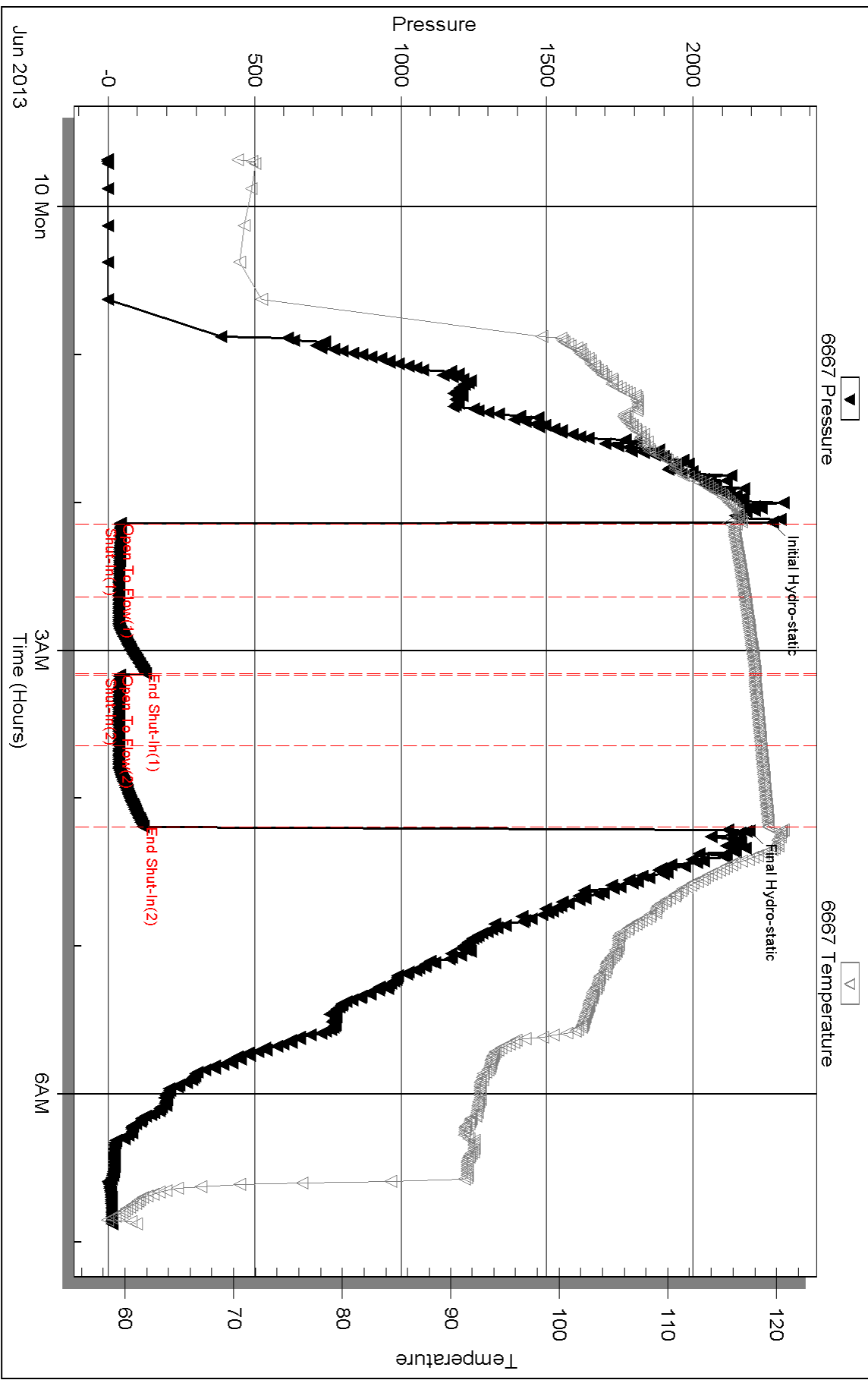
Inside

Stebar Oil Corp

Hess #1-31

DST Test Number: 1

# Pressure vs. Time



Triobite Testing, Inc

Ref. No: 49211

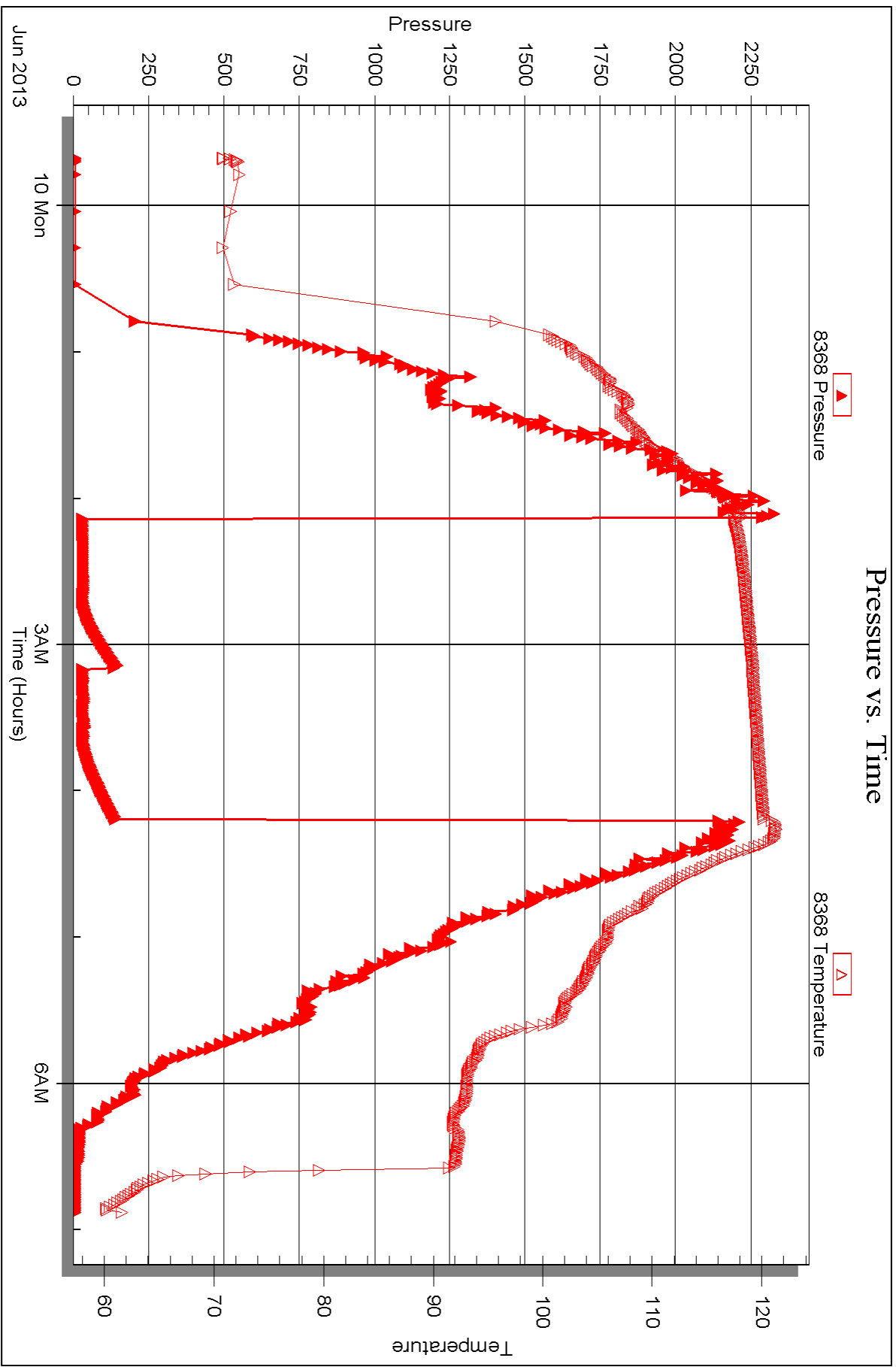
Printed: 2013.06.13 @ 08:38:41

Serial #: 8368

Outside Stebar Oil Corp

Hess #1-31

DST Test Number: 1





## DRILL STEM TEST REPORT

Prepared For: **Stelbar Oil Corp**

1625 N. Waterfront PKWY  
Wichita, KS 67206

ATTN: Dave Goldak

**Hess #1-31**

**31-17s-33w Scott,KS**

Start Date: 2013.06.11 @ 23:28:44

End Date: 2013.06.12 @ 06:44:08

Job Ticket #: 49212                      DST #: 2

Trilobite Testing, Inc  
PO Box 362 Hays, KS 67601  
ph: 785-625-4778 fax: 785-625-5620

Printed: 2013.06.13 @ 08:37:56

Stelbar Oil Corp  
31-17s-33w Scott,KS  
Hess #1-31  
DST # 2  
Johnson  
2013.06.11





**TRILOBITE  
TESTING, INC.**

# DRILL STEM TEST REPORT

Stelbar Oil Corp  
1625 N. Waterfront PKWY  
Wichita, KS 67206  
ATTN: Dave Goldak

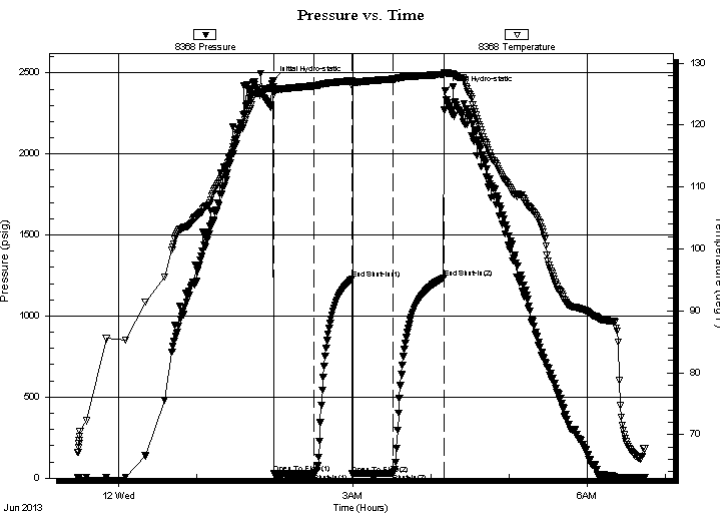
**31-17s-33w Scott,KS**  
**Hess #1-31**  
Job Ticket: 49212      **DST#: 2**  
Test Start: 2013.06.11 @ 23:28:44

## GENERAL INFORMATION:

Formation: **Johnson**  
Deviated: No Whipstock:                      ft (KB)      Test Type: Conventional Straddle (Reset)  
Time Tool Opened: 01:59:09      Tester: Shane McBride  
Time Test Ended: 06:44:08      Unit No: 55  
**Interval: 4744.00 ft (KB) To 4766.00 ft (KB) (TVD)**      Reference Elevations: 3088.00 ft (KB)  
Total Depth: 4930.00 ft (KB) (TVD)      3080.00 ft (CF)  
Hole Diameter: 7.88 inches Hole Condition: Fair      KB to GR/CF: 8.00 ft

**Serial #: 8368      Outside**  
Press @ Run Depth: 28.06 psig @ 4745.00 ft (KB)      Capacity: 8000.00 psig  
Start Date: 2013.06.11      End Date: 2013.06.12      Last Calib.: 2013.06.12  
Start Time: 23:28:44      End Time: 06:44:08      Time On Btm: 2013.06.12 @ 01:58:54  
Time Off Btm: 2013.06.12 @ 04:11:09

**TEST COMMENT:** 1/4" blow died in 16 min.  
No return  
No blow  
No return



## PRESSURE SUMMARY

Time (Min.)	Pressure (psig)	Temp (deg F)	Annotation
0	2454.33	126.13	Initial Hydro-static
1	27.44	125.01	Open To Flow (1)
31	27.08	126.32	Shut-In(1)
61	1228.33	127.15	End Shut-In(1)
61	26.21	126.32	Open To Flow (2)
92	28.06	127.41	Shut-In(2)
131	1234.14	128.17	End Shut-In(2)
133	2392.20	128.51	Final Hydro-static

## Recovery

Length (ft)	Description	Volume (bbl)
3.00	mud 100% m	0.04

\* Recovery from multiple tests

## Gas Rates

Choke (inches)	Pressure (psig)	Gas Rate (Mcf/d)







**TRILOBITE  
TESTING, INC.**

# DRILL STEM TEST REPORT

**TOOL DIAGRAM**

Stelbar Oil Corp

**31-17s-33w Scott, KS**

1625 N. Waterfront PKWY  
Wichita, KS 67206

**Hess #1-31**

Job Ticket: 49212

**DST#: 2**

ATTN: Dave Goldak

Test Start: 2013.06.11 @ 23:28:44

## Tool Information

Drill Pipe:	Length: 4746.00 ft	Diameter: 3.80 inches	Volume: 66.57 bbl	Tool Weight: 2000.00 lb
Heavy Wt. Pipe:	Length: 0.00 ft	Diameter: 0.00 inches	Volume: 0.00 bbl	Weight set on Packer: 30000.00 lb
Drill Collar:	Length: 0.00 ft	Diameter: 0.00 inches	Volume: 0.00 bbl	Weight to Pull Loose: 90000.00 lb
			<u>Total Volume: 66.57 bbl</u>	Tool Chased 0.00 ft
Drill Pipe Above KB:	33.00 ft			String Weight: Initial 66000.00 lb
Depth to Top Packer:	4744.00 ft			Final 66000.00 lb
Depth to Bottom Packer:	4930.00 ft			
Interval between Packers:	186.00 ft			
Tool Length:	217.00 ft			
Number of Packers:	3	Diameter: 6.75 inches		

Tool Comments:

## Tool Description

**Length (ft) Serial No. Position Depth (ft) Accum. Lengths**

Change Over Sub	1.00			4714.00	
Shut In Tool	5.00			4719.00	
Sampler	3.00			4722.00	
Hydraulic tool	5.00			4727.00	
Jars	5.00			4732.00	
Safety Joint	3.00			4735.00	
Packer	5.00			4740.00	31.00 Bottom Of Top Packer
Packer	4.00			4744.00	
Stubb	1.00			4745.00	
Recorder	0.00	6667	Inside	4745.00	
Recorder	0.00	8368	Outside	4745.00	
Perforations	17.00			4762.00	
Blank Off Sub	1.00			4763.00	
top of s packer	3.00			4766.00	
Packer - Shale	0.00			4766.00	
Stubb	1.00			4767.00	
Anchor	1.00			4768.00	
Recorder	0.00	6771	Below	4768.00	
Change Over Sub	1.00			4769.00	
Drill Pipe	155.00			4924.00	
Change Over Sub	1.00			4925.00	
Bullnose	5.00			4930.00	186.00 Bottom Packers & Anchor

**Total Tool Length: 217.00**



**TRILOBITE  
TESTING, INC.**

# DRILL STEM TEST REPORT

**FLUID SUMMARY**

Stelbar Oil Corp

**31-17s-33w Scott, KS**

1625 N. Waterfront PKWY  
Wichita, KS 67206

**Hess #1-31**

Job Ticket: 49212

**DST#: 2**

ATTN: Dave Goldak

Test Start: 2013.06.11 @ 23:28:44

## Mud and Cushion Information

Mud Type: Gel Chem

Cushion Type:

Oil API:

0 deg API

Mud Weight: 9.00 lb/gal

Cushion Length:

ft

Water Salinity:

0 ppm

Viscosity: 53.00 sec/qt

Cushion Volume:

bbbl

Water Loss: 8.73 in<sup>3</sup>

Gas Cushion Type:

Resistivity: 0.00 ohm.m

Gas Cushion Pressure:

psig

Salinity: 5000.00 ppm

Filter Cake: 1.00 inches

## Recovery Information

Recovery Table

Length ft	Description	Volume bbl
3.00	mud 100% m	0.042

Total Length: 3.00 ft      Total Volume: 0.042 bbl

Num Fluid Samples: 0

Num Gas Bombs: 0

Serial #:

Laboratory Name:

Laboratory Location:

Recovery Comments: sampler 15 psi 2000 ml mud

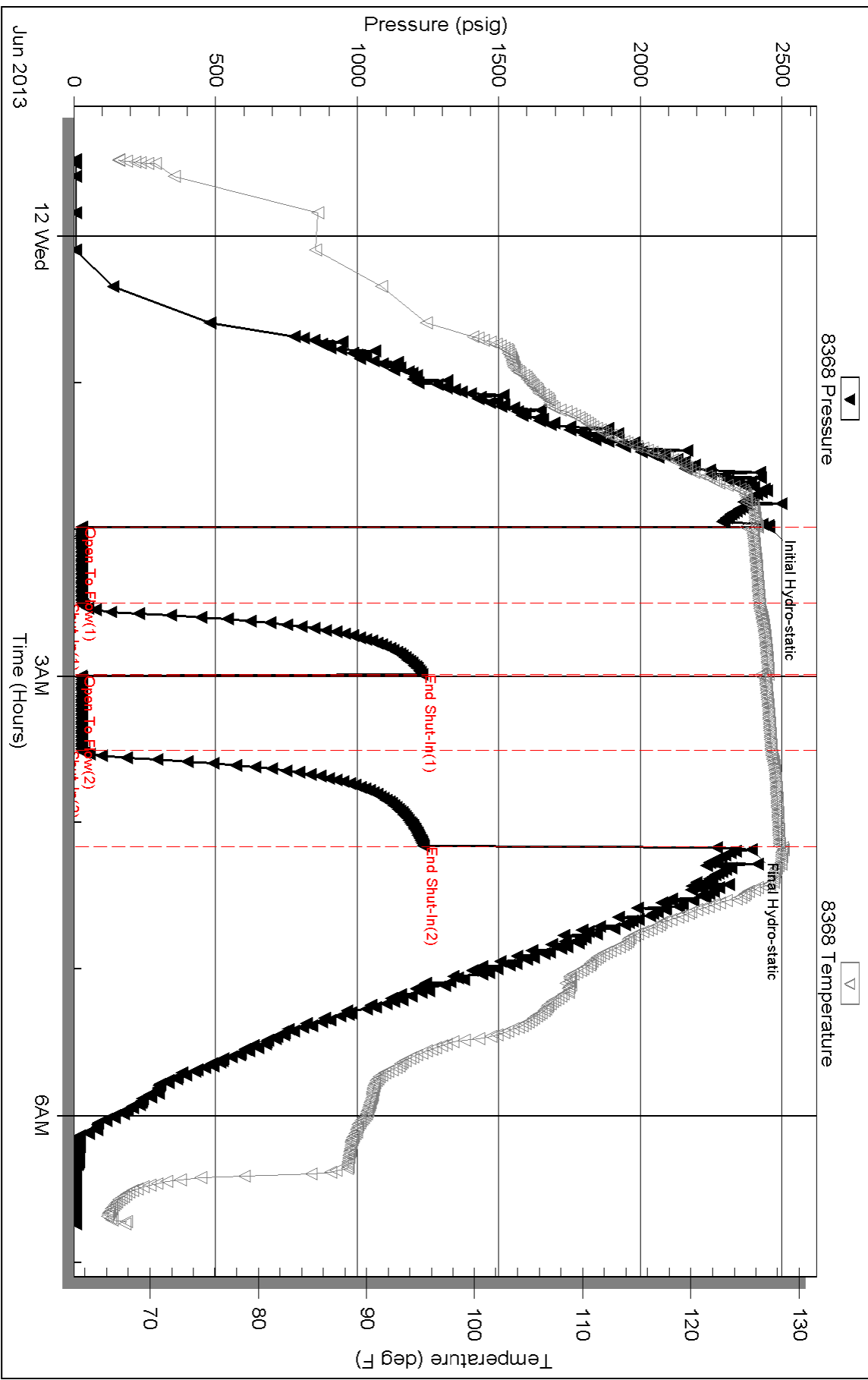
Serial #: 8368

Outside Stebar Oil Corp

Hess #1-31

DST Test Number: 2

### Pressure vs. Time

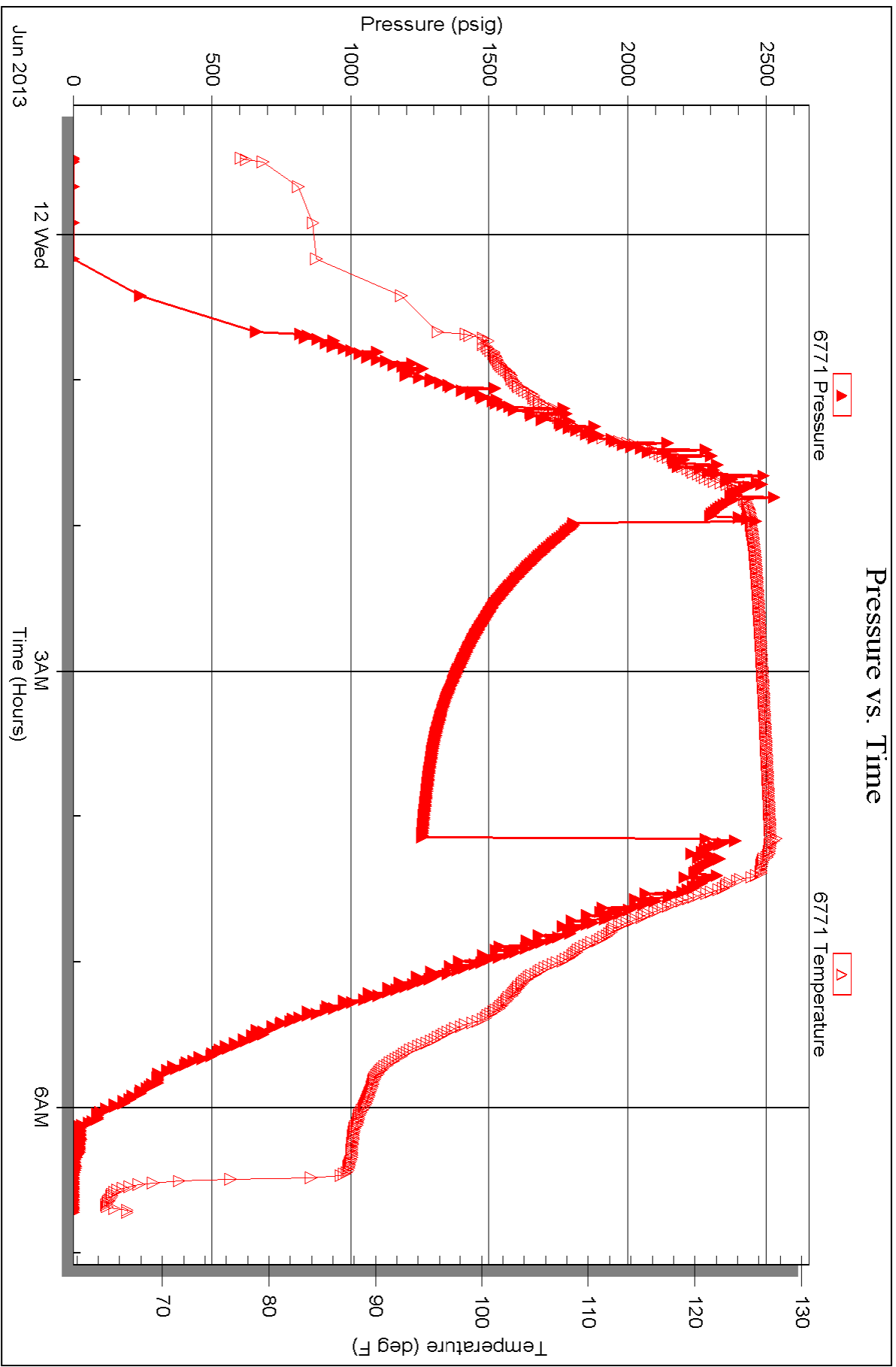


Serial #: 6771

Below (Stratfield) Oil Corp

Hess #1-31

DST Test Number: 2



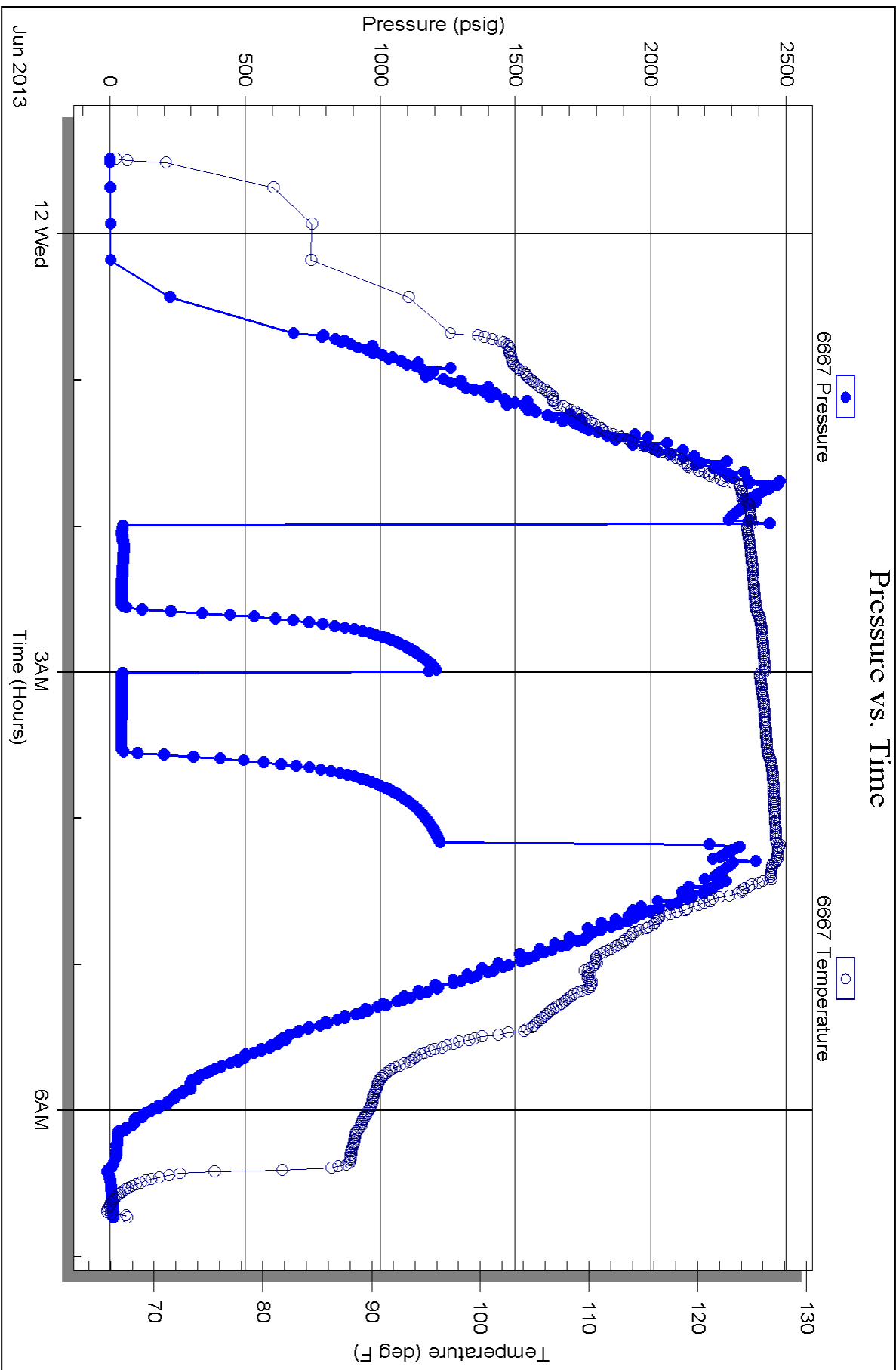
Serial #: 6667

Inside

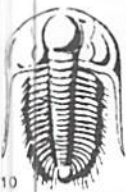
Stebar Oil Corp

Hess #1-31

DST Test Number: 2







# TRILOBITE TESTING INC.

P.O. Box 1733 • Hays, Kansas 67601

## Test Ticket

NO. 49211

Well Name & No. Hess #1-31 Test No. #1 Date 6/10/13  
 Company Stelbar O:1 Corp Elevation 3088 KB 3080 GL  
 Address 1625 N. Waterfront PKWY, Wichita, Ks 67206  
 Co. Rep / Geo. Dave Goldak Rig Picknell #10  
 Location: Sec. 31 Twp. 17s Rge. 33w Co. Scott State Ks

Interval Tested 4460 4626 Zone Tested Marmaton - Pawnee  
 Anchor Length 166 Drill Pipe Run 4434 Mud Wt. 9.2  
 Top Packer Depth 4455 Drill Collars Run — Vis 56  
 Bottom Packer Depth 4460 Wt. Pipe Run — WL 8.8  
 Total Depth 4626 Chlorides 4300 ppm System LCM #1  
 Blow Description 1/2" @ Open, died in 22 min.  
No return  
No blow  
No return

Rec	Feet of	%gas	%oil	%water	%mud
5'	Mud			100	

Rec Total 5' BHT 120° Gravity — API RW — @ — ° F Chlorides — ppm

(A) Initial Hydrostatic <u>2269</u>	<input checked="" type="checkbox"/> Test 1250	T-On Location <u>22:25</u>
(B) First Initial Flow <u>40</u>	<input checked="" type="checkbox"/> Jars 250	T-Started <u>23:40</u>
(C) First Final Flow <u>36</u>	<input checked="" type="checkbox"/> Safety Joint 75	T-Open <u>02:09</u>
(D) Initial Shut-In <u>128</u>	<input checked="" type="checkbox"/> Circ Sub <u>N/C</u>	T-Pulled <u>04:09</u>
(E) Second Initial Flow <u>38</u>	<input type="checkbox"/> Hourly Standby	T-Out <u>07:00</u>
(F) Second Final Flow <u>36</u>	<input checked="" type="checkbox"/> Mileage <u>26 RT</u> 40.30	Comments
(G) Final Shut-In <u>120</u>	<input checked="" type="checkbox"/> Sampler 250	
(H) Final Hydrostatic <u>2193</u>	<input type="checkbox"/> Straddle	<input type="checkbox"/> Ruined Shale Packer
	<input type="checkbox"/> Shale Packer	<input type="checkbox"/> Ruined Packer
	<input type="checkbox"/> Extra Packer	<input type="checkbox"/> Extra Copies
	<input type="checkbox"/> Extra Recorder	Sub Total <u>0</u>
	<input type="checkbox"/> Day Standby	Total <u>1865.30</u>
	<input type="checkbox"/> Accessibility	MP/DST Disc't
	Sub Total <u>1865.30</u>	

Initial Open 30  
 Initial Shut-In 30  
 Final Flow 30  
 Final Shut-In 30

Approved By Dave Goldak Our Representative [Signature]

TriLOBite Testing Inc. shall not be liable for damaged of any kind of the property or personnel of the one for whom a test is made, or for any loss suffered or sustained, directly or indirectly, through the use of its equipment, or its statements or opinion concerning the results of any test, tools lost or damaged in the hole shall be paid for at cost by the party for whom the test is made.



# TRILOBITE TESTING, INC.

P.O. Box 362 • Hays, Kansas 67601

## FLUID SAMPLER DATA

Ticket No. 49211 Date 6/10/13  
 Company Name Stelhar Oil Corp  
 Lease Hess #1-31 Test No. (4460-4626) #1 Wamator - Pawnee  
 County Scott, KS Sec. 31 Twp. 17S Rng. 33W

### SAMPLER RECOVERY

Gas \_\_\_\_\_ ML  
 Oil \_\_\_\_\_ ML  
 Mud 2000 ML  
 Water \_\_\_\_\_ ML  
 Other \_\_\_\_\_ ML  
 Pressure 20 PSI  
 Total 2000 ML

### PIT MUD ANALYSIS

Chlorides 4300 ppm.  
 Resistivity 1.499 ohms @ 65° F  
 Viscosity 54  
 Mud Weight 9.2  
 Filtrate 8.8  
 Other LCM #1

### SAMPLER ANALYSIS

Resistivity 1.388 ohms @ 62° F  
 Chlorides 4900 ppm.  
 Gravity \_\_\_\_\_ corrected @ 60F

### PIPE RECOVERY

TOP  
 Resistivity 1.388 ohms @ 62° F  
 Chlorides 4900 ppm.  
 MIDDLE  
 Resistivity 1.388 ohms @ 62° F  
 Chlorides 4900 ppm.  
 BOTTOM  
 Resistivity 1.388 ohms @ 62° F  
 Chlorides 4900 ppm.



# TRILOBITE TESTING INC.

P.O. Box 1733 • Hays, Kansas 67601

## Test Ticket

NO. 49212

Well Name & No. Hess # 1-31 Test No. #2 Date 6/12/13  
 Company Stelbar Oil Corp Elevation 3088 KB 3088 GL  
 Address 1625 N. Waterfront PKWY, Wichita, KS 67206  
 Co. Rep / Geo. Dave Goldak Rig Picknell  
 Location: Sec. 31 Twp. 17S Rge. 33W Co. Scott State Ks

Interval Tested 4744 4766 Zone Tested Johnson  
 Anchor Length 22 Drill Pipe Run 4746 Mud Wt. 9.2  
 Top Packer Depth 4239 - 4744 Drill Collars Run — Vis 53  
 Bottom Packer Depth 4766 Wt. Pipe Run — WL 8.8  
 Total Depth 4930 Chlorides 5000 ppm System LCM #2

Blow Description 1/4" in blow died in 11 min.  
No return  
No blow  
No return

Rec	Feet of	%gas	%oil	%water	%mud
<u>3'</u>	<u>Mud</u>			<u>100</u>	
Rec	Feet of	%gas	%oil	%water	%mud
Rec	Feet of	%gas	%oil	%water	%mud
Rec	Feet of	%gas	%oil	%water	%mud
Rec	Feet of	%gas	%oil	%water	%mud

Rec Total 3' BHT 128° Gravity — API RW — @ — °F Chlorides — ppm

(A) Initial Hydrostatic <u>2454</u>	<input checked="" type="checkbox"/> Test <u>1250</u>	T-On Location <u>23:00</u>
(B) First Initial Flow <u>27</u>	<input checked="" type="checkbox"/> Jars <u>250</u>	T-Started <u>23:28</u>
(C) First Final Flow <u>27</u>	<input checked="" type="checkbox"/> Safety Joint <u>75</u>	T-Open <u>02:00</u>
(D) Initial Shut-In <u>1228</u>	<input checked="" type="checkbox"/> Circ Sub <u>N/C</u>	T-Pulled <u>04:00</u>
(E) Second Initial Flow <u>26</u>	<input type="checkbox"/> Hourly Standby	T-Out <u>07:00</u>
(F) Second Final Flow <u>28</u>	<input checked="" type="checkbox"/> Mileage <u>24 RT</u> 40.30	Comments
(G) Final Shut-In <u>1234</u>	<input checked="" type="checkbox"/> Sampler <u>250</u>	
(H) Final Hydrostatic <u>2392</u>	<input checked="" type="checkbox"/> Straddle <u>600</u>	<input type="checkbox"/> Ruined Shale Packer
	<input checked="" type="checkbox"/> Shale Packer <u>250</u>	<input type="checkbox"/> Ruined Packer
	<input type="checkbox"/> Extra Packer	<input type="checkbox"/> Extra Copies
Initial Open <u>30</u>	<input type="checkbox"/> Extra Recorder	Sub Total <u>533.33</u>
Initial Shut-In <u>30</u>	<input type="checkbox"/> Day Standby <u>1d 16h</u>	Total <u>3248.63</u>
Final Flow <u>30</u>	<input type="checkbox"/> Accessibility	MP/DST Disc't
Final Shut-In <u>30</u>	Sub Total <u>2715.30</u>	

Approved By [Signature] Our Representative [Signature]

Trilobite Testing Inc. shall not be liable for damaged of any kind of the property or personnel of the one for whom a test is made, or for any loss suffered or sustained, directly or indirectly, through the use of its equipment, or its statements of opinion concerning the results of any test, tools lost or damaged in the hole shall be paid for at cost by the party for whom the test is made.



# TRILOBITE TESTING, INC.

P.O. Box 362 • Hays, Kansas 67601

## FLUID SAMPLER DATA

49212 \_\_\_\_\_ Date 6/12/13  
 Name Stelbar Oil Corp  
 Well # 1-31 Test No. #2 4744-4766  
cott, KS Johnson  
 Sec. 31 Twp. 17S Rng. 33W

## SAMPLER RECOVERY

## PIT MUD ANALYSIS

\_\_\_\_\_ ML Chlorides 5000 ppm.  
 \_\_\_\_\_ ML Resistivity 1.17 ohms @ 74° F  
2000 ML Viscosity 5.3  
 \_\_\_\_\_ ML Mud Weight 9.2  
 \_\_\_\_\_ ML Filtrate 8.8  
15 PSI ~~ML~~ Other LCM #2  
2000 ML ML \_\_\_\_\_

## SAMPLER ANALYSIS

## PIPE RECOVERY

1.22 ohms @ 72° F TOP Resistivity 1.22 ohms @ 72° F  
5200 ppm. Chlorides 5200 ppm.  
 \_\_\_\_\_ corrected @ 60F MIDDLE Resistivity 1.22 ohms @ 72° F  
 Chlorides 5200 ppm.  
 BOTTOM Resistivity 1.22 ohms @ 72° F  
 Chlorides 5200 ppm.