

# GEOLOGIST'S REPORT

DRILLING TIME AND SAMPLE LOG

COMPANY **BLUERIDGE PETROLEUM CORPORATION** ELEVATIONS

LEASE **#1-2 Hoss** KB **2397**

FIELD **Wildcat** DF \_\_\_\_\_

LOCATION **937' FNL & 1345' FEL** GL **2392**

SEC **2** TWP **20s** RGE **25w** Measurements Are All From **2397 KB**

COUNTY **Ness** STATE **Kansas**

CONTRACTOR **L. D. DRILLING, INC.**

SPUD **3-16-03** COMP **3-26-03** SURFACE CASING **8 5/8" @ 211'**

RTD **4594** LTD **4596** PRODUCTION **5 1/2" @**

MUD UP **3574** TYPE MUD **CHEMICAL** ELECTRICAL SURVEYS  
Dura Tool, Deis-N. Micro sonic

SAMPLES SAVED FROM **3600 TO 4594**

DRILLING TIME KEPT FROM \_\_\_\_\_ TO **4594**

SAMPLES EXAMINED FROM \_\_\_\_\_ TO **4594**

GEOLOGICAL SUPERVISION FROM \_\_\_\_\_ TO **4594**

GEOLOGIST ON WELL **Kim B. SROEMAKER**

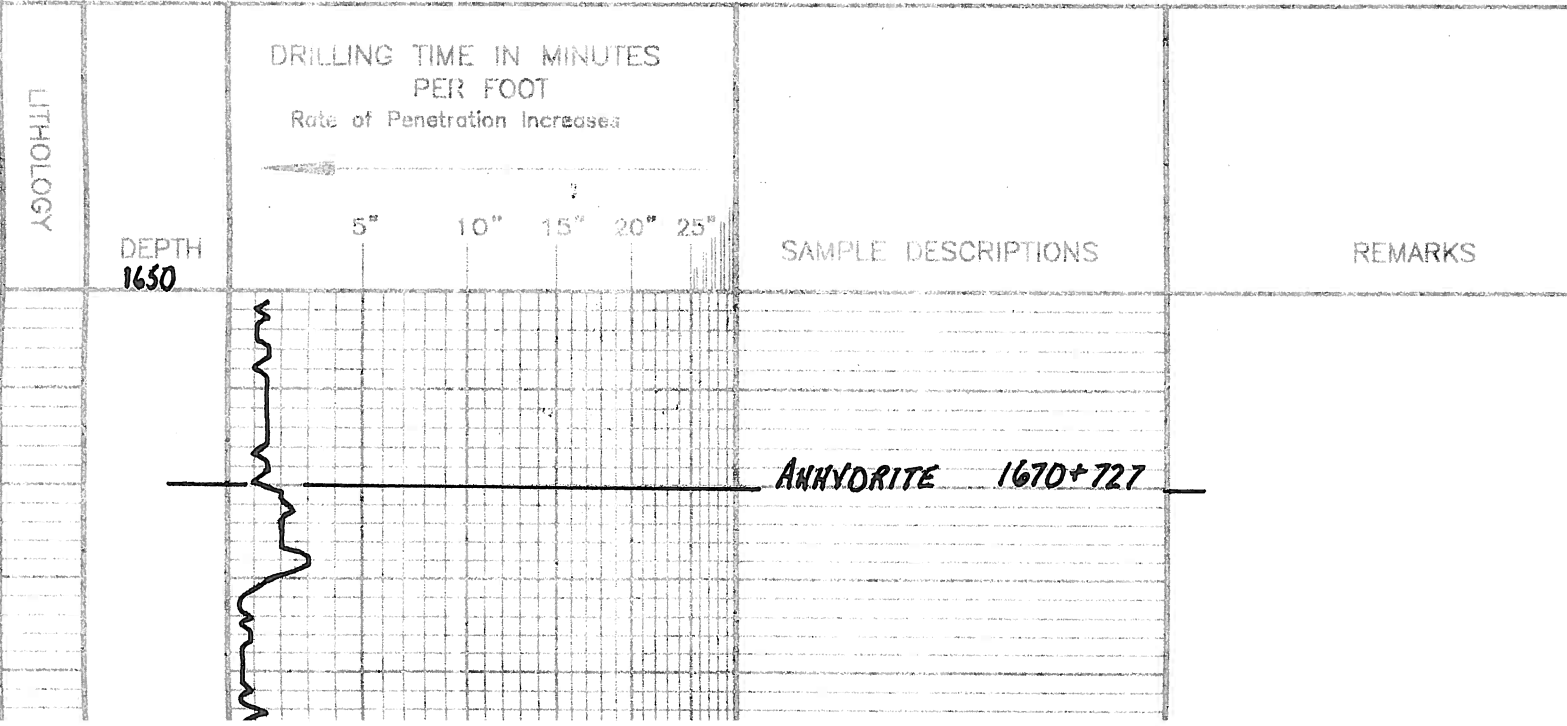
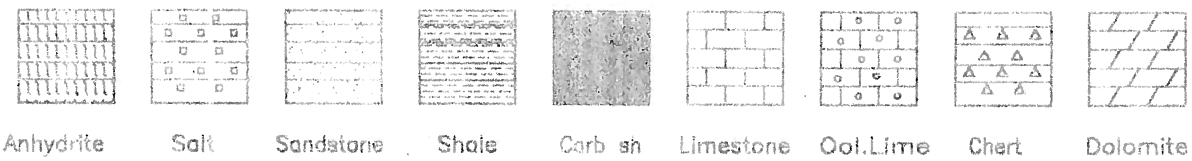
FORMATION TOPS	LOG	SAMPLES	
ANHYDRITE	1666 + 731	1670 + 727	
B/ANH.	1706 + 691	1712 + 685	
HEBNER	3790 - 1393	3788 - 1391	
LANSING	3832 - 1435	3830 - 1433	
B/KC	4160 - 1763	4168 - 1771	
FORT SCOTT	4346 - 1949	4344 - 1947	2
CHEROKEE	4372 - 1975	4372 - 1975	
MISSISSIPPI "U"	4442 - 2045	4449 - 2052	
MISS. DOLOMITE	4457 - 2060	4457 - 2060	*

REMARKS

3-16-03 SPUD  
 3-17 @ 211'  
 3-18 @ 1645'  
 3-19 @ 2480'  
 3-20 @ 3055'  
 3-21 @ 3531'  
 3-22 @ 4037'  
 3-23 @ 4260'  
 3-24 @ 4345'  
 3-25 @ 4468'  
 3-26 @ 4594'

API: 15-135-25549

LEGEND



SH0E01-06

DEPTH  
1650

5" 10" 15" 20" 25"

SAMPLE DESCRIPTIONS

REMARKS

ANHYDRITE 1670+727

1700

B/ANH. 1712+685

1750

3600

SAMPLES ARE LAGGED

LS. Ta Si Foss w/ DK Gy Foss.

VIS: 46  
WT: 8.6  
WL: 7.0  
CAL: 2200

LS. Ta wt. Si Foss. Si Chlky.

LS. Ta Gry. Foss - Calcitic.

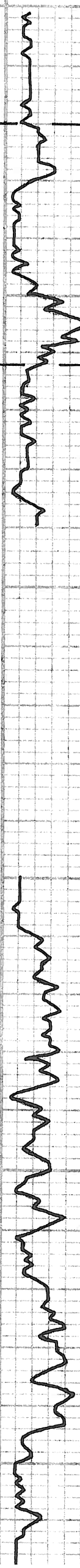
LS. wt. V Chlky.

LS. wt. ool. Foss. Chlky.

Sh. Gry. DK Gry.

3700

LS. Ta wt. Foss. ool.



WL: 7.0  
CAL: 2200

LS. Ta wt. Si. Foss. Si. Chlky.

LS. Ta Gry. Foss - Calcitic.

LS. wt. V Chlky.

LS. wt. ool. Foss. chlky.

Sh. Gry. DK Gry.

LS. Ta wt. Foss. ool.

LS. Ta Gy. V Si. Foss.

LS. Ta wt. ooc. - Si. ool. ooc.

$\Delta$  Gry. ( $\Delta$  = Chert)

LS. Ta Gy. ooc. Si. ooc.

LS. wt. Chlky

**HEEBNER 3788-1391**

Sh. Blk Carb.

LS. Ta Br V Si. Foss.

Sh. Gry. - Gr.

LS. wt. V Si. Foss. Si.  $\Delta$

Sh. Lt Gry. - Gr.

**LANSING 3830-1433**

LS. Ta wt. Si. Foss. ool.

$\Delta$  wt. Lt Gry.

LS. Ta wt. Dns. V Si. Chlky.

Sh. Lt Gr. Gy.

LS. Ta wt. Si. Foss. - Si. Chlky.

$\Delta$  Gry

LS. Br V Si. Foss. - Si.  $\Delta$

Sh. Lt Gr.

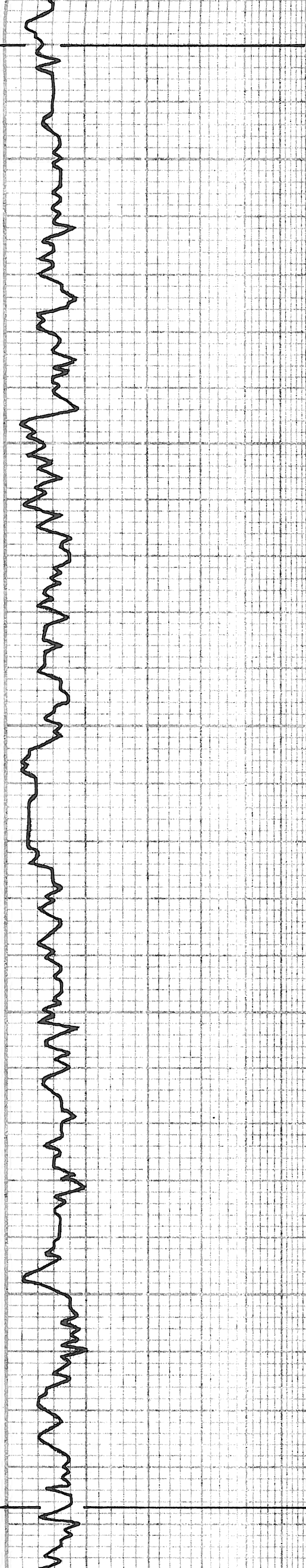
3700

3800



3900

4000



Sh. Lt. Gy. - Gr.

**LANSING 3830-1933**

Ls. Tr wt. Sh Foss. ool.

Δ wt. Lt Gy.

Ls. Tr wt. Dns. VSI. Chlky.

Sh. Lt. Gr. Gy.

Ls. Tr wt. Sl. Foss. - Sl. Chlky.

Δ Gy

Ls. Br. VSI. Foss. - Sl. Δ

Sh. Lt. Gr.

Ls. Tr wt. ool. Sl. Chlky.

Ls. Tr. Gy. Dns.

Ls. wt. Sl. Chlky.

Sh. Gy.

Ls. Tr. Lt. Br. V. Fr. Xh. Sl. ool.

Sh. Gr. Gy.

Sh. DK Gy

Ls. Lt. Br. VSI. Foss.

Δ Br

Sh. Gy.

Ls. Tr. Lt. Gy. Sl. Foss. Sl. Δ

Sh. DK Gy Ls. Br. VSI. Foss. Calcitic.

Sh. Lt. Gy.

Ls. Tr. wt. VSI. Δ Dns.

Ls. wt. ool. Sl. ool.

Ls. wt. Chlky.

Sh. Lt. Gy.

Ls. wt. Sl. Foss. - Sl. Chlky.

Ls. Tr. Gy. - Dns.

**STARK 4087-1690**  
Sh. DK Gy. Bk





Sh. Ltg.

Ls. Ta wt. VSI: A Dns.

Ls. wt. ool. Sli ool.

Ls. wt Chly.

Sh. Ltg.

Ls. wt. Sli Foss. Sli Chly.

Ls. Ta Gy. Dns.

**STARK 4087-1690**  
Sh. Dk. G. Bk

Ls. wt Ltg. Sli. ool. Foss. Sli. Chly.

NIS: 42 WL: 6.9  
WT: 91 CHL: 3000

Ls. Br. Dns.

Ls. wt. Sli ool. Foss. Sli. Chly.

**HUSHPUCKNEY 4124-1727**  
Sh. Bk Carb.

Ls. wt. Ltg. VSI: Foss. Sli A

Ls. wt Chly. Ls. Ta wt. Dns.

Ls. Ta Gy. Dns. VSI: Calcitic.

✓ B/KC LOG

**B/KC 4168-1771**  
Ls. wt. VSI: Foss. VSI: Chly.

Sh. Ltg. Silty.

✓ MARM LOG

**MARMATON 4184-1787**  
Ls. Ta VSI: A

Sh. Ltg.

Ls. Gy. Dns.

Sh. Rd. Ltg. G. Silty-Sdy.

Ls. Ta wt. Sli Foss VSI: Chly. P. Vug b  
Br Spd STN. FSPD, VSSG Dull Floors No odor (A230)

Sh. Lt. Blue

Ls. Ta wt. Sli Foss. Calcitic To Colonial Coral

Ls. Br Gy. Dns. VSI: A

Sh. Ltg.

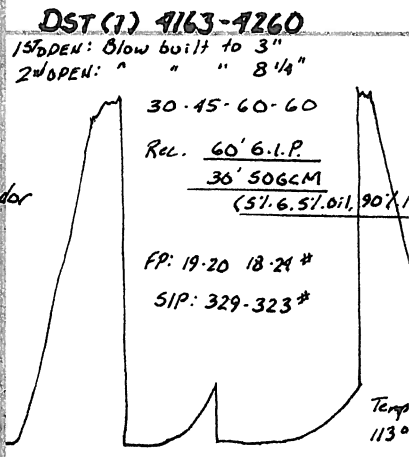
Ls. Ta Ltg. Sli. d w/ Calcite Strks.

NIS: 52  
WT: 9.2  
WL: 5.6  
CHL: 3400

✓ PAW 696

**PAWNEE 4274-1877**  
Ls. Ta VSI: Foss. Sli: A

Ls. Ltg. VSI: Foss. Sli: A



4100

4200

4300

Temp 113°

LS. Brkly. Dns. VSI: A

Sh. L.G.

LS. Tr. L.G. Slid w/ Calcite Strks.

VIS: 52  
WT: 9.2  
WL: 5.6  
CML: 3400

✓ PAW 496

**PAWNEE 4274-1877**

LS. Tr. VSI: Foss. Sl: A

LS. L.G. VSI: Foss. Sl: A

4300

LS. Gy. DE G. Silty Dns.

LS. DK G. Silty

Sh. DE G. Silty

Sh. BLK Carb.

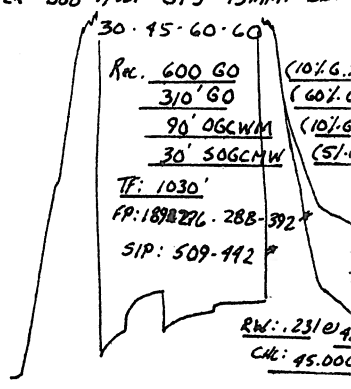
**FORT SCOT 4344-1947**

LS. Brkly. ool. Dns. P. VSI. Sp. Lt. Br. Spid Str. VSSFO. Tr. Gas. Dull Spid. Flow. VFI Odor (4360)

LS. Tr. L.G. VSI: Foss. Sl: A Dns.

**DST (2) 4330-4390**

1<sup>st</sup> OPEN: Bottom bucket 30 sec. BB: 1  
2<sup>nd</sup> OPEN: BOB T/Out GTS 15 min. BB: 1



LS. L.G. Tr. Sl: Foss. Sl: A Fr. P. VSI Spid Str. VSSFO. VSSG Dull Flow. Fr. Odor (4370-80)

**CHEROKEE 4372-1975**

Sh. BLK Carb.

LS. Brkly. VSI: Foss. Sl: A

LS. Gy. Dns. Sl: A

Sh. DE G.

LS. Brk. Dns.

Sh. L.G.

LS. Tr. G. Sl: Foss. Dns.

LS. Tr. Br. Sl: Foss. Sl: A

LS. Tan. VSI: Foss. P. VSI Spid DE Br Str. VSSFO. Dull Flow. Fr. Odor (4430)

Sh. Lt. Blue-Gl Silty

Δ Yellow-Orange silty LS w/ w/ DE d Str.

Δ (Chert.) BLK Sl: Foss. Xln. Fr. Gd. VSI Spid. BLK Sat. Charcoal Str. FSG V-Gd SFO No Flour Fr Odor (4440)

Δ Yellow, Orange, Δ w/ L.G. w/ BLK Str.

Δ w/ L.G. Sl: Foss

**MISSISSIPPI 4449 - 2052**

MISS. DOLOMITE 4457-2060  
Dol. Lt. G. V. Fr. Xln. Suc. VSI: Foss. P. VSI Spid. DK Br. Strat. Str. SSSFO. Dull Flow. Fr Odor

Dol. Tr. Lt. Br. V. Fr. Xln. Suc. Foss. "Vuggy" Fr. Gd. VSI Spid. Lt. Br. Sat. Str. SSSFO. Dull Flow. Gd Odor

Dol. Tr. V. Fr. Xln. Suc. Foss. Sl: Foss. "Vuggy" Fr. Gd. VSI Spid. Lt. Br. Sat. Str. SSSFO. Dull Flow. Gd Odor

Dol. Tr. w/ V. Fr. Xln. Suc. Sl: Foss. Sl: "Vuggy" Fr. VSI Spid. Br. DK Br. Spid Str. SSSFO. Dull Flow. Fr Odor

Dol. w/ V. Fr. Xln. Suc. Sl: Glauconitic

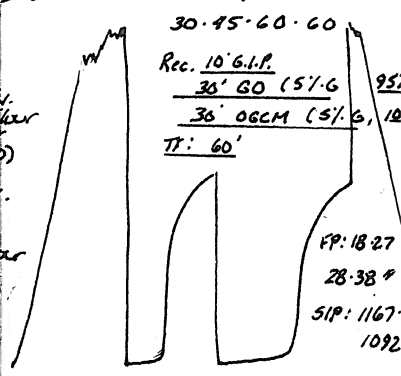
VIS: 48  
WT: 9.2  
WL: 6.4  
CML: 3800

DST (3)

✓ MISS'U' LOG

**DST (3) 4414-4468**

1<sup>st</sup> OPEN: Blow built to 3 3/4"  
2<sup>nd</sup> OPEN: " " " 7"



4400

4500

MISS'U' LOG

F.odor (440)  
Δ Yellow, Orange, Δ wt Lt Gy. w/ Blk Str.

Δ wt. Lt Gy. Sl. Foss.  
Sh. Lt. Blue. MISSISSIPPI 4499  
- 2052

MISS. DOLOMITE 4457-2060  
Dol. Lt. G. V. Fr. xh. Suc. V. Sl. Foss. Pi. V. U. P.  
Dk. Bl. Strat. Str. SSED. Dull Flour. Fr. odor

VIS: 48  
WT: 9.2  
VCL: 6.4  
CAL: 4700

Dol. Th. Lt. Bl. V. Fr. xh. Suc. Foss. "Vuggy"  
Fr. Gd. Vug. p. Lt. Bl. Sat. Str. SSED. FSG  
Dull Flour. Gd odor.

Dol. Th. V. Fr. xh. Suc. Foss. Sl. Foss. "Vuggy"  
Fr. Gd. Vug. p. Lt. Bl. Sat. Str. SSED.  
Dull Flour. Gd odor.

Dol. Th. wt. V. Fr. xh. Suc. Sl. Foss. Sl. "Vuggy"  
Fr. Vug. p. Bl. Dk. Bl. Spid. Str. SSED.  
Dull Flour. Fr. odor.

Dol. wt. V. Fr. xh. Suc. Sl. Glauconitic.

Dol. Lt. Gy. V. Fr. xh. Fr. xh. w/ Dk Gy. Inclusion.  
Δ (Chert) wt. Fresh Cut

Δ wt. Fresh Cut

Δ wt. Lt Gy. Sl. Foss. Foss.  
Dol. wt. Fr. xh.

Δ wt. Lt Gy. Sl. Foss.

Dol. wt. V. Fr. xh. Suc.

Δ wt. Sl. Trip.

Dol. Bl. Md. xh.

RTD 4594-2197

4500

4600

