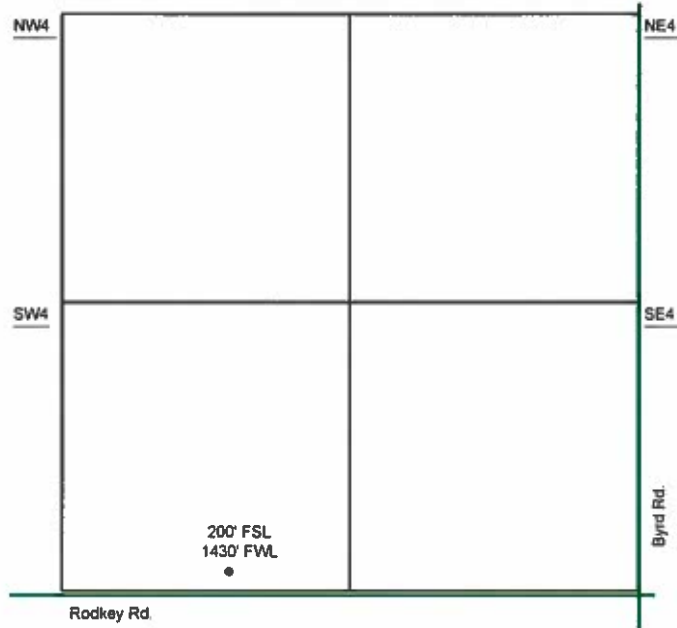
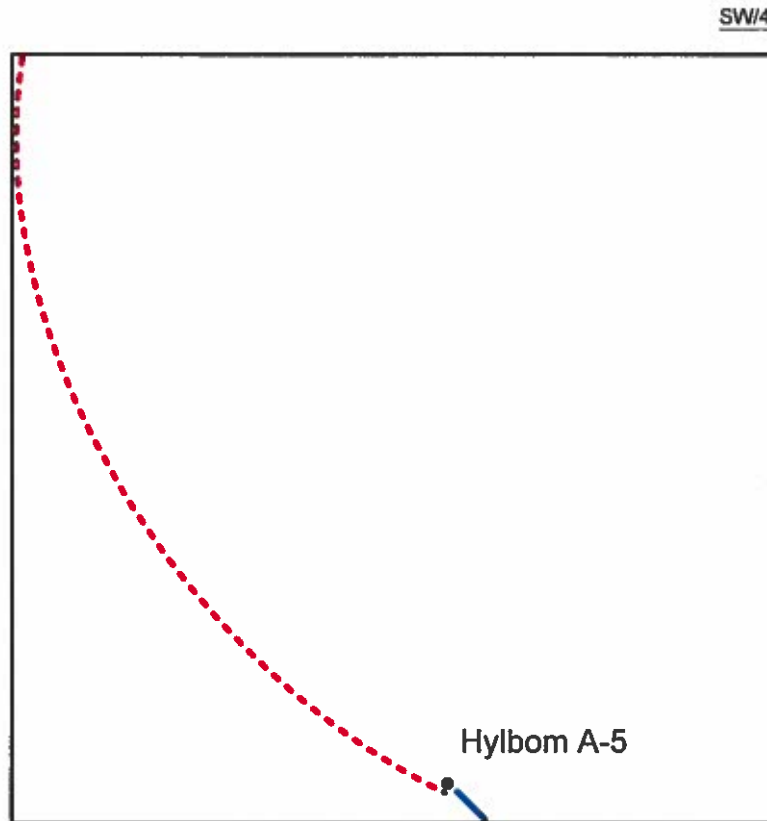


**Proposed Plan of Construction**  
**Hylbom A-5**  
**Sec 30 T23S-R34W**  
**Finney County, KS**



The Tank Battery for the Hylbom A-5 is located in the NW of NW the quarter.

Sec 30 - T23S - R34W



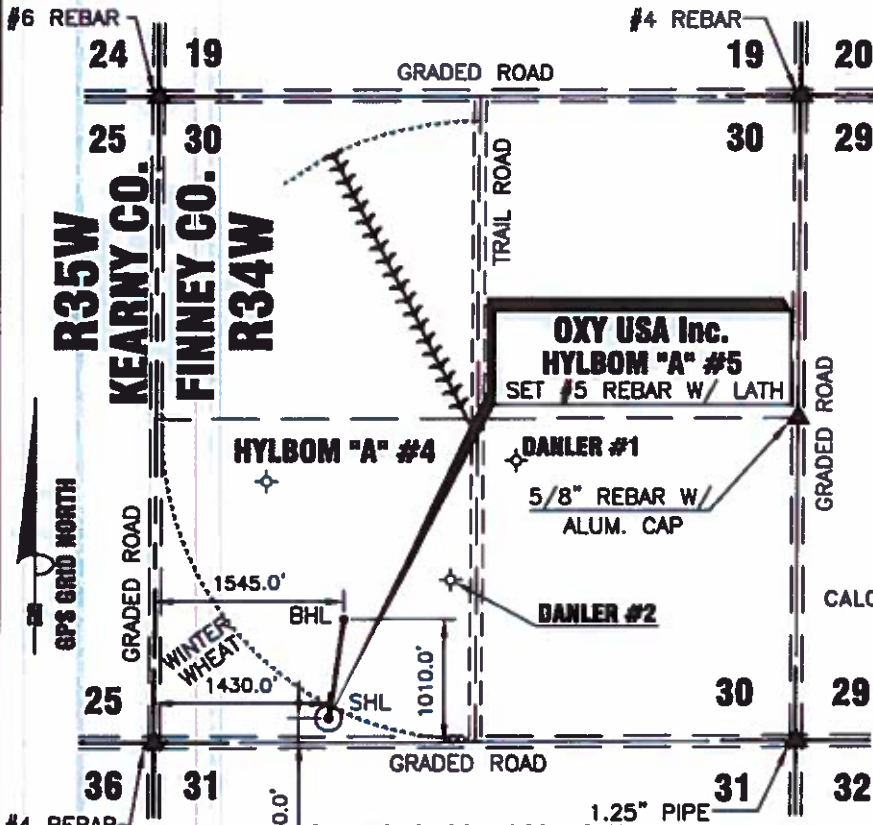
- Well Location
- Proposed Lease Roads
- - - Proposed Pipeline
- Proposed Tank Battery
- Proposed Power Lines
- Existing Pipeline

Proposed Details of  
 SW/4 Sec 30 -T23S -R34W

Note-Drawing **Not** to Scale



# T23S-R34W



DATE 5/14/2013

OPERATOR OXY U.S.A.

WELL NAME HYLBOM "A" #5

LOCATION SW/4 SEC. 30, T23S-R34W

SURFACE HOLE LOCATION

FOOTAGES & 200.0' F S L

RELATIONS 1430.0' F W L

ELEVATION 2978.69'

BOTTOM HOLE LOCATION

FOOTAGES & 1010.0' F S L

RELATIONS 1545.0' F W L

CALC. ELEVATION \_\_\_\_\_

DISTANCE TO EXISTING WELL 1502.63' DANLER #2

AUTHORIZED BY BETH HICKERT

SW/4 SEC. 30, T23S-R34W  
FINNEY COUNTY, KANSAS

CROP WINTER WHEAT

SURFACE HOLE LOCATION

LATITUDE 38°01'05.48497" N = 38.018190° N

LONGITUDE 101°05'51.21047" W = 101.097558° W

STATE PLANE COORD. X = 1251787.85

KANSAS SOUTH ZONE Y = 502533.64  
NAD 27

BOTTOM HOLE LOCATION

LATITUDE 38°01'13.49734" N = 38.020416° N

LONGITUDE 101°05'49.73261" W = 101.097148° W

STATE PLANE COORD. X = 1251928.64

KANSAS SOUTH ZONE Y = 503340.47  
NAD 27

NOTE: CONTRACTOR TO CONTACT ONE CALL ☎ 1-800-DIG SAFE PRIOR TO ANY EXCAVATION OR CONSTRUCTION.

DRIVING DIRECTIONS USED TO STAKE WELL FROM KNOWN LANDMARK OR CITY FROM:

FROM THE INTERSECTION OF FINNEY-KEARNY CO. LINE & HWY #50, 6 MILES WEST OF HOLCOMB, KS; THENCE EAST 1430 FT.; THENCE NORTH 200 FT. INTO.



**OXY USA Inc.** 1117 N. HIGHWAY 27  
P.O. DRAWER 330  
ELKHART, KANSAS 67850  
(820)897-2896

PROPOSED WELL LOCATION OF THE HYLBOM "A" #5  
LOCATED IN THE SW/4 SEC. 30, T23S - R34W  
FINNEY COUNTY, KANSAS

NO.	DATE	REVISIONS	DATE

SCALE: 1" = 1500' DATE: 5/14/2013

WORK ORDER NO.:

**HARDER**  
AND ASSOCIATES "locating our world"  
LAND SURVEYING - GPS SPECIALISTS  
P.O. BOX 818 214 MORTON  
Elkhart, Kansas 67850  
Phone: (820) 897-2896  
Fax: (820) 897-4475  
E-MAIL: theharder@earthlink.com

CO KS NM OK

DRAWN BY: DRF CHECKED BY: TVH APPROVED BY: AUTHORIZED BY: B. HICKERT

DRAWING NO. OX0513A01