

DRILL STEM TEST REPORT

Prepared For: **Hartman Oil Co**

10500 E Berkeley SQ PKWY Ste 100
Wichita KS 67206

ATTN: Kitt Noah

Wilkinson #3-22

22-17s-34w Scott KS

Start Date: 2013.05.27 @ 18:30:30

End Date: 2013.05.28 @ 01:33:15

Job Ticket #: 53236 DST #: 1

Trilobite Testing, Inc

PO Box 362 Hays, KS 67601

ph: 785-625-4778 fax: 785-625-5620

Printed: 2013.06.05 @ 09:58:35



TRILOBITE TESTING, INC.

DRILL STEM TEST REPORT

Hartman Oil Co
 10500 E Berkeley SQ PKWY Ste 100
 Wichita KS 67206
 ATTN: Kitt Noah

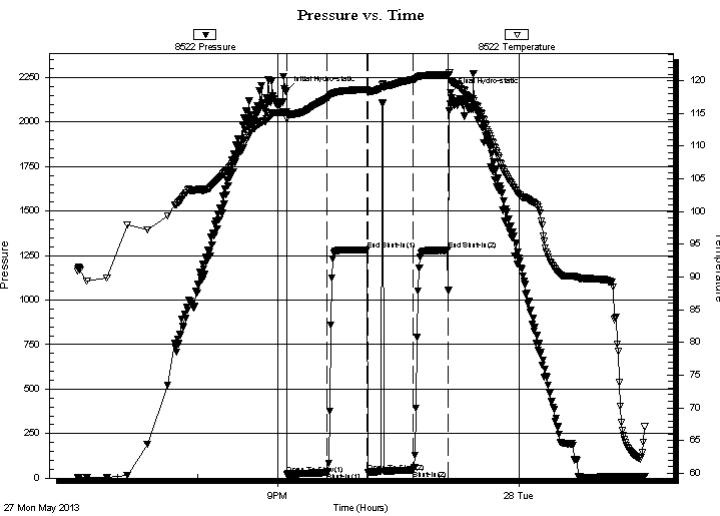
22-17s-34w Scott KS
Wilkinson #3-22
 Job Ticket: 53236 **DST#: 1**
 Test Start: 2013.05.27 @ 18:30:30

GENERAL INFORMATION:

Formation: **Pleasanton**
 Deviated: No Whipstock: ft (KB)
 Time Tool Opened: 21:06:30
 Time Test Ended: 01:33:15
 Interval: **4409.00 ft (KB) To 4432.00 ft (KB) (TVD)**
 Total Depth: 4432.00 ft (KB) (TVD)
 Hole Diameter: 7.88 inches Hole Condition: Good
 Test Type: Conventional Bottom Hole (Initial)
 Tester: Bradley Walter
 Unit No: 53
 Reference Elevations: 3097.00 ft (KB)
 3086.00 ft (CF)
 KB to GR/CF: 11.00 ft

Serial #: 8522 Outside
 Press @ Run Depth: 46.48 psig @ 4410.00 ft (KB) Capacity: 8000.00 psig
 Start Date: 2013.05.27 End Date: 2013.05.28 Last Calib.: 2013.05.28
 Start Time: 18:30:35 End Time: 01:33:14 Time On Btm: 2013.05.27 @ 21:06:15
 Time Off Btm: 2013.05.27 @ 23:08:45

TEST COMMENT: IF: Weak surface blow - died in 20 min
 IS: No return
 FF: No blow : Flushed tool
 FS: No return



PRESSURE SUMMARY

Time (Min.)	Pressure (psig)	Temp (deg F)	Annotation
0	2178.20	115.32	Initial Hydro-static
1	20.53	114.11	Open To Flow (1)
30	31.47	117.26	Shut-In(1)
61	1282.79	118.67	End Shut-In(1)
61	33.94	118.17	Open To Flow (2)
95	46.48	120.17	Shut-In(2)
121	1280.03	120.88	End Shut-In(2)
123	2163.67	119.95	Final Hydro-static

Recovery

Length (ft)	Description	Volume (bbl)
15.00	MCW 50W-50M (Oil specs)	0.07

Gas Rates

Choke (inches)	Pressure (psig)	Gas Rate (Mcf/d)



**TRILOBITE
TESTING, INC.**

DRILL STEM TEST REPORT

TOOL DIAGRAM

Hartman Oil Co
10500 E Berkeley SQ PKWY Ste 100
Wichita KS 67206
ATTN: Kitt Noah

22-17s-34w Scott KS
Wilkinson #3-22
Job Ticket: 53236 **DST#: 1**
Test Start: 2013.05.27 @ 18:30:30

Tool Information

Drill Pipe:	Length: 4026.00 ft	Diameter: 3.20 inches	Volume: 40.05 bbl	Tool Weight: 2500.00 lb
Heavy Wt. Pipe:	Length: 0.00 ft	Diameter: inches	Volume: 0.00 bbl	Weight set on Packer: 25000.00 lb
Drill Collar:	Length: 368.00 ft	Diameter: 2.25 inches	Volume: 1.81 bbl	Weight to Pull Loose: 85000.00 lb
			<u>Total Volume: 41.86 bbl</u>	Tool Chased 0.00 ft
Drill Pipe Above KB:	12.00 ft			String Weight: Initial 74000.00 lb
Depth to Top Packer:	4409.00 ft			Final 74000.00 lb
Depth to Bottom Packer:	ft			
Interval between Packers:	23.00 ft			
Tool Length:	50.00 ft			
Number of Packers:	2	Diameter: 6.75 inches		

Tool Comments:

Tool Description	Length (ft)	Serial No.	Position	Depth (ft)	Accum. Lengths
-------------------------	--------------------	-------------------	-----------------	-------------------	-----------------------

Change Over Sub	1.00			4383.00	
Shut In Tool	5.00			4388.00	
Hydraulic tool	5.00			4393.00	
Jars	5.00			4398.00	
Safety Joint	2.00			4400.00	
Packer	5.00			4405.00	27.00 Bottom Of Top Packer
Packer	4.00			4409.00	
Stubb	1.00			4410.00	
Recorder	0.00	8677	Inside	4410.00	
Recorder	0.00	8522	Outside	4410.00	
Perforations	19.00			4429.00	
Bullnose	3.00			4432.00	23.00 Bottom Packers & Anchor

Total Tool Length: 50.00



**TRILOBITE
TESTING, INC.**

DRILL STEM TEST REPORT

FLUID SUMMARY

Hartman Oil Co
10500 E Berkeley SQ PKWY Ste 100
Wichita KS 67206
ATTN: Kitt Noah

22-17s-34w Scott KS
Wilkinson #3-22
Job Ticket: 53236 **DST#: 1**
Test Start: 2013.05.27 @ 18:30:30

Mud and Cushion Information

Mud Type: Gel Chem	Cushion Type:	Oil API: 0 deg API
Mud Weight: 9.00 lb/gal	Cushion Length: ft	Water Salinity: 26000 ppm
Viscosity: 55.00 sec/qt	Cushion Volume: bbl	
Water Loss: 8.77 in ³	Gas Cushion Type:	
Resistivity: ohm.m	Gas Cushion Pressure: psig	
Salinity: 4900.00 ppm		
Filter Cake: 1.00 inches		

Recovery Information

Recovery Table

Length ft	Description	Volume bbl
15.00	MCW 50W-50M (Oil specs)	0.074

Total Length: 15.00 ft Total Volume: 0.074 bbl
 Num Fluid Samples: 0 Num Gas Bombs: 0 Serial #:
 Laboratory Name: Laboratory Location:
 Recovery Comments: RW is .307 @ 59.5 F = 26000 ppm

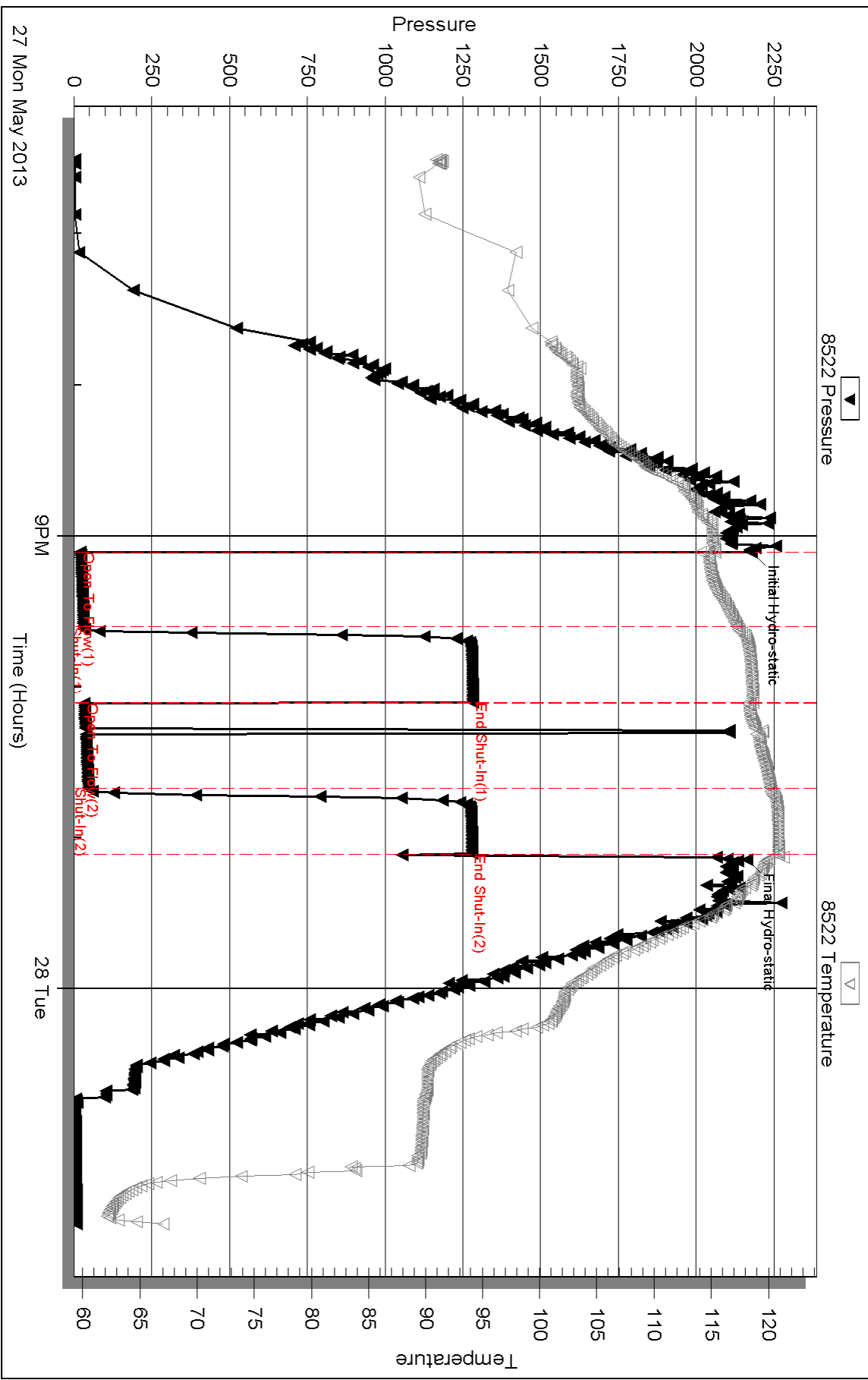
Serial #: 8522

Outside Hartman Oil Co

Wilkinson #3-22

DST Test Number: 1

Pressure vs. Time



Triobite Testing, Inc

Ref. No: 53236

Printed: 2013.06.05 @ 09:58:38

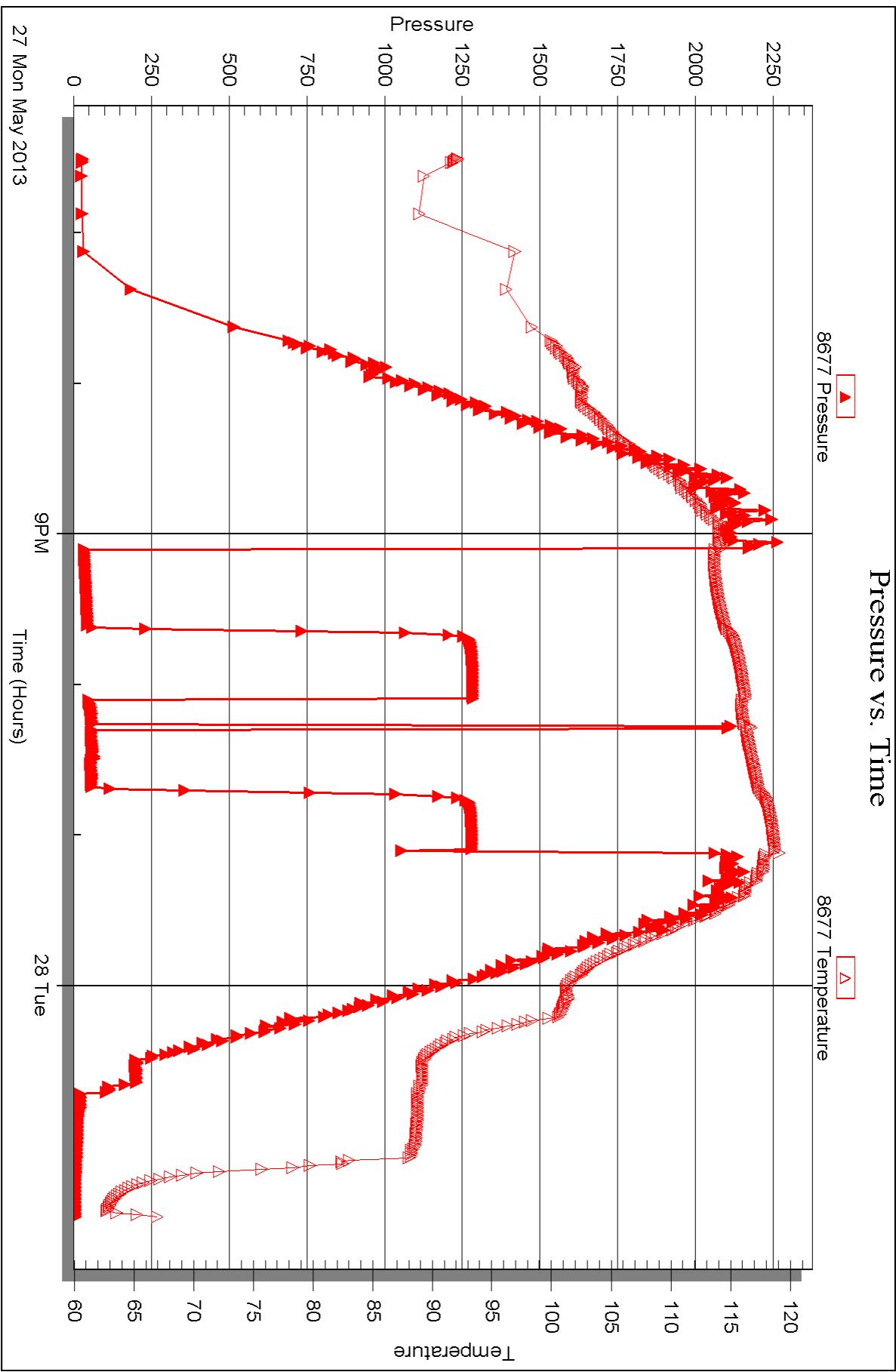
Serial #: 8677

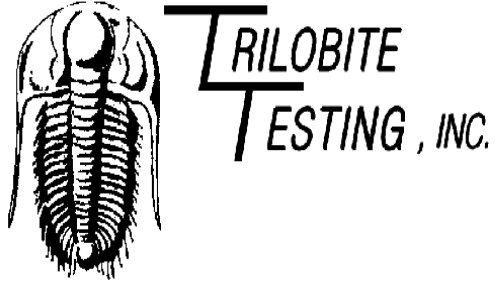
Inside

Hartman Oil Co

Wilkinson #3-22

DST Test Number: 1





DRILL STEM TEST REPORT

Prepared For: **Hartman Oil Co**

10500 E Berkeley SQ PKWY Ste 100
Wichita KS 67206

ATTN: Kitt Noah

Wilkinson #3-22

22-17s-34w Scott KS

Start Date: 2013.05.28 @ 14:17:00

End Date: 2013.05.29 @ 00:03:15

Job Ticket #: 53237 DST #: 2

Trilobite Testing, Inc
PO Box 362 Hays, KS 67601
ph: 785-625-4778 fax: 785-625-5620

Printed: 2013.06.05 @ 09:57:52



**TRILOBITE
TESTING, INC.**

DRILL STEM TEST REPORT

Hartman Oil Co
10500 E Berkeley SQ PKWY Ste 100
Wichita KS 67206
ATTN: Kitt Noah

22-17s-34w Scott KS
Wilkinson #3-22
Job Ticket: 53237 **DST#: 2**
Test Start: 2013.05.28 @ 14:17:00

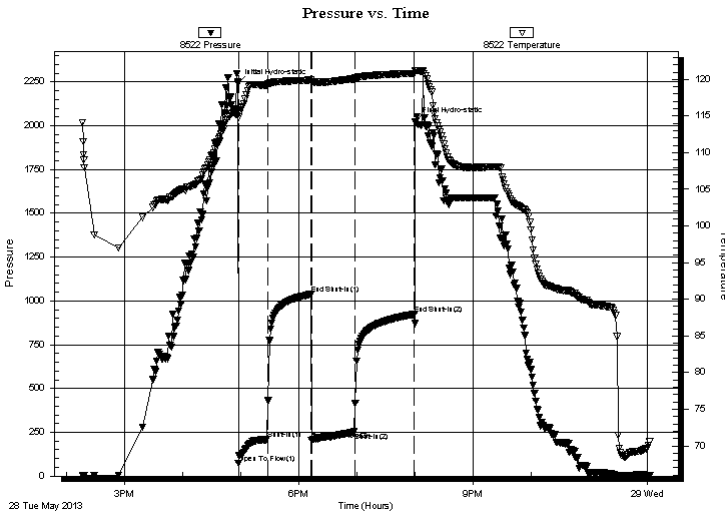
GENERAL INFORMATION:

Formation: **Marmaton A-B**
Deviated: No Whipstock: ft (KB)
Time Tool Opened: 16:57:45
Time Test Ended: 00:03:15
Interval: **4438.00 ft (KB) To 4506.00 ft (KB) (TVD)**
Total Depth: 4532.00 ft (KB) (TVD)
Hole Diameter: 7.88 inches Hole Condition: Good
Test Type: Conventional Bottom Hole (Reset)
Tester: Bradley Walter
Unit No: 53
Reference Elevations: 3097.00 ft (KB)
3086.00 ft (CF)
KB to GR/CF: 11.00 ft

Serial #: 8522 Outside
Press @ Run Depth: 252.88 psig @ 4439.00 ft (KB) Capacity: 8000.00 psig
Start Date: 2013.05.28 End Date: 2013.05.29 Last Calib.: 2013.05.29
Start Time: 14:17:05 End Time: 00:03:15 Time On Btm: 2013.05.28 @ 16:57:30
Time Off Btm: 2013.05.28 @ 20:00:00

TEST COMMENT: IF: BOB in 8 1/2 mins
IS: Surface blow
FF: BOB in 22 mins
FS: Surface blow

PRESSURE SUMMARY



Time (Min.)	Pressure (psig)	Temp (deg F)	Annotation
0	2242.51	115.76	Initial Hydro-static
1	72.29	114.85	Open To Flow (1)
31	208.91	119.24	Shut-In(1)
76	1037.91	119.90	End Shut-In(1)
76	205.17	119.64	Open To Flow (2)
121	252.88	120.08	Shut-In(2)
182	923.61	120.83	End Shut-In(2)
183	2023.67	121.22	Final Hydro-static

Recovery

Length (ft)	Description	Volume (bbl)
190.00	Gw mco 25g 15w 20m 40o	0.93
275.00	Gmco 45g 45o 5m 5w	1.84
115.00	Go 60o 40g	1.14

* Recovery from multiple tests

Gas Rates

Choke (inches)	Pressure (psig)	Gas Rate (Mcf/d)



**TRILOBITE
TESTING, INC.**

DRILL STEM TEST REPORT

TOOL DIAGRAM

Hartman Oil Co

22-17s-34w Scott KS

10500 E Berkeley SQ PKWY Ste 100
Wichita KS 67206

Wilkinson #3-22

Job Ticket: 53237

DST#: 2

ATTN: Kitt Noah

Test Start: 2013.05.28 @ 14:17:00

Tool Information

Drill Pipe:	Length: 4058.00 ft	Diameter: 3.20 inches	Volume: 40.37 bbl	Tool Weight: 2500.00 lb
Heavy Wt. Pipe:	Length: 0.00 ft	Diameter: 0.00 inches	Volume: 0.00 bbl	Weight set on Packer: 25000.00 lb
Drill Collar:	Length: 368.00 ft	Diameter: 2.25 inches	Volume: 1.81 bbl	Weight to Pull Loose: 85000.00 lb
			<u>Total Volume: 42.18 bbl</u>	Tool Chased 0.00 ft
Drill Pipe Above KB:	15.00 ft			String Weight: Initial 70000.00 lb
Depth to Top Packer:	4438.00 ft			Final 73000.00 lb
Depth to Bottom Packer:	ft			
Interval between Packers:	68.00 ft			
Tool Length:	95.00 ft			
Number of Packers:	2	Diameter: 6.75 inches		

Tool Comments:

Tool Description	Length (ft)	Serial No.	Position	Depth (ft)	Accum. Lengths
------------------	-------------	------------	----------	------------	----------------

Change Over Sub	1.00			4412.00	
Shut In Tool	5.00			4417.00	
Hydraulic tool	5.00			4422.00	
Jars	5.00			4427.00	
Safety Joint	2.00			4429.00	
Packer	5.00			4434.00	27.00 Bottom Of Top Packer
Packer	4.00			4438.00	
Stubb	1.00			4439.00	
Recorder	0.00	8677	Inside	4439.00	
Recorder	0.00	8522	Outside	4439.00	
Perforations	30.00			4469.00	
Change Over Sub	1.00			4470.00	
Drill Pipe	32.00			4502.00	
Change Over Sub	1.00			4503.00	
Bullnose	3.00			4506.00	68.00 Bottom Packers & Anchor

Total Tool Length: 95.00



**TRILOBITE
TESTING, INC.**

DRILL STEM TEST REPORT

FLUID SUMMARY

Hartman Oil Co

22-17s-34w Scott KS

10500 E Berkeley SQ PKWY Ste 100
Wichita KS 67206

Wilkinson #3-22

Job Ticket: 53237

DST#: 2

ATTN: Kitt Noah

Test Start: 2013.05.28 @ 14:17:00

Mud and Cushion Information

Mud Type: Gel Chem

Cushion Type:

Oil API:

27 deg API

Mud Weight: 9.00 lb/gal

Cushion Length:

ft

Water Salinity:

0 ppm

Viscosity: 54.00 sec/qt

Cushion Volume:

bbbl

Water Loss: 8.76 in³

Gas Cushion Type:

Resistivity: ohm.m

Gas Cushion Pressure:

psig

Salinity: 6000.00 ppm

Filter Cake: 1.00 inches

Recovery Information

Recovery Table

Length ft	Description	Volume bbbl
190.00	Gw mco 25g 15w 20m 40o	0.934
275.00	Gmco 45g 45o 5m 5w	1.840
115.00	Go 60o 40g	1.144

Total Length: 580.00 ft Total Volume: 3.918 bbl

Num Fluid Samples: 0

Num Gas Bombs: 0

Serial #:

Laboratory Name:

Laboratory Location:

Recovery Comments:

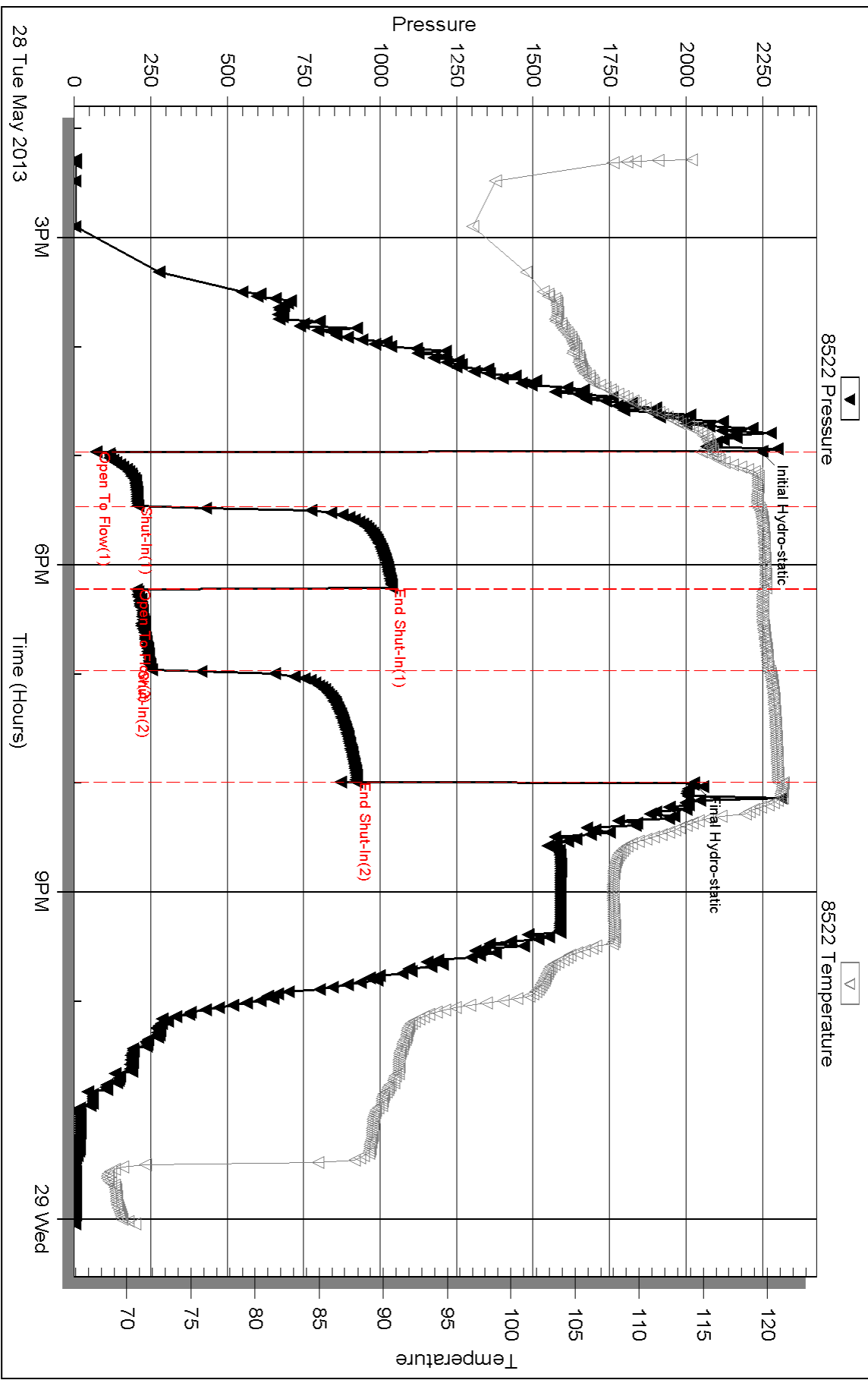
Serial #: 8522

Outside Hartman Oil Co

Wilkinson #3-22

DST Test Number: 2

Pressure vs. Time



Triobite Testing, Inc

Ref. No: 53237

Printed: 2013.06.05 @ 09:57:55

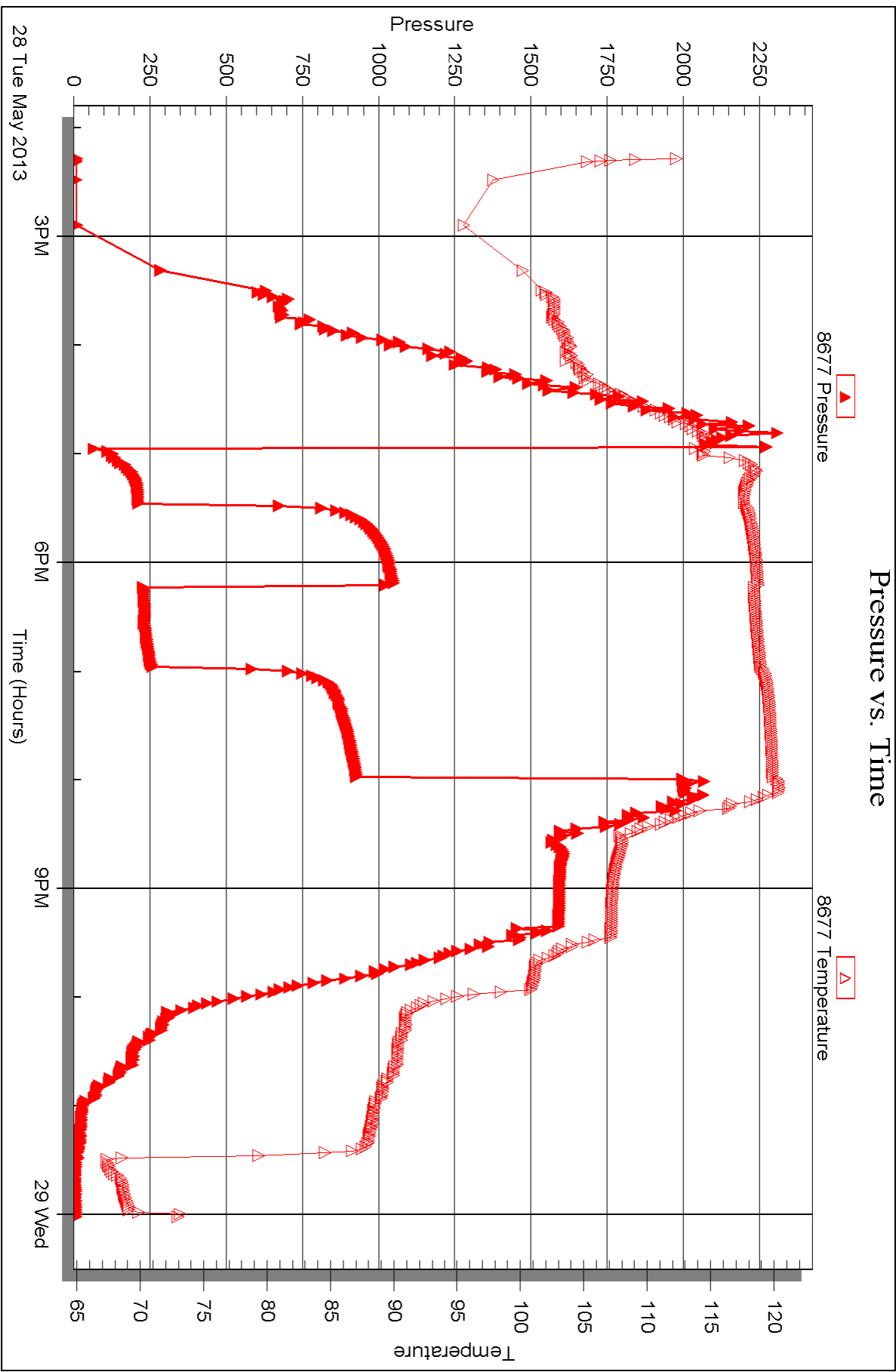
Serial #: 8677

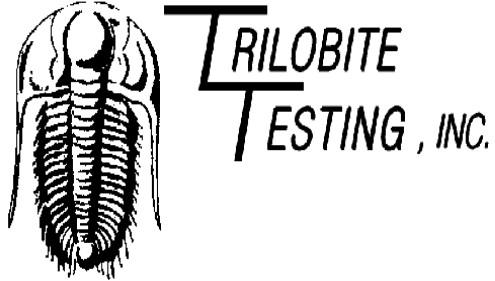
Inside

Hartman Oil Co

Wilkinson #3-22

DST Test Number: 2





DRILL STEM TEST REPORT

Prepared For: **Hartman Oil Co**

10500 E Berkeley SQ PKWY Ste 100
Wichita KS 67206

ATTN: Kitt Noah

Wilkinson #3-22

22-17s-34w Scott KS

Start Date: 2013.05.29 @ 09:37:00

End Date: 2013.05.29 @ 17:51:00

Job Ticket #: 53238 DST #: 3

Trilobite Testing, Inc
PO Box 362 Hays, KS 67601
ph: 785-625-4778 fax: 785-625-5620

Printed: 2013.06.05 @ 09:57:09

Hartman Oil Co
22-17s-34w Scott KS
Wilkinson #3-22
DST # 3
Altamont "C"
2013.05.29



**TRILOBITE
TESTING, INC.**

DRILL STEM TEST REPORT

Hartman Oil Co
10500 E Berkeley SQ PKWY Ste 100
Wichita KS 67206
ATTN: Kitt Noah

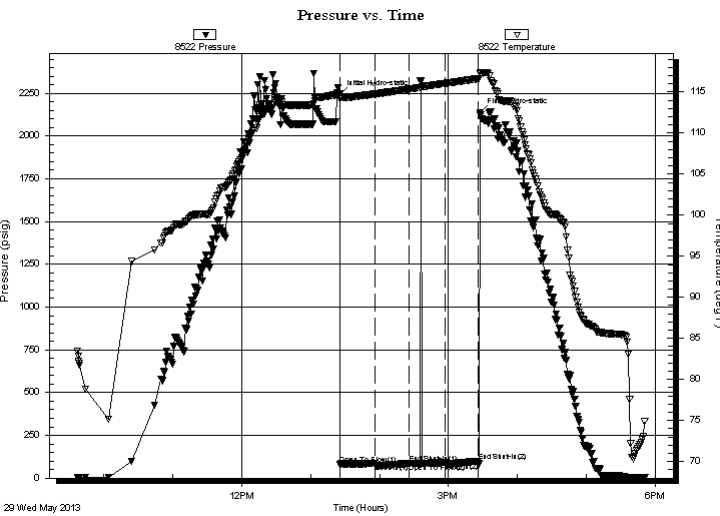
22-17s-34w Scott KS
Wilkinson #3-22
Job Ticket: 53238 **DST#: 3**
Test Start: 2013.05.29 @ 09:37:00

GENERAL INFORMATION:

Formation: **Altamont "C"**
Deviated: No Whipstock: ft (KB)
Time Tool Opened: 13:25:30
Time Test Ended: 17:51:00
Interval: **4506.00 ft (KB) To 4535.00 ft (KB) (TVD)**
Total Depth: 4535.00 ft (KB) (TVD)
Hole Diameter: 7.88 inches Hole Condition: Good
Test Type: Conventional Bottom Hole (Reset)
Tester: Bradley Walter
Unit No: 53
Reference Elevations: 3097.00 ft (KB)
3086.00 ft (CF)
KB to GR/CF: 11.00 ft

Serial #: 8522 Outside
Press @ Run Depth: 91.82 psig @ 4507.00 ft (KB) Capacity: 8000.00 psig
Start Date: 2013.05.29 End Date: 2013.05.29 Last Calib.: 2013.05.29
Start Time: 09:37:05 End Time: 17:50:59 Time On Btm: 2013.05.29 @ 13:25:15
Time Off Btm: 2013.05.29 @ 15:27:30

TEST COMMENT: IF: Surface blow died in 5 mins
IS: No return
FF: No blow flushed tool
FS: No return



PRESSURE SUMMARY

Time (Min.)	Pressure (psig)	Temp (deg F)	Annotation
0	2243.08	114.86	Initial Hydro-static
1	82.14	114.13	Open To Flow (1)
31	85.29	114.76	Shut-In(1)
60	86.88	115.35	End Shut-In(1)
61	84.47	115.36	Open To Flow (2)
92	91.82	116.06	Shut-In(2)
121	99.08	116.62	End Shut-In(2)
123	2136.29	117.37	Final Hydro-static

Recovery

Length (ft)	Description	Volume (bbl)
100.00	Mud 100m	0.49

* Recovery from multiple tests

Gas Rates

Choke (inches)	Pressure (psig)	Gas Rate (Mcf/d)



**TRILOBITE
TESTING, INC.**

DRILL STEM TEST REPORT

TOOL DIAGRAM

Hartman Oil Co
10500 E Berkeley SQ PKWY Ste 100
Wichita KS 67206
ATTN: Kitt Noah

22-17s-34w Scott KS
Wilkinson #3-22
Job Ticket: 53238 **DST#: 3**
Test Start: 2013.05.29 @ 09:37:00

Tool Information

Drill Pipe:	Length: 4125.00 ft	Diameter: 3.20 inches	Volume: 41.03 bbl	Tool Weight: 2500.00 lb
Heavy Wt. Pipe:	Length: 0.00 ft	Diameter: inches	Volume: 0.00 bbl	Weight set on Packer: 25000.00 lb
Drill Collar:	Length: 368.00 ft	Diameter: 2.25 inches	Volume: 1.81 bbl	Weight to Pull Loose: 85000.00 lb
			<u>Total Volume: 42.84 bbl</u>	Tool Chased 0.00 ft
Drill Pipe Above KB:	7.00 ft			String Weight: Initial 72000.00 lb
Depth to Top Packer:	4506.00 ft			Final 72000.00 lb
Depth to Bottom Packer:	ft			
Interval between Packers:	29.00 ft			
Tool Length:	49.00 ft			
Number of Packers:	2	Diameter: 6.75 inches		

Tool Comments:

Tool Description	Length (ft)	Serial No.	Position	Depth (ft)	Accum. Lengths
Change Over Sub	1.00			4487.00	
Shut In Tool	5.00			4492.00	
Hydraulic tool	5.00			4497.00	
Packer	5.00			4502.00	20.00 Bottom Of Top Packer
Packer	4.00			4506.00	
Stubb	1.00			4507.00	
Recorder	0.00	8677	Inside	4507.00	
Recorder	0.00	8522	Outside	4507.00	
Perforations	25.00			4532.00	
Bullnose	3.00			4535.00	29.00 Bottom Packers & Anchor
Total Tool Length:	49.00				



**TRILOBITE
TESTING, INC.**

DRILL STEM TEST REPORT

FLUID SUMMARY

Hartman Oil Co
10500 E Berkeley SQ PKWY Ste 100
Wichita KS 67206
ATTN: Kitt Noah

22-17s-34w Scott KS
Wilkinson #3-22
Job Ticket: 53238 **DST#: 3**
Test Start: 2013.05.29 @ 09:37:00

Mud and Cushion Information

Mud Type: Gel Chem	Cushion Type:	Oil API:	0 deg API
Mud Weight: 9.00 lb/gal	Cushion Length: ft	Water Salinity:	0 ppm
Viscosity: 55.00 sec/qt	Cushion Volume: bbl		
Water Loss: 9.58 in ³	Gas Cushion Type:		
Resistivity: ohm.m	Gas Cushion Pressure: psig		
Salinity: 9000.00 ppm			
Filter Cake: 1.00 inches			

Recovery Information

Recovery Table

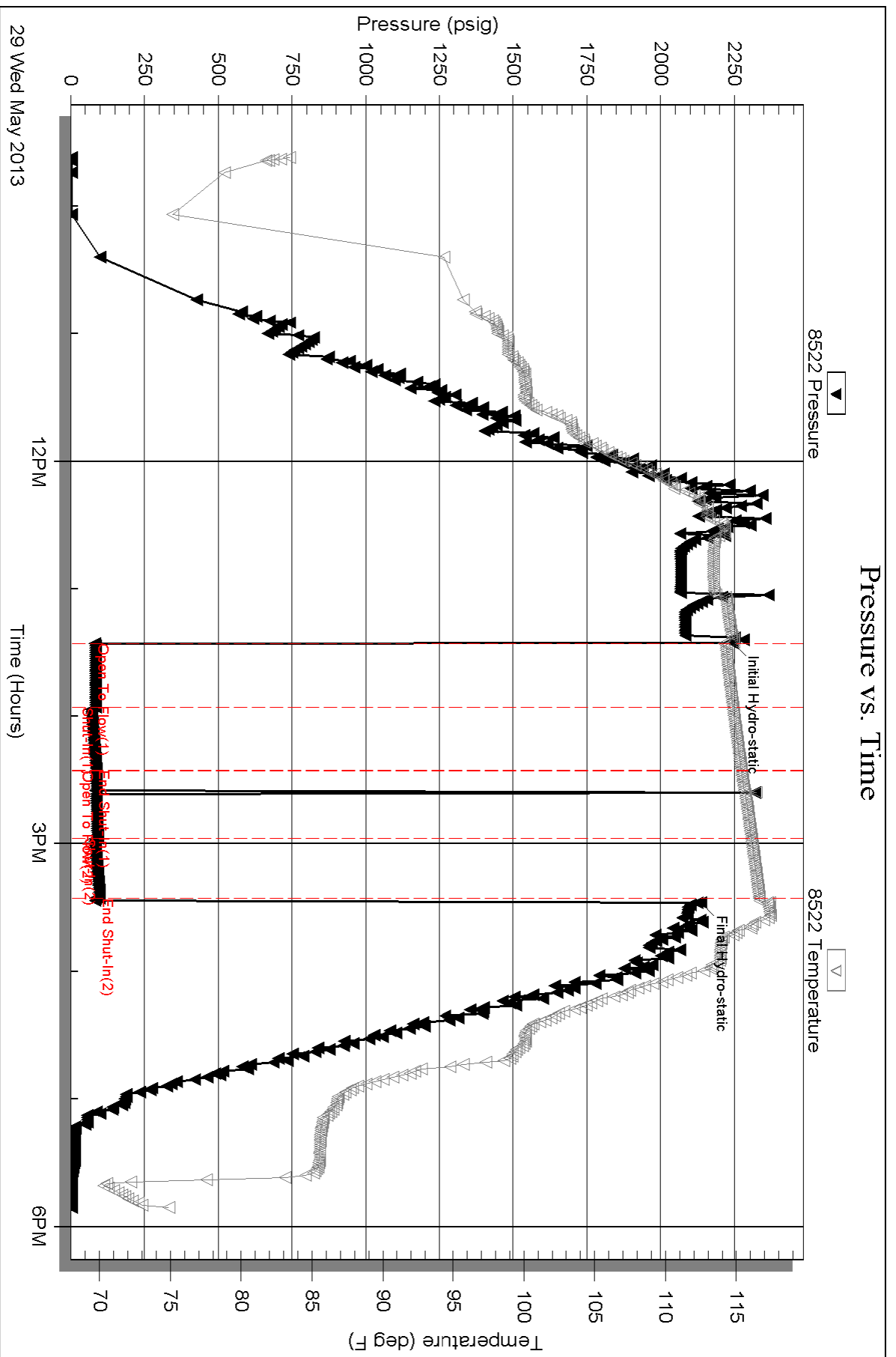
Length ft	Description	Volume bbl
100.00	Mud 100m	0.492

Total Length: 100.00 ft Total Volume: 0.492 bbl

Num Fluid Samples: 0 Num Gas Bombs: 0 Serial #:

Laboratory Name: Laboratory Location:

Recovery Comments: suspect took on fluid w hen going through bridge at 2370'



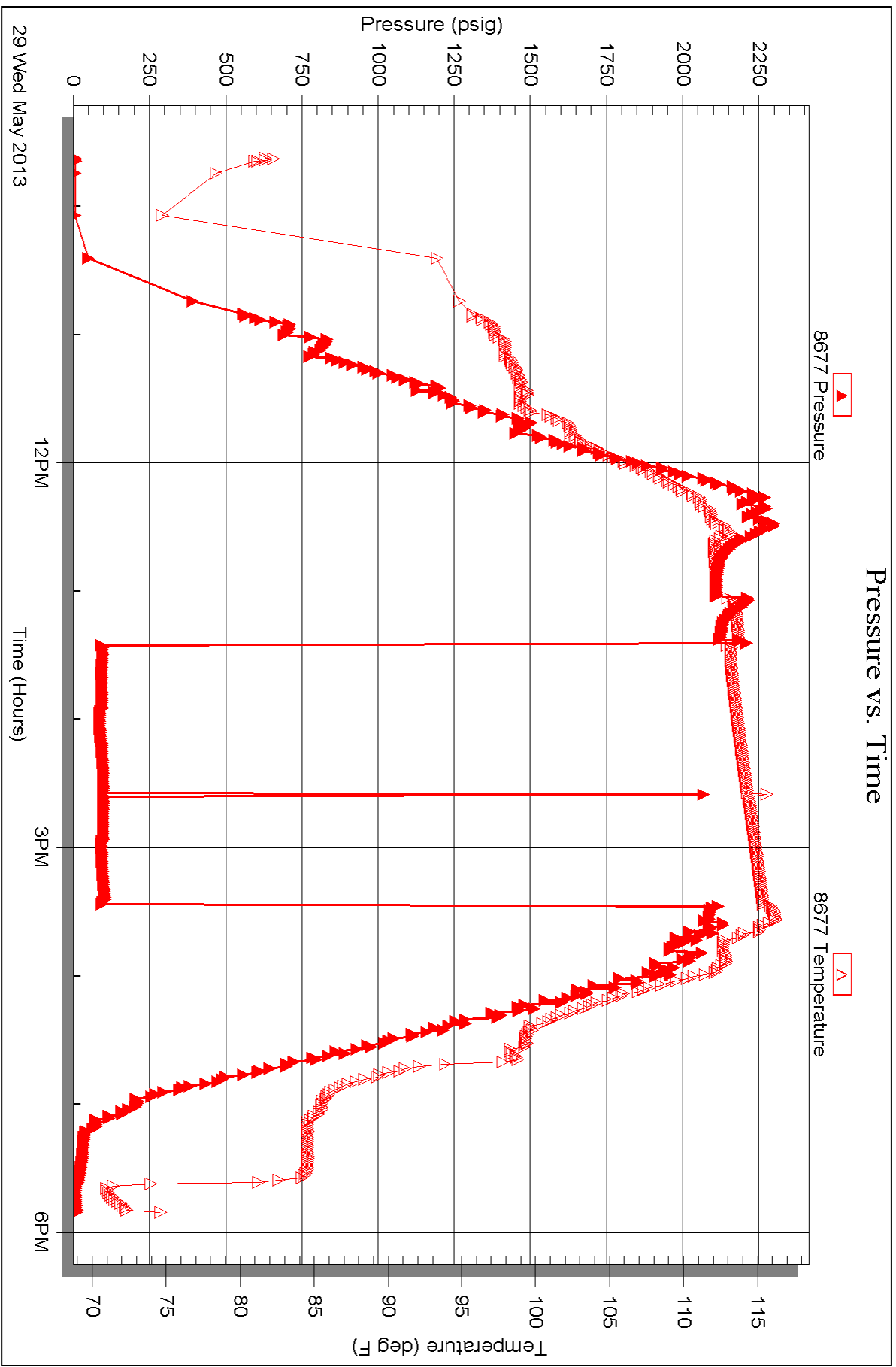
Serial #: 8677

Inside

Hartman Oil Co

Wilkinson #3-22

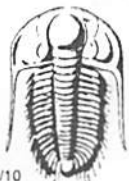
DST Test Number: 3



Triobite Testing, Inc

Ref. No: 53238

Printed: 2013.06.05 @ 09:57:12



TRILOBITE TESTING INC.

1515 Commerce Parkway • Hays, Kansas 67601

Test Ticket

NO. 53236

Well Name & No. Wilkinson #3-22 Test No. 1 Date 5-27-13
 Company Hartman Oil Co. Elevation 3097 KB 3086 GL
 Address 10500 E Berkeley Sq PKWY Ste 100 - Wichita, KS 67206
 Co. Rep / Geo. Kitt Noah Rig H2 Rig #1
 Location: Sec. 22 Twp. 17S Rge. 34W Co. Scott State KS

Interval Tested 4409 - 44-32 Zone Tested Pleasanton
 Anchor Length 23' Drill Pipe Run 4026 Mud Wt. 9.2
 Top Packer Depth 4404 Drill Collars Run 408-33 368 Vis 55
 Bottom Packer Depth 4409 Wt. Pipe Run 0 WL 8.8
 Total Depth 4432 Chlorides 4900 ppm System LCM #2

Blow Description IF: Weak surface blow - Died in 20 min
ISD: No Return
FF: no blow
FSI: No Return

Rec	Feet of	%gas	%oil	%water	%mud
<u>15</u>	<u>MCW (oil specs)</u>			<u>50</u>	<u>50</u>
Rec	Feet of	%gas	%oil	%water	%mud
Rec	Feet of	%gas	%oil	%water	%mud
Rec	Feet of	%gas	%oil	%water	%mud
Rec	Feet of	%gas	%oil	%water	%mud

Rec Total 15' BHT 121 Gravity — API RW 307 @ 59.5 °F Chlorides 26000 ppm

(A) Initial Hydrostatic 2178 Test 1250 T-On Location 16:00
 (B) First Initial Flow 20 Jars 250 T-Started 18:30
 (C) First Final Flow 31 Safety Joint 75 T-Open 21:06
 (D) Initial Shut-In 12:82 Circ Sub _____ T-Pulled 23:06
 (E) Second Initial Flow 33 Hourly Standby _____ T-Out 01:33
 (F) Second Final Flow 46 Mileage 29 RT 44.95 Comments _____
 (G) Final Shut-In 12:80 Sampler _____
 (H) Final Hydrostatic 2163 Straddle _____ Ruined Shale Packer _____
 Shale Packer _____ Ruined Packer _____

Initial Open 30 Extra Packer _____ Extra Copies _____
 Initial Shut-In 30 Extra Recorder _____ Sub Total 0
 Final Flow 30 Day Standby _____ Total 1769.95
 Final Shut-In 30 Accessibility 150 MP/DST Disc _____
 Sub Total 1769.95

Approved By _____ Our Representative [Signature]

Trilobite Testing Inc. shall not be liable for damaged of any kind of the property or personnel of the one for whom a test is made, or for any loss suffered or sustained, directly or indirectly, through the use of its equipment, or its statements or opinion concerning the results of any test, tools lost or damaged in the hole shall be paid for at cost by the party for whom the test is made.

Corneio Landau Training



TRILOBITE TESTING INC.

1515 Commerce Parkway • Hays, Kansas 67601

Test Ticket

NO. 53237

Well Name & No. Wilkinson # 3-22 Test No. 2 Date 5-28-13
 Company Hartman Oil Co Elevation 3097 KB 3086 GL
 Address 10500 E Berkeley Sq PKWY Ste 100, Wichita, KS 67206
 Co. Rep / Geo. Kitt Noah Rig H2 Rig # 1
 Location: Sec. 22 Twp. 17S Rge. 34W Co. Scott State KS

Interval Tested 4438 - 4506 Zone Tested Marmaton A-B
 Anchor Length 68 Drill Pipe Run 4058 Mud Wt. 9.2
 Top Packer Depth 4433 Drill Collars Run 368 Vis 54
 Bottom Packer Depth 4438 Wt. Pipe Run 0 WL 88
 Total Depth 4506 Chlorides 6,000 ppm System LCM 2

Blow Description IF: BOB in 8.5 min
ISI: surface Blow
FF: BOB in 22 min
FST: surface Blow

Rec	Feet of	%gas	%oil	%water	%mud
<u>115</u>	<u>Gwmco</u>	<u>2500</u>	<u>40</u>	<u>16</u>	<u>20</u>
<u>275</u>	<u>Gmco</u>	<u>45</u>	<u>45</u>	<u>5</u>	<u>5</u>
<u>190</u>	<u>G0</u>	<u>40</u>	<u>60</u>		
		%gas	%oil	%water	%mud
		%gas	%oil	%water	%mud

Rec Total 580 BHT 121 Gravity 27 API RW — @ — °F Chlorides — ppm

(A) Initial Hydrostatic 2243 Test 1250 T-On Location 13:30
 (B) First Initial Flow 72 ~~Test~~ T-Started 14:17
 (C) First Final Flow 209 ~~Safety Joint~~ T-Open 16:58
 (D) Initial Shut-In 1038 Circ Sub T-Pulled 19:58
 (E) Second Initial Flow 2085 Hourly Standby T-Out 24:03
 (F) Second Final Flow 253 Mileage 29 RIT 44.95
 (G) Final Shut-In 924 Sampler
 (H) Final Hydrostatic 2024 Straddle
 Shale Packer
 Shale Packer
 Extra Packer
 Extra Recorder
 Day Standby
 Accessibility 150
 Sub Total 1444.95

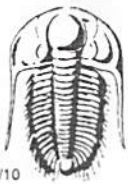
Initial Open 30
 Initial Shut-In 45
 Final Flow 45
 Final Shut-In 60

MP/DST Disc't —

Approved By _____ Our Representative [Signature]

TriLOBITE TESTING INC. shall not be liable for damaged of any kind of the property or personnel of the one for whom a test is made, or for any loss suffered or sustained, directly or indirectly, through the use of its equipment, or its statements or opinion concerning the results of any test, tools lost or damaged in the hole shall be paid for at cost by the party for whom the test is made.

Comelo Land Trinee



TRILOBITE TESTING INC.

1515 Commerce Parkway • Hays, Kansas 67601

Test Ticket

NO. 53238

4/10

Well Name & No. Wilkinson #3-22 Test No. 3 Date 5-29-13
 Company Hartman Oil Co. Elevation 3097 KB 3086 GL
 Address 10500 E Berkeley Sq PKWY Ste 100 Wichita, KS 67206
 Co. Rep / Geo. Kitt Noah Rig H/Z Rig #1
 Location: Sec. 22 Twp. 17S Rge. 34W Co. Scott State Ks

Interval Tested 4506 - 4535 Zone Tested Altamont "C"
 Anchor Length 29' Drill Pipe Run ~~4125~~ 4125 Mud Wt. 9.2
 Top Packer Depth 4501 Drill Collars Run 368 Vis 55
 Bottom Packer Depth 4506 Wt. Pipe Run 0 WL 9.6
 Total Depth 4535 Chlorides 9000 ppm System LCM 2
 Blow Description IF: surface blow died in 5 min
ISI: NO return
FF: No blow - Flushed Tool
FSI: No Return

Rec	Feet of	%gas	%oil	%water	%mud
100	mud			100	

Rec Total 100 BHT 117 Gravity _____ API RW _____ @ _____ °F Chlorides _____ ppm

(A) Initial Hydrostatic 2243 Test 1250 T-On Location 9:15
 (B) First Initial Flow 82 Jars _____ T-Started 9:37
 (C) First Final Flow 85 Safety Joint _____ T-Open 13:26
 (D) Initial Shut-In 87 Circ Sub _____ T-Pulled 15:26
 (E) Second Initial Flow 84 Hourly Standby _____ T-Out 17:51
 (F) Second Final Flow 92 Mileage 29 R/T 44.95 Comments _____
 (G) Final Shut-In 99 Sampler _____
 (H) Final Hydrostatic 2136 Straddle _____ Ruined Shale Packer _____
 Shale Packer _____ Ruined Packer _____
 Extra Packer _____ Extra Copies _____
 Initial Open 30 Extra Recorder _____ Sub Total 0
 Initial Shut-In 30 Day Standby _____ Total 1444.95
 Final Flow 30 Accessibility 150 MP/DST Disc't _____
 Final Shut-In 30 Sub Total 1444.95

Approved By _____ Our Representative [Signature]
 Trilobite Testing Inc. shall not be liable for damaged of any kind of the property or personnel of the one for whom a test is made, or for any loss suffered or sustained, directly or indirectly, through the use of its equipment, or its statements or opinion concerning the results of any test, tools lost or damaged in the hole shall be paid for at cost by the party for whom the test is made.
[Signature] Training