

COMPANY: Michael Oil LLC
 WELL: Richmond # 3-34
 FIELD: Unlabeled
 LOCATION: 11201 Fwy & S94 Fwy
 SEC. 34 TWP. 18S RGE. 17W
 COUNTY: Rooks
 STATE: Kansas
 OPERATOR: Michael Oil LLC
 CONTRACTOR: Discovery Drilling, Inc.
 COMM: 4-12-13
 CASING RECORD: 5 1/2" @ 3400'
 SURF: 45' @ 220' PROD: 5 1/2" @ 3400'
 TOTAL DEPTH DRILLERS: 3402'
 TOTAL DEPTH LOG: 3402'

FORMATION	START TOP	ELECTRICAL LOG	SURF. RES.	STRUCTURAL POSITION
Top Anhydrite	1145	1157	+1342	+5
Base Anhydrite	1145	1143	+1724	+3
Topeka	2813	2872	-983	-10
Heerner	3094	3096	-1171	-15
Tarantula	3114	3118	-1219	-15
LKC	3136	3138	-1439	-15
BKC	3376	3376	-1531	-15
Camelback Sand	3442	3446	-1571	-15
Arbuckle	3507	3516	-1591	+2

REFERENCE WELL FOR STRUCTURE: Michael Oil LLC
 Richmond # 2-21 4919 Fwy & 2281 Fwy Sec. 27-18S-17W

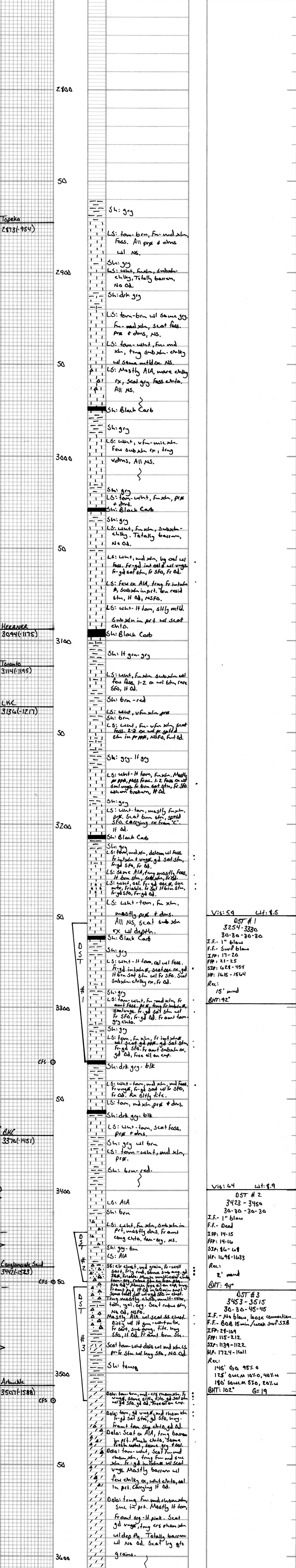
No.	Interval	ISP/Time	ESP/Time	HP/HP	RECOVERY

REMARKS AND RECOMMENDATIONS: Due to structural position, DST recovery & log evaluation, it was decided to set 5 1/2" production casing for completion.

Perforations:
 Arbuckle: 3511-16 (DST #3)
 LKC "K": 3394-46 (Before Abandonment)
 "G": 3234-39
 "F": 3225-28

Legend: Anhydrite, Salt, Sandstone, Shale, Carbsh, Limestone, Ool.Lime, Chert, Dolomite

DRILLING TIME IN MINUTES PER FOOT: Rate of Penetration Decreases (5", 10", 15")



Vis: 64 Lt: 8.9
 OST # 2
 3423-3450
 30-30-30-30
 I.F. - No blow
 F.F. - Dead
 I.F.P. - 14-15
 F.P.P. - 24-25
 S.P.P. - 424-454
 H.P. - 1615-1564
 Rec: 15' mud
 BHT: 92'

Vis: 64 Lt: 8.9
 OST # 3
 3453-3515
 30-30-45-45
 I.F. - No blow, loose connection
 F.F. - 608 15 min / Leak surf. SIB
 I.F.P. - 24-24
 F.P.P. - 1139-1122
 H.P. - 1724-1611
 Rec: 145' G 95%
 125' OMC 107.0, 40%
 180' SMC 57.0, 20%
 BHT: 102' G=10%