



GEOLOGIST'S REPORT  
DRILL TIME &  
SAMPLE LOG

COMPANY **COBALT ENERGY, LLC**  
LEASE **Moeder Trust 'A' #1-22**  
FIELD **Wildcat**

LOCATION **1017' FSL & 1706' FEL**  
SEC. **22** TWP. **11S** RGE. **34W**  
COUNTY **Logan** STATE **KS**  
CONTRACTOR **Martin Drilling Co., Fig #21**

SPUD **06/10/13** COMP **06/17/13**  
RTD **4/28/17** LTD **4/7/21**  
MUD UP **3/5/17** TYPE MUD **Chemical**

SAMPLES SAVED FROM **3900' to RTD**  
DRILLING TIME KEPT FROM **3900' to RTD**  
SAMPLES EXAMINED FROM **3900' to RTD**

GEOLOGICAL SUPERVISION FROM **3810' to RTD**  
GEOLOGIST ON WELL **Corey N. Baker**

FORMATION TOPS  
Anhydrite **2633 (+537)**  
Base of Anhydrite **2657 (+512)**  
Heebner **4048 (-879)**  
Lansing **4088 (-919)**  
Stark **4320 (-1151)**  
Cherokee Shale **4563 (-1394)**  
Mississippian **4708 (-1539)**  
RTD **4782 (-1613)**

ELEVATIONS  
KB **3169'**  
DF \_\_\_\_\_  
GL **3158'**  
Measurements As All From **KB**

CASING  
Conductor **MA**  
Surface **8 5/8" @ 223'**  
Production **None**  
Electrical Surveys  
Dual Induction, Neutron-Density

Microlog & Sonic  
Pioneer Energy Services

Section  
22

REMARKS  
The Moeder Trust 'A' #1-22 ran structurally as predicted but lacked reservoir in all zones encountered. DST's were run over the only shows with negative results and after logs confirmed the lack of commercial zones the well was plugged and abandoned as a dry hole. The samples were extremely fine and beneath the BKC to total depth and carried an abundant amount of red, green and gray shales. Mud properties were good and driller had appropriate amount of weight on bit.

Respectfully Submitted,  
Corey Baker  
Vice President - Exploration  
Cobalt Energy, LLC

API #15-109-21187-00-00

LEGEND

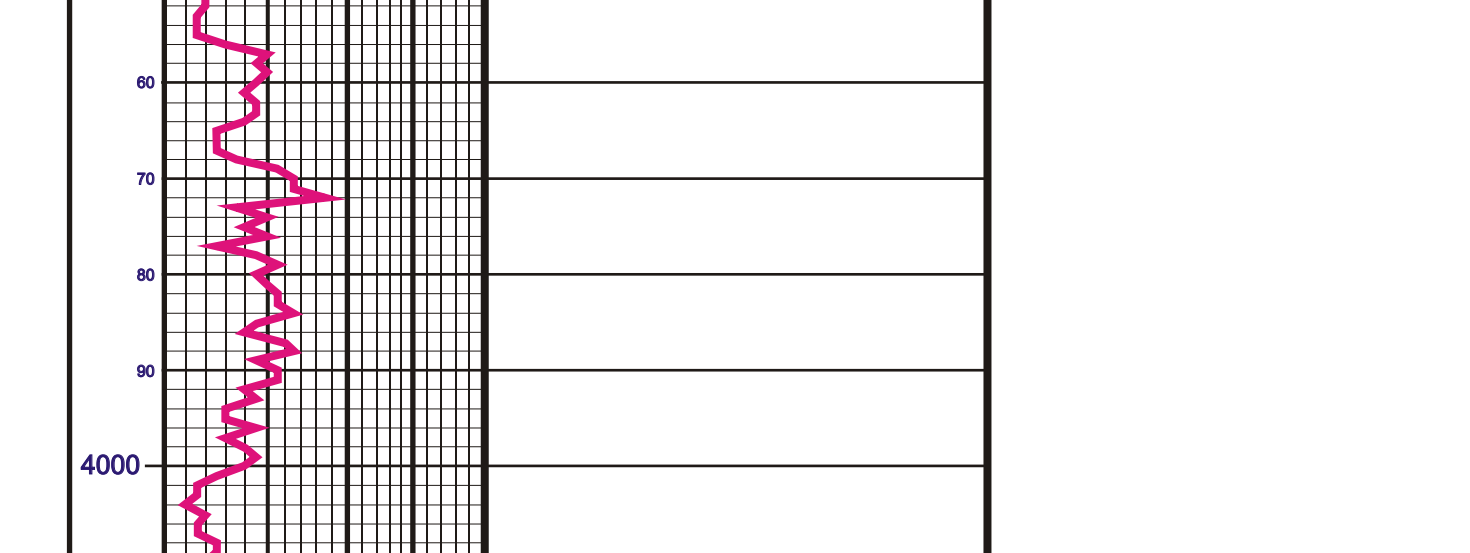


Table with columns: DEPTH, LITHOLOGY, DRILLING TIME IN MINUTES PER FOOT, OIL SHOWS, SAMPLE DESCRIPTION, REMARKS. Contains detailed log data from 2600 to 4800 feet depth.

Table with columns: DEPTH, LITHOLOGY, DRILLING TIME IN MINUTES PER FOOT, OIL SHOWS, SAMPLE DESCRIPTION, REMARKS. Contains detailed log data from 4800 to 4900 feet depth.

Company **COBALT ENERGY, LLC** Elevation **3169' KB**  
Lease **Moeder Trust 'A' #1-22**  
Location **1017' FSL & 1706' FEL** SEC. **22** TWP. **11S** RGE. **34W**  
County **Logan** State **Kansas**