



DRILL STEM TEST REPORT

Prepared For: **Jones Oil LLC.**

112 N. Gray
St. John, KS 67576-1923

ATTN: Jeff Burk

Brehm-Burke #2

2-24s-14w Stafford,KS

Start Date: 2013.04.29 @ 15:53:11

End Date: 2013.04.29 @ 22:35:56

Job Ticket #: 50483 DST #: 1

Trilobite Testing, Inc
PO Box 362 Hays, KS 67601
ph: 785-625-4778 fax: 785-625-5620

Printed: 2013.05.09 @ 11:23:53



**TRILOBITE
TESTING, INC.**

DRILL STEM TEST REPORT

Jones Oil LLC.

2-24s-14w Stafford, KS

112 N. Gray
St. John, KS 67576-1923

Brehm-Burke #2

Job Ticket: 50483

DST#: 1

ATTN: Jeff Burk

Test Start: 2013.04.29 @ 15:53:11

GENERAL INFORMATION:

Formation: **Lansing KC "F"**

Deviated: No Whipstock: ft (KB)

Time Tool Opened: 17:46:26

Time Test Ended: 22:35:56

Test Type: Conventional Bottom Hole (Initial)

Tester: Ryan Reynolds

Unit No: 48

Interval: 3672.00 ft (KB) To 3686.00 ft (KB) (TVD)

Reference Elevations: 1947.00 ft (KB)

Total Depth: 3686.00 ft (KB) (TVD)

1942.00 ft (CF)

Hole Diameter: 7.88 inches Hole Condition: Poor

KB to GR/CF: 5.00 ft

Serial #: 8790

Inside

Press @ Run Depth: 105.36 psig @ 3673.00 ft (KB)

Capacity: 8000.00 psig

Start Date: 2013.04.29

End Date:

2013.04.29

Last Calib.:

2013.04.29

Start Time: 15:53:16

End Time:

22:35:55

Time On Btm:

2013.04.29 @ 17:43:41

Time Off Btm:

2013.04.29 @ 20:46:11

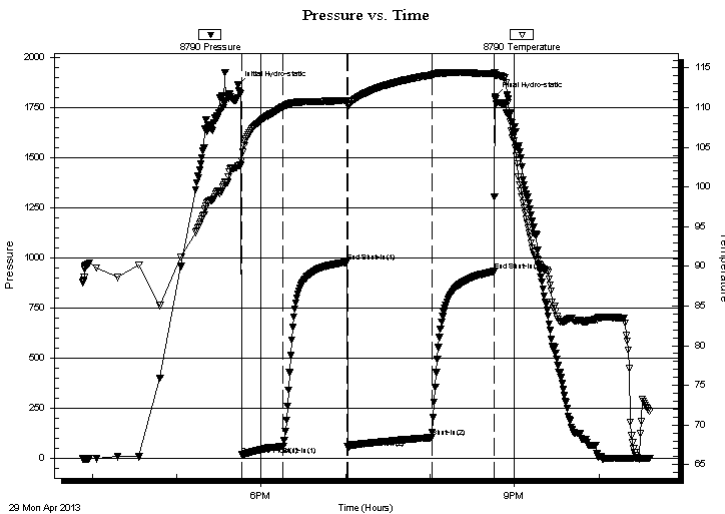
TEST COMMENT: IF: Strong blow . BOB @ 6 1/2 min. No GTS.

IS: Weak surf. Blow

FF: Strong blow . BOB @ 2 min. No GTS.

FS: Weak surf. - 1/2" blow .

PRESSURE SUMMARY



Time (Min.)	Pressure (psig)	Temp (deg F)	Annotation
0	1862.70	102.74	Initial Hydro-static
3	18.43	103.33	Open To Flow (1)
32	60.43	110.15	Shut-In(1)
77	979.67	110.89	End Shut-In(1)
78	53.57	110.19	Open To Flow (2)
138	105.36	114.12	Shut-In(2)
182	934.02	114.26	End Shut-In(2)
183	1803.87	114.17	Final Hydro-static

Recovery

Length (ft)	Description	Volume (bbl)
120.00	GOCW 4%gas, 6%oil, 90%w tr	0.59
105.00	GOWCM 15%gas, 18%oil, 27%w tr, 40%	1.47
0.00	2695' GIP	0.00

Gas Rates

	Choke (inches)	Pressure (psig)	Gas Rate (Mcf/d)



**TRILOBITE
TESTING, INC.**

DRILL STEM TEST REPORT

TOOL DIAGRAM

Jones Oil LLC.

2-24s-14w Stafford,KS

112 N. Gray
St. John, KS 67576-1923

Brehm-Burke #2

Job Ticket: 50483

DST#: 1

ATTN: Jeff Burk

Test Start: 2013.04.29 @ 15:53:11

Tool Information

Drill Pipe:	Length: 3558.00 ft	Diameter: 3.80 inches	Volume: 49.91 bbl	Tool Weight: 2400.00 lb
Heavy Wt. Pipe:	Length: 0.00 ft	Diameter: 0.00 inches	Volume: 0.00 bbl	Weight set on Packer: 25000.00 lb
Drill Collar:	Length: 120.00 ft	Diameter: 2.25 inches	Volume: 0.59 bbl	Weight to Pull Loose: 72000.00 lb
			<u>Total Volume: 50.50 bbl</u>	Tool Chased 0.00 ft
Drill Pipe Above KB:	32.00 ft			String Weight: Initial 61000.00 lb
Depth to Top Packer:	3672.00 ft			Final 61500.00 lb
Depth to Bottom Packer:	ft			
Interval between Packers:	14.00 ft			
Tool Length:	40.00 ft			
Number of Packers:	2	Diameter: 6.75 inches		

Tool Comments:

Tool Description

Tool Description	Length (ft)	Serial No.	Position	Depth (ft)	Accum. Lengths
Shut In Tool	5.00			3651.00	
Hydraulic tool	5.00			3656.00	
Jars	5.00			3661.00	
Safety Joint	2.00			3663.00	
Packer	5.00			3668.00	26.00 Bottom Of Top Packer
Packer	4.00			3672.00	
Stubb	1.00			3673.00	
Recorder	0.00	8790	Inside	3673.00	
Recorder	0.00	8792	Outside	3673.00	
Perforations	10.00			3683.00	
Bullnose	3.00			3686.00	14.00 Bottom Packers & Anchor

Total Tool Length: 40.00



**TRILOBITE
TESTING, INC.**

DRILL STEM TEST REPORT

FLUID SUMMARY

Jones Oil LLC.

2-24s-14w Stafford,KS

112 N. Gray
St. John, KS 67576-1923

Brehm-Burke #2

Job Ticket: 50483

DST#: 1

ATTN: Jeff Burk

Test Start: 2013.04.29 @ 15:53:11

Mud and Cushion Information

Mud Type: Gel Chem

Cushion Type:

Oil API:

deg API

Mud Weight: 9.00 lb/gal

Cushion Length:

ft

Water Salinity:

78000 ppm

Viscosity: 52.00 sec/qt

Cushion Volume:

bbbl

Water Loss: 8.78 in³

Gas Cushion Type:

Resistivity: ohm.m

Gas Cushion Pressure:

psig

Salinity: 8000.00 ppm

Filter Cake: 0.02 inches

Recovery Information

Recovery Table

Length ft	Description	Volume bbl
120.00	GOCW 4%gas, 6%oil, 90%w tr	0.590
105.00	GOWCM 15%gas, 18%oil, 27%w tr, 40%mud	1.473
0.00	2695' GIP	0.000

Total Length: 225.00 ft

Total Volume: 2.063 bbl

Num Fluid Samples: 0

Num Gas Bombs: 0

Serial #: none

Laboratory Name:

Laboratory Location:

Recovery Comments:

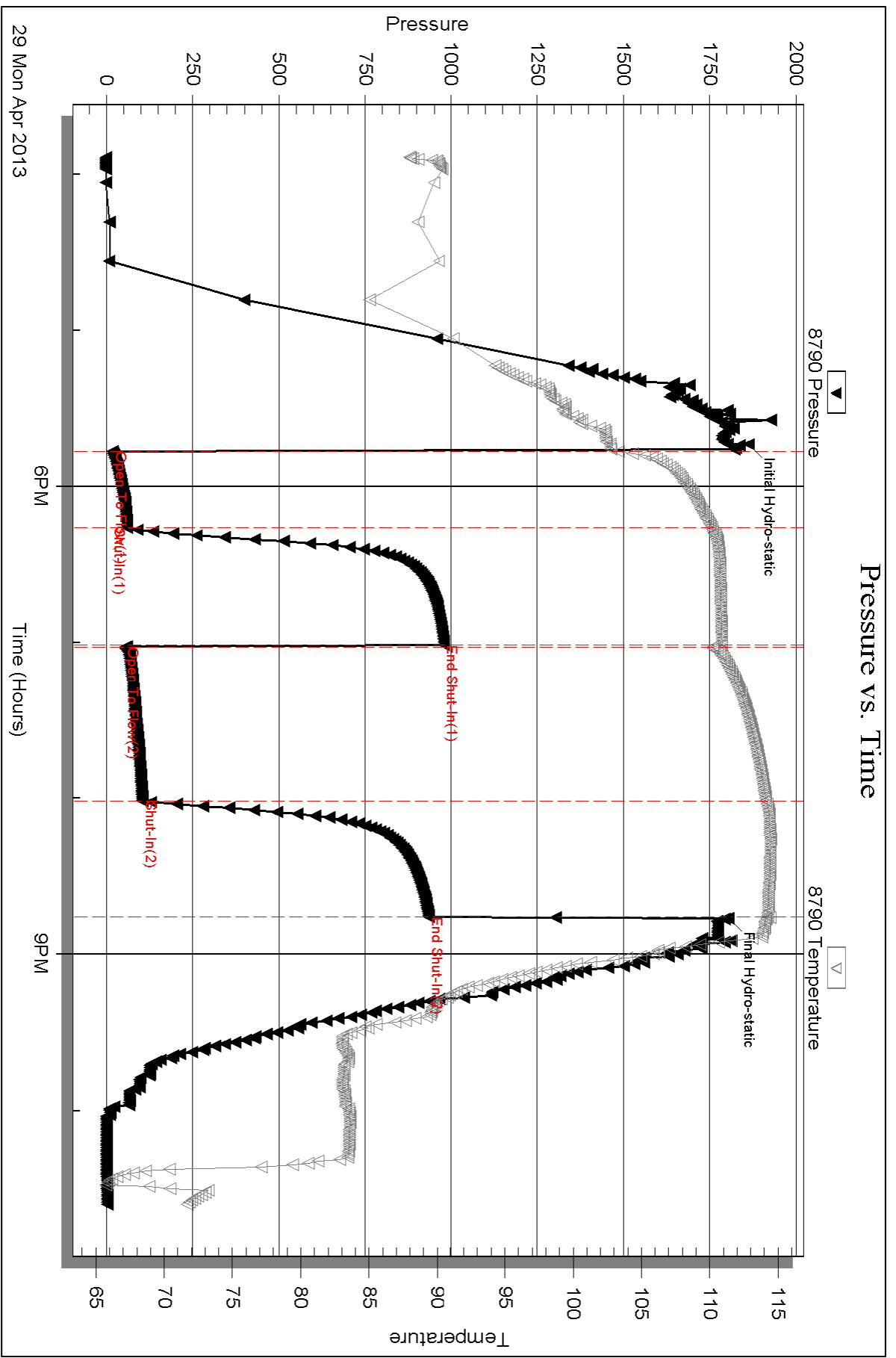
Serial #: 8790

Inside

Jones Oil LLC.

Brehm-Burke #2

DST Test Number: 1



Triobite Testing, Inc

Ref. No: 50483

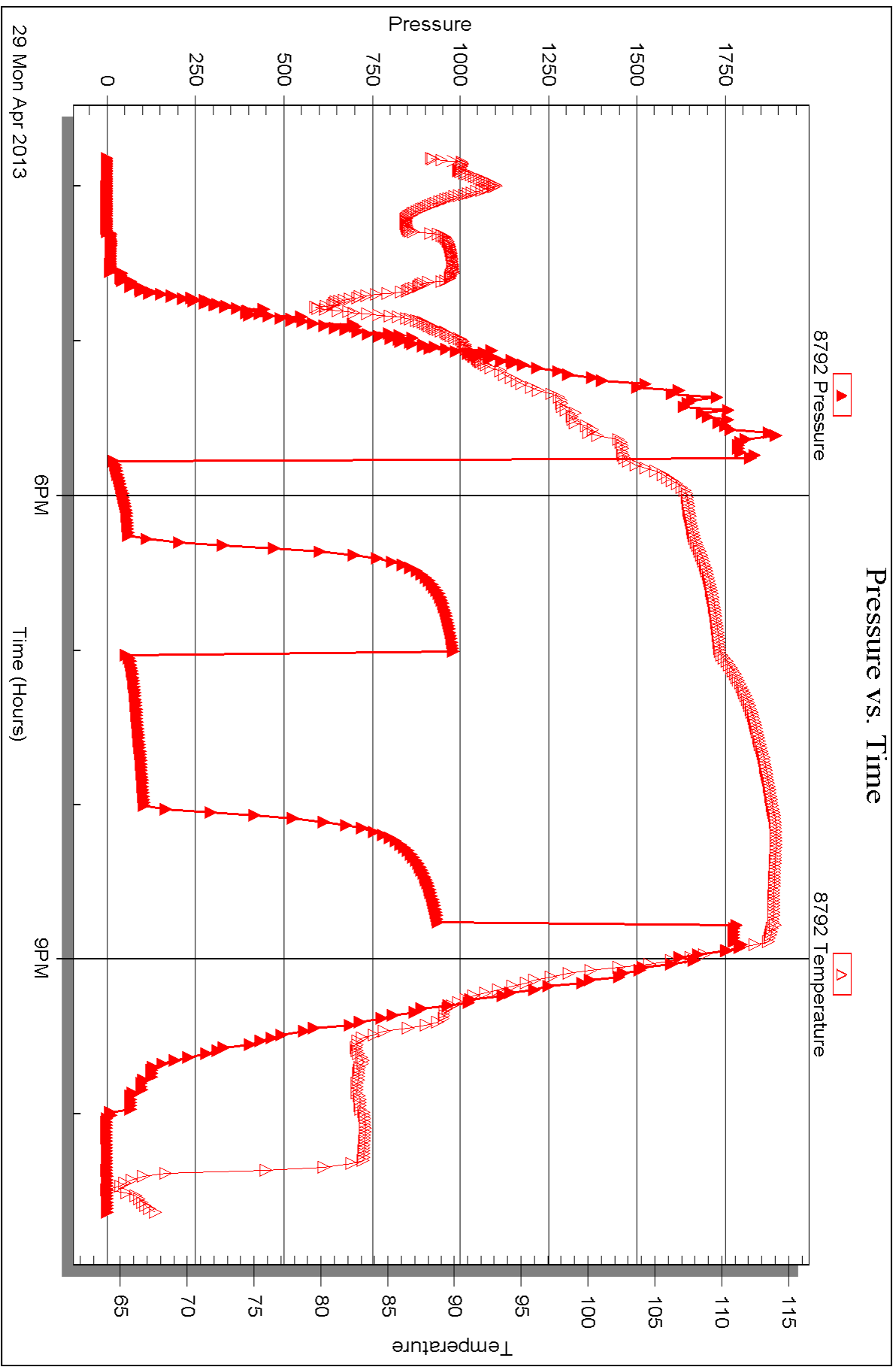
Printed: 2013.05.09 @ 11:23:55

Serial #: 8792

Outside Jones Oil LLC.

Brehm-Burke #2

DST Test Number: 1





DRILL STEM TEST REPORT

Prepared For: **Jones Oil LLC.**

112 N. Gray
St. John, KS 67576-1923

ATTN: Jeff Burk

Brehm-Burke #2

2-24s-14w Stafford,KS

Start Date: 2013.04.30 @ 08:09:37

End Date: 2013.04.30 @ 15:05:22

Job Ticket #: 50484 DST #: 2

Trilobite Testing, Inc
PO Box 362 Hays, KS 67601
ph: 785-625-4778 fax: 785-625-5620

Printed: 2013.05.09 @ 11:26:03

Jones Oil LLC. 2-24s-14w Stafford,KS Brehm-Burke #2 DST # 2 Lansing 2013.04.30



**TRILOBITE
TESTING, INC.**

DRILL STEM TEST REPORT

Jones Oil LLC.

2-24s-14w Stafford,KS

112 N. Gray
St. John, KS 67576-1923

Brehm-Burke #2

Job Ticket: 50484

DST#: 2

ATTN: Jeff Burk

Test Start: 2013.04.30 @ 08:09:37

GENERAL INFORMATION:

Formation: **Lansing**

Deviated: No Whipstock: ft (KB)

Time Tool Opened: 09:59:52

Time Test Ended: 15:05:22

Test Type: Conventional Bottom Hole (Reset)

Tester: Ryan Reynolds

Unit No: 48

Interval: 3726.00 ft (KB) To 3761.00 ft (KB) (TVD)

Reference Elevations: 1947.00 ft (KB)

Total Depth: 3761.00 ft (KB) (TVD)

1942.00 ft (CF)

Hole Diameter: 7.88 inches Hole Condition: Fair

KB to GR/CF: 5.00 ft

Serial #: 8790 Inside

Press @ RunDepth: 172.23 psig @ 3727.00 ft (KB)

Capacity: 8000.00 psig

Start Date: 2013.04.30

End Date: 2013.04.30

Last Calib.: 2013.04.30

Start Time: 08:09:42

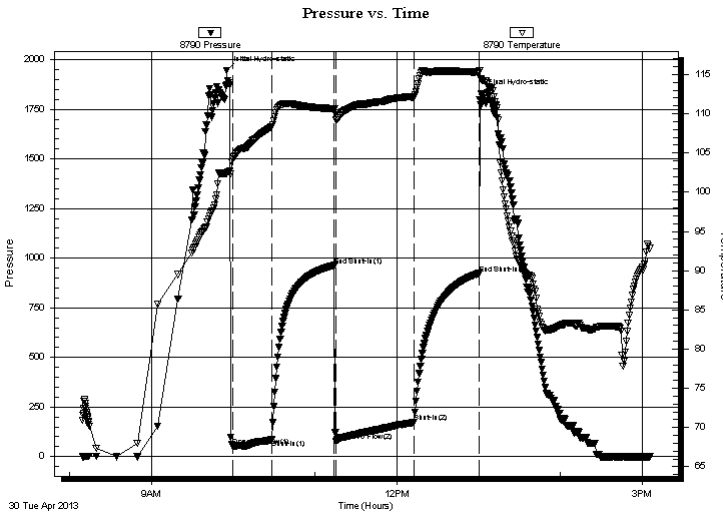
End Time: 15:05:21

Time On Btm: 2013.04.30 @ 09:55:07

Time Off Btm: 2013.04.30 @ 13:01:37

TEST COMMENT: IF: Strong blow . BOB immed. GTS @ 21 min.
IS: Weak blow . surf. - 3/4"
FF: Strong blow . BOB immed. Gauged gas throughout
FS: Strong blow . BOB @ 2 min. after bleed - off.

PRESSURE SUMMARY



Time (Min.)	Pressure (psig)	Temp (deg F)	Annotation
0	1945.90	102.38	Initial Hydro-static
5	52.25	104.24	Open To Flow (1)
34	85.08	108.37	Shut-In(1)
79	963.18	110.65	End Shut-In(1)
81	78.24	109.22	Open To Flow (2)
138	172.23	112.15	Shut-In(2)
185	922.42	115.28	End Shut-In(2)
187	1830.08	114.33	Final Hydro-static

Recovery

Length (ft)	Description	Volume (bbl)
120.00	SLI MWCGO 4%mud, 5%w tr, 16%gas,	70.59il
275.00	SLI MCGO 5%mud, 10%gas, 85%oil	3.86

* Recovery from multiple tests

Gas Rates

	Choke (inches)	Pressure (psig)	Gas Rate (Mcf/d)
First Gas Rate	0.13	10.00	9.13
Last Gas Rate	0.13	21.00	13.25
Max. Gas Rate	0.13	21.00	13.25



**TRILOBITE
TESTING, INC.**

DRILL STEM TEST REPORT

TOOL DIAGRAM

Jones Oil LLC.

2-24s-14w Stafford,KS

112 N. Gray
St. John, KS 67576-1923

Brehm-Burke #2

Job Ticket: 50484

DST#: 2

ATTN: Jeff Burk

Test Start: 2013.04.30 @ 08:09:37

Tool Information

Drill Pipe:	Length: 3590.00 ft	Diameter: 3.80 inches	Volume: 50.36 bbl	Tool Weight: 2400.00 lb
Heavy Wt. Pipe:	Length: 0.00 ft	Diameter: 0.00 inches	Volume: 0.00 bbl	Weight set on Packer: 25000.00 lb
Drill Collar:	Length: 120.00 ft	Diameter: 2.25 inches	Volume: 0.59 bbl	Weight to Pull Loose: 89000.00 lb
			<u>Total Volume: 50.95 bbl</u>	Tool Chased 0.00 ft
Drill Pipe Above KB:	10.00 ft			String Weight: Initial 60000.00 lb
Depth to Top Packer:	3726.00 ft			Final 62000.00 lb
Depth to Bottom Packer:	ft			
Interval between Packers:	35.00 ft			
Tool Length:	61.00 ft			
Number of Packers:	2	Diameter: 6.75 inches		

Tool Comments:

Tool Description	Length (ft)	Serial No.	Position	Depth (ft)	Accum. Lengths
------------------	-------------	------------	----------	------------	----------------

Shut In Tool	5.00			3705.00	
Hydraulic tool	5.00			3710.00	
Jars	5.00			3715.00	
Safety Joint	2.00			3717.00	
Packer	5.00			3722.00	26.00 Bottom Of Top Packer
Packer	4.00			3726.00	
Stubb	1.00			3727.00	
Recorder	0.00	8790	Inside	3727.00	
Recorder	0.00	8792	Outside	3727.00	
Perforations	31.00			3758.00	
Bullnose	3.00			3761.00	35.00 Bottom Packers & Anchor

Total Tool Length: 61.00



**TRILOBITE
TESTING, INC.**

DRILL STEM TEST REPORT

FLUID SUMMARY

Jones Oil LLC.

2-24s-14w Stafford,KS

112 N. Gray
St. John, KS 67576-1923

Brehm-Burke #2

Job Ticket: 50484

DST#: 2

ATTN: Jeff Burk

Test Start: 2013.04.30 @ 08:09:37

Mud and Cushion Information

Mud Type: Gel Chem

Cushion Type:

Oil API:

deg API

Mud Weight: 9.00 lb/gal

Cushion Length:

ft

Water Salinity:

8000 ppm

Viscosity: 52.00 sec/qt

Cushion Volume:

bbbl

Water Loss: 8.77 in³

Gas Cushion Type:

Resistivity: ohm.m

Gas Cushion Pressure:

psig

Salinity: 8000.00 ppm

Filter Cake: 0.02 inches

Recovery Information

Recovery Table

Length ft	Description	Volume bbl
120.00	SLI MWCGO 4%mud, 5%w tr, 16%gas, 75%o	0.590
275.00	SLI MCGO 5%mud, 10%gas, 85%oil	3.858

Total Length: 395.00 ft

Total Volume: 4.448 bbl

Num Fluid Samples: 1

Num Gas Bombs: 1

Serial #: RR-1

Laboratory Name: Caraway

Laboratory Location: Liberal, KS

Recovery Comments:



**TRILOBITE
TESTING, INC.**

DRILL STEM TEST REPORT

GAS RATES

Jones Oil LLC.

2-24s-14w Stafford,KS

112 N. Gray
St. John, KS 67576-1923

Brehm-Burke #2

Job Ticket: 50484

DST#: 2

ATTN: Jeff Burk

Test Start: 2013.04.30 @ 08:09:37

Gas Rates Information

Temperature: 59 (deg F)
Relative Density: 0.65
Z Factor: 0.8

Gas Rates Table

Flow Period	Elapsed Time	Choke (inches)	Pressure (psig)	Gas Rate (Mcf/d)
-	30	0.13	10.00	9.13
2	10	0.13	6.00	7.63
2	20	0.13	11.00	9.51
2	30	0.13	15.00	11.00
2	40	0.13	17.00	11.75
2	50	0.13	19.00	12.50
2	60	0.13	21.00	13.25

Serial #: 8790

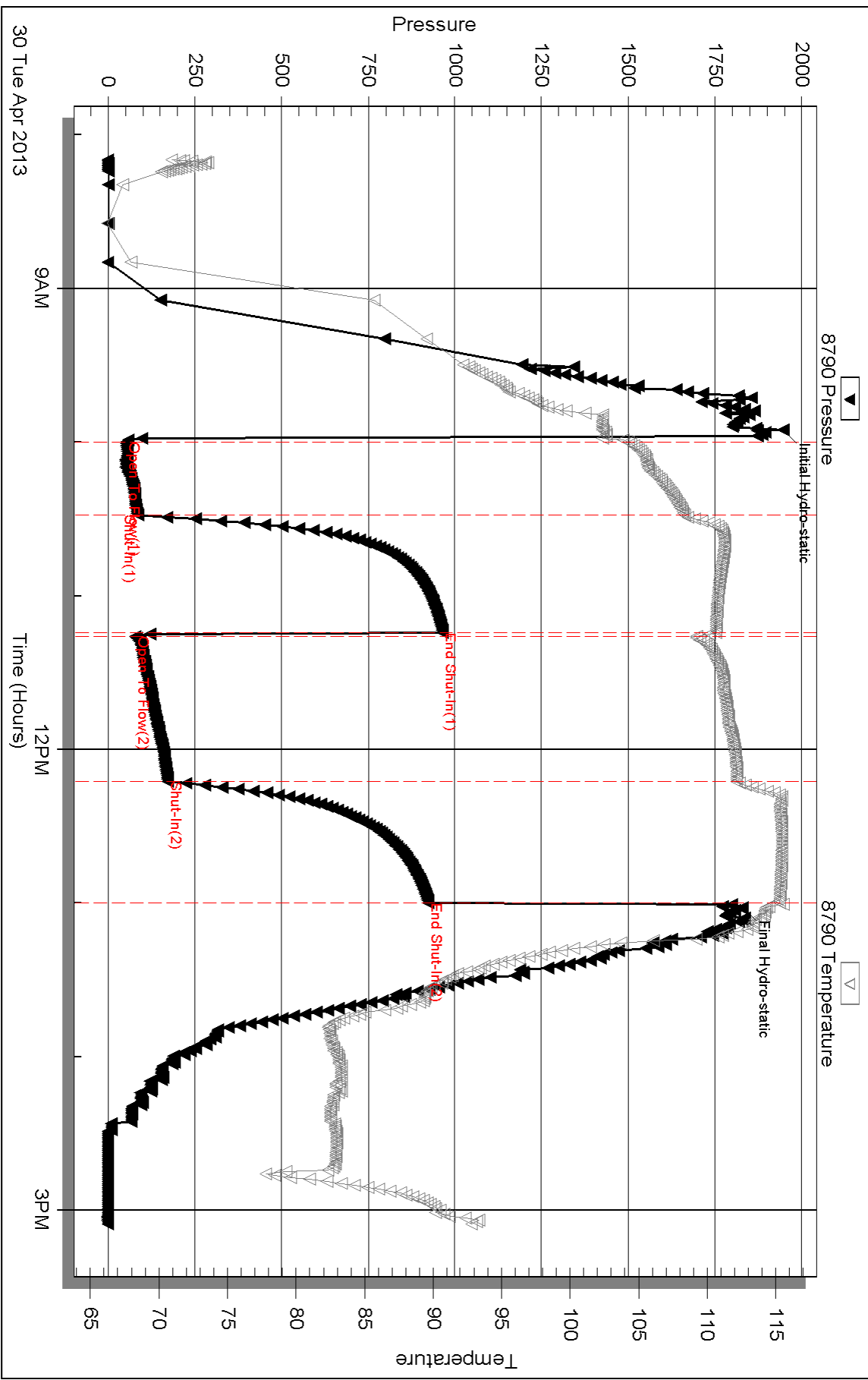
Inside

Jones Oil LLC.

Brehm-Burke #2

DST Test Number: 2

Pressure vs. Time



Triobite Testing, Inc

Ref. No: 50484

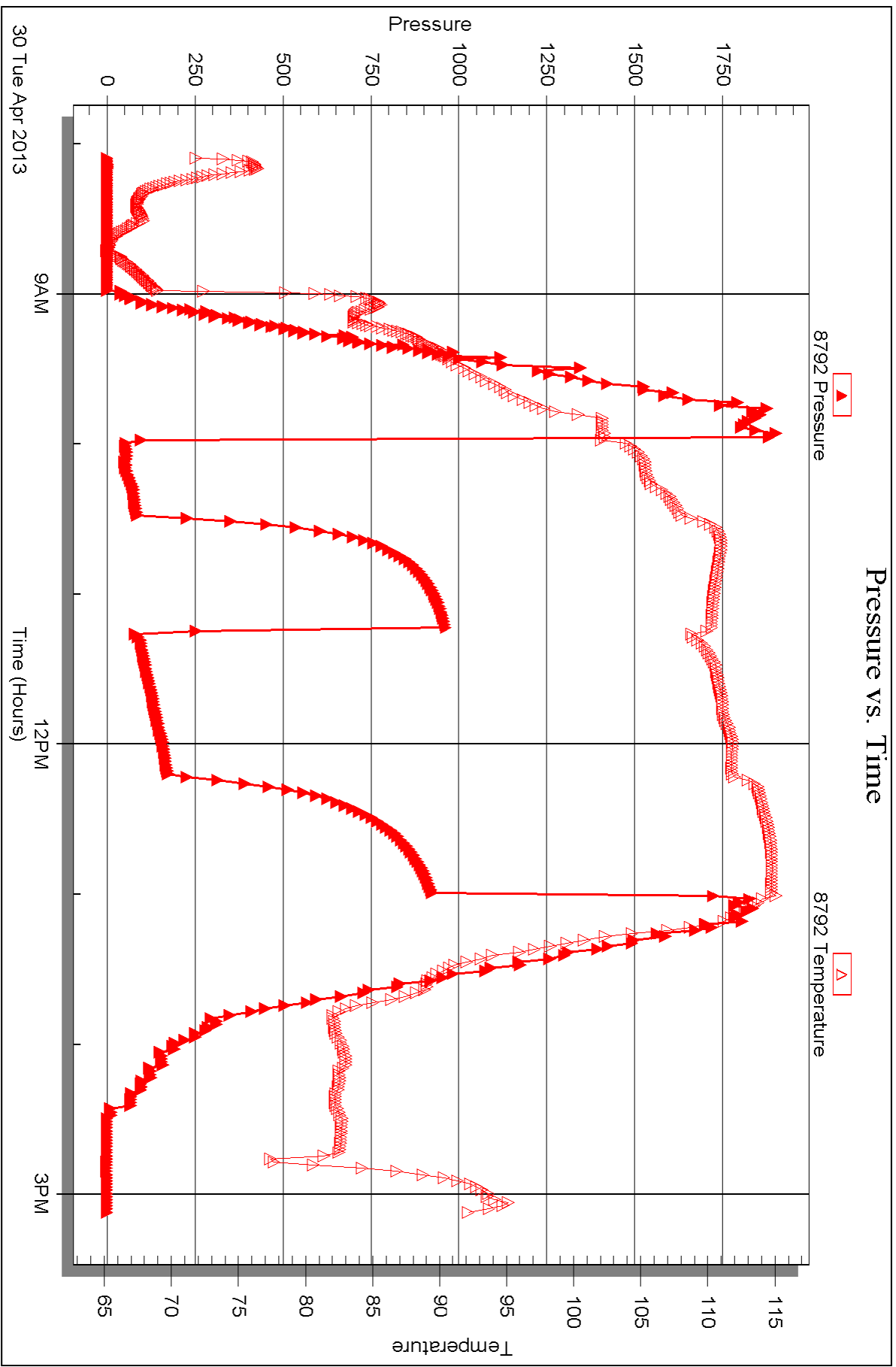
Printed: 2013.05.09 @ 11:26:07

Serial #: 8792

Outside Jones Oil LLC.

Brehm-Burke #2

DST Test Number: 2





DRILL STEM TEST REPORT

Prepared For: **Jones Oil LLC.**

112 N. Gray
St. John, KS 67576-1923

ATTN: Jeff Burk

Brehm-Burke #2

2-24s-14w Stafford,KS

Start Date: 2013.05.01 @ 00:04:04

End Date: 2013.05.01 @ 06:56:04

Job Ticket #: 50918 DST #: 3

Trilobite Testing, Inc
PO Box 362 Hays, KS 67601
ph: 785-625-4778 fax: 785-625-5620

Printed: 2013.05.09 @ 11:21:34



TRILOBITE TESTING, INC.

DRILL STEM TEST REPORT

Jones Oil LLC.

2-24s-14w Stafford, KS

112 N. Gray
St. John, KS 67576-1923

Brehm-Burke #2

Job Ticket: 50918

DST#: 3

ATTN: Jeff Burk

Test Start: 2013.05.01 @ 00:04:04

GENERAL INFORMATION:

Formation: **Lansing "J&K"**

Deviated: No Whipstock: ft (KB)

Time Tool Opened: 01:41:04

Time Test Ended: 06:56:04

Test Type: Conventional Bottom Hole (Reset)

Tester: Leal Cason

Unit No: 45

Interval: 3758.00 ft (KB) To 3812.00 ft (KB) (TVD)

Reference Elevations: 1947.00 ft (KB)

Total Depth: 3812.00 ft (KB) (TVD)

1942.00 ft (CF)

Hole Diameter: 7.88 inches Hole Condition: Good

KB to GR/CF: 5.00 ft

Serial #: 6798

Inside

Press @ Run Depth: 184.54 psig @ 3759.00 ft (KB)

Capacity: 8000.00 psig

Start Date: 2013.05.01

End Date:

2013.05.01

Last Calib.:

2013.05.01

Start Time: 00:04:05

End Time:

06:56:04

Time On Btm:

2013.05.01 @ 01:38:49

Time Off Btm:

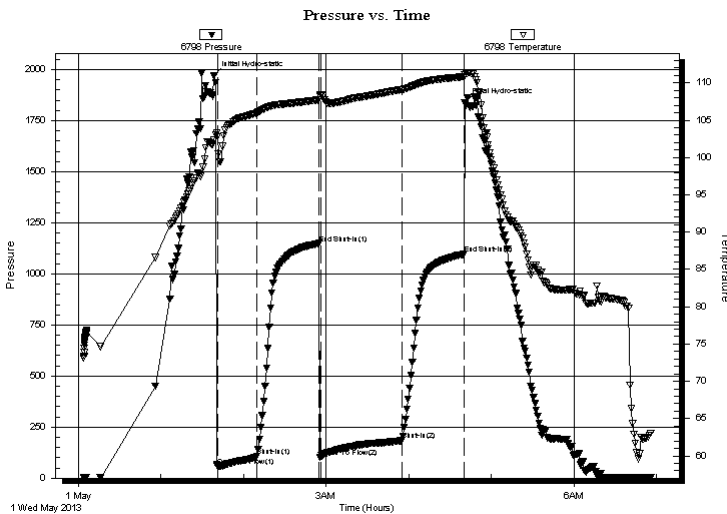
2013.05.01 @ 04:41:04

TEST COMMENT: IF: Strong Blow , BOB in 1 minute

IS: No Blow Back

FF: Strong Blow , BOB Immediate, GTS in 3 minutes, Took Sample, Gas w as TSTM

FS: 2 inch Blow Back



PRESSURE SUMMARY

Time (Min.)	Pressure (psig)	Temp (deg F)	Annotation
0	1969.94	102.40	Initial Hydro-static
3	56.19	102.81	Open To Flow (1)
32	105.36	105.98	Shut-In(1)
77	1149.00	107.73	End Shut-In(1)
78	100.62	108.37	Open To Flow (2)
137	184.54	109.08	Shut-In(2)
182	1096.27	110.82	End Shut-In(2)
183	1838.81	111.12	Final Hydro-static

Recovery

Length (ft)	Description	Volume (bbl)
0.00	3330 GIP	0.00
120.00	GSY MWCO 12%G 5%M 10%W 73%O	0.59
292.00	GSY WOCM 23%G 5%W 20% O 52%M	4.10

Gas Rates

	Choke (inches)	Pressure (psig)	Gas Rate (Mcf/d)

* Recovery from multiple tests



**TRILOBITE
TESTING, INC.**

DRILL STEM TEST REPORT

TOOL DIAGRAM

Jones Oil LLC.

2-24s-14w Stafford,KS

112 N. Gray
St. John, KS 67576-1923

Brehm-Burke #2

Job Ticket: 50918

DST#: 3

ATTN: Jeff Burk

Test Start: 2013.05.01 @ 00:04:04

Tool Information

Drill Pipe:	Length: 3622.00 ft	Diameter: 3.80 inches	Volume: 50.81 bbl	Tool Weight: 2100.00 lb
Heavy Wt. Pipe:	Length: 0.00 ft	Diameter: 0.00 inches	Volume: 0.00 bbl	Weight set on Packer: 25000.00 lb
Drill Collar:	Length: 120.00 ft	Diameter: 2.25 inches	Volume: 0.59 bbl	Weight to Pull Loose: 80000.00 lb
			<u>Total Volume: 51.40 bbl</u>	Tool Chased ft
Drill Pipe Above KB:	11.00 ft			String Weight: Initial 60000.00 lb
Depth to Top Packer:	3758.00 ft			Final 60000.00 lb
Depth to Bottom Packer:	ft			
Interval between Packers:	54.00 ft			
Tool Length:	81.00 ft			
Number of Packers:	2	Diameter: 6.75 inches		

Tool Comments:

Tool Description	Length (ft)	Serial No.	Position	Depth (ft)	Accum. Lengths
------------------	-------------	------------	----------	------------	----------------

Shut In Tool	5.00			3736.00	
Hydraulic tool	5.00			3741.00	
Jars	5.00			3746.00	
Safety Joint	2.00			3748.00	
Packer	5.00			3753.00	27.00 Bottom Of Top Packer
Packer	5.00			3758.00	
Stubb	1.00			3759.00	
Recorder	0.00	6798	Inside	3759.00	
Recorder	0.00	8367	Outside	3759.00	
Perforations	2.00			3761.00	
Change Over Sub	1.00			3762.00	
Drill Pipe	31.00			3793.00	
Change Over Sub	1.00			3794.00	
Perforations	15.00			3809.00	
Bullnose	3.00			3812.00	54.00 Bottom Packers & Anchor

Total Tool Length: 81.00



**TRILOBITE
TESTING, INC.**

DRILL STEM TEST REPORT

FLUID SUMMARY

Jones Oil LLC.

2-24s-14w Stafford,KS

112 N. Gray
St. John, KS 67576-1923

Brehm-Burke #2

Job Ticket: 50918

DST#: 3

ATTN: Jeff Burk

Test Start: 2013.05.01 @ 00:04:04

Mud and Cushion Information

Mud Type: Gel Chem

Cushion Type:

Oil API:

deg API

Mud Weight: 9.00 lb/gal

Cushion Length:

ft

Water Salinity:

ppm

Viscosity: 52.00 sec/qt

Cushion Volume:

bbbl

Water Loss: 8.78 in³

Gas Cushion Type:

Resistivity: ohm.m

Gas Cushion Pressure:

psig

Salinity: 8000.00 ppm

Filter Cake: 0.02 inches

Recovery Information

Recovery Table

Length ft	Description	Volume bbl
0.00	3330 GIP	0.000
120.00	GSY MWCO 12%G 5%M 10%W 73%O	0.590
292.00	GSY WOCM 23%G 5%W 20% O 52%M	4.096

Total Length: 412.00 ft Total Volume: 4.686 bbl

Num Fluid Samples: 0

Num Gas Bombs: 0

Serial #:

Laboratory Name:

Laboratory Location:

Recovery Comments:

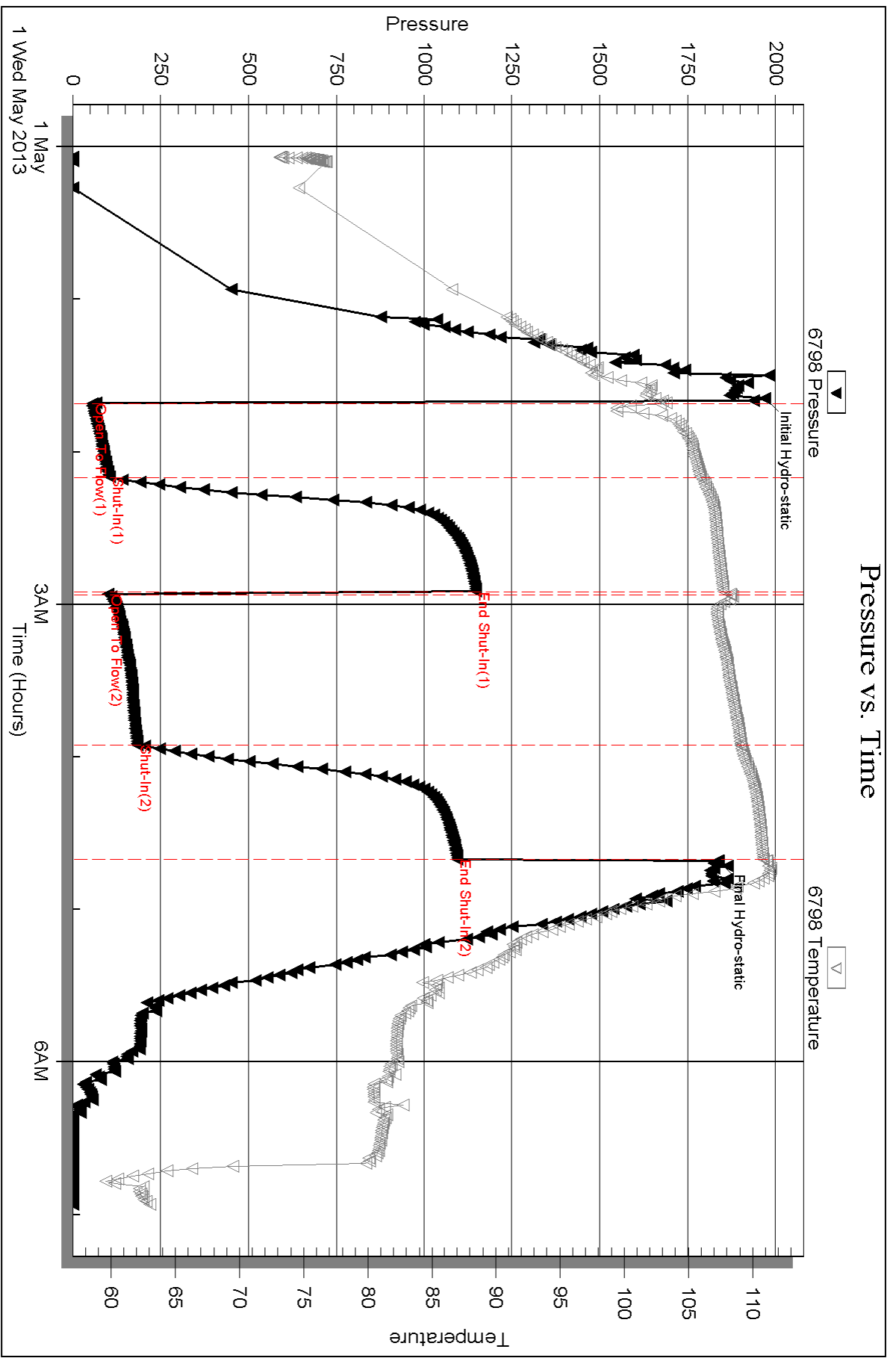
Serial #: 6798

Inside

Jones Oil LLC.

Brehm-Burke #2

DST Test Number: 3

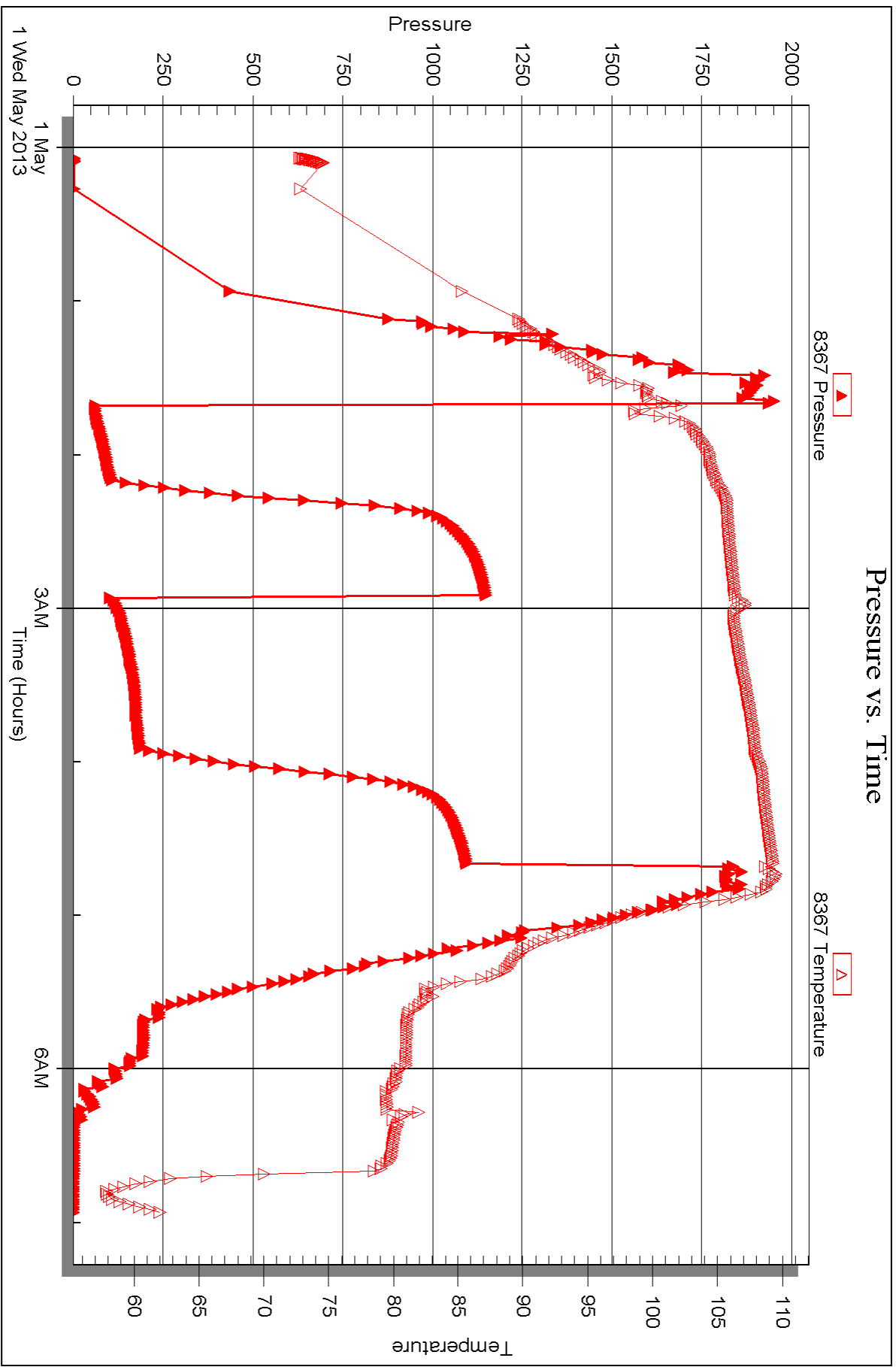


Serial #: 8367

Outside Jones Oil LLC.

Brehm-Burke #2

DST Test Number: 3





DRILL STEM TEST REPORT

Prepared For: **Jones Oil LLC.**

112 N. Gray
St. John, KS 67576-1923

ATTN: Jeff Burk

Brehm-Burke #2

2-24s-14w Stafford,KS

Start Date: 2013.05.01 @ 14:17:32

End Date: 2013.05.01 @ 21:08:47

Job Ticket #: 50919 DST #: 4

Trilobite Testing, Inc
PO Box 362 Hays, KS 67601
ph: 785-625-4778 fax: 785-625-5620

Printed: 2013.05.09 @ 11:20:49

Jones Oil LLC. 2-24s-14w Stafford,KS Brehm-Burke #2 DST # 4 Lansing "L" 2013.05.01



TRILOBITE TESTING, INC.

DRILL STEM TEST REPORT

Jones Oil LLC.

2-24s-14w Stafford, KS

112 N. Gray
St. John, KS 67576-1923

Brehm-Burke #2

Job Ticket: 50919

DST#: 4

ATTN: Jeff Burk

Test Start: 2013.05.01 @ 14:17:32

GENERAL INFORMATION:

Formation: **Lansing "L"**

Deviated: No Whipstock: ft (KB)

Time Tool Opened: 16:11:32

Time Test Ended: 21:08:47

Test Type: Conventional Bottom Hole (Reset)

Tester: Leal Cason

Unit No: 45

Interval: 3817.00 ft (KB) To 3847.00 ft (KB) (TVD)

Reference Elevations: 1947.00 ft (KB)

Total Depth: 3847.00 ft (KB) (TVD)

1942.00 ft (CF)

Hole Diameter: 7.88 inches Hole Condition: Good

KB to GR/CF: 5.00 ft

Serial #: 6798 Inside

Press @ Run Depth: 66.64 psig @ 3818.00 ft (KB)

Capacity: 8000.00 psig

Start Date: 2013.05.01 End Date: 2013.05.01

Last Calib.: 2013.05.01

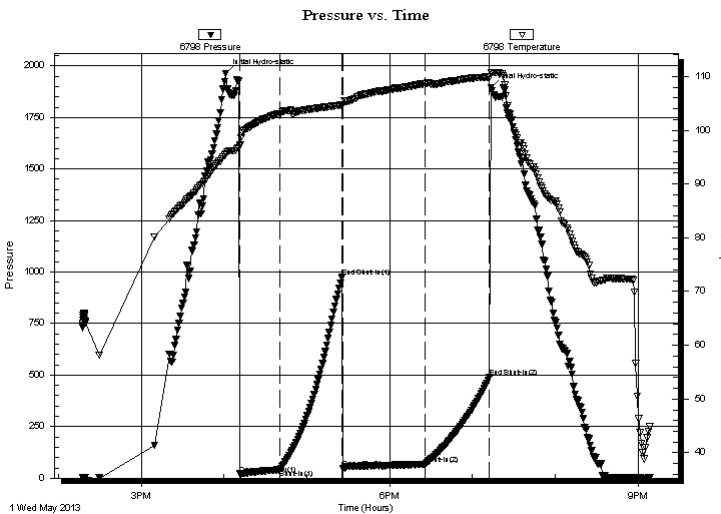
Start Time: 14:17:33 End Time: 21:08:47

Time On Btm: 2013.05.01 @ 16:01:17

Time Off Btm: 2013.05.01 @ 19:13:17

TEST COMMENT: IF: Fair Blow , BOB in 10 minutes
IS: No Blow Back
FF: Strong Blow , BOB in 10 seconds
FS: No Blow Back

PRESSURE SUMMARY



Time (Min.)	Pressure (psig)	Temp (deg F)	Annotation
0	1964.14	95.53	Initial Hydro-static
11	20.06	97.35	Open To Flow (1)
40	41.15	103.13	Shut-In(1)
85	977.08	104.67	End Shut-In(1)
85	47.20	104.71	Open To Flow (2)
145	66.64	108.66	Shut-In(2)
191	488.78	109.90	End Shut-In(2)
192	1894.32	110.60	Final Hydro-static

Recovery

Length (ft)	Description	Volume (bbl)
0.00	1105 GIP	0.00
120.00	GOCM 20%G 30%O 60%M	0.59
15.00	GSOCM 10%G 5%O 85%M	0.21

Gas Rates

	Choke (inches)	Pressure (psig)	Gas Rate (Mcf/d)

* Recovery from multiple tests



**TRILOBITE
TESTING, INC.**

DRILL STEM TEST REPORT

TOOL DIAGRAM

Jones Oil LLC.

2-24s-14w Stafford,KS

112 N. Gray
St. John, KS 67576-1923

Brehm-Burke #2

Job Ticket: 50919

DST#: 4

ATTN: Jeff Burk

Test Start: 2013.05.01 @ 14:17:32

Tool Information

Drill Pipe:	Length: 3685.00 ft	Diameter: 3.80 inches	Volume: 51.69 bbl	Tool Weight: 2100.00 lb
Heavy Wt. Pipe:	Length: 0.00 ft	Diameter: 0.00 inches	Volume: 0.00 bbl	Weight set on Packer: 25000.00 lb
Drill Collar:	Length: 120.00 ft	Diameter: 2.25 inches	Volume: 0.59 bbl	Weight to Pull Loose: 65000.00 lb
			<u>Total Volume: 52.28 bbl</u>	Tool Chased ft
Drill Pipe Above KB:	15.00 ft			String Weight: Initial 60000.00 lb
Depth to Top Packer:	3817.00 ft			Final 60000.00 lb
Depth to Bottom Packer:	ft			
Interval between Packers:	30.00 ft			
Tool Length:	57.00 ft			
Number of Packers:	2	Diameter: 6.75 inches		

Tool Comments:

Tool Description	Length (ft)	Serial No.	Position	Depth (ft)	Accum. Lengths
------------------	-------------	------------	----------	------------	----------------

Shut In Tool	5.00			3795.00	
Hydraulic tool	5.00			3800.00	
Jars	5.00			3805.00	
Safety Joint	2.00			3807.00	
Packer	5.00			3812.00	27.00 Bottom Of Top Packer
Packer	5.00			3817.00	
Stubb	1.00			3818.00	
Recorder	0.00	6798	Inside	3818.00	
Recorder	0.00	8367	Outside	3818.00	
Perforations	26.00			3844.00	
Bullnose	3.00			3847.00	30.00 Bottom Packers & Anchor

Total Tool Length: 57.00



**TRILOBITE
TESTING, INC.**

DRILL STEM TEST REPORT

FLUID SUMMARY

Jones Oil LLC.

2-24s-14w Stafford,KS

112 N. Gray
St. John, KS 67576-1923

Brehm-Burke #2

Job Ticket: 50919

DST#: 4

ATTN: Jeff Burk

Test Start: 2013.05.01 @ 14:17:32

Mud and Cushion Information

Mud Type: Gel Chem

Cushion Type:

Oil API:

deg API

Mud Weight: 9.00 lb/gal

Cushion Length:

ft

Water Salinity:

ppm

Viscosity: 50.00 sec/qt

Cushion Volume:

bbbl

Water Loss: 10.78 in³

Gas Cushion Type:

Resistivity: ohm.m

Gas Cushion Pressure:

psig

Salinity: 10000.00 ppm

Filter Cake: 0.02 inches

Recovery Information

Recovery Table

Length ft	Description	Volume bbl
0.00	1105 GIP	0.000
120.00	GOCM 20%G 30%O 60%M	0.590
15.00	GSOCM 10%G 5%O 85%M	0.210

Total Length: 135.00 ft

Total Volume: 0.800 bbl

Num Fluid Samples: 0

Num Gas Bombs: 0

Serial #:

Laboratory Name:

Laboratory Location:

Recovery Comments:

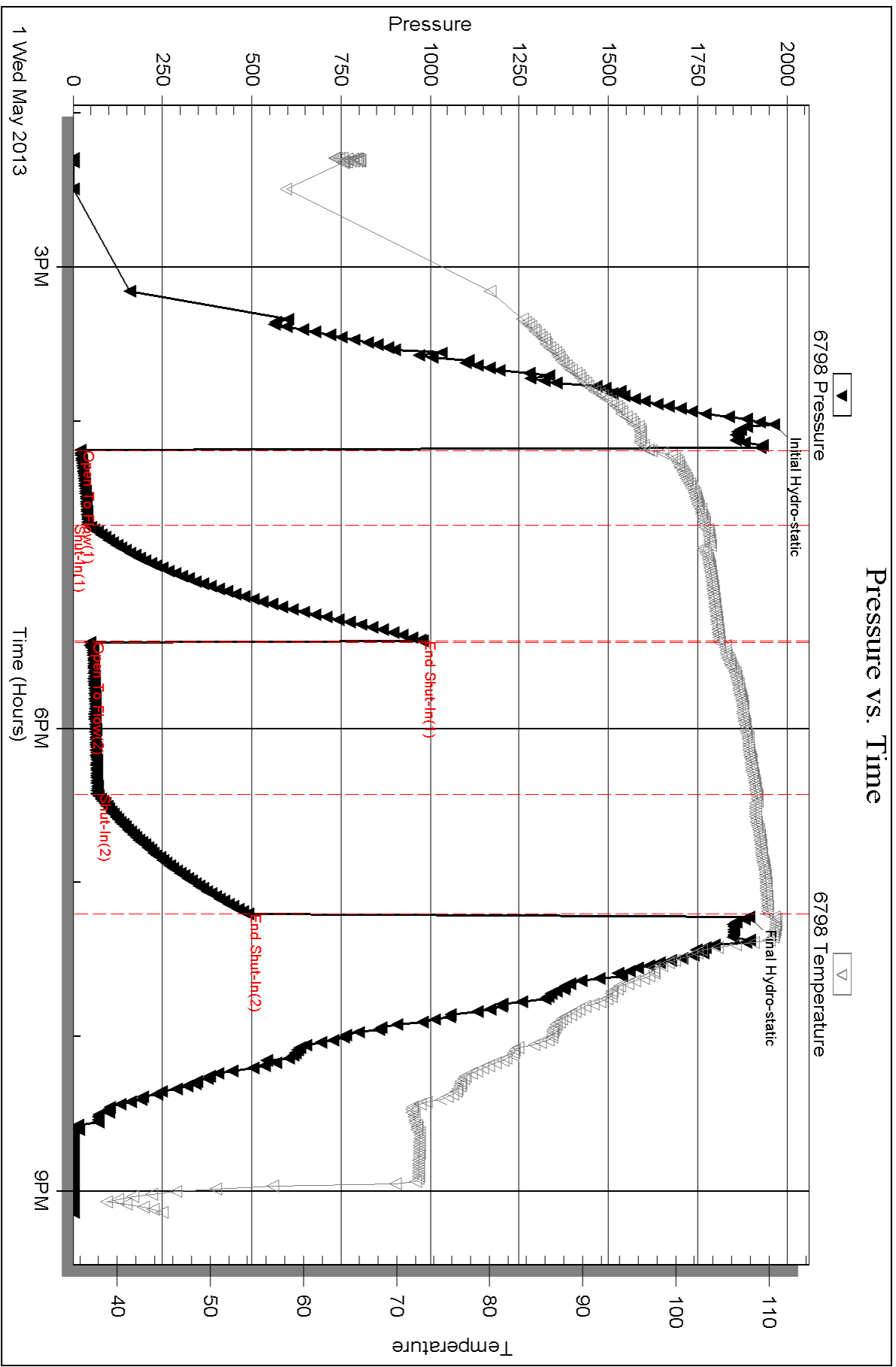
Serial #: 6798

Inside

Jones Oil LLC.

Brehm-Burke #2

DST Test Number: 4

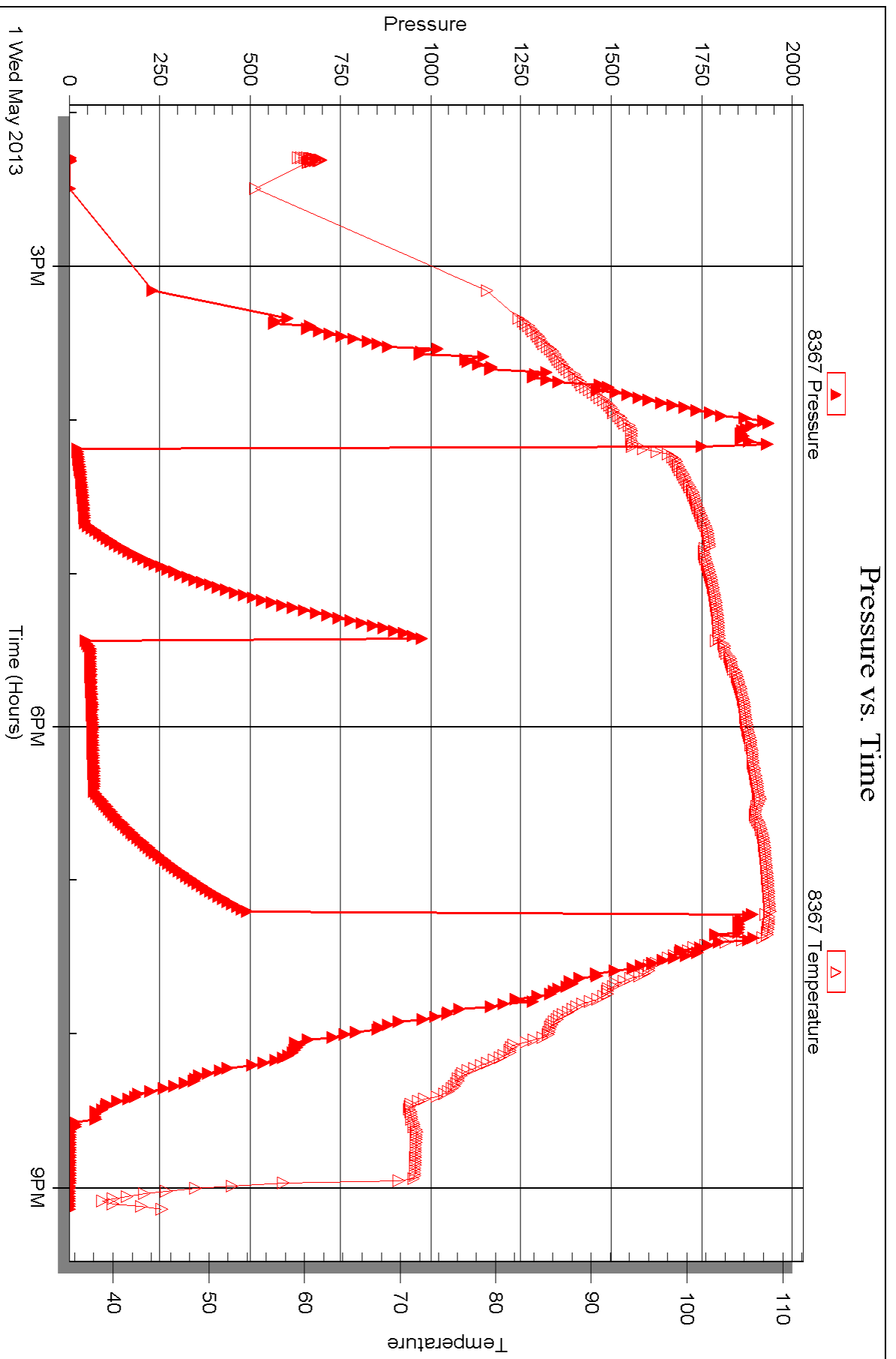


Serial #: 8367

Outside Jones Oil LLC.

Brehm-Burke #2

DST Test Number: 4





DRILL STEM TEST REPORT

Prepared For: **Jones Oil LLC.**

112 N. Gray
St. John, KS 67576-1923

ATTN: Jeff Burk

Brehm-Burke #2

2-24s-14w Stafford,KS

Start Date: 2013.05.02 @ 11:47:52

End Date: 2013.05.02 @ 19:38:37

Job Ticket #: 50920 DST #: 5

Trilobite Testing, Inc
PO Box 362 Hays, KS 67601
ph: 785-625-4778 fax: 785-625-5620

Printed: 2013.05.09 @ 11:19:19



TRILOBITE TESTING, INC.

DRILL STEM TEST REPORT

Jones Oil LLC.

2-24s-14w Stafford, KS

112 N. Gray
St. John, KS 67576-1923

Brehm-Burke #2

Job Ticket: 50920

DST#: 5

ATTN: Jeff Burk

Test Start: 2013.05.02 @ 11:47:52

GENERAL INFORMATION:

Formation: **Mississippi**

Deviated: No Whipstock: ft (KB)

Time Tool Opened: 13:55:37

Time Test Ended: 19:38:37

Test Type: Conventional Bottom Hole (Reset)

Tester: Leal Cason

Unit No: 45

Interval: 3940.00 ft (KB) To 4005.00 ft (KB) (TVD)

Reference Elevations: 1947.00 ft (KB)

Total Depth: 4005.00 ft (KB) (TVD)

1942.00 ft (CF)

Hole Diameter: 7.88 inches Hole Condition: Good

KB to GR/CF: 5.00 ft

Serial #: 8367 Outside

Press @ Run Depth: 242.33 psig @ 3941.00 ft (KB)

Capacity: 8000.00 psig

Start Date: 2013.05.02

End Date: 2013.05.02

Last Calib.: 2013.05.02

Start Time: 11:47:53

End Time: 19:38:37

Time On Btm: 2013.05.02 @ 13:48:37

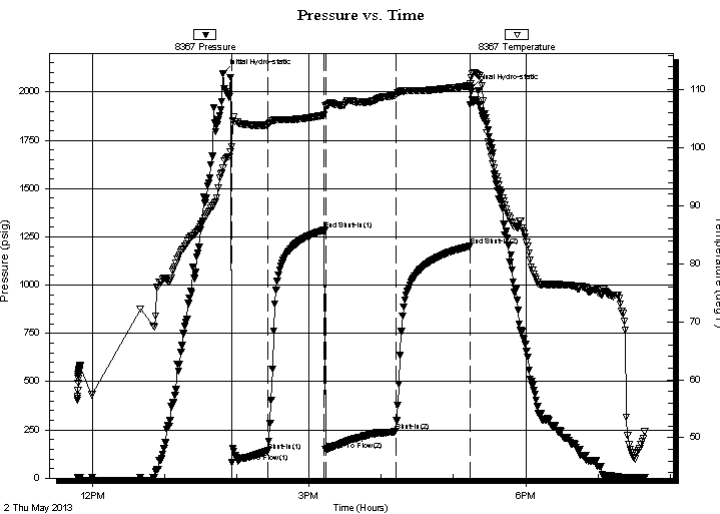
Time Off Btm: 2013.05.02 @ 17:14:07

TEST COMMENT: IF: Strong Blow, BOB in 2 minutes, GTS in 23 minutes, Caught Sample, TSTM

IS: 1/2 inch Blow Back

FF: Strong Blow, BOB in 30 seconds, GTS immediate, TSTM

FS: 4 inch Blow Back



PRESSURE SUMMARY

Time (Min.)	Pressure (psig)	Temp (deg F)	Annotation
0	2096.87	96.60	Initial Hydro-static
7	80.34	100.16	Open To Flow (1)
38	141.39	103.97	Shut-In(1)
84	1284.33	105.63	End Shut-In(1)
86	147.04	107.27	Open To Flow (2)
144	242.33	109.03	Shut-In(2)
205	1201.33	110.71	End Shut-In(2)
206	2019.72	111.08	Final Hydro-static

Recovery

Length (ft)	Description	Volume (bbl)
0.00	3333 GIP	0.00
120.00	GOCM 30%G 5%O 65%M	0.59
376.00	GSY OCM 30%G 30%O 40%M	5.27
102.00	Oil	1.43

Gas Rates

	Choke (inches)	Pressure (psig)	Gas Rate (Mcf/d)

* Recovery from multiple tests



**TRILOBITE
TESTING, INC.**

DRILL STEM TEST REPORT

TOOL DIAGRAM

Jones Oil LLC.

2-24s-14w Stafford,KS

112 N. Gray
St. John, KS 67576-1923

Brehm-Burke #2

Job Ticket: 50920

DST#: 5

ATTN: Jeff Burk

Test Start: 2013.05.02 @ 11:47:52

Tool Information

Drill Pipe:	Length: 3811.00 ft	Diameter: 3.80 inches	Volume: 53.46 bbl	Tool Weight: 2100.00 lb
Heavy Wt. Pipe:	Length: 0.00 ft	Diameter: 0.00 inches	Volume: 0.00 bbl	Weight set on Packer: 25000.00 lb
Drill Collar:	Length: 120.00 ft	Diameter: 2.25 inches	Volume: 0.59 bbl	Weight to Pull Loose: 65000.00 lb
			<u>Total Volume: 54.05 bbl</u>	Tool Chased ft
Drill Pipe Above KB:	18.00 ft			String Weight: Initial 60000.00 lb
Depth to Top Packer:	3940.00 ft			Final 61000.00 lb
Depth to Bottom Packer:	ft			
Interval between Packers:	65.00 ft			
Tool Length:	92.00 ft			
Number of Packers:	2	Diameter: 6.75 inches		

Tool Comments:

Tool Description	Length (ft)	Serial No.	Position	Depth (ft)	Accum. Lengths
------------------	-------------	------------	----------	------------	----------------

Shut In Tool	5.00			3918.00	
Hydraulic tool	5.00			3923.00	
Jars	5.00			3928.00	
Safety Joint	2.00			3930.00	
Packer	5.00			3935.00	27.00 Bottom Of Top Packer
Packer	5.00			3940.00	
Stubb	1.00			3941.00	
Recorder	0.00	6798	Inside	3941.00	
Recorder	0.00	8367	Outside	3941.00	
Perforations	4.00			3945.00	
Change Over Sub	1.00			3946.00	
Drill Pipe	31.00			3977.00	
Change Over Sub	1.00			3978.00	
Perforations	24.00			4002.00	
Bullnose	3.00			4005.00	65.00 Bottom Packers & Anchor

Total Tool Length: 92.00



**TRILOBITE
TESTING, INC.**

DRILL STEM TEST REPORT

FLUID SUMMARY

Jones Oil LLC.

2-24s-14w Stafford,KS

112 N. Gray
St. John, KS 67576-1923

Brehm-Burke #2

Job Ticket: 50920

DST#: 5

ATTN: Jeff Burk

Test Start: 2013.05.02 @ 11:47:52

Mud and Cushion Information

Mud Type: Gel Chem

Cushion Type:

Oil API:

39.3 deg API

Mud Weight: 9.00 lb/gal

Cushion Length:

ft

Water Salinity:

ppm

Viscosity: 52.00 sec/qt

Cushion Volume:

bbbl

Water Loss: 9.19 in³

Gas Cushion Type:

Resistivity: ohm.m

Gas Cushion Pressure:

psig

Salinity: 8000.00 ppm

Filter Cake: 0.02 inches

Recovery Information

Recovery Table

Length ft	Description	Volume bbbl
0.00	3333 GIP	0.000
120.00	GOCM 30%G 5%O 65%M	0.590
376.00	GSY OCM 30%G 30%O 40%M	5.274
102.00	Oil	1.431

Total Length: 598.00 ft Total Volume: 7.295 bbl

Num Fluid Samples: 0

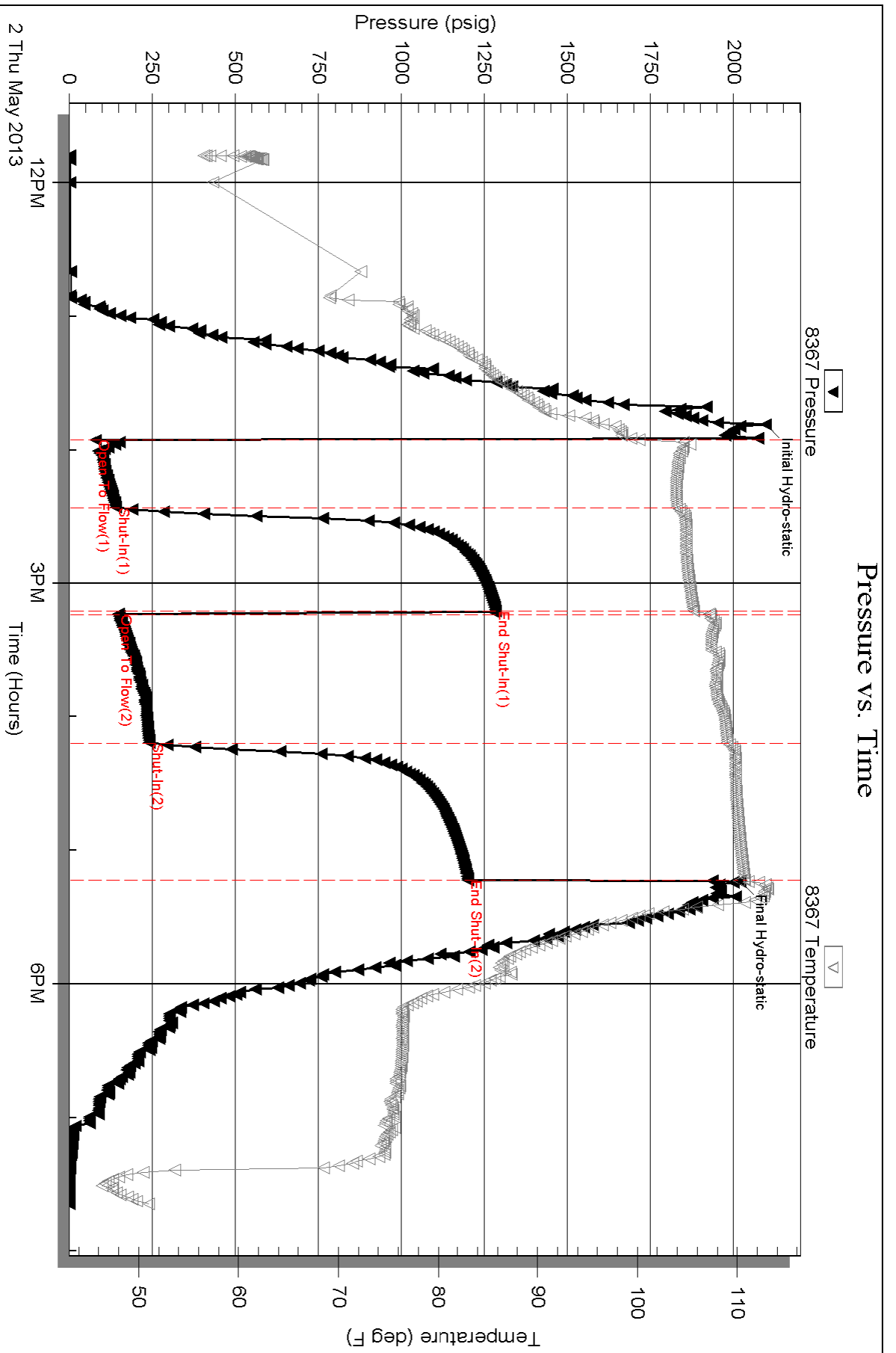
Num Gas Bombs: 0

Serial #:

Laboratory Name:

Laboratory Location:

Recovery Comments: Gravity w as 38.8 @ 55 degrees





TRILOBITE TESTING INC.

1515 Commerce Parkway • Hays, Kansas 67601

Test Ticket

NO. 50483

Well Name & No. Brehm - Burke #2 Test No. 1 Date 4-29-13
 Company Jones Oil, LLC Elevation 1947 KB 1942 GL
 Address 112 N. Gray St. John, KS 67576-1923
 Co. Rep / Geo. Jeff Burke Rig Petromark #2
 Location: Sec. 2 Twp. 24s. Rge. 14w. Co. Stafford State KS

Interval Tested 3672 - 3686 Zone Tested Lansing "F"
 Anchor Length 14 Drill Pipe Run 3558 Mud Wt. 9.0
 Top Packer Depth 3667 Drill Collars Run 120 Vis 52
 Bottom Packer Depth 3672 Wt. Pipe Run Ø WL 8.8
 Total Depth 3686 Chlorides 8000 ppm System LCM 1 #

Blow Description IF: Strong blow. BOB @ 6 1/2 min. No GTS.
ISI: Weak surf. blow
FF: Strong blow. BOB @ 2 min. No GTS.
FSI: Weak surf. - 1/2" blow.

Rec	Feet of	%gas	%oil	%water	%mud
<u>105</u>	<u>GOWCM</u>	<u>15</u>	<u>18</u>	<u>27</u>	<u>40</u>
<u>120</u>	<u>GOCW</u>	<u>4</u>	<u>6</u>	<u>90</u>	
<u>2695</u>	<u>GIP</u>	<u>100</u>			

Rec Total 2920 BHT 114 Gravity N/L API RW 09 @ 77 °F Chlorides 78000 ppm

(A) Initial Hydrostatic 1863 Test 1150 T-On Location 1345
 (B) First Initial Flow 18 Jars 250 T-Started 1553
 (C) First Final Flow 60 Safety Joint 75 T-Open 1746
 (D) Initial Shut-In 980 Circ Sub _____ T-Pulled 2046
 (E) Second Initial Flow 54 Hourly Standby _____ T-Out 2236
 (F) Second Final Flow 105 Mileage 50 77.50
 (G) Final Shut-In 934 Sampler _____
 (H) Final Hydrostatic 1804 Straddle _____
 Shale Packer _____
 Extra Packer _____
 Extra Recorder _____
 Day Standby _____
 Accessibility _____

Ruined Shale Packer _____
 Ruined Packer _____
 Extra Copies _____
 Sub Total 0
 Total 1552.50
 MP/DST Disc't _____

Initial Open 30
 Initial Shut-In 45
 Final Flow 60
 Final Shut-In 45
 Sub Total 1552.50
 Approved By [Signature] Our Representative Ryan Reynolds
 Trilobite Testing Inc. shall not be liable for damaged of any kind of the property or personnel of the one for whom a test is made, or for any loss suffered or sustained, directly or indirectly, through the use of its equipment, or its statements or opinion concerning the results of any test, tools lost or damaged in the hole shall be paid for at cost by the party for whom the test is made.



TRILOBITE TESTING INC.

1515 Commerce Parkway • Hays, Kansas 67601

Test Ticket

NO. 50484

Well Name & No. Brehm - Burke #2 Test No. 2 Date 4-30-13
 Company Jones Oil, LLC. Elevation 1947 KB 1942 GL
 Address 112 N. Gray St. John, KS 67576-1923
 Co. Rep / Geo. Jeff Burke/Keaton Jones Rig Petromark #2
 Location: Sec. 2 Twp. 24s. Rge. 14w. Co. Stafford State KS

Interval Tested 3726-3761 Zone Tested Lansing
 Anchor Length 35' Drill Pipe Run 3590 Mud Wt. 9.0
 Top Packer Depth 3721 Drill Collars Run 120 Vis 52
 Bottom Packer Depth 3726 Wt. Pipe Run 0 WL 8.8
 Total Depth 3761 Chlorides 8000 ppm System LCM 1#

Blow Description IF: Strong blow, BOB immed. GTS @ 26 min.
IST: Weak blow, surf. - 3/4"
FF: Strong blow, BOB immed. Gugged gas throughout
FSI: Strong blow, BOB @ 2 min. after bleed-off.

Rec	Feet of	%gas	%oil	%water	%mud
<u>275</u>	<u>SLI MCGO</u>	<u>10</u>	<u>85</u>	<u>5</u>	<u>5</u>
<u>120</u>	<u>SLI MWCGO</u>	<u>16</u>	<u>75</u>	<u>5</u>	<u>4</u>
<u> </u>	<u>(Not enough wtr. f/BW)</u>	<u> </u>	<u> </u>	<u> </u>	<u> </u>
<u> </u>	<u> </u>	<u> </u>	<u> </u>	<u> </u>	<u> </u>
<u> </u>	<u> </u>	<u> </u>	<u> </u>	<u> </u>	<u> </u>

Rec Total 395 BHT 115 Gravity 39 API RW n/c @ n/c °F Chlorides 8000 ppm

(A) Initial Hydrostatic 1946 Test 1150 T-On Location 0745
 (B) First Initial Flow 52 Jars 250 T-Started 0810
 (C) First Final Flow 85 Safety Joint 75 T-Open 1000
 (D) Initial Shut-In 963 * Circ Sub _____ T-Pulled 1258
 (E) Second Initial Flow 78 Hourly Standby _____ T-Out 1505

(F) Second Final Flow 172 Mileage 50 77.50
 (G) Final Shut-In 922 * Sampler _____
 (H) Final Hydrostatic 1830 Straddle _____

Shale Packer _____ Ruined Shale Packer _____
 Extra Packer _____ Ruined Packer _____
 Extra Recorder _____ Extra Copies _____

Initial Open 30 Day Standby _____ Sub Total 0
 Initial Shut-In 45 Accessibility _____ Total 1552.50
 Final Flow 60 Sub Total 1552.50 MP/DST Disc't _____
 Final Shut-In 45

Approved By [Signature] Our Representative Ryan Reynolds

Trilobite Testing Inc. shall not be liable for damaged or any kind of the property or personnel of the one for whom a test is made, or for any loss suffered or sustained, directly or indirectly, through the use of its equipment, or its statements or opinion concerning the results of any test, tools lost or damaged in the hole shall be paid for at cost by the party for whom the test is made.



TRILOBITE TESTING INC.

1515 Commerce Parkway • Hays, Kansas 67601

Test Ticket

NO. 50918

4/10

Well Name & No. ~~Jones~~ ~~Oil Co~~ Brehm - Burke 2 Test No. 3 Date 04/30/13
 Company Jones Oil Co Elevation 1947 KB 1942 GL
 Address 112 N. Gray St John, KS 67576
 Co. Rep / Geo. Jeff Burke Rig Petromark 2
 Location: Sec. 2 Twp. 24 S Rge. 14 W Co. Stafford State KS

Interval Tested 3758 - 3812 Zone Tested Lansing "J+k"
 Anchor Length 54 Drill Pipe Run 3622 Mud Wt. 9.0
 Top Packer Depth 3753 Drill Collars Run 120 Vis 52
 Bottom Packer Depth 3758 Wt. Pipe Run 0 WL 8.8
 Total Depth 3812 Chlorides 8000 ppm System LCM

Blow Description IF: Strong Blow, BOB in 1 minute
ISF: NO Blow Back

FF: Strong Blow, BOB immediate, GTS in 3 minutes, took sample, Gas was TSTM

FSI: 2 inch Blow Back

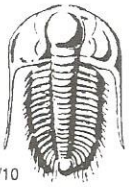
Rec	Feet of	%gas	%oil	%water	%mud
<u>3330</u>	<u>GIP</u>				
<u>292</u>	<u>GSY WOCM</u>	<u>23</u>	<u>20</u>	<u>5</u>	<u>52</u>
<u>120</u>	<u>GSY MWCO</u>	<u>12</u>	<u>73</u>	<u>10</u>	<u>5</u>
Rec	Feet of	%gas	%oil	%water	%mud
Rec	Feet of	%gas	%oil	%water	%mud

Rec Total 412 BHT 110 Gravity NIC API RW NIC @ NIC °F Chlorides NIC ppm

(A) Initial Hydrostatic 1970 Test 1150 T-On Location 21:30
 (B) First Initial Flow 56 Jars 250 T-Started 00:04
 (C) First Final Flow 105 Safety Joint 75 T-Open 01:41
 (D) Initial Shut-In 1149 Circ Sub _____ T-Pulled 04:40
 (E) Second Initial Flow 101 Hourly Standby _____ T-Out 06:56
 (F) Second Final Flow 185 Mileage (50) 77.50 Comments _____
 (G) Final Shut-In 1096 Sampler _____
 (H) Final Hydrostatic 1839 Straddle _____
 Ruined Shale Packer _____
 Ruined Packer _____
 Extra Copies _____
 Initial Open 30 Shale Packer _____
 Initial Shut-In 45 Extra Packer _____
 Final Flow 60 Extra Recorder _____ Sub Total 0
 Final Shut-In 45 Day Standby _____ Total 1552.50
 Accessibility _____ MP/DST Disc't _____
 Sub Total 1552.50

Approved By [Signature] Our Representative [Signature]

TriLOBITE TESTING INC. shall not be liable for damaged of any kind of the property or personnel of the one for whom a test is made, or for any loss suffered or sustained, directly or indirectly, through the use of its equipment, or its statements or opinion concerning the results of any test, tools lost or damaged in the hole shall be paid for at cost by the party for whom the test is made.



TRILOBITE TESTING INC.

1515 Commerce Parkway • Hays, Kansas 67601

Test Ticket

NO. 50919

Well Name & No. Brehm - Burke 2 Test No. 4 Date 05/01/13
 Company Jones Oil LLC Elevation 1947 KB 1942 GL
 Address 112 N. Gray St. John, KS 67576
 Co. Rep / Geo. Jeff Burke Rig Petro mark 2
 Location: Sec. 2 Twp. 24S Rge. 14W Co. Stafford State KS

Interval Tested 3817 - 3847 Zone Tested Lansing "L"
 Anchor Length 30 Drill Pipe Run 3685 Mud Wt. 8.9
 Top Packer Depth 3812 Drill Collars Run 120 Vis 50
 Bottom Packer Depth 3817 Wt. Pipe Run 0 WL 10.8
 Total Depth 3847 Chlorides 10,000 ppm System LCM 1

Blow Description IF: Fair Blow, BOB in 10 minutes
ISI: NO Blow Back

FF: Strong Blow, BOB in 10 seconds

FSI: NO Blow Back

Rec	Feet of	%gas	%oil	%water	%mud
<u>1105</u>	<u>GIP</u>				
<u>15</u>	<u>G50CM</u>	<u>10</u>	<u>5</u>	<u>85</u>	
<u>120</u>	<u>G0CM</u>	<u>20</u>	<u>30</u>	<u>50</u>	
Rec	Feet of	%gas	%oil	%water	%mud
Rec	Feet of	%gas	%oil	%water	%mud

Rec Total 135 BHT 110 Gravity N/C API RW N/C @ N/C F Chlorides N/C ppm

(A) Initial Hydrostatic 1964 Test 1150 T-On Location 13:30
 (B) First Initial Flow 20 Jars 250 T-Started 14:17
 (C) First Final Flow 41 Safety Joint 75 T-Open 16:11
 (D) Initial Shut-In 977 Circ Sub T-Pulled 19:12
 (E) Second Initial Flow 47 Hourly Standby T-Out 21:08
 (F) Second Final Flow 67 Mileage 50 77.50 Comments _____
 (G) Final Shut-In 489 Sampler _____
 (H) Final Hydrostatic 1894 Straddle _____
 Shale Packer _____
 Ruined Shale Packer _____
 Ruined Packer _____
 Extra Copies _____

Initial Open 30
 Initial Shut-In 45
 Final Flow 60
 Final Shut-In 45
 Sub Total 0
 Total 1552.50
 Sub Total 1552.50
 MP/DST Disc't _____

Approved By [Signature] Our Representative [Signature]

TriLOBITE Testing Inc. shall not be liable for damaged of any kind of the property or personnel of the one for whom a test is made, or for any loss suffered or sustained, directly or indirectly, through the use of its equipment, or its statements or opinion concerning the results of any test, tools lost or damaged in the hole shall be paid for at cost by the party for whom the test is made.



TRILOBITE TESTING INC.

1515 Commerce Parkway • Hays, Kansas 67601

Test Ticket

NO. 50920

Well Name & No. Brohm - Burke 2 Test No. 5 Date 05/02/13
 Company Jones Oil Co Elevation 1947 KB 1942 GL
 Address 112 N. Gray St. John, KS 67576
 Co. Rep / Geo. Jeff Burk Rig Petromark 2
 Location: Sec. 2 Twp. 24S Rge. 14W Co. Stafford State KS

Interval Tested 3940 - 4005 Zone Tested Mississippi
 Anchor Length 65 Drill Pipe Run 3811 Mud Wt. 9.0
 Top Packer Depth 3935 Drill Collars Run 120 Vis 52
 Bottom Packer Depth 3940 Wt. Pipe Run 0 WL 9.2
 Total Depth 4005 Chlorides 8000 ppm System LCM 1/2

Blow Description IF: strong Blow, BOB in 2 minutes, GTS in 23 minutes, caught sample, TSTM
IST: 1/2 inch Blow Back

FF: strong Blow, BOB in 30 seconds, GTS immediate, TSTM

FST: 4 inch Blow Back

Rec	Feet of	%gas	%oil	%water	%mud
<u>3333</u>	<u>Feet of GRP</u>				
<u>102</u>	<u>Feet of oil</u>				
<u>376</u>	<u>Feet of GSY OCM</u>	<u>30</u>	<u>30</u>	<u>40</u>	<u>0</u>
<u>120</u>	<u>Feet of GOCM</u>	<u>30</u>	<u>5</u>	<u>65</u>	<u>0</u>
Rec	Feet of	%gas	%oil	%water	%mud

Rec Total 598 BHT 110 Gravity 39.3 API RW NIC @ NIC °F Chlorides NIC ppm

(A) Initial Hydrostatic	<u>2097</u>
(B) First Initial Flow	<u>80</u>
(C) First Final Flow	<u>141</u>
(D) Initial Shut-In	<u>1248</u>
(E) Second Initial Flow	<u>147</u>
(F) Second Final Flow	<u>242</u>
(G) Final Shut-In	<u>1201</u>
(H) Final Hydrostatic	<u>2020</u>

- Test 1250
 - Jars 250
 - Safety Joint 75
 - Circ Sub
 - Hourly Standby
 - Mileage (50) 77.50
 - Sampler
 - Straddle
 - Shale Packer
 - Extra Packer
 - Extra Recorder
 - Day Standby
 - Accessibility
- Sub Total 1552.50

T-On Location 11:15
 T-Started 11:47
 T-Open 13:55
 T-Pulled 17:13
 T-Out 19:38
 Comments _____
 Ruined Shale Packer
 Ruined Packer
 Extra Copies
 Sub Total 0
 Total 1552.50
 MP/DST Disc't _____

Initial Open 30
 Initial Shut-In 45
 Final Flow 60
 Final Shut-In 60

Approved By [Signature]

Our Representative [Signature]

Trilobite Testing Inc. shall not be liable for damaged or any kind of the property or personnel of the one for whom a test is made, or for any loss suffered or sustained, directly or indirectly, through the use of its equipment, or its statements or opinion concerning the results of any test, tools lost or damaged in the hole shall be paid for at cost by the party for whom the test is made.