

MCELVAIN ENERGY, INC.
 SCHLEGEL LEASE
 IN SECTION 9, T11S, R22W
 TREGO COUNTY, KANSAS

(Set Nothing)
 Bottom Hole Location
 330'FNL 1980'FWL

Y = 290171 X = 1497859

N. 1/4 Cor., Sec. 9
 Y = 290482
 X = 1498516

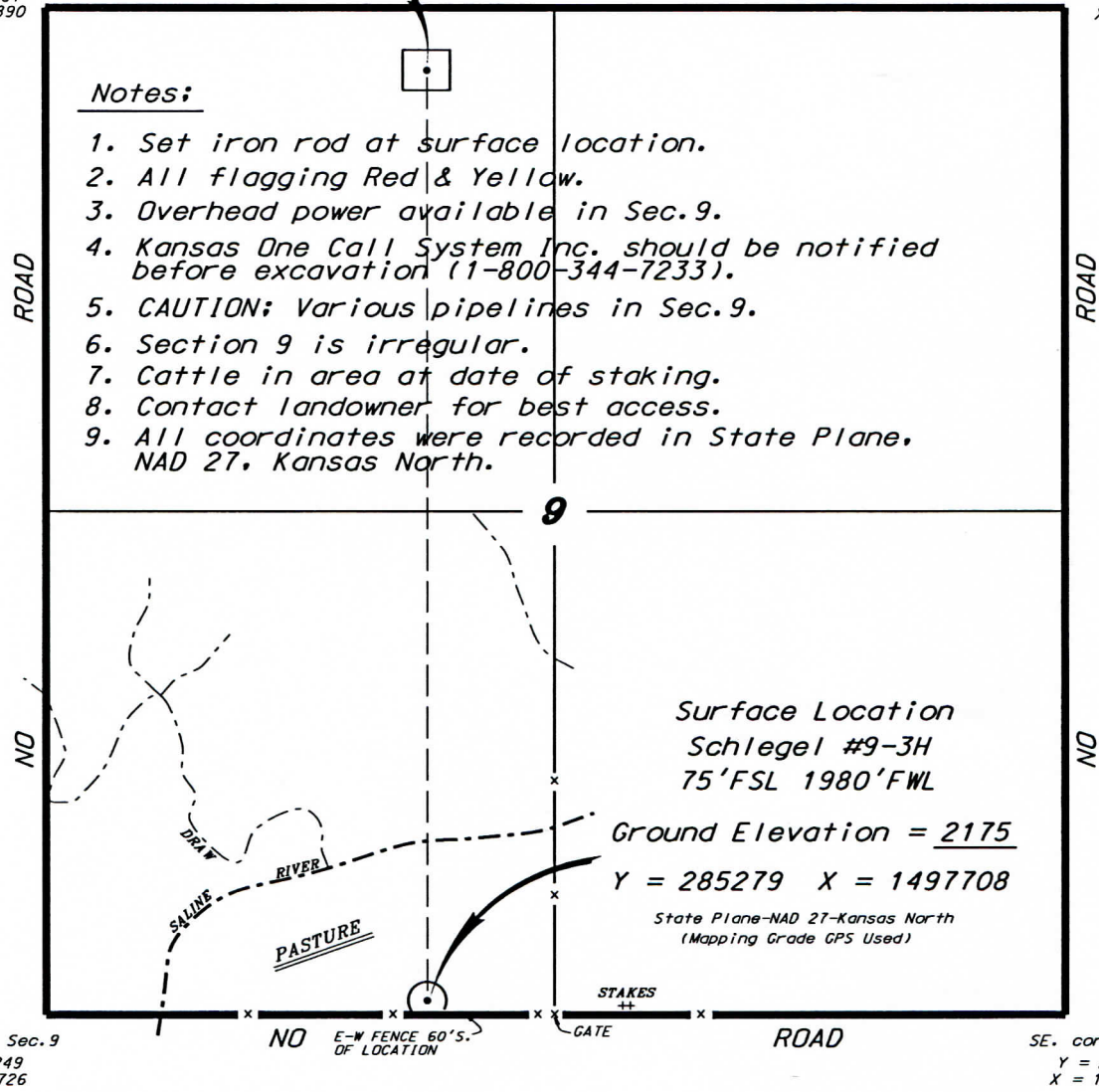
NW. corner Sec. 9
 Y = 290561
 X = 1495890

NE. corner Sec. 9
 Y = 290405
 X = 1501145

Notes:

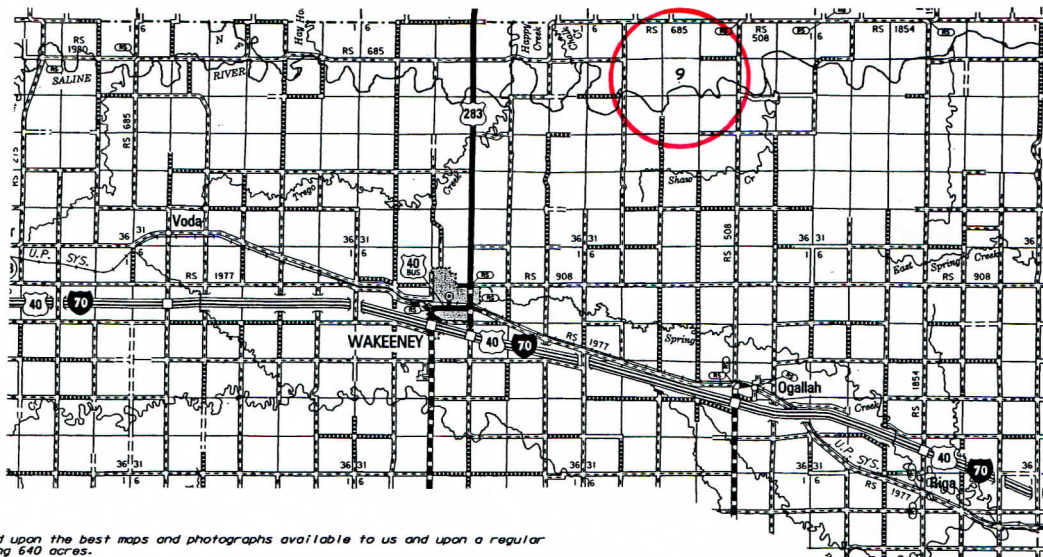
1. Set iron rod at surface location.
2. All flagging Red & Yellow.
3. Overhead power available in Sec. 9.
4. Kansas One Call System Inc. should be notified before excavation (1-800-344-7233).
5. CAUTION; Various pipelines in Sec. 9.
6. Section 9 is irregular.
7. Cattle in area at date of staking.
8. Contact landowner for best access.
9. All coordinates were recorded in State Plane, NAD 27, Kansas North.

*Ingress and egress to location as shown on this plat is per usage only and may not be legally opened for public use. Contact landowner, tenant and county road department for access.



SW. corner Sec. 9
 Y = 285249
 X = 1495726

SE. corner Sec. 9
 Y = 285130
 X = 1500944



*Controlling data is based upon the best maps and photographs available to us and upon a regular section of land containing 640 acres.

*Approximate section lines were determined using the normal standard of care of oilfield surveyors practicing in the state of Kansas. The section corners, which establish the precise section lines, were not necessarily located, and the exact location of the drillsite location in the section is not guaranteed. Therefore, the operator securing this service and accepting this plat and all other parties relying thereon agree to hold Central Kansas Oilfield Services, Inc., its officers and employees harmless from all losses, costs and expenses and said entities released from any liability from incidental or consequential damages.

*Elevations derived from National Geodetic Vertical Datum.

Date August 1, 2013

SCALE 1" = 1000'

