

White Exploration, Inc.

Chain Ranch 'D' #1-X

Scale 1:240 (5"=100') Imperial
Measured Depth Log

Well Name: Chain Ranch 'D' #1-X
Location: Section 7-T31S-R11W
License Number: API 15-007-24020-00
Spud Date: 5/4/2013
Surface Coordinates: 430' FNL & 1,400' FWL

Region: Barber Co., KS
Drilling Completed: 5/10/2013

Bottom Hole Coordinates: 430' FNL & 1,400' FWL
Ground Elevation (ft): 1,644' K.B. Elevation (ft): 1,654'
Logged Interval (ft): 3,500' To: 4,525' Total Depth (ft): 4,525'
Formation: Simpson
Type of Drilling Fluid: Chemical

Printed by WellSight Log Viewer from WellSight Systems 1-800-447-1534 www.WellSight.com

OPERATOR

Company: White Exploration, Inc
Address: 1635 N. Waterfront Parkway
Suite 100
Wichita, KS 67206

GEOLOGIST

Name: Thomas M. Williams
Company: Petroleum Geologist
Address: Wichita, KS

CORE

Contractor:
Core #:
Formation:
Core Interval: From: Cut:
 To: Recovered:
Bit type:
Size:
Coring Time:

Formation Tops

	Sample Top	E-Log Top
Oread Lime	3509 (-1855)	3502 (-1848)
Heebner Shale	3588 (-1934)	3585 (-1931)
Toronto Lime	3596 (-1942)	3602 (-1948)
Douglas Shale	3622 (-1968)	3617 (-1963)
Douglas Sand	3655 (-2001)	3652 (-1998)
Brown Lime	3787 (-2133)	3786 (-2132)
Stark Shale	4148 (-2494)	4148 (-2494)
Hushpuckney Shale	4188 (-2534)	4186 (-2532)
Mississippian Chert	4343 (-2689)	4343 (-2689)
Kinderhook Shale	4413 (-2759)	4414 (-2760)

DSTs

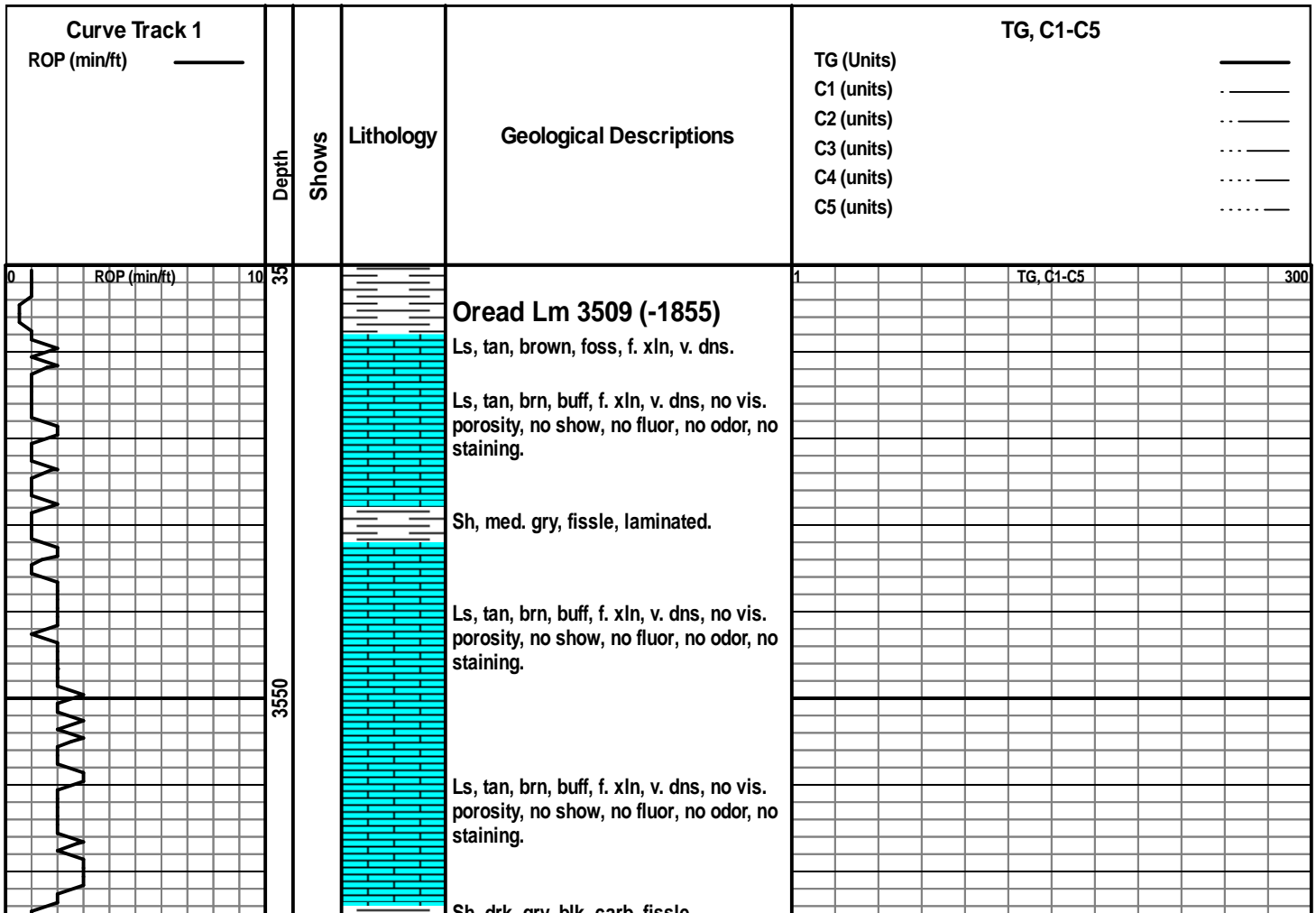
None

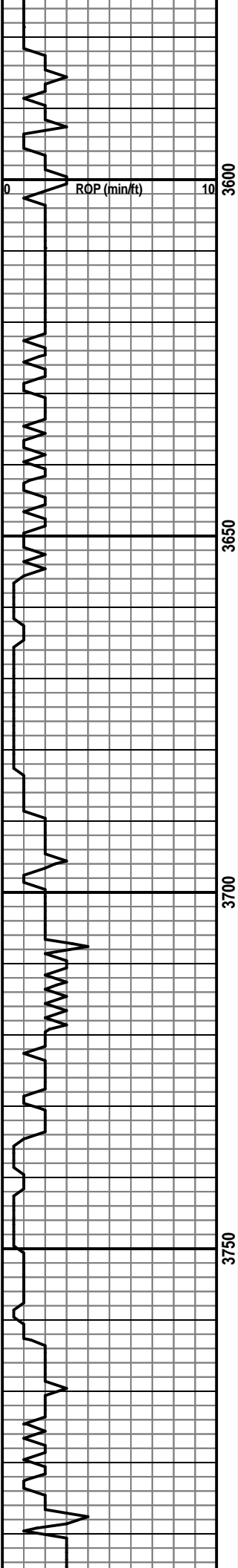
Comments

Due to the high porosity in the Mississippi Chert, and electric log calculations, it was decided to further test the Chain Ranch 'D' #1-X through production casing.

ROCK TYPES

 Anhy	 Carb.sh	 Lmst	 Shcol
 Bent	 Congl	 Meta	 Shgy
 Brec	 Dol	 Mrlst	 Sltst
 Cht	 Gyp	 Salt	 Ss
 Clyst	 Igne	 Shale	 Till





Sh, drk. gry, blk, carb, fissle.

Sh, black, carb, bleeding abdt. gas.
Ls, tan, brown, foss, f. xln, v. dns.

Heebner Sh 3588 (-1934)
Sh, black, carb, bleeding abdt. gas.
Ls, tan, brown, foss, f. xln, v. dns.

Sh, lt. to med. gry, fissle, laminated
Toronto Lm 3596 (-1942)
Ls, crm. wh, buff, f-m xln, foss, p-f dev.
int. xln. & vug. porosity, no shows,
chalky fluor, no staining.

Ls, crm. wh, buff, f-m xln, foss, p-f dev.
int. xln. & vug. porosity, no shows,
chalky fluor, no staining.

Douglas Sh 3622 (-1968)
Sh, lt. to med. gry, micaceous, fissle,
laminated.

Sh, lt. gry, fissle, silty, laminated.

Sh, lt. to med. gry, micaceous, fissle,
laminated.

Douglas Sd 3655 (-2001)
SS, lt. gry, f-m gr, sub-ang, fair sort,
micaceous, laminated, fair dev. int. gr.
porosity, no show, no fluor, no odor, no
staining.

SS, lt. gry, f-m gr, sub-ang, fair sort,
micaceous, laminated, fair dev. int. gr.
porosity, no show, no fluor, no odor, no
staining.

Sh, lt. gry, fissle, silty, laminated.

Sh, lt. to med. gry, micaceous, fissle,
laminated.

Sh, lt. gry, fissle, silty, laminated.

Sh, lt. to med. gry, micaceous, fissle,
laminated.

Sh, lt. gry, fissle, silty, laminated.

SS, lt. gry, f-m gr, sub-ang, fair sort,
micaceous, laminated, fair dev. int. gr.
porosity, no show, no fluor, no odor, no
staining.

SS, lt. gry, f-m gr, sub-ang, fair sort,
micaceous, laminated, fair dev. int. gr.
porosity, no show, no fluor, no odor, no
staining.

Sh, lt. to med. gry, micaceous, fissle,
laminated.

Sh, lt. gry, fissle, laminated.

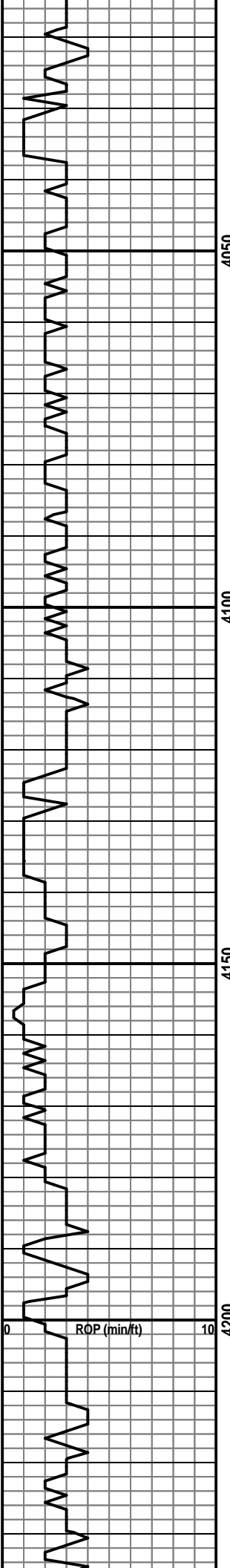
Brown Lm 3787 (-2133)
Ls, tan, brn, f. xln, micritic, foss, no
vis. por., no show, no fluor.

Ls, buff tan, f-m xln, dns, foss, w/

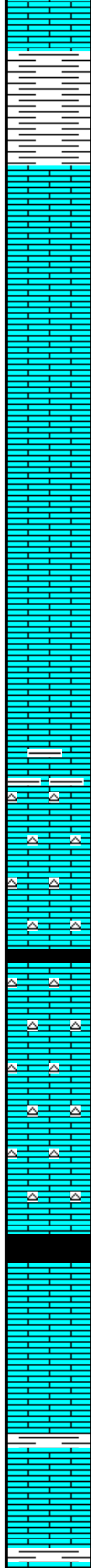
1 TG, C1-C5 300

Vis. 49
Wt. 8.9

Vis. 51
Wt. 9.0



4050
4100
4150
4200



p-f dev. int. xln. porosity, no show, no fluor, no odor, no stn.

Sh, lt. to med. gry, silty, fissle.

Sh, lt. to med. gry, silty, fissle.

Ls, buff, crm. wh, f. xln. to micritic, v. dns, p. dev. to no vis. porosity, no show, no fluor, no odor, no stn.

Ls, buff, tan, f-m xln, brittle, well dev. vug. porosity, no shows, no fluor, no odor, no staining.

Ls, buff, tan, f-m xln, w/ c. xln. sparite, p-f dev. int. xln. porosity, no show, no fluor, no odor, no stn.

Ls, buff, tan, f-m xln, w/ c. xln. sparite, granular to sucrosic, p. dev. int. xln. porosity, no show, no fluor, no odor, no stn.

Ls, buff, tan, f-m xln, w/ c. xln. sparite, granular to sucrosic, p. dev. int. xln. porosity, no show, no fluor, no odor, no stn.

Ls, gry, f. xln, v. dns, arg., shaley, no vis. porosity, no shw, no fluor.

Ls, tan buff, m. xln, brittle, fair to well dev. vugular porosity, no show, no fluor, no odor, no stain, w/ fresh wh. chert, chalky.

Stark Sh 4148 (-2494)
Sh, black, carb, bleeding abdt. gas.

Ls, tan buff, m. xln, brittle, fair to well dev. int. xln. & vug. porosity, no show, no fluor, sli. odor, no stain, w/ fresh wh. & tan chert.

Ls, tan buff, m. xln, dns, p-f dev. int. xln. & vug. porosity, no show, no fluor, sli. odor, no stain, w/ fresh wh. & tan chert.

Hush Sh 4188 (-2534)
Sh, black, carb, bleeding abdt. gas.

Ls, tan, f-m xln, brittle, v. foss, fair to well dev. int. foss. & int. xln. porosity, no show, no fluor, no odor, no staining.

Ls, buff, tan, f. xln, v. dns, p. dev. to no vis. porosity, no shw, no fluor, sli. odor, no staining

Sh, med. gry, calcareous, fissle.

Ls, buff, tan, f. xln, v. dns, p. dev. to no vis. porosity, no shw, no fluor, sli. odor, no staining

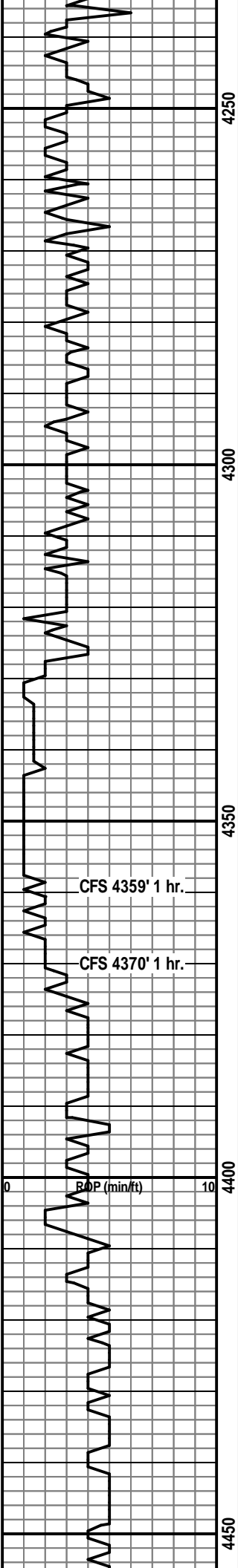
Sh, med. gry, calcareous, fissle.

Vis. 52
Wt. 9.2

Mud-Co report
@ 4103'
Wt. 9.4+
Vis. 66
PH 10.0
W.L. 10.8
Chl. 8,000
LCM 0#

TG, C1-C5

Vis. 46
Wt. 9.3



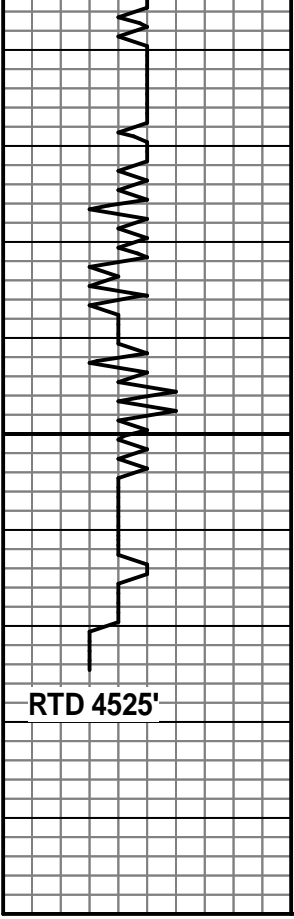
Ls, tan, lt. gry, v. foss, f. xln, v. dns, no vis. porosity, no shows, no fluor, no odor, no staining.
 Sh, drk. gry. to blk. carbonaceous.
 Ls, tan, f. xln. to micritic, v. dns, no vis. porosity, no show, no fluor. no odor, no staining, w/ abdt. sh.
 Sh, med. gry, calcareous, fissle.
 Ls, tan, f. xln. to micritic, v. dns, no vis. porosity, no show, no fluor. no odor, no staining, w/ abdt. sh.
 Ls, tan, f. xln. to micritic, v. dns, no vis. porosity, no show, no fluor. no odor, no staining, w/ abdt. sh.
 Sh, med. gry, calcareous, fissle.
 Ls, tan, f. xln. to micritic, v. dns, no vis. porosity, no show, no fluor. no odor, no staining, w/ abdt. sh.
 Sh, drk. gry. to blk. carbonaceous.
 Ls, tan, f. xln, micritic, v. dns.
 Cgl., Ls & Sh, red-brn, abdt. pyrite.
 Sh & siltstone, red-brn, brittle.
 Sh & siltstone, red, non-fissle.
Mississippian 4343 (-2689)
 Cht, wh, fresh to weathered, fair to well dev. vug. & int. gr. porosity, no shows, no fluor, no odor, no staining.
 Cht, wh, fresh to weathered, fair to well dev. vug. & int. gr. porosity, no shows, no fluor, no odor, no staining, w/ some pyrite.
 Cht, wh, green, fresh to wea., fair dev. int. gr. & vug. porosity, no shw, no fluor, no odor, no staining.
 Cht, wh, green, fresh to wea., fair dev. int. gr. & vug. porosity, no shw, no fluor, no odor, no staining.
 Cht, wh, green, fresh to wea., fair dev. int. gr. & vug. porosity, no shw, no fluor, no odor, no staining.
 Sh, wh, fresh to wea., no shows.
 Ls, buff, tan, lt. gry, f. xln, v. dns.
Kinderhook Sh 4413(-2759)
 Sh, lt. to med. gry, lt. gry-grn, dns, silty in part, fissle, laminated.
 Sh, lt. to med. gry, gry-grn, fissle blades, tr. pyrite.
 Sh, lt. to med. gry, silty, micaceous.
 Sh, lt. to med. gry, lt. gry-grn, dns, silty in part, fissle, laminated.

Vis. 45
Wt. 9.5

Vis. 47
Wt. 9.5

Vis. 48
Wt. 9.6

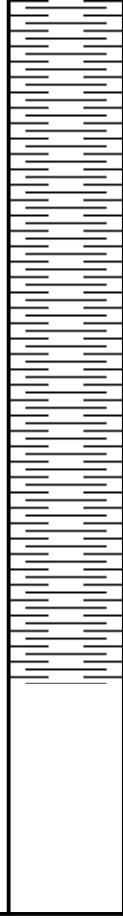
TG, C1-C5 300



4500

50

RTD 4525'



Sh, lt. to med. gry, gry-grn, fissle blades, tr. pyrite.

Sh, lt. to med. gry, silty, micaceous.

Sh, lt. gry, fissle to non-fissle.

Sh, lt. to med. gry, silty, laminated.

Sh, lt. to med. gry, silty, micaceous.

Sh, lt. to med. gry, silty, fissle.

Sh, med. gry, blocky, fissle blades.

Mud-Co report @
4493'
Wt. 9.7
Vis. 47
PH 9.0
W.L. 13.4
Chl. 6,000
LCM 0#

Strap .48 long
Survey 1.25 deg.