

MUD LOG
WellSight Systems
Scale 1:240 (5"=100') Imperial
Measured Depth Log

Well Name: DURBAN #7
Location: SECTION 3-TWP 31S-10E
License Number: 15-049-22580
Spud Date: 10/1/13
Surface Coordinates: 1870'FEL 2310' FSL
Region: ELK CO, KANSAS
Drilling Completed: 8/16/13

Bottom Hole
Coordinates:
Ground Elevation (ft): 1062
Logged Interval (ft): 1500 To: RTD
Formation: MISSISSIPPIAN
Type of Drilling Fluid: MUD/CHEM
K.B. Elevation (ft): 1069
Total Depth (ft):

Printed by MUD.LOG from WellSight Systems 1-800-447-1534 www.WellSight.com

OPERATOR

Company: LONE WOLF OIL COMPANY
Address: BOX 241
MOLINE, KANSAS 67353
KLN 31119

GEOLOGIST

Name: JOE BAKER
Company:
Address: 401 E. DOUGLAS STE 525
WICHITA KANSAS 67002

DSTs

FORMATION SAMPLE LOG

PAWNEE	1903(-714)	
FT SCOTT	1950(-761)	
CHEROKEE	1986(-797)	
MISS LM	2261(-1072)	
MISS POROSITY	2269(-1080)	
RTD	2355(-1166)	

Comments

Based on structure and sample shows casing was set to produce the Mississippian Lime

ROCK TYPES

Anhy	Clyst	Gyp	Mrlst	Shgy
Bent	Coal	Igne	Salt	Sltst
Brec	Congl	Lmst	Shale	Ss
Cht	Dol	Meta	Shcol	Till

ACCESSORIES

MINERAL	Gyp	FOSSIL	Ostra	Sltstrg
Anhy	Hvymin	Algae	Pelec	Ssstrg
Arggrn	Kaol	Amph	Pellet	TEXTURE
Arg	Marl	Belm	Pisolite	Boundst
Bent	Minxl	Bioclst	Plant	Chalky
Bit	Nodule	Brach	Strom	Cryxln
Brecfrag	Phos	Bryozoa	STRINGER	Earthy
Calc	Pyr	Cephal	Anhy	Finexln
Carb	Salt	Coral	Arg	Grainst
Chtdk	Sandy	Crin	Bent	Lithogr
Chtlt	Silt	Echin	Coal	Microxln
Dol	Sil	Fish	Dol	Mudst
Feldspar	Sulphur	Foram	Gyp	Packst
Ferrpel	Tuff	Fossil	Ls	Wackest
Ferr		Gastro	Mrlst	
Glau		Oolite		

OTHER SYMBOLS

- POROSITY**
 [E] Earthy
 [□] Fenest
 [F] Fracture
 [X] Inter
 [∩] Moldic
 [○] Organic
 [P] Pinpoint

[V] Vuggy

- SORTING**
 [W] Well
 [M] Moderate
 [P] Poor

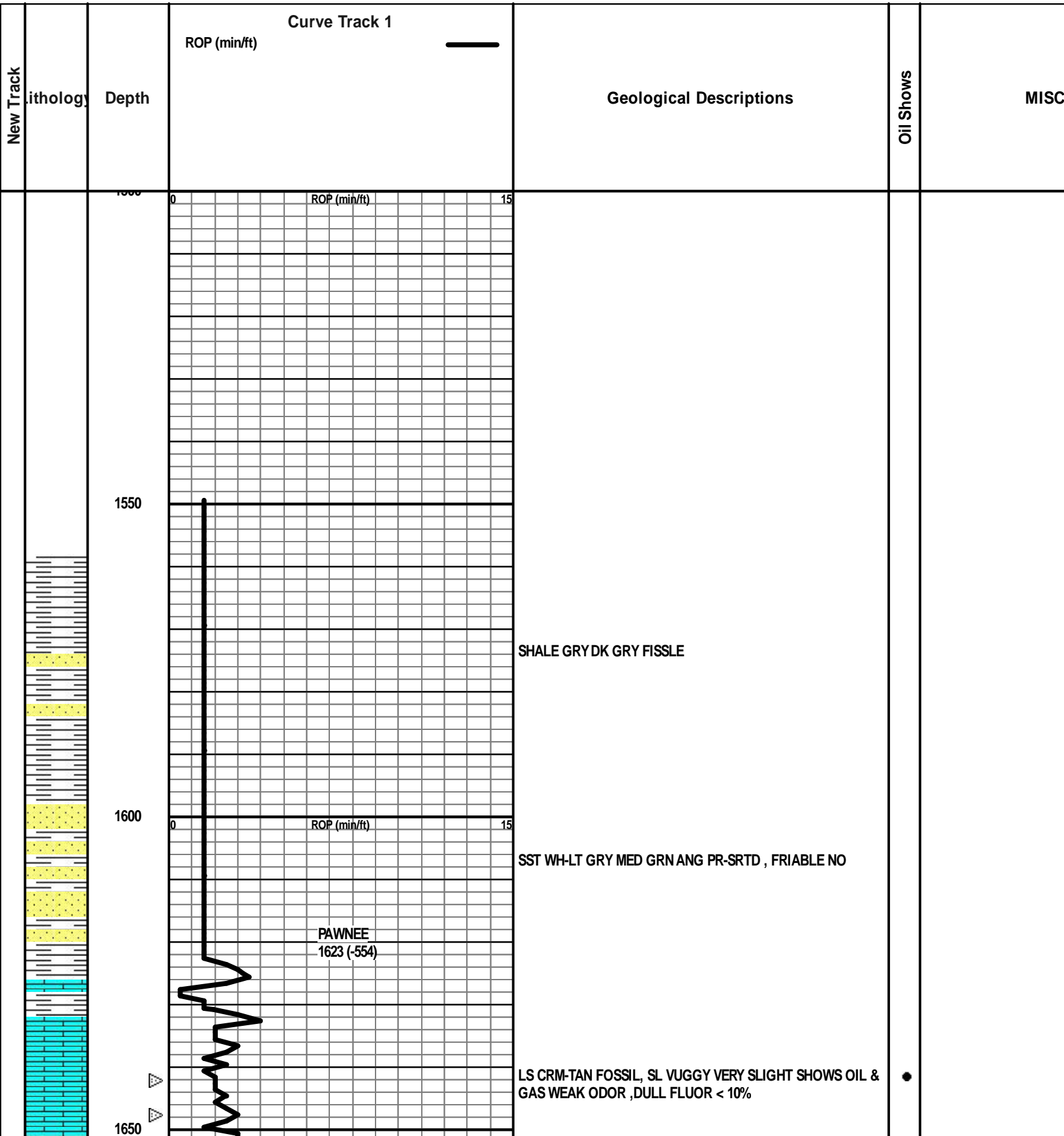
- ROUNDING**
 [R] Rounded
 [r] Subrnd
 [a] Subang
 [A] Angular

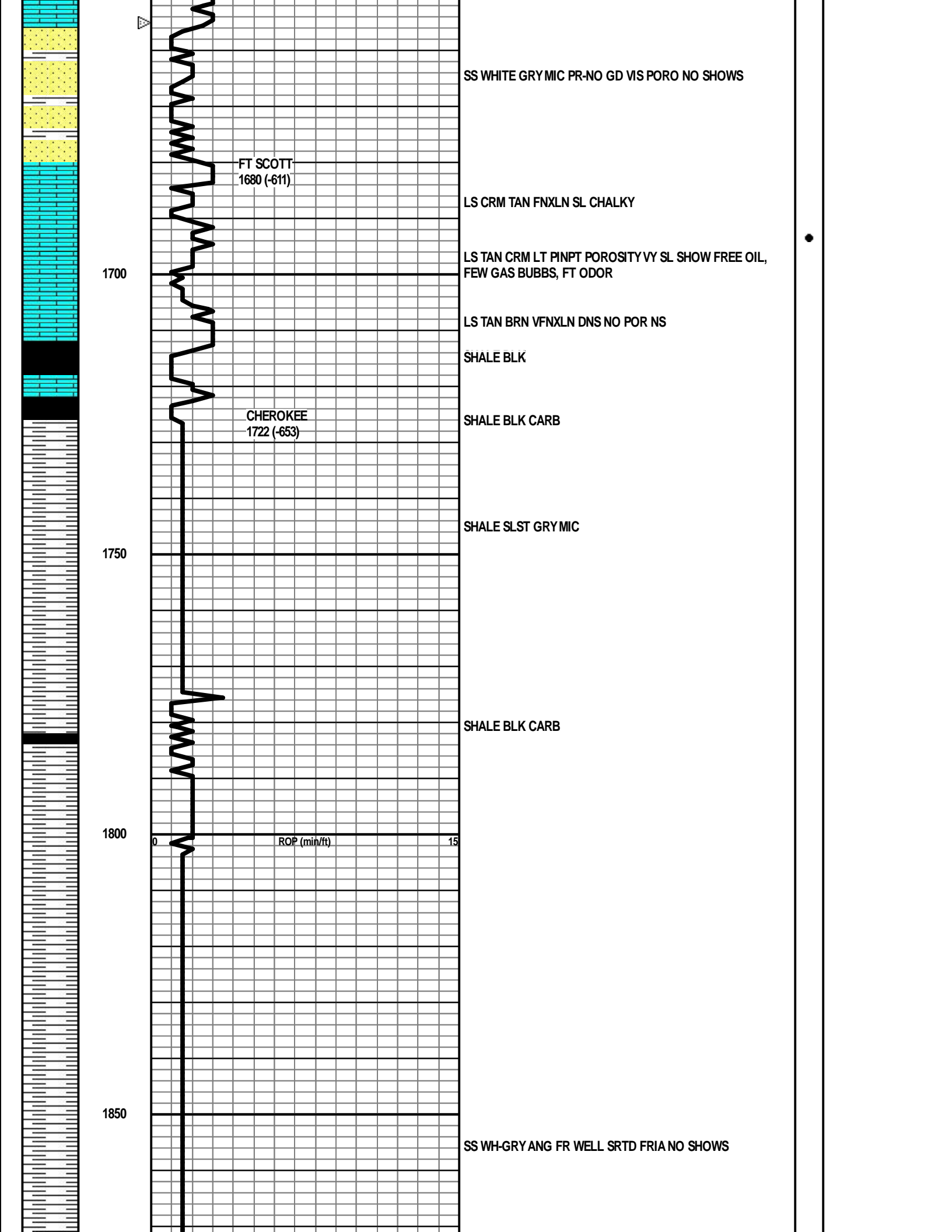
OIL SHOW
 [●] Even

- [⦿] Spotted
 [⊙] Ques
 [D] Dead

- INTERVAL**
 [■] Core
 [□] Dst

- EVENT**
 [▽] Rft
 [▶] Sidewall





1900

1950

2000

2050

MISSISSIPPIAN
2999 (-930)
ROP (min/ft)

MISS POROSITY
2005 (-936)

dolomite dk rich brown sucrosic, gd interxn pinpoint porosity, gd show free oil & gas, gd odor, fr brt fluoresence

dolomite/lime dk brn fossil-sucrosic excellent vuggy fossil porosity, gd shows free oil & gas, wash oil in wet samples, 90 % fluor, good odor

ls-dolomic, dk brn cherty in pt, fr show free oil & gas, dull yell fluor ~ 60% lt-fr odor

ls wh-tan fossil very cherty /fossil white very slight shows of dk hvy oil, dk black resid stain

● ODOR

● ODOR

● LT ODOR

