



TEMPORARY ABANDONMENT WELL APPLICATION

OPERATOR: License# _____
 Name: _____
 Address 1: _____
 Address 2: _____
 City: _____ State: _____ Zip: _____ + _____
 Contact Person: _____
 Phone: (_____) _____
 Contact Person Email: _____
 Field Contact Person: _____
 Field Contact Person Phone: (_____) _____

API No. 15- _____
 Spot Description: _____
 _____ - _____ - _____ - _____ Sec. _____ Twp. _____ S. R. _____ E W
 _____ feet from N / S Line of Section
 _____ feet from E / W Line of Section
 GPS Location: Lat: _____, Long: _____
(e.g. xx.xxxxx) (e.g. -xxx.xxxxx)
 Datum: NAD27 NAD83 WGS84
 County: _____ Elevation: _____ GL KB
 Lease Name: _____ Well #: _____
 Well Type: (check one) Oil Gas OG WSW Other: _____
 SWD Permit #: _____ ENHR Permit #: _____
 Gas Storage Permit #: _____
 Spud Date: _____ Date Shut-In: _____

	Conductor	Surface	Production	Intermediate	Liner	Tubing
Size						
Setting Depth						
Amount of Cement						
Top of Cement						
Bottom of Cement						

Casing Fluid Level from Surface: _____ How Determined? _____ Date: _____

Casing Squeeze(s): _____ to _____ w / _____ sacks of cement, _____ to _____ w / _____ sacks of cement. Date: _____
(top) (bottom) (top) (bottom)

Do you have a valid Oil & Gas Lease? Yes No

Depth and Type: Junk in Hole at _____ Tools in Hole at _____ Casing Leaks: Yes No Depth of casing leak(s): _____
(depth) (depth)

Type Completion: ALT. I ALT. II Depth of: DV Tool: _____ w / _____ sacks of cement Port Collar: _____ w / _____ sack of cement
(depth) (depth)

Packer Type: _____ Size: _____ Inch Set at: _____ Feet

Total Depth: _____ Plug Back Depth: _____ Plug Back Method: _____

Geological Data:

Formation Name	Formation Top	Formation Base	Completion Information
1. _____	At: _____	to _____ Feet	Perforation Interval _____ to _____ Feet or Open Hole Interval _____ to _____ Feet
2. _____	At: _____	to _____ Feet	Perforation Interval _____ to _____ Feet or Open Hole Interval _____ to _____ Feet

~~UNDER PENALTY OF PERJURY I HEREBY ATTEST THAT THE INFORMATION CONTAINED HEREIN IS TRUE AND CORRECT TO THE BEST OF MY KNOWLEDGE~~

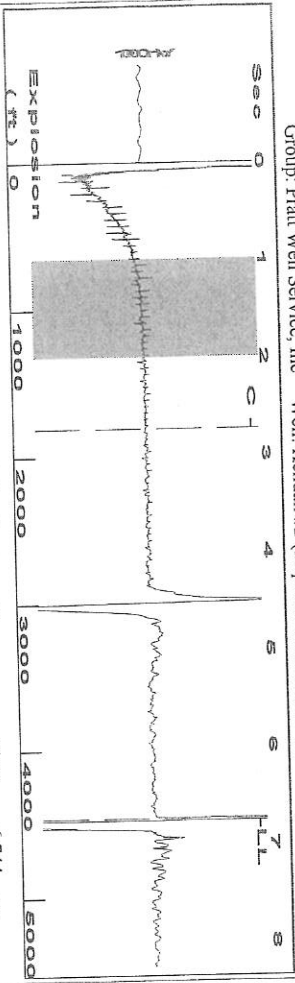
Submitted Electronically

Do NOT Write in This Space - KCC USE ONLY	Date Tested: _____	Results: _____	Date Plugged: _____	Date Repaired: _____	Date Put Back in Service: _____
	Review Completed by: _____ Comments: _____				
TA Approved: <input type="checkbox"/> Yes <input type="checkbox"/> Denied Date: _____					

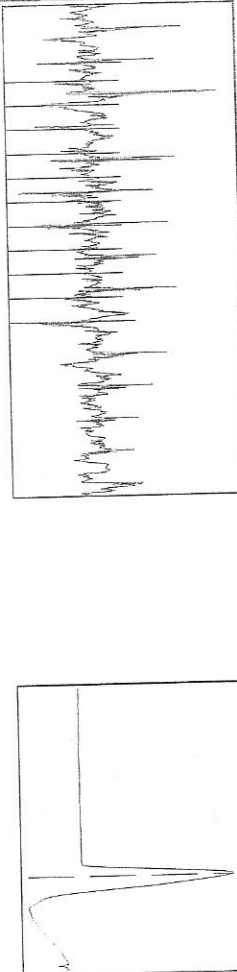
Mail to the Appropriate KCC Conservation Office:

	KCC District Office #1 - 210 E. Frontview, Suite A, Dodge City, KS 67801	Phone 620.225.8888
	KCC District Office #2 / UPGS - 3450 N. Rock Road, Building 600, Suite 601, Wichita, KS 67226	Phone 316.630.4000
	KCC District Office #3 - 1500 SW Seventh Steet, Chanute, KS 66720	Phone 620.432.2300
	KCC District Office #4 - 2301 E. 13th Street, Hays, KS 67601-2651	Phone 785.625.0550

Group: Pratt Well Service, Inc Well: Kendall #2 (acquired on: 07/02/13 10:53:07)



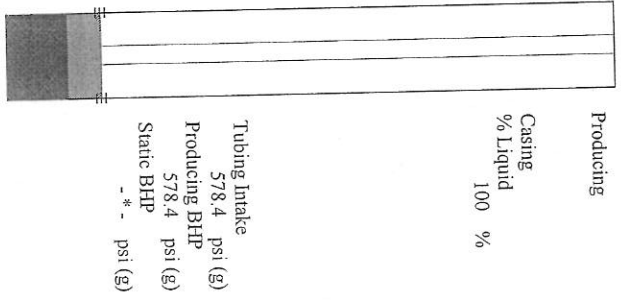
Filter Type High Pass Automatic Collar Count Yes
 Manual Acoustic Velo 1296.52 fts Manual JTS/sec 20.4499
 Time 6.744 sec
 Joints 140.845 Jts
 Depth 4464.79 ft



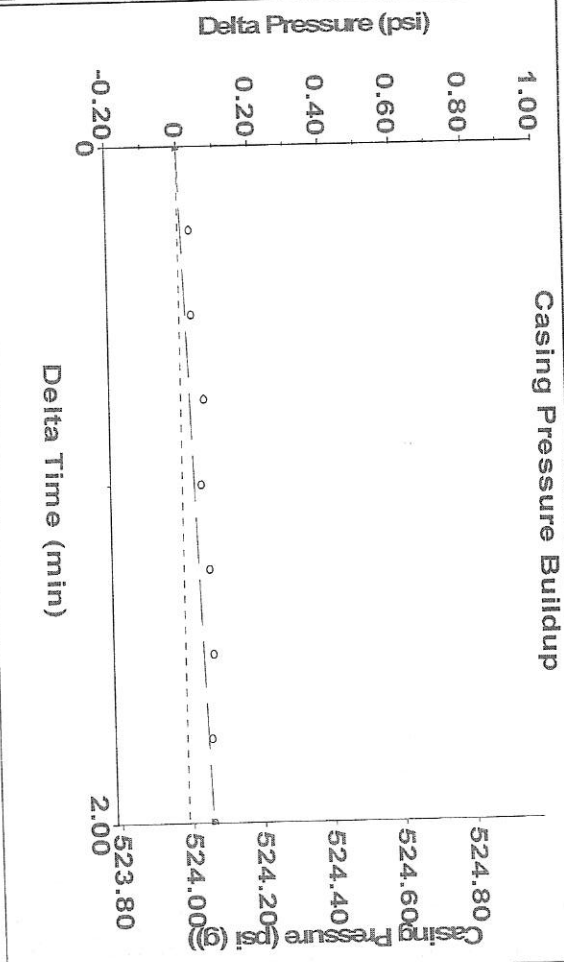
Analysis Method: Automatic

Group: Pratt Well Service, Inc Well: Kendall #2 (acquired on: 07/02/13 10:53:07)

Production Current	Potential	Casing Pressure	Producing
Oil -*-	BBL/D -*-	524.0 psi (g)	Casing % Liquid 100 %
Water -*-	BBL/D -*-	Casing Pressure Buildup 0.1 psi	
Gas -*-	Mscf/D -*-	2.00 min	
IPR Method PBHP/SBHP	Vogel -*-	Gas/Liquid Interface Pressure 582.3 psi (g)	
Production Efficiency	0.0	Liquid Level Depth 4464.79 ft	
Oil 40 deg API		Tubing Intake Depth 4150.00 ft	
Water 1.05 Sp.Gr.H2O		Formation Depth 4155.00 ft	
Gas 0.65 Sp.Gr.AIR			
Acoustic Velocity 1324.08 fts			

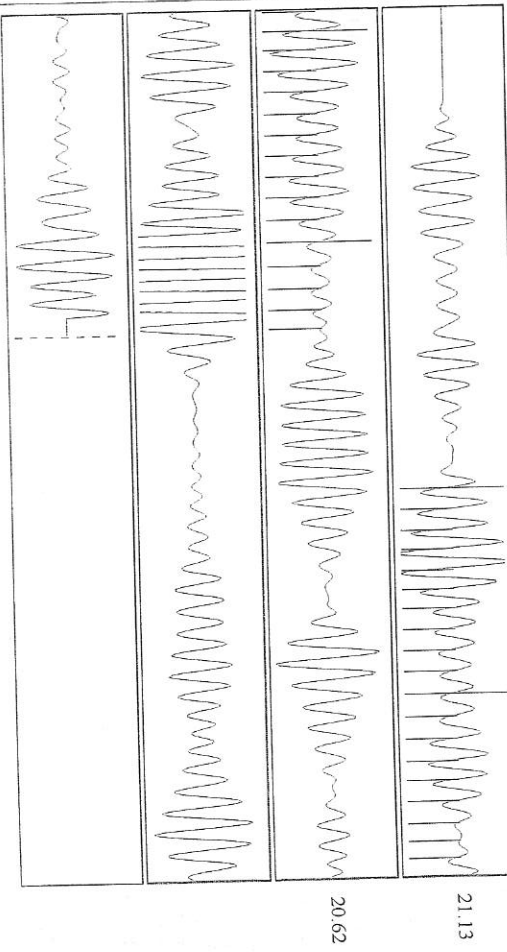


Group: Pratt Well Service, Inc Well: Kendall #2 (acquired on: 07/02/13 10:53:07)



Change in Pressure 0.07 psi PT 9768
 Change in Time 2.00 min Range 0 - ? psi

Group: Pratt Well Service, Inc Well: Kendall #2 (acquired on: 07/02/13 10:53:07)



Acoustic Velocity	1324.08 fts	Joints counted	34
Joints Per Second	20.8845 Jts/sec	Joints to liquid level	140.845
Depth to liquid level	4464.79 ft	Filter Width	18.4499
Automatic Collar Count	Yes	Time to 1st Collar	1.108
			22.4499
			2.736