



## TEMPORARY ABANDONMENT WELL APPLICATION

OPERATOR: License# \_\_\_\_\_  
 Name: \_\_\_\_\_  
 Address 1: \_\_\_\_\_  
 Address 2: \_\_\_\_\_  
 City: \_\_\_\_\_ State: \_\_\_\_\_ Zip: \_\_\_\_\_ + \_\_\_\_\_  
 Contact Person: \_\_\_\_\_  
 Phone: ( \_\_\_\_\_ ) \_\_\_\_\_  
 Contact Person Email: \_\_\_\_\_  
 Field Contact Person: \_\_\_\_\_  
 Field Contact Person Phone: ( \_\_\_\_\_ ) \_\_\_\_\_

API No. 15- \_\_\_\_\_  
 Spot Description: \_\_\_\_\_  
 \_\_\_\_\_ - \_\_\_\_\_ - \_\_\_\_\_ - \_\_\_\_\_ Sec. \_\_\_\_\_ Twp. \_\_\_\_\_ S. R. \_\_\_\_\_  E  W  
 \_\_\_\_\_ feet from  N /  S Line of Section  
 \_\_\_\_\_ feet from  E /  W Line of Section  
 GPS Location: Lat: \_\_\_\_\_, Long: \_\_\_\_\_  
(e.g. xx.xxxxx) (e.g. -xxx.xxxxx)  
 Datum:  NAD27  NAD83  WGS84  
 County: \_\_\_\_\_ Elevation: \_\_\_\_\_  GL  KB  
 Lease Name: \_\_\_\_\_ Well #: \_\_\_\_\_  
 Well Type: (check one)  Oil  Gas  OG  WSW  Other: \_\_\_\_\_  
 SWD Permit #: \_\_\_\_\_  ENHR Permit #: \_\_\_\_\_  
 Gas Storage Permit #: \_\_\_\_\_  
 Spud Date: \_\_\_\_\_ Date Shut-In: \_\_\_\_\_

	Conductor	Surface	Production	Intermediate	Liner	Tubing
Size						
Setting Depth						
Amount of Cement						
Top of Cement						
Bottom of Cement						

Casing Fluid Level from Surface: \_\_\_\_\_ How Determined? \_\_\_\_\_ Date: \_\_\_\_\_

Casing Squeeze(s): \_\_\_\_\_ to \_\_\_\_\_ w / \_\_\_\_\_ sacks of cement, \_\_\_\_\_ to \_\_\_\_\_ w / \_\_\_\_\_ sacks of cement. Date: \_\_\_\_\_  
(top) (bottom) (top) (bottom)

Do you have a valid Oil & Gas Lease?  Yes  No

Depth and Type:  Junk in Hole at \_\_\_\_\_  Tools in Hole at \_\_\_\_\_ Casing Leaks:  Yes  No Depth of casing leak(s): \_\_\_\_\_  
(depth) (depth)

Type Completion:  ALT. I  ALT. II Depth of:  DV Tool: \_\_\_\_\_ w / \_\_\_\_\_ sacks of cement  Port Collar: \_\_\_\_\_ w / \_\_\_\_\_ sack of cement  
(depth) (depth)

Packer Type: \_\_\_\_\_ Size: \_\_\_\_\_ Inch Set at: \_\_\_\_\_ Feet

Total Depth: \_\_\_\_\_ Plug Back Depth: \_\_\_\_\_ Plug Back Method: \_\_\_\_\_

**Geological Data:**

Formation Name	Formation Top	Formation Base	Completion Information
1. _____	At: _____	to _____ Feet	Perforation Interval _____ to _____ Feet or Open Hole Interval _____ to _____ Feet
2. _____	At: _____	to _____ Feet	Perforation Interval _____ to _____ Feet or Open Hole Interval _____ to _____ Feet

~~UNDER PENALTY OF PERJURY I HEREBY ATTEST THAT THE INFORMATION CONTAINED HEREIN IS TRUE AND CORRECT TO THE BEST OF MY KNOWLEDGE~~

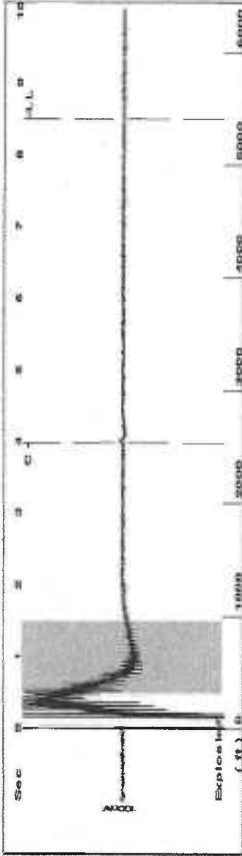
Submitted Electronically

<b>Do NOT Write in This Space - KCC USE ONLY</b>	Date Tested: _____	Results: _____	Date Plugged: _____	Date Repaired: _____	Date Put Back in Service: _____
	Review Completed by: _____ Comments: _____				
TA Approved: <input type="checkbox"/> Yes <input type="checkbox"/> Denied Date: _____					

**Mail to the Appropriate KCC Conservation Office:**

	KCC District Office #1 - 210 E. Frontview, Suite A, Dodge City, KS 67801	Phone 620.225.8888
	KCC District Office #2 / UPGS - 3450 N. Rock Road, Building 600, Suite 601, Wichita, KS 67226	Phone 316.630.4000
	KCC District Office #3 - 1500 SW Seventh Steet, Chanute, KS 66720	Phone 620.432.2300
	KCC District Office #4 - 2301 E. 13th Street, Hays, KS 67601-2651	Phone 785.625.0550

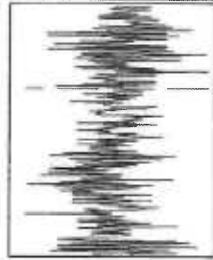
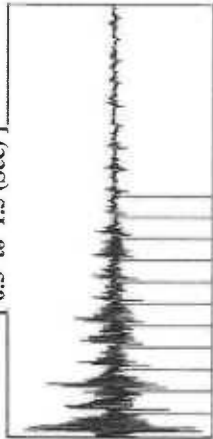
Group: Devon Energy Well: Oltman 1 (acquired on: 07/11/13 12:25:25)



Filter Type High Pass Automatic Collar Count Yes  
 Manual Acoustic Velocity 1260.44 ft/s Manual JTS/sec 19.8807

Time 8.5 sec  
 Joints 170.673 Jts  
 Depth 5410.34 ft

0.5 to 1.5 (Sec)



Group: Devon Energy Well: Oltman 1 (acquired on: 07/11/13 12:25:25)

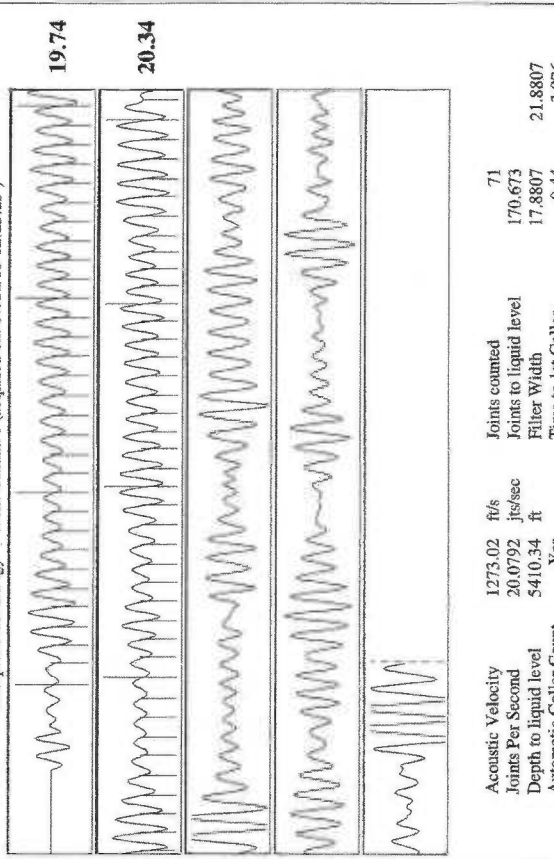
NO PRESSURE DATA AVAILABLE

Change in Pressure 0.00 psi PT 11509 0 - 7 psi  
 Change in Time 0.00 min Range

**Analysis Method: Automatic**

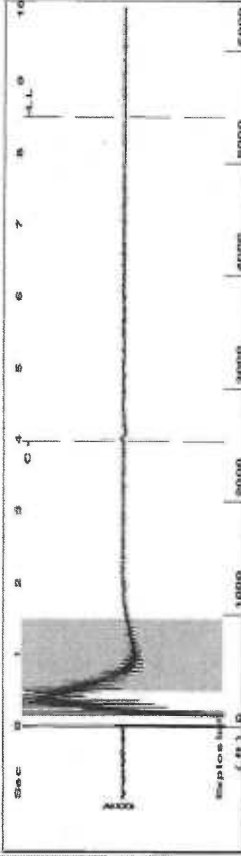
Group: Devon Energy Well: Oltman 1 (acquired on: 07/11/13 12:25:25)

Production	Potential	Casing Pressure	Producing
Oil - * -	BBL/D -14.7 psi (g)	Casing Pressure Buildup	Annular Gas Flow
Water - * -	- * - BBL/D	- * - psi	% Liquid
Gas - * -	- * - Mscf/D	- * - min	100 %
IPR Method	Vogel	Gas/Liquid Interface Pressure	Pump Intake
PBHP/SBHP	- * -	-14.7 psi (g)	- * - psi (g)
Production Efficiency	0.0	Liquid Level Depth	Producing BHP
Oil 40 deg API		5410.34 ft	-14.7 psi (g)
Water 1.05 Sp.Gr.H2O		Pump Intake Depth	Static BHP
Gas 0.70 Sp.Gr.AIR		- * - ft	- * - psi (g)
Acoustic Velocity	1273.02 ft/s	Formation Depth	
		5000.00 ft	
Formation Submergence			
Total Gaseous Liquid Column HT (TVD)	- * - ft		
Equivalent Gas Free Liquid HT (TVD)	- * - ft		
Acoustic Test			



Acoustic Velocity 1273.02 ft/s Joints counted 71  
 Joints Per Second 20.0792 Jts/sec Joints to liquid level 170.673  
 Depth to liquid level 5410.34 ft Filter Width 17.8807  
 Automatic Collar Count Yes Time to 1st Collar 0.44 21.8807 3.976

Group: Devon Energy Well: Oltman 1 (acquired on: 07/11/13 12:25:25)



Filter Type High Pass Automatic Collar Count Yes Time 8.5 sec  
 Manual Acoustic Velocity 1260.44 ft/s Manual JTS/sec 19.8807  
 Joints 170.673 Jts  
 Depth 5410.34 ft



NO PRESSURE DATA AVAILABLE

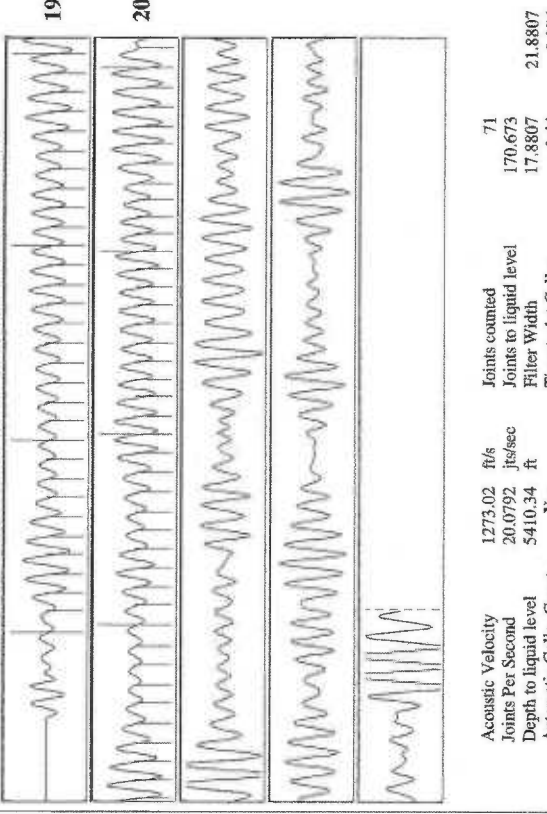
Change in Pressure 0.00 psi PT 11509 Range 0 - 7 psi  
 Change in Time 0.00 min

Group: Devon Energy Well: Oltman 1 (acquired on: 07/11/13 12:25:25)

**Analysis Method: Automatic**

Group: Devon Energy Well: Oltman 1 (acquired on: 07/11/13 12:25:25)

Production	Potential	Casing Pressure	Producing
Oil - * - BBL/D	-14.7 psi (g)	-14.7 psi (g)	- * - psi (g)
Water - * - BBL/D	Casing Pressure Buildup	- * - psi	Producing BHP
Gas - * - Mscf/D	- * - psi	- * - psi	-14.7 psi (g)
IPR Method Vogel	Gas/Liquid Interface Pressure	-14.7 psi (g)	Static BHP
PBHP/SBHP - * -	Liquid Level Depth	5410.34 ft	- * - psi (g)
Production Efficiency 0.0	Pump Intake Depth	- * - ft	
Oil 40 deg API	Formation Depth	5000.00 ft	
Water 1.05 Sp.Gr.H2O			
Gas 0.70 Sp.Gr.AIR			
Acoustic Velocity 1273.02 ft/s			
Formation Submergence			
Total Gaseous Liquid Column HT (TYVD)	- * - ft		
Equivalent Gas Free Liquid HT (TYVD)	- * - ft		
Acoustic Test			



Acoustic Velocity 1273.02 ft/s Joints counted 71  
 Joints Per Second 20.0792 Jts/sec Joints to liquid level 170.673  
 Depth to liquid level 5410.34 ft Filter Width 21.8807  
 Automatic Collar Count Yes Time to 1st Collar 0.44 3.976