



**TEMPORARY ABANDONMENT WELL APPLICATION**

All blanks must be complete

OPERATOR: License# \_\_\_\_\_  
Name: \_\_\_\_\_  
Address 1: \_\_\_\_\_  
Address 2: \_\_\_\_\_  
City: \_\_\_\_\_ State: \_\_\_\_\_ Zip: \_\_\_\_\_ + \_\_\_\_\_  
Contact Person: \_\_\_\_\_  
Phone: ( \_\_\_\_\_ ) \_\_\_\_\_  
Contact Person Email: \_\_\_\_\_  
Field Contact Person: \_\_\_\_\_  
Field Contact Person Phone: ( \_\_\_\_\_ ) \_\_\_\_\_

API No. 15- \_\_\_\_\_  
Spot Description: \_\_\_\_\_  
\_\_\_\_ - \_\_\_\_ - \_\_\_\_ - \_\_\_\_ Sec. \_\_\_\_\_ Twp. \_\_\_\_\_ S. R. \_\_\_\_\_  E  W  
\_\_\_\_\_ feet from  N /  S Line of Section  
\_\_\_\_\_ feet from  E /  W Line of Section  
GPS Location: Lat: \_\_\_\_\_, Long: \_\_\_\_\_  
(e.g. xx.xxxxx) (e.g. -xxx.xxxxx)  
Datum:  NAD27  NAD83  WGS84  
County: \_\_\_\_\_ Elevation: \_\_\_\_\_  GL  KB  
Lease Name: \_\_\_\_\_ Well #: \_\_\_\_\_  
Well Type: (check one)  Oil  Gas  OG  WSW  Other: \_\_\_\_\_  
 SWD Permit #: \_\_\_\_\_  ENHR Permit #: \_\_\_\_\_  
 Gas Storage Permit #: \_\_\_\_\_  
Spud Date: \_\_\_\_\_ Date Shut-In: \_\_\_\_\_

	Conductor	Surface	Production	Intermediate	Liner	Tubing
Size						
Setting Depth						
Amount of Cement						
Top of Cement						
Bottom of Cement						

Casing Fluid Level from Surface: \_\_\_\_\_ How Determined? \_\_\_\_\_ Date: \_\_\_\_\_

Casing Squeeze(s): \_\_\_\_\_ to \_\_\_\_\_ w / \_\_\_\_\_ sacks of cement, \_\_\_\_\_ to \_\_\_\_\_ w / \_\_\_\_\_ sacks of cement. Date: \_\_\_\_\_  
(top) (bottom) (top) (bottom)

Do you have a valid Oil & Gas Lease?  Yes  No

Depth and Type:  Junk in Hole at \_\_\_\_\_  Tools in Hole at \_\_\_\_\_ Casing Leaks:  Yes  No Depth of casing leak(s): \_\_\_\_\_  
(depth) (depth)

Type Completion:  ALT. I  ALT. II Depth of:  DV Tool: \_\_\_\_\_ w / \_\_\_\_\_ sacks of cement  Port Collar: \_\_\_\_\_ w / \_\_\_\_\_ sack of cement  
(depth) (depth)

Packer Type: \_\_\_\_\_ Size: \_\_\_\_\_ Inch Set at: \_\_\_\_\_ Feet

Total Depth: \_\_\_\_\_ Plug Back Depth: \_\_\_\_\_ Plug Back Method: \_\_\_\_\_

**Geological Data:**

Formation Name	Formation Top	Formation Base	Completion Information
1. _____	At: _____	to _____ Feet	Perforation Interval _____ to _____ Feet or Open Hole Interval _____ to _____ Feet
2. _____	At: _____	to _____ Feet	Perforation Interval _____ to _____ Feet or Open Hole Interval _____ to _____ Feet

UNDER PENALTY OF PERJURY I HEREBY ATTEST THAT THE INFORMATION CONTAINED HEREIN IS TRUE AND CORRECT TO THE BEST OF MY KNOWLEDGE

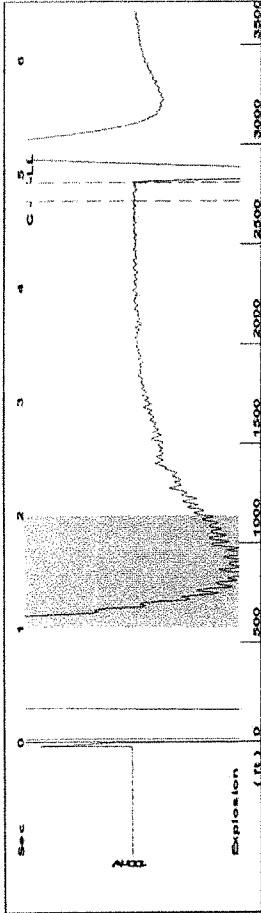
**Submitted Electronically**

<b>Do NOT Write in This Space - KCC USE ONLY</b>	Date Tested: _____	Results: _____	Date Plugged: _____	Date Repaired: _____	Date Put Back in Service: _____
	Review Completed by: _____ Comments: _____				
TA Approved: <input type="checkbox"/> Yes <input type="checkbox"/> Denied Date: _____					

**Mail to the Appropriate KCC Conservation Office:**

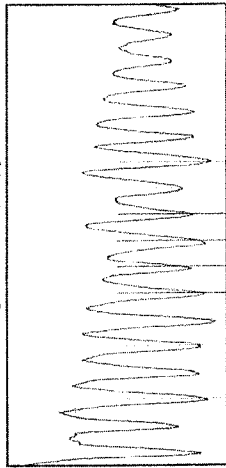
	KCC District Office #1 - 210 E. Frontview, Suite A, Dodge City, KS 67801	Phone 620.225.8888
	KCC District Office #2 / UPGS - 3450 N. Rock Road, Building 600, Suite 601, Wichita, KS 67226	Phone 316.630.4000
	KCC District Office #3 - 1500 SW Seventh Steet, Chanute, KS 66720	Phone 620.432.2300
	KCC District Office #4 - 2301 E. 13th Street, Hays, KS 67601-2651	Phone 785.625.0550

Group: TAD WELLS Well: REED B-1 (acquired on: 07/15/13 14:45:41)



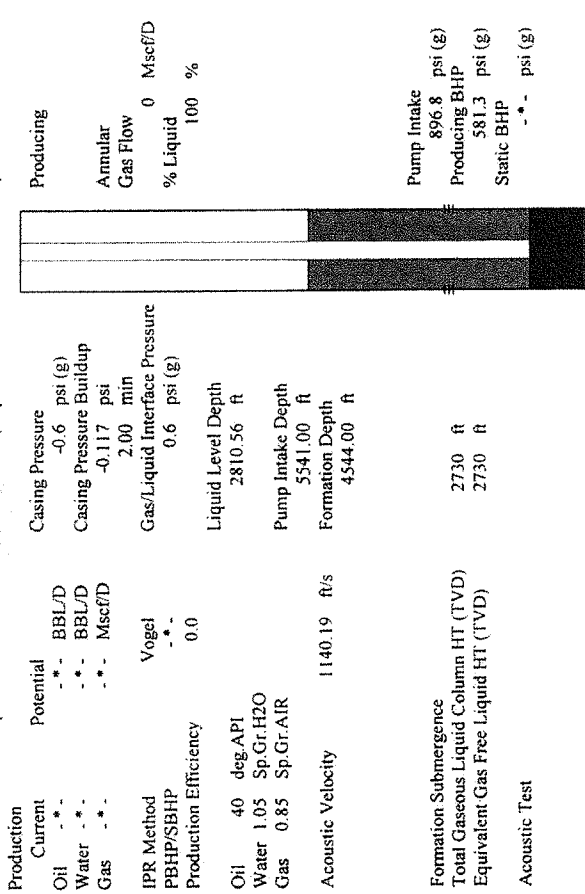
Filter Type High Pass Automatic Collar Count Yes Time 4.93 sec  
 Manual Acoustic Velo 1106.46 ft/s Manual JTS/sec 17.452 Joints 88.6612 Jts  
 Depth 2810.56 ft

[ 1.0 to 2.0 (Sec) ]



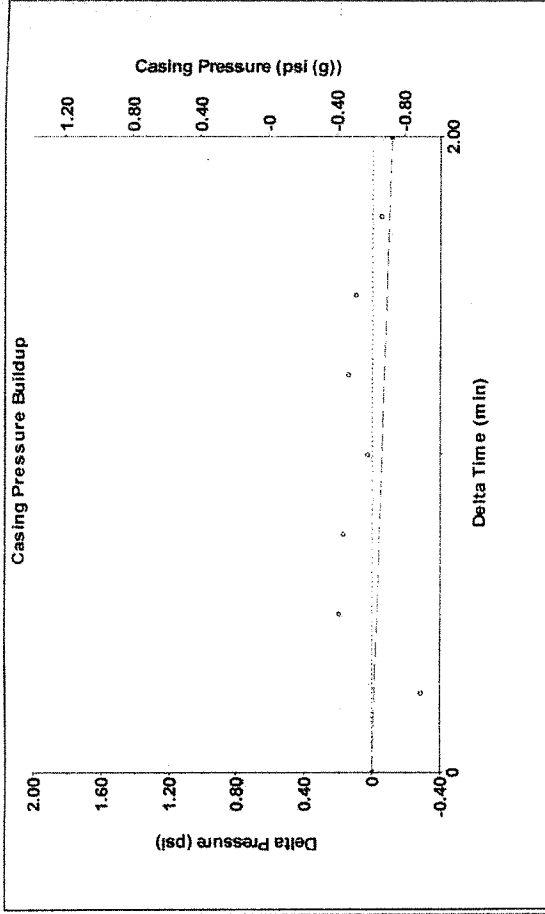
Analysis Method: Automatic

Group: TAD WELLS Well: REED B-1 (acquired on: 07/15/13 14:45:41)



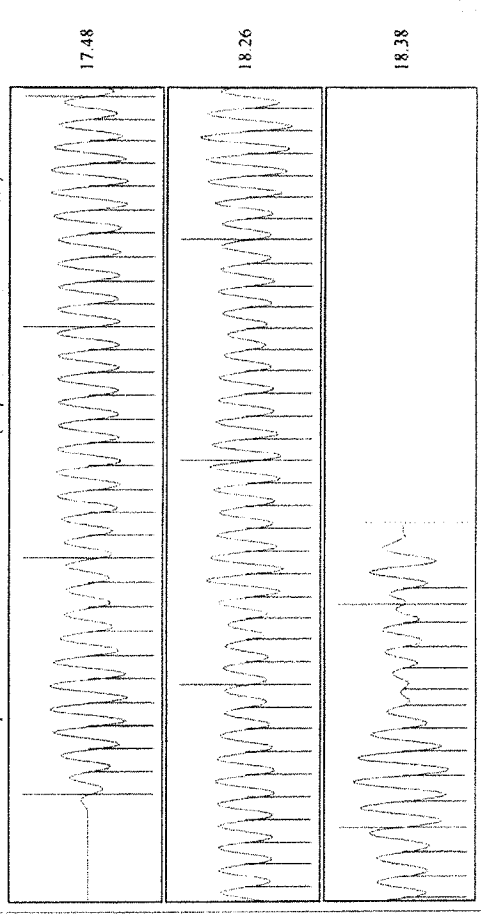
Production	Potential	Casing Pressure	Producing
Oil - * - BBL/D	-0.6 psi (g)	-0.6 psi (g)	Annular Gas Flow 0 Mscf/D
Water - * - BBL/D	-0.117 psi	-0.117 psi	% Liquid 100 %
Gas - * - Mscf/D	2.00 min	2.00 min	
IPR Method Vogel	Gas/Liquid Interface Pressure	0.6 psi (g)	
PBHP/SBHP - * -			
Production Efficiency 0.0			
Oil 40 deg API	Liquid Level Depth		Pump Intake 896.8 psi (g)
Water 1.05 Sp.Gr.H2O	2810.56 ft		Producing BHP 581.3 psi (g)
Gas 0.85 Sp.Gr.AIR	Pump Intake Depth		Static BHP - * - psi (g)
Acoustic Velocity 1140.19 ft/s	5541.00 ft		
	Formation Depth		
	4544.00 ft		
Formation Submergence			
Total Gaseous Liquid Column HT (TVD)	2730 ft		
Equivalent Gas Free Liquid HT (TVD)	2730 ft		
Acoustic Test			

Group: TAD WELLS Well: REED B-1 (acquired on: 07/15/13 14:45:41)



Change in Pressure -0.12 psi PT 9424 Range  
 Change in Time 2.00 min

Group: TAD WELLS Well: REED B-1 (acquired on: 07/15/13 14:45:41)



Acoustic Velocity 1140.19 ft/s Joints counted 81  
 Joints Per Second 17.984 Jts/sec Joints to liquid level 88.6612  
 Depth to liquid level 2810.56 ft Filter Width 19.452  
 Automatic Collar Count Yes Time to 1st Collar 4.768