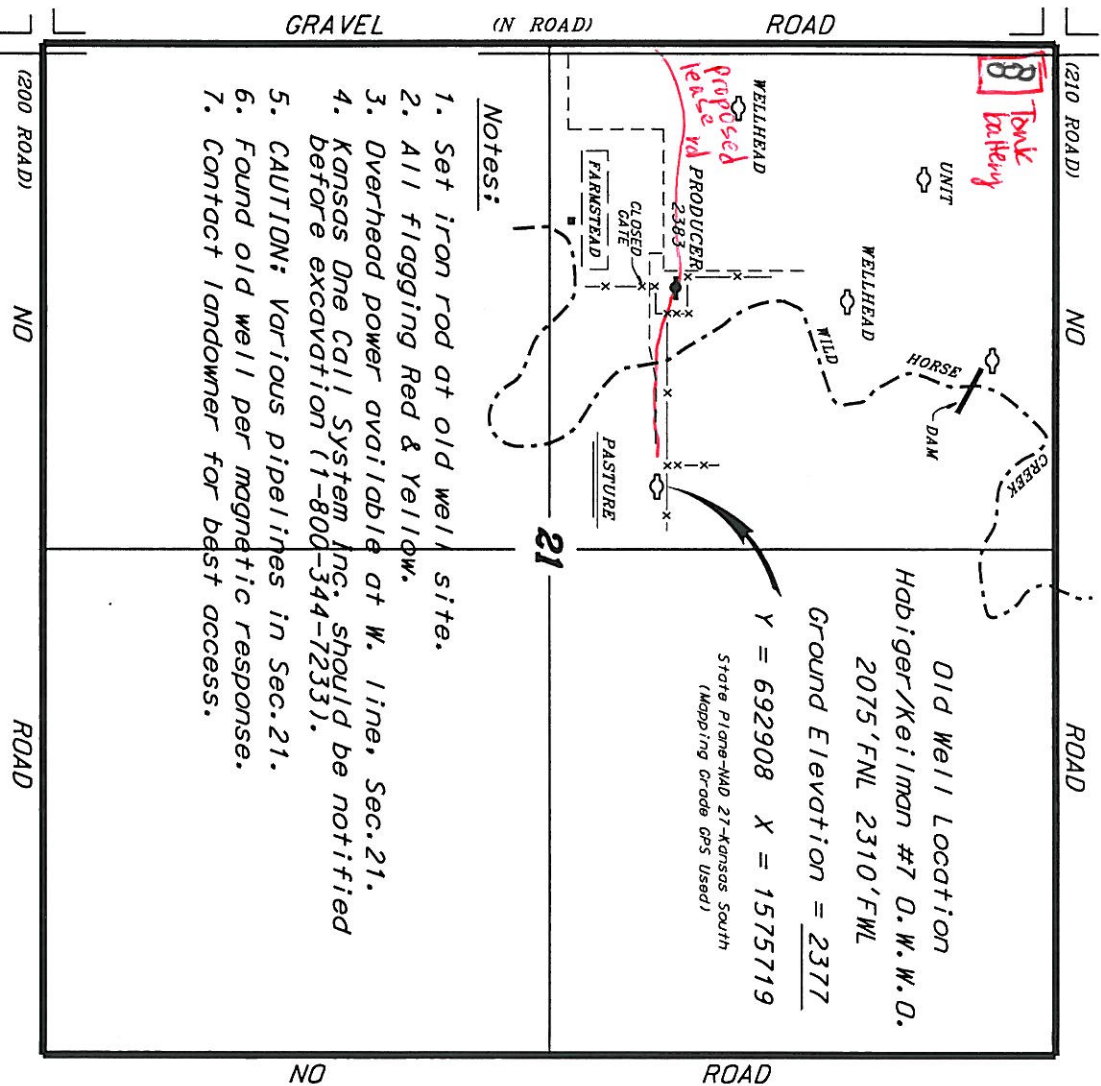
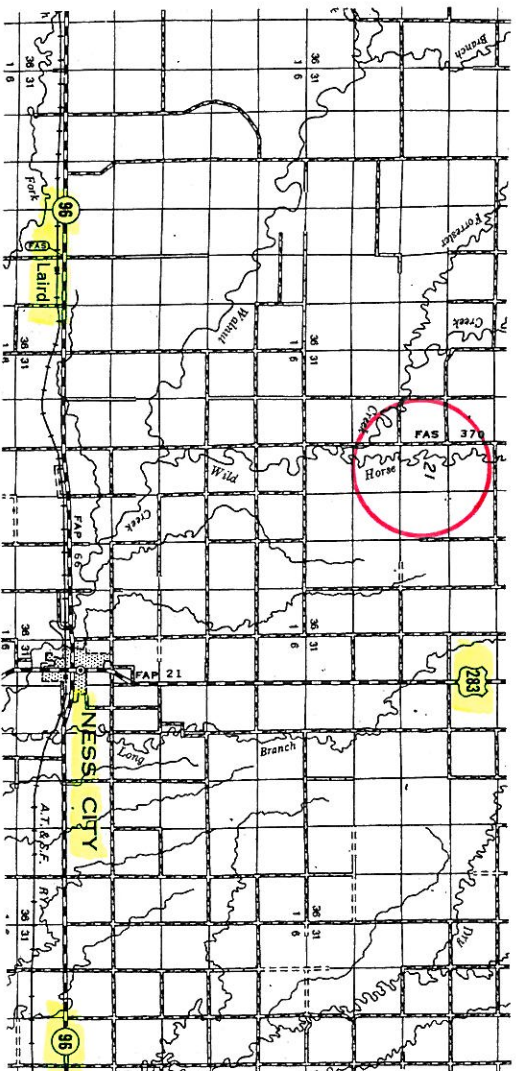


TRANS PACIFIC OIL CORPORATION  
 HABIGER/KEILMAN LEASE  
 NW 1/4, SECTION 21, T17S, R24W  
 NESS COUNTY, KANSAS



- Notes:
1. Set iron rod at old well site.
  2. All flagging Red & Yellow.
  3. Overhead power available at W. line, Sec.21.
  4. Kansas One Call System Inc. should be notified before excavation (1-800-344-7233).
  5. CAUTION: Various pipelines in Sec.21.
  6. Found old well per magnetic response.
  7. Contact landowner for best access.

\*Ingress and egress to location as shown on this plat is per usage only and may not be legally opened for public use. Contact landowner, tenant and county road department for access.



\* Controlling data is based upon the best maps and photographs available to us and upon a regular section of land containing 640 acres.  
 \* Approximate section lines were determined using the normal standard of care of oilfield surveyors practicing in the State of Kansas. The section corners, which establish the precise section lines, are not guaranteed. Therefore, the operator securing this service and occupying this plat and all other portions relying thereon agree to hold Central Kansas Oilfield Services, Inc., its officers and employees harmless from and against all consequential damages and expenses and said liabilities released from any liability from operations derived from National Geographic Vertical Datum.

CENTRAL KANSAS OILFIELD SERVICES, INC. (620)792-1977

Date June 26, 2013