

The following are sample tops with associated datums:

Anhydrite Top - 831 (+946)
 Anhydrite Base - 866 (+911)

SH: gry-grn-blk-brn

LS: wht-tan, fxl'n, mottled, sl foss, sl chalky, NS

SH: gry-blk-grn

LS: crm-brn-gry, fxl'n, mottled, foss, sl chalky, NS

LS: as above

SH: gry-grn-blk

SH: as above

LS: crm-gry, vxl'n, dense, sl foss, NS

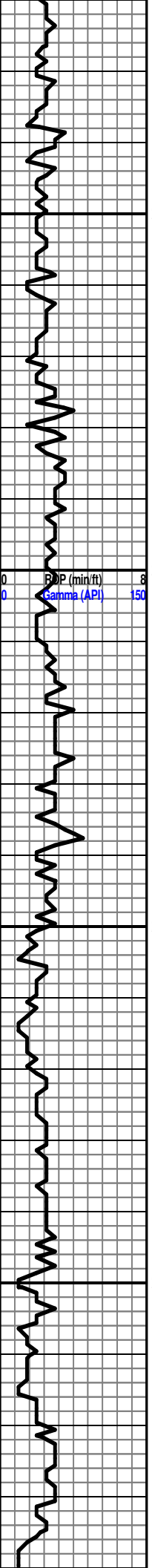
SH: gry-grn

LS & SH: as above

LS & SH: as above

LS & SH: as above

TOPEKA 2638 (-861)



LS: crm-gry, vfxln, foss, sl chalky, dense, NS

SH: gry

2750

LS: crm-gry, fxln, foss, chalky, dense, NS

SH: blk, carb

KING HILL 2759 (-982)

LS: crm-gry, fxln, foss, chalky, fr in xln por, NS

LS: wht-tan, vfxln, foss, chalky, dense, NS

LS: as above

2800

LS: wht-tan-gry, vfxln, dense, chalky, NS

SH: blk, carb

QUEEN HILL 2817 (-1040)

LS: crm-gry, vfxln, dense, chalky, NS w/abund gry shale

LS & SH: as above

2850

SH: blk-gry

LS: crm-tan, fxln, ool in pt, sl foss, sl chalky, NS

LS: as above

LS: as above

SH: blk-gry

2900

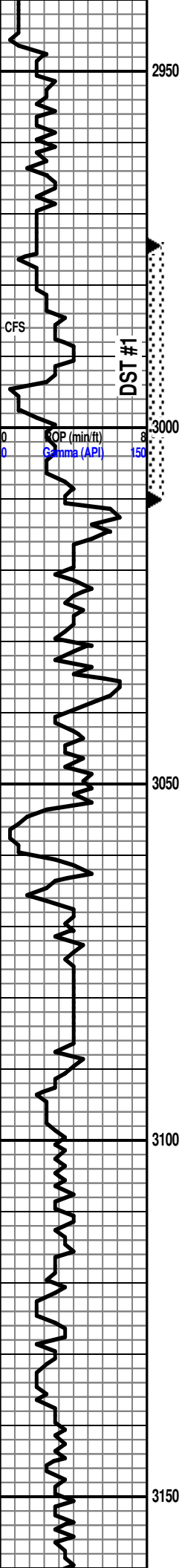
SH: blk-gry-grn

HEEBNER 2898 (-1121)

SH: as above

LS: crm-tan, fxln, foss, sl chalky, dense, NS

LS: as above



SH: gry-grn-brn-red-blk

LANSING 2951 (-1174)

LS: wht-tan, vfxln, dense, cherty, NS

① LS: crm-gry, fxlIn, foss, pr-fr ppt por, ssfo, spotty stn, fr odor

SH: gry-grn-blk

① LS: crm-tan-gry, fxlIn, foss in pt, fr-pr ppt por, ssfo, spotty stn, fr odor

SH: gry-grn-brn

● LS: wht-tan, fxlIn, oolic, fr-gd ppt & vug por, sl foss, fsfo, gd even stn, str odor

① LS: crm-gry, fxlIn, oolitic in pt, mostly dense, ssfo, spotty stn, fr odor

LS: wht-tan-gry, vfxln, dense, NS w/abund gry-grn shale

LS & SH: as above

LS: crm-brn-gry, vfxln, sl foss, dense, NS

LS: crm-gry, fxlIn, oolic, dense to oomold por, NS

LS: crm-tan, vfxln, dense, NS

LS: as above

SH: blk, carb

MUNCIE CRK 3092 (-1315)

LS: crm-tan-gry, vfxln, dense, NS

LS: tan-brn, vfxln, dense, sl chalky, NS

SH: gry-grn-rust

○ LS: crm-tan-gry, fxlIn, oolitic, dense, ssfo, sl edge stn, sl odor

LS: crm-tan, vfxln, dense, sl chalky, NS

○ LS: wht-tan, fxlIn, dense, sl chalky, nsfo, sl edge stn, sl odor

DST #1 2974-3010 (LKC "C-D")

15:30:15:30

IF: Wk surface blow died in 10 min, no return

FF: No blow, no return

Recovery: 2' Mud w/show of oil

IHP: 1431 FHP: 1414

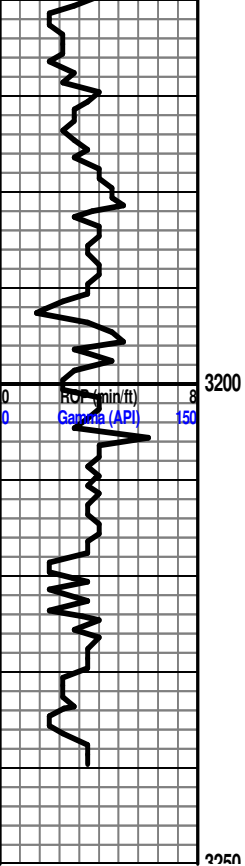
IFP: 22-28 ISIP: 146

FFP: 29-31 FSIP: 58

BHT - 97 F

Strap @ 3110' - 1.51' short to board

Survey @ 3110' - 1/2 degree



- LS: wht-tan, fxl'n, oolitic, pr ppt por, ssfo on brk, spotty str, sl odor
- SH: gry-grn-blk
- ▷ LS: wht-tan-gry, vfxln, dense, sl oolitic, sl chalky, nsfo, tr dead str, no odor
- SH: blk, carb
- LS: wht-tan, fxl'n, oolitic, dense, pr int-ool por, ssfo on brk, sl edge str, sl odor
- LS: wht-tan-gry, vfxln, dense, NS
- LS: as above
- SH: gry-grn-rust-brn
- LS: crm-tan, vfxln, cherty, dense, NS
- LS: as above w/blk-gry-red shale
- RTD - 3240'**

BKC 3218 (-1441)