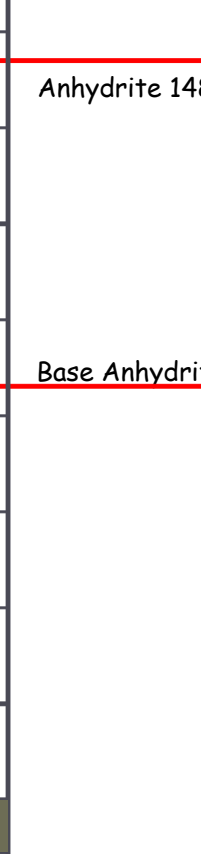


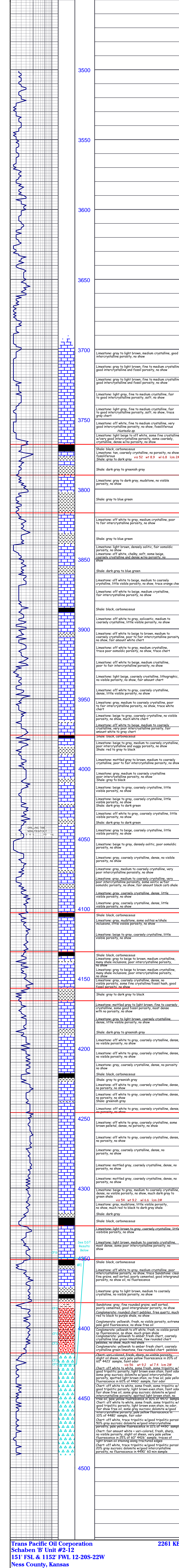


Geological Report
Drilling Time & Sample Log



Company: Trans Pacific Oil Corporation
Lease: Schaben B Unit #2-12
Location: 2201 FSL & 1170 FWL
County: Ness, Kansas
Contractor: Duke Rig #4

Table with columns: Formation, Sample, ELOG, DATUM. Lists geological formations like Toronto, Lansing, Muncie Creek, etc.



Trans Pacific Oil Corporation
Schaben B Unit #2-12
151 FSL & 1152 FWL 12-20S-22W
Ness County, Kansas

Vertical column of lithology descriptions and sample data corresponding to the well log plot, including sample numbers and descriptions.



GENERAL INFORMATION: DST #1: 4350-4426/30-45-30-45
Formation: Mississippian
Time Tool Opened: 09:42:00
Time Test Ended: 15:00:30

Interval: 4350.00 ft (KB) To 4426.00 ft (KB) (TVD)
Total Depth: 4426.00 ft (KB) (TVD)
Hole Diameter: 7.88 inches Hole Condition: Fair

TEST COMMENT: 1st Open 30 minutes Strong blow built to the bottom of a 5 gallon bucket 2.5 minutes.
1st Shut In 45 minutes No blow back.
2nd Open 30 minutes Strong blow blew off bottom bucket in 2 minutes.
2nd Shut in 45 minutes No blow back.

RECOVERY TABLE: Table with columns: Length ft, Description, Volume bbl. Lists fluid recovery data.

PRESSURE SUMMARY: Table with columns: Time (Min), Pressure (psia), Temp (deg F), Annotation. Shows pressure and temperature over time.

