



Pro-Stake LLC

Oil Field & Construction Site Staking

P.O. Box 2324
Garden City, Kansas 67846
Office/Fax: (620) 276-6159
Cell: (620) 272-1499



272116H
PLAT NO.

11000
INVOICE NO.

Herman Loeb, LLC

OPERATOR

Pawnee County, KS

COUNTY

Musselman #5-34

LEASE NAME

335' FSL - 2185' FEL

LOCATION SPOT

34 21s 16w
Sec. Twp. Rng.

SCALE: **1" = 1000'**
DATE STAKED: **July 9th, 2013**
MEASURED BY: **Ben R.**
DRAWN BY: **Luke R.**
AUTHORIZED BY: **Jesse M.**

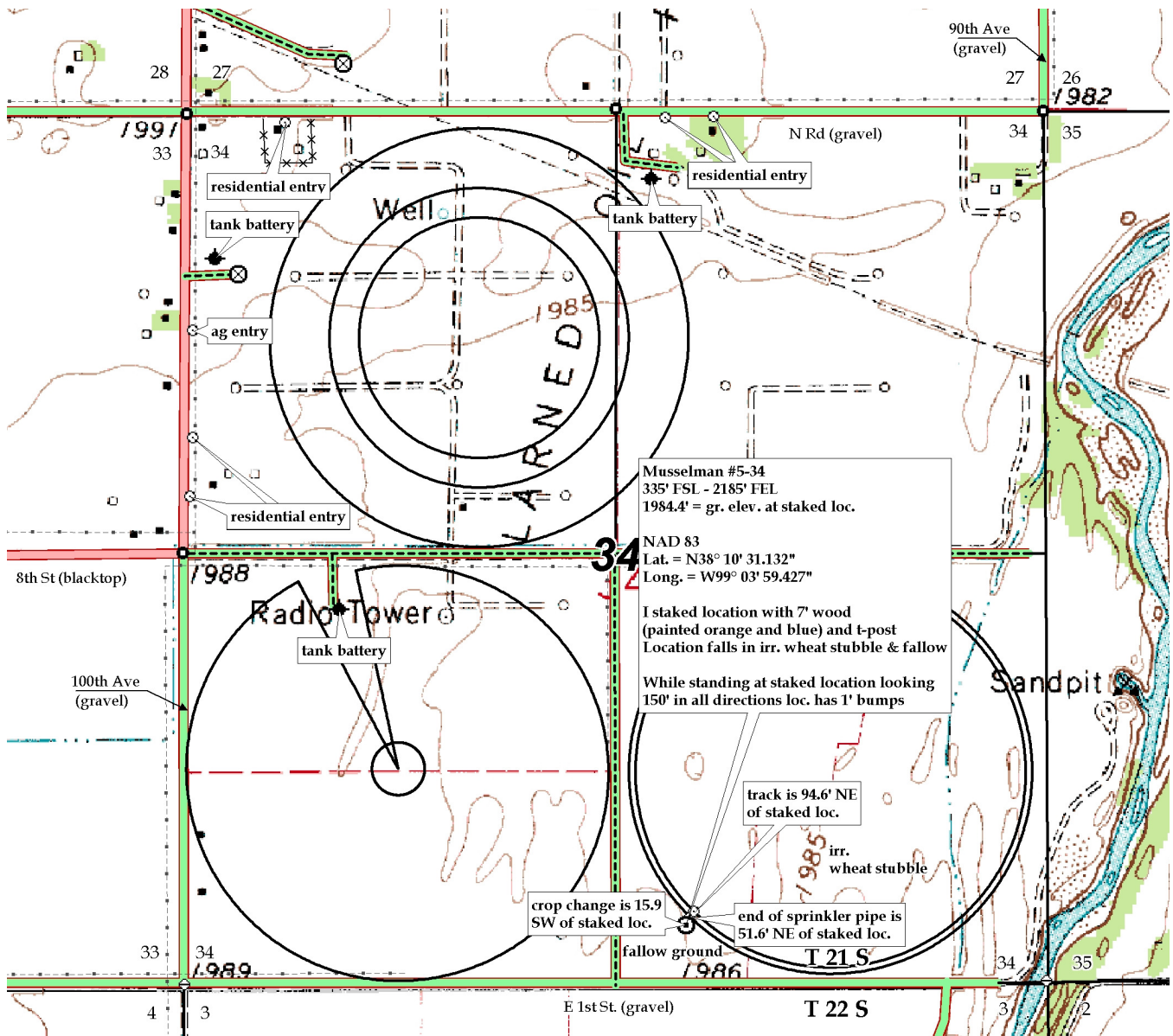


GR. ELEVATION: **1984.4'**

Directions: From the North side of Larned, KS, at the intersection of Hwy 56 South & Hwy 156 & Broadway St North – Now go 1.3 miles East & NE on combined Hwy 56 & 156 – Now go 1.4 miles South on 100th Ave to the SW corner of 34-21s-16w – Now go 0.6 mile West on E 1st St. to ingress North into – Now go 335' North through fallow ground into staked location.

This drawing does not constitute a monumented survey or a land survey plat. This drawing is for construction purposes only.

Final ingress must be verified with land owner or Operator.



Musselman #5-34
335' FSL - 2185' FEL
1984.4' = gr. elev. at staked loc.

NAD 83
Lat. = N38° 10' 31.132"
Long. = W99° 03' 59.427"

I staked location with 7' wood (painted orange and blue) and t-post
Location falls in irr. wheat stubble & fallow

While standing at staked location looking 150' in all directions loc. has 1' bumps

track is 94.6' NE of staked loc.

crop change is 15.9' SW of staked loc.

end of sprinkler pipe is 51.6' NE of staked loc.

fallow ground 1986