



**TRILOBITE  
TESTING, INC.**

# DRILL STEM TEST REPORT

Novy Oil & Gas Inc.

**17-22s-8w Reno Ks.**

P.O.Box 559  
Goddard Ks.67052

**Zwick #1**

Job Ticket: 50838

**DST#: 2**

ATTN: Mac Armstrong

Test Start: 2013.02.01 @ 00:03:28

## GENERAL INFORMATION:

Formation: **Conglomerate**

Deviated: No Whipstock: ft (KB)

Time Tool Opened: 02:37:28

Time Test Ended: 08:45:13

Test Type: Conventional Bottom Hole (Reset)

Tester: Gary Pevoteaux

Unit No: 56

**Interval: 3528.00 ft (KB) To 3600.00 ft (KB) (TVD)**

Reference Elevations: 1705.00 ft (KB)

Total Depth: 3600.00 ft (KB) (TVD)

1695.00 ft (CF)

Hole Diameter: 7.88 inches Hole Condition: Poor

KB to GR/CF: 10.00 ft

**Serial #: 8352 Outside**

Press @ RunDepth: 64.89 psig @ 3529.00 ft (KB)

Capacity: 8000.00 psig

Start Date: 2013.02.01

End Date:

2013.02.01

Last Calib.:

2013.02.01

Start Time: 00:03:33

End Time:

08:45:13

Time On Btm:

2013.02.01 @ 02:36:28

Time Off Btm:

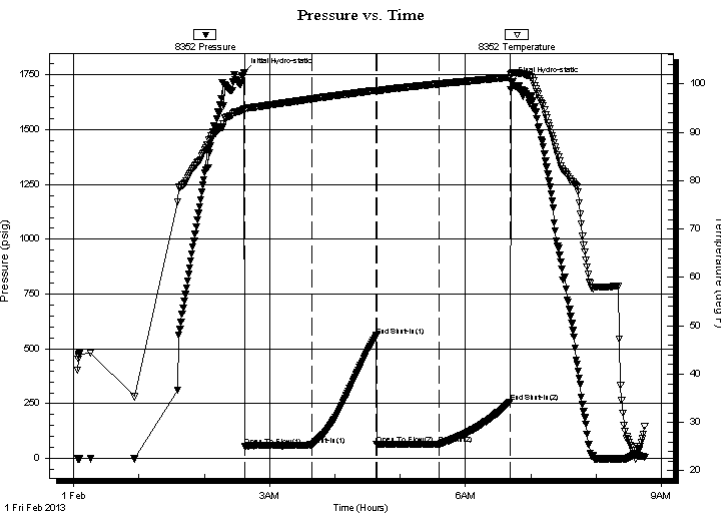
2013.02.01 @ 06:41:58

**TEST COMMENT:** IF:Weak to fair blow . 4 - 5" in diesel.

IS:No blow .

Weak blow . 1/4".

FS:No blow .



## PRESSURE SUMMARY

Time (Min.)	Pressure (psig)	Temp (deg F)	Annotation
0	1761.22	94.87	Initial Hydro-static
1	53.66	94.68	Open To Flow (1)
62	60.46	96.89	Shut-In(1)
122	559.90	98.69	End Shut-In(1)
122	64.35	98.50	Open To Flow (2)
180	64.89	100.03	Shut-In(2)
244	256.16	101.40	End Shut-In(2)
246	1717.82	102.14	Final Hydro-static

## Recovery

Length (ft)	Description	Volume (bbl)
95.00	Mud w / oil specs	0.57

\* Recovery from multiple tests

## Gas Rates

	Choke (inches)	Pressure (psig)	Gas Rate (Mcf/d)



**TRILOBITE  
TESTING, INC.**

# DRILL STEM TEST REPORT

**FLUID SUMMARY**

Novy Oil & Gas Inc.

**17-22s-8w Reno Ks.**

P.O.Box 559  
Goddard Ks.67052

**Zwick #1**

Job Ticket: 50838

**DST#: 2**

ATTN: Mac Armstrong

Test Start: 2013.02.01 @ 00:03:28

## Mud and Cushion Information

Mud Type: Gel Chem

Cushion Type:

Oil API:

deg API

Mud Weight: 0.00 lb/gal

Cushion Length:

ft

Water Salinity:

10000 ppm

Viscosity: 61.00 sec/qt

Cushion Volume:

bbbl

Water Loss: 9.19 in<sup>3</sup>

Gas Cushion Type:

Resistivity: 0.00 ohm.m

Gas Cushion Pressure:

psig

Salinity: 10000.00 ppm

Filter Cake: 0.20 inches

## Recovery Information

Recovery Table

Length ft	Description	Volume bbl
95.00	Mud w / oil specs	0.567

Total Length: 95.00 ft      Total Volume: 0.567 bbl

Num Fluid Samples: 0

Num Gas Bombs: 0

Serial #: none

Laboratory Name:

Laboratory Location:

Recovery Comments: Pease e mail pdf to Mike Novy & Mac A

# Pressure vs. Time

