



**TRILOBITE
TESTING, INC.**

DRILL STEM TEST REPORT

Berexco, LLC.

27-27s-24w Ford Co. KS

2020 N. Bramblewood
Wichita, KS 67206-1094

Melia 1-27

Job Ticket: 52320

DST#: 3

ATTN: Ed Grieves Evan May

Test Start: 2013.05.24 @ 23:47:56

GENERAL INFORMATION:

Formation: **Mississippi**

Deviated: No Whipstock: 0.00 ft (KB)

Time Tool Opened: 02:52:26

Time Test Ended: 10:32:26

Test Type: Conventional Bottom Hole (Initial)

Tester: Chris Staats

Unit No: 47

Interval: 5096.00 ft (KB) To 5110.00 ft (KB) (TVD)

Reference Elevations: 2544.00 ft (KB)

Total Depth: 5110.00 ft (KB) (TVD)

2531.00 ft (CF)

Hole Diameter: 7.88 inches Hole Condition: Fair

KB to GR/CF: 13.00 ft

Serial #: 8676

Press @ RunDepth: 155.89 psig @ ft (KB)

Capacity: 8000.00 psig

Start Date: 2013.05.24 End Date: 2013.05.25

Last Calib.: 2013.05.25

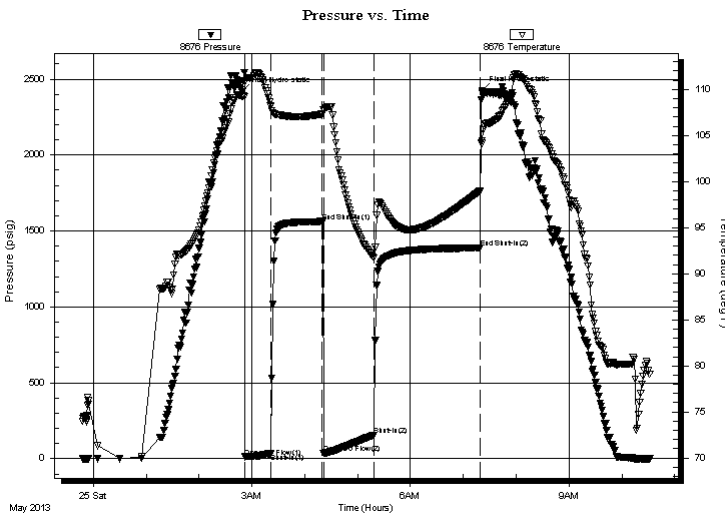
Start Time: 23:48:01 End Time: 10:32:26

Time On Btm: 2013.05.25 @ 02:48:56

Time Off Btm: 2013.05.25 @ 07:21:11

TEST COMMENT: IF: Strong blow BOB 30 sec
IS: Strong blow back BOB 20 sec
FF: Strong blow BOB
FS: Strong blow back GTS

PRESSURE SUMMARY



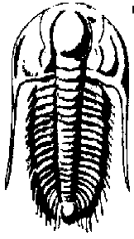
Time (Min.)	Pressure (psig)	Temp (deg F)	Annotation
0	2420.27	109.27	Initial Hydro-static
4	12.29	110.83	Open To Flow (1)
33	32.89	108.24	Shut-In(1)
90	1562.58	107.32	End Shut-In(1)
93	33.54	107.75	Open To Flow (2)
150	155.89	91.70	Shut-In(2)
270	1388.81	98.95	End Shut-In(2)
273	2422.67	104.17	Final Hydro-static

Recovery

Length (ft)	Description	Volume (bbl)
60.00	M,W 10% mud 90% water	0.30

Gas Rates

	Choke (inches)	Pressure (psig)	Gas Rate (Mcf/d)



**TRILOBITE
TESTING, INC.**

DRILL STEM TEST REPORT

FLUID SUMMARY

Berexco, LLC.

27-27s-24w Ford Co. KS

2020 N. Bramblewood
Wichita, KS 67206-1094

Melia 1-27

Job Ticket: 52320

DST#: 3

ATTN: Ed Grieves Evan May

Test Start: 2013.05.24 @ 23:47:56

Mud and Cushion Information

Mud Type: Gel Chem

Cushion Type:

Oil API:

deg API

Mud Weight: 9.00 lb/gal

Cushion Length:

ft

Water Salinity:

ppm

Viscosity: 63.00 sec/qt

Cushion Volume:

bbbl

Water Loss: 9.98 in³

Gas Cushion Type:

Resistivity: 0.00 ohm.m

Gas Cushion Pressure:

psig

Salinity: 6900.00 ppm

Filter Cake: 0.00 inches

Recovery Information

Recovery Table

Length ft	Description	Volume bbbl
60.00	M,W 10%mud 90% water	0.295

Total Length: 60.00 ft Total Volume: 0.295 bbl

Num Fluid Samples: 0

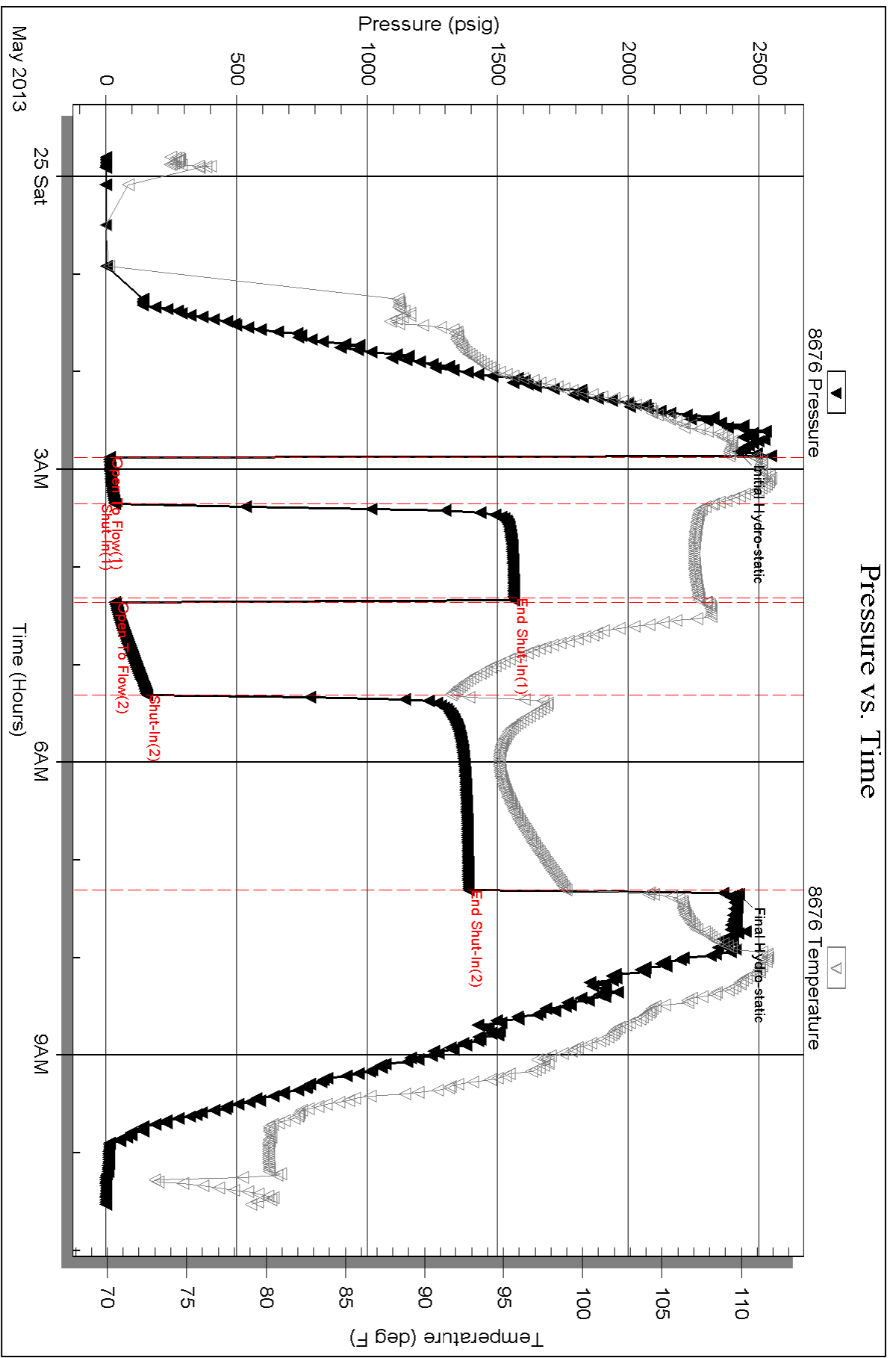
Num Gas Bombs: 0

Serial #:

Laboratory Name:

Laboratory Location:

Recovery Comments:



Serial #: 6773

Outside Berexco, LLC.

Melia 1-27

DST Test Number: 3

