

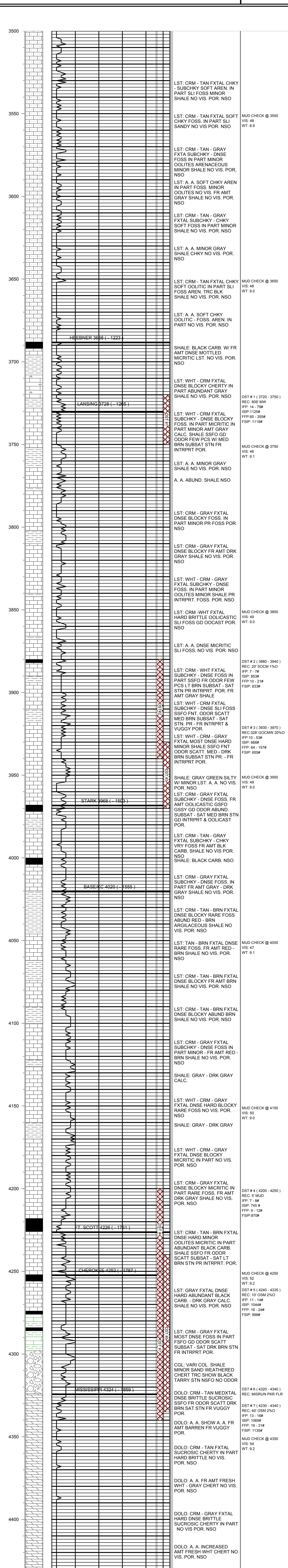
KEVIN L. KESSLER
CONSULTING PETROLEUM GEOLOGIST
 (316) 522-7338

OPERATOR : MULL DRILLING COMPANY, INC.		ELEVATION
LEASE : GARVEY 'C'	WELL # : 1 - 18	KB : 2465
LOCATION : 2228' FNL & 2091' FWL		GL : 2460
SEC: 18	TWP : 15 S	RGE : 26 W
COUNTY : GOVE		STATE : KANSAS
CONTRACTOR : WW DRILLING RIG # 10		CASING RECORD
COMM: 03 / 20 / 2013	COMP : 03 / 28 / 2013	SURFACE :
RTD : 4440	LOG TD : 4440	8 5/8" @ 221'
SAMPLES SAVED FROM : 3500	TO: RTD	PRODUCTION :
GEOLOGICAL SUPERVISION FROM : 3500	TO : RTD	5 1/2" @ 4440'
MUD UP : 3400	TYPE MUD : CHEMICAL	ELECTRICAL SURVEYS:

FORMATION	TOP	LOG	DATUM	TOP	SAMPLE	DATUM	STRUCT. COMP.
HEEBNER	3688		- 1223	3688		- 1223	- 07
LANSING	3728		- 1265	3728		- 1265	- 06
STARK	3968		- 1503	3968		- 1503	- 11
BASE/ KC	4020		- 1555	4020		- 1555	- 08
FORT SCOTT	4226		- 1761	4226		- 1761	- 18
CHEROKEE	4252		- 1787	4252		- 1787	- 19
MISSISSIPPI	4324		- 1859	4324		- 1859	- 23

REFERENCE WELL FOR STRUCTURAL COMPARISON :

AMERICAN WARRIOR #5 GARVEY 'L' SEC 18 - T 15 S - R 26 W GOVE COUNTY KANSAS



RTD = 4440 LTD = 4440

COMMENTS:

**PRODUCTION CASING WAS SET TO FURTHER
EVALUATE THE POTENTIAL PRODUCTIVITY OF THIS WELL**

KEVIN L. KESSLER