



**TRILOBITE
TESTING, INC.**

DRILL STEM TEST REPORT

Berexco LLC

23-26-22 Ford co

2020 Bramblewood
Wichita KS 67206

Tasset # 1-23 X

Job Ticket: 47505

DST#: 1

ATTN: Evan Mayhew / Ed Grie

Test Start: 2013.06.19 @ 09:27:33

GENERAL INFORMATION:

Formation: **Marm, Altomont, Pawne**

Deviated: No Whipstock: ft (KB)

Time Tool Opened: 14:26:03

Time Test Ended: 21:39:33

Test Type: Conventional Bottom Hole (Initial)

Tester: Chris Staats

Unit No: 47

Interval: 4685.00 ft (KB) To 4770.00 ft (KB) (TVD)

Reference Elevations: 2541.00 ft (KB)

Total Depth: 4770.00 ft (KB) (TVD)

2531.00 ft (CF)

Hole Diameter: 7.88 inches Hole Condition: Fair

KB to GR/CF: 10.00 ft

Serial #: 8676 Outside

Press @ Run Depth: 125.80 psig @ 4686.00 ft (KB)

Capacity: 8000.00 psig

Start Date: 2013.06.19

End Date: 2013.06.19

Last Calib.: 2013.06.19

Start Time: 09:27:38

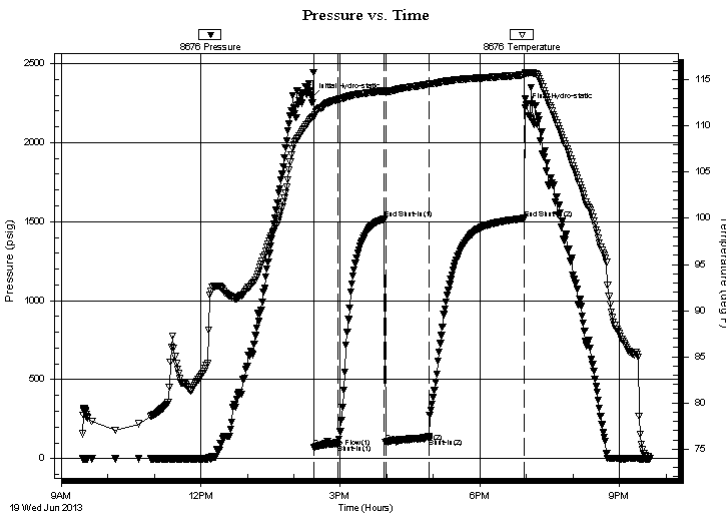
End Time: 21:39:33

Time On Btm: 2013.06.19 @ 14:23:18

Time Off Btm: 2013.06.19 @ 18:58:33

TEST COMMENT: IF: Fair blow 41/4"
IS: No blow back
FF: No blow
FS: No blow back

PRESSURE SUMMARY



| Time (Min.) | Pressure (psig) | Temp (deg F) | Annotation |
|-------------|-----------------|--------------|----------------------|
| 0 | 2285.48 | 110.88 | Initial Hydro-static |
| 3 | 70.77 | 110.91 | Open To Flow (1) |
| 34 | 92.08 | 112.88 | Shut-In(1) |
| 93 | 1516.87 | 113.76 | End Shut-In(1) |
| 96 | 105.14 | 113.70 | Open To Flow (2) |
| 151 | 125.80 | 114.49 | Shut-In(2) |
| 274 | 1520.39 | 115.54 | End Shut-In(2) |
| 276 | 2223.94 | 115.67 | Final Hydro-static |

Recovery

| Length (ft) | Description | Volume (bbl) |
|-------------|-------------|--------------|
| 180.00 | MUD 100% | 0.89 |
| | | |
| | | |
| | | |
| | | |

Gas Rates

| Choke (inches) | Pressure (psig) | Gas Rate (Mcf/d) |
|----------------|-----------------|------------------|
| | | |



**TRILOBITE
TESTING, INC.**

DRILL STEM TEST REPORT

FLUID SUMMARY

Berexco LLC

23-26-22 Ford co

2020 Bramblewood
Wichita KS 67206

Tasset # 1-23 X

Job Ticket: 47505

DST#: 1

ATTN: Evan Mayhew / Ed Grie

Test Start: 2013.06.19 @ 09:27:33

Mud and Cushion Information

Mud Type: Gel Chem

Cushion Type:

Oil API:

deg API

Mud Weight: 9.00 lb/gal

Cushion Length:

ft

Water Salinity:

ppm

Viscosity: 68.00 sec/qt

Cushion Volume:

bbbl

Water Loss: 10.78 in³

Gas Cushion Type:

Resistivity: 0.00 ohm.m

Gas Cushion Pressure:

psig

Salinity: 5700.00 ppm

Filter Cake: 0.00 inches

Recovery Information

Recovery Table

| Length ft | Description | Volume bbbl |
|--------------|-------------|----------------|
| 180.00 | MUD 100% | 0.885 |

Total Length: 180.00 ft Total Volume: 0.885 bbl

Num Fluid Samples: 0

Num Gas Bombs: 0

Serial #:

Laboratory Name:

Laboratory Location:

Recovery Comments:

