



**TRILOBITE TESTING, INC.**

# DRILL STEM TEST REPORT

Russell Oil Inc.  
 P.O. Box 8050  
 Edmond, OK 73083  
 ATTN: Kitt Noah

**32 - 15S - 34W**  
**Edwards Trust A 1-32**  
 Job Ticket: 50734 **DST#: 1**  
 Test Start: 2013.04.24 @ 00:26:00

## GENERAL INFORMATION:

Formation: **LKC "E-F"**  
 Deviated: No Whipstock: ft (KB)  
 Test Type: Conventional Bottom Hole (Initial)  
 Time Tool Opened: 03:01:30 Tester: Ryan Nichols  
 Time Test Ended: 07:54:30 Unit No: 55  
 Interval: **4002.00 ft (KB) To 4044.00 ft (KB) (TVD)** Reference Elevations: 3053.00 ft (KB)  
 Total Depth: 4044.00 ft (KB) (TVD) 3041.00 ft (CF)  
 Hole Diameter: 7.88 inches Hole Condition: Good KB to GR/CF: 12.00 ft

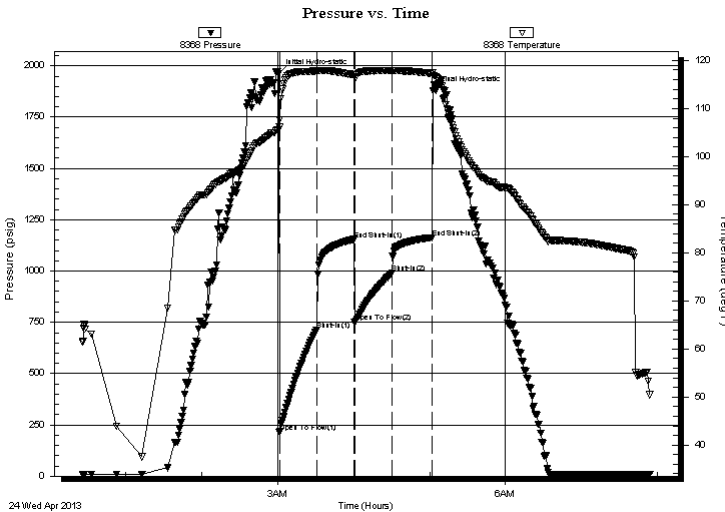
## Serial #: 8368

Outside

Press @ Run Depth: 989.64 psig @ 4003.00 ft (KB) Capacity: 8000.00 psig  
 Start Date: 2013.04.24 End Date: 2013.04.24 Last Calib.: 2013.04.25  
 Start Time: 00:26:05 End Time: 07:54:29 Time On Btm: 2013.04.24 @ 03:00:45  
 Time Off Btm: 2013.04.24 @ 05:02:45

TEST COMMENT: 30 IF - Bob in 1 min  
 30 ISI - No return  
 30 FF - Bob in 1 min  
 30 FSI - No return

## PRESSURE SUMMARY



Time (Min.)	Pressure (psig)	Temp (deg F)	Annotation
0	1963.87	105.63	Initial Hydro-static
1	212.37	106.10	Open To Flow (1)
30	711.64	117.78	Shut-In(1)
60	1153.54	117.02	End Shut-In(1)
60	748.86	116.64	Open To Flow (2)
90	989.64	117.82	Shut-In(2)
122	1163.44	117.33	End Shut-In(2)
122	1878.98	117.47	Final Hydro-static

## Recovery

Length (ft)	Description	Volume (bbl)
1999.00	MCW - 5%M - 95%W	25.22
140.00	WCM - 40%W - 60%M	1.96

## Gas Rates

Choke (inches)	Pressure (psig)	Gas Rate (Mcf/d)



**TRILOBITE  
TESTING, INC.**

# DRILL STEM TEST REPORT

## FLUID SUMMARY

Russell Oil Inc.

**32 - 15S - 34W**

P.O. Box 8050  
Edmond, OK 73083

**Edwards Trust A 1-32**

Job Ticket: 50734

**DST#: 1**

ATTN: Kitt Noah

Test Start: 2013.04.24 @ 00:26:00

### Mud and Cushion Information

Mud Type: Gel Chem

Cushion Type:

Oil API:

deg API

Mud Weight: 9.00 lb/gal

Cushion Length:

ft

Water Salinity:

3700 ppm

Viscosity: 50.00 sec/qt

Cushion Volume:

bbbl

Water Loss: 8.79 in<sup>3</sup>

Gas Cushion Type:

Resistivity: ohm.m

Gas Cushion Pressure:

psig

Salinity: 3500.00 ppm

Filter Cake: 1.00 inches

### Recovery Information

Recovery Table

Length ft	Description	Volume bbbl
1999.00	MCW - 5%M - 95%W	25.217
140.00	WCM - 40%W - 60%M	1.964

Total Length: 2139.00 ft      Total Volume: 27.181 bbl

Num Fluid Samples: 0

Num Gas Bombs: 0

Serial #:

Laboratory Name:

Laboratory Location:

Recovery Comments: RW = .421 @ 29 DEG F

Chlorides = 3700 ppm

