



TRILOBITE TESTING, INC.

DRILL STEM TEST REPORT

Russell Oil Inc.
 P.O. Box 8050
 Edmond, OK 73083
 ATTN: Kitt Noah

32 - 15S - 34W
Edwards Trust A 1-32
 Job Ticket: 53203 **DST#: 3**
 Test Start: 2013.04.27 @ 11:44:21

GENERAL INFORMATION:

Formation: **Marmaton "C"**
 Deviated: No Whipstock: ft (KB)
 Time Tool Opened: 13:41:51
 Time Test Ended: 21:22:36
 Interval: **4366.00 ft (KB) To 4400.00 ft (KB) (TVD)**
 Total Depth: 4400.00 ft (KB) (TVD)
 Hole Diameter: 7.88 inches Hole Condition: Good
 Test Type: Conventional Bottom Hole (Reset)
 Tester: Shane McBride
 Unit No: 55
 Reference Elevations: 3053.00 ft (KB)
 3041.00 ft (CF)
 KB to GR/CF: 12.00 ft

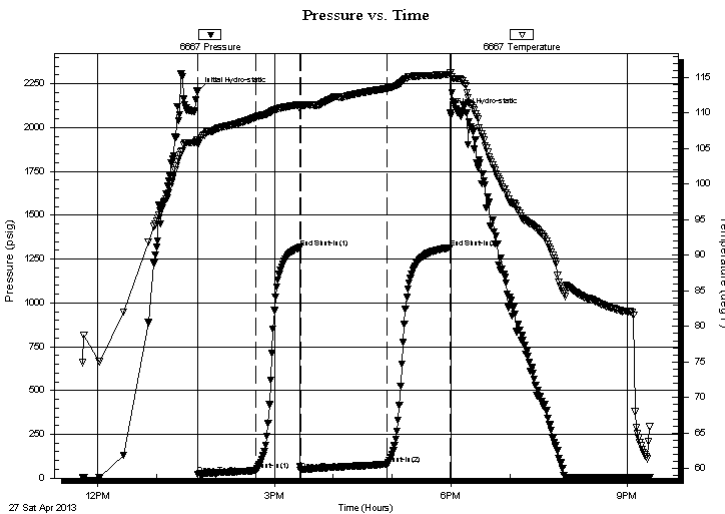
Serial #: 6667

Inside

Press @ Run Depth: 78.45 psig @ 4367.00 ft (KB) Capacity: 8000.00 psig
 Start Date: 2013.04.27 End Date: 2013.04.27 Last Calib.: 2013.04.27
 Start Time: 11:44:36 End Time: 21:22:36 Time On Btm: 2013.04.27 @ 13:41:36
 Time Off Btm: 2013.04.27 @ 17:59:21

TEST COMMENT: IF-Fair blow built to 5 1/2 in.
 IS-Dead no blow
 FF-B.O.B. in 75 in.
 FS-Dead no blow

PRESSURE SUMMARY



| Time (Min.) | Pressure (psig) | Temp (deg F) | Annotation |
|-------------|-----------------|--------------|----------------------|
| 0 | 2205.73 | 106.28 | Initial Hydro-static |
| 1 | 21.45 | 105.77 | Open To Flow (1) |
| 60 | 43.19 | 109.42 | Shut-In(1) |
| 105 | 1315.96 | 111.19 | End Shut-In(1) |
| 105 | 46.06 | 110.90 | Open To Flow (2) |
| 194 | 78.45 | 113.46 | Shut-In(2) |
| 257 | 1314.88 | 115.41 | End Shut-In(2) |
| 258 | 2087.07 | 115.70 | Final Hydro-static |

Recovery

| Length (ft) | Description | Volume (bbl) |
|-------------|----------------|--------------|
| 60.00 | 20%M 30%O 50%G | 0.30 |
| 60.00 | 5%M 15%G 80%O | 0.30 |
| 30.00 | 20%G 80%O | 0.15 |
| 0.00 | 402 G.I.P. | 0.00 |
| | | |
| | | |

* Recovery from multiple tests

Gas Rates

| Choke (inches) | Pressure (psig) | Gas Rate (Mcf/d) |
|----------------|-----------------|------------------|
| | | |



**TRILOBITE
TESTING, INC.**

DRILL STEM TEST REPORT

FLUID SUMMARY

Russell Oil Inc.

32 - 15S - 34W

P.O. Box 8050
Edmond, OK 73083

Edwards Trust A 1-32

Job Ticket: 53203

DST#: 3

ATTN: Kitt Noah

Test Start: 2013.04.27 @ 11:44:21

Mud and Cushion Information

Mud Type: Gel Chem

Cushion Type:

Oil API:

deg API

Mud Weight: 9.00 lb/gal

Cushion Length:

ft

Water Salinity:

ppm

Viscosity: 50.00 sec/qt

Cushion Volume:

bbbl

Water Loss: 7.20 in³

Gas Cushion Type:

Resistivity: ohm.m

Gas Cushion Pressure:

psig

Salinity: 4400.00 ppm

Filter Cake: 1.00 inches

Recovery Information

Recovery Table

| Length ft | Description | Volume bbbl |
|--------------|----------------|----------------|
| 60.00 | 20%M 30%O 50%G | 0.295 |
| 60.00 | 5%M 15%G 80%O | 0.295 |
| 30.00 | 20%G 80%O | 0.148 |
| 0.00 | 402 G.I.P. | 0.000 |

Total Length: 150.00 ft

Total Volume: 0.738 bbl

Num Fluid Samples: 0

Num Gas Bombs: 0

Serial #:

Laboratory Name:

Laboratory Location:

Recovery Comments:

