



**TRILOBITE
TESTING, INC.**

DRILL STEM TEST REPORT

Shakespeare Oil Co., Inc.

S13-16-34 Scott, KS

202 W. Main St
Salem, IL 62881

Unruh 1-13

Job Ticket: 51767

DST#: 1

ATTN: Steve Davis

Test Start: 2013.06.25 @ 17:00:00

GENERAL INFORMATION:

Formation: **LKC 'H, I'**
 Deviated: No Whipstock: ft (KB)
 Test Type: Conventional Bottom Hole (Initial)
 Time Tool Opened: 19:07:50
 Tester: Chuck Smith
 Time Test Ended: 00:38:50
 Unit No: 62
 Interval: **4205.00 ft (KB) To 4272.00 ft (KB) (TVD)**
 Reference Elevations: 3113.00 ft (KB)
 Total Depth: 4272.00 ft (KB) (TVD)
 3106.00 ft (CF)
 Hole Diameter: 7.88 inches
 Hole Condition: Good
 KB to GR/CF: 7.00 ft

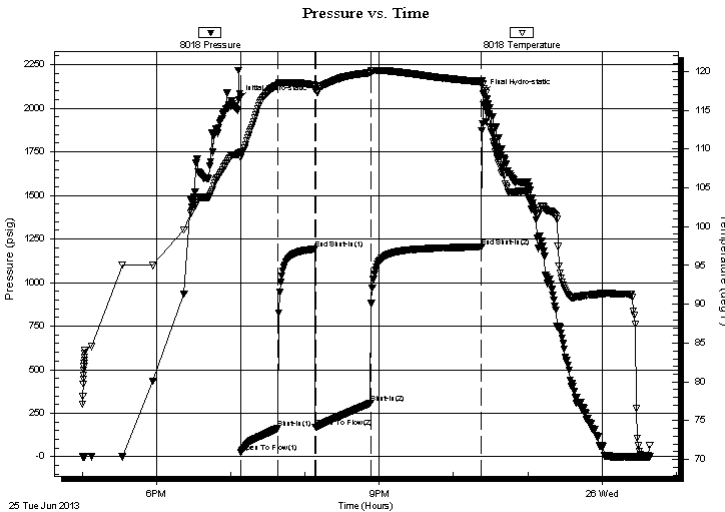
Serial #: 8018

Inside

Press @ Run Depth: 307.27 psig @ 4207.00 ft (KB) Capacity: 8000.00 psig
 Start Date: 2013.06.25 End Date: 2013.06.26 Last Calib.: 2013.06.26
 Start Time: 17:00:02 End Time: 00:38:50 Time On Btm: 2013.06.25 @ 19:06:10
 Time Off Btm: 2013.06.25 @ 22:23:39

TEST COMMENT: B.O.B. @ 16 min.
 No return.
 B.O.B. @ 18 min.
 No return.

PRESSURE SUMMARY



| Time (Min.) | Pressure (psig) | Temp (deg F) | Annotation |
|-------------|-----------------|--------------|----------------------|
| 0 | 2050.87 | 109.30 | Initial Hydro-static |
| 2 | 25.59 | 108.87 | Open To Flow (1) |
| 32 | 163.68 | 118.30 | Shut-In(1) |
| 62 | 1193.17 | 118.20 | End Shut-In(1) |
| 62 | 167.74 | 117.62 | Open To Flow (2) |
| 107 | 307.27 | 119.82 | Shut-In(2) |
| 197 | 1204.63 | 118.67 | End Shut-In(2) |
| 198 | 2081.81 | 118.28 | Final Hydro-static |

Recovery

| Length (ft) | Description | Volume (bbl) |
|-------------|---------------------------------|--------------|
| 0.00 | RW: .150 @ 68 Degrees F = 52000 | 0.00 |
| 492.00 | W 100w | 5.55 |
| 156.00 | WM20w 80m | 2.19 |
| 0.00 | Oil spots in tool. | 0.00 |
| | | |
| | | |

Gas Rates

| Choke (inches) | Pressure (psig) | Gas Rate (Mcf/d) |
|----------------|-----------------|------------------|
| | | |



**TRILOBITE
TESTING, INC.**

DRILL STEM TEST REPORT

FLUID SUMMARY

Shakespeare Oil Co., Inc.

S13-16-34 Scott, KS

202 W. Main St
Salem, IL 62881

Unruh 1-13

Job Ticket: 51767

DST#: 1

ATTN: Steve Davis

Test Start: 2013.06.25 @ 17:00:00

Mud and Cushion Information

Mud Type: Gel Chem

Cushion Type:

Oil API:

deg API

Mud Weight: 9.00 lb/gal

Cushion Length:

ft

Water Salinity:

52000 ppm

Viscosity: 54.00 sec/qt

Cushion Volume:

bbbl

Water Loss: 8.77 in³

Gas Cushion Type:

Resistivity: ohm.m

Gas Cushion Pressure:

psig

Salinity: 6000.00 ppm

Filter Cake: 1.00 inches

Recovery Information

Recovery Table

| Length ft | Description | Volume bbbl |
|--------------|---------------------------------|----------------|
| 0.00 | RW: .150 @ 68 Degrees F = 52000 | 0.000 |
| 492.00 | W 100w | 5.553 |
| 156.00 | WM 20w 80m | 2.188 |
| 0.00 | Oil spots in tool. | 0.000 |

Total Length: 648.00 ft

Total Volume: 7.741 bbl

Num Fluid Samples: 0

Num Gas Bombs: 0

Serial #:

Laboratory Name:

Laboratory Location:

Recovery Comments:

Serial #: 8018

Inside

Shakespeare Oil Co., Inc.

Unruh 1-13

DST Test Number: 1

