



**TRILOBITE
TESTING, INC.**

DRILL STEM TEST REPORT

Berexco LLC.
2020 N. Bramblewood
Wichita KS 67206
ATTN: David G.

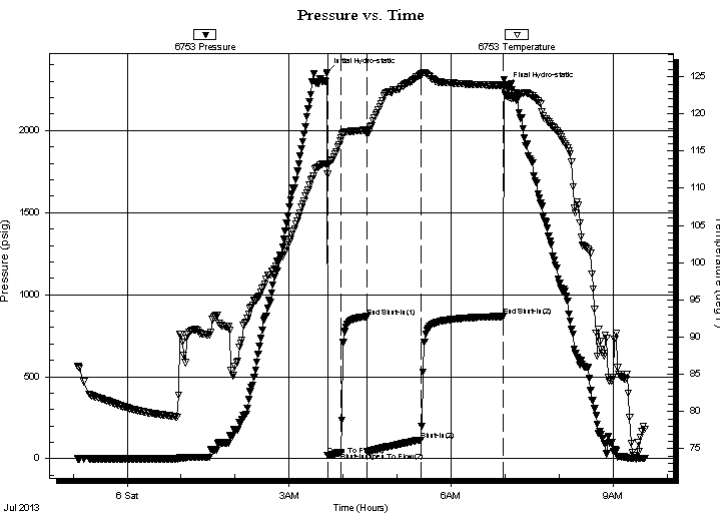
29-23s-23w, Hodgeman, KS
Bradford #1-29
Job Ticket: 54283 **DST#: 2**
Test Start: 2013.07.05 @ 23:05:00

GENERAL INFORMATION:

Formation: **Miss**
Deviated: No Whipstock: ft (KB) Test Type: Conventional Bottom Hole (Reset)
Time Tool Opened: 03:42:30 Tester: Brett Dickinson
Time Test Ended: 09:35:30 Unit No: 59
Interval: 4704.00 ft (KB) To 4714.00 ft (KB) (TVD) Reference Elevations: 2434.00 ft (KB)
Total Depth: 4714.00 ft (KB) (TVD) 2422.00 ft (CF)
Hole Diameter: 7.88 inches Hole Condition: Fair KB to GR/CF: 12.00 ft

Serial #: 6753 Inside
Press @ Run Depth: 113.95 psig @ 4705.00 ft (KB) Capacity: 8000.00 psig
Start Date: 2013.07.05 End Date: 2013.07.06 Last Calib.: 2013.07.06
Start Time: 23:05:05 End Time: 09:35:30 Time On Btm: 2013.07.06 @ 03:41:30
Time Off Btm: 2013.07.06 @ 07:00:30

TEST COMMENT: IF-1.5in blow
ISI-No blow
FF-3.75in blow
FSI-No blow



PRESSURE SUMMARY

Time (Min.)	Pressure (psig)	Temp (deg F)	Annotation
0	2354.25	113.14	Initial Hydro-static
1	19.53	111.88	Open To Flow (1)
16	38.19	116.80	Shut-In(1)
45	866.72	117.81	End Shut-In(1)
45	42.41	117.38	Open To Flow (2)
105	113.95	125.23	Shut-In(2)
196	867.81	123.84	End Shut-In(2)
199	2269.77	122.45	Final Hydro-static

Recovery

Length (ft)	Description	Volume (bbl)
185.00	VSMCW 85%W 5%M	0.91
30.00	GO 20%G 80%O	0.15

* Recovery from multiple tests

Gas Rates

Choke (inches)	Pressure (psig)	Gas Rate (Mcf/d)



**TRILOBITE
TESTING, INC.**

DRILL STEM TEST REPORT

FLUID SUMMARY

Berexco LLC.

29-23s-23w, Hodgeman, KS

2020 N. Bramblewood
Wichita KS 67206

Bradford #1-29

Job Ticket: 54283

DST#: 2

ATTN: David G.

Test Start: 2013.07.05 @ 23:05:00

Mud and Cushion Information

Mud Type: Gel Chem

Cushion Type:

Oil API:

deg API

Mud Weight: 9.00 lb/gal

Cushion Length:

ft

Water Salinity:

19000 ppm

Viscosity: 51.00 sec/qt

Cushion Volume:

bbf

Water Loss: 7.19 in³

Gas Cushion Type:

Resistivity: ohm.m

Gas Cushion Pressure:

psig

Salinity: 3000.00 ppm

Filter Cake: inches

Recovery Information

Recovery Table

Length ft	Description	Volume bbf
185.00	VSMCW 85%W 5%M	0.910
30.00	GO 20%G 80%O	0.148

Total Length: 215.00 ft

Total Volume: 1.058 bbf

Num Fluid Samples: 0

Num Gas Bombs: 0

Serial #:

Laboratory Name:

Laboratory Location:

Recovery Comments:

Serial #: 6753

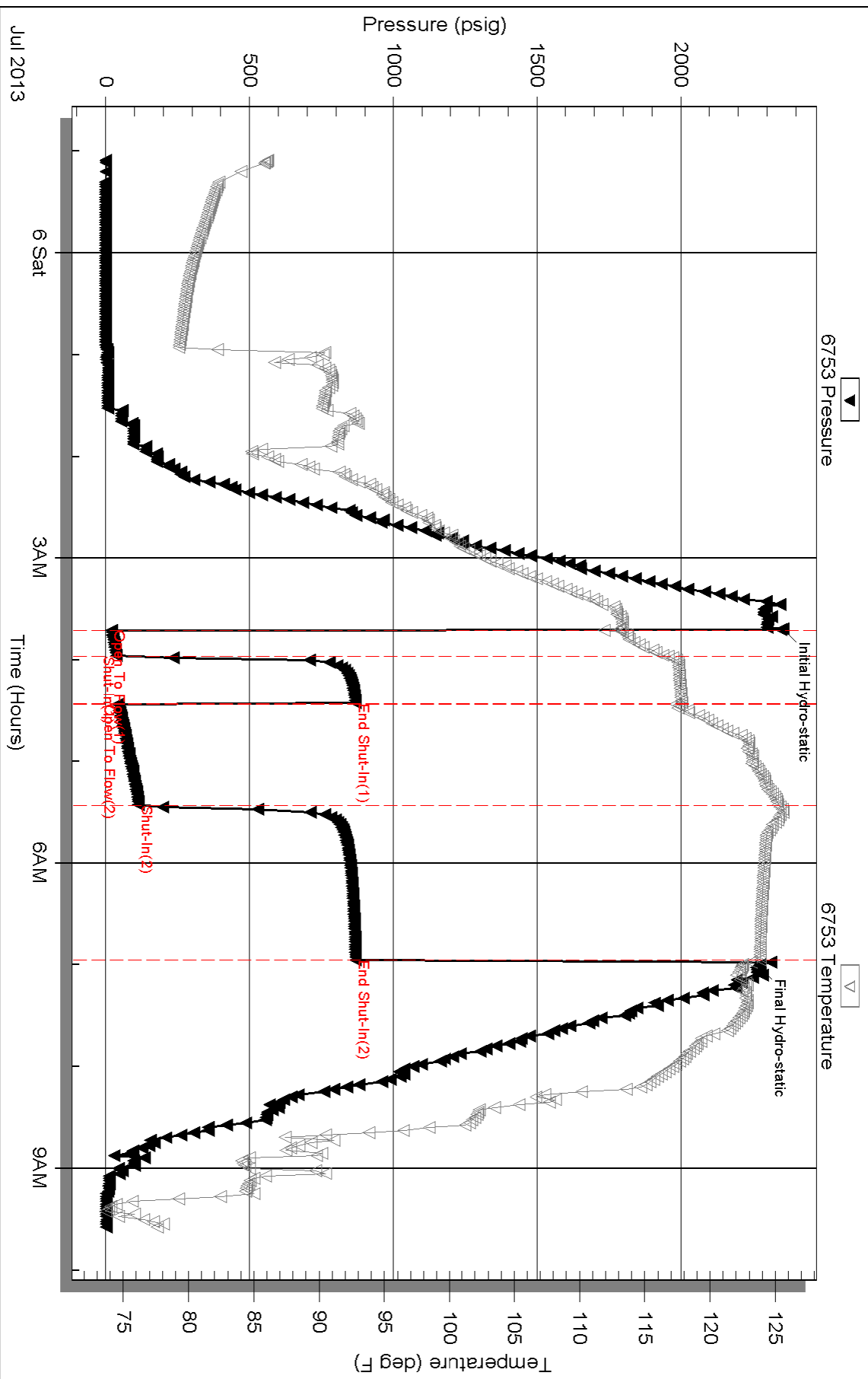
Inside

Berexco LLC.

Bradford #1-29

DST Test Number: 2

Pressure vs. Time



Serial #: 8166

Outside Berexco LLC.

Bradford #1-29

DST Test Number: 2

