



TRILOBITE TESTING, INC.

DRILL STEM TEST REPORT

O'Brien Resources, LLC

21-14s-30w Gove Co, KS

PO BOX 6149
Shreveport LA, 71136

Swart 21 #1

Job Ticket: 53070

DST#: 1

ATTN: Sean Deenihan

Test Start: 2013.05.29 @ 17:40:00

GENERAL INFORMATION:

Formation: **Lansing D Zone**

Deviated: No Whipstock: ft (KB)

Time Tool Opened: 21:22:00

Time Test Ended: 01:38:30

Test Type: Conventional Bottom Hole (Initial)

Tester: Jace McKinney

Unit No: 46

Interval: 3921.00 ft (KB) To 3956.00 ft (KB) (TVD)

Reference Elevations: 2813.00 ft (KB)

Total Depth: 3956.00 ft (KB) (TVD)

2803.00 ft (CF)

Hole Diameter: 7.88 inches Hole Condition: Fair

KB to GR/CF: 10.00 ft

Serial #: 8675

Inside

Press @ Run Depth: 33.17 psig @ 3922.00 ft (KB)

Capacity: 8000.00 psig

Start Date: 2013.05.29

End Date: 2013.05.30

Last Calib.: 2013.05.30

Start Time: 17:40:15

End Time: 01:38:30

Time On Btm: 2013.05.29 @ 21:20:15

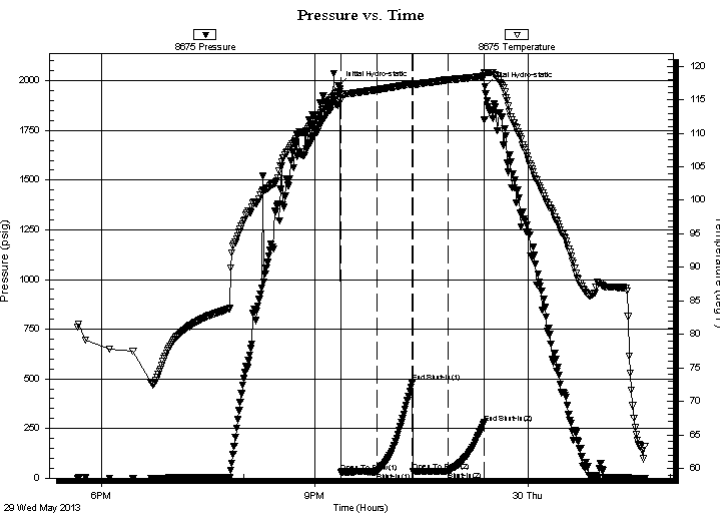
Time Off Btm: 2013.05.29 @ 23:23:45

TEST COMMENT: Built to 1/2" blow

No return blow

No blow

No return blow



PRESSURE SUMMARY

Time (Min.)	Pressure (psig)	Temp (deg F)	Annotation
0	1973.75	116.17	Initial Hydro-static
2	30.81	114.94	Open To Flow (1)
32	31.75	116.49	Shut-In(1)
63	483.14	117.37	End Shut-In(1)
63	33.19	117.12	Open To Flow (2)
93	33.17	117.99	Shut-In(2)
123	278.30	118.53	End Shut-In(2)
124	1973.01	119.06	Final Hydro-static

Recovery

Length (ft)	Description	Volume (bbl)
30.00	100% Mud with oil scum	0.42

Gas Rates

Choke (inches)	Pressure (psig)	Gas Rate (Mcf/d)



**TRILOBITE
TESTING, INC.**

DRILL STEM TEST REPORT

FLUID SUMMARY

O'Brien Resources, LLC

21-14s-30w Gove Co, KS

PO BOX 6149
Shreveport LA, 71136

Swart 21 #1

Job Ticket: 53070

DST#: 1

ATTN: Sean Deenihan

Test Start: 2013.05.29 @ 17:40:00

Mud and Cushion Information

Mud Type: Gel Chem

Cushion Type:

Oil API:

deg API

Mud Weight: 9.00 lb/gal

Cushion Length:

ft

Water Salinity:

ppm

Viscosity: 57.00 sec/qt

Cushion Volume:

bbbl

Water Loss: 7.99 in³

Gas Cushion Type:

Resistivity: ohm.m

Gas Cushion Pressure:

psig

Salinity: 800.00 ppm

Filter Cake: 1.00 inches

Recovery Information

Recovery Table

Length ft	Description	Volume bbl
30.00	100% Mud with oil scum	0.421

Total Length: 30.00 ft Total Volume: 0.421 bbl

Num Fluid Samples: 0

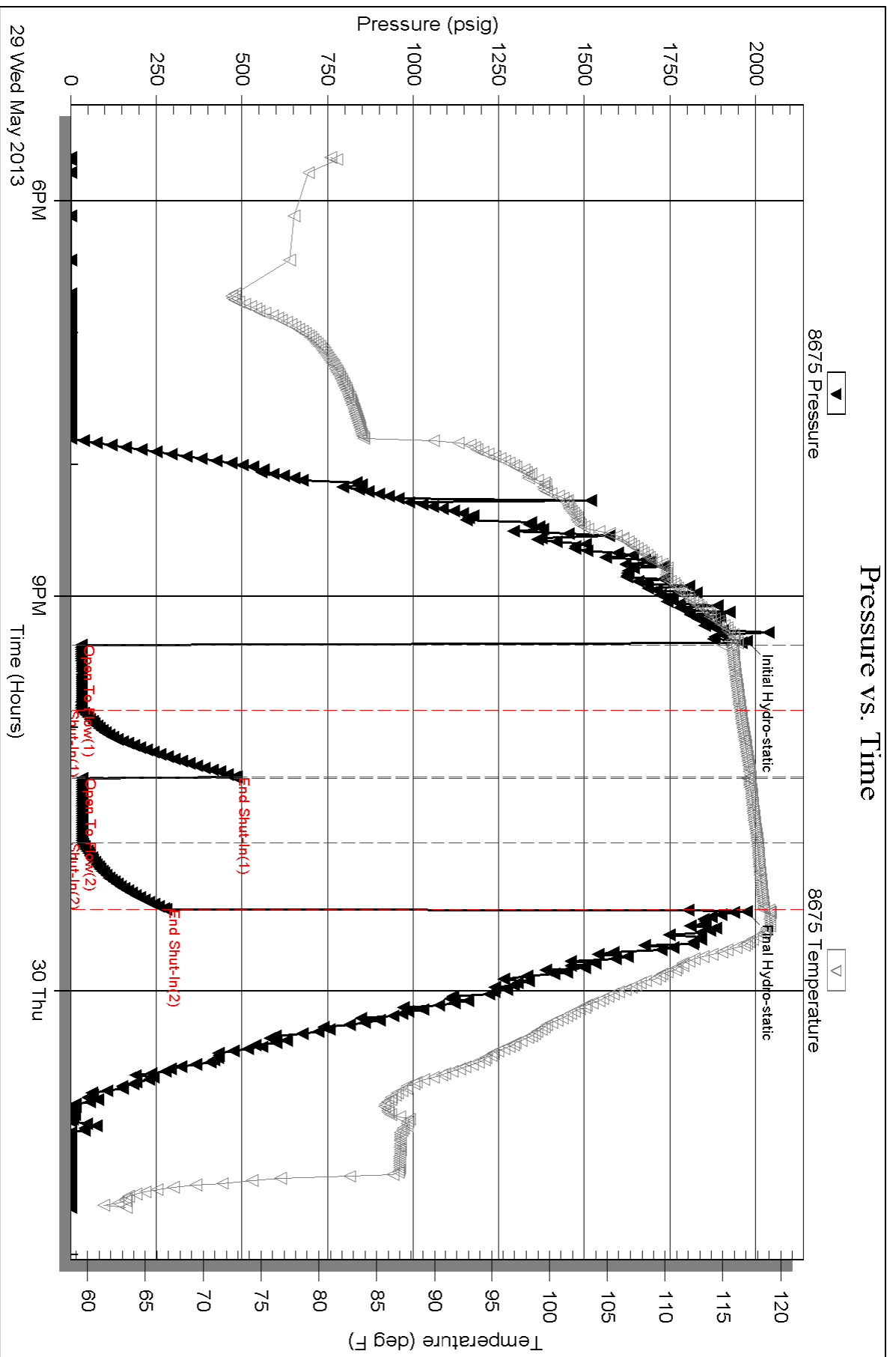
Num Gas Bombs: 0

Serial #:

Laboratory Name:

Laboratory Location:

Recovery Comments:





**TRILOBITE
TESTING, INC.**

DRILL STEM TEST REPORT

O'Brien Resources, LLC

21-14s-30w Gove Co, KS

PO BOX 6149
Shreveport LA, 71136

Swart 21 #1

Job Ticket: 53071

DST#: 2

ATTN: Sean Deenihan

Test Start: 2013.05.30 @ 19:45:00

GENERAL INFORMATION:

Formation: **Kansas City "H-I"**
 Deviated: No Whipstock: ft (KB)
 Test Type: Conventional Bottom Hole (Reset)
 Time Tool Opened: 21:47:30
 Tester: Jace McKinney
 Time Test Ended: 02:07:00
 Unit No: 46
 Interval: **4052.00 ft (KB) To 4122.00 ft (KB) (TVD)**
 Reference Elevations: 2813.00 ft (KB)
 Total Depth: 4122.00 ft (KB) (TVD)
 2803.00 ft (CF)
 Hole Diameter: 7.88 inches
 Hole Condition: Fair
 KB to GR/CF: 10.00 ft

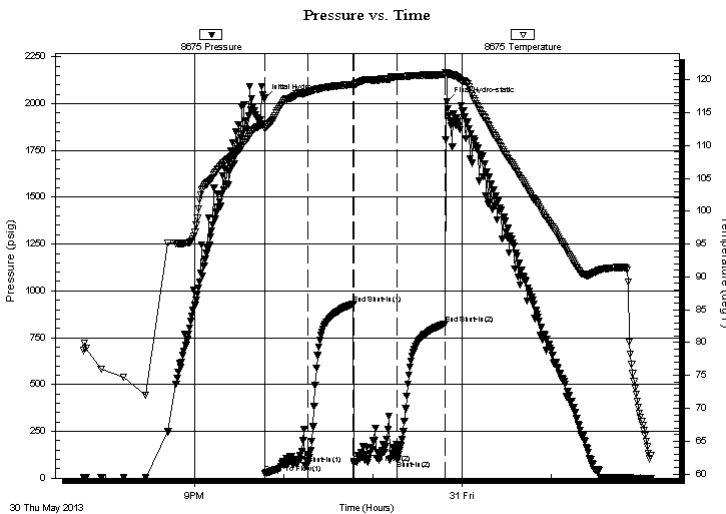
Serial #: 8675

Inside

Press @ Run Depth: 97.66 psig @ 4053.00 ft (KB) Capacity: 8000.00 psig
 Start Date: 2013.05.30 End Date: 2013.05.31 Last Calib.: 2013.05.31
 Start Time: 19:45:15 End Time: 02:07:00 Time On Btm: 2013.05.30 @ 21:47:00
 Time Off Btm: 2013.05.30 @ 23:50:00

TEST COMMENT: Built to 5/2" blow
 No return blow
 Built to 2" blow
 No return blow

PRESSURE SUMMARY



Time (Min.)	Pressure (psig)	Temp (deg F)	Annotation
0	2024.78	113.28	Initial Hydro-static
1	25.33	112.54	Open To Flow (1)
30	75.34	118.05	Shut-In(1)
60	930.38	119.31	End Shut-In(1)
61	78.29	118.97	Open To Flow (2)
90	97.66	120.43	Shut-In(2)
122	824.38	120.75	End Shut-In(2)
123	2009.40	120.90	Final Hydro-static

Recovery

Length (ft)	Description	Volume (bbl)
120.00	100% Mud	1.68

* Recovery from multiple tests

Gas Rates

Choke (inches)	Pressure (psig)	Gas Rate (Mcf/d)



**TRILOBITE
TESTING, INC.**

DRILL STEM TEST REPORT

FLUID SUMMARY

O'Brien Resources, LLC

21-14s-30w Gove Co, KS

PO BOX 6149
Shreveport LA, 71136

Swart 21 #1

Job Ticket: 53071

DST#: 2

ATTN: Sean Deenihan

Test Start: 2013.05.30 @ 19:45:00

Mud and Cushion Information

Mud Type: Gel Chem

Cushion Type:

Oil API:

deg API

Mud Weight: 9.00 lb/gal

Cushion Length:

ft

Water Salinity:

ppm

Viscosity: 49.00 sec/qt

Cushion Volume:

bbbl

Water Loss: 7.99 in³

Gas Cushion Type:

Resistivity: ohm.m

Gas Cushion Pressure:

psig

Salinity: 1000.00 ppm

Filter Cake: 1.00 inches

Recovery Information

Recovery Table

Length ft	Description	Volume bbl
120.00	100% Mud	1.683

Total Length: 120.00 ft Total Volume: 1.683 bbl

Num Fluid Samples: 0

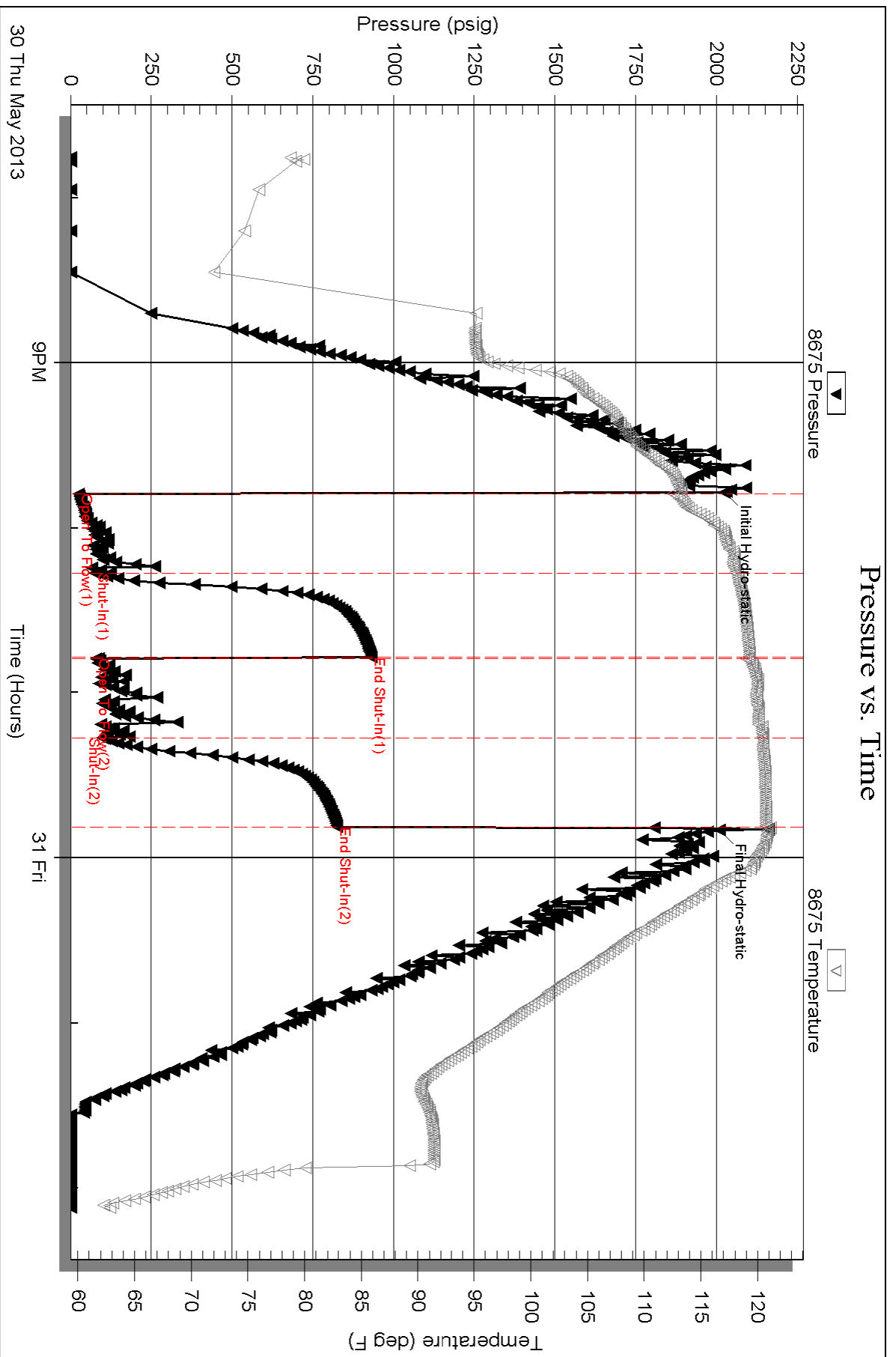
Num Gas Bombs: 0

Serial #:

Laboratory Name:

Laboratory Location:

Recovery Comments:





**TRILOBITE
TESTING, INC.**

DRILL STEM TEST REPORT

O'Brien Resources, LLC

21-14s-30w Gove Co, KS

PO BOX 6149
Shreveport LA, 71136

Swart 21 #1

Job Ticket: 52072

DST#: 3

ATTN: Sean Deenihan

Test Start: 2013.05.31 @ 11:00:00

GENERAL INFORMATION:

Formation: **Kansas City "I J K"**

Deviated: No Whipstock: ft (KB)

Time Tool Opened: 13:16:00

Time Test Ended: 17:20:15

Test Type: Conventional Bottom Hole (Reset)

Tester: Jace McKinney

Unit No: 46

Interval: 4090.00 ft (KB) To 4175.00 ft (KB) (TVD)

Reference Elevations: 2813.00 ft (KB)

Total Depth: 4175.00 ft (KB) (TVD)

2803.00 ft (CF)

Hole Diameter: 7.88 inches Hole Condition: Fair

KB to GR/CF: 10.00 ft

Serial #: 8675

Inside

Press @ Run Depth: 36.83 psig @ 4091.00 ft (KB)

Capacity: 8000.00 psig

Start Date: 2013.05.31

End Date:

2013.05.31

Last Calib.:

2013.05.31

Start Time: 11:00:15

End Time:

17:20:15

Time On Btm:

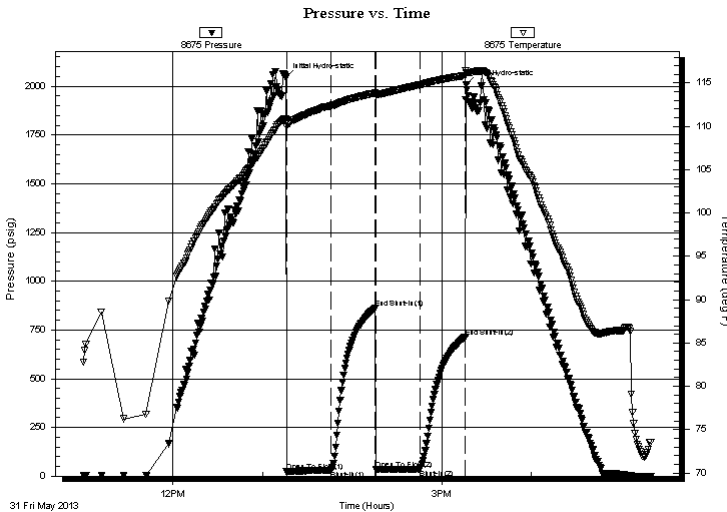
2013.05.31 @ 13:15:30

Time Off Btm:

2013.05.31 @ 15:16:30

TEST COMMENT: Built to 2" blow
No return blow
Weak surface blow
No return blow

PRESSURE SUMMARY



Time (Min.)	Pressure (psig)	Temp (deg F)	Annotation
0	2042.42	110.87	Initial Hydro-static
1	22.58	109.96	Open To Flow (1)
31	31.23	112.37	Shut-In(1)
60	860.39	113.85	End Shut-In(1)
61	33.57	113.59	Open To Flow (2)
90	36.83	114.79	Shut-In(2)
121	713.95	115.86	End Shut-In(2)
121	2008.21	116.19	Final Hydro-static

Recovery

Length (ft)	Description	Volume (bbl)
40.00	100% Mud with oil scum	0.56

Gas Rates

	Choke (inches)	Pressure (psig)	Gas Rate (Mcf/d)

* Recovery from multiple tests



**TRILOBITE
TESTING, INC.**

DRILL STEM TEST REPORT

FLUID SUMMARY

O'Brien Resources, LLC

21-14s-30w Gove Co, KS

PO BOX 6149
Shreveport LA, 71136

Swart 21 #1

Job Ticket: 52072

DST#: 3

ATTN: Sean Deenihan

Test Start: 2013.05.31 @ 11:00:00

Mud and Cushion Information

Mud Type: Gel Chem

Cushion Type:

Oil API:

deg API

Mud Weight: 9.00 lb/gal

Cushion Length: ft

Water Salinity: ppm

Viscosity: 66.00 sec/qt

Cushion Volume: bbl

Water Loss: 7.20 in³

Gas Cushion Type:

Resistivity: ohm.m

Gas Cushion Pressure: psig

Salinity: 1500.00 ppm

Filter Cake: 1.00 inches

Recovery Information

Recovery Table

Length ft	Description	Volume bbl
40.00	100% Mud with oil scum	0.561

Total Length: 40.00 ft Total Volume: 0.561 bbl

Num Fluid Samples: 0

Num Gas Bombs: 0

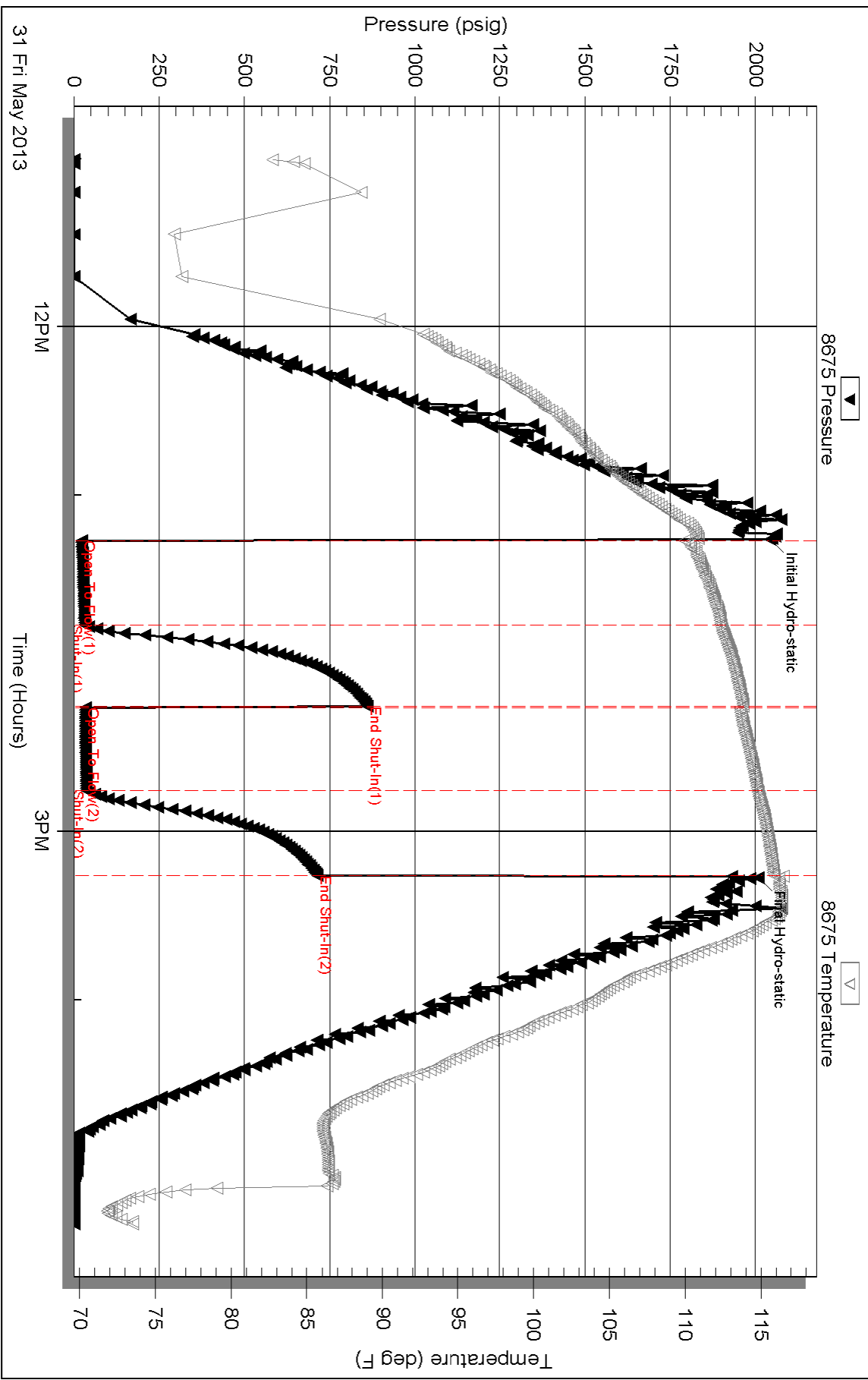
Serial #:

Laboratory Name:

Laboratory Location:

Recovery Comments:

Pressure vs. Time





TRILOBITE TESTING, INC.

DRILL STEM TEST REPORT

O'Brien Resources, LLC
 PO BOX 6149
 Shreveport LA, 71136
 ATTN: Sean Deenihan

21-14s-30w Gove Co, KS

Swart 21 #1

Job Ticket: 53073

DST#: 4

Test Start: 2013.06.01 @ 16:40:00

GENERAL INFORMATION:

Formation: **Myric Station**

Deviated: No Whipstock: ft (KB)

Time Tool Opened: 19:25:45

Time Test Ended: 01:18:15

Test Type: Conventional Bottom Hole (Reset)

Tester: Jace McKinney

Unit No: 46

Interval: 4361.00 ft (KB) To 4402.00 ft (KB) (TVD)

Total Depth: 4402.00 ft (KB) (TVD)

Hole Diameter: 7.88 inches Hole Condition: Fair

Reference Elevations: 2813.00 ft (KB)

2803.00 ft (CF)

KB to GR/CF: 10.00 ft

Serial #: 8675

Inside

Press @ Run Depth: 89.53 psig @ 4362.00 ft (KB)

Start Date: 2013.06.01

End Date:

2013.06.02

Start Time: 16:40:15

End Time:

01:18:15

Capacity: 8000.00 psig

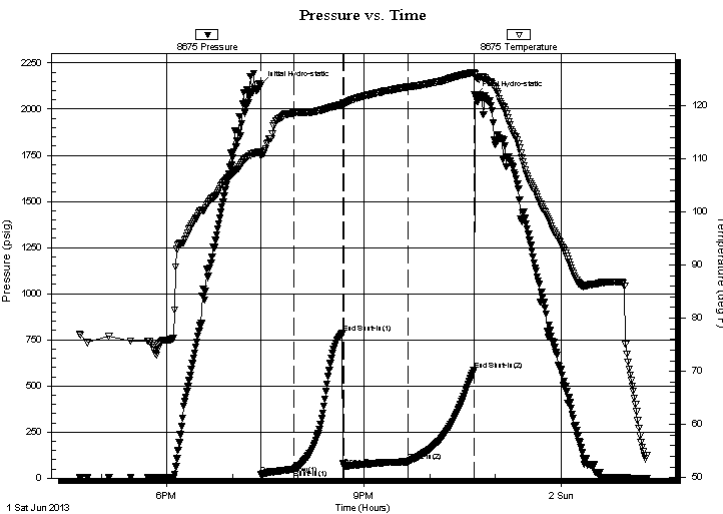
Last Calib.: 2013.06.02

Time On Btm: 2013.06.01 @ 19:25:30

Time Off Btm: 2013.06.01 @ 22:41:30

TEST COMMENT: Built to 4" blow
 No return blow
 Built to 5" blow
 No return blow

PRESSURE SUMMARY



Time (Min.)	Pressure (psig)	Temp (deg F)	Annotation
0	2130.13	111.31	Initial Hydro-static
1	20.66	110.57	Open To Flow (1)
31	48.32	118.61	Shut-In(1)
75	784.68	120.16	End Shut-In(1)
77	64.65	120.13	Open To Flow (2)
135	89.53	123.50	Shut-In(2)
195	584.08	126.20	End Shut-In(2)
196	2075.51	125.73	Final Hydro-static

Recovery

Length (ft)	Description	Volume (bbl)
10.00	100% Clean Oil	0.14
130.00	ocm 10%O 90%M	1.82

* Recovery from multiple tests

Gas Rates

Choke (inches)	Pressure (psig)	Gas Rate (Mcf/d)



**TRILOBITE
TESTING, INC.**

DRILL STEM TEST REPORT

FLUID SUMMARY

O'Brien Resources, LLC

21-14s-30w Gove Co, KS

PO BOX 6149
Shreveport LA, 71136

Swart 21 #1

Job Ticket: 53073

DST#: 4

ATTN: Sean Deenihan

Test Start: 2013.06.01 @ 16:40:00

Mud and Cushion Information

Mud Type: Gel Chem

Cushion Type:

Oil API:

32 deg API

Mud Weight: 9.00 lb/gal

Cushion Length:

ft

Water Salinity:

ppm

Viscosity: 53.00 sec/qt

Cushion Volume:

bbbl

Water Loss: 6.40 in³

Gas Cushion Type:

Resistivity: ohm.m

Gas Cushion Pressure:

psig

Salinity: 1500.00 ppm

Filter Cake: 1.00 inches

Recovery Information

Recovery Table

Length ft	Description	Volume bbbl
10.00	100% Clean Oil	0.140
130.00	ocm 10%O 90%M	1.824

Total Length: 140.00 ft Total Volume: 1.964 bbl

Num Fluid Samples: 0

Num Gas Bombs: 0

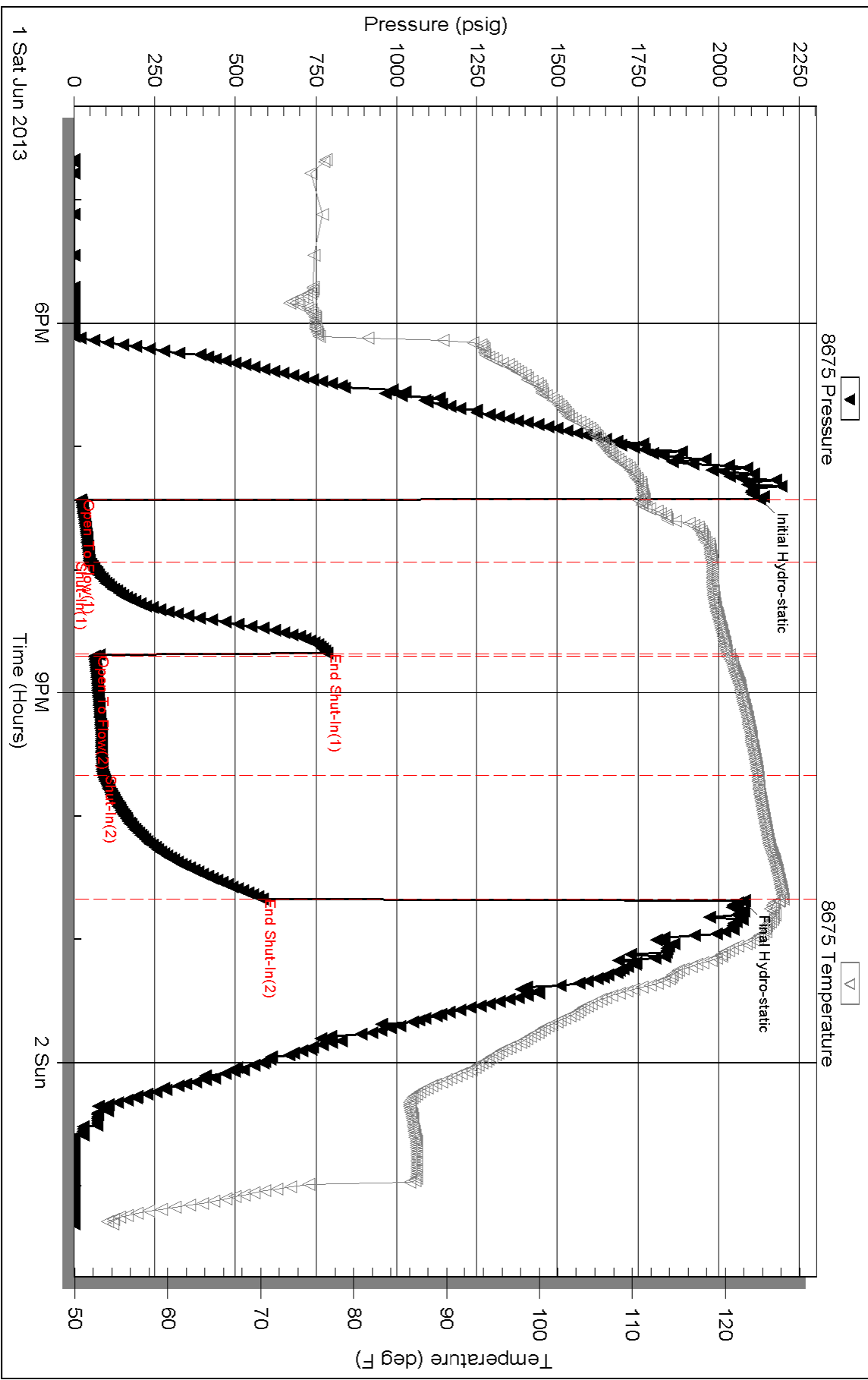
Serial #:

Laboratory Name:

Laboratory Location:

Recovery Comments: API: 33 @ 70 F = 32

Pressure vs. Time





**TRILOBITE
TESTING, INC.**

DRILL STEM TEST REPORT

O'Brien Resources, LLC

21-14s-30w Gove Co, KS

PO BOX 6149
Shreveport LA, 71136

Swart 21 #1

Job Ticket: 53074

DST#: 5

ATTN: Sean Deenihan

Test Start: 2013.06.02 @ 15:40:00

GENERAL INFORMATION:

Formation: **Johnson**

Deviated: No Whipstock: ft (KB)

Time Tool Opened: 17:54:00

Time Test Ended: 21:22:00

Test Type: Conventional Bottom Hole (Reset)

Tester: Jace McKinney

Unit No: 46

Interval: 4450.00 ft (KB) To 4507.00 ft (KB) (TVD)

Reference Elevations: 2813.00 ft (KB)

Total Depth: 4507.00 ft (KB) (TVD)

2803.00 ft (CF)

Hole Diameter: 7.88 inches Hole Condition: Fair

KB to GR/CF: 10.00 ft

Serial #: 8675 Inside

Press @ Run Depth: 21.34 psig @ 4451.00 ft (KB)

Capacity: 8000.00 psig

Start Date: 2013.06.02 End Date: 2013.06.02

Last Calib.: 2013.06.02

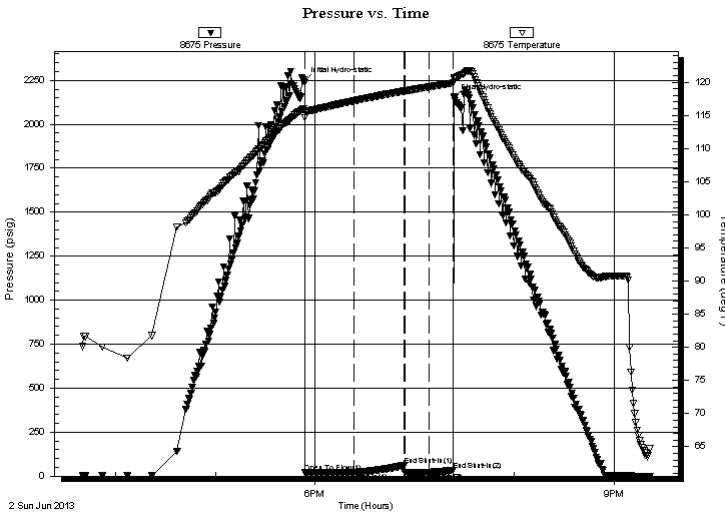
Start Time: 15:40:15 End Time: 21:22:00

Time On Btm: 2013.06.02 @ 17:53:30

Time Off Btm: 2013.06.02 @ 19:24:00

TEST COMMENT: Built to 1/4", died to weak surface blow
No return blow
No blow
No return blow

PRESSURE SUMMARY



Time (Min.)	Pressure (psig)	Temp (deg F)	Annotation
0	2242.72	115.98	Initial Hydro-static
1	19.61	114.67	Open To Flow (1)
31	22.46	117.19	Shut-In(1)
60	60.49	118.65	End Shut-In(1)
61	21.91	118.65	Open To Flow (2)
76	21.34	119.31	Shut-In(2)
90	32.67	119.88	End Shut-In(2)
91	2148.83	120.50	Final Hydro-static

Recovery

Length (ft)	Description	Volume (bbl)
5.00	100% Mud with oil scum	0.07

* Recovery from multiple tests

Gas Rates

Choke (inches)	Pressure (psig)	Gas Rate (Mcf/d)



**TRILOBITE
TESTING, INC.**

DRILL STEM TEST REPORT

FLUID SUMMARY

O'Brien Resources, LLC

21-14s-30w Gove Co, KS

PO BOX 6149
Shreveport LA, 71136

Swart 21 #1

Job Ticket: 53074

DST#: 5

ATTN: Sean Deenihan

Test Start: 2013.06.02 @ 15:40:00

Mud and Cushion Information

Mud Type: Gel Chem

Cushion Type:

Oil API:

deg API

Mud Weight: 9.00 lb/gal

Cushion Length:

ft

Water Salinity:

ppm

Viscosity: 50.00 sec/qt

Cushion Volume:

bbbl

Water Loss: 7.20 in³

Gas Cushion Type:

Resistivity: ohm.m

Gas Cushion Pressure:

psig

Salinity: 2200.00 ppm

Filter Cake: 1.00 inches

Recovery Information

Recovery Table

Length ft	Description	Volume bbl
5.00	100% Mud with oil scum	0.070

Total Length: 5.00 ft Total Volume: 0.070 bbl

Num Fluid Samples: 0

Num Gas Bombs: 0

Serial #:

Laboratory Name:

Laboratory Location:

Recovery Comments:

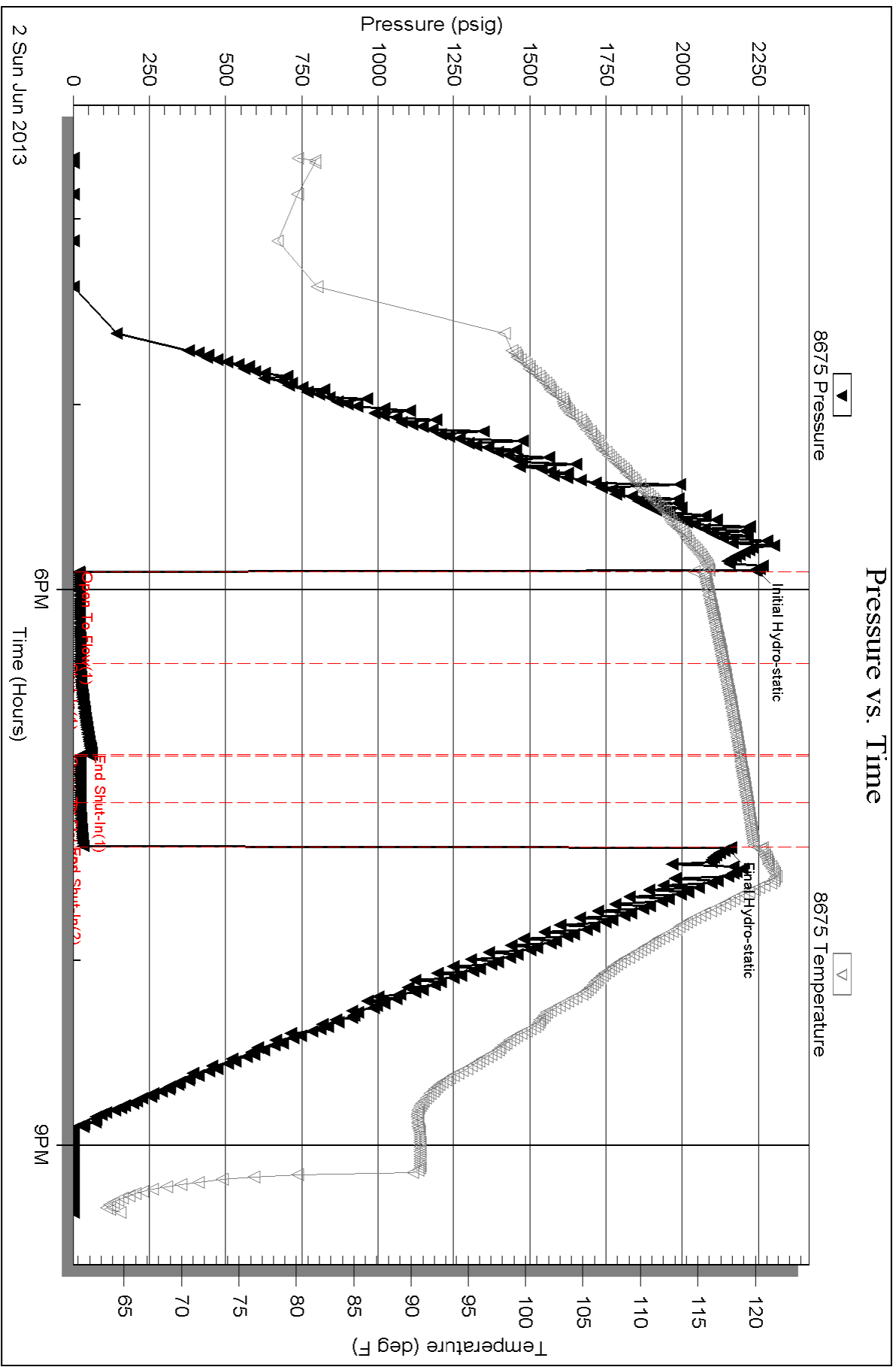
Serial #: 8675

Inside

O'Brien Resources, LLC

Sw art 21 #1

DST Test Number: 5



Triobite Testing, Inc

Ref. No: 53074

Printed: 2013.06.02 @ 23:44:14