

API # 15-171-20960-00-00

GEOLOGICAL REPORT

DRILLING TIME & SAMPLE LOGS

PREPARED BY GRADE E CRUISERS GEOLGIST

COMPANY ABERCROMBIE ENERGY
LEASE PI CCKETT # 1-17
FIELD _____
LOCATION 335⁺ FEL 8 1720⁺ FNL
SEC 17 TWP 20 S RGE 34 W
COUNTY SCOTT STATE KANSAS

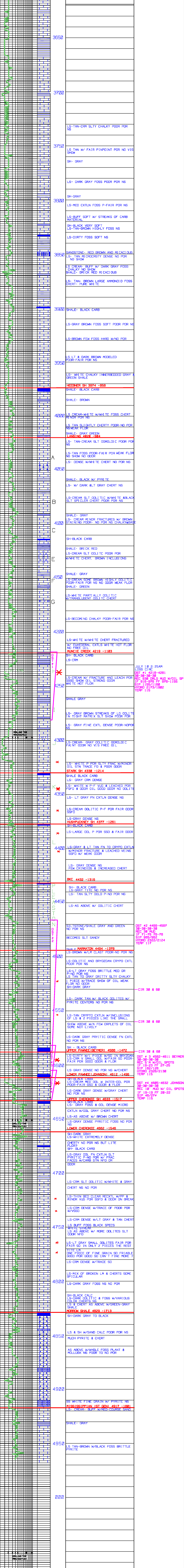
ELEVATION K.B. 3116
D.F. _____
G.L. 3106
DEPTH MEASURED FROM KB Log 4958 0-4955

CONTRACTOR VAL RIG # 7
SPUD 07/05/13 COMP 07/15/2013
SAMPLES SAVED FROM 3600 TO TD

Surf from 8 5/8 307'
Production NONE
DIP/VEL Sonic QVO PE

FORMATION	SAMPLE	E LOG	DATE
ANWATERITE	2377	-899	
HEFNER SH 3974	2395	-891	
HEFNER SH 3974	2397	-891	
MANUEL CRK 4626	4318	-882	
MANUEL CRK 4626	4319	-882	
STARK SH 4330	4325	-1209	
BKC SH 4478	4467	-1261	
MARMATON 4484	4494	-1378	
BETWYER 4566	4584	-1468	
JOHNSON 4612	4612	-1486	
JOHNSON SH 4635	4626	-1509	
JOHNSON SH 4635	4627	-1509	
MISSISSIPPI 4917	4913	-1997	

FORMATION	SAMPLE	E LOG	DATE
ANWATERITE	2377	-899	
HEFNER SH 3974	2395	-891	
HEFNER SH 3974	2397	-891	
MANUEL CRK 4626	4318	-882	
MANUEL CRK 4626	4319	-882	
STARK SH 4330	4325	-1209	
BKC SH 4478	4467	-1261	
MARMATON 4484	4494	-1378	
BETWYER 4566	4584	-1468	
JOHNSON 4612	4612	-1486	
JOHNSON SH 4635	4626	-1509	
JOHNSON SH 4635	4627	-1509	
MISSISSIPPI 4917	4913	-1997	



JULY 10 2:25AM
LOSS CIR
DST #1 4218-4281
30-30-30-30
REC 930 DRLG MUD W/OIL SP
IF 916-976 FF 970-1155
SIP 1155/1168
HYDR 2173/1902
TEMP 115

DST #2 4465-4567
30-30-30-30
REC 30 MUD
IF 71-76 76-76
SIP 985/982
HYDR 2322/2124
TEMP 117

DST #3 4582-4611 BEYMER
30-30-30-30
REC 5" M W/OIL SPOTS
IF 19-23 FF 27-25
SIP 182/128
HYDR 2328/2138
TEMP 115

DST #4 4605-4632 JOHNSON
30-30-30-30
REC 10" MUD W/ OIL SPOTS
IF 19-19 FF 20-22
SIP 46/27#
TEMP 115