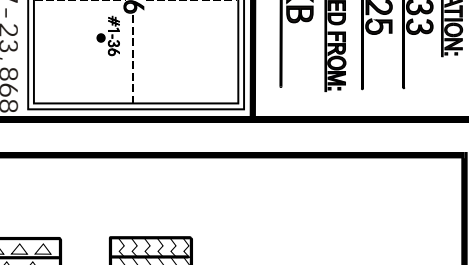




## GEOLOGIST'S REPORT

DRILLING TIME AND SAMPLE LOG



ELEVATION: KB 1933  
GL: 1925  
MEASURED FROM: KB

OPERATOR: Russell Oil, Inc.  
LEASE: Streck WELL NO.: #1-36  
LOCATION: 1510'FS & 1630'FE  
SEC: 36 TWP: 15S RNG: 15W  
COUNTY: Russell STATE: Kansas

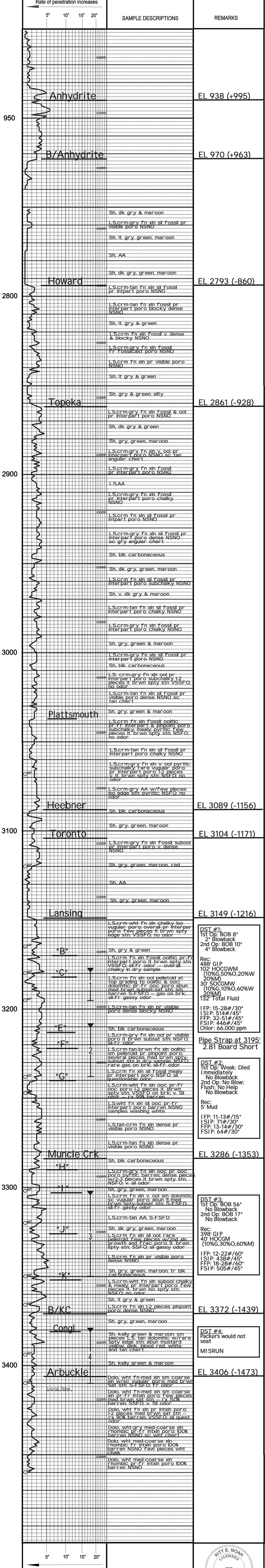
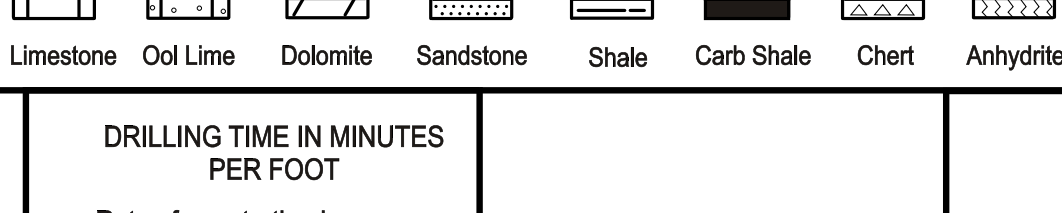
CASING RECORD:  
SURFACE: 8 5/8" set at 940 W/375 SX.  
PRODUCTION: 5.12" set at 3458 W/125 SX.  
DV TOOL: \_\_\_\_\_

FORMATION	TOP	LOG	DATE
Anhydrite	938 (+995)		
B/Anhydrite	970 (+963)		
Topeka	2861 (-928)		
Heebner	3089 (-1156)		
Toronto	3104 (-1171)		
Lansing	3149 (-1216)		
Muncie Creek	3286 (-1353)		
B/KC	3372 (-1439)		
Arbuckle	3406 (-1473)		
RTD	3460 (-1527)		
LTD	3462 (-1529)		

CONTRACTOR: Southwind Rig #6  
COMM: 5-2-2013 COMPL: 5-11-2013  
RTD: 3460 LTD: 3462  
SAMPLES SAVED FROM: 2150 TO TD  
DRILLING TIME SAVED FROM: 2750 TO TD  
SAMPLES EXAMINED FROM: 2750 TO TD  
GEOLOGICAL SUPERVISION FROM: 2850 TO TD  
MUD UP: 3450 MUD TYPE: chemical  
Mudco - Rick Hughes  
DRILL STEM TESTS TAKEN: 4  
Trihalite - Dustin Rash

SURVEYS: Pioneer Energy Services  
Dual Compensated Porosity  
Microlog  
Borehole Compensated Sonic

### LEGEND



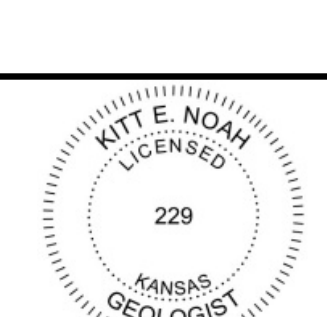
DST #1:  
1st Op: BOB 8"  
2" Blowback  
2nd Op: BOB 10"  
4" Blowback  
Rec:  
488' GIP  
102' HOCGWM  
(10%G,50%O,20%W  
20%M)  
30' SOCGMW  
(10%G,10%O,60%W  
20%M)  
132' Total Fluid  
IFP: 15-28#/30"  
ISIP: 514#/45"  
FFP: 32-51#/45"  
FSIP: 446#/45"  
Chlor: 66,000 ppm

Pipe Strap at 3195'  
2.81 Board Short

DST #2:  
1st Op: Weak; Died  
Immediately  
No Blowback  
2nd Op: No Blow;  
Flush: No Help  
No Blowback  
Rec:  
5' Mud  
IFP: 11-13#/15"  
ISIP: 71#/30"  
FFP: 13-14#/30"  
FSIP: 64#/30"

DST #3:  
1st Op: BOB 56"  
No Blowback  
2nd Op: BOB 17"  
No Blowback  
Rec:  
398' GIP  
40' HOCGM  
(10%G,30%O,60%M)  
IFP: 12-22#/60"  
ISIP: 438#/45"  
FFP: 18-28#/60"  
FSIP: 505#/45"

DST #4:  
Packers would not  
seat  
MISRUN



DRILLING TIME IN MINUTES PER FOOT: 5" 10" 15" 20"  
Rate of penetration increases

OPERATOR: Russell Oil, Inc. LOCATION: 1510'FS & 1630'FE  
LEASE: Streck WELL NO.: #1-36 SEC: 36 TWP: 15S RNG: 15W  
API: 15-167-23.868 FIELD: Boxberger NE COUNTY: Russell STATE: Kansas

ELEVATION: KB 1933