



**TRILOBITE TESTING, INC.**

# DRILL STEM TEST REPORT

Russell Oil, Inc.

**36/15S/15W-Russell**

**Streck #1-36**

Job Ticket: 52125

**DST#: 1**

ATTN: Kitt Noah

Test Start: 2013.05.08 @ 03:50:45

## GENERAL INFORMATION:

Formation: **LKC "C"**

Deviated: No Whipstock: ft (KB)

Time Tool Opened: 05:21:55

Time Test Ended: 10:04:15

Test Type: Conventional Bottom Hole (Initial)

Tester: Dustin Rash

Unit No: 66

**Interval: 3177.00 ft (KB) To 3195.00 ft (KB) (TVD)**

Reference Elevations: 1933.00 ft (KB)

Total Depth: 3195.00 ft (KB) (TVD)

1928.00 ft (CF)

Hole Diameter: 7.88 inches Hole Condition: Fair

KB to GR/CF: 5.00 ft

**Serial #: 8520 Outside**

Press @ Run Depth: 51.37 psig @ 3180.00 ft (KB)

Capacity: 8000.00 psig

Start Date: 2013.05.08

End Date:

2013.05.08

Last Calib.:

2013.05.08

Start Time: 03:50:45

End Time:

10:04:15

Time On Btm:

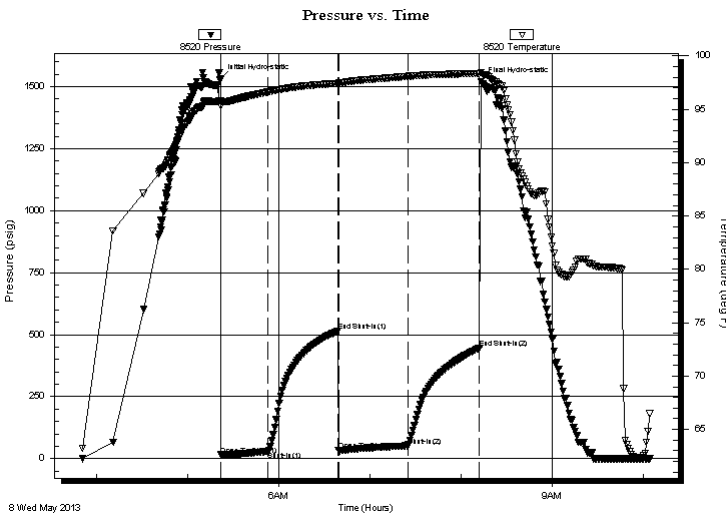
2013.05.08 @ 05:21:45

Time Off Btm:

2013.05.08 @ 08:13:15

**TEST COMMENT:** IF-Strong building blow . BOB @ 8 minutes.  
 ISI-Return @ 2 minutes. Built to 2 inches.  
 FF-Strong building blow . BOB @ 10 minutes.  
 FSI-Return @ 30 seconds. Built to 4 inches.

## PRESSURE SUMMARY



Time (Min.)	Pressure (psig)	Temp (deg F)	Annotation
0	1533.27	95.84	Initial Hydro-static
1	14.95	95.32	Open To Flow (1)
31	28.38	96.63	Shut-In(1)
77	513.92	97.44	End Shut-In(1)
78	32.05	97.49	Open To Flow (2)
123	51.37	98.09	Shut-In(2)
171	446.48	98.36	End Shut-In(2)
172	1519.37	98.47	Final Hydro-static

## Recovery

Length (ft)	Description	Volume (bbl)
30.00	10%Gas/10%Oil/60%Water/20%Mud	0.42
102.00	10%Gas/50%Oil/20%Water/20%Mud	1.43
0.00	488' G.I.P.	0.00

## Gas Rates

	Choke (inches)	Pressure (psig)	Gas Rate (Mcf/d)



**TRILOBITE  
TESTING, INC.**

# DRILL STEM TEST REPORT

**FLUID SUMMARY**

Russell Oil, Inc.

**36/15S/15W-Russell**

**Streck #1-36**

Job Ticket: 52125

**DST#: 1**

ATTN: Kitt Noah

Test Start: 2013.05.08 @ 03:50:45

## Mud and Cushion Information

Mud Type: Gel Chem

Cushion Type:

Oil API:

deg API

Mud Weight: 9.00 lb/gal

Cushion Length:

ft

Water Salinity:

7500 ppm

Viscosity: 44.00 sec/qt

Cushion Volume:

bbbl

Water Loss: 8.78 in<sup>3</sup>

Gas Cushion Type:

Resistivity: 0.87 ohm.m

Gas Cushion Pressure:

psig

Salinity: 4900.00 ppm

Filter Cake: inches

## Recovery Information

Recovery Table

Length ft	Description	Volume bbbl
30.00	10%Gas/10%Oil/60%Water/20%Mud	0.421
102.00	10%Gas/50%Oil/20%Water/20%Mud	1.431
0.00	488' G.I.P.	0.000

Total Length: 132.00 ft

Total Volume: 1.852 bbl

Num Fluid Samples: 0

Num Gas Bombs: 0

Serial #:

Laboratory Name:

Laboratory Location:

Recovery Comments:

