

Woolsey Operating Company, LLC

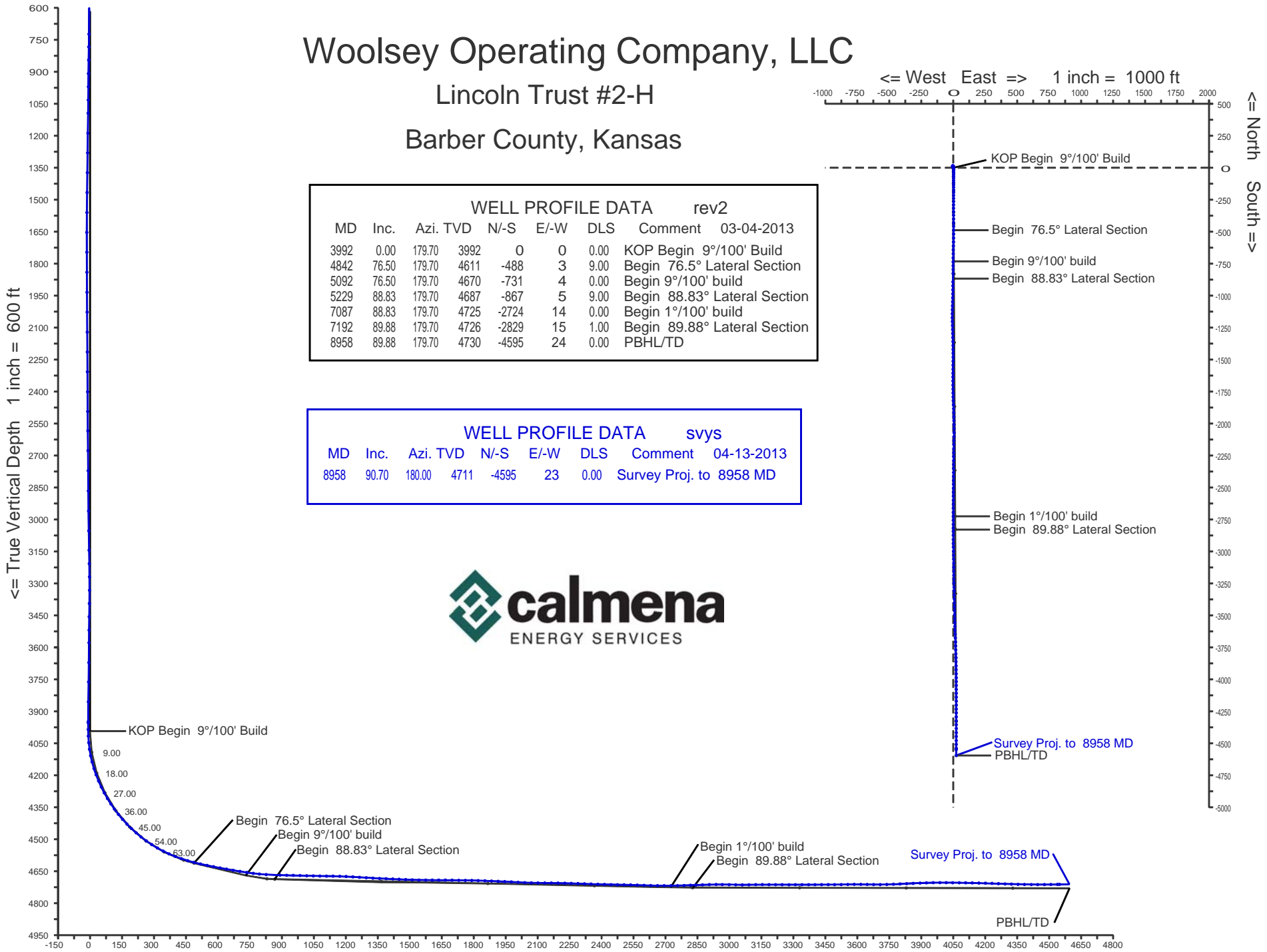
Lincoln Trust #2-H

Barber County, Kansas

<= West East => 1 inch = 1000 ft

WELL PROFILE DATA rev2							
MD	Inc.	Azi.	TVD	N/-S	E/-W	DLS	Comment
3992	0.00	179.70	3992	0	0	0.00	KOP Begin 9°/100' Build
4842	76.50	179.70	4611	-488	3	9.00	Begin 76.5° Lateral Section
5092	76.50	179.70	4670	-731	4	0.00	Begin 9°/100' build
5229	88.83	179.70	4687	-867	5	9.00	Begin 88.83° Lateral Section
7087	88.83	179.70	4725	-2724	14	0.00	Begin 1°/100' build
7192	89.88	179.70	4726	-2829	15	1.00	Begin 89.88° Lateral Section
8958	89.88	179.70	4730	-4595	24	0.00	PBHL/TD

WELL PROFILE DATA svys							
MD	Inc.	Azi.	TVD	N/-S	E/-W	DLS	Comment
8958	90.70	180.00	4711	-4595	23	0.00	Survey Proj. to 8958 MD



Vertical Section on 179.69 deg azimuth with reference 0.00 N, 0.00 E

Calmena Energy Services

Company: Woolsey Operating Company
 Well: Lincoln Trust #2-H
 Location:

Date: 13-Apr-2013
 Surveys
 Page 1
 Job# : 7136
 Gr elev=1375 RKB=1392

MD (feet)	Inclination (degrees)	Azimuth (degrees)	TVD RKB (feet)	N/-S (feet)	E/-W (feet)	DLS (deg/100')	VS @ 179.70° Az (feet)	Grid Y	Grid X	Comments
Surface Location								152531.00	2006347.00	
0.00	0.00	0.00	0.00	0.00	0.00	0.00	0.00	152531.00	2006347.00	
723.00	0.70	0.20	722.98	4.42	0.02	0.10	-4.42	152535.42	2006347.02	
783.00	0.80	348.95	782.98	5.19	-0.06	0.30	-5.19	152536.19	2006346.94	
845.00	0.70	341.92	844.97	5.98	-0.26	0.22	-5.98	152536.98	2006346.74	
908.00	0.80	340.16	907.97	6.76	-0.53	0.16	-6.76	152537.76	2006346.47	
970.00	0.60	339.46	969.96	7.47	-0.79	0.32	-7.47	152538.47	2006346.21	
1032.00	0.60	349.30	1031.96	8.09	-0.97	0.17	-8.10	152539.09	2006346.03	
1094.00	0.70	342.60	1093.95	8.77	-1.14	0.20	-8.78	152539.77	2006345.86	
1188.00	0.80	352.60	1187.95	9.97	-1.40	0.17	-9.98	152540.97	2006345.60	
1280.00	0.80	347.20	1279.94	11.23	-1.62	0.08	-11.24	152542.23	2006345.38	
1373.00	0.70	338.20	1372.93	12.40	-1.98	0.17	-12.41	152543.40	2006345.02	
1466.00	0.80	334.00	1465.92	13.51	-2.47	0.12	-13.52	152544.51	2006344.53	
1560.00	0.80	340.70	1559.91	14.72	-2.98	0.10	-14.73	152545.72	2006344.02	
1653.00	0.30	229.40	1652.91	15.17	-3.38	1.02	-15.19	152546.17	2006343.62	
1746.00	0.30	236.80	1745.91	14.88	-3.77	0.04	-14.90	152545.88	2006343.23	
1840.00	0.30	213.60	1839.91	14.54	-4.11	0.13	-14.56	152545.54	2006342.89	
1934.00	0.40	204.10	1933.91	14.03	-4.38	0.12	-14.06	152545.03	2006342.62	
2027.00	0.40	196.40	2026.90	13.43	-4.60	0.06	-13.45	152544.43	2006342.40	
2121.00	0.30	215.90	2120.90	12.91	-4.84	0.16	-12.94	152543.91	2006342.16	
2214.00	0.30	177.20	2213.90	12.47	-4.97	0.21	-12.50	152543.47	2006342.03	
2307.00	0.30	162.10	2306.90	12.00	-4.88	0.08	-12.02	152543.00	2006342.12	
2401.00	0.50	154.40	2400.90	11.39	-4.63	0.22	-11.42	152542.39	2006342.37	
2493.00	0.60	143.30	2492.89	10.64	-4.17	0.16	-10.67	152541.64	2006342.83	
2584.00	0.40	147.20	2583.89	10.00	-3.71	0.22	-10.01	152541.00	2006343.29	
2677.00	0.50	141.40	2676.89	9.41	-3.28	0.12	-9.42	152540.41	2006343.72	
2771.00	0.60	159.30	2770.88	8.62	-2.85	0.21	-8.64	152539.62	2006344.15	
2866.00	0.60	161.00	2865.88	7.69	-2.52	0.02	-7.70	152538.69	2006344.48	
2960.00	0.70	167.00	2959.87	6.66	-2.23	0.13	-6.68	152537.66	2006344.77	
3053.00	0.70	160.70	3052.86	5.57	-1.91	0.08	-5.58	152536.57	2006345.09	
3144.00	0.80	168.60	3143.86	4.43	-1.60	0.16	-4.44	152535.43	2006345.40	

Calmena Energy Services

Company: Woolsey Operating Company
 Well: Lincoln Trust #2-H
 Location:

Date: 13-Apr-2013
 Surveys
 Page 2
 Job# : 7136
 Gr elev=1375 RKB=1392

MD (feet)	Inclination (degrees)	Azimuth (degrees)	TVD RKB (feet)	N/-S (feet)	E/-W (feet)	DLS (deg/100')	VS @ 179.70° Az (feet)	Grid Y	Grid X	Comments
3207.00	1.10	176.70	3206.85	3.39	-1.48	0.52	-3.40	152534.39	2006345.52	
3269.00	0.70	177.40	3268.84	2.42	-1.43	0.65	-2.43	152533.42	2006345.57	
3332.00	0.60	43.40	3331.84	2.27	-1.18	1.90	-2.28	152533.27	2006345.82	
3394.00	1.00	30.80	3393.83	2.98	-0.68	0.70	-2.98	152533.98	2006346.32	
3456.00	0.50	28.50	3455.83	3.68	-0.28	0.81	-3.68	152534.68	2006346.72	
3519.00	0.50	29.20	3518.82	4.16	-0.01	0.01	-4.16	152535.16	2006346.99	
3578.00	0.60	39.90	3577.82	4.62	0.31	0.24	-4.62	152535.62	2006347.31	
3671.00	0.60	27.80	3670.82	5.43	0.85	0.14	-5.42	152536.43	2006347.85	
3762.00	1.00	29.90	3761.81	6.54	1.47	0.44	-6.53	152537.54	2006348.47	
3855.00	0.40	18.70	3854.80	7.55	1.98	0.66	-7.54	152538.55	2006348.98	
3948.00	0.50	40.50	3947.80	8.16	2.35	0.21	-8.15	152539.16	2006349.35	
3954.00	0.50	45.90	3953.80	8.20	2.38	0.79	-8.19	152539.20	2006349.38	
3985.00	0.10	198.70	3984.80	8.27	2.47	1.91	-8.26	152539.27	2006349.47	
4016.00	2.00	185.60	4015.79	7.70	2.41	6.14	-7.69	152538.70	2006349.41	
4047.00	4.70	182.10	4046.73	5.90	2.31	8.73	-5.88	152536.90	2006349.31	
4078.00	8.20	181.30	4077.53	2.42	2.21	11.29	-2.41	152533.42	2006349.21	
4109.00	11.70	180.00	4108.06	-2.94	2.16	11.31	2.95	152528.06	2006349.16	
4139.00	14.80	179.30	4137.26	-9.81	2.21	10.35	9.82	152521.19	2006349.21	
4171.00	17.80	178.80	4167.97	-18.79	2.36	9.39	18.80	152512.21	2006349.36	
4202.00	20.30	179.50	4197.27	-28.91	2.51	8.10	28.92	152502.09	2006349.51	
4233.00	22.70	180.20	4226.11	-40.27	2.53	7.79	40.28	152490.73	2006349.53	
4264.00	25.40	181.10	4254.42	-52.90	2.38	8.79	52.91	152478.10	2006349.38	
4295.00	28.20	181.30	4282.08	-66.87	2.09	9.04	66.88	152464.13	2006349.09	
4325.00	31.00	180.70	4308.17	-81.69	1.84	9.39	81.70	152449.31	2006348.84	
4356.00	33.60	179.80	4334.37	-98.25	1.77	8.53	98.26	152432.75	2006348.77	
4385.00	35.70	179.10	4358.22	-114.74	1.93	7.37	114.75	152416.26	2006348.93	
4416.00	38.40	179.50	4382.96	-133.41	2.15	8.74	133.42	152397.59	2006349.15	
4446.00	41.10	179.50	4406.02	-152.59	2.32	9.00	152.60	152378.41	2006349.32	
4477.00	44.00	180.00	4428.86	-173.55	2.41	9.42	173.56	152357.45	2006349.41	
4506.00	46.50	180.20	4449.27	-194.15	2.37	8.63	194.16	152336.85	2006349.37	

Calmena Energy Services

Company: Woolsey Operating Company
 Well: Lincoln Trust #2-H
 Location:

Date: 13-Apr-2013
 Surveys
 Page 3
 Job# : 7136
 Gr elev=1375 RKB=1392

MD (feet)	Inclination (degrees)	Azimuth (degrees)	TVD RKB (feet)	N/-S (feet)	E/-W (feet)	DLS (deg/100')	VS @ 179.70° Az (feet)	Grid Y	Grid X	Comments
4536.00	49.00	180.20	4469.44	-216.35	2.30	8.33	216.36	152314.65	2006349.30	
4566.00	51.60	180.70	4488.61	-239.43	2.11	8.76	239.44	152291.57	2006349.11	
4597.00	54.20	180.70	4507.30	-264.15	1.81	8.39	264.16	152266.85	2006348.81	
4628.00	57.10	180.60	4524.79	-289.74	1.52	9.36	289.74	152241.26	2006348.52	
4659.00	60.50	179.80	4540.85	-316.25	1.43	11.19	316.26	152214.75	2006348.43	
4690.00	63.40	179.80	4555.43	-343.61	1.53	9.35	343.61	152187.39	2006348.53	
4720.00	66.10	179.50	4568.22	-370.74	1.69	9.05	370.74	152160.26	2006348.69	
4751.00	68.70	179.50	4580.13	-399.35	1.94	8.39	399.36	152131.65	2006348.94	
4782.00	71.10	178.80	4590.79	-428.46	2.38	8.03	428.47	152102.54	2006349.38	
4813.00	73.60	180.00	4600.19	-458.00	2.68	8.87	458.00	152073.00	2006349.68	
4844.00	75.40	180.40	4608.47	-487.87	2.58	5.94	487.87	152043.13	2006349.58	
4875.00	77.40	180.70	4615.76	-518.00	2.29	6.52	518.00	152013.00	2006349.29	
4907.00	78.50	181.10	4622.44	-549.29	1.80	3.65	549.29	151981.71	2006348.80	
4938.00	79.30	181.60	4628.41	-579.70	1.08	3.03	579.70	151951.30	2006348.08	
4969.00	79.40	181.30	4634.14	-610.15	0.31	1.00	610.15	151920.85	2006347.31	
5000.00	79.60	180.90	4639.79	-640.63	-0.27	1.42	640.62	151890.37	2006346.73	
5032.00	80.40	180.70	4645.34	-672.14	-0.71	2.57	672.13	151858.86	2006346.29	
5064.00	80.90	180.60	4650.54	-703.71	-1.07	1.59	703.70	151827.29	2006345.93	
5096.00	81.30	180.40	4655.49	-735.33	-1.35	1.39	735.31	151795.67	2006345.65	
5127.00	82.80	180.00	4659.78	-766.03	-1.46	5.00	766.01	151764.97	2006345.54	
5156.00	84.30	180.00	4663.04	-794.84	-1.46	5.17	794.82	151736.16	2006345.54	
5188.00	86.80	180.90	4665.52	-826.74	-1.71	8.30	826.72	151704.26	2006345.29	
5253.00	88.70	181.10	4668.07	-891.68	-2.84	2.94	891.65	151639.32	2006344.16	
5284.00	89.20	180.60	4668.64	-922.67	-3.30	2.28	922.64	151608.33	2006343.70	
5315.00	89.30	180.40	4669.05	-953.67	-3.57	0.72	953.63	151577.33	2006343.43	
5347.00	87.60	180.70	4669.91	-985.65	-3.88	5.39	985.62	151545.35	2006343.12	
5378.00	88.10	181.40	4671.07	-1016.63	-4.44	2.77	1016.59	151514.38	2006342.56	
5409.00	88.90	181.40	4671.89	-1047.60	-5.20	2.58	1047.56	151483.40	2006341.80	
5440.00	89.20	181.80	4672.40	-1078.59	-6.07	1.61	1078.54	151452.41	2006340.93	
5471.00	89.70	181.40	4672.70	-1109.57	-6.93	2.07	1109.52	151421.43	2006340.07	

Calmena Energy Services

Company: Woolsey Operating Company
 Well: Lincoln Trust #2-H
 Location:

Date: 13-Apr-2013
 Surveys
 Page 4
 Job# : 7136
 Gr elev=1375 RKB=1392

MD (feet)	Inclination (degrees)	Azimuth (degrees)	TVD RKB (feet)	N/S (feet)	E/-W (feet)	DLS (deg/100')	VS @ 179.70° Az (feet)	Grid Y	Grid X	Comments
5502.00	89.90	180.90	4672.81	-1140.57	-7.55	1.74	1140.51	151390.43	2006339.45	
5533.00	88.10	179.70	4673.35	-1171.56	-7.72	6.98	1171.50	151359.44	2006339.28	
5563.00	87.40	178.10	4674.52	-1201.53	-7.14	5.82	1201.48	151329.47	2006339.86	
5595.00	86.30	178.40	4676.28	-1233.47	-6.17	3.56	1233.42	151297.53	2006340.83	
5626.00	86.00	178.10	4678.36	-1264.38	-5.22	1.37	1264.34	151266.62	2006341.78	
5658.00	86.50	178.60	4680.46	-1296.30	-4.30	2.21	1296.26	151234.70	2006342.70	
5689.00	87.00	178.30	4682.21	-1327.24	-3.47	1.88	1327.20	151203.76	2006343.53	
5720.00	87.70	178.60	4683.65	-1358.20	-2.63	2.46	1358.16	151172.81	2006344.37	
5751.00	87.90	179.30	4684.84	-1389.17	-2.06	2.35	1389.14	151141.83	2006344.94	
5782.00	87.90	179.70	4685.97	-1420.15	-1.79	1.29	1420.12	151110.86	2006345.21	
5812.00	87.10	179.70	4687.28	-1450.12	-1.63	2.67	1450.09	151080.89	2006345.37	
5843.00	86.80	179.80	4688.93	-1481.07	-1.50	1.02	1481.04	151049.93	2006345.50	
5874.00	87.80	180.60	4690.39	-1512.04	-1.61	4.13	1512.01	151018.96	2006345.39	
5905.00	89.20	180.60	4691.20	-1543.02	-1.93	4.52	1542.99	150987.98	2006345.07	
5937.00	89.90	180.60	4691.45	-1575.02	-2.27	2.19	1574.99	150955.98	2006344.73	
5968.00	90.30	180.20	4691.40	-1606.02	-2.48	1.82	1605.98	150924.98	2006344.52	
5998.00	90.60	180.60	4691.17	-1636.02	-2.69	1.67	1635.98	150894.98	2006344.31	
6029.00	89.60	179.80	4691.11	-1667.02	-2.80	4.13	1666.98	150863.98	2006344.20	
6061.00	88.30	179.30	4691.70	-1699.01	-2.55	4.35	1698.97	150831.99	2006344.45	
6092.00	88.90	179.10	4692.45	-1730.00	-2.12	2.04	1729.96	150801.00	2006344.88	
6123.00	89.90	179.30	4692.78	-1760.99	-1.68	3.29	1760.96	150770.01	2006345.32	
6153.00	89.20	178.30	4693.02	-1790.98	-1.05	4.07	1790.95	150740.02	2006345.95	
6183.00	88.40	178.40	4693.64	-1820.96	-0.19	2.69	1820.94	150710.04	2006346.81	
6215.00	88.30	177.40	4694.56	-1852.93	0.98	3.14	1852.91	150678.07	2006347.98	
6246.00	87.50	177.40	4695.70	-1883.88	2.39	2.58	1883.86	150647.12	2006349.39	
6277.00	87.40	178.40	4697.08	-1914.82	3.52	3.24	1914.82	150616.18	2006350.52	
6308.00	87.70	178.80	4698.41	-1945.79	4.28	1.61	1945.78	150585.21	2006351.28	
6339.00	87.10	179.10	4699.81	-1976.75	4.85	2.16	1976.75	150554.25	2006351.85	
6371.00	86.70	179.30	4701.54	-2008.70	5.29	1.40	2008.70	150522.30	2006352.29	
6402.00	87.30	179.30	4703.16	-2039.65	5.67	1.94	2039.66	150491.35	2006352.67	

Calmena Energy Services

Company: Woolsey Operating Company
 Well: Lincoln Trust #2-H
 Location:

Date: 13-Apr-2013
 Surveys
 Page 5
 Job# : 7136
 Gr elev=1375 RKB=1392

MD (feet)	Inclination (degrees)	Azimuth (degrees)	TVD RKB (feet)	N/-S (feet)	E/-W (feet)	DLS (deg/100')	VS @ 179.70° Az (feet)	Grid Y	Grid X	Comments
6433.00	88.50	180.00	4704.30	-2070.63	5.86	4.48	2070.63	150460.37	2006352.86	
6464.00	89.70	181.30	4704.79	-2101.63	5.51	5.71	2101.63	150429.38	2006352.51	
6496.00	89.90	181.30	4704.90	-2133.62	4.78	0.63	2133.61	150397.38	2006351.78	
6527.00	89.50	180.90	4705.06	-2164.61	4.19	1.82	2164.60	150366.39	2006351.19	
6558.00	89.00	180.70	4705.47	-2195.60	3.75	1.74	2195.59	150335.40	2006350.75	
6590.00	88.90	180.60	4706.05	-2227.60	3.39	0.44	2227.58	150303.40	2006350.39	
6620.00	88.90	180.70	4706.63	-2257.59	3.05	0.33	2257.58	150273.41	2006350.05	
6652.00	87.80	180.20	4707.55	-2289.58	2.80	3.78	2289.56	150241.43	2006349.80	
6682.00	87.80	180.60	4708.70	-2319.55	2.59	1.33	2319.53	150211.45	2006349.59	
6713.00	87.80	180.40	4709.89	-2350.53	2.32	0.64	2350.51	150180.47	2006349.32	
6745.00	88.30	180.00	4710.98	-2382.51	2.21	2.00	2382.49	150148.49	2006349.21	
6776.00	88.40	180.60	4711.87	-2413.50	2.05	1.96	2413.47	150117.51	2006349.05	
6807.00	88.60	180.60	4712.69	-2444.48	1.72	0.65	2444.46	150086.52	2006348.72	
6837.00	89.20	180.60	4713.26	-2474.48	1.41	2.00	2474.45	150056.52	2006348.41	
6868.00	89.90	180.60	4713.50	-2505.47	1.08	2.26	2505.44	150025.53	2006348.08	
6899.00	89.00	180.70	4713.80	-2536.47	0.73	2.92	2536.44	149994.53	2006347.73	
6930.00	87.60	180.20	4714.72	-2567.45	0.49	4.80	2567.42	149963.55	2006347.49	
6962.00	87.90	180.40	4715.98	-2599.43	0.32	1.13	2599.40	149931.57	2006347.32	
6993.00	88.90	180.60	4716.84	-2630.42	0.05	3.29	2630.38	149900.59	2006347.05	
7025.00	89.60	180.60	4717.26	-2662.41	-0.29	2.19	2662.37	149868.59	2006346.71	
7056.00	89.80	180.00	4717.42	-2693.41	-0.45	2.04	2693.37	149837.59	2006346.55	
7088.00	90.10	179.80	4717.45	-2725.41	-0.39	1.13	2725.37	149805.59	2006346.61	
7119.00	90.30	179.50	4717.34	-2756.41	-0.20	1.16	2756.37	149774.59	2006346.80	
7150.00	92.00	180.20	4716.72	-2787.40	-0.12	5.93	2787.36	149743.60	2006346.88	
7180.00	92.60	180.20	4715.52	-2817.38	-0.23	2.00	2817.34	149713.62	2006346.77	
7205.00	92.10	180.00	4714.49	-2842.36	-0.27	2.15	2842.32	149688.65	2006346.73	
7236.00	92.10	180.00	4713.36	-2873.33	-0.27	0.00	2873.29	149657.67	2006346.73	
7268.00	91.80	180.00	4712.27	-2905.32	-0.27	0.94	2905.27	149625.68	2006346.73	
7300.00	89.70	179.10	4711.85	-2937.31	-0.02	7.14	2937.27	149593.69	2006346.98	
7329.00	89.20	178.20	4712.13	-2966.30	0.66	3.55	2966.26	149564.70	2006347.66	

Calmena Energy Services

Company: Woolsey Operating Company
 Well: Lincoln Trust #2-H
 Location:

Date: 13-Apr-2013
 Surveys
 Page 6
 Job# : 7136
 Gr elev=1375 RKB=1392

MD (feet)	Inclination (degrees)	Azimuth (degrees)	TVD RKB (feet)	N/S (feet)	E/W (feet)	DLS (deg/100')	VS @ 179.70° Az (feet)	Grid Y	Grid X	Comments
7361.00	88.90	178.40	4712.66	-2998.28	1.61	1.13	2998.25	149532.72	2006348.61	
7392.00	88.60	178.40	4713.33	-3029.26	2.48	0.97	3029.23	149501.74	2006349.48	
7423.00	90.10	178.90	4713.69	-3060.25	3.21	5.10	3060.23	149470.75	2006350.21	
7454.00	91.50	179.30	4713.25	-3091.24	3.70	4.70	3091.22	149439.76	2006350.70	
7486.00	91.00	179.40	4712.56	-3123.23	4.06	1.59	3123.21	149407.77	2006351.06	
7517.00	89.60	180.00	4712.39	-3154.23	4.22	4.91	3154.21	149376.77	2006351.22	
7548.00	89.80	180.30	4712.56	-3185.23	4.14	1.16	3185.21	149345.77	2006351.14	
7579.00	89.80	179.10	4712.66	-3216.23	4.30	3.87	3216.21	149314.77	2006351.30	
7610.00	89.20	178.60	4712.93	-3247.22	4.93	2.52	3247.20	149283.78	2006351.93	
7642.00	90.20	178.70	4713.10	-3279.21	5.68	3.14	3279.20	149251.79	2006352.68	
7672.00	90.70	178.40	4712.87	-3309.20	6.44	1.94	3309.19	149221.80	2006353.44	
7703.00	90.20	178.70	4712.62	-3340.19	7.22	1.88	3340.18	149190.81	2006354.22	
7734.00	89.70	178.60	4712.65	-3371.18	7.95	1.64	3371.18	149159.82	2006354.95	
7764.00	90.10	178.90	4712.70	-3401.17	8.61	1.67	3401.17	149129.83	2006355.61	
7795.00	90.50	178.70	4712.54	-3432.17	9.26	1.44	3432.17	149098.83	2006356.26	
7826.00	89.70	179.10	4712.49	-3463.16	9.85	2.89	3463.17	149067.84	2006356.85	
7856.00	90.00	179.10	4712.56	-3493.16	10.32	1.00	3493.16	149037.84	2006357.32	
7887.00	90.70	178.60	4712.38	-3524.15	10.95	2.77	3524.16	149006.85	2006357.95	
7918.00	91.30	178.60	4711.83	-3555.14	11.70	1.94	3555.15	148975.86	2006358.70	
7948.00	90.80	178.70	4711.28	-3585.12	12.41	1.70	3585.14	148945.88	2006359.41	
7979.00	89.60	177.90	4711.18	-3616.11	13.33	4.65	3616.13	148914.89	2006360.33	
8009.00	88.60	178.00	4711.65	-3646.08	14.40	3.35	3646.11	148884.92	2006361.40	
8039.00	88.80	177.20	4712.33	-3676.05	15.66	2.75	3676.08	148854.95	2006362.66	
8070.00	90.40	177.90	4712.54	-3707.02	16.98	5.63	3707.06	148823.98	2006363.98	
8101.00	92.00	178.40	4711.90	-3738.00	17.98	5.41	3738.04	148793.00	2006364.98	
8132.00	92.70	178.70	4710.62	-3768.96	18.77	2.46	3769.01	148762.04	2006365.77	
8163.00	91.90	178.60	4709.38	-3799.93	19.50	2.60	3799.98	148731.07	2006366.50	
8194.00	92.30	179.00	4708.24	-3830.90	20.15	1.82	3830.95	148700.10	2006367.15	
8225.00	92.70	179.10	4706.89	-3861.86	20.66	1.33	3861.92	148669.14	2006367.66	
8257.00	92.60	179.10	4705.41	-3893.83	21.16	0.31	3893.88	148637.17	2006368.16	

Calmena Energy Services

Company: Woolsey Operating Company
 Well: Lincoln Trust #2-H
 Location:

Date: 13-Apr-2013
 Surveys
 Page 7
 Job# : 7136
 Gr elev=1375 RKB=1392

MD (feet)	Inclination (degrees)	Azimuth (degrees)	TVD RKB (feet)	N/S (feet)	E/W (feet)	DLS (deg/100')	VS @ 179.70° Az (feet)	Grid Y	Grid X	Comments
8287.00	91.80	179.10	4704.26	-3923.80	21.63	2.67	3923.86	148607.20	2006368.63	
8319.00	91.00	179.00	4703.48	-3955.79	22.16	2.52	3955.85	148575.21	2006369.16	
8350.00	90.10	179.30	4703.18	-3986.78	22.62	3.06	3986.84	148544.22	2006369.62	
8380.00	89.10	179.50	4703.39	-4016.78	22.94	3.40	4016.84	148514.22	2006369.94	
8410.00	89.70	180.00	4703.71	-4046.78	23.07	2.60	4046.84	148484.22	2006370.07	
8441.00	89.90	179.50	4703.81	-4077.78	23.20	1.74	4077.84	148453.23	2006370.20	
8471.00	89.40	180.00	4704.00	-4107.77	23.33	2.36	4107.84	148423.23	2006370.33	
8502.00	88.80	179.80	4704.48	-4138.77	23.39	2.04	4138.84	148392.23	2006370.39	
8533.00	89.10	180.20	4705.05	-4169.77	23.39	1.61	4169.83	148361.24	2006370.39	
8564.00	88.50	180.20	4705.70	-4200.76	23.28	1.94	4200.82	148330.24	2006370.28	
8595.00	87.40	180.40	4706.81	-4231.74	23.12	3.61	4231.80	148299.26	2006370.12	
8625.00	87.90	180.20	4708.04	-4261.71	22.96	1.79	4261.77	148269.29	2006369.96	
8656.00	88.10	179.80	4709.12	-4292.69	22.96	1.44	4292.75	148238.31	2006369.96	
8686.00	88.10	179.80	4710.12	-4322.68	23.06	0.00	4322.74	148208.33	2006370.06	
8717.00	88.10	179.80	4711.14	-4353.66	23.17	0.00	4353.72	148177.34	2006370.17	
8747.00	88.90	179.50	4711.93	-4383.65	23.36	2.85	4383.71	148147.35	2006370.36	
8779.00	89.50	180.20	4712.38	-4415.64	23.44	2.88	4415.71	148115.36	2006370.44	
8809.00	90.50	180.40	4712.38	-4445.64	23.28	3.40	4445.70	148085.36	2006370.28	
8841.00	90.60	180.00	4712.07	-4477.64	23.17	1.29	4477.70	148053.36	2006370.17	
8871.00	90.40	180.20	4711.81	-4507.64	23.12	0.94	4507.70	148023.36	2006370.12	
8902.00	90.70	180.00	4711.51	-4538.64	23.06	1.16	4538.70	147992.36	2006370.06	
8912.00	90.70	180.00	4711.39	-4548.64	23.06	0.00	4548.70	147982.36	2006370.06	
8958.00	90.70	180.00	4710.83	-4594.63	23.06	0.00	4594.69	147936.37	2006370.06	Survey projected