



DRILL STEM TEST REPORT

Prepared For: **Oil Producers Inc. Of Kansas**

1710 Waterfront Pkwy.
Wichita, KS 67206-6603

ATTN: Mac Armstrong

Sealey A #1

28-28s-12w Pratt,KS

Start Date: 2013.01.31 @ 20:27:07

End Date: 2013.02.01 @ 04:22:07

Job Ticket #: 49725 DST #: 1

Trilobite Testing, Inc
PO Box 362 Hays, KS 67601
ph: 785-625-4778 fax: 785-625-5620

Printed: 2013.02.07 @ 08:32:13



TRILOBITE TESTING, INC.

DRILL STEM TEST REPORT

Oil Producers Inc. Of Kansas

28-28s-12w Pratt,KS

1710 Waterfront Pkw y.
Wichita, KS 67206-6603

Sealey A #1

Job Ticket: 49725

DST#: 1

ATTN: Mac Armstrong

Test Start: 2013.01.31 @ 20:27:07

GENERAL INFORMATION:

Formation: **Lansing**

Deviated: No Whipstock: ft (KB)

Time Tool Opened: 22:44:52

Time Test Ended: 04:22:07

Test Type: Conventional Bottom Hole (Initial)

Tester: Ryan Reynolds

Unit No: 63

Interval: 3880.00 ft (KB) To 3920.00 ft (KB) (TVD)

Reference Elevations: 1902.00 ft (KB)

Total Depth: 3920.00 ft (KB) (TVD)

1892.00 ft (CF)

Hole Diameter: 7.88 inches Hole Condition: Fair

KB to GR/CF: 10.00 ft

Serial #: 8790

Inside

Press @ RunDepth: 107.20 psig @ 3881.00 ft (KB)

Capacity: 8000.00 psig

Start Date: 2013.01.31

End Date:

2013.02.01

Last Calib.:

2013.02.01

Start Time: 20:27:12

End Time:

04:22:06

Time On Btm:

2013.01.31 @ 22:43:37

Time Off Btm:

2013.02.01 @ 01:48:37

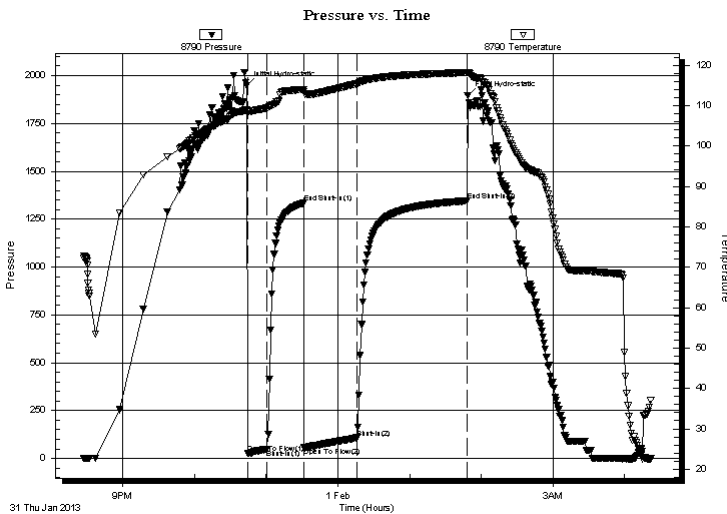
TEST COMMENT: IF: Good blow . 1/2" - 9"

IS: No blow

FF: Good blow . 1/4" - 11"

FS: No blow

PRESSURE SUMMARY



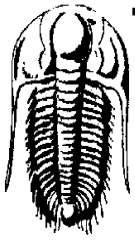
Time (Min.)	Pressure (psig)	Temp (deg F)	Annotation
0	1947.06	108.91	Initial Hydro-static
2	26.13	108.65	Open To Flow (1)
17	49.52	109.43	Shut-In(1)
48	1334.00	113.97	End Shut-In(1)
48	55.97	113.39	Open To Flow (2)
93	107.20	115.43	Shut-In(2)
184	1345.74	118.18	End Shut-In(2)
185	1896.14	118.21	Final Hydro-static

Recovery

Length (ft)	Description	Volume (bbl)
80.00	SLI OCWM trc%oil, 15% mud, 85% w tr	1.12
115.00	SLI OCWM trc%oil, 10% w tr, 90% mud	1.61

Gas Rates

Choke (inches)	Pressure (psig)	Gas Rate (Mcf/d)



**TRILOBITE
TESTING, INC.**

DRILL STEM TEST REPORT

Oil Producers Inc. Of Kansas
1710 Waterfront Pkw y.
Wichita, KS 67206-6603
ATTN: Mac Armstrong

28-28s-12w Pratt,KS

Sealey A #1

Job Ticket: 49725

DST#: 1

Test Start: 2013.01.31 @ 20:27:07

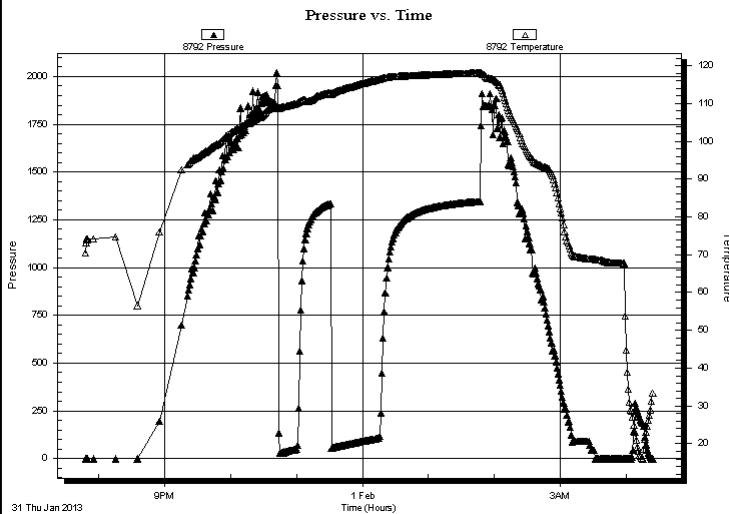
GENERAL INFORMATION:

Formation: **Lansing**
Deviated: No Whipstock: ft (KB)
Time Tool Opened: 22:44:52
Time Test Ended: 04:22:07
Interval: **3880.00 ft (KB) To 3920.00 ft (KB) (TVD)**
Total Depth: 3920.00 ft (KB) (TVD)
Hole Diameter: 7.88 inches Hole Condition: Fair
Reference Elevations: 1902.00 ft (KB)
1892.00 ft (CF)
KB to GR/CF: 10.00 ft
Test Type: Conventional Bottom Hole (Initial)
Tester: Ryan Reynolds
Unit No: 63

Serial #: 8792 Outside

Press @ RunDepth: psig @ 3881.00 ft (KB) Capacity: 8000.00 psig
Start Date: 2013.01.31 End Date: 2013.02.01 Last Calib.: 2013.02.01
Start Time: 19:48:11 End Time: 04:24:06 Time On Btm:
Time Off Btm:

TEST COMMENT: IF: Good blow . 1/2" - 9"
IS: No blow
FF: Good blow . 1/4" - 11"
FS: No blow



PRESSURE SUMMARY

Time (Min.)	Pressure (psig)	Temp (deg F)	Annotation

Recovery

Length (ft)	Description	Volume (bbl)
80.00	SLI OCMW trc%oil, 15%mud, 85%w tr	1.12
115.00	SLI OCMW trc%oil, 10%w tr, 90%mud	1.61

Gas Rates

Choke (inches)	Pressure (psig)	Gas Rate (Mcf/d)



**TRILOBITE
TESTING, INC.**

DRILL STEM TEST REPORT

TOOL DIAGRAM

Oil Producers Inc. Of Kansas

28-28s-12w Pratt,KS

1710 Waterfront Pkwy.
Wichita, KS 67206-6603

Sealey A #1

Job Ticket: 49725

DST#: 1

ATTN: Mac Armstrong

Test Start: 2013.01.31 @ 20:27:07

Tool Information

Drill Pipe:	Length: 3862.00 ft	Diameter: 3.80 inches	Volume: 54.17 bbl	Tool Weight: 2400.00 lb
Heavy Wt. Pipe:	Length: 0.00 ft	Diameter: 0.00 inches	Volume: 0.00 bbl	Weight set on Packer: 25000.00 lb
Drill Collar:	Length: 0.00 ft	Diameter: 0.00 inches	Volume: 0.00 bbl	Weight to Pull Loose: 69000.00 lb
			<u>Total Volume: 54.17 bbl</u>	Tool Chased 0.00 ft
Drill Pipe Above KB:	10.00 ft			String Weight: Initial 56000.00 lb
Depth to Top Packer:	3880.00 ft			Final 57000.00 lb
Depth to Bottom Packer:	ft			
Interval between Packers:	40.00 ft			
Tool Length:	68.00 ft			
Number of Packers:	2	Diameter: 6.50 inches		

Tool Comments:

Tool Description	Length (ft)	Serial No.	Position	Depth (ft)	Accum. Lengths
------------------	-------------	------------	----------	------------	----------------

Change Over Sub	1.00			3853.00	
Shut In Tool	5.00			3858.00	
Hydraulic tool	5.00			3863.00	
Jars	5.00			3868.00	
Safety Joint	3.00			3871.00	
Packer	5.00			3876.00	28.00 Bottom Of Top Packer
Packer	4.00			3880.00	
Stubb	1.00			3881.00	
Recorder	0.00	8790	Inside	3881.00	
Recorder	0.00	8792	Outside	3881.00	
Perforations	1.00			3882.00	
Change Over Sub	1.00			3883.00	
Drill Pipe	31.00			3914.00	
Change Over Sub	1.00			3915.00	
Perforations	2.00			3917.00	
Bullnose	3.00			3920.00	40.00 Bottom Packers & Anchor
Total Tool Length:	68.00				



**TRILOBITE
TESTING, INC.**

DRILL STEM TEST REPORT

FLUID SUMMARY

Oil Producers Inc. Of Kansas

28-28s-12w Pratt,KS

1710 Waterfront Pkw y.
Wichita, KS 67206-6603

Sealey A #1

Job Ticket: 49725

DST#: 1

ATTN: Mac Armstrong

Test Start: 2013.01.31 @ 20:27:07

Mud and Cushion Information

Mud Type: Gel Chem

Cushion Type:

Oil API:

deg API

Mud Weight: 9.00 lb/gal

Cushion Length:

ft

Water Salinity:

95000 ppm

Viscosity: 62.00 sec/qt

Cushion Volume:

bbbl

Water Loss: 8.76 in³

Gas Cushion Type:

Resistivity: ohm.m

Gas Cushion Pressure:

psig

Salinity: 3000.00 ppm

Filter Cake: 0.02 inches

Recovery Information

Recovery Table

Length ft	Description	Volume bbbl
80.00	SLI OCMW trc%oil, 15%mud, 85%w tr	1.122
115.00	SLI OCWM trc%oil, 10%w tr, 90%mud	1.613

Total Length: 195.00 ft

Total Volume: 2.735 bbl

Num Fluid Samples: 0

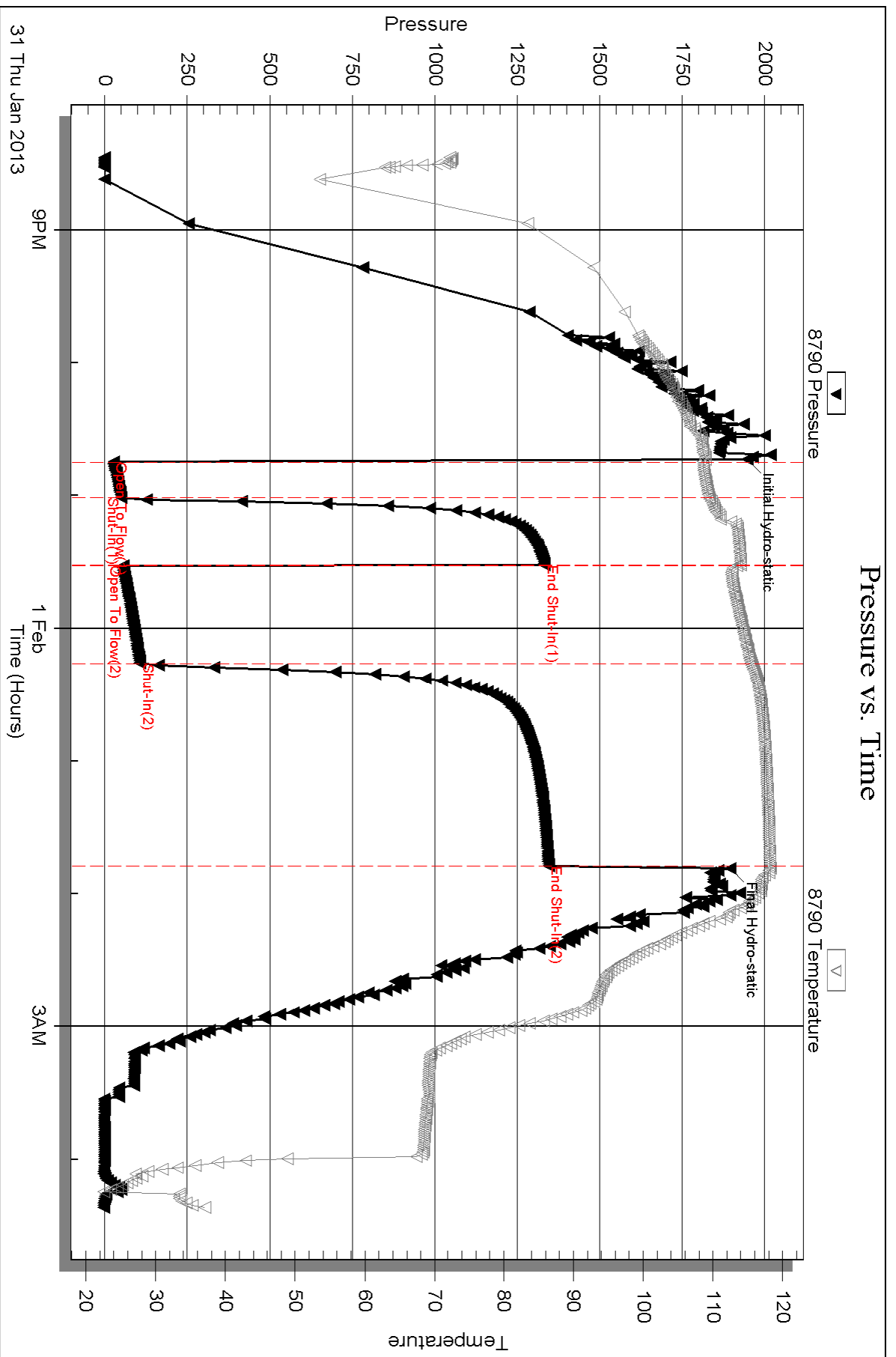
Num Gas Bombs: 0

Serial #: none

Laboratory Name:

Laboratory Location:

Recovery Comments:

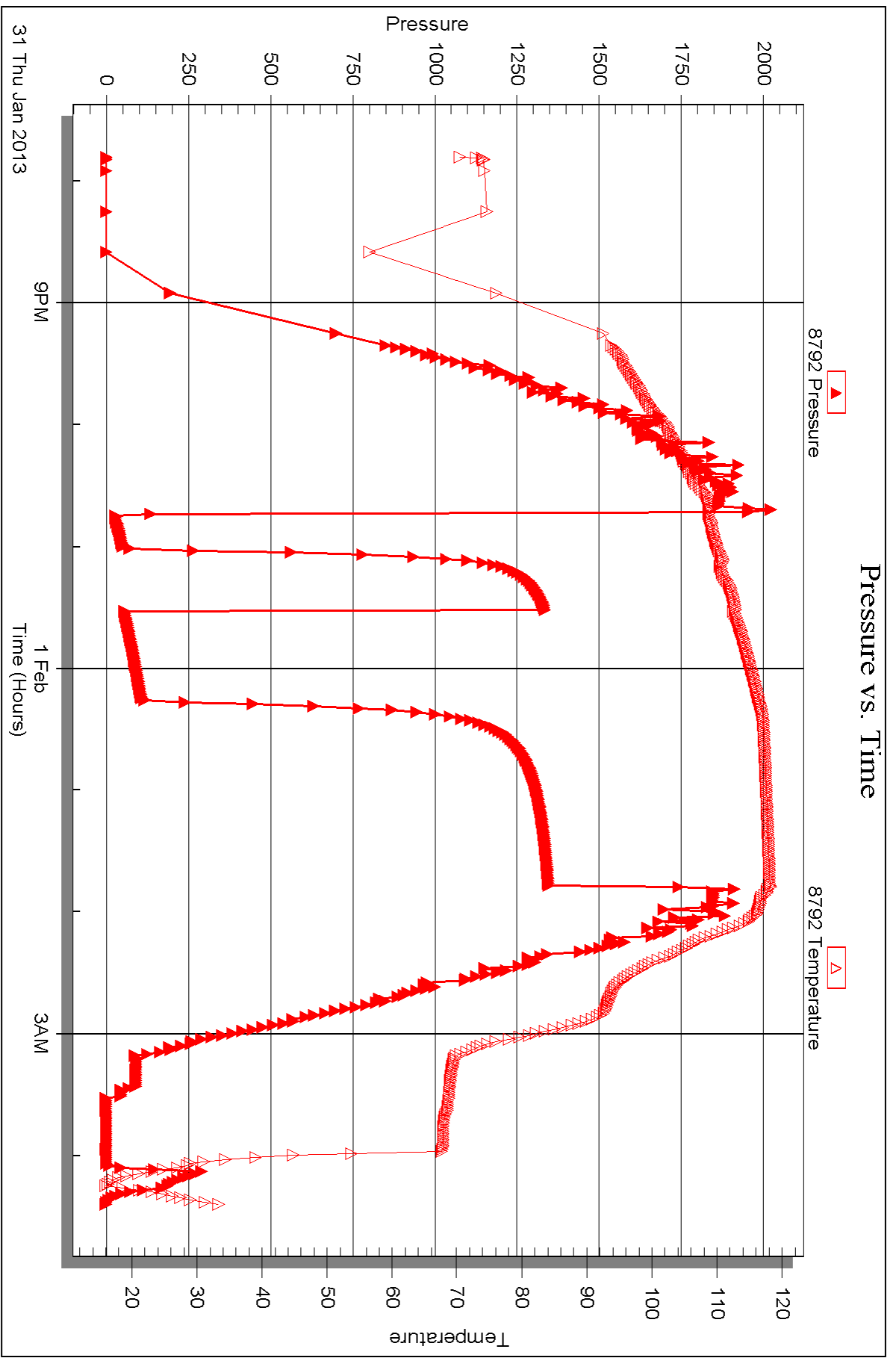


Serial #: 8792

Outside Oil Producers Inc. Of Kansas

Sealey A #1

DST Test Number: 1



Triobite Testing, Inc

Ref. No: 49725

Printed: 2013.02.07 @ 08:32:15



DRILL STEM TEST REPORT

Prepared For: **Oil Producers Inc. Of Kansas**

1710 Waterfront Pkwy.
Wichita, KS 67206-6603

ATTN: Mac Armstrong

Sealey A #1

28-28s-12w Pratt,KS

Start Date: 2013.02.01 @ 21:27:22

End Date: 2013.02.02 @ 06:23:37

Job Ticket #: 50851 DST #: 2

Trilobite Testing, Inc
PO Box 362 Hays, KS 67601
ph: 785-625-4778 fax: 785-625-5620

Printed: 2013.02.07 @ 08:31:36



**TRILOBITE
TESTING, INC.**

DRILL STEM TEST REPORT

Oil Producers Inc. Of Kansas

28-28s-12w Pratt,KS

1710 Waterfront Pkwy.
Wichita, KS 67206-6603

Sealey A #1

Job Ticket: 50851

DST#: 2

ATTN: Mac Armstrong

Test Start: 2013.02.01 @ 21:27:22

GENERAL INFORMATION:

Formation: **Lansing**

Deviated: No Whipstock: ft (KB)

Time Tool Opened: 00:12:52

Time Test Ended: 06:23:37

Test Type: Conventional Bottom Hole (Reset)

Tester: Ryan Reynolds

Unit No: 63

Interval: 4048.00 ft (KB) To 4074.00 ft (KB) (TVD)

Reference Elevations: 1902.00 ft (KB)

Total Depth: 4074.00 ft (KB) (TVD)

1892.00 ft (CF)

Hole Diameter: 7.88 inches Hole Condition: Fair

KB to GR/CF: 10.00 ft

Serial #: 8790 Inside

Press @ RunDepth: 33.83 psig @ 4049.00 ft (KB)

Capacity: 8000.00 psig

Start Date: 2013.02.01

End Date:

2013.02.02

Last Calib.: 2013.02.02

Start Time: 21:27:27

End Time:

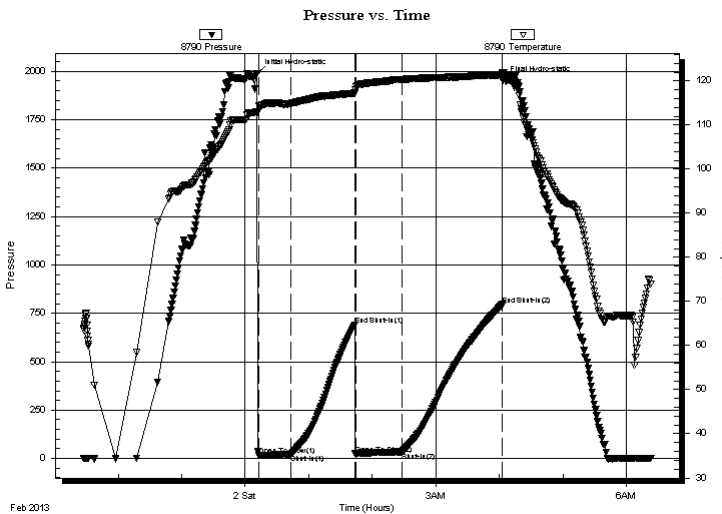
06:23:37

Time On Btm: 2013.02.02 @ 00:11:22

Time Off Btm: 2013.02.02 @ 04:03:07

TEST COMMENT: IF: Strong blow . BOB 7 min. No GTS.
IS: No blow
FF: Strong blow . 1/4" - BOB 44 min. No GTS.
FS: No blow

PRESSURE SUMMARY



Time (Min.)	Pressure (psig)	Temp (deg F)	Annotation
0	1988.96	113.04	Initial Hydro-static
2	15.05	114.30	Open To Flow (1)
32	21.41	114.91	Shut-In(1)
92	690.31	117.25	End Shut-In(1)
93	22.18	117.88	Open To Flow (2)
137	33.83	120.37	Shut-In(2)
232	795.03	121.41	End Shut-In(2)
232	1951.79	121.93	Final Hydro-static

Recovery

Length (ft)	Description	Volume (bbl)
45.00	SLI OCWGM 1%oil, 5%w tr, 19%gas, 75%	90.63

Gas Rates

Choke (inches)	Pressure (psig)	Gas Rate (Mcf/d)

* Recovery from multiple tests



TRILOBITE TESTING, INC.

DRILL STEM TEST REPORT

Oil Producers Inc. Of Kansas

28-28s-12w Pratt,KS

1710 Waterfront Pkwy.
Wichita, KS 67206-6603

Sealey A #1

Job Ticket: 50851

DST#: 2

ATTN: Mac Armstrong

Test Start: 2013.02.01 @ 21:27:22

GENERAL INFORMATION:

Formation: **Lansing**

Deviated: No Whipstock: ft (KB)

Time Tool Opened: 00:12:52

Time Test Ended: 06:23:37

Test Type: Conventional Bottom Hole (Reset)

Tester: Ryan Reynolds

Unit No: 63

Interval: 4048.00 ft (KB) To 4074.00 ft (KB) (TVD)

Total Depth: 4074.00 ft (KB) (TVD)

Hole Diameter: 7.88 inches Hole Condition: Fair

Reference Elevations: 1902.00 ft (KB)

1892.00 ft (CF)

KB to GR/CF: 10.00 ft

Serial #: 8792 Outside

Press @RunDepth: psig @ 4049.00 ft (KB)

Start Date: 2013.02.01 End Date: 2013.02.02

Start Time: 21:22:55 End Time: 06:25:05

Capacity: 8000.00 psig

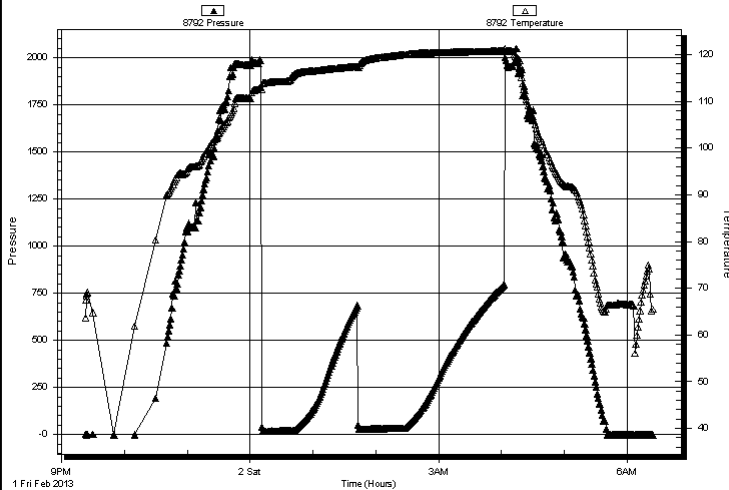
Last Calib.: 2013.02.02

Time On Btm:

Time Off Btm:

TEST COMMENT: IF: Strong blow . BOB 7 min. No GTS.
IS: No blow
FF: Strong blow . 1/4" - BOB 44 min. No GTS.
FS: No blow

Pressure vs. Time



PRESSURE SUMMARY

Time (Min.)	Pressure (psig)	Temp (deg F)	Annotation

Recovery

Length (ft)	Description	Volume (bbl)
45.00	SLI OCWGM 1%oil, 5%w tr, 19%gas, 75%0.63d	

Gas Rates

Choke (inches)	Pressure (psig)	Gas Rate (Mcf/d)

* Recovery from multiple tests



**TRILOBITE
TESTING, INC.**

DRILL STEM TEST REPORT

TOOL DIAGRAM

Oil Producers Inc. Of Kansas

28-28s-12w Pratt,KS

1710 Waterfront Pkwy.
Wichita, KS 67206-6603

Sealey A #1

Job Ticket: 50851

DST#: 2

ATTN: Mac Armstrong

Test Start: 2013.02.01 @ 21:27:22

Tool Information

Drill Pipe:	Length: 4045.00 ft	Diameter: 3.80 inches	Volume: 56.74 bbl	Tool Weight: 2400.00 lb
Heavy Wt. Pipe:	Length: 0.00 ft	Diameter: 0.00 inches	Volume: 0.00 bbl	Weight set on Packer: 25000.00 lb
Drill Collar:	Length: 0.00 ft	Diameter: 0.00 inches	Volume: 0.00 bbl	Weight to Pull Loose: 69000.00 lb
			<u>Total Volume: 56.74 bbl</u>	Tool Chased 0.00 ft
Drill Pipe Above KB:	25.00 ft			String Weight: Initial 61000.00 lb
Depth to Top Packer:	4048.00 ft			Final 61000.00 lb
Depth to Bottom Packer:	ft			
Interval between Packers:	26.00 ft			
Tool Length:	54.00 ft			
Number of Packers:	2	Diameter: 6.50 inches		

Tool Comments:

Tool Description	Length (ft)	Serial No.	Position	Depth (ft)	Accum. Lengths
------------------	-------------	------------	----------	------------	----------------

Change Over Sub	1.00			4021.00	
Shut In Tool	5.00			4026.00	
Hydraulic tool	5.00			4031.00	
Jars	5.00			4036.00	
Safety Joint	3.00			4039.00	
Packer	5.00			4044.00	28.00 Bottom Of Top Packer
Packer	4.00			4048.00	
Stubb	1.00			4049.00	
Recorder	0.00	8790	Inside	4049.00	
Recorder	0.00	8792	Outside	4049.00	
Perforations	22.00			4071.00	
Bullnose	3.00			4074.00	26.00 Bottom Packers & Anchor

Total Tool Length: 54.00



**TRILOBITE
TESTING, INC.**

DRILL STEM TEST REPORT

FLUID SUMMARY

Oil Producers Inc. Of Kansas

28-28s-12w Pratt,KS

1710 Waterfront Pkw y.
Wichita, KS 67206-6603

Sealey A #1

Job Ticket: 50851

DST#: 2

ATTN: Mac Armstrong

Test Start: 2013.02.01 @ 21:27:22

Mud and Cushion Information

Mud Type: Gel Chem

Cushion Type:

Oil API:

deg API

Mud Weight: 9.00 lb/gal

Cushion Length:

ft

Water Salinity:

97000 ppm

Viscosity: 58.00 sec/qt

Cushion Volume:

bbbl

Water Loss: 7.97 in³

Gas Cushion Type:

Resistivity: ohm.m

Gas Cushion Pressure:

psig

Salinity: 3800.00 ppm

Filter Cake: 0.02 inches

Recovery Information

Recovery Table

Length ft	Description	Volume bbl
45.00	SLI OCWGM 1%oil, 5%w tr, 19%gas, 75%mu	0.631

Total Length: 45.00 ft Total Volume: 0.631 bbl

Num Fluid Samples: 0

Num Gas Bombs: 0

Serial #: none

Laboratory Name:

Laboratory Location:

Recovery Comments:

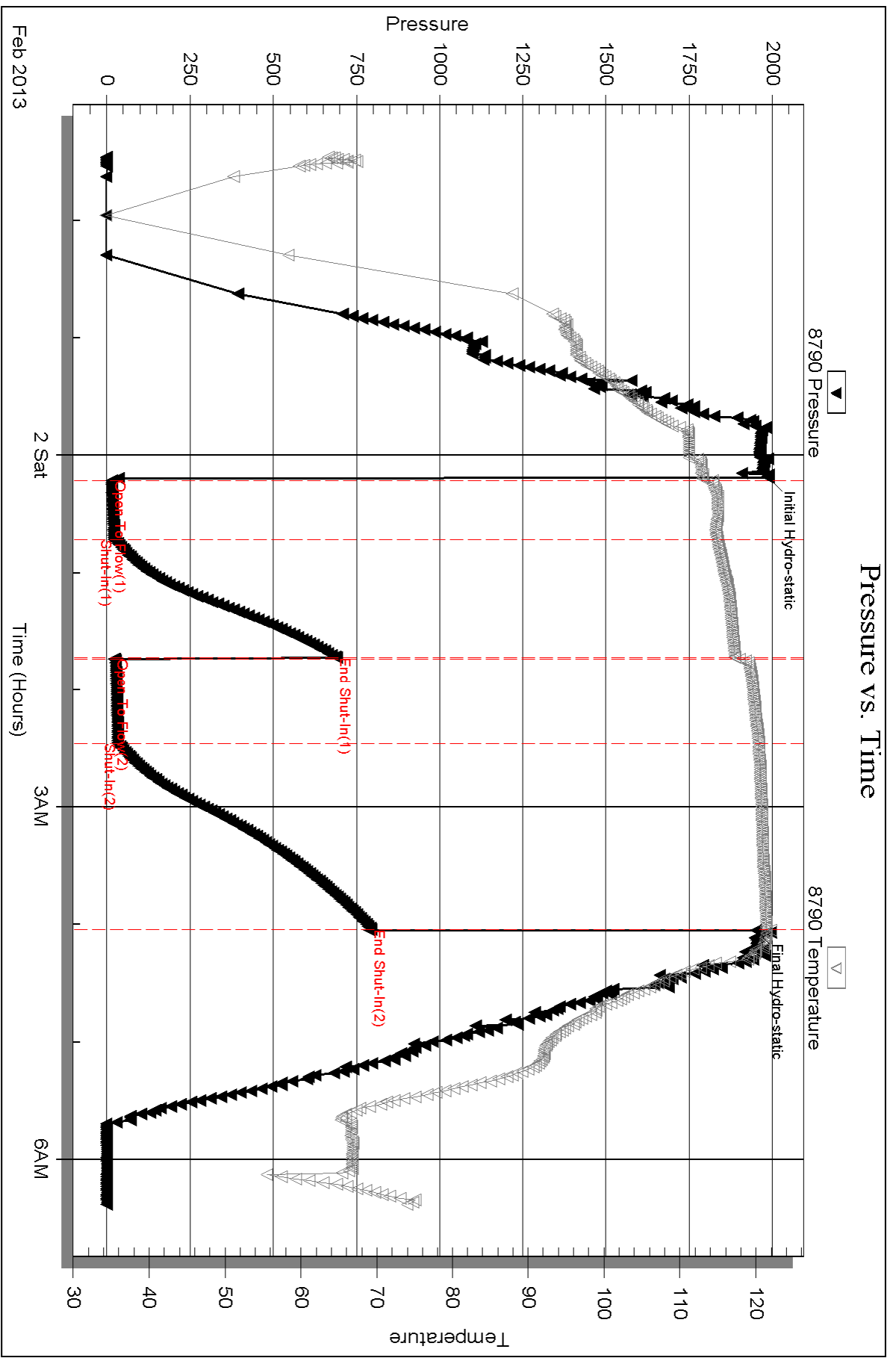
Serial #: 8790

Inside

Oil Producers Inc. Of Kansas

Sealey A #1

DST Test Number: 2



Triobite Testing, Inc

Ref. No: 50851

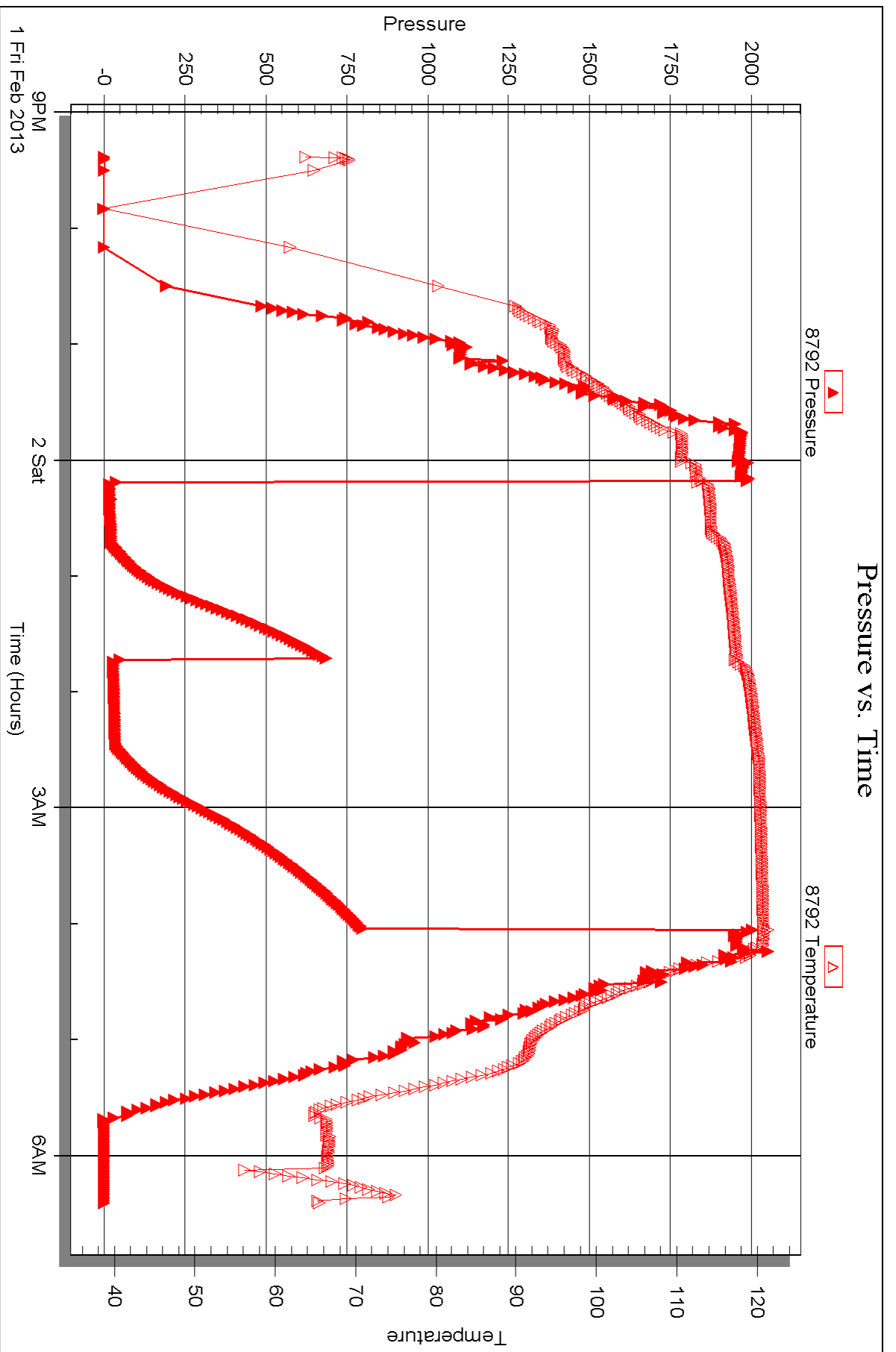
Printed: 2013.02.07 @ 08:31:39

Serial #: 8792

Outside Oil Producers Inc. Of Kansas

Sealey A #1

DST Test Number: 2



Triobite Testing, Inc

Ref. No: 50851

Printed: 2013.02.07 @ 08:31:39



DRILL STEM TEST REPORT

Prepared For: **Oil Producers Inc. Of Kansas**

1710 Waterfront Pkwy.
Wichita, KS 67206-6603

ATTN: Mac Armstrong

Sealey A #1

28-28s-12w Pratt,KS

Start Date: 2013.02.03 @ 00:41:27

End Date: 2013.02.03 @ 08:47:42

Job Ticket #: 50852 DST #: 3

Trilobite Testing, Inc
PO Box 362 Hays, KS 67601
ph: 785-625-4778 fax: 785-625-5620

Printed: 2013.02.07 @ 08:31:01



**TRILOBITE
TESTING, INC.**

DRILL STEM TEST REPORT

Oil Producers Inc. Of Kansas

28-28s-12w Pratt,KS

1710 Waterfront Pkw y.
Wichita, KS 67206-6603

Sealey A #1

Job Ticket: 50852

DST#: 3

ATTN: Mac Armstrong

Test Start: 2013.02.03 @ 00:41:27

GENERAL INFORMATION:

Formation: **Mississippi**
 Deviated: No Whipstock: ft (KB)
 Time Tool Opened: 03:28:12
 Time Test Ended: 08:47:42
 Interval: **4214.00 ft (KB) To 4252.00 ft (KB) (TVD)**
 Total Depth: 4252.00 ft (KB) (TVD)
 Hole Diameter: 7.88 inches Hole Condition: Fair
 Test Type: Conventional Bottom Hole (Reset)
 Tester: Ryan Reynolds
 Unit No: 63
 Reference Elevations: 1902.00 ft (KB)
 1892.00 ft (CF)
 KB to GR/CF: 10.00 ft

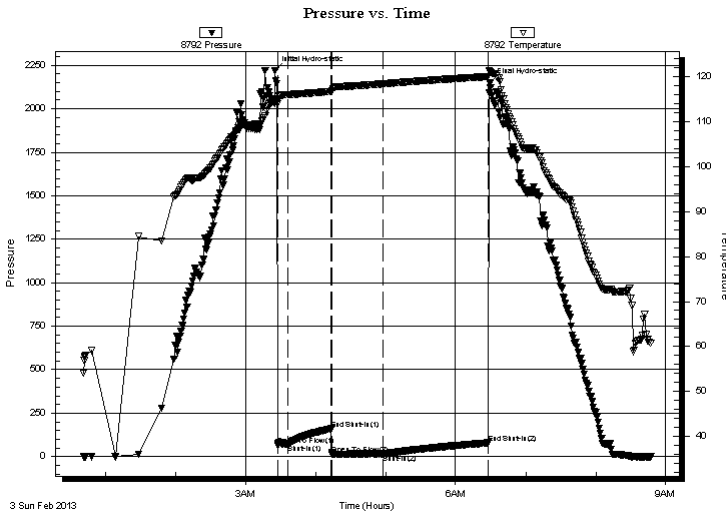
Serial #: 8792

Outside

Press @ RunDepth: 14.09 psig @ 4215.00 ft (KB)
 Start Date: 2013.02.03 End Date: 2013.02.03
 Start Time: 00:41:32 End Time: 08:47:41
 Capacity: 8000.00 psig
 Last Calib.: 2013.02.03
 Time On Btm: 2013.02.03 @ 03:25:27
 Time Off Btm: 2013.02.03 @ 06:29:12

TEST COMMENT: IF: Good blow . 1/4" - 11"
 IS: No blow
 FF: Good blow . 6" - 11"
 FS: No blow

PRESSURE SUMMARY



Time (Min.)	Pressure (psig)	Temp (deg F)	Annotation
0	2220.96	114.44	Initial Hydro-static
3	65.19	114.90	Open To Flow (1)
11	68.81	116.06	Shut-In(1)
48	159.40	116.78	End Shut-In(1)
49	11.55	116.87	Open To Flow (2)
93	14.09	118.47	Shut-In(2)
183	79.29	120.09	End Shut-In(2)
184	2148.80	121.27	Final Hydro-static

Recovery

Length (ft)	Description	Volume (bbl)
10.00	Drig mud 100%mud	0.14

* Recovery from multiple tests

Gas Rates

Choke (inches)	Pressure (psig)	Gas Rate (Mcf/d)



**TRILOBITE
TESTING, INC.**

DRILL STEM TEST REPORT

TOOL DIAGRAM

Oil Producers Inc. Of Kansas

28-28s-12w Pratt,KS

1710 Waterfront Pkwy.
Wichita, KS 67206-6603

Sealey A #1

Job Ticket: 50852

DST#: 3

ATTN: Mac Armstrong

Test Start: 2013.02.03 @ 00:41:27

Tool Information

Drill Pipe:	Length: 4200.00 ft	Diameter: 3.80 inches	Volume: 58.91 bbl	Tool Weight:	2400.00 lb
Heavy Wt. Pipe:	Length: 0.00 ft	Diameter: 0.00 inches	Volume: 0.00 bbl	Weight set on Packer:	25000.00 lb
Drill Collar:	Length: 0.00 ft	Diameter: 0.00 inches	Volume: 0.00 bbl	Weight to Pull Loose:	71000.00 lb
			<u>Total Volume: 58.91 bbl</u>	Tool Chased	0.00 ft
Drill Pipe Above KB:	14.00 ft			String Weight: Initial	62000.00 lb
Depth to Top Packer:	4214.00 ft			Final	62000.00 lb
Depth to Bottom Packer:	ft				
Interval between Packers:	38.00 ft				
Tool Length:	66.00 ft				
Number of Packers:	2	Diameter: 6.50 inches			

Tool Comments: Recorder 8790 did not record any data

Tool Description	Length (ft)	Serial No.	Position	Depth (ft)	Accum. Lengths
Change Over Sub	1.00			4187.00	
Shut In Tool	5.00			4192.00	
Hydraulic tool	5.00			4197.00	
Jars	5.00			4202.00	
Safety Joint	3.00			4205.00	
Packer	5.00			4210.00	28.00 Bottom Of Top Packer
Packer	4.00			4214.00	
Stubb	1.00			4215.00	
Recorder	0.00	8790	Inside	4215.00	
Recorder	0.00	8792	Outside	4215.00	
Perforations	34.00			4249.00	
Bullnose	3.00			4252.00	38.00 Bottom Packers & Anchor

Total Tool Length: 66.00



**TRILOBITE
TESTING, INC.**

DRILL STEM TEST REPORT

FLUID SUMMARY

Oil Producers Inc. Of Kansas

28-28s-12w Pratt,KS

1710 Waterfront Pkw y.
Wichita, KS 67206-6603

Sealey A #1

Job Ticket: 50852

DST#: 3

ATTN: Mac Armstrong

Test Start: 2013.02.03 @ 00:41:27

Mud and Cushion Information

Mud Type: Gel Chem

Cushion Type:

Oil API:

deg API

Mud Weight: 9.00 lb/gal

Cushion Length:

ft

Water Salinity:

5200 ppm

Viscosity: 55.00 sec/qt

Cushion Volume:

bbf

Water Loss: 7.99 in³

Gas Cushion Type:

Resistivity: ohm.m

Gas Cushion Pressure:

psig

Salinity: 5200.00 ppm

Filter Cake: 0.02 inches

Recovery Information

Recovery Table

Length ft	Description	Volume bbf
10.00	Drig mud 100%mud	0.140

Total Length: 10.00 ft Total Volume: 0.140 bbf

Num Fluid Samples: 0

Num Gas Bombs: 0

Serial #: none

Laboratory Name:

Laboratory Location:

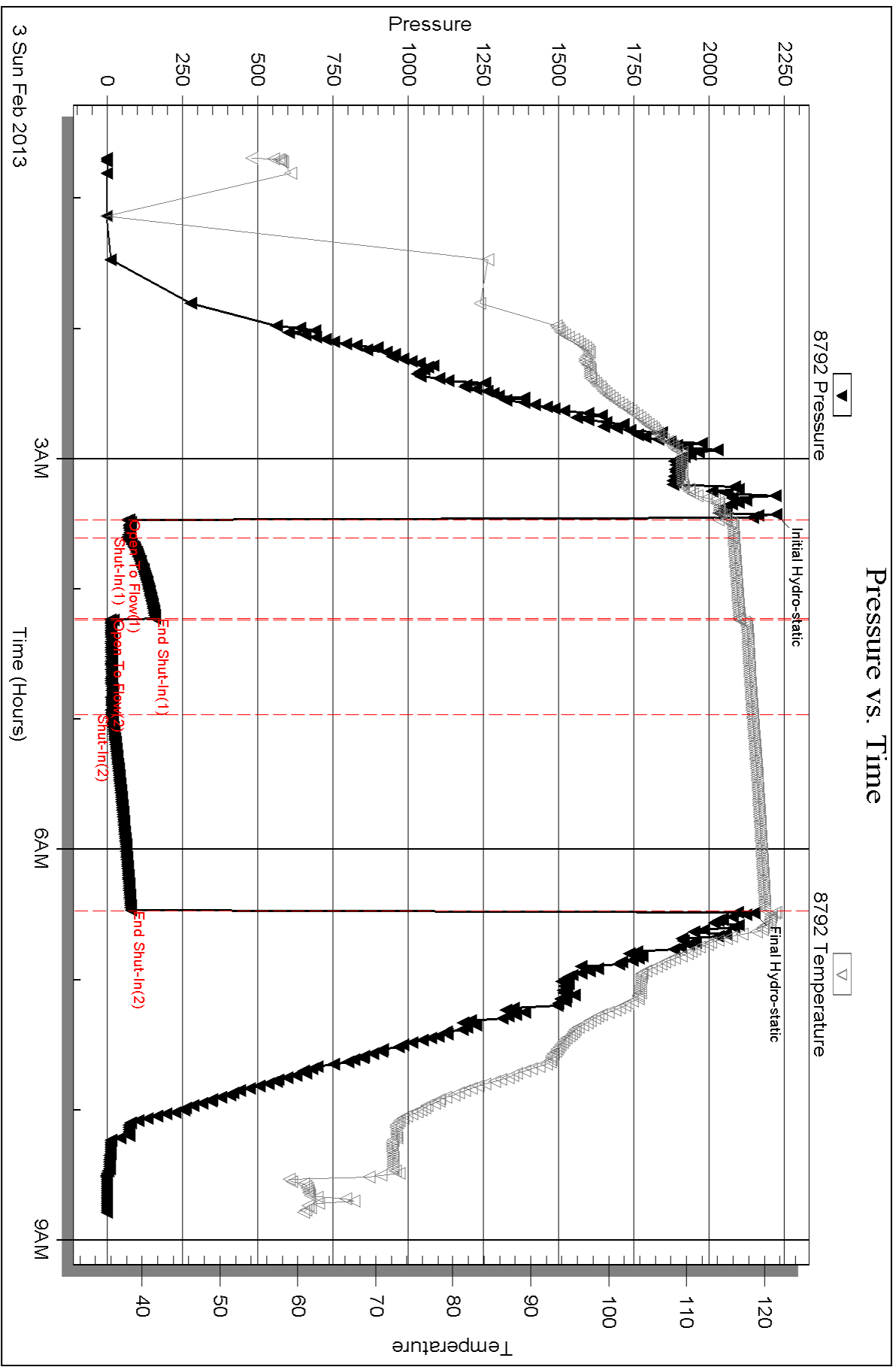
Recovery Comments:

Serial #: 8792

Outside Oil Producers Inc. Of Kansas

Sealey A #1

DST Test Number: 3





DRILL STEM TEST REPORT

Prepared For: **Oil Producers Inc. Of Kansas**

1710 Waterfront Pkwy.
Wichita, KS 67206-6603

ATTN: Mac Armstrong

Sealey A #1

28-28s-12w Pratt,KS

Start Date: 2013.02.04 @ 07:51:33

End Date: 2013.02.04 @ 15:18:03

Job Ticket #: 50853 DST #: 4

Trilobite Testing, Inc
PO Box 362 Hays, KS 67601
ph: 785-625-4778 fax: 785-625-5620

Printed: 2013.02.07 @ 08:30:20



TRILOBITE TESTING, INC.

DRILL STEM TEST REPORT

Oil Producers Inc. Of Kansas

28-28s-12w Pratt, KS

1710 Waterfront Pkwy.
Wichita, KS 67206-6603

Sealey A #1

Job Ticket: 50853

DST#: 4

ATTN: Mac Armstrong

Test Start: 2013.02.04 @ 07:51:33

GENERAL INFORMATION:

Formation: **Simpson Sand**

Deviated: No Whipstock: ft (KB)

Time Tool Opened: 09:57:03

Time Test Ended: 15:18:03

Test Type: Conventional Bottom Hole (Reset)

Tester: Ryan Reynolds

Unit No: 63

Interval: 4470.00 ft (KB) To 4490.00 ft (KB) (TVD)

Reference Elevations: 1902.00 ft (KB)

Total Depth: 4490.00 ft (KB) (TVD)

1892.00 ft (CF)

Hole Diameter: 7.88 inches Hole Condition: Fair

KB to GR/CF: 10.00 ft

Serial #: 8790

Inside

Press @RunDepth: 33.64 psig @ 4471.00 ft (KB)

Capacity: 8000.00 psig

Start Date: 2013.02.04

End Date:

2013.02.04

Last Calib.:

2013.02.04

Start Time: 07:51:38

End Time:

15:18:02

Time On Btm:

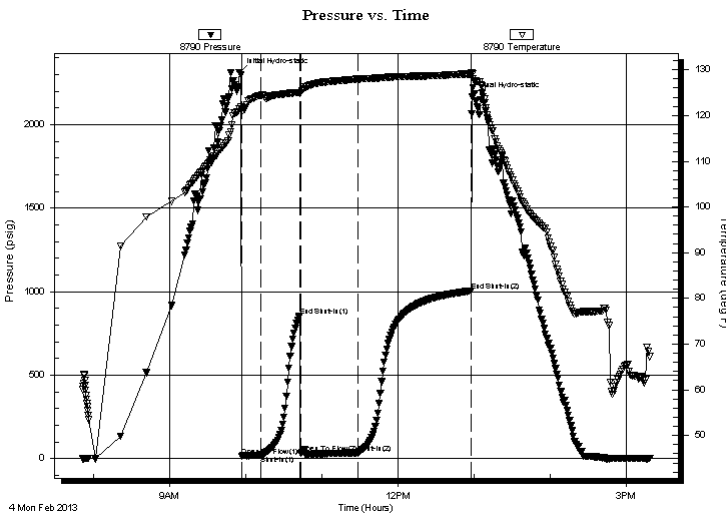
2013.02.04 @ 09:55:03

Time Off Btm:

2013.02.04 @ 12:58:33

TEST COMMENT: IF: Fair blow . 1/4" - 6"
IS: No blow
FF: Fair blow . 1/4" - 6"
FS: NO blow

PRESSURE SUMMARY



Time (Min.)	Pressure (psig)	Temp (deg F)	Annotation
0	2313.42	121.50	Initial Hydro-static
2	12.09	121.23	Open To Flow (1)
17	19.63	124.42	Shut-In(1)
48	853.28	125.01	End Shut-In(1)
48	30.35	124.87	Open To Flow (2)
94	33.64	127.99	Shut-In(2)
183	1004.26	128.95	End Shut-In(2)
184	2166.66	129.13	Final Hydro-static

Recovery

Length (ft)	Description	Volume (bbl)
60.00	SLI OCWM 2%oil, 10%w tr, 88%mud	0.84
30.00	Drig mud 100%mud	0.42

Gas Rates

	Choke (inches)	Pressure (psig)	Gas Rate (Mcf/d)

* Recovery from multiple tests



TRILOBITE TESTING, INC.

DRILL STEM TEST REPORT

Oil Producers Inc. Of Kansas

28-28s-12w Pratt, KS

1710 Waterfront Pkwy.
Wichita, KS 67206-6603

Sealey A #1

Job Ticket: 50853

DST#: 4

ATTN: Mac Armstrong

Test Start: 2013.02.04 @ 07:51:33

GENERAL INFORMATION:

Formation: **Simpson Sand**

Deviated: No Whipstock: ft (KB)

Time Tool Opened: 09:57:03

Time Test Ended: 15:18:03

Test Type: Conventional Bottom Hole (Reset)

Tester: Ryan Reynolds

Unit No: 63

Interval: 4470.00 ft (KB) To 4490.00 ft (KB) (TVD)

Reference Elevations: 1902.00 ft (KB)

Total Depth: 4490.00 ft (KB) (TVD)

1892.00 ft (CF)

Hole Diameter: 7.88 inches Hole Condition: Fair

KB to GR/CF: 10.00 ft

Serial #: 8792 Outside

Press @ Run Depth: psig @ 4471.00 ft (KB)

Capacity: 8000.00 psig

Start Date: 2013.02.04

End Date: 2013.02.04

Last Calib.: 2013.02.04

Start Time: 07:47:24

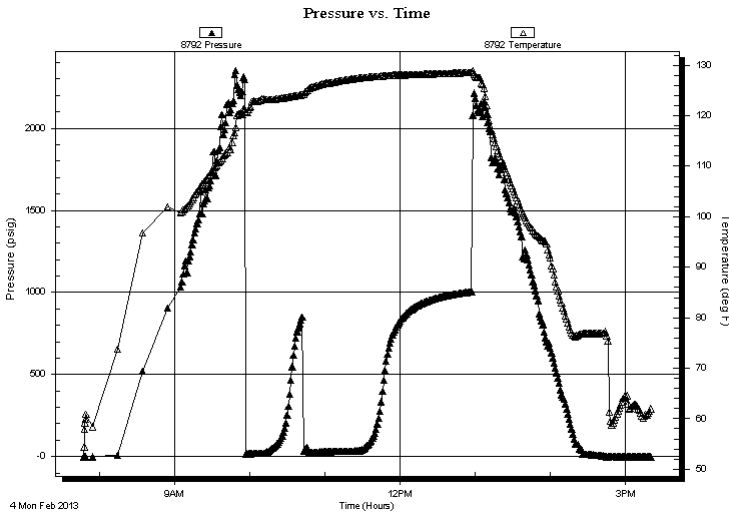
End Time: 15:19:48

Time On Btm:

Time Off Btm:

TEST COMMENT: IF: Fair blow . 1/4" - 6"
IS: No blow
FF: Fair blow . 1/4" - 6"
FS: NO blow

PRESSURE SUMMARY



Time (Min.)	Pressure (psig)	Temp (deg F)	Annotation

Recovery

Length (ft)	Description	Volume (bbl)
60.00	SLI OCWM 2%oil, 10%w tr, 88%mud	0.84
30.00	Drig mud 100%mud	0.42

Gas Rates

Choke (inches)	Pressure (psig)	Gas Rate (Mcf/d)

* Recovery from multiple tests



**TRILOBITE
TESTING, INC.**

DRILL STEM TEST REPORT

TOOL DIAGRAM

Oil Producers Inc. Of Kansas

28-28s-12w Pratt,KS

1710 Waterfront Pkwy.
Wichita, KS 67206-6603

Sealey A #1

Job Ticket: 50853

DST#: 4

ATTN: Mac Armstrong

Test Start: 2013.02.04 @ 07:51:33

Tool Information

Drill Pipe:	Length: 4449.00 ft	Diameter: 3.80 inches	Volume: 62.41 bbl	Tool Weight:	2400.00 lb
Heavy Wt. Pipe:	Length: 0.00 ft	Diameter: 0.00 inches	Volume: 0.00 bbl	Weight set on Packer:	25000.00 lb
Drill Collar:	Length: 0.00 ft	Diameter: 0.00 inches	Volume: 0.00 bbl	Weight to Pull Loose:	81000.00 lb
			<u>Total Volume: 62.41 bbl</u>	Tool Chased	0.00 ft
Drill Pipe Above KB:	7.00 ft			String Weight: Initial	64000.00 lb
Depth to Top Packer:	4470.00 ft			Final	65000.00 lb
Depth to Bottom Packer:	ft				
Interval between Packers:	20.00 ft				
Tool Length:	48.00 ft				
Number of Packers:	2	Diameter: 6.50 inches			

Tool Comments:

Tool Description

Tool Description	Length (ft)	Serial No.	Position	Depth (ft)	Accum. Lengths
Change Over Sub	1.00			4443.00	
Shut In Tool	5.00			4448.00	
Hydraulic tool	5.00			4453.00	
Jars	5.00			4458.00	
Safety Joint	3.00			4461.00	
Packer	5.00			4466.00	28.00 Bottom Of Top Packer
Packer	4.00			4470.00	
Stubb	1.00			4471.00	
Recorder	0.00	8790	Inside	4471.00	
Recorder	0.00	8792	Outside	4471.00	
Perforations	16.00			4487.00	
Bullnose	3.00			4490.00	20.00 Bottom Packers & Anchor

Total Tool Length: 48.00



**TRILOBITE
TESTING, INC.**

DRILL STEM TEST REPORT

FLUID SUMMARY

Oil Producers Inc. Of Kansas

28-28s-12w Pratt,KS

1710 Waterfront Pkw y.
Wichita, KS 67206-6603

Sealey A #1

Job Ticket: 50853

DST#: 4

ATTN: Mac Armstrong

Test Start: 2013.02.04 @ 07:51:33

Mud and Cushion Information

Mud Type: Gel Chem

Cushion Type:

Oil API:

deg API

Mud Weight: 9.00 lb/gal

Cushion Length:

ft

Water Salinity:

34000 ppm

Viscosity: 43.00 sec/qt

Cushion Volume:

bbbl

Water Loss: 9.99 in³

Gas Cushion Type:

Resistivity: ohm.m

Gas Cushion Pressure:

psig

Salinity: 8000.00 ppm

Filter Cake: 0.02 inches

Recovery Information

Recovery Table

Length ft	Description	Volume bbl
60.00	SLI OCWM 2%oil, 10%w tr, 88%mud	0.842
30.00	Drig mud 100%mud	0.421

Total Length: 90.00 ft

Total Volume: 1.263 bbl

Num Fluid Samples: 0

Num Gas Bombs: 0

Serial #: none

Laboratory Name:

Laboratory Location:

Recovery Comments:

Serial #: 8790

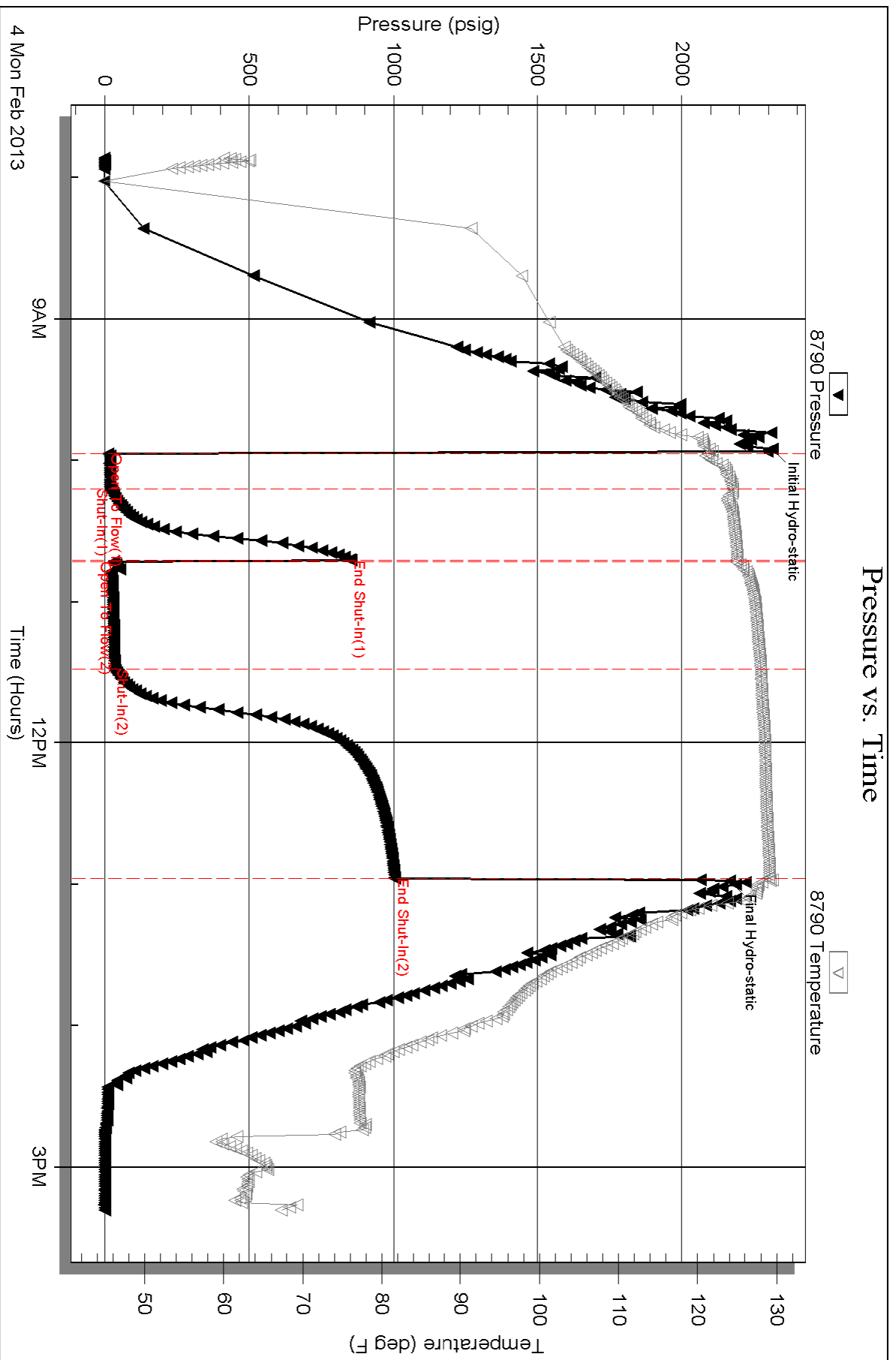
Inside

Oil Producers Inc. Of Kansas

Sealey A #1

DST Test Number: 4

Pressure vs. Time



Triobite Testing, Inc

Ref. No: 50853

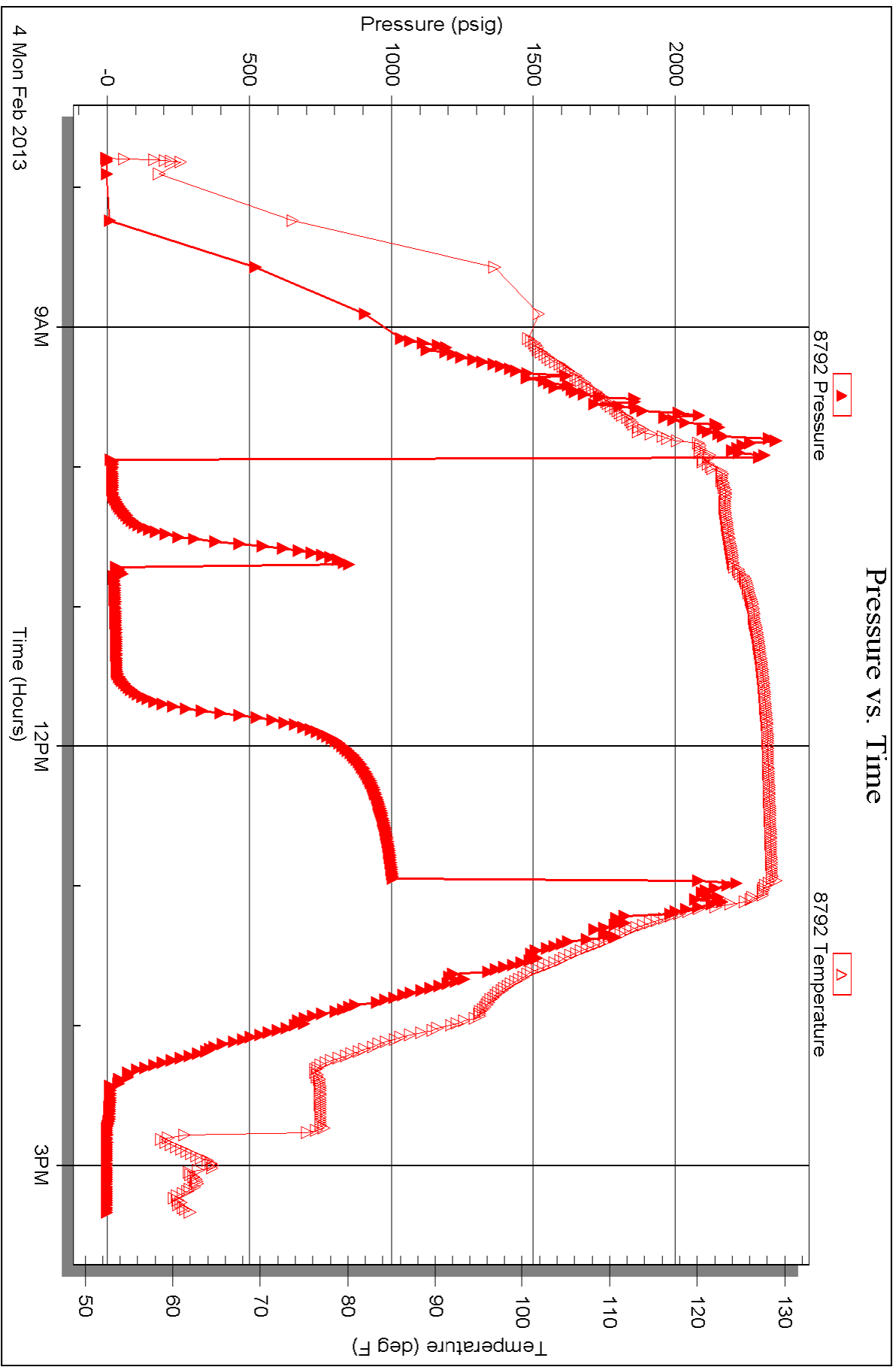
Printed: 2013.02.07 @ 08:30:23

Serial #: 8792

Outside Oil Producers Inc. Of Kansas

Sealey A #1

DST Test Number: 4





TRILOBITE TESTING INC.

P.O. Box 1733 • Hays, Kansas 67601

Test Ticket

NO. 49725

4/10

Well Name & No. ~~XXXXXXXXXX~~ Sealey "A" #1 Test No. 1 Date 1-31-13
 Company Oil Prod. Inc. of Kansas Elevation 1902 KB 1892 GL
 Address 1710 Waterfront Plwy Wichita, KS 67206-6603
 Co. Rep / Geo. Mac Armstrong Rig Maverick 106
 Location: Sec. 28 Twp. 28s. Rge. 12w. Co. Pratt State KS

Interval Tested 3880-3920 Zone Tested Lansing
 Anchor Length 40' Drill Pipe Run 3862 Mud Wt. 9.3
 Top Packer Depth 3875 Drill Collars Run ϕ Vis 62
 Bottom Packer Depth 3880 Wt. Pipe Run ϕ WL 8.8
 Total Depth 3920 Chlorides 3000 ppm System LCM 1#
 Blow Description IF: Good Blow, 1/2" - 9" ISI: No blow

FF: Good Blow, 1/4" - 11"
 FSI: No Blow

Rec	Feet of	%gas	%oil	%water	%mud
115	SLT OCMW	Tru	10	90	
80	SLT OCMW	Tru	85	15	

Rec Total 195 BHT 118 Gravity N/C API RW 0.2 @ 28° F Chlorides 95000 ppm
 (A) Initial Hydrostatic 1947 Test 1150 T-On Location 1845
 (B) First Initial Flow 26 Jars 250 T-Started 2027
 (C) First Final Flow 50 Safety Joint 75 T-Open 2245
 (D) Initial Shut-In 1334 Circ Sub T-Pulled 0143
 (E) Second Initial Flow 56 Hourly Standby T-Out 0422
 (F) Second Final Flow 107 Mileage 38.75 25 Comments
 (G) Final Shut-In 1346 Sampler
 (H) Final Hydrostatic 1896 Straddle Ruined Shale Packer
 Shale Packer Ruined Packer
 Extra Packer Extra Copies
 Initial Open 15 Extra Recorder Sub Total 0
 Initial Shut-In 30 Day Standby Total 1513.75
 Final Flow 45 Accessibility MP/DST Disc't
 Final Shut-In 90 Sub Total 1513.75

Approved By _____ Our Representative *Ryan Reynolds*

Trilobite Testing Inc. shall not be liable for damaged of any kind of the property or personnel of the one for whom a test is made, or for any loss suffered or sustained, directly or indirectly, through the use of its equipment, or its statements or opinion concerning the results of any test, tools lost or damaged in the hole shall be paid for at cost by the party for whom the test is made.



TRILOBITE TESTING INC.

1515 Commerce Parkway • Hays, Kansas 67601

Test Ticket

NO. 50851

4/10

Well Name & No. Sealey "A" #1 Test No. 2 Date 2-1-13
 Company Oil Prods. Inc. of Kansas Elevation 1902 KB 1892 GL
 Address 1710 Waterfront Pkwy Wichita, KS 67206-6603
 Co. Rep / Geo. Mac Armstrong Rig Maverick 106
 Location: Sec. 28 Twp. 28s. Rge. 12w. Co. Pratt State KS

Interval Tested 4048-4074 Zone Tested Lansing
 Anchor Length 26' Drill Pipe Run 4048 Mud Wt. 9.3
 Top Packer Depth 4043 Drill Collars Run Ø Vis 58
 Bottom Packer Depth 4048 Wt. Pipe Run Ø WL 8.0
 Total Depth 4074 Chlorides 3800 ppm System LCM 1#
 Blow Description IF: Strong blow. BOB 7min. No GTS ISI: No blow

FF: Strong blow. 1/4" - BOB @ 44 min. No GTS
FSI: No blow.

Rec	Feet of	%gas	%oil	%water	%mud
<u>335</u>	<u>GIP</u>	<u>100</u>			
<u>45</u>	<u>SLI OCWGM</u>	<u>19</u>	<u>1</u>	<u>5</u>	<u>75</u>
	<u>(Free oil in top of shut-in tool)</u>				

Rec Total 380 BHT 122 Gravity N/C API RW 16 @ 40 °F Chlorides 97000 ppm

(A) Initial Hydrostatic	<u>1989</u>	<input checked="" type="checkbox"/> Test	<u>1250</u>	T-On Location	<u>2015</u>
(B) First Initial Flow	<u>15</u>	<input checked="" type="checkbox"/> Jars	<u>250</u>	T-Started	<u>2127</u>
(C) First Final Flow	<u>21</u>	<input checked="" type="checkbox"/> Safety Joint	<u>75</u>	T-Open	<u>0013</u>
(D) Initial Shut-In	<u>690</u>	<input type="checkbox"/> Circ Sub		T-Pulled	<u>0355</u>
(E) Second Initial Flow	<u>22</u>	<input type="checkbox"/> Hourly Standby		T-Out	<u>0624</u>
(F) Second Final Flow	<u>34</u>	<input checked="" type="checkbox"/> Mileage	<u>25</u> 38.75	Comments	
(G) Final Shut-In	<u>795</u>	<input type="checkbox"/> Sampler			
(H) Final Hydrostatic	<u>1952</u>	<input type="checkbox"/> Straddle		<input type="checkbox"/> Ruined Shale Packer	
		<input type="checkbox"/> Shale Packer		<input type="checkbox"/> Ruined Packer	
Initial Open	<u>30</u>	<input type="checkbox"/> Extra Packer		<input type="checkbox"/> Extra Copies	
Initial Shut-In	<u>60</u>	<input type="checkbox"/> Extra Recorder		Sub Total	<u>0</u>
Final Flow	<u>45</u>	<input type="checkbox"/> Day Standby		Total	<u>1613.75</u>
Final Shut-In	<u>90</u>	<input type="checkbox"/> Accessibility		MP/DST Disc't	
		Sub Total	<u>1613.75</u>		

Approved By _____

Our Representative Ryan Reynolds

Trilobite Testing Inc. shall not be liable for damaged of any kind of the property or personnel of the one for whom a test is made, or for any loss suffered or sustained, directly or indirectly, through the use of its equipment, or its statements or opinion concerning the results of any test, tools lost or damaged in the hole shall be paid for at cost by the party for whom the test is made.



TRILOBITE TESTING INC.

1515 Commerce Parkway • Hays, Kansas 67601

Test Ticket

NO. 50852

4/10

Well Name & No. Sealey "A" #1 Test No. 3 Date 2-3-13
 Company Oil Prod. Inc. of Kansas Elevation 1902 KB 1892 GL
 Address 1710 Waterfront Pkwy. Wichita, KS 67206-6603
 Co. Rep / Geo. Mac Armstrong Rig Maverick 106
 Location: Sec. 28 Twp. 28s. Rge. 12w. Co. Pratt State KS

Interval Tested 4214-4252 Zone Tested Mississippi
 Anchor Length 38 Drill Pipe Run 4200 Mud Wt. 9.4
 Top Packer Depth 4209 Drill Collars Run Ø Vis 55
 Bottom Packer Depth 4214 Wt. Pipe Run Ø WL 8.0
 Total Depth 4252 Chlorides 5200 ppm System LCM 1#
 Blow Description IF: Good blow. 1/4" - 11" ISI: No blow

FF: Good blow. 6" - 11"

FSI: No blow

Rec	Feet of	%gas	%oil	%water	%mud
<u>210</u>	<u>GIP</u>	<u>100</u>			
<u>10</u>	<u>Dry mud</u>			<u>100</u>	

Rec Total 220 BHT 121 Gravity N/C API RW N/C @ N/C °F Chlorides 5200 ppm
 Test 1250 T-On Location 0615
 Jars 250 T-Started 0041
 Safety Joint 75 T-Open 0328
 Circ Sub T-Pulled 0627
 Hourly Standby T-Out 0848
 Mileage 25 38.75 Comments _____
 Sampler _____
 Straddle _____
 Shale Packer _____
 Extra Packer _____
 Extra Recorder _____
 Day Standby _____
 Accessibility _____
 Sub Total 1613.75 MP/DST Disc't _____

Initial Open 15
 Initial Shut-In 30
 Final Flow 45
 Final Shut-In 90

Approved By Mac Armstrong Our Representative Ryan Reynolds

Trilobite Testing Inc. shall not be liable for damaged of any kind of the property or personnel of the one for whom a test is made, or for any loss suffered or sustained, directly or indirectly, through the use of its equipment, or its statements or opinion concerning the results of any test, tools lost or damaged in the hole shall be paid for at cost by the party for whom the test is made.



TRILOBITE TESTING INC.

1515 Commerce Parkway • Hays, Kansas 67601

Test Ticket

NO. 50853

Well Name & No. Sealey "A" #1 Test No. 4 Date 2-4-13
 Company Oil Prod. Inc. of Kansas Elevation 1902 KB 1892 GL
 Address 1710 Waterfront Pkwy. Wichita, KS 67206-6603
 Co. Rep / Geo. Mac Armstrong Rig Maverick 106
 Location: Sec. 28 Twp. 28s. Rge. 12w. Co. Pratt State KS

Interval Tested 4470-4490 Zone Tested Simpson Sand
 Anchor Length 20 Drill Pipe Run 4449 Mud Wt. 9.4
 Top Packer Depth 4465 Drill Collars Run 0 Vis 43
 Bottom Packer Depth 4470 Wt. Pipe Run 0 WL 10.0
 Total Depth 4490 Chlorides 8000 ppm System LCM 1#
 Blow Description IF: Fair blow. 1/4" - 6" ISI: No blow

FF: Fair blow. 1/4" - 6"
FSI: No blow

Rec	Feet of	%gas	%oil	%water	%mud
<u>105</u>	<u>GIP</u>	<u>100</u>			
<u>30'</u>	<u>Dry mud</u>				<u>100</u>
<u>60</u>	<u>SLT SLWM</u>		<u>2</u>	<u>10</u>	<u>88</u>

Rec Total 195 BHT 129 Gravity N/C API RW 226 @ 65 °F Chlorides 34000 ppm

(A) Initial Hydrostatic <u>2313</u>	<input checked="" type="checkbox"/> Test 1250	T-On Location <u>0715</u>
(B) First Initial Flow <u>12</u>	<input checked="" type="checkbox"/> Jars 250	T-Started <u>0752</u>
(C) First Final Flow <u>20</u>	<input checked="" type="checkbox"/> Safety Joint 75	T-Open <u>0957</u>
(D) Initial Shut-In <u>853</u>	<input type="checkbox"/> Circ Sub	T-Pulled <u>1254</u>
(E) Second Initial Flow <u>30</u>	<input type="checkbox"/> Hourly Standby	T-Out <u>1518</u>
(F) Second Final Flow <u>34</u>	<input checked="" type="checkbox"/> Mileage <u>25</u> 38.75	Comments _____
(G) Final Shut-In <u>1004</u>	<input type="checkbox"/> Sampler	
(H) Final Hydrostatic <u>2167</u>	<input type="checkbox"/> Straddle	<input type="checkbox"/> Ruined Shale Packer
	<input type="checkbox"/> Shale Packer	<input type="checkbox"/> Ruined Packer
Initial Open <u>15</u>	<input type="checkbox"/> Extra Packer	<input type="checkbox"/> Extra Copies
Initial Shut-In <u>30</u>	<input type="checkbox"/> Extra Recorder	Sub Total <u>0</u>
Final Flow <u>45</u>	<input type="checkbox"/> Day Standby	Total <u>1613.75</u>
Final Shut-In <u>90</u>	<input type="checkbox"/> Accessibility	MP/DST Disc't _____
	Sub Total <u>1613.75</u>	

Approved By Matt Owen Our Representative Ryan Reynolds
 Trilobite Testing Inc. shall not be liable for damaged of any kind of the property or personnel of the one for whom a test is made, or for any loss suffered or sustained, directly or indirectly, through the use of its equipment, or its statements or opinion concerning the results of any test, tools lost or damaged in the hole shall be paid for at cost by the party for whom the test is made.