

H · E · S · S



O · I · L

C · O

Scale 1:240 Imperial

Well Name:	Sheila #1	
Surface Location:	S2/S2/S2/N2	
Bottom Location:	same	
API:	15-179-21329	
License Number:		
Spud Date:	4/29/2013	Time: 1:10 PM
Region:	Sheridan	
Drilling Completed:	5/8/2013	Time: 12:10 AM
Surface Coordinates:	2401 ft. FNL & 2672 ft. FWL	
Bottom Hole Coordinates:		
Ground Elevation:	2806.00ft	
K.B. Elevation:	2811.00ft	
Logged Interval:	3200.00ft	To: 4520.00ft
Total Depth:	4520.00ft	
Formation:	Lansing-Kansas City	
Drilling Fluid Type:	Chemical Mud	

OPERATOR

Company: Hess Oil Company
 Address: P.O. Box 1009
 McPherson, KS 67460

Contact Geologist: James C Hess
 Contact Phone Nbr:

Well Name:	Sheila #1	
Location:	S2/S2/S2/N2	API: 15-179-21329
Pool:	Sec 15 T9S R28W	Field: Wildcat
State:	Kansas	Country: U.S.A.

ELEVATIONS

K.B. Elevation:	2811.00ft	Ground Elevation:	2806.00ft
K.B. to Ground:	5.00ft		

SURFACE CO-ORDINATES

Well Type:	Vertical	
Longitude:	W100 25' 58.289"	Latitude: N39 16' 17.690"
N/S Co-ord:	2401 ft. FNL	
E/W Co-ord:	2672 ft. FWL	

TOTAL DEPTH

Measurement Type:	Measurement Depth:	TVD:
RTD	4520.00	0.00

LOGGED BY

Company:
Address: 225 N. Market, Suite 300
Wichita, KS 67202

Phone Nbr: (620) 953-2066
Logged By: Geologist

Name: Seth L. Evenson

NOTES

DST #1	DST #2	DST #3	DST #4
3872'-3965'	3972'-4020'	4020'-4170'	4411'-4451'
30-30-30-30	45-45-45-45	45-45-45-45	30-30-30-30
IHP=1868#	IHP=1931#	IHP=1993#	IHP=2198#
IFP=40#-335#	IFP=16#-28#	IFP=31#-292#	IFP=19#-20#
ISIP=1156#	ISIP=435#	ISIP=1177#	ISIP=30#
FFP=342#-526#	FFP=32#-43#	FFP=296#-468#	FFP=20#-21#
FSIP=1148#	FSIP=506#	FSIP=1175#	FSIP=26#
FHP=1844#	FHP=1903#	FHP=1983#	FHP=2172#
Rec: 190' WCM (40% W) 189' MCW (60% W) 189' MCW (80% W) 427' W w/SCM OIL IN TOOL	Rec: 60' M w/OIL SPTS IN TOOL	Rec: 429' MW (60% W) 616' W w/SSG	Rec: 15' M

ROCK TYPES

	Anhyprim		Lmst fw<7		Shgy		Chtcongl
	Coal		Mrlstcalc		Shcol		
	Congl		Mrlstdol		Slst		

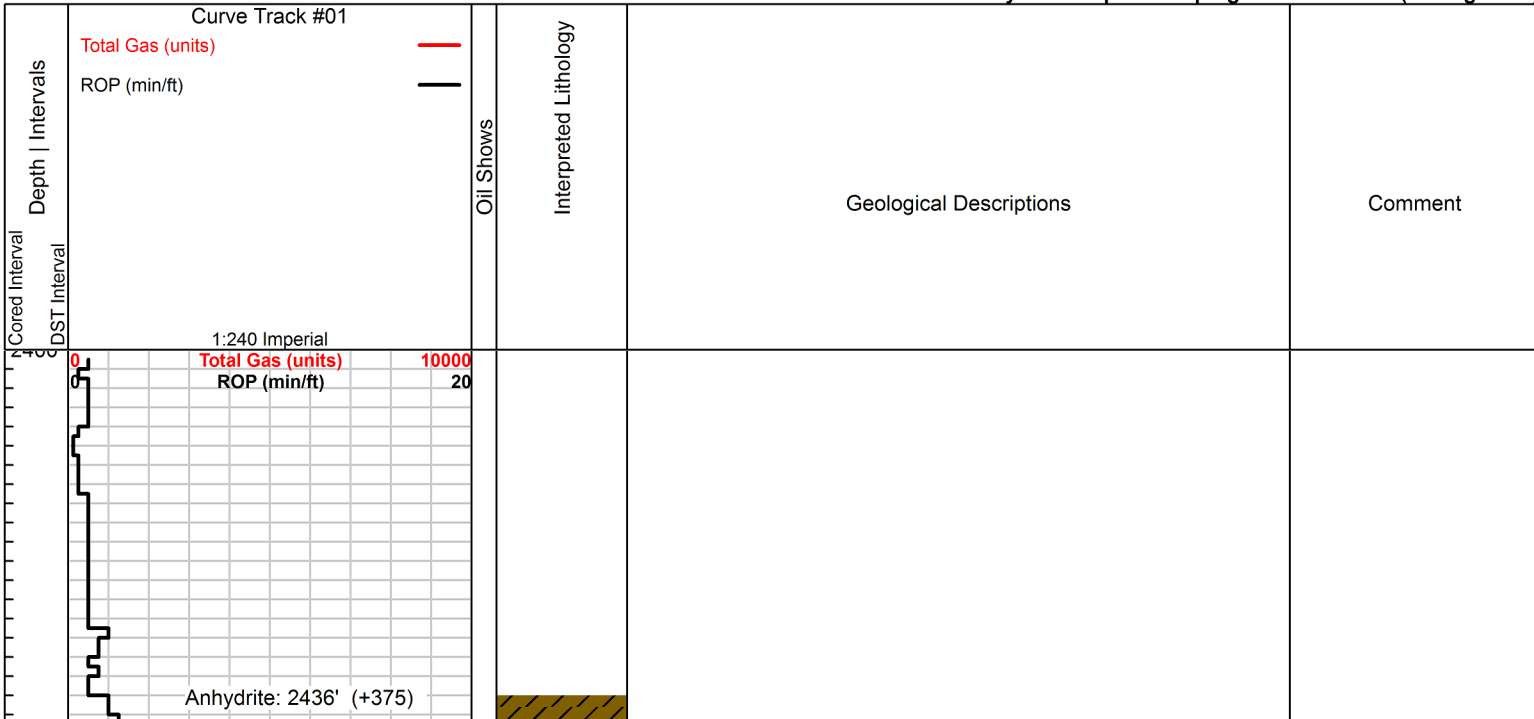
ACCESSORIES

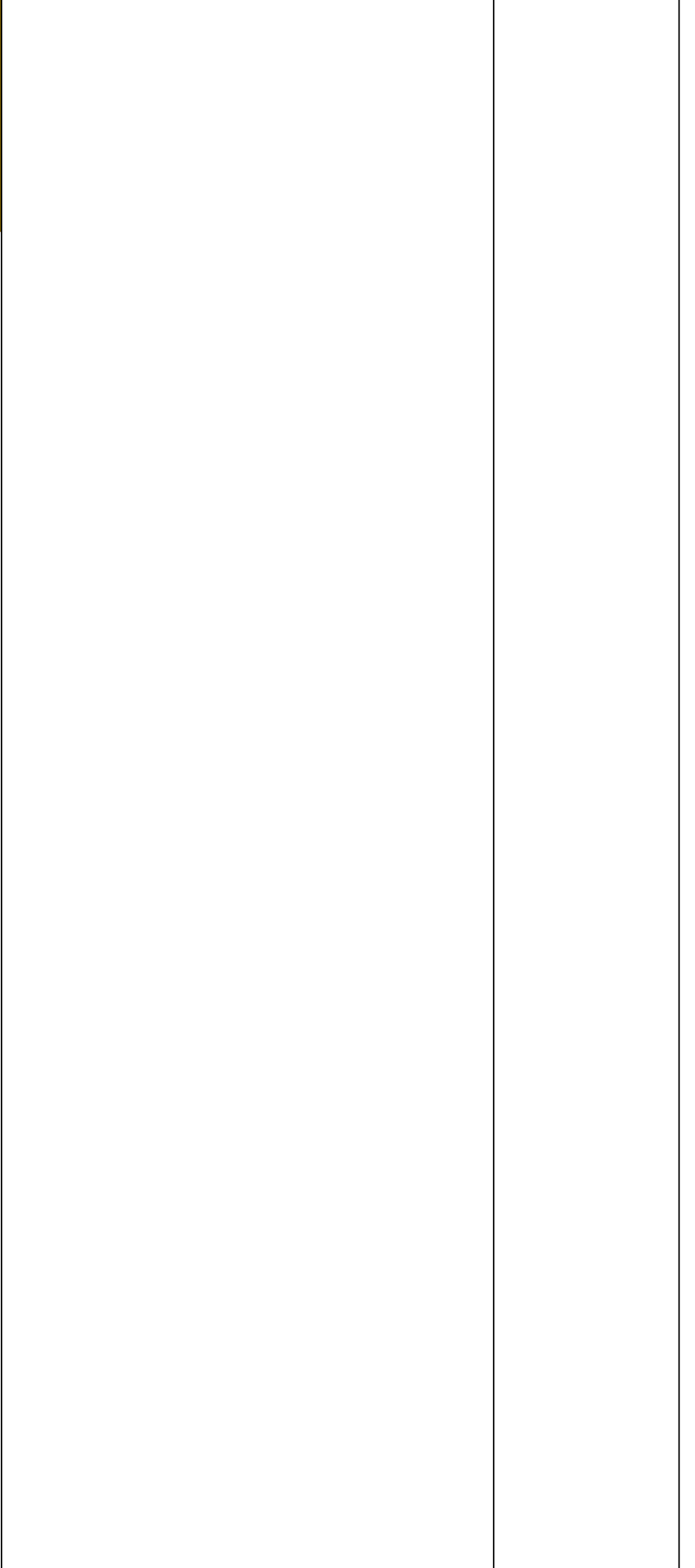
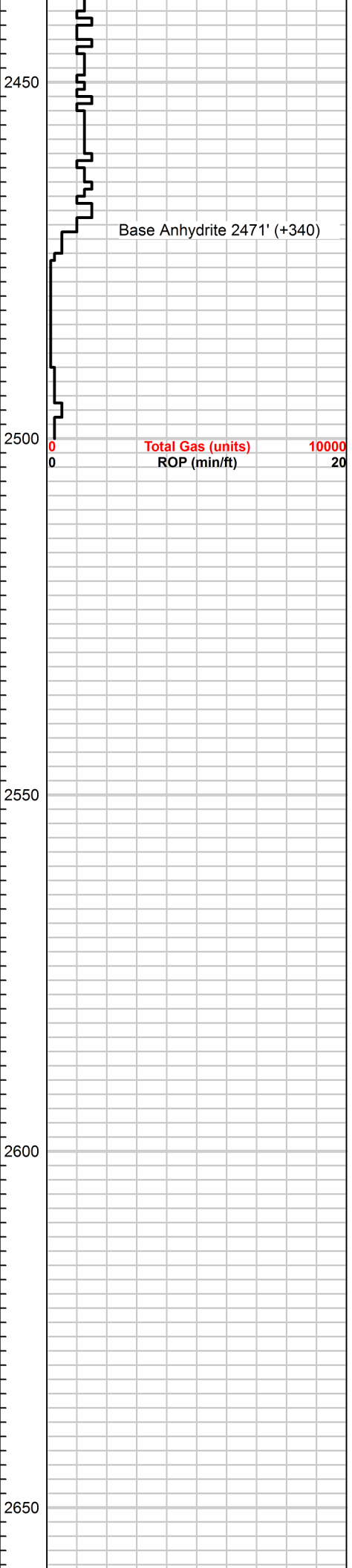
MINERAL	STRINGER
△ Chert White	Sandstone
	Shale

OTHER SYMBOLS

OIL SHOWS	INTERVALS
● Even Stn	■ Core
● Spotted Stn 50 - 75 %	· DST
● Spotted Stn 25 - 50 %	
○ Spotted Stn 1 - 25 %	
○ Questionable Stn	
D Dead Oil Stn	
■ Fluorescence	

Printed by GEOstrip VC Striplog version 4.0.7.0 (www.grsi.ca)





2700

2750

2800

2850

0	Total Gas (units)	10000
0	ROP (min/ft)	20

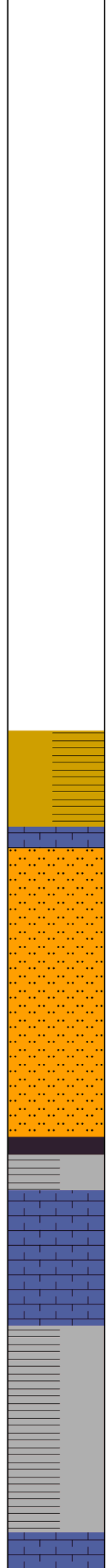
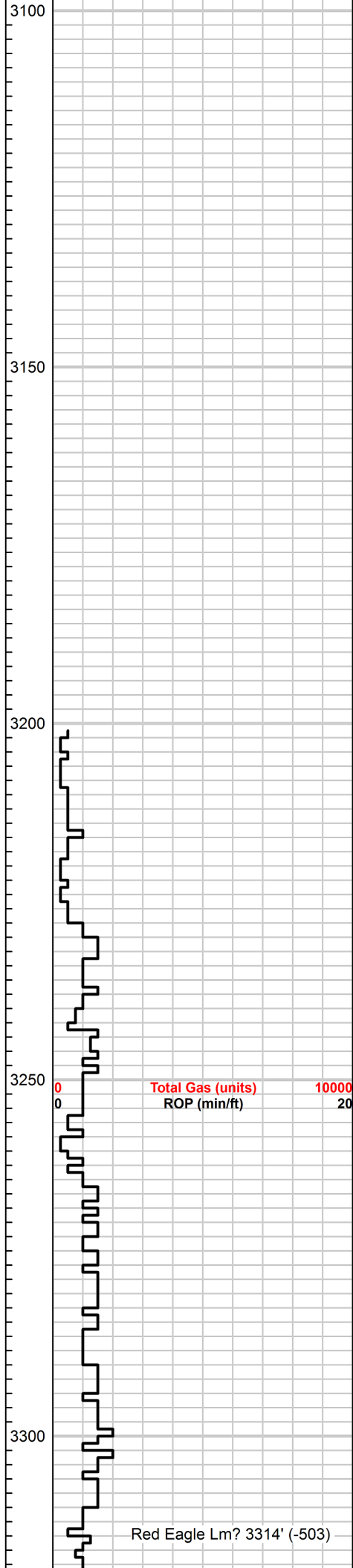
2900

2950

3000

3050

0	Total Gas (units)	10000
0	ROP (min/ft)	20



Vari-colored shale. Trc SS off wht, fn-med, sub rnd well srtd qtz grains, well cmntd, some speckled drk green glauconitic grains.

Trc lms, vfn xtln, tan highly silicified, vry hrd res, no vis allochems, no vis por. Mstly vari-colored shale & silty/sndy shale as abv.

Vry sndy shale/vry shaley SS. reddish-brwn to brwn-marroon, vfn grained, sft/brtl-friable, pr-no vis por. Trc tan med xtln lms no vis por & trc wht friable, sli glauc SS as abv.

Lms, tan, amber, lt gry, fn-med xtln, hrd res, highly silicified. Cln xtln matrix, pr-no vis por. Much shale as abv.

Lms as abv, some sli shaley, much brite, red platy-rnded smooth shale in sample.

Lms, fn-med xtln, silicified, tan, ambr to lt gry, med-hrd res, xtln, non-rhombic, no vis allochems, vry slw, wk effervescence, no vis por. Mstly vari-colored shales.

Begin 20 foot samples

Red Eagle Lm? 3314' (-503)

shale, pr-no vis por. Also much gry shale.

3550

Shaley lms, lt gry, often w/yell-grn/yellow brwn stn, vfn-fn xtln, med-hrd res, abndtly fossiliferous, no vis por. Also some oolitic.

Heward 3580' (-796)

Shaley lms & lmy shale crm-gry, vfn-fn xtln, few are fossiliferous, all no vis por. med-hrd res.

3600

Lmy shale & shaley lms gry, med-hrd res, vfn xtln, no vis por. Increase in gry shale, also trc of gry vfn grained, shaley SS/sndy shale. All no vis por.

Lms, crm, micro-vfn xtln, brtl to med res, sli chlky, no vis por. Only trc of fossils. Much gry shale & gry lmy shale as abv. Trc black carbonaceous shale.

3650

Lms crm-lt gry, vfn-fn xtln, med res, few to no allochems, trc-pr pinpoint, intr xtln por. Mstly pr matrix por.

Lms crm, vfn-fn xtln, sli chlky, med res, pr-no vis por. A few brtl pcs, still pr vis por. Some pcs sli fossiliferous.

Topeka 3677' (-866)

Lms crm, micro-vry fn xtln, often chlky, few to no allochems, brtl-med res, pr-no vis por.

3700

Lms, crm-lt gry, micro-vfn xtln, brtl-med res, no allochems no vis por. Some off-wht, sft, chlk, no vis por.

3700'-10': Lms, gry, vfn-fn xtln, med-hrd res, no vis por. A few pcs sli foss.

3710'-20': Lms, lt gry-gry, vfn-fn xtln, med-hrd res, no vis por, some sli shaley. A few large pcs platy shale.

Deer Creek Lm 3730' (-919)

3720'-30' Lms, crm-lt gry, vfn-fn xtln, med-hrd res, pr-no vis por, few to no allochems.

3730'-40': Lms, crm-lt gry similar to abv, sli more fossiliferous, med-hrd res, no vis por.

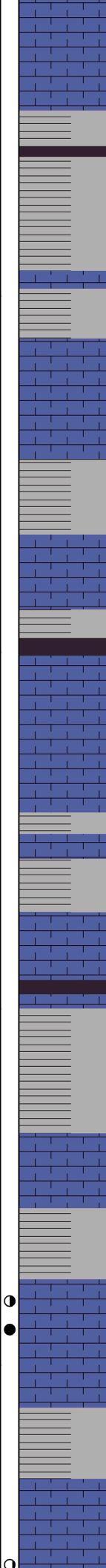
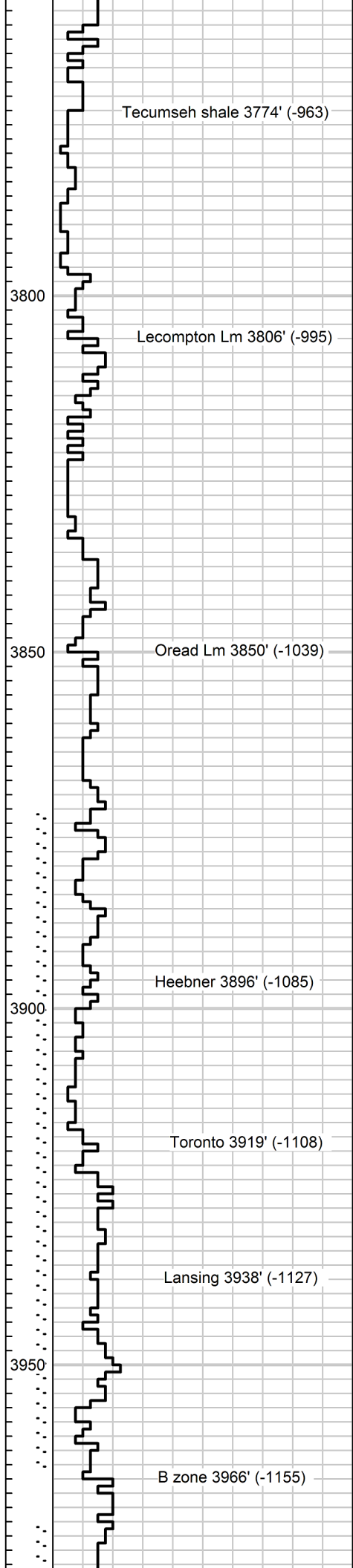
3740'-50': Lms, crm-tan, vfn-fn xtln, med-hrd res, trc sli yellowish, gry, med xtln, lms, all no vis por. Trc fossiliferous pcs.

3750

Total Gas (units) 10000
ROP (min/ft) 20

3750'-60': Even mix lms, crm-lt gry, vfn xtln, pr-no vis por, hrd res & much shale, drk gry, re-brwn, brt red, prpl, some shaley lt prpl lms, trc brt red semi-translucent chert. shrp & frsh.

Switch to 10 foot samples @ 3700'.



3760'-70': Sndy, lmy shale, gry, med-hrd res, abndt, vfn grains, tite, gry, clay matrix. Grades into shale, sndy, lms. No vis por.

3770'-80': Lms, tan-lt brwn, fn-med xtln, hrd tite & chlky, off wht, sft, no vis por. much gry shale, brt red etc. Some sft & mshy.

3780'-90': Lms, crm, vfn-fn xtln, med-hrd res, pr-no vis por. Some sli silicified.

3790'-3800': No sample

3800'-10': Lms, crm-tan, fn xtln, hrd res, no allochems, no vis por.

3810'-20': Lms, crm-tan, vfn-fn xtln, sft-hrd res, some sli chlky sft, non-allochemical, no vis por.

3820'-30': Lms, gry, fn-med xtln, sft-med res, often shaley, no vis por. Much blk carb shale, blk & brtl.

3830'-40': Lms, crm-tan, micro-vfn xtln, some sli chlky, also much lms, gry, fn-med xtln, shaley, sli foss, tan, micro xtln foss lms. Some SS, gry, vfn grained, shaley, brtl-semi fri, all pr-no vis por.

3840'-50': Lms, tan, fn-med xtln, all xtln matrix. Hrd, pr-no vis por, no allochems, to sli chlky, pr-no vis por, trc allochems.

3850'-60': Lms, crm, vfn-fn xtln, mst tite xtln matrix, much oolitic w/off-wht mud matrix, no vis por. Med-hrd res.

3860'-70': Lms, crm, vfn-fn xtln, hrd res, some chlky, sli foss, trc ool lms Also, shale, gry, red, marroon. Trc blk carb, blk, shale. Mstly, crm fn xtln lms as abv.

3870'-80': Lms, lt ry, micro-vfn xtln, med-hrd res, sli chlky/shaley, no vis por. mstly crm, vfn xtln, tite lms as abv.

3880'-90': Lms crm, some gry, sli foss, all vfn-fn xtln, med-hrd res, pr-no vis por, trc crm sli oolitic lms.

3890'-3900': Lms crm-lt gry vfn-fn xtln, med-hrd res, pr-no vis por. some wht to off-wht, sft-med res, chlky, trc vari-colored shales.

3900'-10': Lms, lt gry, micro-vfn xtln, hrd res, pr-no vis por. Much crm lms as abv. trc blk & vari-colored shales.

3910'-20': Lms, crm-lt gry, fn xtln, med-hrd res, pr-no vis por, some gry, lmy shale & shaley lms.

3920'-30': Lms, lt gry, fn xtln, sli shaley, med res, pr-no vis por. also some blk, sli carb shale, somewhat blocky.

3930'-40': Mstly trsh, vari-colored shales & gry-crm tite lms. Trc of lt gry, fn-med xtln ool lms, hrd, no vis por, drk gry lrg ooids.

3940'-50': Lms, off-wht-tan, vfn xtln, some sli chlky. Fr scat dead stn, in pnpnt intr xtln por. Trc lv blk stn & trc blk FO. 1 pc. Fr scat dull yell fluor, in pnpnt vugs. Non oomoldic. Gd fst strming cut, fr-gd bloom. fr-well sat, brtl-med res, pr overall por. No odor.

3950'-60': Lms, off-wht to crm, vfn xtln, brtl-med res, pr-no matrix por. Only a few pcs w/scat spty, pnpnt blk stn as abv. Trc blk lv stn & trc blk to drk brwn FO. fr-gd strming cut & bloom as abv. Mst pcs no show. No odor.

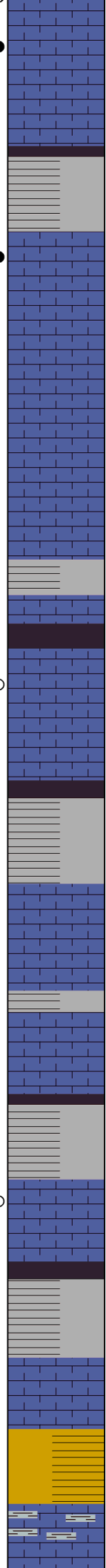
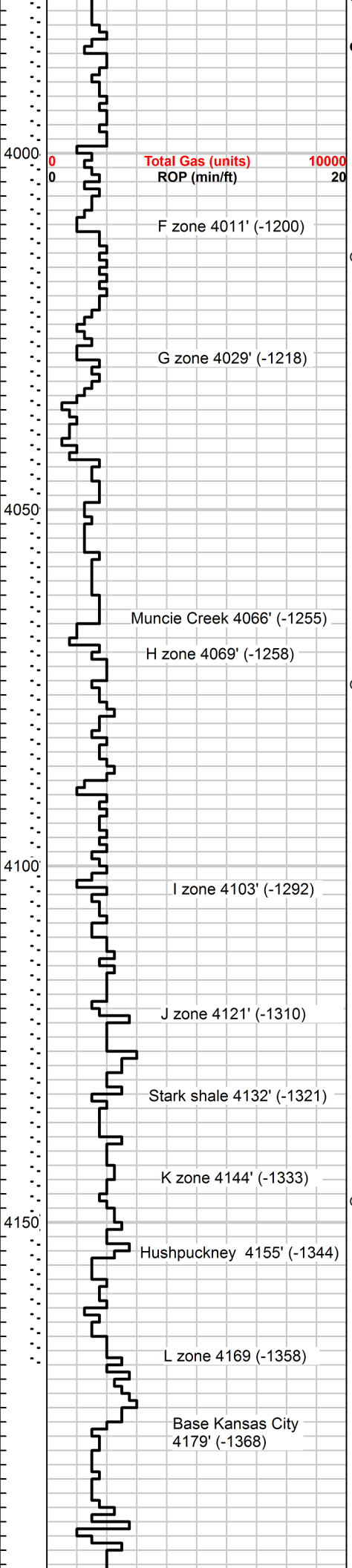
3960'-70': Shale, gry, brt red, marroon, lt grn. Also lms, lt gry, fn xtln, tite, only trc stn in pcs from abv. Trc lt gry abndtly ool lms, no vis por.

3970'-80': Lms, crm, vfn xtln, med-hrd res, no vis allochems, no vis porosity. Much vari-colored shale.

CFS @ 3930' 20 min: Shale, blk, sli carb, blk, sft-crsp. Mstly lms, gry-gry brwn, fn xtln, hrd tite. Trc brt red & gry blk shale.

CFS @ 3930' 40 min: Lms gry brwn-brwn, fn xtln, hrd res, sli foss, no vis por. Trc highly ool lms, no vis por. Trc pyrite, some shale as abv.

CFS @ 3965' 20 min: Much off-wht, sft, chlky & lms crm-lt gry, abndt rnd ooids, mst pr-no vis por, brtl-med res. A few pcs gry, non-ool lms w/lv stn in deep scat vugs. Trc FO on brk. gd fst strming cut & bloom, vry fnt dull



CFS @ 3985'

3980'-90': Vari-colored shales, gry, red, purple, maroon.

3990'-4000': Lms crm-lt gry, vfn-fn xtnl, some oolitic, some sli chlky w/trc ooids. fr-gd scat blk stn & pr-fr uneven sat FSFO in a few pcs upon brk. Sli odor. Shw in scat pnpnt intr xtnl vugs, fr-gd yell-wht uneven fluor, gd fst strming cut & bloom.

4000'-10': Lms gry, vfn-fn xtnl, brtl-med res, fr-gd intr xtnl por, fr-gd blk lv stn & sat in intr xtnl por. SSFO, fr odor, fr-gd uneven, yell-grn fluor, gd fst strming cut & bloom. Sample contains abndt lms crm-tan, vfn xtnl, tite, no show & abndt chrt, off-wht, shrp & frsh. Pcs w/shw poss btr sat than abv.

4010'-20': Lms, crm-lt gry, vfn-fn xtnl, brtl-med res, gd spty lv stn, gd even sat, GSFO on brk. Fr even, dull fluor, gd thick, fst strming to boiling cut, exclnt bloom. Gd-vry gd sat in about 30-40% pcs gd show, fr odor.

4020'-30': Lms, crm-lt gry, micro-vfn xtnl, mstly no vis por. Trc sli chlky, off wht to gry lms w/scat blk stn, trc FO, much vari-colored shale & some micro xtnl, 2ndry calcitic lms.

4030'-40': Lms, crm-some lt gry, vfn xtnl, also off-wht, med xtnl, mst no vis por. A few pcs off-wht, chlky, w/vry sprse, pr edge stn, trc cut in a few pcs. May be from uphole?

4040'-50': Lms, crm-tan, crs xtnl, calcitic, entirely crs intr grwn calcite xtls. Med-hrd res, pr vis, intr xtnl por. Sprse, scat dead asphaltic stn in a few pcs, vry wk trc spty fluor, wk-fr cut in a few pcs. SSFO in a couple small, vfn xtnl, lms pcs w/pr vis por.

4050'-60': Lms, tan-lt brwn, vfn-fn xtnl, some tan-crm, abndtly ool, pr vis por. Mst non-allochemical, foss, hrd no vis por. 1 pc vfn xtnl, tan lms w/sli edge stn, fr even fluor, gd strming cut, gd bloom. A few pcs w/scat stn, no intr xtnl por & trc cut. No odor. Lms off-wht, tite SSFO on sqz, from 1 or 2 pnpnt vugs, no intr xtnl por. Vry pr shw overall.

4060'-70': Lms mix, off-wht, chlky, crm vfn xtnl, some abndtly ool, w/shallow oomldic vugs. Pr overall por, no shw, some lt brwn, fn xtnl, tite, dnse. Sample has pr por in mst all pcs. Trc lv blk stn in a few pcs.

4070'-80': Lms, crm, micro-fn xtnl, med-hrd res, few to no allochems, pr-no vis por. Some pcs sli chlky, some chrt, shrp & frsh, off-wht to crm. A few pcs lms w/trc blk stn.

4080'-90': Lms crm-tan vfn-fn xtnl, hrd res, pr-no vis por. Some sli chlky, all non-allochemical. A couple pcs w/trc lv stn in vry pr intr xtnl por.

4090'-4100': Lms, crm-lt gry, vfn-med xtnl, hrd res, few to no allochems, pr-no vis por. Some sli chlky, also chrt, lt gry, shrp & frsh, fossiliferous.

4100'-10': Lms lt gry, micro xtnl, hrd res, non-allochemical, no vis por. Chrt, wht, shrp & frsh.

4110'-20': Lms, gry, fn xtnl, med-res, non-allochemical, tite, pr-no vis por, trc sli ool & foss pcs, pr-no vis por.

4120'-30': Vari-colored shale, gry, lt grn, blu-grn, prpl, blk & brwn red shale. Also gry shaley lms, also some ool, tite tan, vfn xtnl lms, no vis por.

4130'-40': Vari-colored shale, increase from abv. Shaley lms, some tan, vfn-micro xtnl lms, oolitic, no vis porosity. Hrd res.

4140'-50': Lms, crm-lt gry, sli grn tint, mst micro-vfn xtnl, med-hrd res, some sli foss, no vis por. Much vari-colored shale as abv.

4150'-60': 1 pc lt gry spicular chert w/gd blk lv stn & trc FO on brk, a few other trc pcs tite lms w/wk shw stn. Much vari-colored shale. Hole slough or Stark?

4160'-70': Lms, lt gry-gry, fn-med xtnl, mud-chlky matrix, ool, non-oomldic, non vuggular. Med res, pr-no vis por. rough bmpy text, ratty looking. Also vari-colored shale.

4170'-80': Vari-colored, shale, red, gry-grn, magenta, maroon, drk gry, blk. Trc, lt grn, vfn grained, sndy shale. A few pcs, colored shaley lms, hrd res, no vis por.

4180'-90': Vari-colored shale, gry, drk grn, maroon, red, prpl, drk gry. some hrd, shaley colored lms, no vis por.

4190'-4200': Lms, lt gry-gry, fn xtnl, shaley, mottled w/strk maroon shale. Much lms, lt gry-tan. Micro-med xtnl, trc foss, trc chrt inclns. Hrd res, no vis por. 1 pc lms gry, w/abndnt small rnd ooids, fr blk dead stn, non-vuggular, pr-no vis por, hrd res, fnt trc cut, no bloom.

fluor. no odor.
CFS @ 3965' 40 min: Lms, crm, ool, brtl-med res, mst pr-no vis por. A couple pcs w/vry sprs oomldc vugs, FSFO on brk, pr-fr vfnv pr
CFS @ 3965' 60 min: Lms, crm, micro-vfn xtnl, abndtly ool, no vis por. Possible trc dead stn, hrd res. Much vari-colored shale. I nst shw
CFS @ 3985' 20 min: Lms, crm, micro-vfn xtnl, hrd tite, no vis por. A few small chips chlky lms w/vry pr scat stn, no cut. Drplts brwn FO floating in tray.

CFS @ 3985' 40 min: Lms, off-wht-crm, micro-vfn xtnl, hrd res, trc ool pcs, pr-no vis por. Vry rare, spty, dead surfc stn in a few pcs. 1 pc w/wk-fr dying cut, vry wk bloom
CFS @ 3985' 60 min: Increase in vari-colored shale, much tite, crm, lms as abv, vry wk shw.

CFS @ 4020' 20 min: Lms, crm-lt gry, vfn-fn xtnl, mstly tite, no vis por. About 15-20% pcs, lt gry-tan, 2ndry calc xtls, fr-gd vuggular pr, fr-gd even stn & sat, FSFO, blk FO on brk, some sli gassy. Thick boiling cut, exclnt blm, vry well sat. Sli odr.
CFS @ 4020' 60 min: Lms, mstly crm, vfn xtnl, hrd tite, pr-no vis por, some pcs spty uneven drk brwn stn, a few w/trc FO on brk. Only 5% pcs are 2ndry xtnl lms w/lrg deep vugs as abv. These pcs have SSFO, some vry hrd, bleed gsy FO on sqz. Mst gd, brt uneven yell fluor. Gd thick, fst strming cut, gd bloom. Fr odor. Losing show.

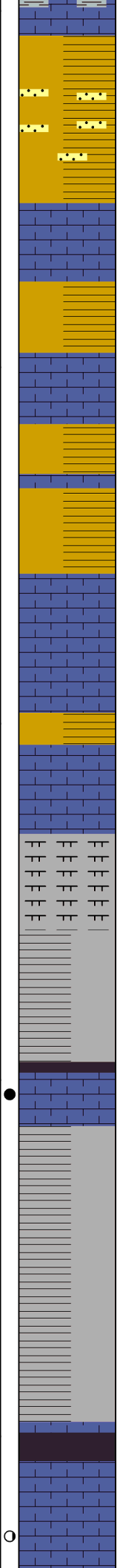
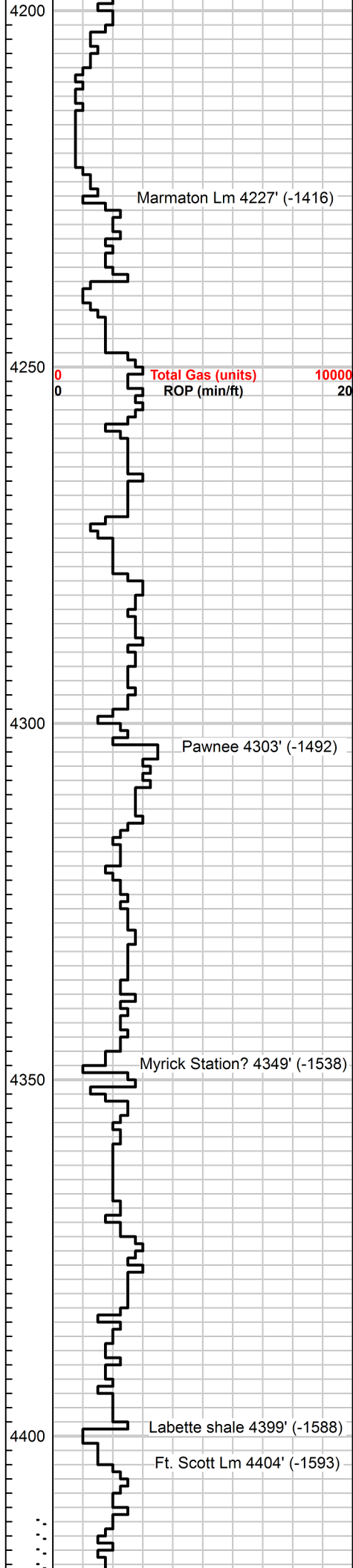
CFS @ 4071'

CFS @ 4120' 20 min: Lms gry, micro-fn xtnl, no vis por. Some sli foss, hrd res, semi-smooth text, many w/sli yell-gry tint.

Kelly swivel broke down @ 4155'

CFS @ 4170' 20 min: Lms, lt gry-gry, micro-vfn xtnl, hrd res, non-allochemical, no vis por. Mstly frly smooth text, some vari-colored shale, trc blk carb shale.

CFS @ 4170' 40 min: Lms, mstly gry, micro-fn xtnl, med-hrd res, tite, no vis por. Trc sli foss pcs. a few pcs w/yell tint, fn xtnl, rough text, no vis por. Increase in vari-colored shale, trc blk shale.



4200'-10': Shale, gry, red-brwn, marroon, drk gry, trc brt blu-grn. A few pcs brwn-yellowish tint, to drk brwn, vfn xtln tite lms, hrd res, oolitic-fossiliferous like pcs, w/stn from abv. No show.

4210'-20': Vari-colored shale like abv, red-brwn, gry, gry-grn. Some lms, lt gry, micro-vfn xtln. Non-allochemical, hrd res, no visible porosity.

4220'-30': Shale as abv, and some sndy shale/shaley SS, gry-lt yell-gry, off-wht, vry shaley/chlky matrix, no vis porosity.

4230'-40': Shale gry, prpl, red-brwn, grn, magenta. Also lms, tan-lt gry, micro-vfn xtln, hrd res, no vis porosity.

4240'-50': Shale, gry, marroon, grn, some black, trc hrd tite lms as abv, no vis porosity.

4250'-60': Lms, lt gry-tan, vfn-med xtln, brtl-med res, many oolitic, trc vfn grained, sndy lms, some pcs chlky, brtl. All pr-no vis por.

4260'-70': Shale, red-brwn, gry & drk grn-gry. Also lms, tan-lt gry, fn xtln, hrd res, non-allochemical, no vis porosity.

4270'-80': Lms lt brwn - gry, micro xtln, hrd res, no vis allochems, no vis por. much shale in sample.

4280' 90': Lms gry, fn xtln, hrd res, sli foss, gritty text, no vis por. some shaley sft lms-lmy shale.

4290'-4300': Shale marroon, gry, grn, purple, some lt gry tite vry shaley, vry fn grained SS clstrs. No vis por.

4300'-10': Lms off wht - gry, micro-vry fn xtln, tite, mstly hrd w/abndt vry small ooids, some gry chrt inclusions, a few pcs chlky matrix brit-med res, all no vis por.

4310'-20': Lms gry-tan micro-fn xtln, vry hrd res, abndtly oolitic as abv, no vis por. Increase in shales, red-brwn, gry, grn, prpl.

4320'-30': Lms gry micro-vry fn xtln, hrd res, non-allochemical, no vis por. some off wht, chlky, some gry shaley lms.

4330'-40': Lms gry vry fn-fn xtln, hrd res, non-allochemical, some sli shaley, no vis por.

4340'-50': Lms gry as abv, & shale gry to lt gry platy, w/some shaley lms. No vis por.

4350'-60': Shale gry, red-brwn earthy, prpl, some blk carb sli brtl. Much lms gry micro-vry fn xtln, hrd tite, no vis por. 1 small pc tan lms, fn xtln, w/ pr spty stn, wk-fr strming cut, fr bloom.

4360'-70': Shale gry-lt gry some lmy firm, trc wht sft chl. Some lms gry-tan-lt brwn fn-med xtln, no vis por. A few small pcs lms off wht-tan vry fn xtln, pr vis por w/pr uneven stn, fr sat trc FO in

4370'-80': 1 pc lms gry, med xtln, brtl-med res, pr inter xtln por, pr spty blk stn on surface, vry wk to no fluor, SSFO blk droplets FO from med size interxtln vugs upon brk. No odr in cup.

4380'-90': Mstly lms gry vry fn xtln tite, trc few small pcs lms off-wht to lt gry, vry fn-fn xtln, brtl, fr inter xtln por, w fr scat drk brk to blk lv stn, fr-gd brt yell-wht fluor, fr fst strming cut, fr bloom, trc FO on brk. No odor.

4390'-4400': Shale, blk, marroon, prpl, grn etc. A few pcs, lms tan micro-med xtln hrd res, some lt gry shaley, no vis por. trc SS clstrs lt gry vry fn grained, vry shaley, sft, semi-friable, pr-no intr granular por.

4400'-4410': Shale, blk, vry sli-non carbonaceous.

4410'-20': Lms gry, micro-fn xtln, mstly hrd res, no vis por. vry sli ool. sli foss. trc gast & spic foss. some sli chlky med res

inter xtln pinpnt por, gd yell grn even fluor, fr-vry gd cut brk only, fr-exclnt bloom

2-3 pcs vry fn xtln gry lms w/trc lv stn, wk-fr strming cut, fr-gd cut on brk

A few clstrs lt gry SS, vry fn grained sft shaley, no vis por.

CFS @ 4390' 20min: Shale blk, sft-brtl blk, sli carb. 1 pc lms w/lv stn

4390' 40min: Shale gry, blk, marroon, etc

4390' 60 min: Shale, blk, gry, red, prpl, grn.

CFS @4420' 20min: Lms, gry, tan, vry fn xtln, hrd res, sli foss, some gast foss. no vis por. off wht sli chlky med

