



**TRILOBITE TESTING, INC.**

# DRILL STEM TEST REPORT

Deutscher Oil Operations

**27-12s-20w Ellis KS**

130 Ave  
Ellis KS, 67637

**Armbrister 1-27**

ATTN: Richard Bell

Job Ticket: 53625

**DST#: 2**

Test Start: 2013.05.19 @ 17:04:00

## GENERAL INFORMATION:

Formation: **LKC " D "**

Deviated: No Whipstock: 2215.00 ft (KB)

Time Tool Opened: 18:37:20

Time Test Ended: 23:18:00

Test Type: Conventional Bottom Hole (Reset)

Tester: Jim Svaty

Unit No: 41

**Interval: 3583.00 ft (KB) To 3602.00 ft (KB) (TVD)**

Reference Elevations: 2215.00 ft (KB)

Total Depth: 3602.00 ft (KB) (TVD)

2210.00 ft (CF)

Hole Diameter: 7.88 inches Hole Condition: Fair

KB to GR/CF: 5.00 ft

**Serial #: 8734**

**Inside**

Press @ RunDepth: 168.36 psig @ 3584.00 ft (KB)

Capacity: 8000.00 psig

Start Date: 2013.05.19

End Date: 2013.05.19

Last Calib.: 2013.05.19

Start Time: 17:04:01

End Time: 23:17:30

Time On Btm: 2013.05.19 @ 18:37:10

Time Off Btm: 2013.05.19 @ 21:37:30

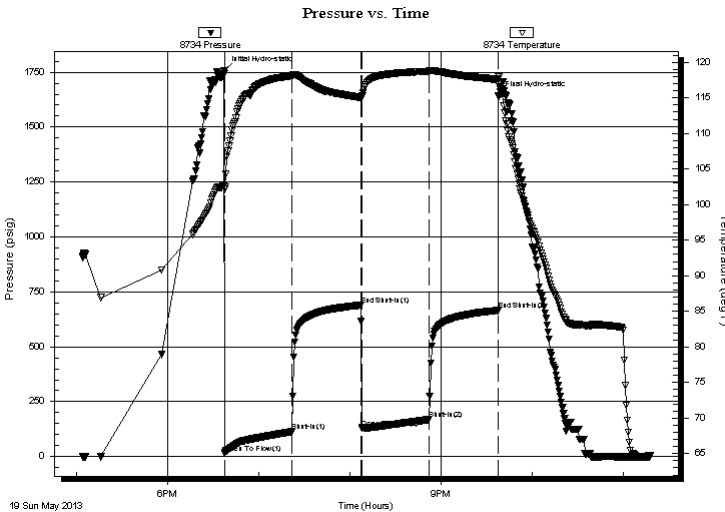
**TEST COMMENT:** 45-IFP- Surface Blow in 2 min. Surging Building to BOB in 35 min.

45-ISIP- No Blow

45-FFP- Surface Blow in 3 min. Surging Building to 8 in.

45-FSIP- No Blow

## PRESSURE SUMMARY



| Time (Min.) | Pressure (psig) | Temp (deg F) | Annotation           |
|-------------|-----------------|--------------|----------------------|
| 0           | 1757.93         | 102.85       | Initial Hydro-static |
| 1           | 14.95           | 102.14       | Open To Flow (1)     |
| 45          | 113.59          | 118.12       | Shut-In(1)           |
| 90          | 689.38          | 115.05       | End Shut-In(1)       |
| 91          | 129.90          | 115.37       | Open To Flow (2)     |
| 135         | 168.36          | 118.75       | Shut-In(2)           |
| 181         | 665.28          | 117.61       | End Shut-In(2)       |
| 181         | 1643.97         | 118.08       | Final Hydro-static   |

## Recovery

| Length (ft) | Description              | Volume (bbl) |
|-------------|--------------------------|--------------|
| 317.00      | MCW 5%w 95%w Show of Oil | 3.32         |
|             |                          |              |
|             |                          |              |
|             |                          |              |

\* Recovery from multiple tests

## Gas Rates

| Choke (inches) | Pressure (psig) | Gas Rate (Mcf/d) |
|----------------|-----------------|------------------|
|                |                 |                  |



**TRILOBITE  
TESTING, INC.**

# DRILL STEM TEST REPORT

**FLUID SUMMARY**

Deutscher Oil Operations

**27-12s-20w Ellis KS**

130 Ave  
Ellis KS, 67637

**Armbrister 1-27**

Job Ticket: 53625

**DST#: 2**

ATTN: Richard Bell

Test Start: 2013.05.19 @ 17:04:00

## Mud and Cushion Information

Mud Type: Gel Chem

Cushion Type:

Oil API:

deg API

Mud Weight: 9.00 lb/gal

Cushion Length:

ft

Water Salinity:

45000 ppm

Viscosity: 51.00 sec/qt

Cushion Volume:

bbbl

Water Loss: 7.97 in<sup>3</sup>

Gas Cushion Type:

Resistivity: ohm.m

Gas Cushion Pressure:

psig

Salinity: 3100.00 ppm

Filter Cake: inches

## Recovery Information

Recovery Table

| Length<br>ft | Description                                      | Volume<br>bbbl |
|--------------|--|----------------|
| 317.00       | MCW 5% <sub>m</sub> 95% <sub>w</sub> Show of Oil | 3.317          |

Total Length: 317.00 ft      Total Volume: 3.317 bbl

Num Fluid Samples: 0

Num Gas Bombs: 0

Serial #:

Laboratory Name:

Laboratory Location:

Recovery Comments: .191 @ 61

