



**TRILOBITE TESTING, INC.**

# DRILL STEM TEST REPORT

Forestar Petroleum Corporation  
 1801 Broadway STE 900  
 Denver, CO 80202  
 ATTN: Bruce Ard / Justin H

**20/1s/31w Rawlins KS**  
**Pamela Anderson#1-20**  
 Job Ticket: 52617 **DST#: 2**  
 Test Start: 2013.06.04 @ 02:07:00

## GENERAL INFORMATION:

Formation: **Lans. "C - D"**  
 Deviated: No Whipstock: ft (KB)  
 Test Type: Conventional Bottom Hole (Reset)  
 Time Tool Opened: 04:01:30  
 Tester: James Winder  
 Time Test Ended: 10:05:45  
 Unit No: 57  
**Interval: 3884.00 ft (KB) To 3972.00 ft (KB) (TVD)**  
 Reference Elevations: 2844.00 ft (KB)  
 Total Depth: 3972.00 ft (KB) (TVD) 2839.00 ft (CF)  
 Hole Diameter: 7.88 inches Hole Condition: Fair KB to GR/CF: 5.00 ft

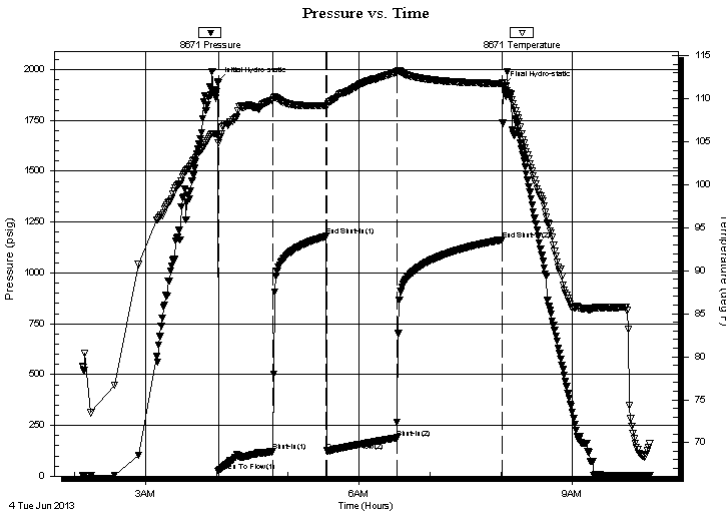
## Serial #: 8671

Inside

Press @ RunDepth: 188.98 psig @ 3885.00 ft (KB) Capacity: 8000.00 psig  
 Start Date: 2013.06.04 End Date: 2013.06.04 Last Calib.: 2013.06.04  
 Start Time: 02:07:05 End Time: 10:05:44 Time On Btm: 2013.06.04 @ 04:01:00  
 Time Off Btm: 2013.06.04 @ 08:02:00

**TEST COMMENT:** 45 - IF: Blow built to BOB (11") in 38 min.  
 45 - IS: No blow back  
 60 - FF: Blow started at 4 min., built to BOB in 55 1/2 min.  
 90 - FS: No blow back

## PRESSURE SUMMARY



Time (Min.)	Pressure (psig)	Temp (deg F)	Annotation
0	1940.78	105.95	Initial Hydro-static
1	23.84	104.92	Open To Flow (1)
47	121.28	109.90	Shut-In(1)
92	1179.85	109.20	End Shut-In(1)
93	123.83	109.15	Open To Flow (2)
151	188.98	113.13	Shut-In(2)
240	1162.66	111.77	End Shut-In(2)
241	1922.18	111.52	Final Hydro-static

## Recovery

Length (ft)	Description	Volume (bbl)
125.00	MCW 76%w, 24%m	0.61
245.00	WCM 65%m, 35%w	3.44

\* Recovery from multiple tests

## Gas Rates

Choke (inches)	Pressure (psig)	Gas Rate (Mcf/d)



**TRILOBITE  
TESTING, INC.**

# DRILL STEM TEST REPORT

**FLUID SUMMARY**

Forestar Petroleum Corporation

**20/1s/31w Rawlins KS**

1801 Broadway STE 900  
Denver, CO 80202

**Pamela Anderson#1-20**

ATTN: Bruce Ard / Justin H

Job Ticket: 52617

**DST#: 2**

Test Start: 2013.06.04 @ 02:07:00

## Mud and Cushion Information

Mud Type: Gel Chem

Cushion Type:

Oil API:

deg API

Mud Weight: 9.00 lb/gal

Cushion Length:

ft

Water Salinity:

32500 ppm

Viscosity: 60.00 sec/qt

Cushion Volume:

bbbl

Water Loss: 6.80 in<sup>3</sup>

Gas Cushion Type:

Resistivity: ohm.m

Gas Cushion Pressure:

psig

Salinity: 1200.00 ppm

Filter Cake: 1.00 inches

## Recovery Information

Recovery Table

Length ft	Description	Volume bbbl
125.00	MCW 76%w , 24%m	0.615
245.00	WCM 65%m, 35%w	3.437

Total Length: 370.00 ft      Total Volume: 4.052 bbl

Num Fluid Samples: 0

Num Gas Bombs: 0

Serial #:

Laboratory Name:

Laboratory Location:

Recovery Comments: RW = .211 ohms @ 72.3 deg F

Chlorides = 32,500 ppm

Serial #: 8671

Inside

Forestar Petroleum Corporation

Pamela Anderson#1-20

DST Test Number: 2

### Pressure vs. Time

