



**TRILOBITE  
TESTING, INC.**

# DRILL STEM TEST REPORT

Forestar Petroleum Corporation

**20/1s/31w Rawlins KS**

1801 Broadway STE 900  
Denver, CO 80202

**Pamela Anderson#1-20**

ATTN: Bruce Ard / Justin H

Job Ticket: 52618

**DST#: 3**

Test Start: 2013.06.04 @ 21:40:00

## GENERAL INFORMATION:

Formation: **Lans. "E- F"**

Deviated: No Whipstock: ft (KB)

Time Tool Opened: 23:42:30

Time Test Ended: 05:06:30

Test Type: Conventional Bottom Hole (Reset)

Tester: James Winder

Unit No: 57

**Interval: 3968.00 ft (KB) To 4052.00 ft (KB) (TVD)**

Reference Elevations: 2844.00 ft (KB)

Total Depth: 4052.00 ft (KB) (TVD)

2839.00 ft (CF)

Hole Diameter: 7.88 inches Hole Condition: Fair

KB to GR/CF: 5.00 ft

**Serial #: 8671 Inside**

Press @ Run Depth: 42.37 psig @ 3969.00 ft (KB)

Capacity: 8000.00 psig

Start Date: 2013.06.04

End Date:

2013.06.05

Last Calib.: 2013.06.05

Start Time: 21:40:05

End Time:

05:06:29

Time On Btm: 2013.06.04 @ 23:42:15

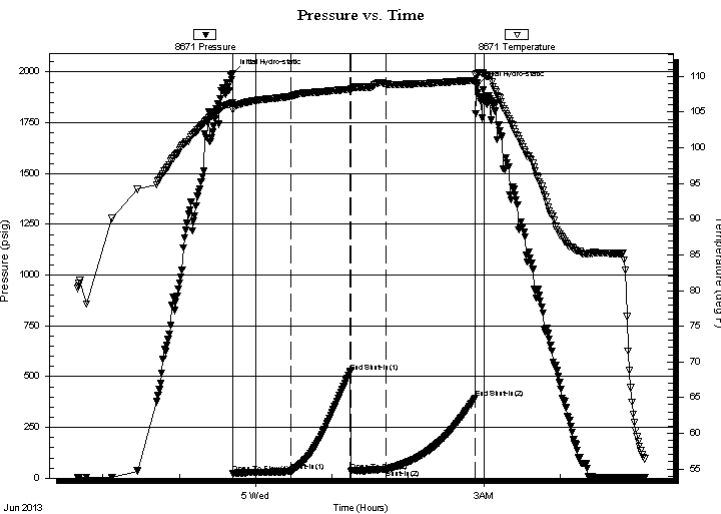
Time Off Btm: 2013.06.05 @ 02:54:00

TEST COMMENT: 45 - IF: Blow built to 1 1/4"

45 - IS: No blow back

30 - FF: No blow

60 - FS: No blow back



## PRESSURE SUMMARY

Time (Min.)	Pressure (psig)	Temp (deg F)	Annotation
0	1993.95	106.31	Initial Hydro-static
1	24.18	105.34	Open To Flow (1)
46	32.58	107.18	Shut-In(1)
93	523.70	108.19	End Shut-In(1)
93	33.99	108.21	Open To Flow (2)
121	42.37	108.94	Shut-In(2)
191	393.42	109.45	End Shut-In(2)
192	1931.69	110.37	Final Hydro-static

## Recovery

Length (ft)	Description	Volume (bbl)
35.00	OCM 77% <sub>m</sub> , 19% <sub>o</sub> , 4% <sub>g</sub>	0.17
10.00	CO 96% <sub>o</sub> , 2% <sub>g</sub> , 2% <sub>m</sub>	0.05
0.00	GIP = 17'	0.00

\* Recovery from multiple tests

## Gas Rates

	Choke (inches)	Pressure (psig)	Gas Rate (Mcf/d)



**TRILOBITE  
TESTING, INC.**

# DRILL STEM TEST REPORT

**FLUID SUMMARY**

Forestar Petroleum Corporation

**20/1s/31w Rawlins KS**

1801 Broadway STE 900  
Denver, CO 80202

**Pamela Anderson#1-20**

ATTN: Bruce Ard / Justin H

Job Ticket: 52618

**DST#: 3**

Test Start: 2013.06.04 @ 21:40:00

## Mud and Cushion Information

Mud Type: Gel Chem

Cushion Type:

Oil API:

37.6 deg API

Mud Weight: 9.00 lb/gal

Cushion Length:

ft

Water Salinity:

ppm

Viscosity: 59.00 sec/qt

Cushion Volume:

bbbl

Water Loss: 6.80 in<sup>3</sup>

Gas Cushion Type:

Resistivity: ohm.m

Gas Cushion Pressure:

psig

Salinity: 1200.00 ppm

Filter Cake: 1.00 inches

## Recovery Information

Recovery Table

Length ft	Description	Volume bbl
35.00	OCM 77% <i>m</i> , 19% <i>o</i> , 4% <i>g</i>	0.172
10.00	CO 96% <i>o</i> , 2% <i>g</i> , 2% <i>m</i>	0.049
0.00	GIP = 17'	0.000

Total Length: 45.00 ft      Total Volume: 0.221 bbl

Num Fluid Samples: 0

Num Gas Bombs: 0

Serial #:

Laboratory Name:

Laboratory Location:

Recovery Comments: Gravity = 37.6 api @ 60 deg F

Serial #: 8671

Inside

Forestar Petroleum Corporation

Pamela Anderson#1-20

DST Test Number: 3

# Pressure vs. Time

