

# Tim J. Lauer

## Petroleum Geologist

Office 316.832.0530  
Cell 316.253.1275

### GEOLOGIST'S REPORT

#### DRILLING TIME AND SAMPLE LOG

COMPANY	Coral Production Corporation		
LEASE	#17-1 Kollman		
FIELD			
LOCATION	330' FNL, 990' FWL of Section		
SEC	17	TWSP	7s RGE 18w
COUNTY	Rooks	STATE	Kansas
CONTRACTOR	Murfin Drilling Rig #16		
SPUD	7-10-2012	COMP	7-16-2012
RTD	3510'	LTD	
MUD UP	2770'	TYPE MUD	Chemical
SAMPLES SAVED FROM	1000' TO RTD		
DRILLING TIME KEPT FROM	2800' TO RTD		
SAMPLES EXAMINED FROM	2900' TO RTD		
GEOLOGICAL SUPERVISION FROM	2875' to RTD		
GEOLOGIST ON WELL	Tim J. Lauer		

### ELEVATIONS

KB 1973'

DF \_\_\_\_\_

GL 1968'

Measurements Are All From Kelly Bushing

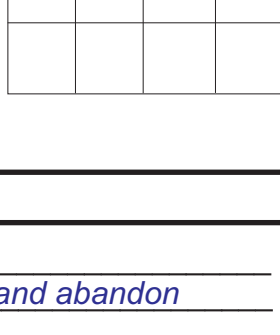
### CASING

CONDUCTOR \_\_\_\_\_  
SURFACE 8-5/8" @ 216'  
PRODUCTION none'

### ELECTRICAL SURVEYS

none

FORMATION TOPS	ELECTRIC LOG	SAMPLE LOG
Anhydrite		1448 (+525)
Topeka		2938 (-965)
Heebner		3142 (-1169)
Toronto		3163 (-1190)
Lansing		3177 (-1204)
Base Ks. City		3409 (-1436)
Arbuckle		3496 (-1523)
Total Depth		3510 (-1537)



### REMARKS

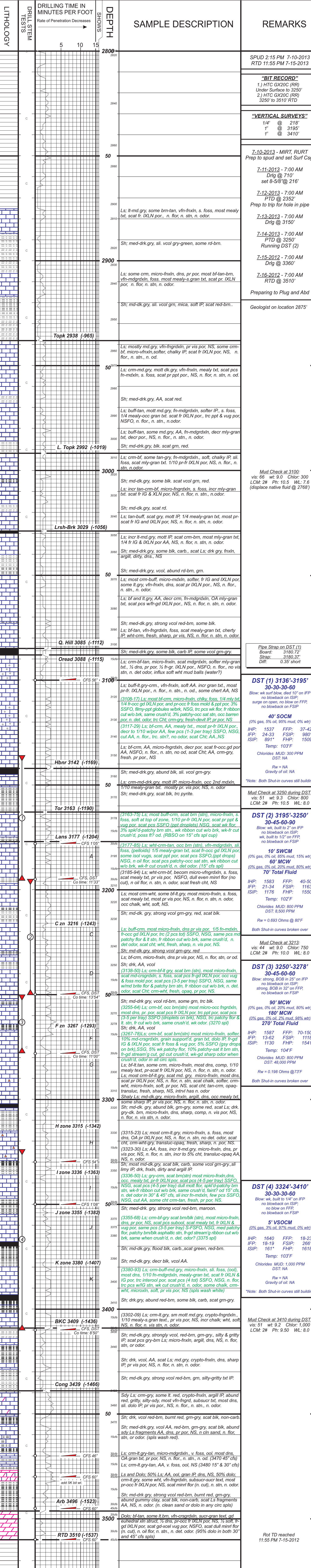
Due to DST results and structural position, operator elected to plug and abandon the location without any further testing.

Respectfully submitted,

*Tim J. Lauer*  
Tim J. Lauer  
7-16-2013

### LEGEND

Anhydrite	Sandstone	Limestone	Shale	Carb Sh	Cherty LS	Chert	Dolomite



COMPANY & WELL Coral Prod Corp #17-1 Kollman

LOCATION 330' FNL, 990' FWL of Section

SEC 17 TWSP 7s RGE 18w

COUNTY Rooks STATE Kansas

### ELEVATIONS

KB 1973'

GL 1968'

