



**TRILOBITE
TESTING, INC.**

DRILL STEM TEST REPORT

Venture Resources, Inc.
2265 S. Wadsworth
Suite 205
Lakewood, CO. 80227
ATTN: Brad Rine

12-11s-18w-Ellis

Ridler A West #7

Job Ticket: 52201

DST#: 1

Test Start: 2013.03.14 @ 04:12:01

GENERAL INFORMATION:

Formation: **B-C-D**

Deviated: No Whipstock: 0.00 ft (KB)

Time Tool Opened: 08:34:31

Time Test Ended: 13:39:01

Test Type: Conventional Bottom Hole (Initial)

Tester: Jason McLemore

Unit No: 54

Interval: 3144.00 ft (KB) To 3200.00 ft (KB) (TVD)

Reference Elevations: 1916.00 ft (KB)

Total Depth: 3200.00 ft (KB) (TVD)

1909.00 ft (CF)

Hole Diameter: 7.80 inches Hole Condition: Good

KB to GR/CF: 7.00 ft

Serial #: 8789

Inside

Press @ RunDepth: 76.23 psig @ 3179.00 ft (KB)

Capacity: 8000.00 psig

Start Date: 2013.03.14

End Date:

2013.03.14

Last Calib.:

2013.03.14

Start Time:

04:12:03

End Time:

13:39:01

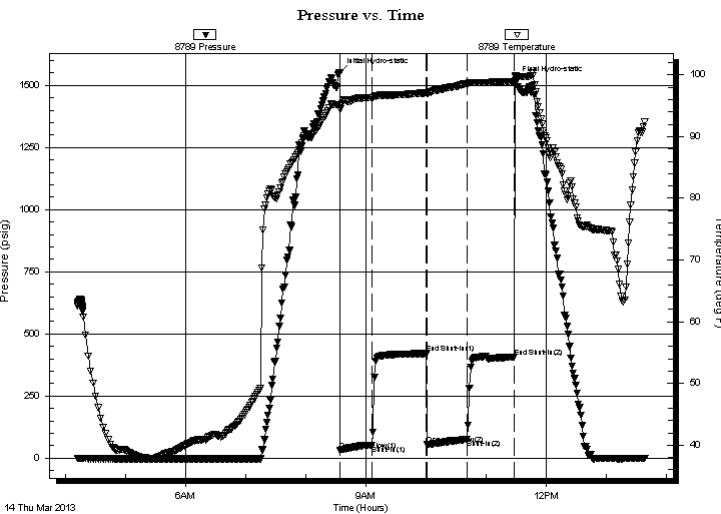
Time On Btm:

2013.03.14 @ 08:33:46

Time Off Btm:

2013.03.14 @ 11:29:31

TEST COMMENT: IFP-Weak Blow, Built to 1-1/8"
ISI-Dead
FFP-Weak Blow, Built to 1-1/8"
FSI-Dead



PRESSURE SUMMARY

Time (Min.)	Pressure (psig)	Temp (deg F)	Annotation
0	1551.73	95.18	Initial Hydro-static
1	32.99	94.42	Open To Flow (1)
33	53.36	96.29	Shut-In(1)
87	421.03	97.09	End Shut-In(1)
88	55.71	96.95	Open To Flow (2)
128	76.23	98.57	Shut-In(2)
175	406.54	98.94	End Shut-In(2)
176	1517.91	99.79	Final Hydro-static

Recovery

Length (ft)	Description	Volume (bbl)
85.00	Watery Mud W/Oil Scum-50%W-50%M	1.19

Gas Rates

Choke (inches)	Pressure (psig)	Gas Rate (Mcf/d)



**TRILOBITE
TESTING, INC.**

DRILL STEM TEST REPORT

FLUID SUMMARY

Venture Resources, Inc.

12-11s-18w-Ellis

2265 S. Wadsworth
Suite 205
Lakewood, CO. 80227
ATTN: Brad Rine

Ridler A West #7

Job Ticket: 52201

DST#: 1

Test Start: 2013.03.14 @ 04:12:01

Mud and Cushion Information

Mud Type: Gel Chem

Cushion Type:

Oil API:

deg API

Mud Weight: 9.00 lb/gal

Cushion Length:

ft

Water Salinity:

46000 ppm

Viscosity: 50.00 sec/qt

Cushion Volume:

bbbl

Water Loss: 7.19 in³

Gas Cushion Type:

Resistivity: ohm.m

Gas Cushion Pressure:

psig

Salinity: 1400.00 ppm

Filter Cake: inches

Recovery Information

Recovery Table

Length ft	Description	Volume bbl
85.00	Watery Mud W/Oil Scum-50%W-50%M	1.192

Total Length: 85.00 ft Total Volume: 1.192 bbl

Num Fluid Samples: 0

Num Gas Bombs: 0

Serial #:

Laboratory Name:

Laboratory Location:

Recovery Comments: Sampler-2000ml Mud, 1000ml Water, Pressure too small to register on gauge

Pressure vs. Time

