



TRILOBITE TESTING, INC.

DRILL STEM TEST REPORT

Venture Resources, Inc.
 2265 S. Wadsworth
 Suite 205
 Lakewood, CO. 80227
 ATTN: Brad Rine

12-11s-18w-Ellis
Ridler A West #7
 Job Ticket: 52202 **DST#: 2**
 Test Start: 2013.03.15 @ 06:50:33

GENERAL INFORMATION:

Formation: **H-I-J-K-L**
 Deviated: No Whipstock: 0.00 ft (KB)
 Time Tool Opened: 09:58:18
 Time Test Ended: 14:50:18
 Interval: **3254.00 ft (KB) To 3366.00 ft (KB) (TVD)**
 Total Depth: 3366.00 ft (KB) (TVD)
 Hole Diameter: 7.80 inches Hole Condition: Good
 Test Type: Conventional Bottom Hole (Reset)
 Tester: Jason McLemore
 Unit No: 54
 Reference Elevations: 1916.00 ft (KB)
 1909.00 ft (CF)
 KB to GR/CF: 7.00 ft

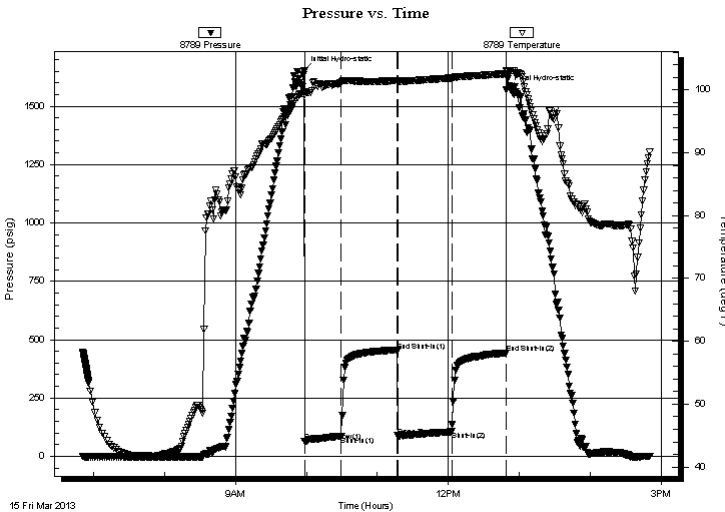
Serial #: 8789

Inside

Press @ Run Depth: 106.11 psig @ 3350.00 ft (KB) Capacity: 8000.00 psig
 Start Date: 2013.03.15 End Date: 2013.03.15 Last Calib.: 2013.03.15
 Start Time: 06:50:35 End Time: 14:50:18 Time On Btm: 2013.03.15 @ 09:58:03
 Time Off Btm: 2013.03.15 @ 12:49:18

TEST COMMENT: IFP-Weak Blow , Built to 2"
 ISI-Dead
 FFP-Weak Blow , Built to 3/4"
 FSI-Dead

PRESSURE SUMMARY



Time (Min.)	Pressure (psig)	Temp (deg F)	Annotation
0	1653.24	99.67	Initial Hydro-static
1	64.34	99.21	Open To Flow (1)
32	86.95	101.14	Shut-In(1)
79	453.00	101.48	End Shut-In(1)
79	87.35	101.26	Open To Flow (2)
125	106.11	101.89	Shut-In(2)
171	442.74	102.58	End Shut-In(2)
172	1571.04	103.10	Final Hydro-static

Recovery

Length (ft)	Description	Volume (bbl)
90.00	Muddy Water-50%W-50%M	1.26

* Recovery from multiple tests

Gas Rates

Choke (inches)	Pressure (psig)	Gas Rate (Mcf/d)



**TRILOBITE
TESTING, INC.**

DRILL STEM TEST REPORT

FLUID SUMMARY

Venture Resources, Inc.

12-11s-18w-Ellis

2265 S. Wadsworth
Suite 205
Lakewood, CO. 80227
ATTN: Brad Rine

Ridler A West #7

Job Ticket: 52202

DST#: 2

Test Start: 2013.03.15 @ 06:50:33

Mud and Cushion Information

Mud Type: Gel Chem

Cushion Type:

Oil API:

deg API

Mud Weight: 9.00 lb/gal

Cushion Length:

ft

Water Salinity:

59000 ppm

Viscosity: 50.00 sec/qt

Cushion Volume:

bbbl

Water Loss: 7.19 in³

Gas Cushion Type:

Resistivity: ohm.m

Gas Cushion Pressure:

psig

Salinity: 1400.00 ppm

Filter Cake: inches

Recovery Information

Recovery Table

Length ft	Description	Volume bbbl
90.00	Muddy Water-50%W-50%M	1.262

Total Length: 90.00 ft Total Volume: 1.262 bbl

Num Fluid Samples: 0

Num Gas Bombs: 0

Serial #:

Laboratory Name:

Laboratory Location:

Recovery Comments:

