



Services, Inc.

CHARGE TO: Venture Resources
 ADDRESS:
 CITY, STATE, ZIP CODE

TICKET No 23948

PAGE 1 OF 2

1. SERVICE LOCATIONS	Hays ks	WELL/PROJECT NO.	7	LEASE	Redder A west	COUNTY/PARISH	Ellis	STATE	KS	CITY		DATE	3-17-13	OWNER	
2. SERVICE	Ness City	TICKET TYPE	<input checked="" type="checkbox"/> SERVICE	CONTRACTOR		RIG NAME/NO.		SHIPPED VIA	GT	DELIVERED TO	Location	ORDER NO.			
3. SALES		WELL TYPE	<input checked="" type="checkbox"/> SALES									WELL PERMIT NO.			
4. REFERRAL LOCATION		WELL CATEGORY	D-1	WELL INSTRUCTIONS	Develop	JOB PURPOSE	5 1/2 LongString					WELL LOCATION	Sec 12, Twp 11S, R 18W		

PRICE REFERENCE	SECONDARY REFERENCE/ PART NUMBER	ACCOUNTING			DESCRIPTION	QTY.	UM	QTY.	UM	UNIT PRICE	AMOUNT
		LOC	ACCT	DF							
575		1			MILEAGE # 112	30	mi			6.00	180.00
578		1			Pump Charge LongString	1	ea			1500.00	1500.00
221		1			Logrod KCL	2	gal			25.00	50.00
281		1			Mud Plug	500	gal			1.25	625.00
290		1			D-Act	5	gal			35.00	175.00
402		1			Centralizers	9	ea			70.00	630.00
403		1			Cement Basket	4	ea			250.00	1000.00
405		1			Formation Packer Shoe	1	ea			1400.00	1400.00
406		1			Latch Down Plug + GPHle	1	ea			250.00	250.00

LEGAL TERMS: Customer hereby acknowledges and agrees to the terms and conditions on the reverse side hereof which include, but are not limited to, **PAYMENT, RELEASE, INDEMNITY, and LIMITED WARRANTY** provisions.

MUST BE SIGNED BY CUSTOMER OR CUSTOMER'S AGENT PRIOR TO START OF WORK OR DELIVERY OF GOODS

DATE SIGNED 3-17-13 TIME SIGNED 2:00 A.M. P.M.

REMIT PAYMENT TO:

SWIFT SERVICES, INC.
 P.O. BOX 466
 NESS CITY, KS 67560
 785-798-2300

SURVEY	AGREE	UN-DECIDED	DIS-AGREE	PAGE TOTAL	TOTAL
OUR EQUIPMENT PERFORMED WITHOUT BREAKDOWN?				5810	
WE UNDERSTOOD AND MET YOUR NEEDS?				10748	
OUR SERVICE WAS PERFORMED WITHOUT DELAY?				16,558	13
WE OPERATED THE EQUIPMENT AND PERFORMED JOB CALCULATIONS SATISFACTORILY?				Subtotal	16,558.13
ARE YOU SATISFIED WITH OUR SERVICE?	<input checked="" type="checkbox"/> YES	<input type="checkbox"/> NO		E1115	795.69
<input type="checkbox"/> CUSTOMER DID NOT WISH TO RESPOND				TAX 6.3%	
				TOTAL	17,353.82

SWIFT OPERATOR John Brown APPROVAL

CUSTOMER ACCEPTANCE OF MATERIALS AND SERVICES The customer hereby acknowledges receipt of the materials and services listed on this ticket

Thank You!



PO Box 466
Ness City, KS 67560
Off: 785-798-2300

TICKET CONTINUATION

TICKET No. 23948

CUSTOMER Venture

WELL Rider Awest #7

DATE 3-17-13

PAGE 2 OF 2

PRICE REFERENCE	SECONDARY REFERENCE/ PART NUMBER	ACCOUNTING			TIME	DESCRIPTION	WELL				UNIT PRICE	AMOUNT
		LOC	ACCT	DF			QTY.	UM	QTY.	UM		
330		2				Swift Multi Density	500	SKS			16.50	8250.00
276		2				Arcele	125	LBS			2.00	250.00
581		2				SERVICE CHARGE					2.00	1000.00
583		2				MILEAGE CHARGE					1.00	1248.13
						TOTAL WEIGHT	49925					
						LOADED MILES	520					
						CUBIC FEET	520	SKS				
						TON MILES	1248.13					
CONTINUATION TOTAL												10748.13

X

JOB LOG

SWIFT Services, Inc.

DATE 3-17-13 PAGE NO.

CUSTOMER Venture WELL NO. 7 LEASE Ridler A west JOB TYPE 5 1/2 Longstring TICKET NO. 23948

CHART NO.	TIME	RATE (BPM)	VOLUME (BBL) (GAL)	PUMPS		PRESSURE (PSI)		DESCRIPTION OF OPERATION AND MATERIALS
				T	C	TUBING	CASING	
	0115							on location 5 1/2 x 14"
								TD 3426 SJ 42 TP 3430 Insert 3388
								Centralizers 1,3,5,7,9,11,13, 54, 64 Baskets 2, 12, 55, 65
	0040							wait for welder for 8 5/8 collar Start casing
	0215							Break circulation
	0252							Drop Ball to set Packer shoe
	0305	8	7					Plug RH 30
		5	12				350	Start Mud Flush
		5	20				350	Start KcL Flush
	0315	5	177				350	Start Cement 320 SKS @ 11.2 ppg 100 SKS @ 12.5 ppg 50 SKS @ 15.5 ppg
			38					
			10					
	0414							Drop Plug wash out Pump + lines
	0415	5						Displace Plug
	0430		82.6				1000 1500	Load Plug Release Dry Circulate 15 SKS to Pit wash up Back up Job Complete Thank You Josh, Brian, Doug, John J.

X

M. Bradford Rine

Consulting Geologist, Licensed and Certified

Scale 1:240 (5"=100') Imperial
Measured Depth Log

Well Name: RIDLER "A" West #7 - VENTURE RESOURCES, INC.
Location: SW-NW-NW, of Section 12 - 11S - 18W
License Number: API: 15-051-26493-0000
Spud Date: March 09, 2013
Surface Coordinates: 990' FNL & 330' FWL,
of Section
Bottom Hole Vertical Wellbore
Coordinates:
Ground Elevation (ft): 1909 Ft. K.B. Elevation (ft): 1916 Ft.
Logged Interval (ft): 2800 Ft. To: 3428 Ft. Total Depth (ft): RTD 3428 Ft. LTD 3425 Ft.
Formation: Arbuckle at Total Depth
Type of Drilling Fluid: Chemical

Region: Ellis County, Kansas
Drilling Completed: March 16, 2013
Infill Development-
Bemis Shutts Field
5-1/2" Casing Set

Printed by MUD.LOG from WellSight Systems 1-800-447-1534 www.WellSight.com

Operator

Company: Venture Resources, Inc.
Address: 2255 South Wadsworth, Suite #205
Lakewood, Colorado 80227

Geologist

Name: M. Bradford Rine
Company: Consulting Geologist, Kansas Lic. #204, Wyo #189, AAPG Cert. #2647
Address: 100 South Main, Suite #415
Wichita, Kansas 67202

Remarks

Based on sample observations, drill stem test results, and electric log evaluation, it was the decision of the Operator, of the "Ridler A West #7", to set production casing for an open hole completion.

Respectfully submitted,
M. Bradford Rine, Geologist

Drilling Information

Rig: American Eagle #2
Pump: Emsco D-375 6.5 x 14
Drawworks: Emsco 250T
Collars: 423' 2-1/4 x 6-1/4
Drillpipe: 4.5" 16.6# XH
Toolpusher: Marty Mills

Mud: Mudco (Gary Schmidtberger)
Gas Detector: None
Drill Stem Tests: Trilobite (Jason McLemore)
Logs: Pioneer (
Water: Water well in Bemis
Company Representatives:
Office: Todd Smith
Field: John Cearley

Daily Drilling Status

Date:	Operations/Depth/Comments
03-08-13	MIRT @ 0'
03-09-13	Spud, set surface casing, plug down 7:30 pm. @ 221'
03-10-13	Drilling @ 315'
03-11-13	Drilling @ 1557'
03-12-13	Drilling @ 2350'
03-13-13	Drilling @ 2890'
03-14-13	Trip in Hole with DST #1 @ 3200'
03-15-13	Trip out of Hole for DST #2 @ 3366'
03-16-13	Trip out of Hole with DST #3 @ 3428'

Casing Record, Bit Record, Deviation Surveys

CASING:

Conductor: None

Surface:

Ran 5 jts 8-5/8" 23#, tallied 210.66' + 11' landing jt, set @ 221'. (Allied) Cement with 160 sx common, 3% CC, 2%gel. Cement did circulate.

Production:

BITS:

No.	Size	Make	Model	Depth In	Depth Out	Hours
1	12-1/4	JZ	RR	0	221'	3.5
2	7-7/8	JZ	HA25L	221	3428'	83.5

DEVIATION SURVEYS:

Deviation:	Depth:	Deviation:	Depth:
.5*	221'	1*	3428'
1*	3200'		



**TRILOBITE
TESTING, INC.**

DRILL STEM TEST REPORT

Venture Resources, Inc.
2265 S. Wadsworth
Suite 205
Lakewood, CO 80227
ATTN: Brad Rine

12-11s-18w-Ellis

Ridler A West #7

Job Ticket 52201

DST#: 1

Test Start 2013.03.14 @ 04:12:01

GENERAL INFORMATION:

Formation: **B-C-D**

Deviated: No Whipstock: 0.00 ft (KB)

Time Tool Opened: 08:34:31

Time Test Ended: 13:39:01

Test Type: Conventional Bottom Hole (Inbal)

Tester: Jason McLemore

Unit No: 54

Interval: **3144.00 ft (KB) To 3200.00 ft (KB) (TVD)**

Total Depth: 3200.00 ft (KB) (TVD)

Hole Diameter: 7.80 inches Hole Condition: Good

Reference Elevations 1916.00 ft (KB)

1909.00 ft (CF)

KB to GR/CF 7.00 ft

Serial #: 8789

Inside

Press@RunDepth: 76.23 psig @ 3179.00 ft (KB)

Start Date: 2013.03.14

End Date:

2013.03.14

Capacity: 8000.00 psig

Start Time: 04:12:03

End Time:

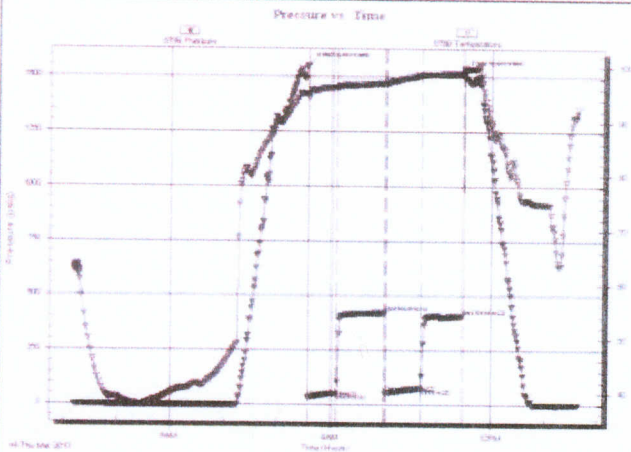
13:39:01

Last Calib: 2013.03.14

Time On Btm: 2013.03.14 @ 08:33:46

Time Off Btm: 2013.03.14 @ 11:29:31

TEST COMMENT: IFF-Weak Blow Built to 1-1/8"
ISI-Dead
FFP-Weak Blow Built to 1-1/8"
FSI-Dead



PRESSURE SUMMARY

Time (Mn.)	Pressure (psig)	Temp (deg F)	Annotation
0	1551.73	95.18	Initial Hydro-static
1	32.99	94.42	Open To Flow (1)
33	53.36	96.29	Shut-In(1)
87	421.03	97.09	End Shut-In(1)
88	55.71	96.95	Open To Flow (2)
128	76.23	98.57	Shut-In(2)
175	406.54	98.94	End Shut-In(2)
176	1517.91	99.79	Final Hydro-static

Recovery

Length (ft)	Description	Volume (BB)
85.00	Watery Mud W/Oil Scum-50%W-50%M	1.19

Gas Rates

	Choke (inches)	Pressure (psig)	Gas Rate (Mcf/d)



**TRILOBITE
TESTING, INC.**

DRILL STEM TEST REPORT

Venture Resources, Inc

12-11s-18w-Ellis

2265 S. Wadsworth
Suite 205
Lakewood, CO 80227
ATTN: Brad Rine

Ridler A West #7

Job Ticket: 52202

DST#: 2

Test Start: 2013.03.15 @ 06:50:33

GENERAL INFORMATION:

Formation: **H-I-J-K-L**

Deviated: No Whipstock: 0.00 ft (KB)

Time Tool Opened: 09:58:18

Time Test Ended: 14:50:18

Test Type: Conventional Bottom Hole (Reset)

Tester: Jason McLemore

Unit No: 54

Interval: **3254.00 ft (KB) To 3366.00 ft (KB) (TVD)**

Total Depth: 3366.00 ft (KB) (TVD)

Hole Diameter: 7.80 inches Hole Condition: Good

Reference Elevations: 1916.00 ft (KB)

1909.00 ft (CF)

KB to GR/CF: 7.00 ft

Serial #: 8789

inside

Press@RunDepth: 106.11 psig @ 3350.00 ft (KB)

Start Date: 2013.03.15

End Date:

2013.03.15

Capacity: 8000.00 psig

Start Time: 06:50:35

End Time:

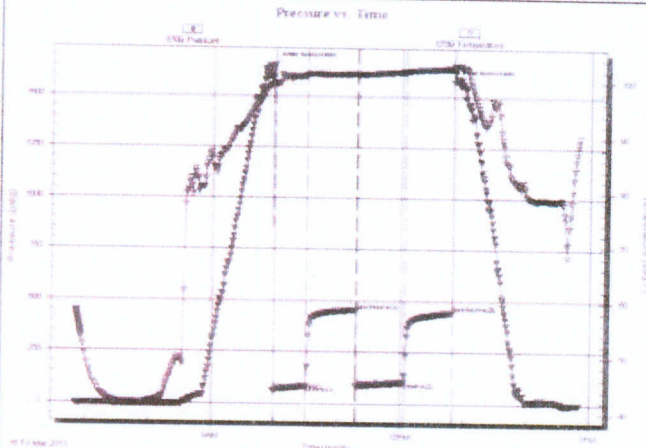
14:50:18

Last Calib: 2013.03.15

Time On Btm: 2013.03.15 @ 09:58:03

Time Off Btm: 2013.03.15 @ 12:49:18

TEST COMMENT: FFP-WeakBlow Built to 2"
ISI-Dead
FFP-Weak Blow Built to 3/4"
FSI-Dead



PRESSURE SUMMARY

Time (Mn.)	Pressure (psig)	Temp (deg F)	Annotation
0	1653.24	99.67	Initial Hydro-static
1	64.34	99.21	Open To Flow (1)
32	86.95	101.14	Shut-In(1)
79	453.00	101.48	End Shut-In(1)
79	87.35	101.26	Open To Flow (2)
125	106.11	101.89	Shut-In(2)
171	442.74	102.58	End Shut-In(2)
172	1571.04	103.10	Final Hydro-static

Recovery

Length (ft)	Description	Volume (bbl)
90.00	Muddy Water-50%W-50%M	1.26

* Recovery from multiple tests

Gas Rates

Choke (inches)	Pressure (psig)	Gas Rate (Mcf/d)

Rock Types

Anhy	Coal	Lmst	Shcol	Siltysh
Bent	Congl	Meta	Shgy	Shlysiltst
Brec	Dol	Mrlst	Sltst	Sandyls
Cht	Gyp	Salt	Ss	
Clyst	Igne	Shale	Till	

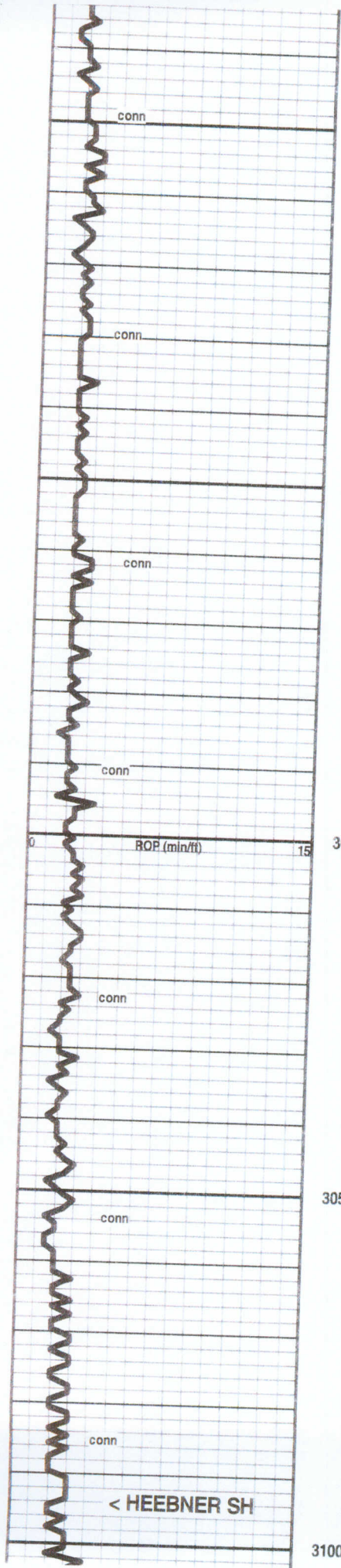
Accessories

MINERAL	Gyp	FOSSIL	Ostra	Sltstrg
Anhy	Hvymin	Algae	Pelec	Ssstrg
Arggrn	Kaol	Amph	Pellet	TEXTURE
Arg	Marl	Belm	Pisolite	Boundst
Bent	Minxl	Bioclst	Plant	Chalky
Bit	Nodule	Brach	Strom	Cryxin
Brecfrag	Phos	Bryzoa	STRINGER	Earthy
Calc	Pyr	Cephal	Anhy	Finexin
Carb	Salt	Coral	Arg	Grainst
Chtdk	Sandy	Crin	Bent	Lithogr
Chtlt	Silt	Echin	Coal	Microxln
Dol	Sil	Fish	Dol	Mudst
Feldspar	Sulphur	Foram	Gyp	Packst
Ferrpel	Tuff	Fossil	Ls	Wackest
Ferr		Gastro	Mrst	
Glau		Oolite		

Other Symbols

OIL SHOW	Spotted	Gas	INTERVAL
Gas show	Ques/trace		Core
Even	Dead		Dst

ROP (min/ft)	Depth	Lithology	Geological Descriptions	Remarks
0	15			
	1100			
	50			



[No Show]

Ls wh-cr-gy, fn xln, dns in pt, subchalky in pt, sli foss in pt

Sh gy-blk, carb in pt

Ls cr-tan-brn-gy, vfn-fn xln, dns, some white chalky pcs, foss

Ls cr-tan-pl gy, vfn-fn xln, some chalky, foss, scatt chert: wh-cr, ool in pt

Sh black, carb

Ls wh-cr-tan, fn xln, chalky in pt, dns in pt, some pr xln por, foss

[No Show]

Ls cr-tan, fn xln, mostly dns, Rr pr xln por, few inclusions of chertified foss

Ls wh-cr-tan, fn xln, chalky in pt, dns in pt, scatt calcite patches, foss, scatt pyrite patches

Sh black, carb

Ls wh-cr-tan, fn xln, mostly dns, some pr xln por, foss to abund foss (some weathered to gy)

[No Show]

Ls wh-cr, fn xln, subshalky with patchy pr xln por, foss in pt, pr-fr crush

[Ftn Odor, Rr dull patchy flour with patches of lt brn stn in v low % of pcs, No show of free oil, Rr scatt patchy brn stn]

Ls wh-cr, fn xln, chalky in pt, dns in pt, foss, chert: fresh, gy, opac

Sh black, carb

< HEEBNER SH

3094 (-1178)

2900

2950

3000

3050

3100

ROP (min/ft)

conn

conn

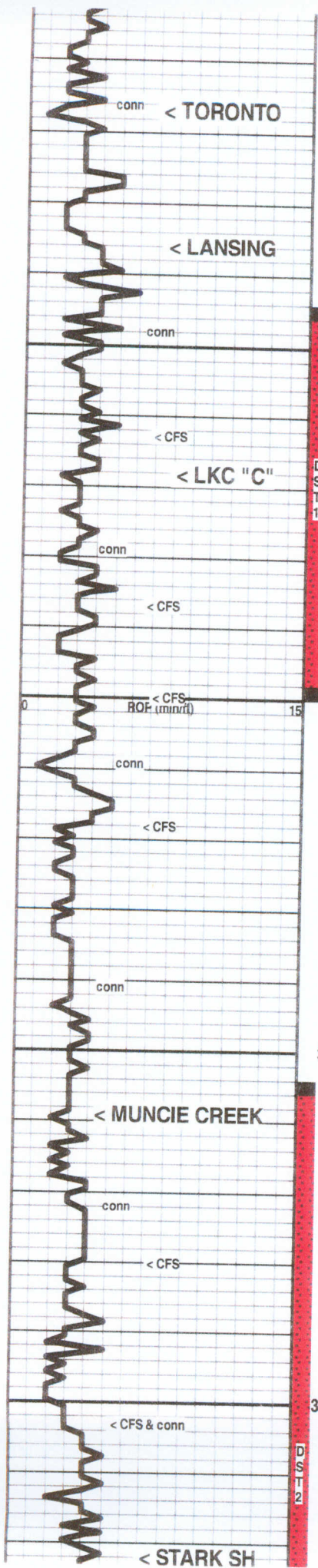
conn

conn

conn

conn

conn



Sh gy-blk to pl gm. mushy to subcarb, tr of pyrite

----- 3115 (-1199)

Ls wh-cr-tan, fn xln, dns to pr xln por, mushy-chalky in pt, foss

[No Show]

Sh gy

----- 3136 (-1220)

Ls wh-cr-tan, fn xln, mostly dns, some chalky, Trace of patchy pr xln por, foss in pt

[No Odor, No Flour, V Rr scatt trace of spotty stn, NSFO]

Sh gy-gmish

Ls wh, fn xln, scatt pr xln por, Rr pp por, foss, Rr ool

[No Odor, Rr scatt spotty dull flour, Rr scatt spotty stn with sli show oily film & lt brn FO on brk]

Sh av-nl am, mushy to soft

----- 3168 (-1252)

Ls cr, fn xln, scatt patches of pr xln por, some ool pcs with scatt interool pores, foss, trace of ool chert

[Mild Odor, Scatt dull-mod flour, scatt spotty-patchy stn, sli shows of Brn FO-v sli gassy in pt & NVL oil, few pcs with even stn]

Ls wh-cr, fn xln, subchalky in pt, dns in pt, Rr patches and pcs with pr xln por, foss, ool

[V Fnt Odor, V Rr dull flour, scatt patches and pcs with tan-lt brn stn, NSFO]

Sh gy-black, carb in pt

Ls wh-cr-tan, vfn-fn xln, mostly dns, Rr scatt pr xln por, foss

[No Odor, No Flour, few pcs with spotty stn, NSFO]

Ls wh-cr, fn xln, chalky in pt, scatt patches and pcs with pr xln por, V Rr scatt pp pores, some barren por/foss, few ool pcs, chert: fresh, wh-pl gy, subopaq

[V Fnt Odor, Rr dull flour, V low % of pcs with lt brn spotty-patchy stn with sli show of oily film on brk & trace of NVL oil on brk]

Ls wh-cr-pl gy, fn xln, dns and firm in pt, chalky-subchalky and softer in pt, foss in pt

----- 3259 (-1343)

Sh black, carb

Sh gy-gmish

Ls cr-tan-pl gy, fn xln, scatt patches & pcs with pr xln por and scatt pp por, foss, some ool pcs

[V Fnt Odor, Scatt patchy mod flour, spotty-patchy stn, some pcs with sli show of brn FO, few pcs with fr show of brn FO]

Ls wh-cr-tan, fn xln, chalky in pt, dns in pt, foss

Sh gy-dk gy

Ls wh-cr, fn xln, scatt patches & pcs with pr xln por, foss in pt, ool in pt, widely scatt pp por & sm vugs, some ool chert

[Fnt Odor, Moderate amt of dull-mod flour, Fair amt of yellow-tan stn, widely scatt spotty dk stn with sli show FO on brk]

Ls wh-cr, fn xln, scatt patches & pcs with pr xln por and pp por, foss, ool in pt, Rr isolated vugs

[Fnt Odor, scatt patchy-spotty dull-mod flour, with tan to lt brn spotty-patchy stn, v sli-sli show of NVL oil & brn FO on brk]

----- 3322 (-1406)

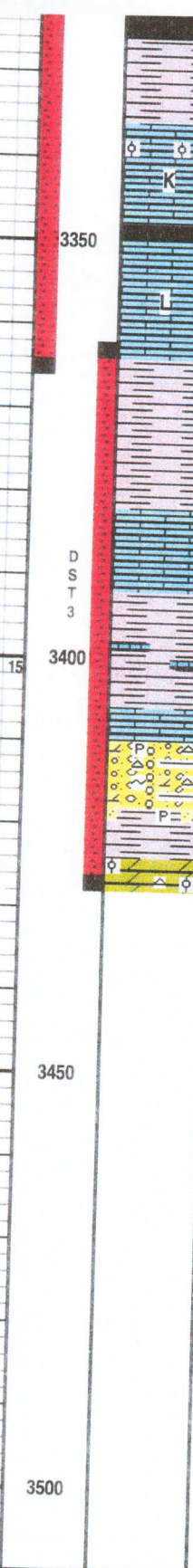
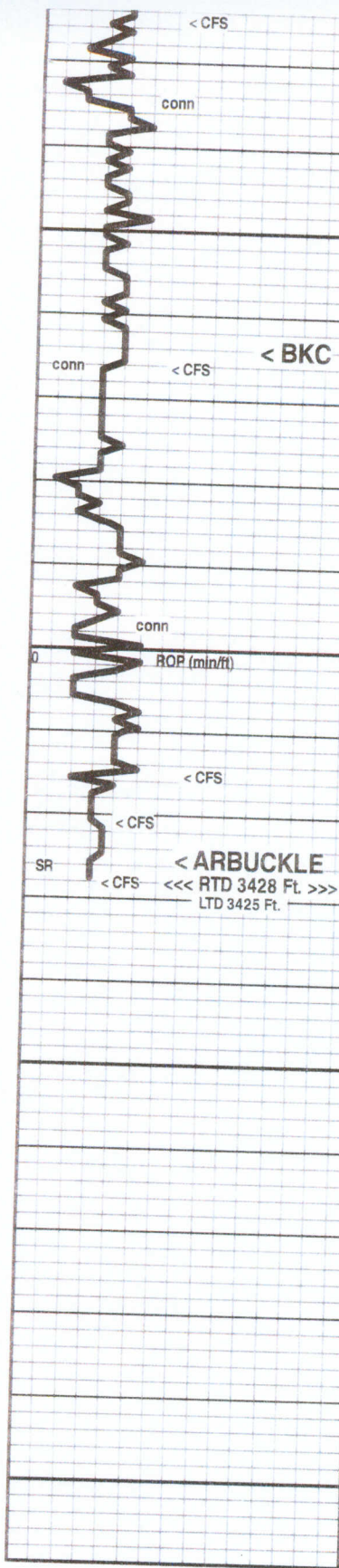
Pipe Strap @ 3200 ft:
1.86 ft Short (no correction)

DST #1: 3144 - 3200 (LKC B,C,D)
Times: 30-45-45-45
Initial Blow: Wk, built to 1-1/8" i.b.
Final Blow: Wk, Built to 1-1/8" i.b.
Rec: 85' wcm/sso 50%w 50%
FS Rec: 2000ml mud, 1000ml wtr
IHP: 1552 FHP: 1518
IFP: 33-53 FFP: 56-76
ISIP: 421 FSIP: 407
BHT: 100°F

7:00 AM, March 14, 2013

Mud Check, Trip for DST 1 @ 3200':
Vis Wt WL LCM PV VP
50 8.8 7.2 4 12 25
Chl Hd pH Solids
1400 Nil 11.0 3.6

DST #2: 3255-3366 (LKC H,I,J,K,L)
Times: 30-45-45-45
Initial Blow: Wk, built to 1-3/4" i.b.
Final Blow: Wk, built to 3/4" i.b.
Rec: 90' mud cut water (59000 ppm)
FS: 30#, 1500ml wtr, 1500ml mud
IHP:nn1653 FHP: 1571
IFP: 64-87 FFP: 87-106
ISIP: 453 FSIP: 443



Sh black, carb

Sh gy-pl gm, mushy to soft

Ls wh-cr, fn xln, mostly dns, some patches of v pr xln por, Rr poorly devel vugs, ool in pt
[No Odor, V Rr dull flour, Rr scatt patches of tan-t brn stn, Rr v sli show NVL oil in feew pcs]

Sh black, carb

Ls wh-cr, fn xln, vfn-fn xln, dns with v Rr and V pr patches of xln por, chalky in pt.
[No Odor, No flour, Rr spots of stn, NSFO]

----- 3364 (-1448)

Sh red-grm-gy, subearthy-subsilty-subfiss

Ls wh-cr, vfn-fn xln, dns

Sh red-gy, mushy-soft (washes red), some dns wh in spis

Ls wh-cr, vfn xln, dns
Congl: Sd-shale-dol-chert, shale is gm silty to waxy to brittle, dol subsucr dns, sd fn-md grain wh-green, pr-gd fri, rd'd

[Mod Odor, scatt dull flour, scatt dk brn-blk stn, sli show of hvy DO-NVL oil in Sd & dol]
Sh pl gm-brt epidote gm, mushy-soft-brittle-subfiss, subsilty in pt, sdy in pt: pr-fr sort, rd'd-subrd

----- 3425 (-1509)

Dol, cr-tan, fn xln, some md xln, mostly dns, scatt pr xln por, Rr sm vugs, ool chert in pt, Rr ool dol, mostly pr crush
[3425-3428: Stg Odor, Scatt dull-mod flour, Scatt lt brn-brn spotty-patchy-even stn, Sli show NVL oil, sli to fr show FO in some pcs]

BHT: 103°F

7:00 AM, March 15, 2013

Mud Check, CFS @ 3366':
Vis Wt WL LCM PV YP
47 8.8 7.4 4 15 23
Chi Hd pH Solids
1300 Tr 10.5 3.6

DST #3: 3362-3428 (Arbuckle)
Times: 05-20-05-20
Initial Blow: Stg, b.o.b. 40-sec
Final Blow: Stg, b.o.b. 40-sec
Rec: 785' GOMCW: 15% g 15% o 65% w
05% m (Chi/wtr 27000 ppm)
FS: 52#, 500ML gas, 1300ml oil, 1200ml wtr
IHP: 1750 FHP: 1567
IFP: 274-309 FFP: 372-425
ISIP: 981 FSIP: 989
BHT: 107°F

7:00 AM, March 16, 2013

Mud Check, On bottom with DST 3 @ 3428':
Vis Wt WL LCM PV YP
60 8.9 7.8 6 15 29
Chi Hd pH Solids
1300 Tr 10.5 4.3