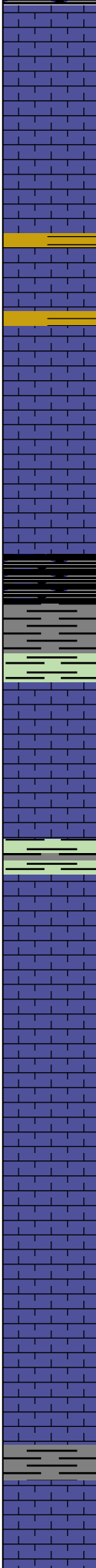
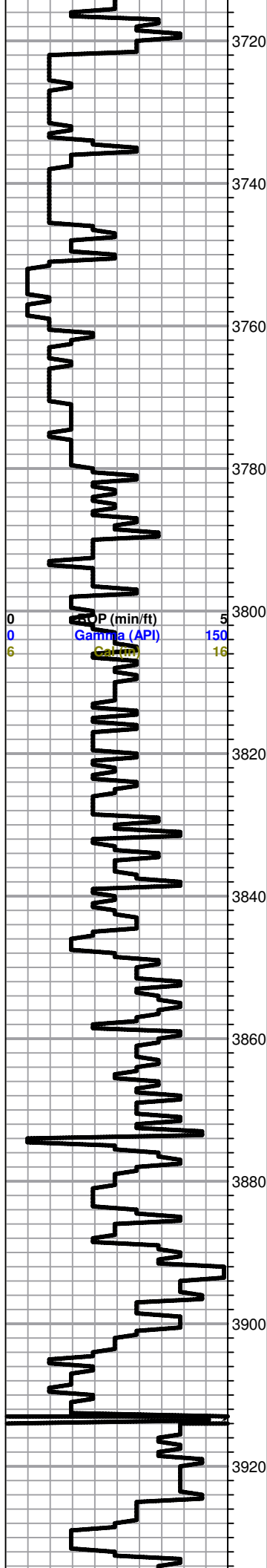


Ls-crm/tan, fine to few med xln, dense, poor vis por



Ls-gry/tan, fxln, poor vis por, dense

Ls-crm/tan, fxln, few fossils, poor vis por, chalky
Black carbon shale

Ls-crm/tan, gry, f-med xln, slightly dolomitic,
fossils, poor iner xln por, chalky

Ls-crm/tan, f-med xln, fossils, poor iner xln por,
trace spotty brwn stains, NSFO, no odor

Heebner 3796.0 (-1279.0) -1293.0

Black carbon shale

Toronto 3815.0 (-1298.0) 0.0

Ls-crm/tan, f-med xln, poor iner xln por, chalky

Ls-crm/tan, fxln, poor vis por, few fossils, chert-
boney wht

Lansing 3837.0 (-1320.0) 0.0

Ls-crm/tan/grym fxln, fossils, poor vis por, cherty

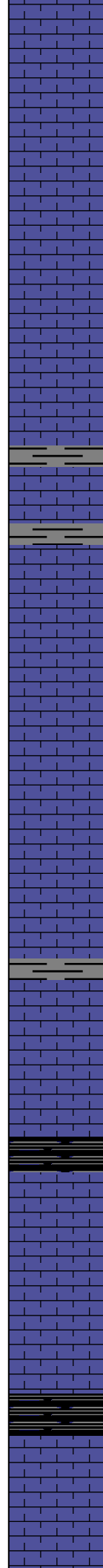
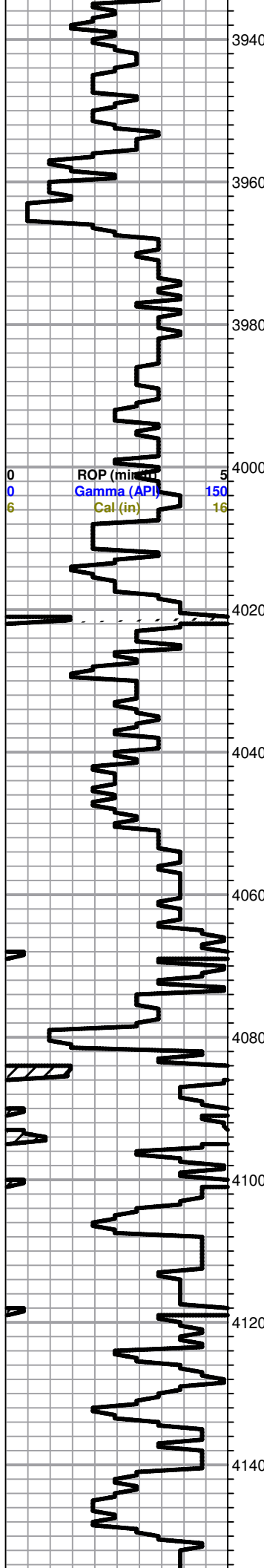
Ls-crm/tan, fxln, few fossils/ool, poor vis por,
Shale-gry/grn

A/A

Ls-crm/tan/wht, fxln, dense, poor vis por,
fossils/ool, trace dark brown spotty stains, NSFO,
chalky

Ls-crm/tan, fxln, dense, ool, poor vi spor, cherty in
part

0	Total Gas (units)	100
0	C1 (units)	100
0	C2 (units)	100
0	C3 (units)	100
0	C4 (units)	100



A/A Chalky

Ls-crm/wht/tan, fxln, few fossils, poor vis por, Trace black carbon shale

Ls-crm/wht/tan, fxln, fossils/ool, poor scattered por, no vis shows, chalky

Ls-crm/tan, fxln, ool, dense, poor vis por

Ls-crm/tan/wht, fxln, poor iner xln por, ool, few fossils, chert-boney wht slightly chalky, Shale-gry

Ls-tan/crm, fxln, dense, poor vi spor, Black carbon shale

A/A Chert-tan/crm/boney wht

Ls-gry/tan, fxln, fossils/ool, dense, poor vis por

A/A Dense, poor vis por

Ls-crm/tan, fxln, ool/fossils, poor ppt to iner xln por with scattered oom por, no vis shows, chalky

Stark 4094.0 (-1577.0) 0.0

Black carbon shale

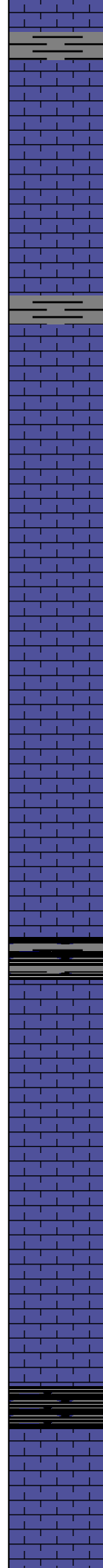
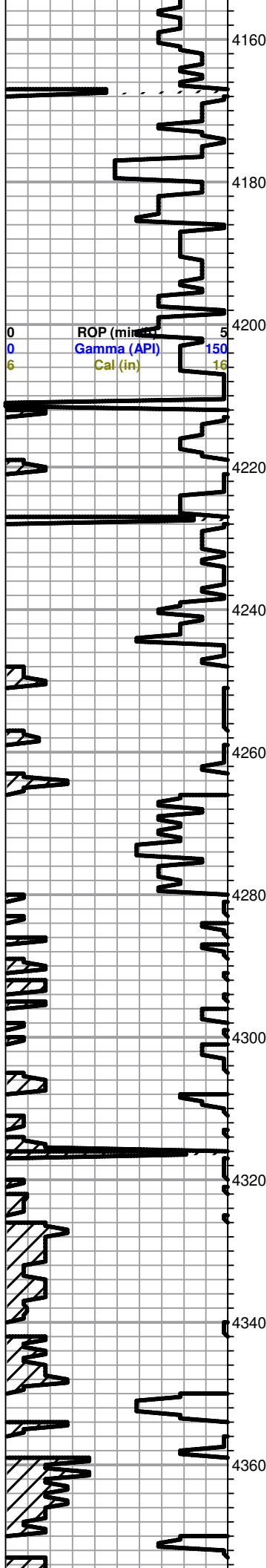
Ls-crm/tan, fxln, ool/fossils, poor scattered por, chert-tan

Ls-crm/tan, fxln, finely ool, poor vis por

A/A Black carbon shale

Ls-tan/buff, fxln, dense, poor vis por

0	Total Gas (units)	100
0	C1 (units)	100
0	C2 (units)	100
0	C3 (units)	100
0	C4 (units)	100



Chert-boneywhl/tan

Ls-gry/tan/buff, fxln, dense, poor vis por,

Ls-crm/tan, fxln, sucrosic, poor scattered por, cherty, chalky

Base KC 4181.0 (-1664.0) 0.0

Ls-crm/tan, fxln, poor vis por, dense

Marmaton 4203.0 (-1686.0) 0.0

Ls-crm/tan, fxln, poor scatteredd por, dense, trace edge stains

L-crm/wht, fxln, dense, slightly chalky, poor scattered por, Trace stains, NSFO, cherty

A/A

Ls-tan/gry, fxln, few fossils, dense, poor vis por, chalky

Ls-crm/tan/ltt gry, fxln, fossils, dense, slightly chalky, Shale-brwn

Ls-tan/gry, fxln, dense, poor vis por

Pawnee 4296.0 (-1779.0) 0.0

Ls-gry/tan, fxln, dense, poor vis por, Chert-peach

Ls-gry/tan, fxln, dense, poor vi spor

Ls-A/A Dark gry-black shaley lime-firm, brittle, no vis por,

Black carbon shale

Fort Scott 4354.0 (-1837.0) 0.0

Ls-tan/buff, fxln, fossils/ool, dense, poor vis por, chert- tan/crm

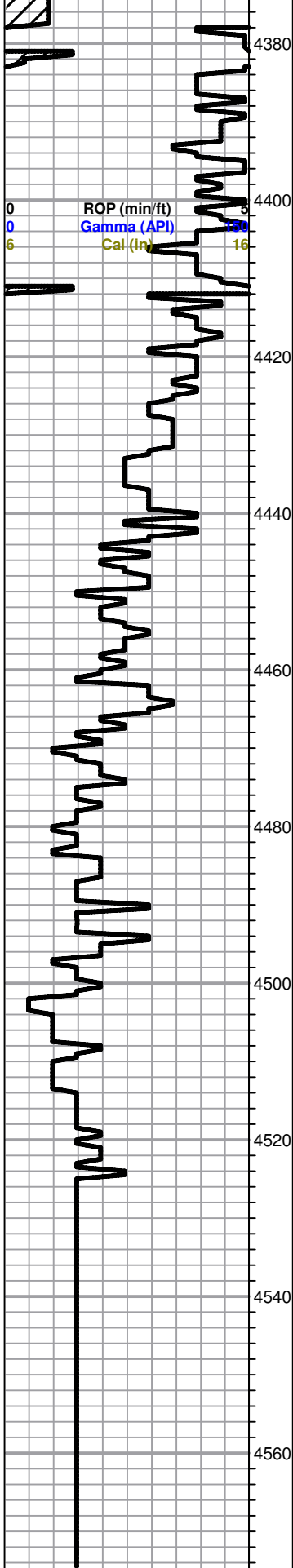
Ls-tan/gry, fxln, dense, fossils/ool

DST #1 4164-4265
30-30-30-30

IF: Surface Blow Died in 10 minutes

Recovery:
5' drilling mud

Pressures:
ISIP 66 psi
FSIP 58 psi
IFP 48-51 psi
FFP 51-52 psi
HSH 2071-2069 psi



Cherokee 4377.0 (-1860.0) 0.0

Black carbon shale

Ls-gry/tan, fxln, dense, poor vis por

Ls-gry/tan/buff, fxln, ool, dense, poor vis por

Ls-tan/crm/lt gry, fxln, dense, poor vi spor,

A/A

Sand 4430.0 (-1913.0) 0.0

Sand-wht/gry/buff, f-grained, sub ang, friable, poor inner gran por, Trace spotty stains, NSFO, no odor

Mississippi 4448.0 (-1931.0) 0.0

Dol-crm/tan, fxln, scattered medium rhomb xln, dense, poor/fair inner xln por wit h good scatered vug por, no vis shows, no odor

Dol-crm/tan, fxln, scattered fair vug por, no vis shows, Chert- Boney wht/crm

Dol and Chert- A/A

Dol-crm/tan, f-few med xln, poor inner xln to finely vug por, no vis shows, Chert-boney wht/crm

Dol-crm/tan, fxln, dense, poor vis por,

0	Total Gas (units)	100
0	C1 (units)	100
0	C2 (units)	100
0	C3 (units)	100
0	C4 (units)	100