



Woolsey Operating Company, LLC

Scale 1:240 (5"=100') Imperial

Measured Depth Log

Well Name: Lincoln Trust #2 H
Location: Section 14 - Township 34 South - Range 11 West
License Number: API: 15-007-23998-01-00 **Region:** Barber County, KS
Spud Date: March 21, 2013 **Drilling Completed:** April 13, 2013
Surface Coordinates: N 1/2 - NE 1/4 - SE 1/4
2310' FSL and 660' FEL
Bottom Hole Coordinates:
Ground Elevation (ft): 1375' **K.B. Elevation (ft):** 1392'
Logged Interval (ft): 3000' **To:** 5234' **Total Depth (ft):** 5234'
Formation: Heebner ----> Mississippian
Type of Drilling Fluid: Chemical mud, Water/Flozan
Printed by WellSight Log Viewer from WellSight Systems 1-800-447-1534 www.WellSight.com

OPERATOR

Company: Woolsey Operating Company, LLC
Address: 125 N. Market, Suite 1000
Wichita, KS 67202

GEOLOGIST

Name: Billy G. Klaver
Company: Woolsey Operating Co. LLC
Address: 125 N. Market, Wichita Kansas, 67202

COMMENTS

Surface Casing: 20" X 53#/ft conductor set at 45' with 4.5 yds of grout. Ran 8 joints of new 13 3/8" X 48#/ft casing to 329' KB (tally 329") with 330 sx Class A, 2% cc, 3% gel. Cement did circulate.
Ran 124 joints of new 7" X 23#/ft intermediate casing to 5221' KB with 250 sx.

Dan D Rig 6 Bit Record"

#1 17 1/2" RT RR in at 45', out at 335'

#2 12 1/2" RT RR in at 335', out at 771

#3 8 3/4" RTC R-25-APDH, out at 3996' #4 8 7/8" RTC R-25AP out at 5234', #5-8 6 1/8" RTC R-50 PDH

Gas Detector: Woolsey Operating Co, Gas Trailer #2

Mud System: Mud-Co. Brad Bortz, Terry Ison, Engineers

Calmena: Heath Marshall, Mark Sanders, Directional Drillers,

MWD Hands: Shane Lewis, David Jay

REMARKS


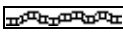
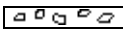
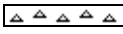


CREWS







Steven Ellington, Tool Pusher, Sammy Fry Relief Pusher


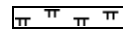

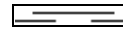


Jack Lambert, Johnnie Stone, Daytime drillers






Terry Stark, Tanner Barber, Night drillers

ROCK TYPES

 Anhy
 Bent
 Brec
 Cht
 Clyst
 Coal

 Congl
 Sdy dolo
 Shy dolo
 Dol
 Gyp
 Sdy lmst

 Lmst
 Mrlst
 Salt
 Shale
 Sltst
 Ss

 Black sh
 Gry sh
 Shale
 Shysltst
 Sltysht

ACCESSORIES

MINERAL

- Anhy
- Arg
- Bent
- Bit
- Brecfrag
- Calc
- Carb
- Chtdk
- Chtlt
- Dol
- Ferrpel
- Ferr
- Glau
- Gyp
- Marl
- Nodule
- Phos
- Pyr
- Salt
- Sandy
- Silt

- Chlorite
- Dol
- Sand
- Slty

FOSSIL

- Algae
- Amph
- Belm
- Bioclst
- Brach
- Bryozoa
- Cephal
- Coral
- Crin
- Echin
- Fish
- Foram
- Fossil
- Gastro
- Oolite
- Ostra

- Pelec
- Pellet
- Pisolite
- Plant
- Strom
- Fuss
- Oomoldic

- Grysh
- Gryslt
- Lms
- Sandylms
- Sh
- Slststn

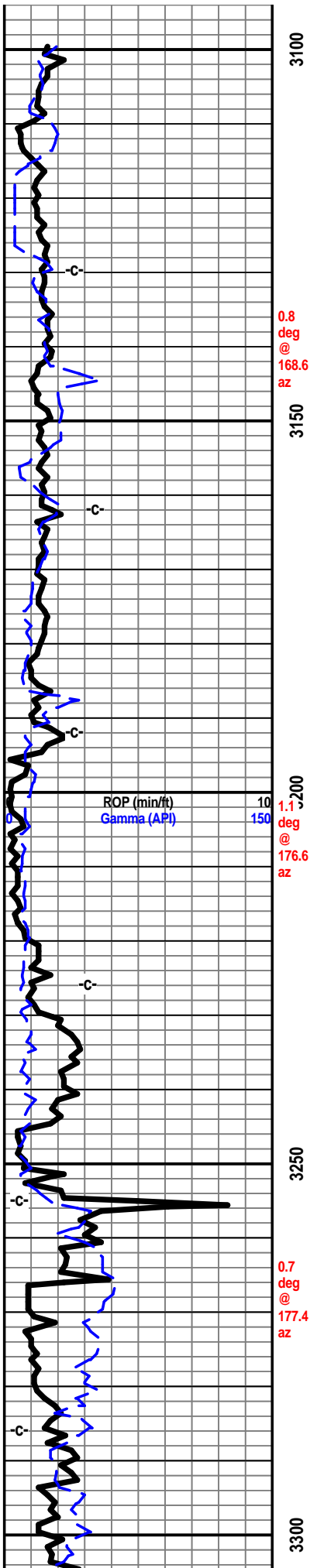
STRINGER

- Anhy
- Arg
- Bent
- Coal
- Dol
- Gyp
- Ls
- Mrst
- Slststrg
- Ssstrg
- Carbsh
- Clystn
- Dol

TEXTURE

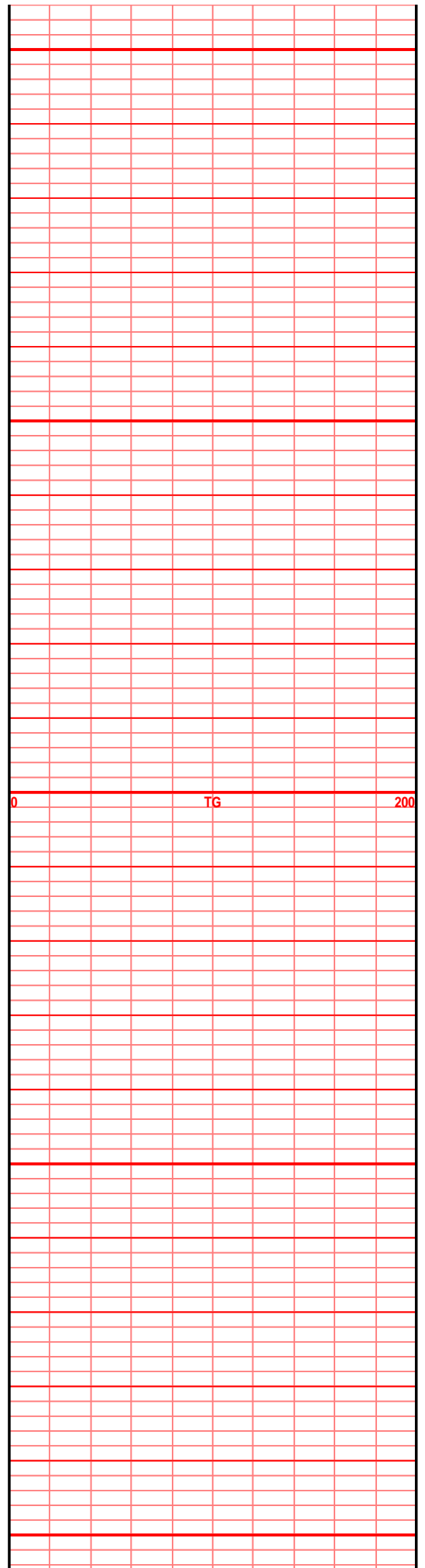
- Boundst
- Chalky
- Cryxln
- Earthy
- Finexln
- Grainst
- Lithogr
- Microxln
- Mudst
- Packst
- Wackest

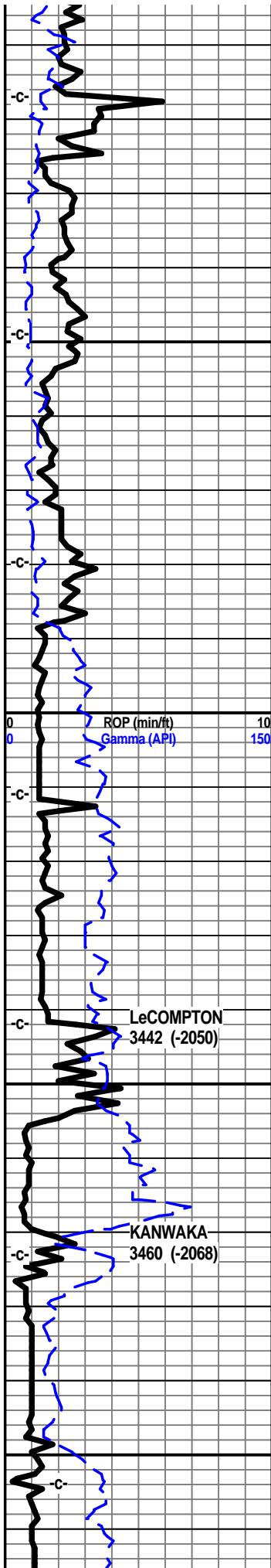
Curve Track 1		Depth	Lithology	Geological Descriptions	TG, C1-C5	
ROP (min/ft)	Gamma (API)				TG (units)	C1-C5 (units)
0	0	30		Control wells: Woolsey Operating Co. Lincoln Trust #1, N 1/2 SE 1/4, 14-34S-11W, Tri-Ex's Miller #1, SW NW NE NE, 23-34S-11W, Kimmel's RV Nelson #1 OWWO, NE SW NW SW, 24-34S-11W.	0	200
		3050		Daily Activity as of 7 am: March 21, 2013 Set conductor March 22, 2013 MIRT, Dan D Drlg Rig 11 March 23, 2013 Spud 7 am March 24, 2013 Rat hole ahead at 410' March 25, 2013 Nipple up BOP, pick up directional tools at 771' March 26, 2013 Drilling at 1080' March 27, 2013 Drilling at 1860' March 28, 2013 Drilling at 2600' March 29, 2013 Drilling at 3411' March 30, 2013 TOOH at 3996' March 31, 2013 Drilling at 4240' April 1, 2013 Drilling at 4560' April 2, 2013 Drilling at 4797' April 3, 2013 Drilling at 5155' April 4, 2013 Running 7" casing April 5, 2013 Drill plug 8 am		



Sample Tops: (TVD)

- Lecompton 3442 (-2050)
- Kanwaka 3460 (-2068)
- Heebner 3658 (-2266)
- Toronto 3666 (-2274)
- Douglas 3715 (-2323)
- Brown Lime 4076 (-2684)
- Quindaro 4177 (-2785)
- Iola 4216 (-2824)
- Stark 4344 (-2952)
- Hushpuckney 4377 (-2985)
- Pawnee 4531 (-3139)
- Cherokee Grp 4576 (-3184)
- Mississippi 4630 (-3239)



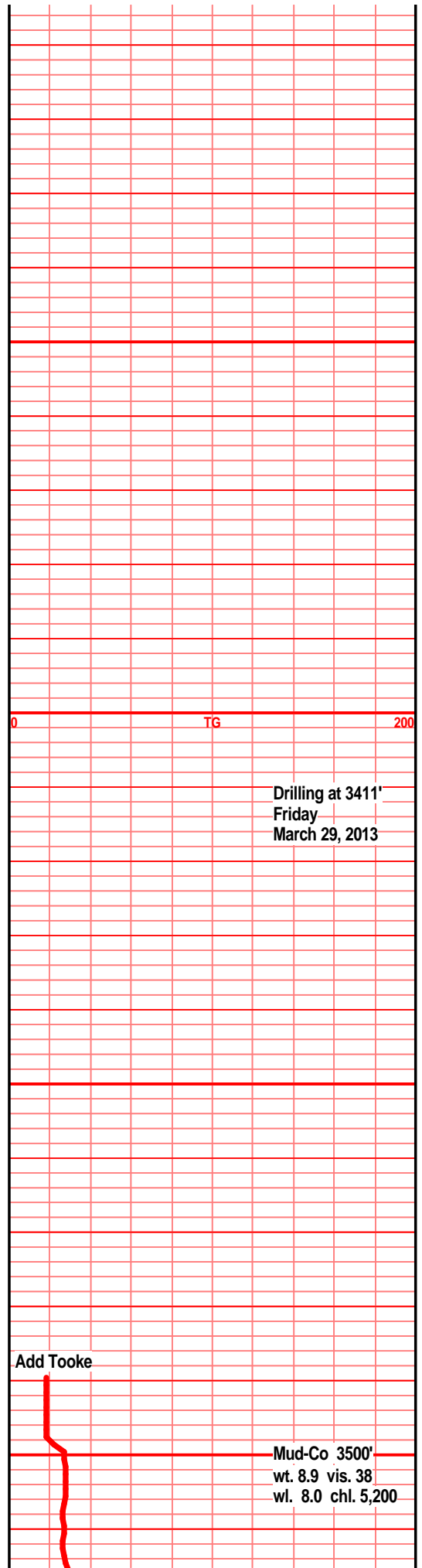
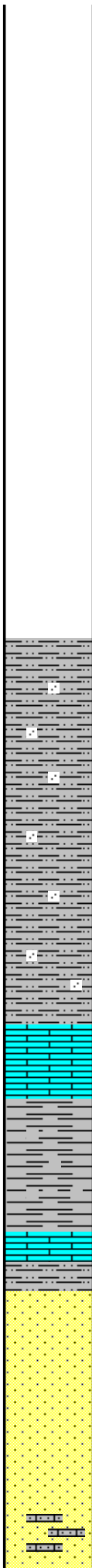


0.6 deg @ 43.4 deg

1.0 deg @ 30.8 az

0.5 DEG @ 28.5 AZ

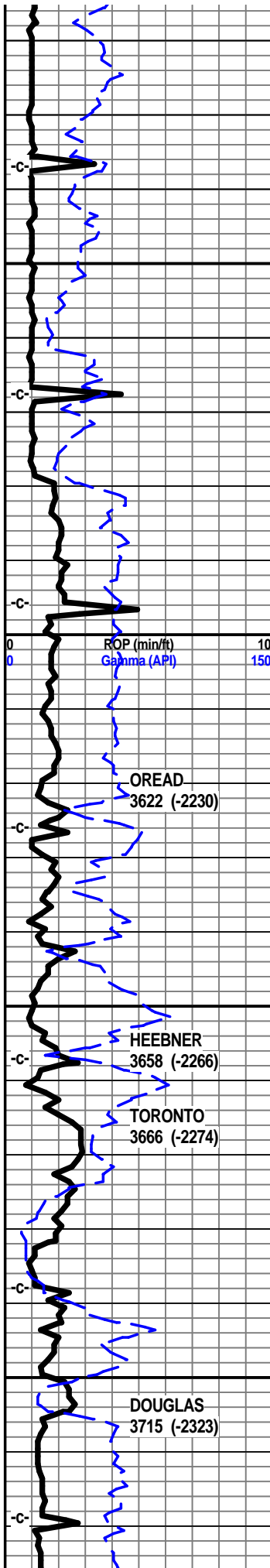
0.5 deg



Drilling at 3411'
Friday
March 29, 2013

Add Tooke

Mud-Co 3500'
wt. 8.9 vis. 38
wl. 8.0 chl. 5,200



@ 29.2 az

3550

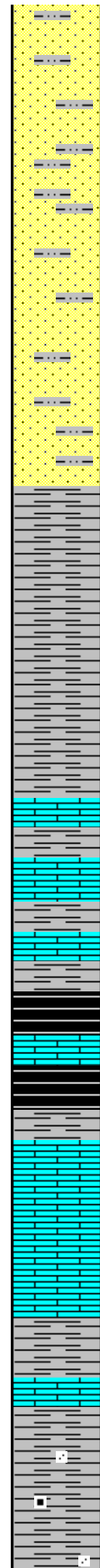
0.6 deg @ 39.9 az

3600

3650

0.6 deg @ 27.8 az

3700



sst off wht lt gry, tr lt gry green, f grnd, prly sorted, ang/sub ang grains, prly cem to sub fria, calc cem, tr arg, blk min specks, tr glau, tr blk carb flks

shl gry med gry, sndy, silty gritty, sst aa

shl gry med gry, gritty, silty, mic, lst tan drk tan brn f vf xln dns hrd blk ang, tr calc xln fill, tr micro foss frags

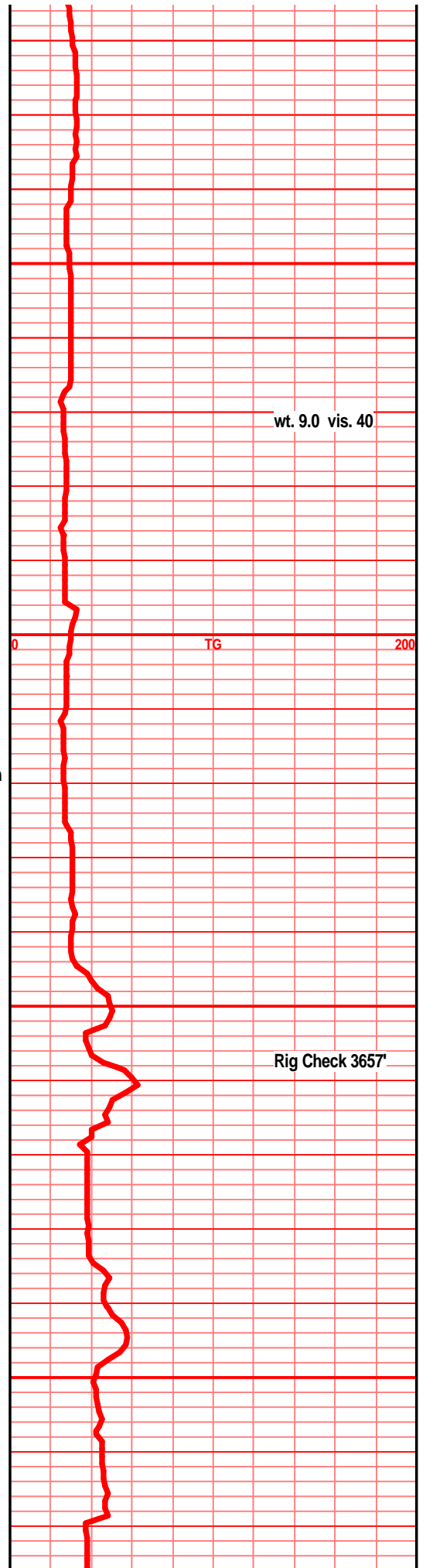
shl gry med gry silty calc, lst tan gry drk gry/brn f vf lxn dns hrd blk ang calc fill, arg/clay fill, tr micro foss frags

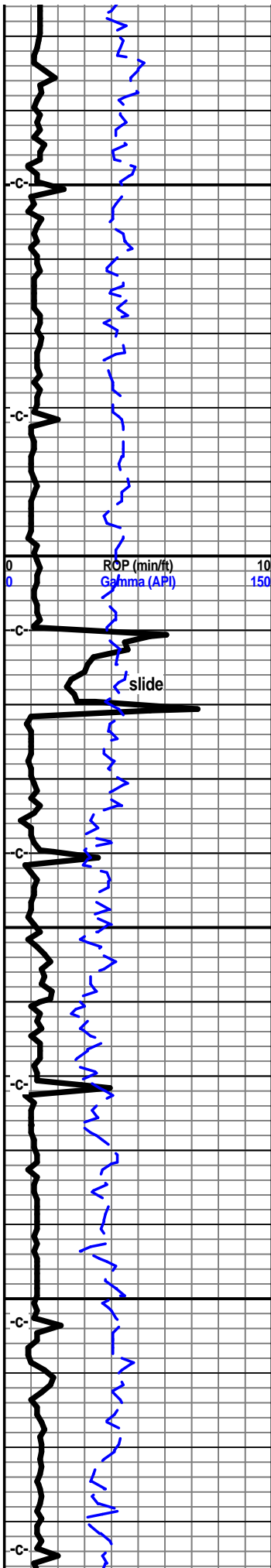
shl gry drk gry gry/brn, drk brn/blk, blk carb, wxy grsy, silty, abun gas bubs, in spl: lst tan gry brn f vf xln dns hrd blk ang

lst wht off wht, f sli med xln, gran soft, sub chlky, tr micro foss, inter xln gran por, abun wht shrp frsh opa q chrt shards,

shl gry med gry silty gritty calc, lst tan gry some lt brn/brn, f sli vf xln dns hrd blk ang arg, some silty, gritty, sndy text,

shl gry med gry silty gritty, vf grnd sub ang/ang snd grn inclu, mic in prt, blk carb flk inclu



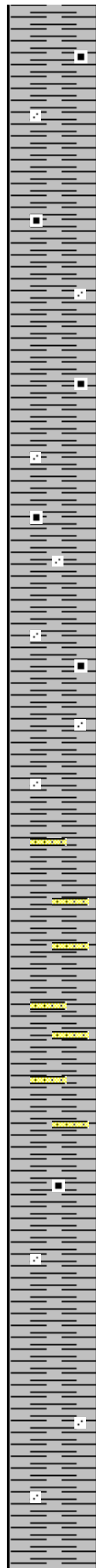


1.0 deg @ 29.9 az

ROP (min/ft) 10
Gamma (API) 150

0.4 deg @ 18.7 az

3750
3800
3850
3900



inclu

shl gry lt med gry, silty gritty, f vf grn snd grn inclu, sub ang/ang, mic in prt, blk carb flk inclu

shl gry lt gry silty gritty, sndy, vff grnd sub ang snd grn inclu, mic in prt, some blk carb inclu,

shl gry, lt med gry silty gritty, mic in prt, sndy gritty aa, blk carb pcs/inclu aa, spls wsh lt gry

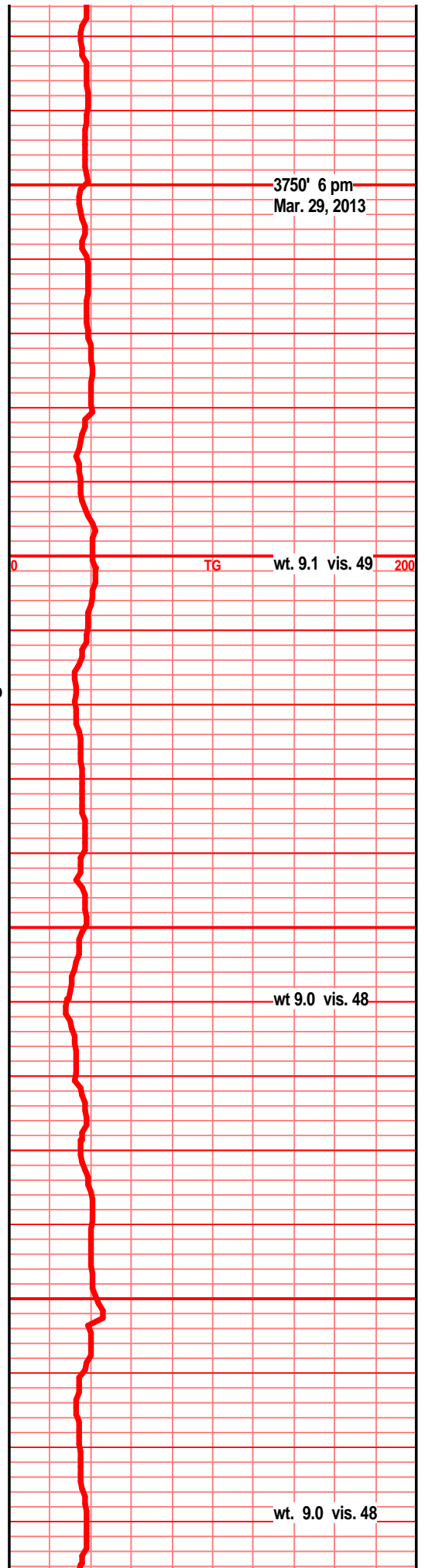
shl gry med gry silty gritty sndy, mic in prt, sub ang/and snd grn inclu, tr/some blk carb flks,

shl gry med/lt gry, silty gritty, mic, carb flks, sub ang/ang clear snd grn inclu, prly srted, arg,

shl gry med/lt gry silty gritty mic, snd grn inclu aa, sst lt gry tr off wht, f grnd sub ang grnd, prly srted, prly cem, calc cem, sub fria

shl gry lt med/lt gry silty gritty, sndy, mic. sub ang/ang snd grn inclu, tr blk carb flks, sst aa,

shl gry med gry, tr lt med drk gry silty soft gritty,

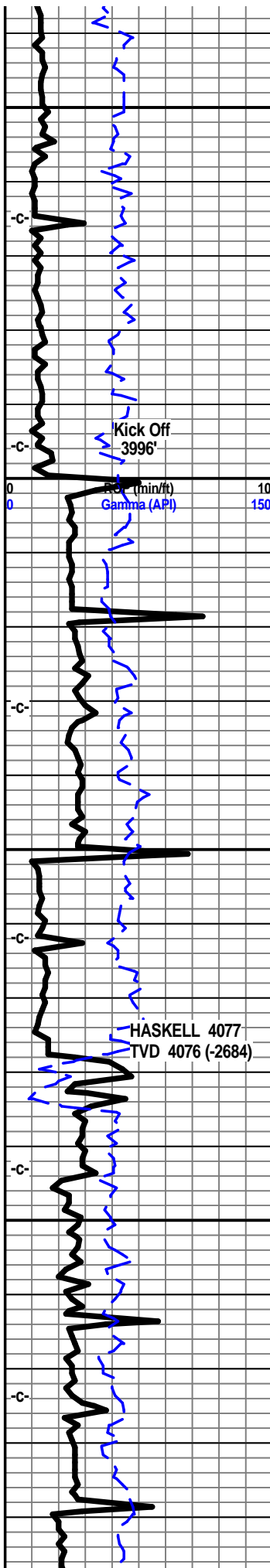


3750' 6 pm
Mar. 29, 2013

TG wt. 9.1 vis. 49 200

wt 9.0 vis. 48

wt. 9.0 vis. 48



0.5 deg @ 40.5 az
3930

0.1 deg @ 198.7 az
4000

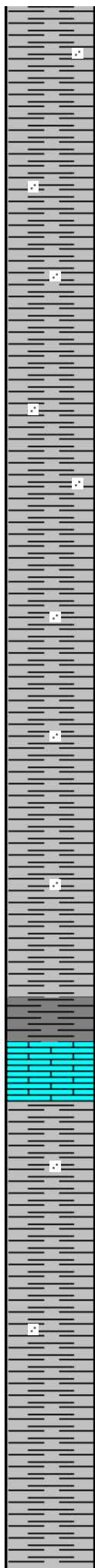
2.0 deg @ 185.6 az
4076

4.7 deg @ 182.1 az
4076

8.2 deg @ 181.3 az
4076

11.7 deg @ 180.0 az
4100

14.8 deg @ 179.3 deg



shl gry drk med lt drk gry silty gritty soft gran in prt, tr mic, tr sndy gritty text,

shl gry med gry, silty, some gritty, tr mic, tr sndy, some snd gran inclu, gran blk in prt,

sh gry med some drk gry, silty gritty, some snd inclu, soft muddy in prt, wsh drk gry, some foss frags

shl gry, med drk gry, silty soft, muddy in pr, gritty in prt, spls wsh drk gry, new spl catcher needs to improve!

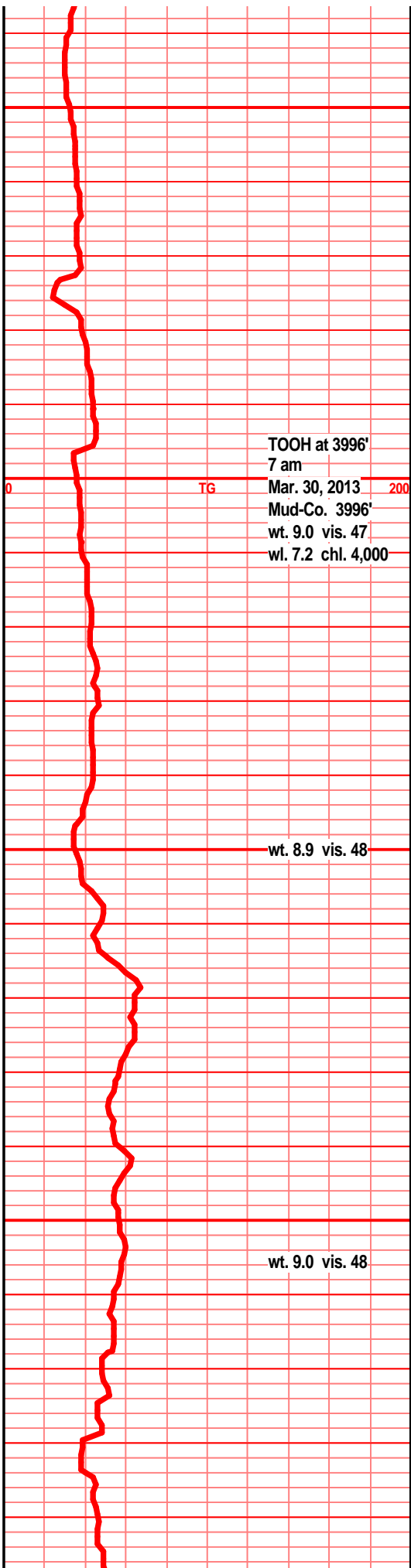
shl gry med drk gry, silty soft blk muddy, gritty in prt

shl med/drk gry silty soft muddy, tr gritty gran, wsh drk gry, lst drk tan brn, f sli med xln blk ang dns hrd, tr foss frags, calc xln fill

shl gry me drk gry silty tr gritty, blk ang soft muddy pcs

shl gry med gry drk gry, soft silty gran muddy, spls wsh drk gry

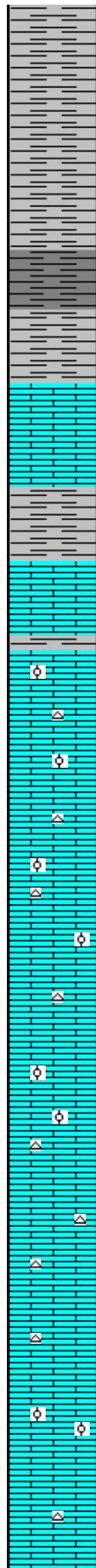
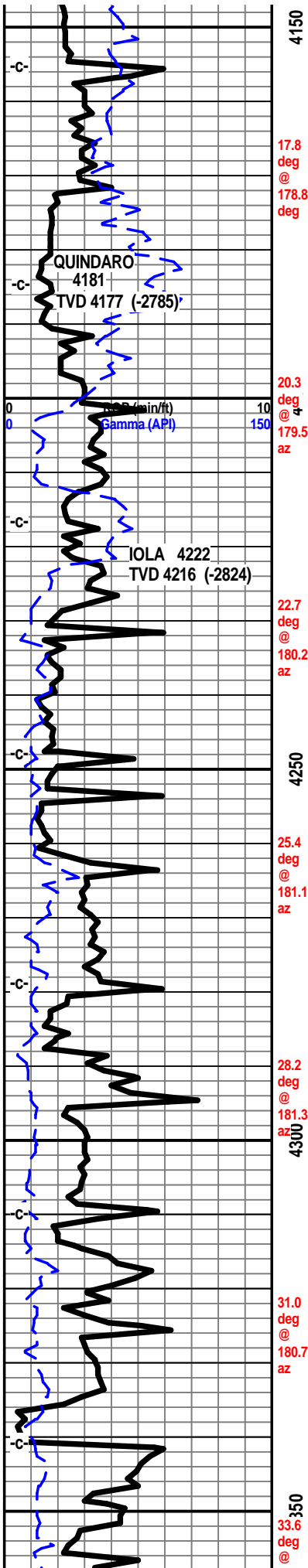
shl gry drk gry silty soft muddy



TOOH at 3996'
7 am
Mar. 30, 2013
Mud-Co. 3996'
wt. 9.0 vis. 47
wl. 7.2 chl. 4,000

wt. 8.9 vis. 48

wt. 9.0 vis. 48



shl gry dkr gry soft silty gritty muddy

shl drk gry, silty soft, muddy, tr blk carb text, wxy grsy text, gas bubs

lst crm gry tan buff tan f sli med xln sub chlky foss frags, calc xln fill, much drk gry blk shls, semi carb in some

shl gry calc, lst off wht tan buff f xli med xln gran sub chlky, foss frags, tr foss ool, calc xln fill

lst wht off wht lt gry buff, f sli med xln, blkly ang flky, sub chlky, foss frags, tr foss ool, calc xln fill, tr chrt wht shrp frsh opa

lst wht off wht lt gry tr buff f xli med xln blkly flky, sub chlky to chlky, foss frags, calc xln fill, foss ool, chrt wht shrp frsh

lst wht off wht lt gry tr buff, f sli med xln blkly flky, foss frags, foss ool, sub chlky to chlky soft gran, chrt wht shrp frsh opa.

lst wht off wht lt gry, tr buff, f sli med xln, blkly flky ang gran, calc xln fill, foss frags, tr ool, chrt wht shrp frsh opa

lst wht off wht crm f sli med xln gran sub chlky to chlky, foss frags, foss ool, crsly in prt, calc xln fill, tr chrt wht shrp frsh opa

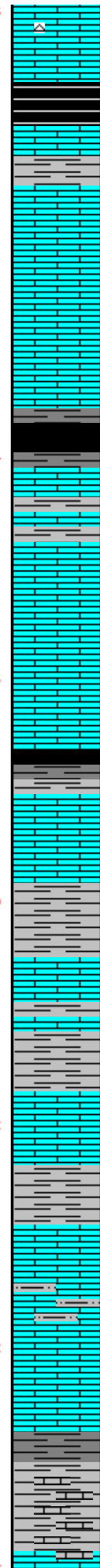
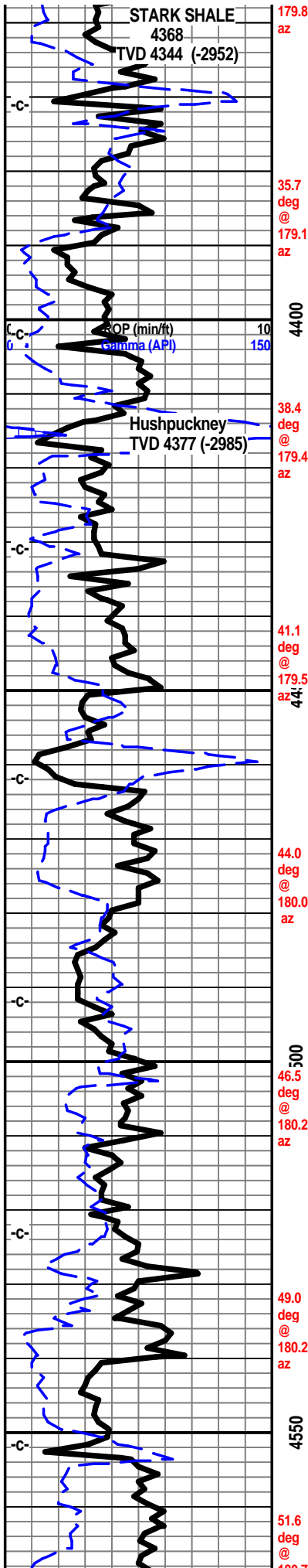
lst wht off wht crm some tan f sli med xln gran

wt. 9.0 vis. 46

7am 4240'
Sunday
Mar. 31, 2013
Easter Sunday

Mud-Co. 4293'
wt. 9.0 vis. 46
wl. 6.4 chl. 2,000

wt. 9.1 vis. 46



flky sub chiky to chiky, calc xin fill, foss frags, foss ool, chrt wht shrp frsh opa

lst wht off wht crm, f sli med xin gran flky sub chiky to chiky calc xin fill, foss frags, foss ool, mucho blk carb shl, wxy grsy gassy pcs

lst crm off wht wht f sli med xin, flky gran blk ang pcs, sub chiky to chiky foss frags, chrt wht shrp frsh opa

shl gry drk gry blk, blk carb, wxy grsy gassy pcs, lst crm tan lt gry some lt gry brn f xin gran sub chiky foss frags, chrt wht shrp frsh opa

lst wht crm tan off wht f xin blk ang sub chiky, foss frags, calc xin fill, tr foss ool, tr chrt wht shrp frsh opa

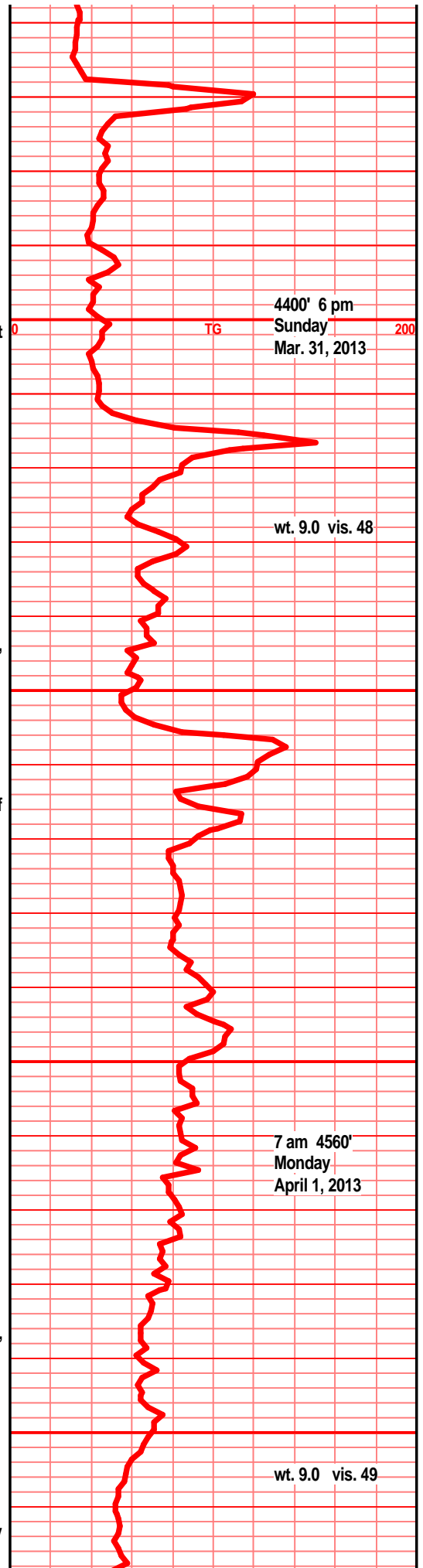
shl gry blk, tr blk carb, lst tan gry crm f some vf xin blk ang dns hrd, tr micro foss frags, tr gry tan frsh opa chrt

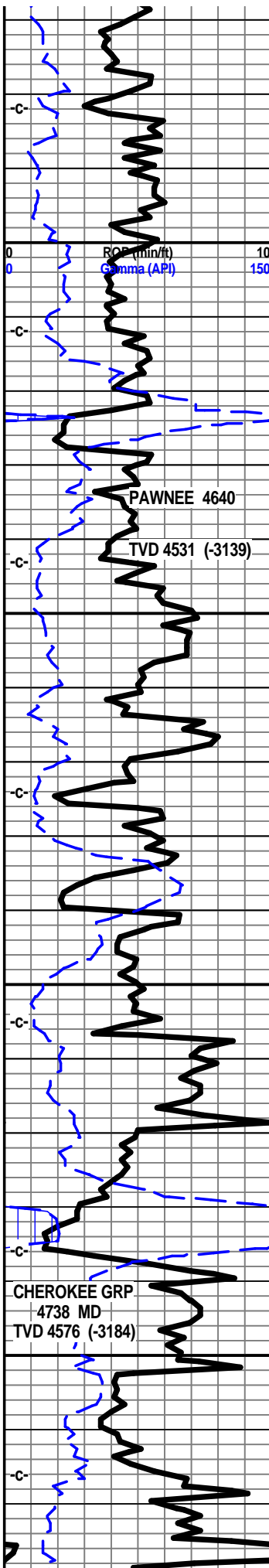
shl gry green blue/green silty gritty pyritic, shl gry brn silty gritty, lst gry tan brn f vf xin dns hrd blk ang, micro foss

lst crm tan lt gry, tr gry brn f tr vf xin dns hrd blk ang, tr micro foss, tr chrt tan brn shrp frsh opa, shl gry tan brn calc, tr foss content

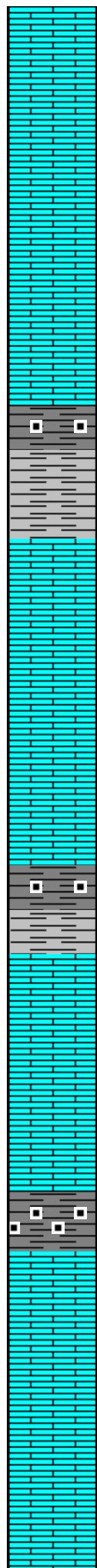
lst crm tan gry, tr gry brn, f vf xin gran arg silty, tr gritty, tr sub chiky some foss frags, tr chrt gry tan brn shrp frsh

lst gry tan brn f vf xin gran blk dns hrd arg, shls gry brn silty gritty calc, tr gry green, gritty sndy in prt





180.7 az
54.2 deg @ 180.7 az
40
57.1 deg @ 180.6 az
4650
60.5 deg @ 179.8 az
4700
66.1 deg @ 179.8 az
66.1 deg @ 179.5 az
68.7 deg @ 179.5 az
71.7 deg



lst crm buff, f vf xln blk ang flky, sub chlky in prt, tr micro foss, tr calc xln fill,

lst crm buff tan f vf lxn blk ang dns hrd, tr micro foss frags, calc xln fill, tr sub chlky, micro foss frags is prt

shl gry drk gry blk, shl blk carg, wxy grsy tr gassy pcs, lst dull tan gry f vf lxn dns hrd arg, silty, gran, tr foss frags

lst crm gry tan tr tan lt brn/gry f vf lxn dns hrd blk ang arg, tr silty, tr micro foss frags, shls gry, drk gry/brn silty calc

lst crm wht buff, f vf lxn dns hrd blk ang pcs, some sli sub chlky, micro foss frags, tr calc xln fill,

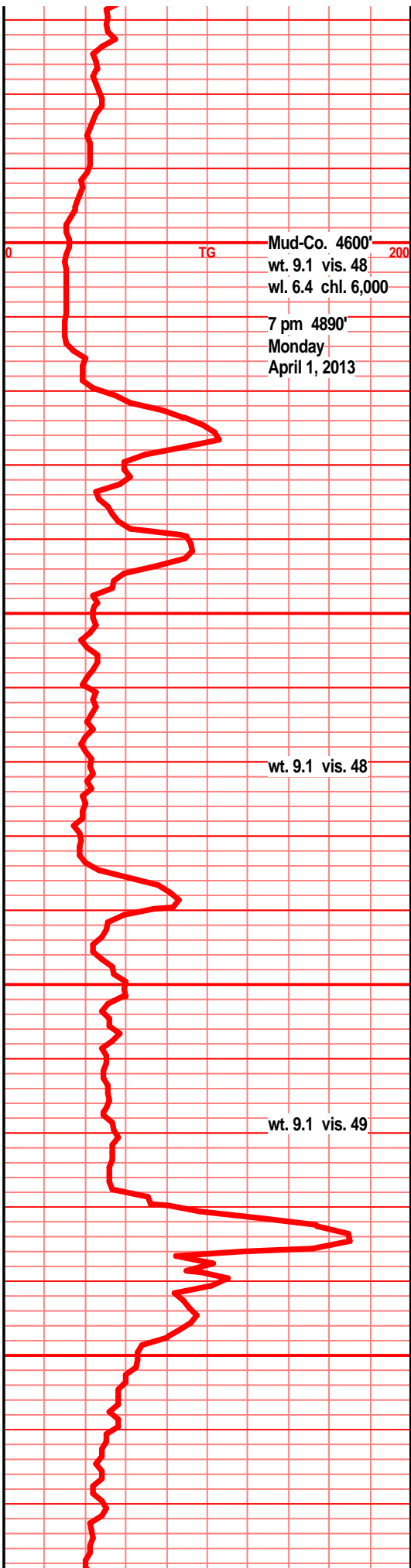
shl gry blk, blk carb flks, grsy wxy pce, shl drk gry brn silty gritty, lst tan buff off wht f vflxn dns hrd ang blk, tr calc xln fill, some micro foss

lst crm buff tan off wht f vf lxn blk dns ang hrd, flky, tr sub chlky, tr micro foss frags,

shl gry drk gry brn, drk gry blk, carb, wxy grsy tr gassy pcs, lst tan crm off wht f lxn blk ang tr flky pcs, tr micro foss frags,

lst crm buff tan off wth f vf lxn blk ang hrd dns pcs, sub chlky in prt, micro foss frags,

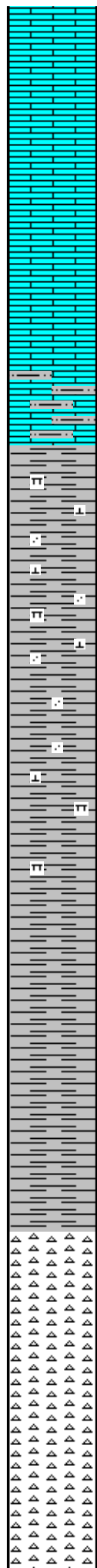
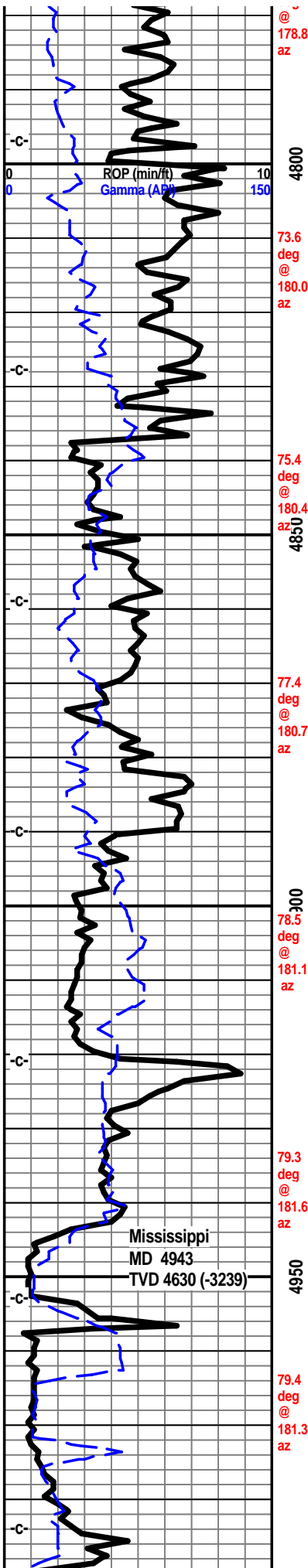
lst off wht crm tan, tr tan brn f vf lxn dns hrd blk ang, micro foss frags, tr sub chlky, tr calc



Mud-Co. 4600'
wt. 9.1 vis. 48
wl. 6.4 chl. 6,000
7 pm 4890'
Monday
April 1, 2013

wt. 9.1 vis. 48

wt. 9.1 vis. 49



xln fill, shl gry drk gry brn silty calc

lst crm buff tan tr lt gry f vf xln dns blk ang hrd, micro foss, sndy gritty in prt, shls gry, drk gry brn silty calc silty,

lst crm tan buff, gry brn f vf xln dns hrd blk ang flky, tr sub chlky, micro foss, calc fill, gritty sndy text in prt, shls gry, gry brn silty gritty sndy

shl gry green, gry brn reddish, blue gry, tr maroon yellow to vari color, silty gritty, with snd grn inclusions

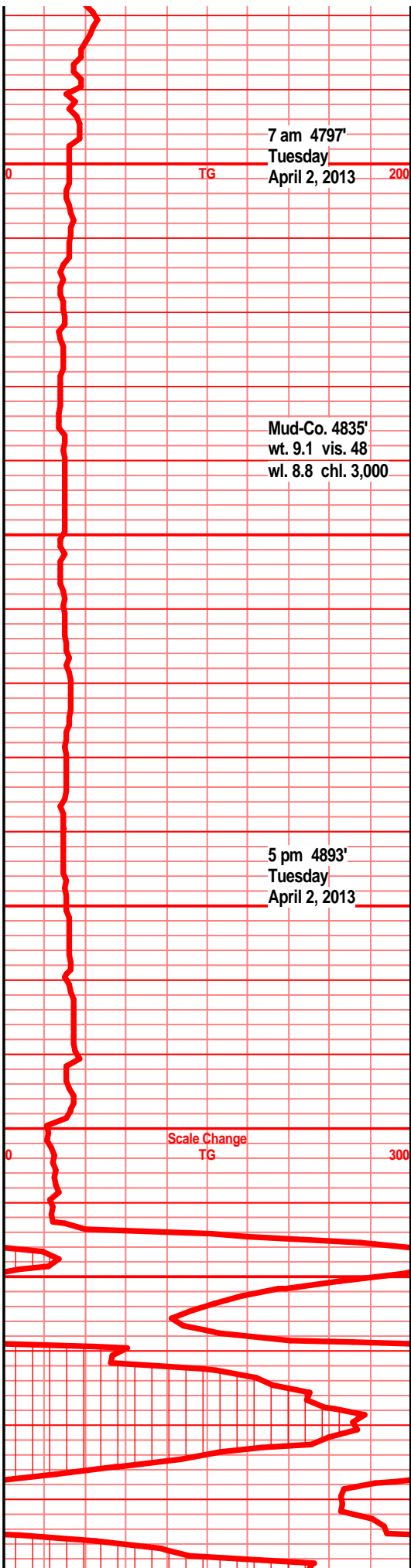
shl gry drk gry, green gry green blue maroon, yellow, vari color, silty gritty, calc in prt, snd grn inclu in some ratty splintery in prt

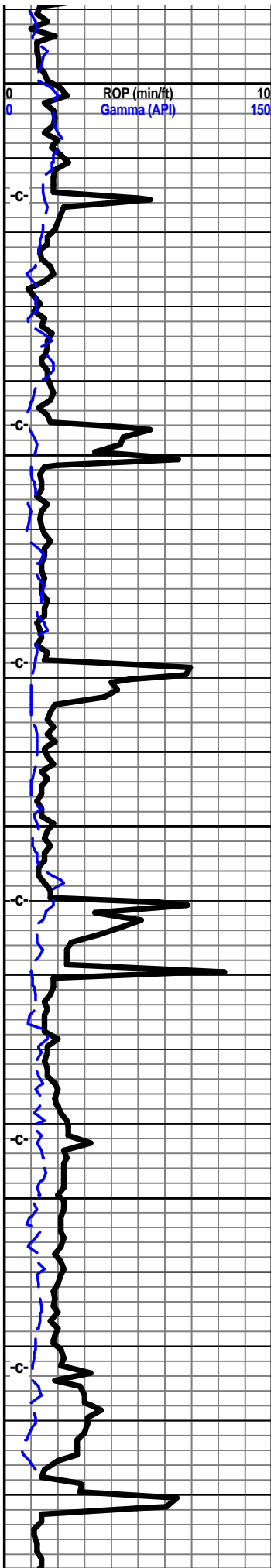
shl gry green, blue green, maroon, yellow, yellow blk, sndy gritty, ratty, splintery,

shl gry green, blue grey green, maroon, yellow, red, silty gritty vari color, sndy, snd grn iclu, ratty, splintery

chrt wht, off wht, clr, smokey, shrp frsh opa, shrp blk ang pcs, tr weath text edges, tr gas bubs, tr drk hvy stain, sli odor ? mostly frsh shrp ang pcs

chrt off wht lt gry smokey, blue/gry shrp frsh opa, semi transl, tr clr, tr weath gran edges, pp moldic por on sli weath edge, tr hvy blk stain vssgas bubs, tr hvy stain, odor?





79.6 deg @ 5 180.9 az
 80.4 deg @ 180.7 az
 80.9 deg @ 180.6 az
 81.3 deg @ 180.4 az
 87.8 deg @ 180.0 az
 84.3 deg @ 180.0 az
 86.4 deg @ 180.9 az



chrt off wht lt gry, blue gry smokey , shrp frsh opaq, semi transl, chrt tan lt brn with weath gran sli trip text edges, pp moldic por, tan brn stain, tr hvy brn stain, gas bubs, sli odor, filmy SFO on sample tray water

chrt wht off wht, lt gry, lt blue gry smokey shrp frsh opaq, chrt tan gry brn mott gran weath text edges, pp moldic por, tan brn stain, drk hvy stain, gas bubs, scat dull UY, sli odor, filmy SFO

chrt off wht lt gry, lt blue gry smokey shrp frsh opaq, blk ang, semi transl, chrt with tan brn mott, weath gran edge text, pp moldic por, sli odor, tan brn stain, SSFO, filmy SFO, scatt dull UV

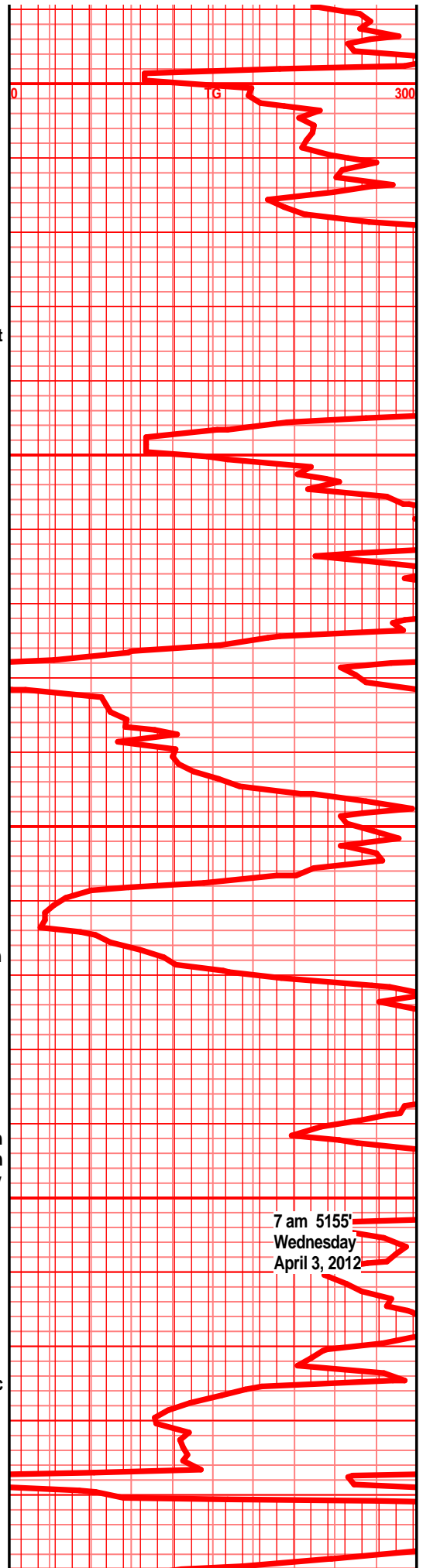
chrt off wht lt gry, gry/smokey, shrp frsh opaq semi transl, tan brn mott, weath gran sli trip text, tan brn edge stain, VSSFO, sli odor, dull UV, filmy SFO on spl water

chrt off wht lt gry, clr, lt gry tr gry smokey shrp frsh opaq, semi transl, tan brn mott with weath gran sli trip text edges/sides, tan brn stain, VSSFO, stain, tr gas bubs, scat dull UV

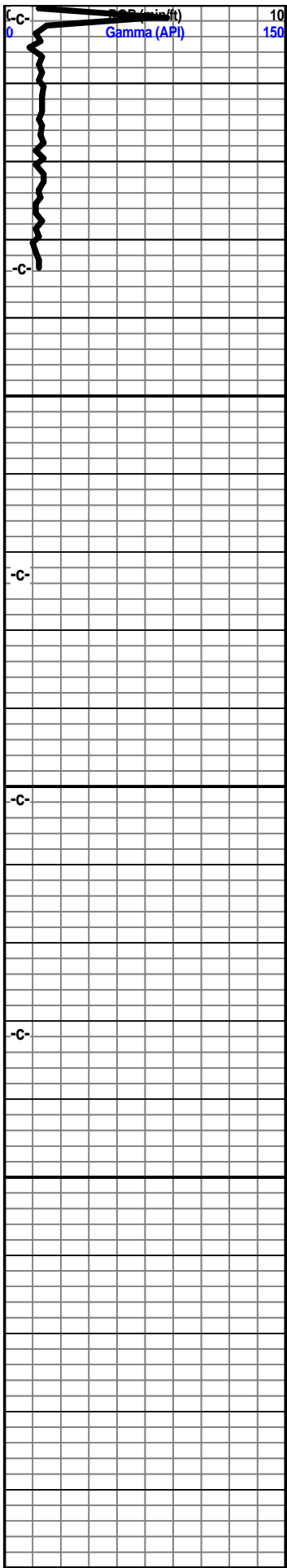
chrt off wht lt gry frsh shrp blk ang with weath sli trip gran edges/sides, some spongy text, tan brn pp and moldic por with tan brn stain, tr hvy blk stain, sli odor, gas bubs, scat dull UV

chrt wht off wht, lt gry, tr smokey opaq semi transl, incr spongy text, sli gran chlky, chrt tan lt brn mott, weath gran sli trip edges, pp moldic por, tan lt brn stain, sli odor, sli gas bub, dull scatt UV, tr hvy blk stain

chrt wht off wht. some lt arv smokev with frsh



7 am 5155'
 Wednesday
 April 3, 2012



52
 5250
 5300
 5350
 00

shrp opaq semi trans text, chrt tan lt brn brn
 mott weath gran sli spongy slt trip text, pp
 moldic por, tan brn stain, SSFO, sli odor, tr hv
 blk stain dull scatt UV

chrt wht off wht, some gry smokey, with shrp
 frsh opaq semi transl text, chrt tan wht brn
 mott, weath gran sli spongy text, pp moldic
 por, tan brn stain sli odor, gas bubs

