

Woolsey Operating Company, LLC

Scale 1:600 (2"=100') Metric
Measured Depth Log

Well Name: Lincoln Trust #2 H
Location: Section 14 - Township 34 South - Range 11 West
License Number: 15-007-23998-01-00 Region: Barber County, KS
Spud Date: March 21, 2013 Drilling Completed: April 13, 2013
Surface Coordinates: Approx. S1/2 - N1/2 - NE - SE
2305' FSL and 660' FEL
Bottom Hole
Coordinates:
Ground Elevation (m): 1375' K.B. Elevation (m): 1392'
Logged Interval (m): 3800' To: 8958' Total Depth (m): 8958'
Formation: Heebner -----> Mississippian
Type of Drilling Fluid: Chemical mud, Water/FloZan
Printed by WellSight Log Viewer from WellSight Systems 1-800-447-1534 www.WellSight.com

OPERATOR

Company: Woolsey Operating Company, LLC
Address: 125 N. Market Suite 1000
Wichita, Kansas 67202

GEOLOGIST

Name: Bill Klaver
Company: Woolsey Operating Company, LLC
Address: 125 N. Market Suite 1000
Wichita, Kansas 67202









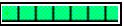









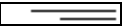

Comments

Gas Detector: Woolsey Operating Co. Gas Trailer #2
Mud System/Material: Mud Co. Brad Bortz, Terry Ison, Mud Engineers
Directional Systems: Calmena, Heath Marshall, Mark Sanders, Directional Drillers.
MWD Hands: Shane Lewis, David Jay

Crew Info

Tool Pusher Steve Ellington, Sammy Fry Relief Pusher
12 hour/7 day Tours: Daylights: Johnnie Stone, Jack Lambert
Evenings: Tanner Barber, Terry Stark
Dan D Bit Record:
1) 17 1/2" Reed RR-RT out at 335', 2) 12 1/2" Reed RR-RT out at 771', 3) 8 3/4" RTC R-25-APDH out at 3996', 4)
8 3/4" RTC R-25AP out at 5234', 5-8) 6 1/8" RTC R-50 PDH.

ROCK TYPES

	Anhy		Clyst		Gyp		Mrlst		Shgy
	Bent		Coal		Igne		Salt		Sltst
	Brec		Congl		Lmst		Shale		Ss
	Cht		Dol		Meta		Shcol		Till

ACCESSORIES

MINERAL

Anhy
 Arggrn
 Arg
 Bent
 Bit
 Brecfrag
 Calc
 Carb
 Chtdk
 Chtlt
 Dol
 Feldspar
 Ferrpel
 Ferr
 Glau

Gyp
 Hvymin
 Kaol
 Marl
 Minxl
 Nodule
 Phos
 Pyr
 Salt
 Sandy
 Silt
 Sil
 Sulphur
 Tuff

FOSSIL

Algae
 Amph
 Belm
 Bioclst
 Brach
 Bryozoa
 Cephal
 Coral
 Crin
 Echin
 Fish
 Foram
 Fossil
 Gastro
 Oolite

Ostra
 Pelec
 Pellet
 Pisolite
 Plant
 Strom

STRINGER

Anhy
 Arg
 Bent
 Coal
 Dol
 Gyp
 Ls
 Mrst

Sltstrg
 Ssstrg

TEXTURE

Boundst
 Chalky
 Cryxln
 Earthy
 Finexln
 Grainst
 Lithogr
 Microxln
 Mudst
 Packst
 Wackest

OTHER SYMBOLS

POROSITY

Earthy
 Fenest
 Fracture
 Inter
 Moldic
 Organic
 Pinpoint

Vuggy

SORTING

Well
 Moderate
 Poor

ROUNDING

Rounded
 Subrnd
 Subang
 Angular

OIL SHOW

Even

Spotted
 Ques
 Dead

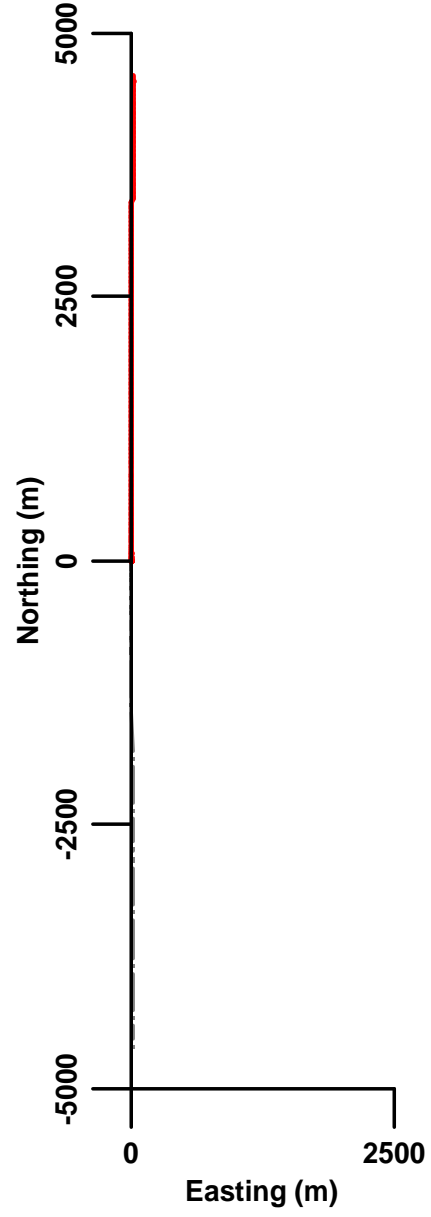
INTERVAL

Core
 Dst

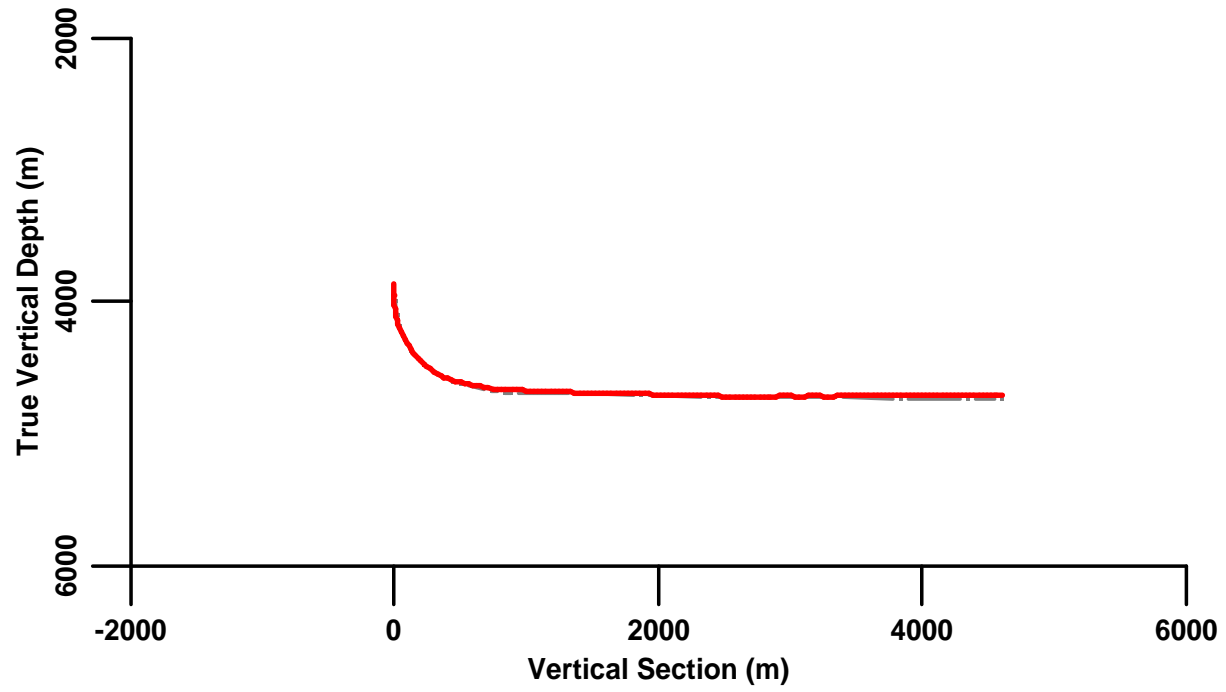
EVENT

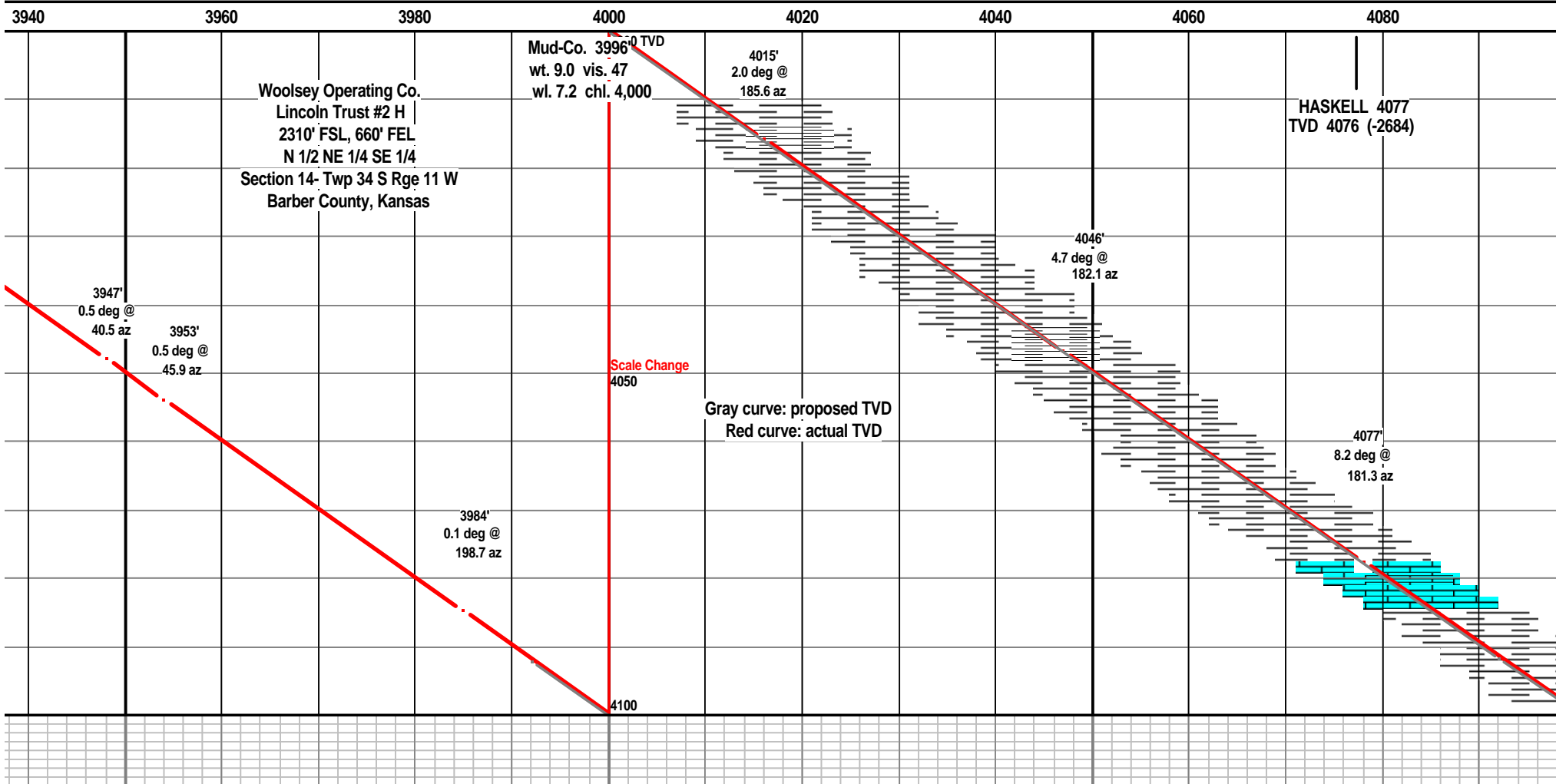
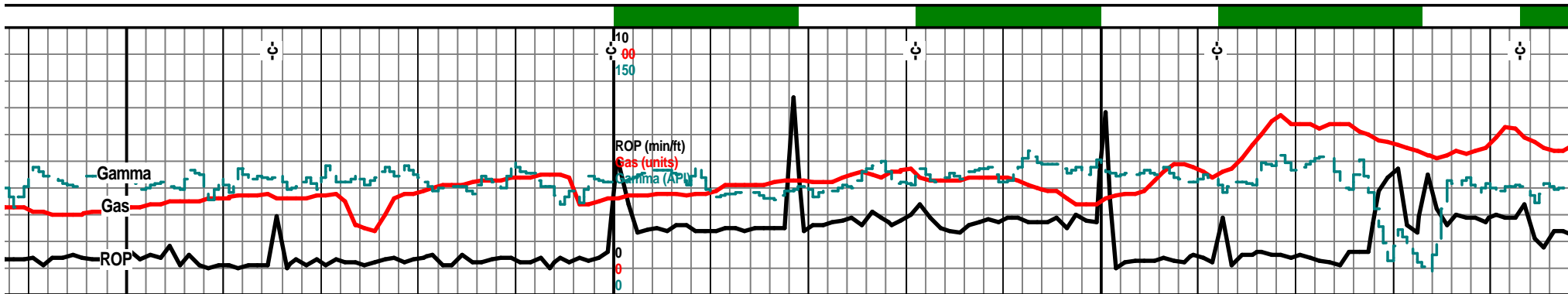
Rft
 Sidewall

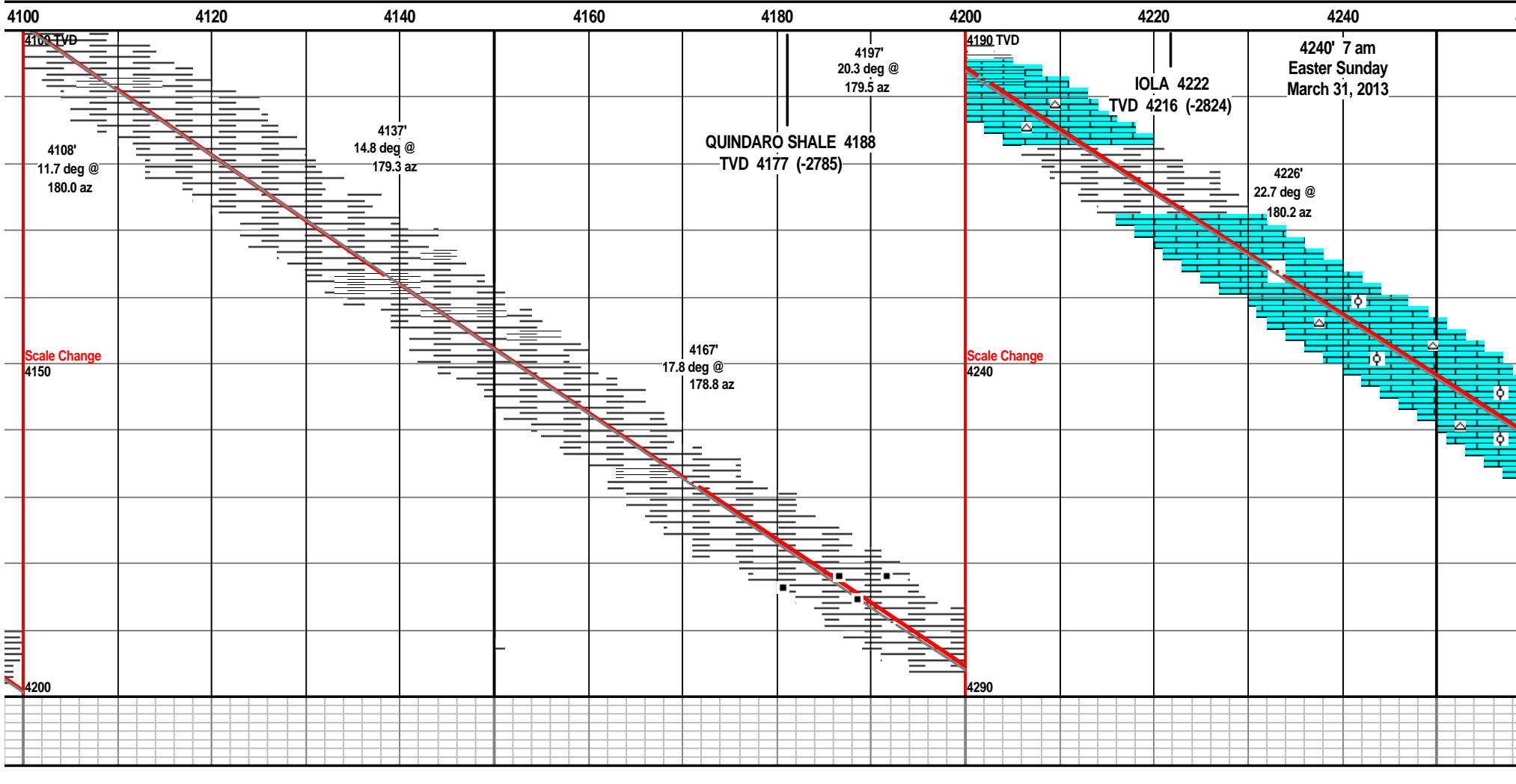
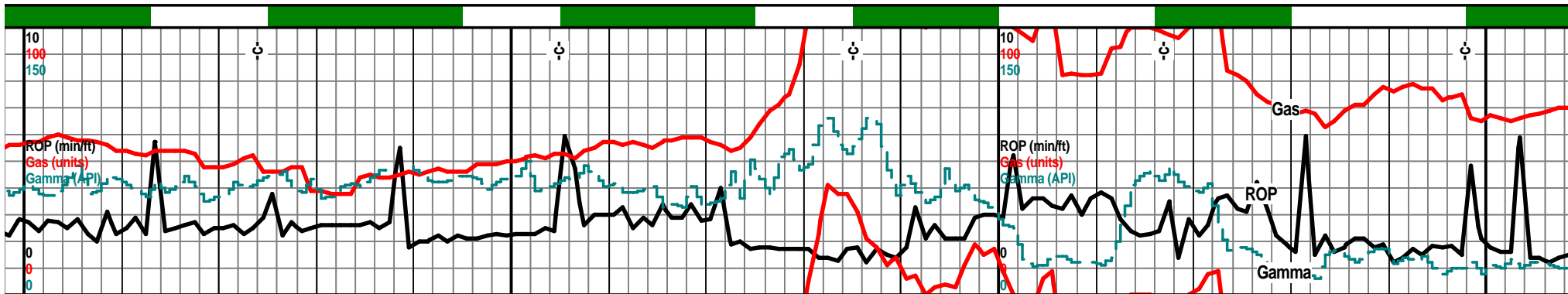
Plan

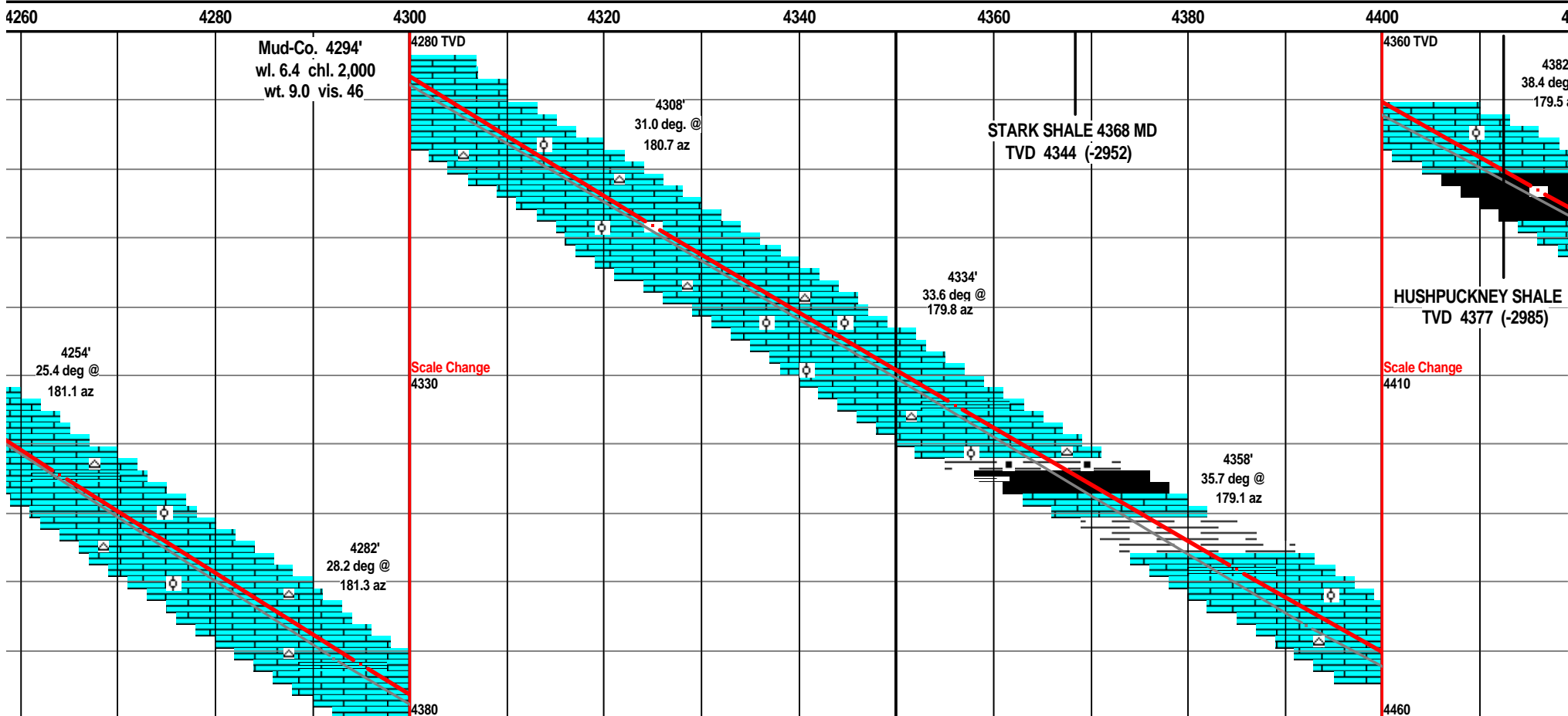
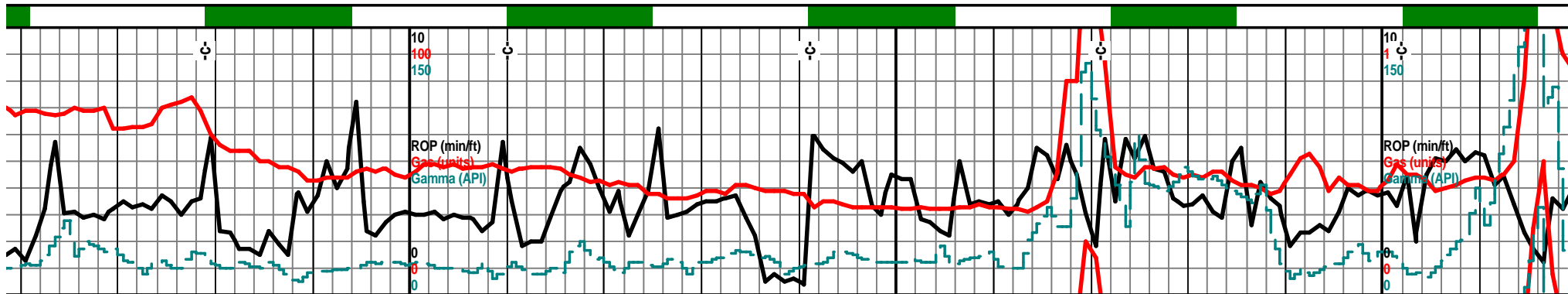


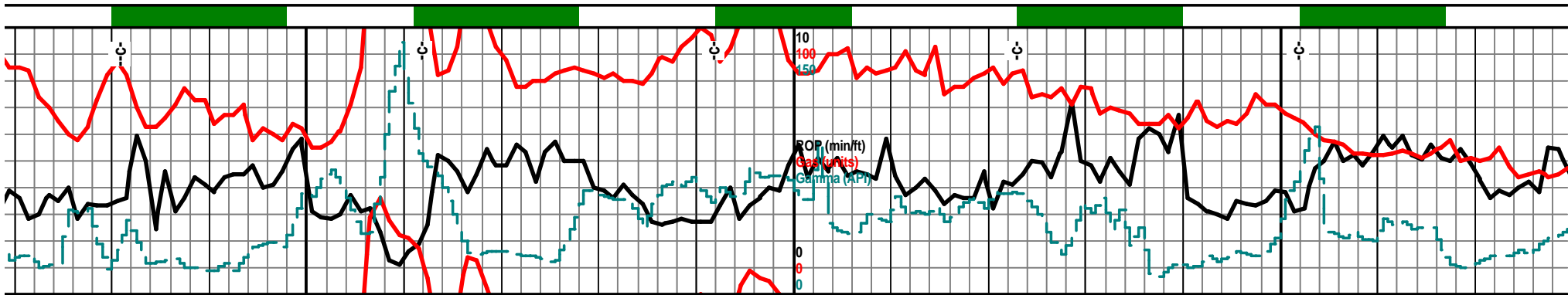
Elevation



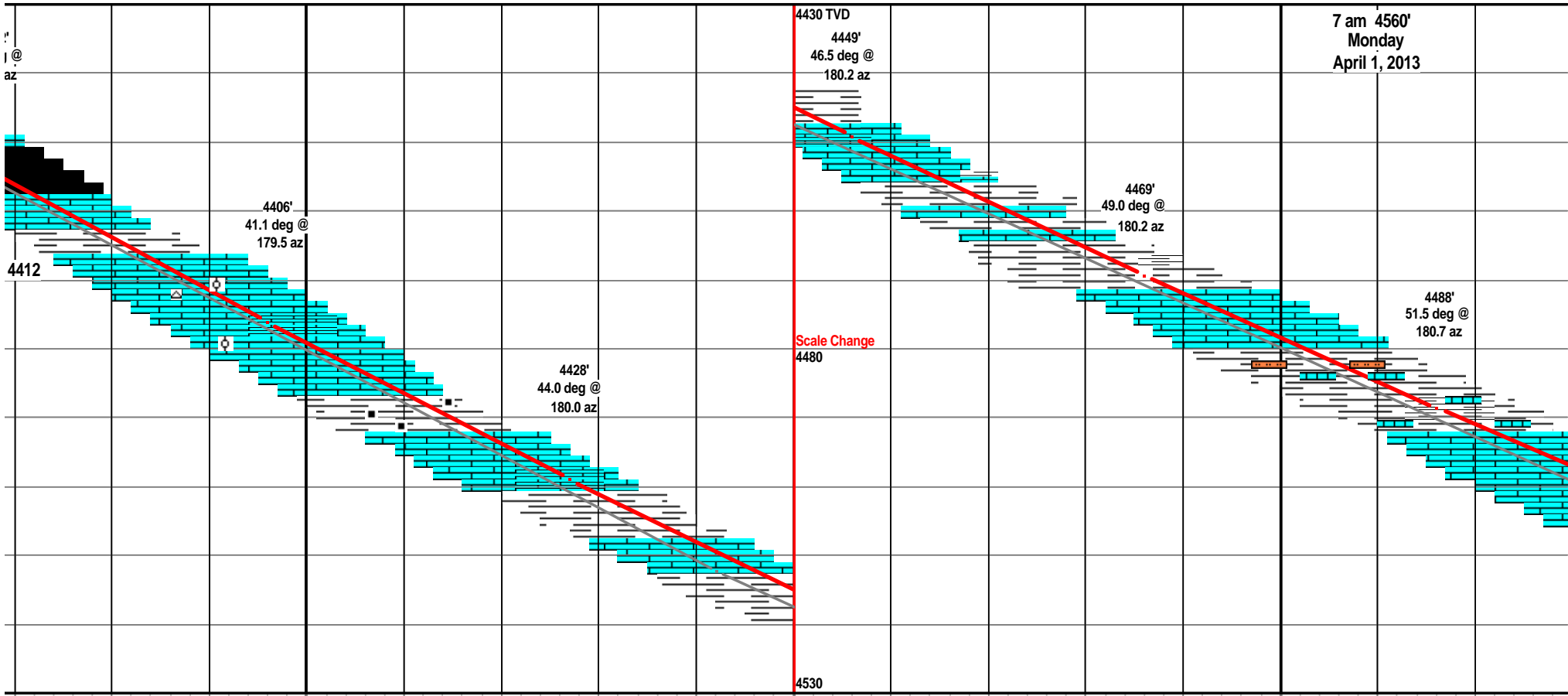


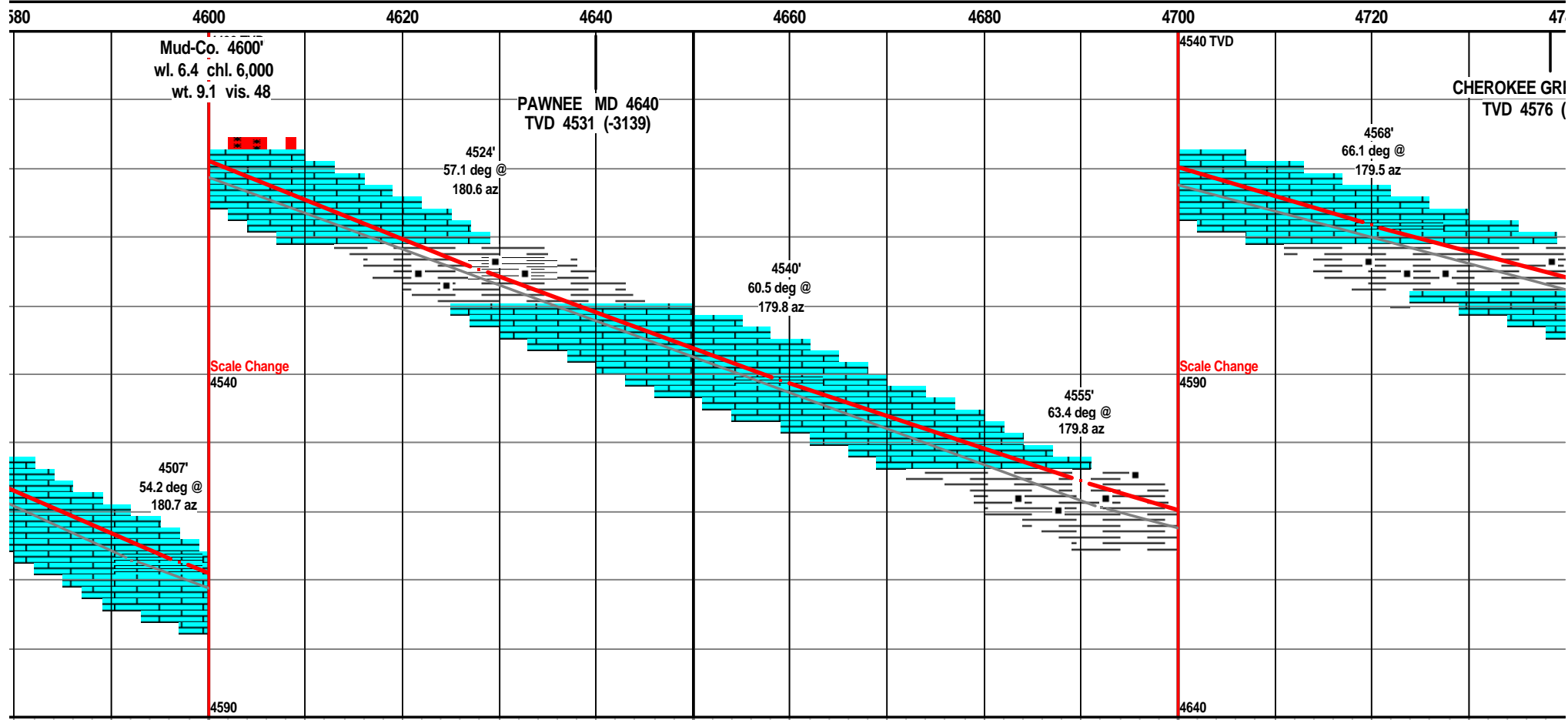
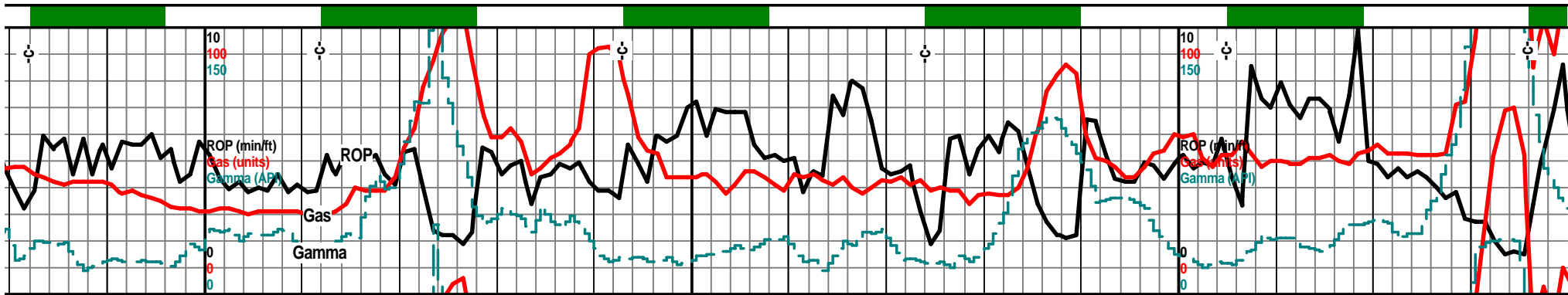


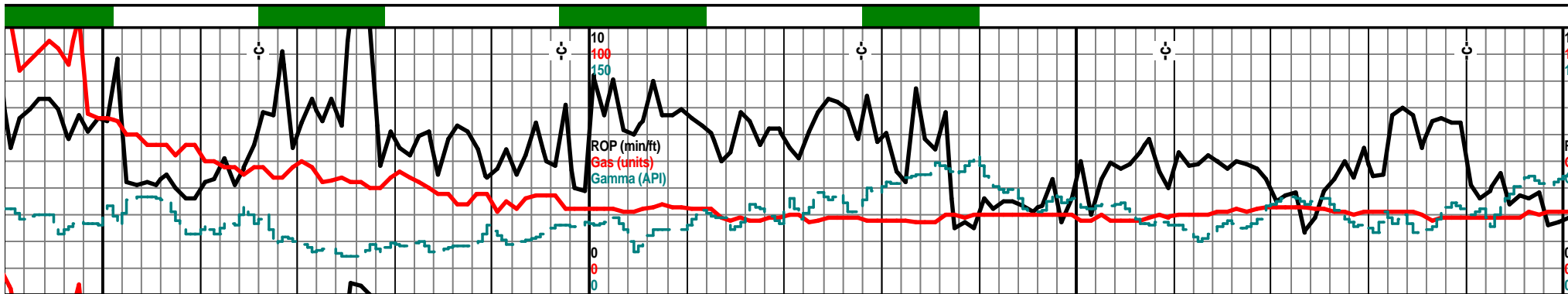




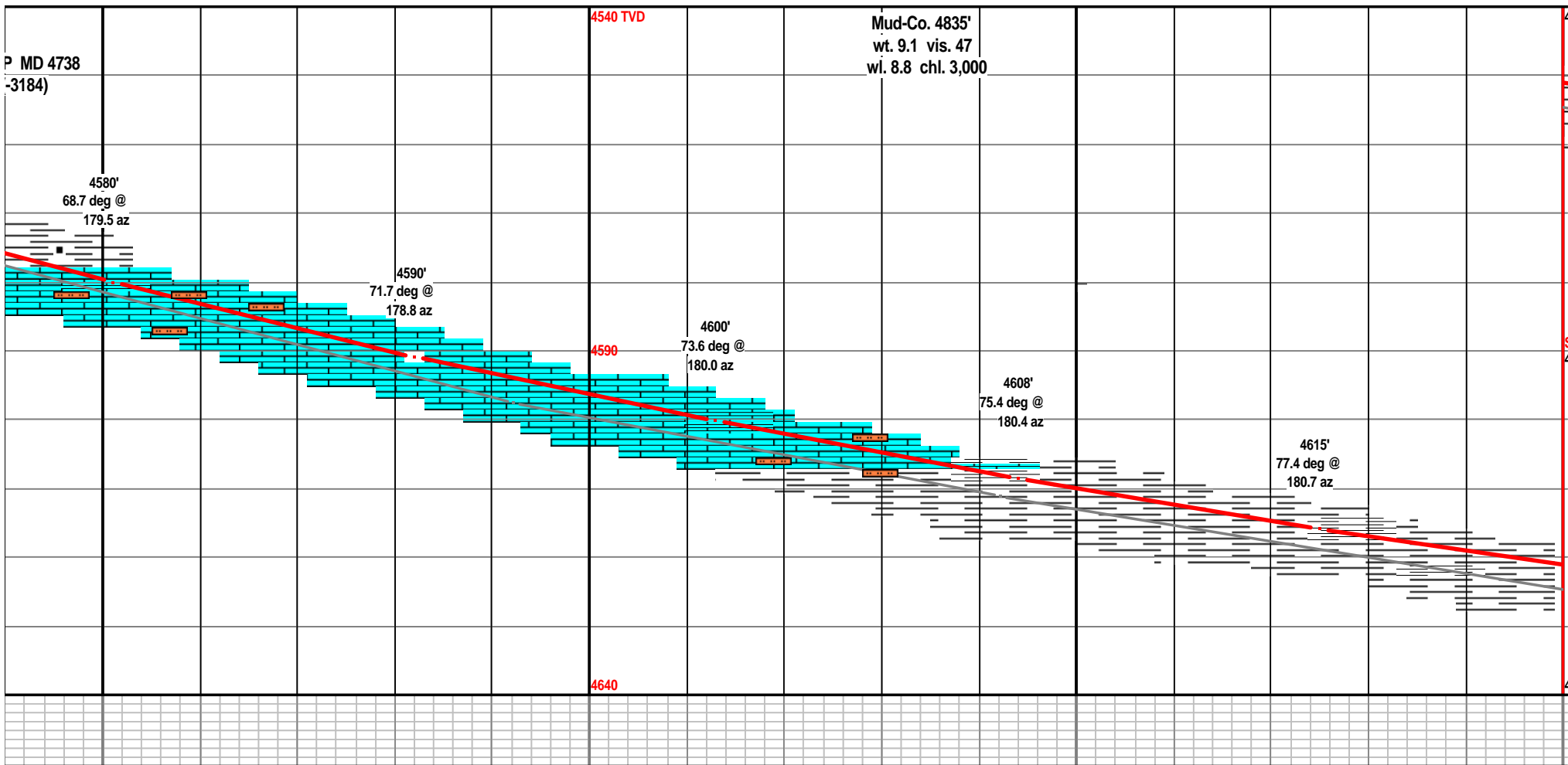
420 440 4460 4480 4500 4520 4540 4560 4580

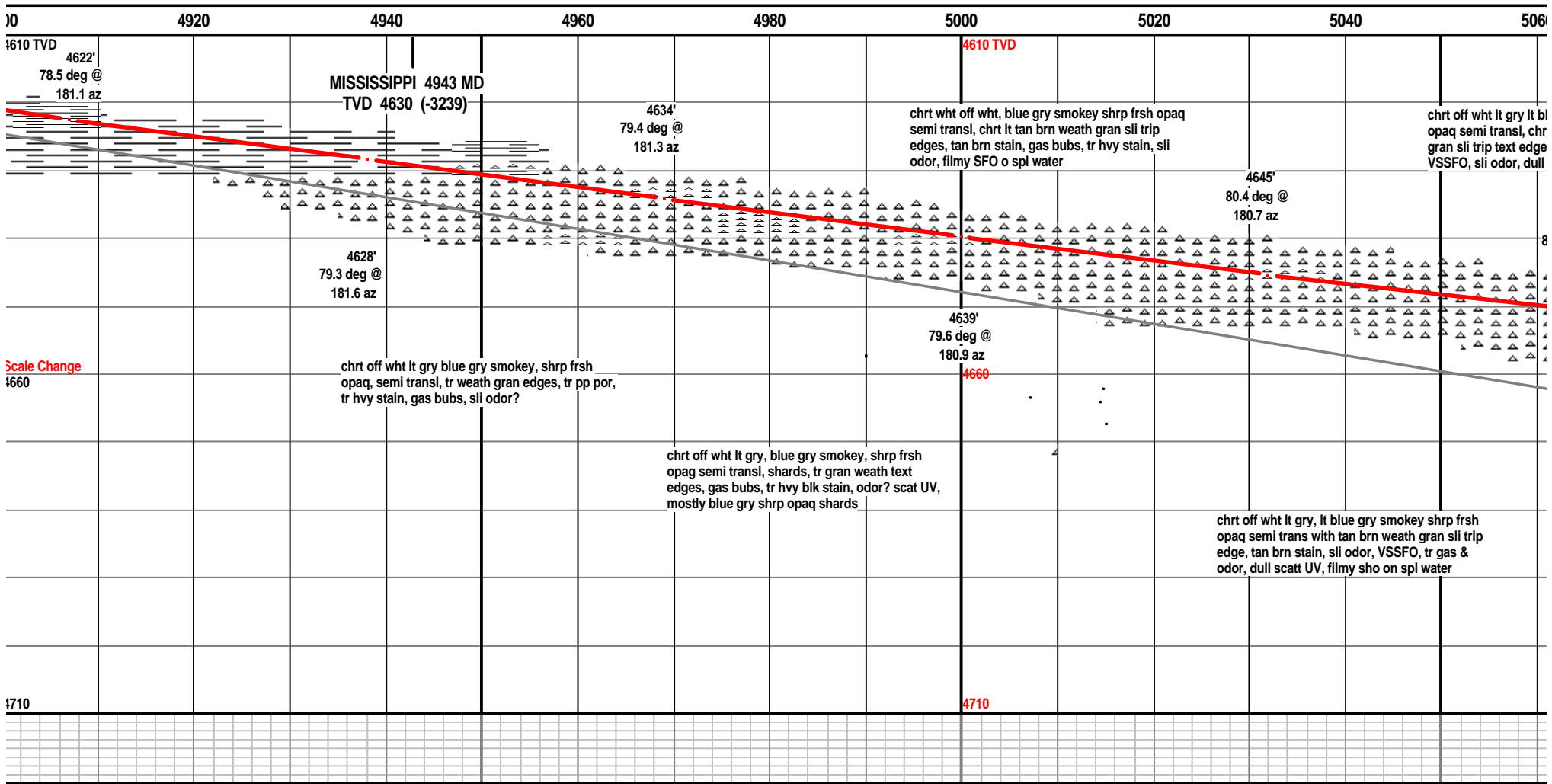
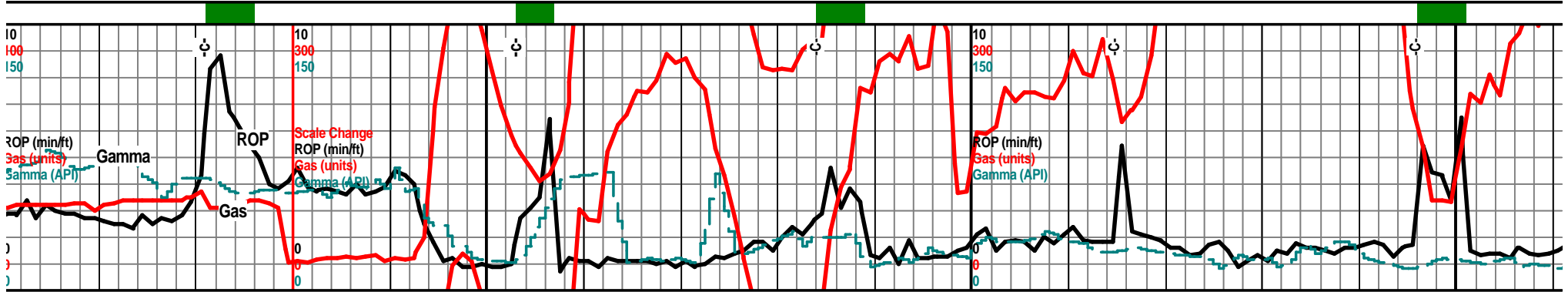


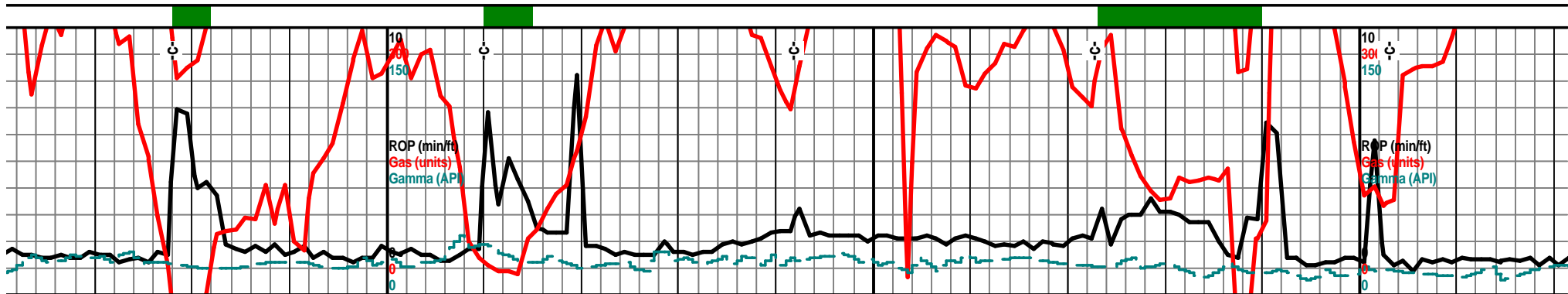




40 4760 4780 4800 4820 4840 4860 4880 4900

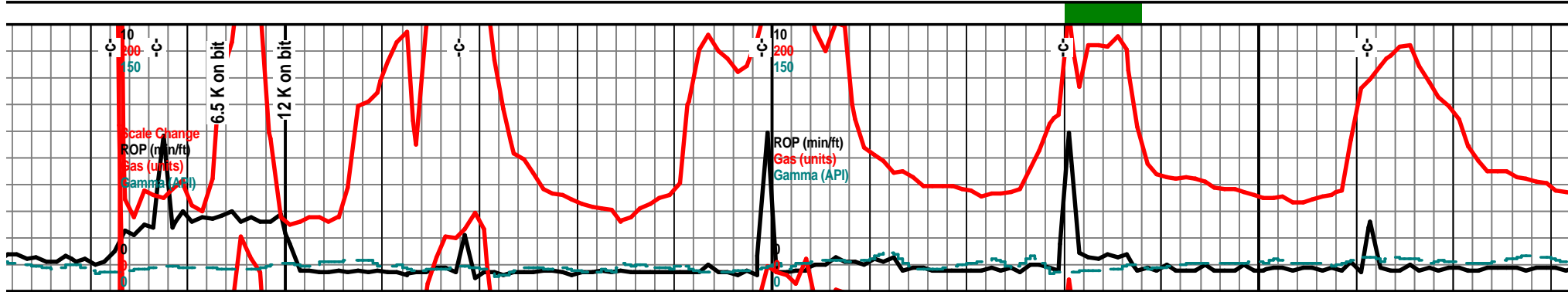




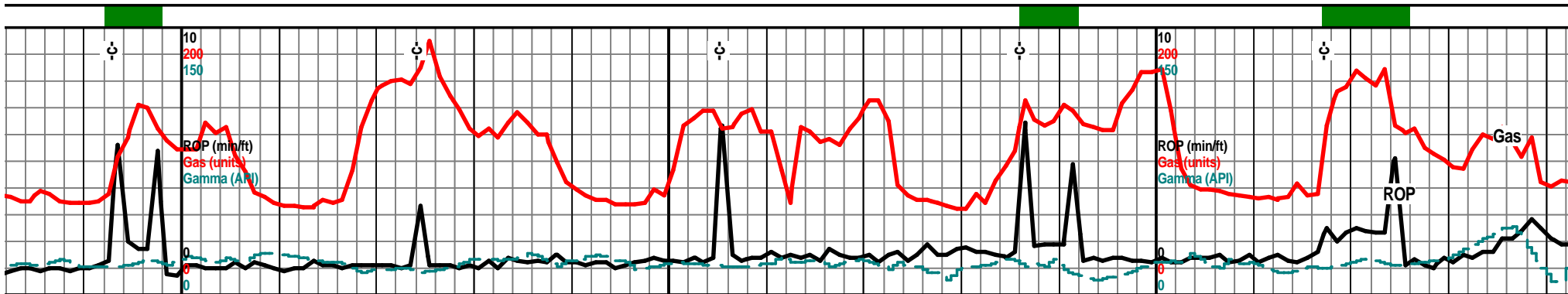


0 5080 5100 5120 5140 5160 5180 5200 5220

		4610 TVD			7 am 5155' Wednesday April, 3, 2013			4630 TVD	
lue gry smokey shrp frsh t wht tan brn mott, weath s, pp moldic por, filmy SFO, scatt UV		chrt off wht lt gry smokey, shrp frsh opa, semi transl, chrt tan brn drk brn mott weath gran sli trip text edges/sides, pp moldic por, VSSFO, tr hvy stain, sli odor, tr gas bubs,		chrt off wht lt gry, tan lt brn brn mott shrp frsh opaq blkly ang pcs with weath sli trip text edges, pp moldic por, tan brn stain, gas bubs, VSSFO, sli odor, scatt dull UV.		chrt off wht lt gry tr lt gry smokey with shrp frsh opaq semi transl text, chrt tan wht brn mott, gran spongy sli trip text, pp moldic por, tan brn stain tr hvy blk stain, sli odor, gas bubs, dull UV.			
4650' 10.9 deg @ 180.6 az		4655' 81.3 deg @ 180.4 az		4659' 82.8 deg @ 180.0 az		4663' 84.3 deg @ 180.0 az		4665' 86.8 deg @ 180.9 az	
								Scale Change 4680	
chrt off wht lt gry, lt gry smokey, shrp frsh opa, semi transl, chrt tan brn mott, weath gran sli trip edges, pp moldic por, tan brn stain, VSSFO, filmy SFO, sli odor, dull scatt UV, tr gas bubs		chrt off wht wht, lt gry, shrp frsh opa sub transl, chrt wht tan lt brn mott, weath gran sli trip text edges/sides, pp moldic por, tan brn stain, tr hvy blk stain, VSSFO, gas bubs. sli odor, scatt UV		chrt off wht lt gry shrp frsh opa semi transl, chrt off wht wht with tan brn weath gran sli trip text, tr spongy text, tan brn stain, VSSFO, sli odor, gas bubs, scatt dull UV.		chrt off wth tan, tan brn wht mott, weath sli spongy text sli trip edges/faces, pp moldic por, tan brn stain, SSFO, gas bubs, dull scatt UV.			
		4710						4730	



5240	5260	5280	5300	5320	5340	5360	5380
7" Casing Point 5234' New Gas Filament 5234'			4630 TVD				
Drill plug 8 am April 5, 2013	chrt wth off wht lt gry, tr clr lt gry, sharp frsh opaq blky shards, semi transl with weath gran sli trip text, tr spongy text tan brn stain, tan brn SFO, sli odor, gas bubs, filmy SFO, dull scatt UV		chrt wth clr lt gry, tr lt gry smokey shrp frsh opaq semi transl, chrt wth tan lt brn mott, weath gran sli trip spongy text, pp moldic por, tan brn stain, SSFO, free oil on spl water, sli odor, filmy SFO, dull scatt UV			chrt wth off wht lt gry lt gry smokey, shrp frsh blky ang opaq shards, semi transl with weath edges, chrt wth tan brn/blk weath gran spongy sli trip text, pp moldic por, tan brn some blk stain, tr hv blk stain, SFO, loose floatng drops, abun gas bubs, fair even dull UV, odor	
4669' 88.7 deg @ 181.1 az		4668' 89.2 deg @ 180.6 az	4680	4669' 89.3 deg @ 180.4 az	4669' 87.6 deg @ 180.7 az	4671' 88.1 deg @ 181.4 az	
chrt wth off wth lt gry smokey shrp frsh semi opaq, with weath gran sli spongy text, pp moldic por, sli odor, tan brn stain, tr hvy stain, sull scatt UV, poor sample, mucho nut plug!		chrt off wht lt gry tr lt smokey shrp frsh opaq semt transl, weath gran sli spongy sli trip text edges, pp moldic por, tan brn stain, SSFO, gas bubs, tr hvy blk stain, sli odor, dull scat UV		chrt wth lt gry lt gry smokey shrp frsh opaq, blky ang shards, semi transl, chrt tan blk brn mott, spongy weath sli trip text, pp moldic por, tan brn stain, tr hvy blk stain, SFO, fair gas bub, floating oil droplets, sli odor, scatt dull UV		chrt i shrp brn s stain SFO, UV	
			4730				



5400 5420 5440 5460 5480 5500 5520 5540

4630 TVD

chrt wht off wht lt gry, some smokey gry, shrp frsh opa q sub mini transl, blk ang shards, with chrt wht lt gry with tan brn weath sli gran/spongy sli trip text, tan brn some blk stain, tr hvy blk stain, filmy SFO, SSFO, sli odor increasing, "floating droplets", dull scat UV, less frsh incr weath text & show

chrt wht off wht lt gry tr lt gry smokey, shrp frsh opa q, semi transl, blk ang shards with weath tan tr blk mott weath sli gran weath edges, tr spongy text, gd pp moldic vug por, tan brn blk stain, tr hvy blk stain, fair odor, abun gas bubs, scatt dull UV, floaters

chrt wht clr off wht lt gry opa q, blk ang shards, cr gran spongy sli trip text, blk stain, SSFO, gas but wht lt green chrt dolo k with weath chrt with tan



4680 4671' 88.9 deg @ 181.4 az

4672' 89.2 deg @ 181.8 az

4672' 89.7 deg @ 181.4 az

4672' 89.9 deg @ 190.9 az

4673' 88.1 deg @ 179.7 az

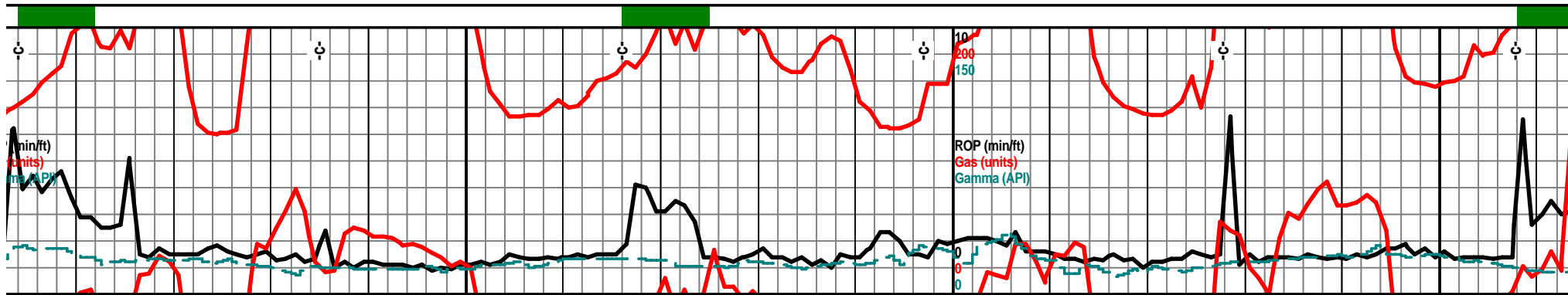
incr frsh, wht off wht lt gry, lt smokey gry, frsh opa q semi transl shards, with weath tan sli spongy sli trip edge/sides, tan brn tr blk pp moldic por, vug por, sli odor, filmy SFO, floating oil droplets on spl water, scatt dull

chrt wht off wht lt gry tr lt gry smokey, shrp frsh opa q, semi transl, blk ang shards, with weath tan brn tr blk mott weath sli gran some spongy text edges/sides, gd pp moldic por, tan brn blk try hvy blk stain, fair odor, gas bubs, scatt dull UV, floating oil drops/spl tray

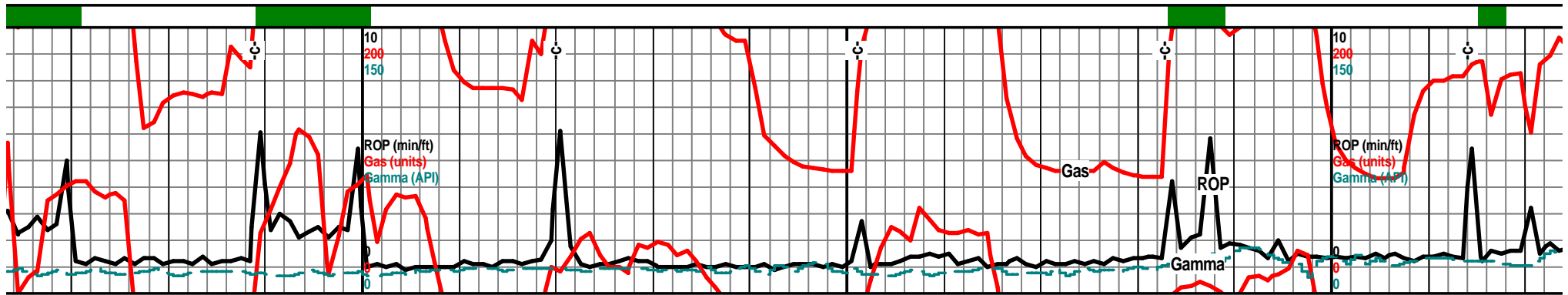
chrt clr off wht lt gry, transl, lt smokey gry shrp frsh blk ang shards, semi transp, chrt off wht lt gry with weath gran sli trip text edges, tan brn tr blk stain, pp moldic por, vug por, odor, SSFO, gas bubs, "floaters" free oil in tray

4730

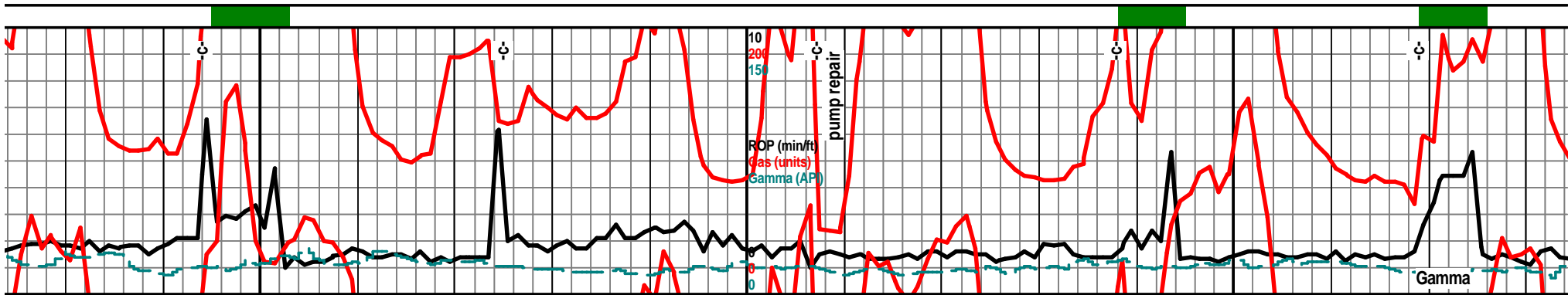
4730



5720	5740	5760	5780	5800	5820	5840	5860
<p>chrt off wht lt gry, lt smokey gry, incr frsh/less weath text, shrp frsh opa, transp in prt, mstly semi transl, blk ang shards, with tan off wht lt brn chrt, weath gran sli spongy sli trip text, gd pp moldic por, tan brn stain, tr hvy blk stain, SSFO, gas bubs, sli odor, floaters</p>				<p>chrt off wht wht lt gry lt smokey gry shrp frsh opa, transl blk ang shards with weath gran sli trip text edges, tan brn stained color, gd pp moldic por, tan brn stain tr blk stain, sli odor, filmy SFO, SSFO, scatt dullUV, tr glau</p>		<p>chrt off wht lt gry lt smokey gry shrp frsh opa, transl, some transp, blk ang shards, with tan brn colored weath gran sli trip stain, sli spongy in prt, gd pp moldic por, vug por, sli odor, tan brn stain tr blk hvy stain, SSFO, floating drops, scatt dull UV, incr frsh less show this sample?</p>	
<p>4683' 87.7 deg @ 178.6 az</p>				<p>4684' 87.9 deg @ 179.3 az</p>		<p>4685' 87.9 deg @ 179.7 az</p>	
<p>1 opa, xff wht lt p text, y blk UV,</p>				<p>chrt off wht, lt gry, lt smokey gry, shrp frsh opa, semi transl, blk ang shards, with off wht tan brn mott chrt, weath gran sli spongy trip text, gd pp moldic por, vug por, tan brn stain, tr hvy blk stain, SSFO, sli odor, gas bubs, floaters, scatt dull UV,</p>		<p>chrt wht lt gry lt smokey gry shrp frsh opa semi transl blk ang shards with tan brn weath gran trip text edges/sides, pp moldic vig por, tan brn stain colored, pp moldic por, vug por, VSSFO, gas bubs, sli odor, floating dropa scatt UV</p>	
				<p>4650 TVD</p>		<p>7am 5840' Saturday April 6, 2013</p>	
				<p>Scale Change 4700</p>		<p>4687' 87.1 deg @ 179.7 az</p>	
						<p>4688' 86.8 deg @ 179.8 az</p>	
						<p>Morning driller/Daylight driller</p>	
				<p>4750</p>		<p>Incr sta shrp frs mott, w vug por odor, g scat UV</p>	



5880	5900	5920	5940	5960	5980	6000	6020
Mud-Co. 5892' wt. 8.5 vis. 31 wl. N/C chl. 1,200		4650 TVD					4650 TVD
chrt off wht lt gry smokey gry in color, frsh shrp semi transl opaq shards with weath tan brn stained, sli trip some spongy text, gd vu pp moldic por, tan brn some blk hvy stain, sli odor gas bubs, dull scatt UV				chrt lt gry lt smokey gry transl opaq with weath gran spongy trip text edges, edges tan brn some drk brn, gd pp moldic por, vug por tan brn stain, tr blk hvy stain, fair SFO, stain, sli odor, floating drops, dull scatt UV			bec frsher..chrt wht off sharp frsh semi transp sli spongy sil trip gran e stained color edges, gd por, SFO, hvy blk SFO/s dull scatt UV
4690' 87.8 deg @ 180.6 az		4691' 89.2 deg @ 180.6 az		4691' 89.6 deg @ 180.6 az	4691' 90.3 deg @ 180.2 az	4691' 90.6 deg @ 180.6 az	4700
in and show this spl, chrt lt smokey gry th opa semi transl, chrt off wht tan lt brn weath spongy trip text, gd pp moldic por, tan brn stain, tr blk hvy stain, SFO, fair gas bubs, filmy SFO, floating Drops, dull			chrt off wht lt gry, lt smokey gry, shrp frsh opa semi transl, some transp, vit in prt, chrt tan lt brn mott, weath gran sli trip text, tr spongy text, gd vis pp moldic vug por, tan brn stain, tr hvy blk stain, SSFO, filmy SFO, gas bubs, floaters, dull scatt UV			chrt off wht lt gry lt smokey gry opa, transl with off wht tan lt brn weath gran spongy sli trip text edges, tan crm lt brn stained color, tan brn stain, tr hvy blk stain, gd vis pp moldic por, SFO, gas bubs, floaters, dull scatt UV	
	4750					4750	



6040

6060

6080

6100

6120

6140

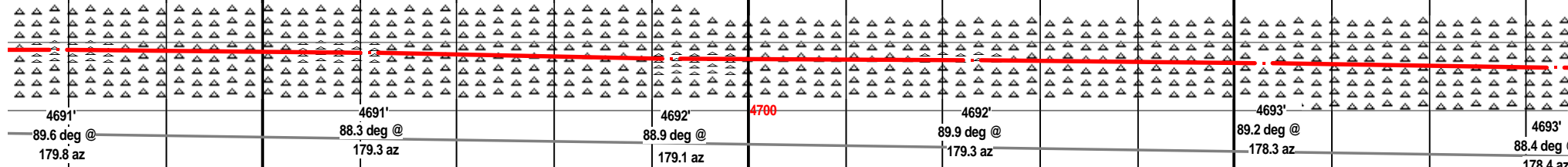
6160

6180

wht lt gry lt smokey gry, shards, with weath gran edges, crm tan lt brn pp weath vug and moldic stain, sli odor, gas bubs,

chrt off wht lt gry, lt gry smokey, shrp frsh opa, sub transl, some transl, blk ang shards, with tan crm brn weath gran spongy text edges/sides, tan lt brn stain tr hvy blk stain, fair odor, SSFO, gas bubs, scatt UV

chrt as before, vis incr in weath slt trip text with tan brn lt blk stain, chrt off wht lt gry shrp frsh opa, transl semi transp, chrt aa with tan brn stain weath sli trip some spongy text edges, pp moldic por, tan brn stain, odor, gas bubs, dull scat UV, floating oil droplets.

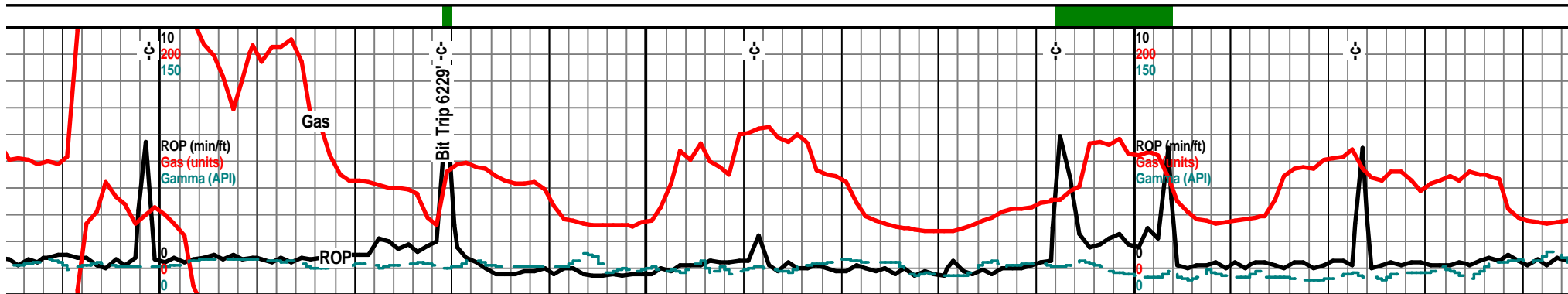


A 50-50 mix of chrt off wht lt gry, lt smokey gry shrp frsh transl, opa, vit, and chrt lt gry smokey shrp frsh with crm tan brn weath sli spongy sli trip text edges/sides, gd vis pp moldic & vug por, crm tan lt brn stained edges, tr hvy blk stain, SSFO, sli odor, gas bubs, scat UV, floating oil droplets.

increase frsh chrt, chrt lt gry lt smokey gry shrp frsh opa, transl, semi transp, blk ang shards, spl 80% this, chrt as before with sli weath, sli trip text edges, withpp moldic por, tan brn tr blk stain, tr hvy blk stain, sli odor, SSFO, dull UV

chrt lt gry lt smokey gry shrp frsh opa, tran sub transp, blk ang shrp shards with weath sli weath, sli spongy text, pp moldic por, vug tan lt brn tr blk stain color, SSFO, filmy SFO bubs, dull scat UV

4750



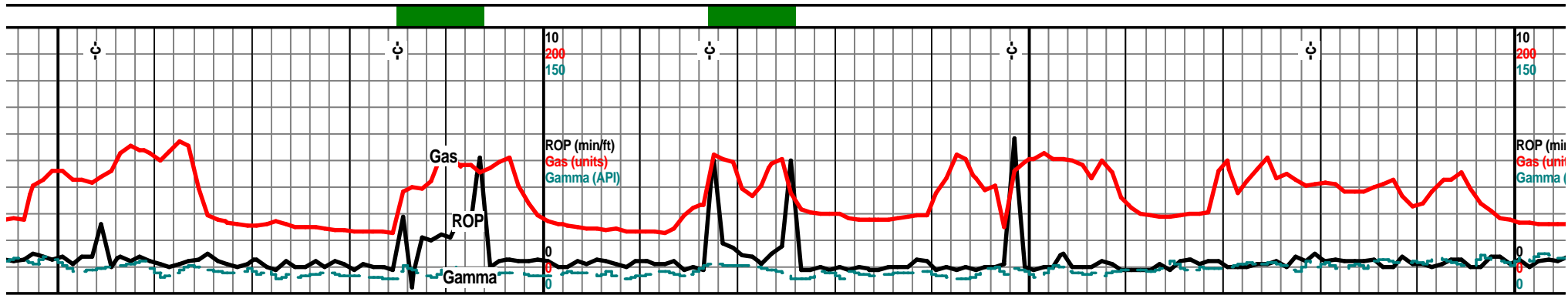
Depth (ft)	ROP (min/ft)	Gas (units)	Gamma (API)	Notes
6200				4650 TVD
6220				Bit Trip 6229'
6240				chrt lt gry lt smokey gry shrp frsh opa, blk ang shards, transi, sli transp in prt, with weath tan brn sli trip edges/sides, pp moldic por, tan lt brn and brn stain, grsy SFO, filmy SFO, tr gas bubs scatt UV
6260				chrt off wht lt gry lsmokey gry shrp fsh opa blk ang shards, semi transl, with tan brn some blk sli weath sli trip text edges, pp moldic por, tan brn stain, tr blk hvy stain tr gas bubs, odor?
6280				
6300				4650 TVD
6320				chrt off wht lt gry lt smokdey gry, shrp frsh opa, semi transl with weath, sli spongy, sli trip text edges, sides, tan brn stain color, gd vis pp moldic por, vug por, tan brn stain tr hvy blk stain, sli odor, gas bubs, floating droplets, dull scatt UV
6340				
4700				
4694'	88.3 deg @			177.4 az
4695'	87.5 deg @			177.4 az
4697'	87.4 deg @			178.4 az
4698'	87.7 deg @			178.8 az
4699'	87. deg @			179.1 az
4750				
4750				

sl, gran por, gas

chrt lt gry lt smokey color gry, shrp frsh opa, transi, blk ang shrp shards, chrt aa with tan brn weath sli trip text edges, gran spongy text in prt, pp moldic por, tan brn tr blk stain, grsy SFO, tr gas bubs, filmy SFO, scatt UV odor?

chrt, mstly frsh, lt gry off wht smokey gry shrp frsh opa, semi transl, blk ang sharp shrd, with tan brn some blk sli weath sli trip text edges/sides, tan brn stain, tr hvy blk stain, sli odor, gas bubs, floating oil droplets in sple water

chrt 70% f semi trans sli spongy tr blk stain SSFO, floz



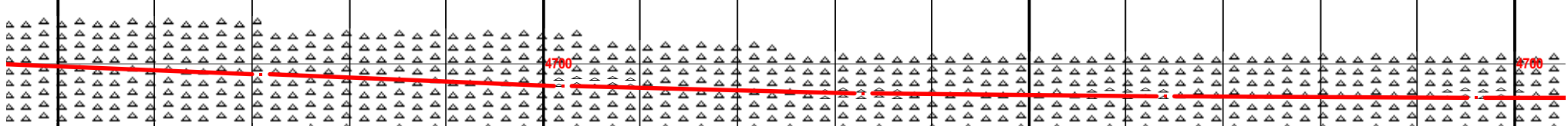
6360 6380 6400 6420 6440 6460 6480 6500

4650 TVD

chrt off wht lt gry smokey shrp frsh opa, transl, blk ang shards, with weath lsi gran some spongy tan brn stained sli trip eges, pp moldic por, tan brn stain tr blk hvy stain sli odor tr gas dull scatt UV. floating filmy SFO, wht spongy sli chlky chrt with NS

chrt lt gry lsmokdy gry shrp frsh opa semi transl with tan brn blk stain sli weath sli gran spongy trip edges/sides, tan brn blk some hvy blk stain pp moldic por on edges, blk SFO, tr gas bubs, scatt dull edge UV

chrt lt gry smokey lt gry shrp transl, some transp blk ang : tan brn colored sli trip some moldic por vug por, tan brn blk bubs dull UV



4701' 86.7 deg @ 179.3 az

4703' 87.3 deg @ 179.3 az

4704' 88.5 deg @ 181.3 az

4704' 89.7 deg @ 181.3 az

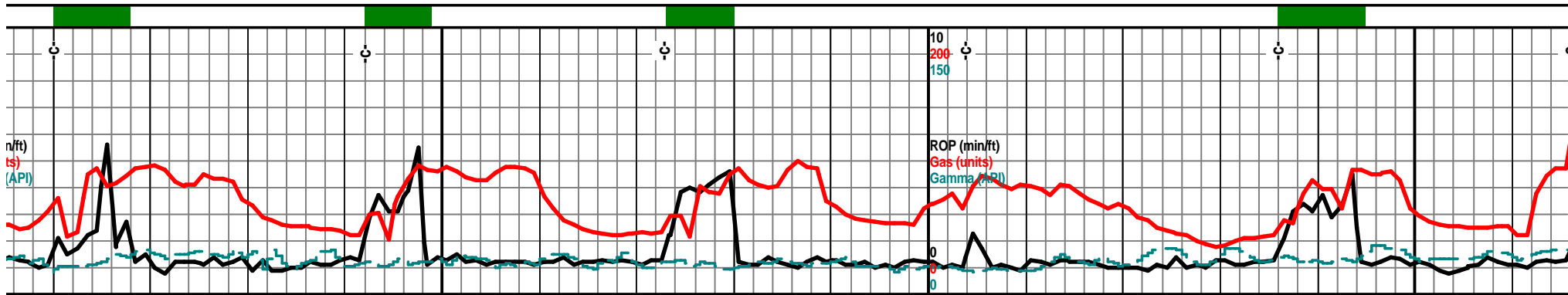
4704' 89.9 deg @ 181.3 az

rsh, lt gry lt smokey gry shrp frsh opa, blk ang sharp shard,s with weath grn text edges, tan brn edge color, tan brn pp moldic por, vug por, sli odor, stting drops, dull Scall UV

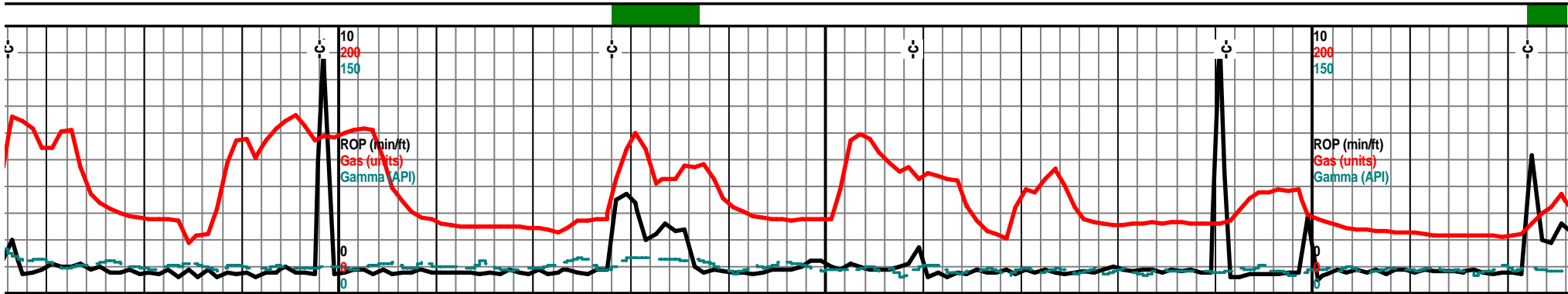
chrt off wht lt gry some drker gry, smokey color shrp frsh opa semi transl, tr transp, with tan brn blk stained sli weath edge, SSFO, blk SFO, gas bubs, sli odor? scatt dull UV, chrt wht gran spongy text, soft, tr stain msly NS

chrt lt wht lt gry lt smokey gry shrp frsh opa semi transl, tr transp, blk ang shards, with sli weath tan brn blk color stained edges, pp moldic por, drk brn SFO, tr blk hvy SFO, odor? dull scatt UV

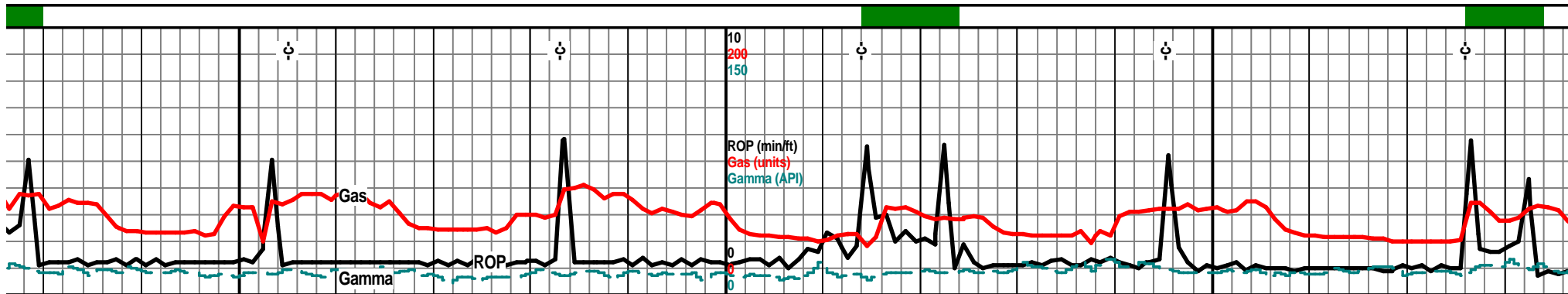
4750 4750



6520	6540	6560	6580	6600	6620	6640	6660	
				4650 TVD				
frsh opa semi shards with weath spongy text, pp lk stain, sli odor, gas	chrt lt gry lt smokey gry shrp frsh opa, transl, semi transp in prt, blkly ang shards, with sli weath tan brn blk colored sli trip text edges, brn blk tr hvy blk stain, SSFO, sli odor, much floating oil droplets			chrt as before, lt gry lt smokey gry shrp frsh opa, blk ang shrp transl shards with sli weath sli spongy sli trip text edges/sides, pp moldic vug por, tan brn blk colored staine edges, SSFO, tr gas, blk hvy stain, floating drops, dull scat UV				
4705' 89.5 deg @ 180.9 az	4705' 89.0 deg @ 180.7 az	4706' 88.9 deg @ 180.6 az	4706' 88.9 deg @ 180.7 az	4707' 87.8 deg @ 180.2 az				
chrt lt gry lt smokey gry shrp frsh opa, spl 80% frsh chrt NS, blkly ang hard shsard, with weath sli trip stli spong edge text, tan brn stained edges, pp moldic por, tan brn tr blk hvy stain VSSFO, gas bubs sli odor dull scat UV, floating oil droplets on spl water	chrt off wht lt smokey gry, shrp frsh opa, sub transl, blkly ang shards with weath gran sli trip edges/sides, pp moldic vug por, tan brn tr blk stained edges, tan brn stain, tr blk hvy stain SSFO, shl grsy FO, gas bubs odor? floating dropa			chrt as before, incr frsh less vis show, lt gry o wht/gry tr smokey gry shrp frsh opa, transl, sli weath text, sli trip spongy text, pp moldic p tan lt brn tr hvy blk stain, VSSFO. odor? blk gr SFO, dull scat UV				
				4750				



6680	6700	6720	6740	6760	6780	6800	6820
	4650 TVD					4670 TVD	
chrt as before, incr frsh lees vis show, off wht lt gry lt gry smokey color, shrp frsh opaa transl, blk ang shards, with some weath sli trip, gran, spongy text, pp moldic por, tan lt brn, some blk grsy stain, VSSFO, nodor, floating drops dull scat UV			chrt as before, incr vis shows, chrt lt gry tl smokey gry shrp frsh opa transl with weath gran sli trip some spongy text, pp moldic por, tan brn some blk stained edges, SSFO, blk grsy SFO, sli odor, floating droplets, scatt dull UV			chrt-less vis show incr frsh, chrt off wht lt gry lt smokey gry, shrp frsh transl with sli weath gran some spongy sli trip text edges, pp moldic vug por, tan brn some drk blk stain, SSFO, grsy SFO, tr gas bubs, dull scatt UV, much floating FO on spl tray water	
	4700					Scale Change 4720 4712'	
	4708'					88.6 deg @ 180.6 az	
	87.8 deg @ 180.6 az						
		4709'		4710'		4711'	
		87.8 deg @ 180.4 az		88.3 deg @ 180.0 az		88.4 deg @ 180.6 az	
ff with or, sy		chrt off wht lt gry lt smokey gry shrp frsh opaa transl, some transp, blk ang shards, with sli weath sli spongy edges/sides, pp moldic por, tan brn some blk stain edges, SSFO, odor? floaters dull UV		chrt lt gry, lt smokey gry shrp frsh opaa, transl, cloudy, shrp blk shards, with tan lt brn some blk colored stained edges, incr weath gran sli trip text edges, pp moldic por, SSFO, blk hvy stain, filmy RBSFO, floaters abound!, odor?			chrt off wht lt opa transl, t trip text edge moldic por, t grsy SFO, od
	4750					4770	



6840 6860 6880 6900 6920 6940 6960 6980

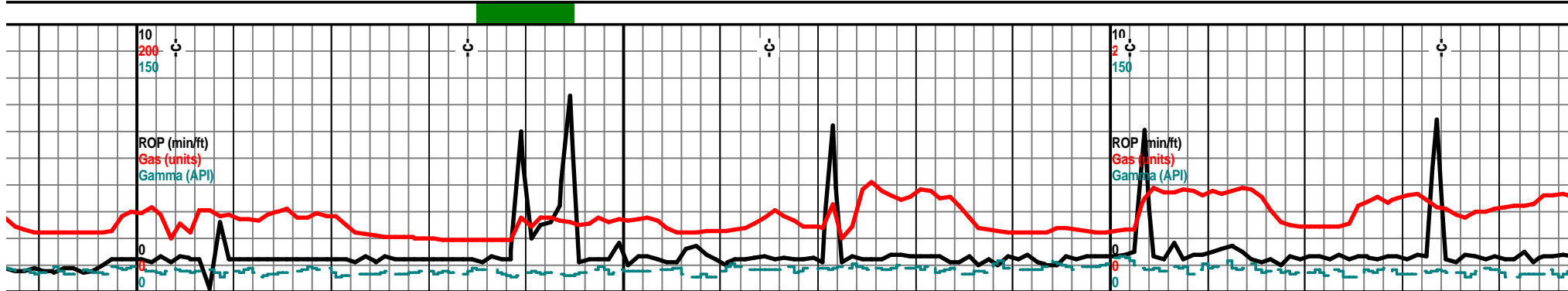
6848' 7am Minday, April 8, 2013				4670 TVD		Mud-Co. 6945' wt. 8.4 vis. 28 wl. N/C chl. 500		
Incr in frsh chrt content...chrt off wht lt gry lt smokey gry shrp frsh opa, transl, blk ang shards, with weath gran sli trip some spongy text, pp moldic por, tan lt brn brn blk hvy stain VSSFO, blk grsy SFO, sli odor?, dull scatt UV, much floaters						chrt wht off wht lt gry trl gry smokey shrp frsh opa, blk ang transl shards with sli weath edges, sli trip some spongy text, spl 80% frsh, tan brn some blk hvy stain, nodor, no gas bubs, mucho floating droplets.		chrt off wht lt gry shrp frsh op shards, transl, spl 85% frsh ch edge text, pp moldic por, tr ta stain, nodor, vry rare scatt UV



4713' 89.2 deg @ 180.6 az		4713' 89.9 deg @ 180.6 az		4713' 89.0 deg @ 180.7 az		4714' 87.6 deg @ 180.2 az		4715' 87.9 deg @ 180.4 az
---------------------------------	--	---------------------------------	--	---------------------------------	--	---------------------------------	--	---------------------------------

gry tl smokey color gry, shrp frsh blk ang shards, with sli weath sli s/sides, sliil gran spongy text, pp an brn some blk grsy stain, SSFO, lor? floaters		chrt off wht wht! lt gry shrp frsh opa, blk ang shards, semi transl, with tr to some weath edge, vry sli weath sli trip text edges, tan brn trn blk stain, VSSFO, floating droplets		chrt off wht lt gry, lt smokey gry shrp frhs opa, transl, spl 80% frsh chrt, with tr weath gran sli trip edges, tr edge stain, some pp moldic por, tan brn some blk hvy stain nodor, much floating drops
---	--	---	--	--

4770



7000 7020 7040 7060 7080 7100 7120 7140

4670 TVD 4670 TVD

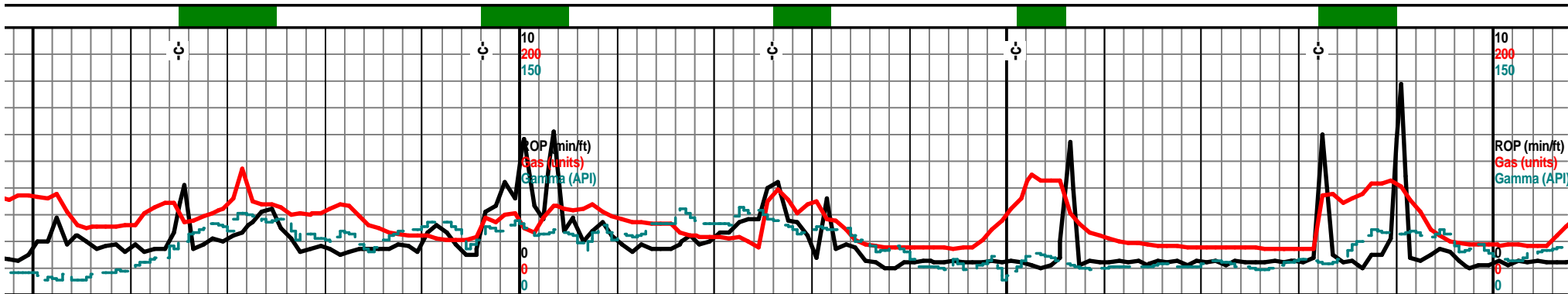
<p>chrt blk ang shrp rt, tr weath gran n brn and blk hvy , floating drops/oil</p>	<p>chrt wht off wht lt gry shrp frsh opa q blk y transl some cloudy, gran glau, msly shrp blk y ang shards, with tr weath fran sli trip text edges, tr pp moldic por, tan brn and blk stain, tr hvy blk stain nodor, ffloating droplets</p>	<p>chrt wht sli off wht shrp frsh blk y ang pcs, opa q semi transl, glau in prt, msly cloudy, tr weath gran semi spongy text, tr tan brn some blk hvy stain, nodor, floating oil drops, scatt dull edge UV</p>
---	---	--



<p>4716' 88.9 deg @ 180.6 az</p>	<p>4717' 89.6 deg @ 180.6 az</p>	<p>4717' 89.6 deg @ 180.0 az</p>	<p>4717' 90.1 deg @ 179.2 az</p>	<p>4717' 90.3 deg @ 179.5 az</p>
--	--	--	--	--

<p>chrt wht off wht lt gry shrp frsh opa q blk y transl, some cloudy, gran, glau, msly shrp blk y ang shards, with tr weath gran sli trip text edges, tr pp moldic por, tan lt brn brn and blk stain tr hvy blk stain, nodor, floating droplets</p>	<p>chrt wht off wht, frsh shrp frsh semi opa q, transl, tr glau cloudy, blk y ang pcs, tr weath gran tr spongy text, pp moldic por, sli tan brn some blkhvy stain, nodor, sli UV, floating oil drops</p>	<p>chrt off wht lt gry shrp frsh opa q, shrp ang shards, transl, some cloudy, with tr weath gran edges, sli tan brn some blk hvy stain, blk gry stain, nodor, floating oil drops</p>
---	--	--

4770 4770



7160 7180 7200 7220 7240 7260 7280 7300

4670 TVD

Bit Trip 7225'

chrt off wht wht frsh shrp blkly ang opaqt tr lt gry smokey, transl, with gran sli weath text, sli pp moldic por, tr sli stain, blk grsy hvy stain and hvy SFO, nodor, scatt edge UV

chrt lt gry lt tan/gry shrp frsh opaqt glassy, bky ang pcs, chrt wht off wht shrp blkly ang opaqt semi transl, lt smokey gry shrp opaqt semi transl shards, tr with weath edge text, tr tan brn blk stain, tr pp moldic por, nodor

chrt lt gry, dull lt gry shrp frsh opaqt trani pcs, chrt wht lt gry lt smokey blkly opaqt semi transl shards with w spongy edge text, pp moldic por, tan stain, tr hvy blk stain, sli odor, gas UV

TIH with Bit
7 am April 9, 2013



4716' 92.0 deg @ 180.2 az

4715' 92.6 deg @ 180.2 az

4714' 92.1 deg @ 180.0 az

4713' 92.1 deg @ 180.0 az

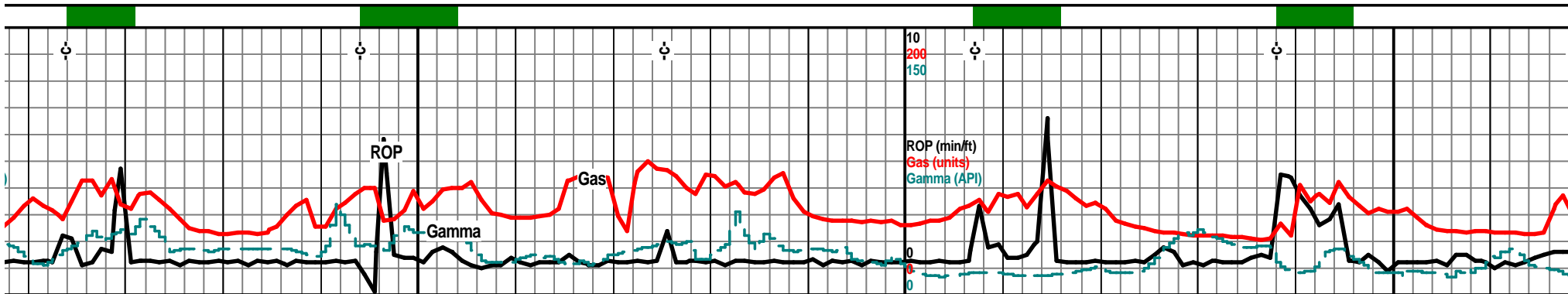
4712' 91.8 deg @ 180.0 az

4711' 89.7 deg @ 179.1 az

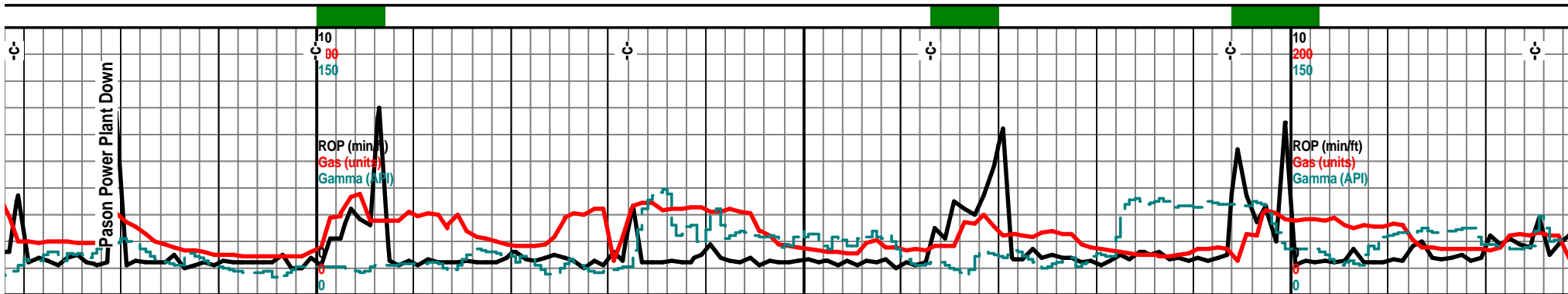
chrt lt gry dull gry shrp frsh opaqt, blkly ang pcs, chrt wht off wht, lt gry shrp frsh opaqt blkly ang pcs, sub transl, cloudy, with some weath gran sil trip edge text, sli pp moldic por, tan brn blk stain tr hvy blk stain, nodor, scatt UV, floating oil drops

chrt wht flky spongy gran in prt, glau, shrp frsh, chrt lt gry lt smokey gry shrp frsh opaqt transl, blkly ang shards, with weath gran sli trip text edges, pp moldic por, tan brn stain, tr hvy blk stain, nodor, tr gas bubs

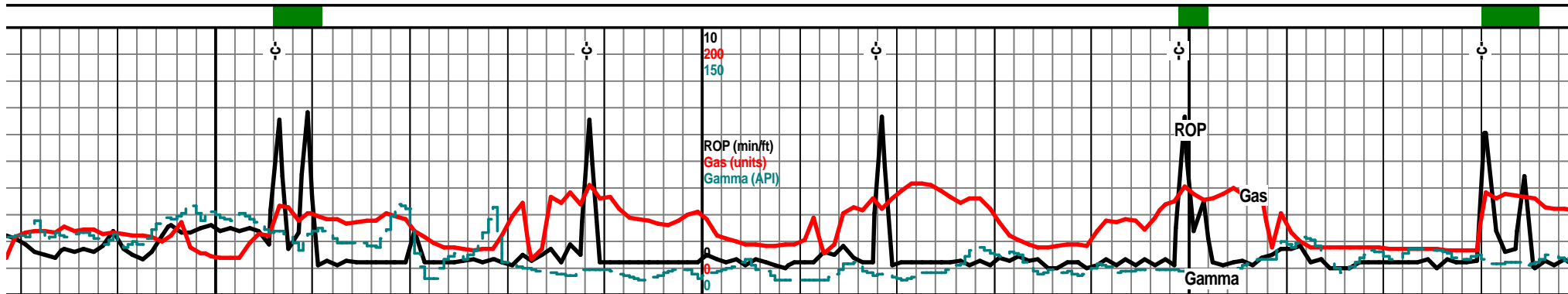
4770



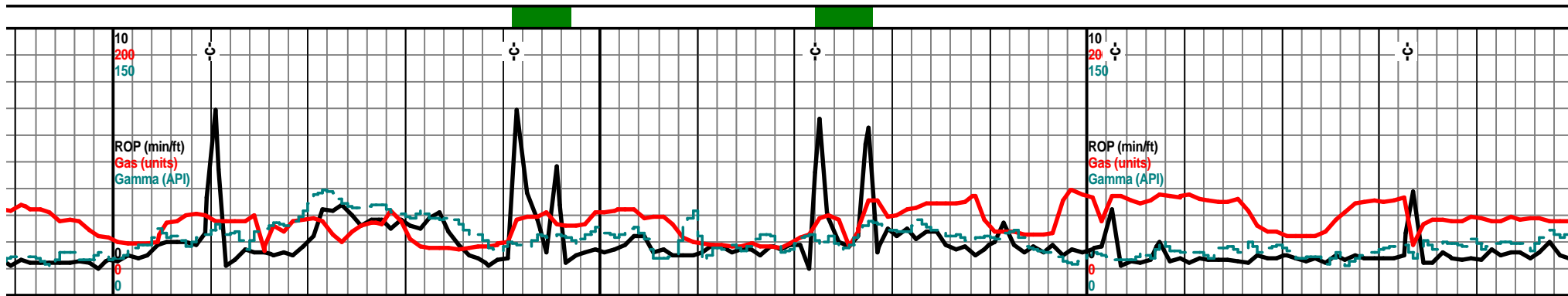
7320	7340	7360	7380	7400	7420	7440	7460
				4670 TVD			4712'
shly ang semi gry, shrp frsh eath sli trip sli an brn blk bubs, dull scat		chr dull gry shrp blk ang, opa, transl, some glau, chrt off wht lt gry shrp frsh opa, blk ang shrp shards, chrt lt gry smokey gry shrp frsh blk ang pcs with sli weath sli trip spongy edges, tan brn stained color, pp moldic por, SSFO, gas bubs, filmy SFO, many oil floaters.			chr dull gry/lt tan, shrp frsh, blk transl, chrt wht off wht lt gry shrp frsh opa, blk ang shrp shards, with sli weath sli trip/gran text edges, tan brn stained, VSSFO, blk gry stain, nodor, scatt UV		
	4712' 89.1 deg @ 178.5 az	4712' 88.9 deg @ 178.4 az		4713' 88.6 deg @ 178.4 az	4713' 90.1 deg @ 178.9 az		4713' 91.5 deg @ 179.3 az
chr lt gry dull gry shrp frsh opa blk ang sub transl pcs, chrt off wht lt gry lt gry smokey color, shrp ang blk opa shards, transl, with sli weath sli spongy tan brn stain edges, pp moldic por, vug por, VSSFO, filmy SFO, gas bubs, floating drops			chr off wht full gry shrp frsh opa blk ang transl, chrt off wht lt gry lt smokey gry shrp opa shards with tan brn stain weath sli gran spongy edges, pp moldic por, tan brn stain, try hvy blk stain, sli odor, gas bubs, many floaters, dull scatt UV			chr lt gry dull gry/tan, shrp frsh opa, semi transl, vit in prt, chrt off wht lt smokey gry, shrp frsh opa transl shards, with weath gran sli trip text edges, tan brn stained edges, tr hvy blk gry SFO, floating drops, sli odor, tr scat UV,	
				4770			



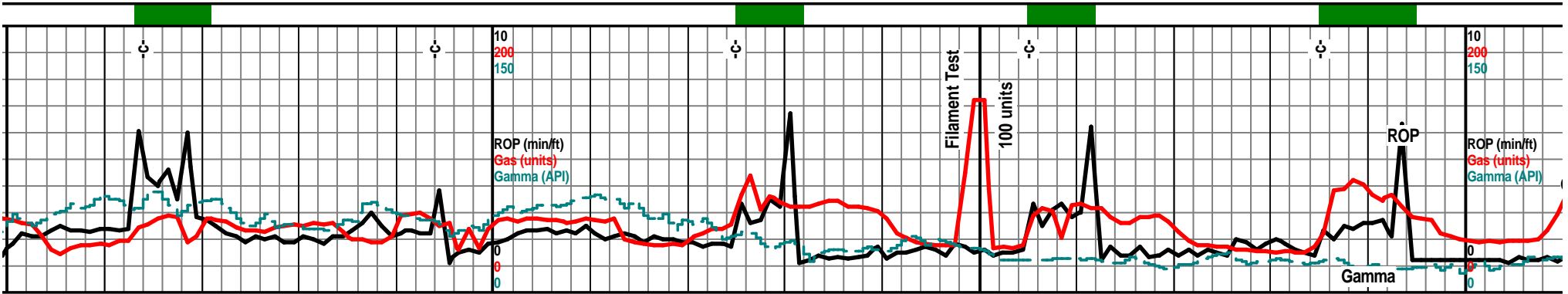
7480	7500	7520	7540	7560	7580	7600	7620
	4670 TVD					4670 TVD	
Power Loss							
chrt dull tan/gry shrp frsh blk semi transl, chrt vht off wht lt smokey gry shrp frsh blk semi ransi shards with tr weath gran sli text dges/sides, tan brn stained color, tr hvy blk stain, grsy SFO, scatt UV, sli odor?			chrt off wht, dull gry/tan shrp frsh, blk ang pcs, semi transl, with tr weath gran edges, sli pp moldic por, drk brn blk stain tr hvy blk SFO, dead stain, sli odor, filmy SFO			chrt (chrt 85% frsh in spl) off wht and lt gry dull tan, shrp frsh blk semi transl, ang pcs, opa wit tr weath edges, sli pp moldic por, drk brn blk stain, blk grsy SFO, sli odor, tr film SFO, scatt dull UV	
	4720					4720	
4712' 91.0 deg @ 179.4 az		4712' 89.6 deg @ 180.0 az		4712' 89.8 deg @ 180.3 az	4712' 89.8 deg @ 179.1 az	4712' 89.2 deg @ 178.6 az	
		chrt wht off with lt gry, lt gry/tan, shrp frsh opa, semi transl, hrd blk pcs, with sli tr weath edge, tr gran sli trip edges, brn blk stained, tr blk grsy stain, sli odor, scatt UV, show: poor		chrt lt gry dull gry/tan shrp blk ang pcs, semi transl, opa, with tr weath edges, sli pp moldic por, drk brn blk stain blk grsy SFO, sli odor filmy SFO		chrt off wht lt gry, transl, blk hrd pc spongy, tr sli wea brn drk brn stain, many floating dro	
	4770					4770	



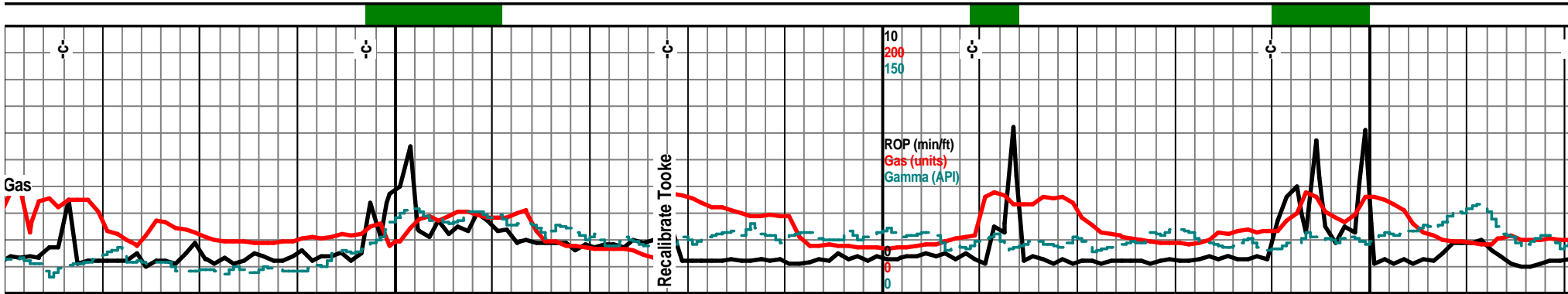
7640	7660	7680	7700	7720	7740	7760	7780
7 am 7638' April 10, 2013 Ice Storm!	chrt off wht lt gry dull tan/gry shrp frsh blk y ang transl pcs, with chrt lt gry tr gran spongy text, tr sli weath edge text, pp moldic por, tan brn drk brn stain, tr hvly BlkSFO, filmy SFO, much floating oil drops in spl tray, scatt dull edge UV		4670 TVD	chrt incr frsh less vis show, wht off wht lt gry shrp frsh opa ang blk y shards, semi transl, tr glau, tr weath gran sli trip text edges, pp moldic por, tan brn blk stain, tr hvly blk stain, odor?, dull scat UV, floaters			chrt off wht lt gry dull gry/tan, shr blk y ang opa q pcs, chrt off wht lt frsh opa q with sli weath text edge por, tan brn some blk stained edge grsy stain, floaters, dull scat UV, :
4713' 90.2 deg @ 178.7 az	4712' 90.7 ded @ 178.4 az		4720	4712' 90.2 deg @ 178.7 az	4712' 89.7 deg @ 178.6 az	4712' 90.1 deg @ 178.9 az	
dull lt gry/tan, shrp frsh opa q, s, with chrt lt gry tr gran th edge text, pp moldic por, tan tr hvly blk stain, hvly blk SFO, ps, odor? scatt dull UV	chrt wht off wht lt gry in prt, shrp frsh opa q, semi transl, shrp ang shards, with sli weath gran sli trip text edges, tan brn stained, pp moldic por, tan brn stain, tr hvly blk stain, sli odor, grsy stain, gas bubs, floating drops, scatt UV		4770	chrt off wht lt gry dull gry/tan shrp frsh blk y ang pcs, tr glau, chrt wht lt gry shrp frsh opa q sharp shards with weath text edges, pp moldic por, tan brn blk stained color, tan brn stain, Filmy SFO, bly hvly grsh stain odor? scatt UV			



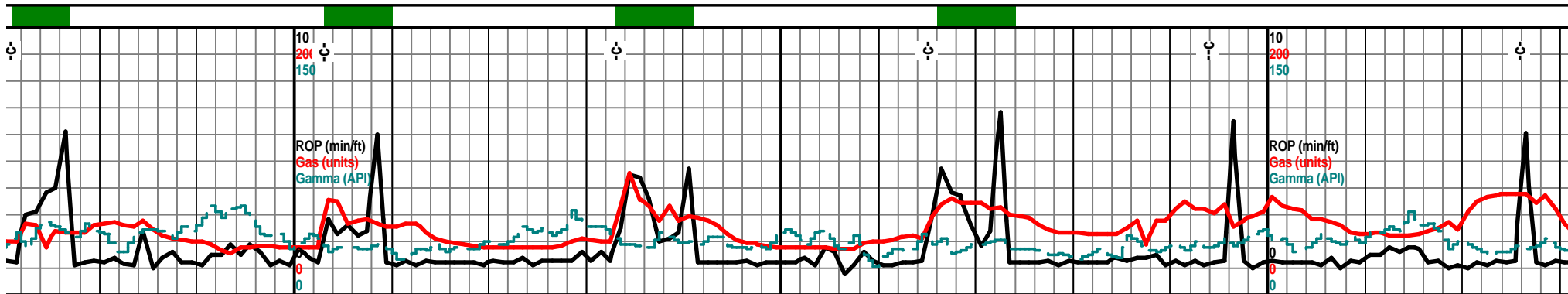
Depth	7800	7820	7840	7860	7880	7900	7920	7940
39'								
38'								
300'	4670 TVD							4670 TVD
300'			chrt lt wht off wht lt gry vry lt smokey gry shrp frsh opaq semi tansl to transp in prt shrp shards, with tr weath gran sli trip edge text, tr stain, tan brn stain pp moldic por, nodor, tr UV			chrt off wht lt gry lt gry smokey shrp frsh opaq, blky ang shrds with chrt wht frash blky ang gran tr spongy, sli trip text, weath tan brn stain, pp moldic por, brn blk stain, tr gas bubs, floaters		
	4720					4720		
	4712' 90.5 deg @ 178.7 az	4712' 89.7 deg @ 179.1 az		4712' 90.0 deg @ 179.1 az	4712' 90.7 deg @ 178.6 az		4711' 91.3 deg @ 178.6 az	4711' 90.8 deg @ 178.7 az
	chrt wht off wht lt gry shrp frsh opaq, semi transl, shrp ang shards, gran spongy in prt, tr glau, with sli weath sli trip gran text edges/sides, pp moldic por, tan brn and blk stain, VSSFO, blk grsy SFO. abun floaters, sli odor, dull scat edges UV			chrt off wht lt gry vry lt smokey gry shrp frsh opaq ang blky sharp shards, tr glau, with tr weath gran sli trip edge texts, mostly frsh, tr moldic pp por, tr tan brn stain, tr blk hvy stain, grsy SFO, floaters, nodor.			chrt off wht lt gry shrp frsh blky ang opaq, tr gran spongy edge, tr weath sli trip text edge, drk brn blk stained edges, pp moldic por, blk SFO, floaters, odor?, dull scat edge UV	
	4770					4770		



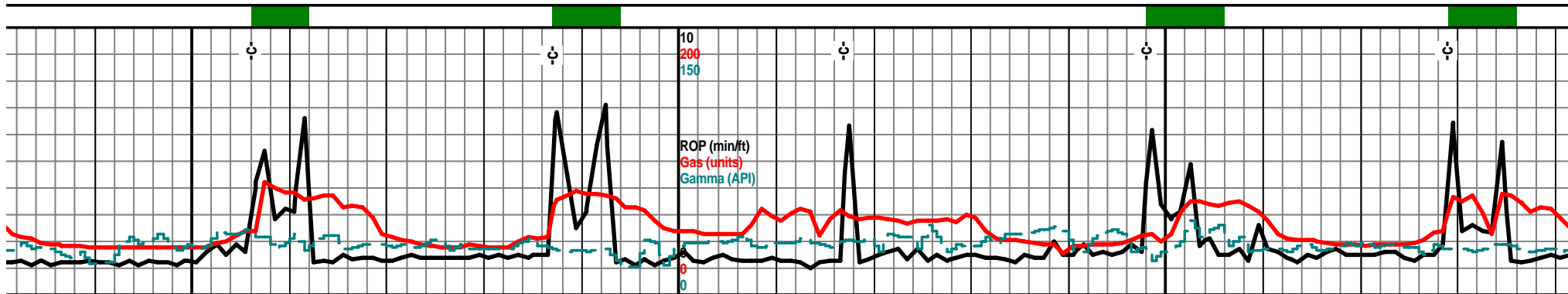
7960	7980	8000	8020	8040	8060	8080	8100
		4670 TVD					4670 TVD
hrt off wht, wht, lt gry shrp frsh blk ang opa emi transl shards, with gran sli spongy omewhat sli trip text, pp moldic por, tan brn ome blk stained edges, sli odor, filmy SFO, blk rsy stain, scatt dull UV, floaters			chrt off wht lt gry some wht, shrp frsh opa, semi transl, blk ang shards with sli weath gran sli spongy text, tan brn some blk stained edges, pp moldic some vug por, VSSF0, blk grsy stain, blk grsy SFO, scatt UV, floaters			chrt wht gran sli soft sli chlkly/spongy, chrt wht off wht lt smokey gry, shrp frsh opa, semi transl blk ang shrds, with weath gran sli trip text edges/sides, pp moldic por, tan brn stained color, tan brn stain, tr hvy blk stain/SFO, SSFO, nodor, mucho floating droplets	
		4720	4711'	4712'	4712'	4712'	4720
			88.6 deg @	88.8 deg @	90.4 deg @		4711'
			178.0 az	177.2 az	177.9 az		92.0 deg @
							178.4 az
			chrt wht off wht tr lt smokey gry, shrp frsh opa, blk ang shards, with sli weath sli gran text edges/sides, sli tan brn some blk stain, pp moldic por, sli vug por, tan brn stain, filmy SFO, scatt UV		chrt wht frsh, gran tr spongy/subchlkly text, chrt wht off wht tr lt gry shrp frsh opa, transl, blk ang shards, with sli weath gran sli trip text edges, sides, tan brn stained, pp moldic por, SSFO, hvy grsy SFO, scatt UV, much floating oil drops on spl water, nodor		chrt wht sli soft g lt gry, lt smokey g glau, shrp blk ang trip text edges, ta tr hvy blk stain/S bubs/oil droplets
		4770					4770



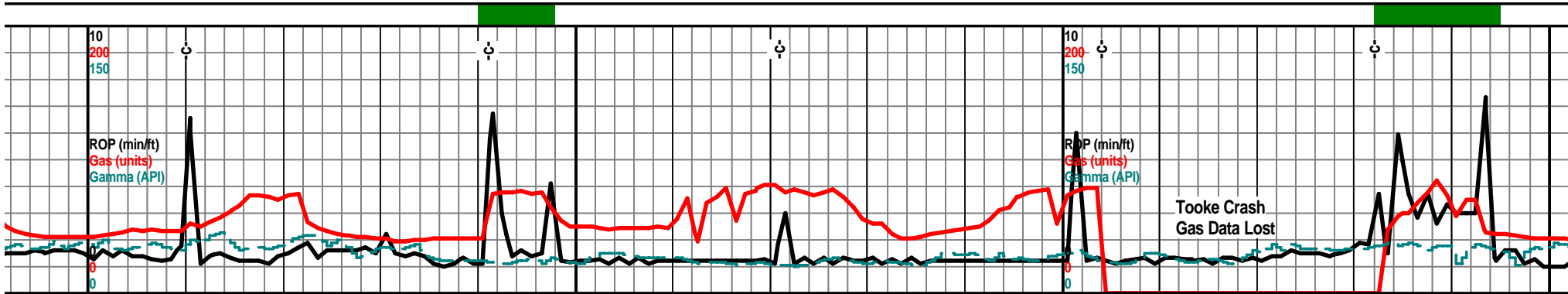
8120	8140	8160	8180	8200	8220	8240	8260
				8178' 7 am April 11, 2013 Bit Trip			
chrt wht off wht lt smokey gry, shrp frsh opa, trans, blk ang shrp shards, with soft gran sli weath sli trip text edges, pp moldic por, tan brn mstly blk stained edges, tan brn stain, SSFO, mstly blk hvy grsy SFO, floaters, rare dull scatt UV				chrt lt gry lt smokey gry shrp frsh opa, semi trans, blk ang shrp shards, with tr weath gran edge text, pp moldic por, tan brn stain, mstly barren, tr blk hvy grsy stain poor sampe-rxs not up yet!		chrt lt gry off wht dull tan/gry shrp frsh semi trans, blk ang pcs, chrt off wht w shrp opa with sli weath sli gran text, p brn stain, drk tan bry hvy grsy SFO, noc scatt UV	
4710' 92.7 deg @ 178.7 az		4709' 91.9 deg @ 178.6 az		4708' 92.3 deg @ 179.0 az		4706' 92.7 deg @ 179.1 az	
gran/spongy aa, chrt wth off wht gry shrp frsh opa semi trans, tr ng shards with sli weath gran sli in brn stained color, tan brn stain FO, SSFO, nodor, floating gas				chrt off wht, off wht, frsh gran soft, chrt wht off wht lt gry smokey, shrp frsh opa trans, blk ang shrds, with weath gran sli trip text edges, pp moldic por, tan brn some blk stained edges, tan brn mstly blk hvy stain, floaters, nodor,		chrt off wht lt gry, shrp frsh opa, semi trans, blk ang shrds, chrt off wht wht frsh gran tr spongy sli trip text, pp moldic por, tan brn some blk stain, blk grsy stain sli odor?, scatt dull UV, dull show	
				4670 TVD			
				4720			
				4770			



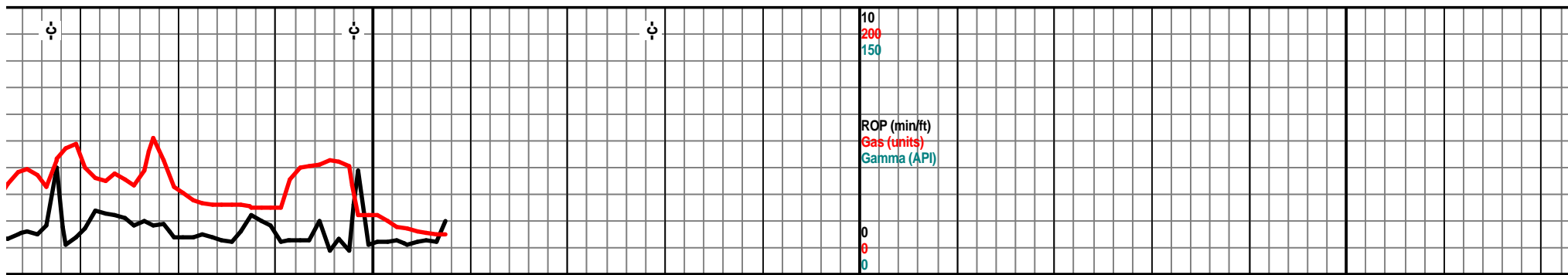
8280	8300	8320	8340	8360	8380	8400	8420
	4670 TVD					4670 TVD	7 am 8427' April 12, 2013
opaq, rht frsh p por, tan for, dull		chrt incr frsh, lt gry, wht lt gry mott, shrp frsh blk opa ang shrp shards, tr glau, with sli weath gran edges, frac pp moldic por, drk tan brn stain, grsy hvy stain/SFO, no gas nodor			chrt off wht lt gry, dull gry/tan, shrp frsh opa, semi transl, some semi transp, blk ang shrp shards, tr tan brn mstly blk edge stain, some blk grsy stain, nodor, tr floating drops		chrt semi shar por, nod
	4704' 91.8 deg @ 179.1 az		4703' 91.0 deg @ 179.0 az		4703' 90.1 deg @ 179.3 az		4703' 89.7 deg @ 180.0 az
	4720					4720	
chrt lt gry, lt gry wht mott, shrp frsh opa, semi transp, blk ang shards, tr glau, with chrt off wht shrp frsh shrp opa semi transl, blk ang pcs with sli weath gran some spongy text edges, tan brn stained, drk brn stain, tr hvy grsy stain, nodor, some floaters, dull scatt UV		chrt off wht lt gry, dull gry/tan, shrp frsh blk opa shrp shards, semi transl, tr glau, with tr drk brn blk edge stain, nodor, rare scatt edge UV, tr floating drops			chrt off wht, lt gry, dull gry/tan, shrp frsh opa, semi transl, some semi transp, blk ang shrp shards, tr tan brn mstly blk stain, some blk grsy stain, nodor, tr floating oil droplets		
	4770					4770	



8440	8460	8480	8500	8520	8540	8560	8580
Mud-Co. 8459' wt. 8.4 vis. 27 wl. N/C chl. 600			4670 TVD				
off wht lt gry, dull gry/tan, shrp frsh opa, i transl, some sli transp, shrp blk ang shrp ds, tr drk stained edge, tr frac, pp small vug drk brn blk stain, mstly blk hvy grsy stain or, tr floaters, scatt rare UV			chrt off wht lt gry, lt gry dull tan/gry shrp frsh opa, semi transl, blk ang shrp shards with trn brn blk stained edges, blk hvy stain, nodor, scatt rare edge UV			chrt off wht lt gry, dull tan/lt gry, shrp frsh opa, shdards, semi transl, blk ang hrd, with sli tr weath text (rare) wht drk brn blk grsy stain, nodor, rare scat UV	
4703' 89.9 deg @ 179.5 az	4704' 89.4 deg @ 180.0 az	4704' 88.8 deg @ 180.0 az	4705' 89.1 deg @ 180.2 az	4705' 88.5 deg @ 180.2 az			
	chrt off wht lt gry, dull lt gry/tan shrp frsh opa, semi transl, blk ang shrp shards, with trace brn blk stained edges. blk hvy stain, nodor, nogas, scat rare edge UV, floaters gone		chrt off wht lt gry, dull tl gry/tan, shrp frsh opa, semi transl, blk ang sharp shards, with trace vrn blk stained edges, blk hvy stain nodor, scat rare edge UV, tr floating drops			chrt off wht lt gry, tr dul semi transl, blk ang shr text edge stain little if a stain, nodor, no floater:	
			4770				



8600	8620	8640	8660	8680	8700	8720	8740
4670 TVD					4670 TVD		
chrt off wht lt gry, dull lt tan/gry, shrp frsh opa, semi transl, blk ang shrp pcs, with rare trace weath text edges/sides, and tr brn brl mstly hvy blk stain, nodor, NSFO, dull scat edge UV			chrt off wht clr, gry wht mott, shrp frsh opa shrp blk transl shrp shrds, tr rare pp moldic por, tan brn blk stain, tr blk hvy stain, grsy SFO, tr gas bubs, nodor, scat rare dull UV			chrt wht off wht lt gry shrp frsh opa sub tra blk ang shards with incr sli weath edge tex some moldic por, drk tan brn stain, drk grsy stain, grsy SFO, nodor, no gas, dull scatt UV	
4706' 87.4 deg @ 180.4 az	4720	4708' 87.9 deg @ 180.2 az	4709' 88.1 deg @ 179.8 az	4710' 88.1 deg @ 179.8 az	4720	4711' 88.1 deg @ 179.8 az	4711' 88.9 deg @ 179.5 az
ll gry/tan, shrp frsh opa p shards, with tr weath ny vis por, drk brn blk hvy s			chrt off wht whlt lt gry, dull gry tan shrp frsh opa, semi transl, shrp blk ang shrads, with rare weath edges/sides, small pp moltic por, brn blk stain, tr hvy blk stain, nodor			chrt off wht clr, gry wht mott in prt, shrp frsh opa blk transl shards, tr pp moldic por, tan brn mstly blk hvy stain, tr hvy blk grsy SFO, nodor, tr gas bubs	
4770					4770		



8920

8940

8960

8980

9000

9020

9040

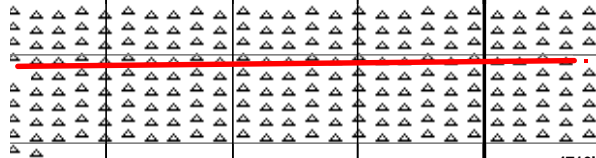
9060

4670 TVD

ff wht lt gry, lt gry/wht mott, shrp frsh opa, shardy, with some weath gran sli spongy ext, tr pp moldic por, brn blk stain, biky hvy FO, odor? scatt UV

Total Depth MD 8958'

Woolsey Operating Co.
Lincoln Trust #2 H
N 1/2 NE 1/4 SE 1/4
2310' FSL, 660' FEL
Sec 14-TWP 34 S-Rge 11 W
Barber County, Kansas



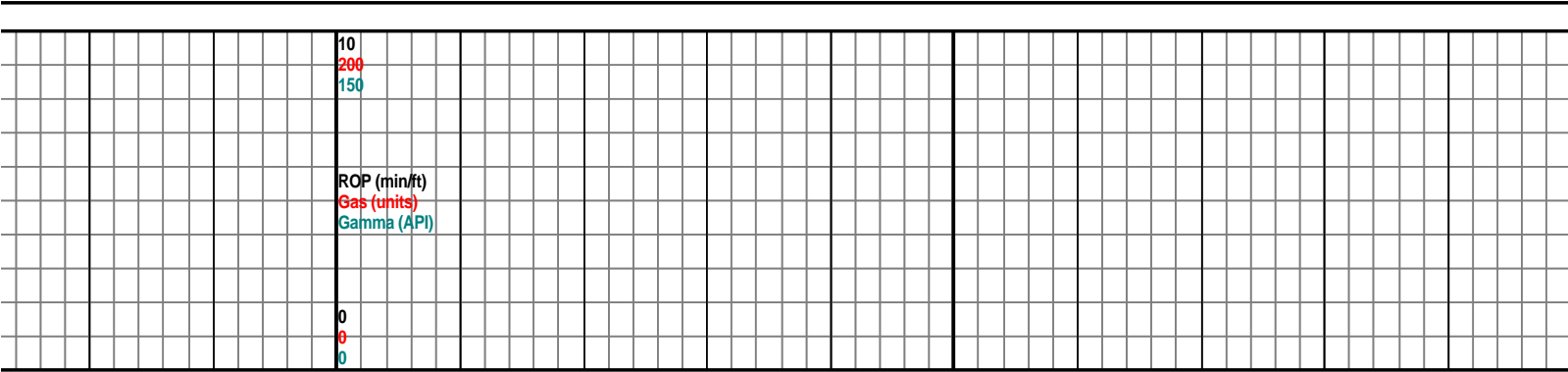
'11'
leg @
0.0 az

4710'
90.7 deg @
180.0 az

4720

chrt lt gry, off gry wht mott, frsh shrp blk ang shards, sub transl, with some weath gran spongy edge text, pp moldic por, drk tan brn and blk stain, drk stain hvy grsy stain nodor, no gas, scat dull edge UV

4770



9080	9100	9120	9140	9160	9180	92
------	------	------	------	------	------	----

