



## DRILL STEM TEST REPORT

Prepared For: **Shelby Resources LLC**

2717 Canal BLVD.  
Suite C  
Hays Kansas, 67601

ATTN: Keith

**Eakin #7-7**

**7/22s/16w/Pawnee**

Start Date: 2013.06.09 @ 13:35:00

End Date: 2013.06.09 @ 21:01:30

Job Ticket #: 17594                      DST #: 3

Superior Testers Enterprises LLC  
PO Box 138 Great Bend KS 67530  
1-800-792-6902

Printed: 2013.06.09 @ 21:18:13



# DRILL STEM TEST REPORT

Shelby Resources LLC

**7/22s/16w/Pawnee**

2717 Canal BLVD.  
Suite C  
Hays Kansas, 67601  
ATTN: Keith

**Eakin #7-7**

Job Ticket: 17594

**DST#: 3**

Test Start: 2013.06.09 @ 13:35:00

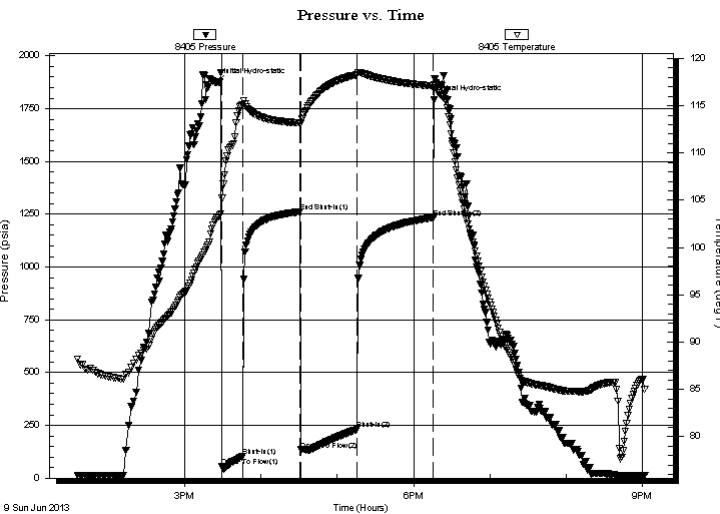
## GENERAL INFORMATION:

Formation: **Arbuckle**  
 Deviated: No Whipstock: ft (KB)  
 Test Type: Conventional Bottom Hole (Initial)  
 Time Tool Opened: 15:29:30  
 Tester: Shane Konzem  
 Time Test Ended: 21:01:30  
 Unit No: 3330/50/Great Bend  
 Interval: **3889.00 ft (KB) To 3895.00 ft (KB) (TVD)**  
 Reference Elevations: 2019.00 ft (KB)  
 Total Depth: 3895.00 ft (KB) (TVD)  
 2006.00 ft (CF)  
 Hole Diameter: 7.88 inches  
 Hole Condition: Fair  
 KB to GR/CF: 13.00 ft

## Serial #: 8405

Press @ RunDepth: 230.24 psia @ ft (KB) Capacity: 5000.00 psia  
 Start Date: 2013.06.09 End Date: 2013.06.09 Last Calib.: 2013.06.09  
 Start Time: 13:35:00 End Time: 21:01:30 Time On Btm: 2013.06.09 @ 15:25:30  
 Time Off Btm: 2013.06.09 @ 18:16:00

**TEST COMMENT:** 1st Open/ 15 Minutes. Good blow built to bottom of 5 gallon bucket in 1 minute 45 seconds.  
 1st Shut In/ 45 Minutes. Blow back built to bottom of 5 gallon bucket in 43 minutes.  
 2nd Open/ 45 Minutes. Good blow built to bottom of 5 gallon bucket in 4 minutes and 45 seconds. No gas to surface.



## PRESSURE SUMMARY

Time (Min.)	Pressure (psia)	Temp (deg F)	Annotation
0	1876.00	103.09	Initial Hydro-static
4	54.32	105.18	Open To Flow (1)
20	102.67	115.14	Shut-In(1)
65	1261.94	113.19	End Shut-In(1)
66	133.66	113.07	Open To Flow (2)
110	230.24	118.28	Shut-In(2)
170	1234.26	117.06	End Shut-In(2)
171	1791.89	117.21	Final Hydro-static

## Recovery

Length (ft)	Description	Volume (bbl)
0.00	2709 feet gas	0.00
720.00	clean oil	7.09
10.00	50% oil, 50% mud	0.14
0.00	Oil gravity was 47 corrected.	0.00

## Gas Rates

	Choke (inches)	Pressure (psia)	Gas Rate (Mcf/d)



# DRILL STEM TEST REPORT

Shelby Resources LLC

7/22s/16w/Pawnee

2717 Canal BLVD.  
Suite C  
Hays Kansas, 67601  
ATTN: Keith

**Eakin #7-7**

Job Ticket: 17594

**DST#: 3**

Test Start: 2013.06.09 @ 13:35:00

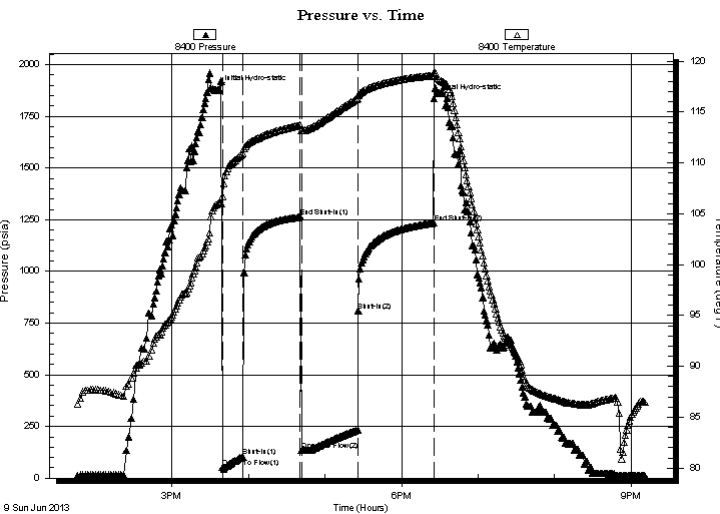
## GENERAL INFORMATION:

Formation: **Arbuckle**  
 Deviated: No Whipstock: ft (KB)  
 Time Tool Opened: 15:29:30  
 Time Test Ended: 21:01:30  
 Interval: **3889.00 ft (KB) To 3895.00 ft (KB) (TVD)**  
 Total Depth: 3895.00 ft (KB) (TVD)  
 Hole Diameter: 7.88 inches Hole Condition: Fair  
 Test Type: Conventional Bottom Hole (Initial)  
 Tester: Shane Konzem  
 Unit No: 3330/50/Great Bend  
 Reference Elevations: 2019.00 ft (KB)  
 2006.00 ft (CF)  
 KB to GR/CF: 13.00 ft

## Serial #: 8400

Press @ RunDepth: 1234.30 psia @ ft (KB) Capacity: 5000.00 psia  
 Start Date: 2013.06.09 End Date: 2013.06.09 Last Calib.: 2013.06.09  
 Start Time: 13:45:00 End Time: 21:11:00 Time On Btm: 2013.06.09 @ 15:35:30  
 Time Off Btm: 2013.06.09 @ 18:25:30

**TEST COMMENT:** 1st Open/ 15 Minutes. Good blow built to bottom of 5 gallon bucket in 1 minute 45 seconds.  
 1st Shut In/ 45 Minutes. Blow back built to bottom of 5 gallon bucket in 43 minutes.  
 2nd Open/ 45 Minutes. Good blow built to bottom of 5 gallon bucket in 4 minutes and 45 seconds. No gas to surface.



## PRESSURE SUMMARY

Time (Min.)	Pressure (psia)	Temp (deg F)	Annotation
0	1877.19	105.97	Initial Hydro-static
4	52.02	106.72	Open To Flow (1)
20	104.63	110.94	Shut-In(1)
65	1262.35	113.70	End Shut-In(1)
66	135.62	113.21	Open To Flow (2)
111	808.10	116.64	Shut-In(2)
170	1234.30	118.58	End Shut-In(2)
170	1836.75	118.89	Final Hydro-static

## Recovery

Length (ft)	Description	Volume (bbl)
0.00	2709 feet gas	0.00
720.00	clean oil	7.09
10.00	50% oil, 50% mud	0.14
0.00	Oil gravity was 47 corrected.	0.00

## Gas Rates

	Choke (inches)	Pressure (psia)	Gas Rate (Mcf/d)



# DRILL STEM TEST REPORT

**TOOL DIAGRAM**

Shelby Resources LLC

**7/22s/16w/Pawnee**

2717 Canal BLVD.  
Suite C  
Hays Kansas, 67601  
ATTN: Keith

**Eakin #7-7**

Job Ticket: 17594

**DST#: 3**

Test Start: 2013.06.09 @ 13:35:00

## Tool Information

Drill Pipe:	Length: 3567.00 ft	Diameter: 3.80 inches	Volume: 50.04 bbl	Tool Weight: 2000.00 lb
Heavy Wt. Pipe:	Length: 0.00 ft	Diameter: 0.00 inches	Volume: 0.00 bbl	Weight set on Packer: 20000.00 lb
Drill Collar:	Length: 330.00 ft	Diameter: 2.25 inches	Volume: 1.62 bbl	Weight to Pull Loose: 92000.00 lb
			<u>Total Volume: 51.66 bbl</u>	Tool Chased 0.00 ft
Drill Pipe Above KB:	31.00 ft			String Weight: Initial 74000.00 lb
Depth to Top Packer:	3889.00 ft			Final 78000.00 lb
Depth to Bottom Packer:	ft			
Interval between Packers:	6.00 ft			
Tool Length:	29.00 ft			
Number of Packers:	1	Diameter: 6.75 inches		

Tool Comments:

## Tool Description

Tool Description	Length (ft)	Serial No.	Position	Depth (ft)	Accum. Lengths
SHut-InTool	5.00		Inside	3871.00	
Hydraulic Tool	5.00			3876.00	
Jars	6.00			3882.00	
Safety Joint	2.00			3884.00	
Packer	5.00			3889.00	23.00 Bottom Of Top Packer
Anchor	1.00			3890.00	
Recorder	1.00	8405	Inside	3891.00	
Recorder	1.00	8400	Outside	3892.00	
Bullnose	3.00			3895.00	6.00 Anchor Tool
<b>Total Tool Length:</b>	<b>29.00</b>				



# DRILL STEM TEST REPORT

## FLUID SUMMARY

Shelby Resources LLC

**7/22s/16w/Pawnee**

2717 Canal BLVD.  
Suite C  
Hays Kansas, 67601  
ATTN: Keith

**Eakin #7-7**

Job Ticket: 17594

**DST#: 3**

Test Start: 2013.06.09 @ 13:35:00

### Mud and Cushion Information

Mud Type: Gel Chem  
Mud Weight: 9.00 lb/gal  
Viscosity: 49.00 sec/qt  
Water Loss: 8.00 in<sup>3</sup>  
Resistivity: ohm.m  
Salinity: 6100.00 ppm  
Filter Cake: 1.00 inches

Cushion Type:  
Cushion Length: ft  
Cushion Volume: bbl  
Gas Cushion Type:  
Gas Cushion Pressure: psia

Oil API: deg API  
Water Salinity: ppm

### Recovery Information

Recovery Table

Length ft	Description	Volume bbl
0.00	2709 feet gas	0.000
720.00	clean oil	7.094
10.00	50% oil, 50% mud	0.140
0.00	Oil gravity w as 47 corrected.	0.000

Total Length: 730.00 ft      Total Volume: 7.234 bbl

Num Fluid Samples: 0

Num Gas Bombs: 0

Serial #:

Laboratory Name:

Laboratory Location:

Recovery Comments:

