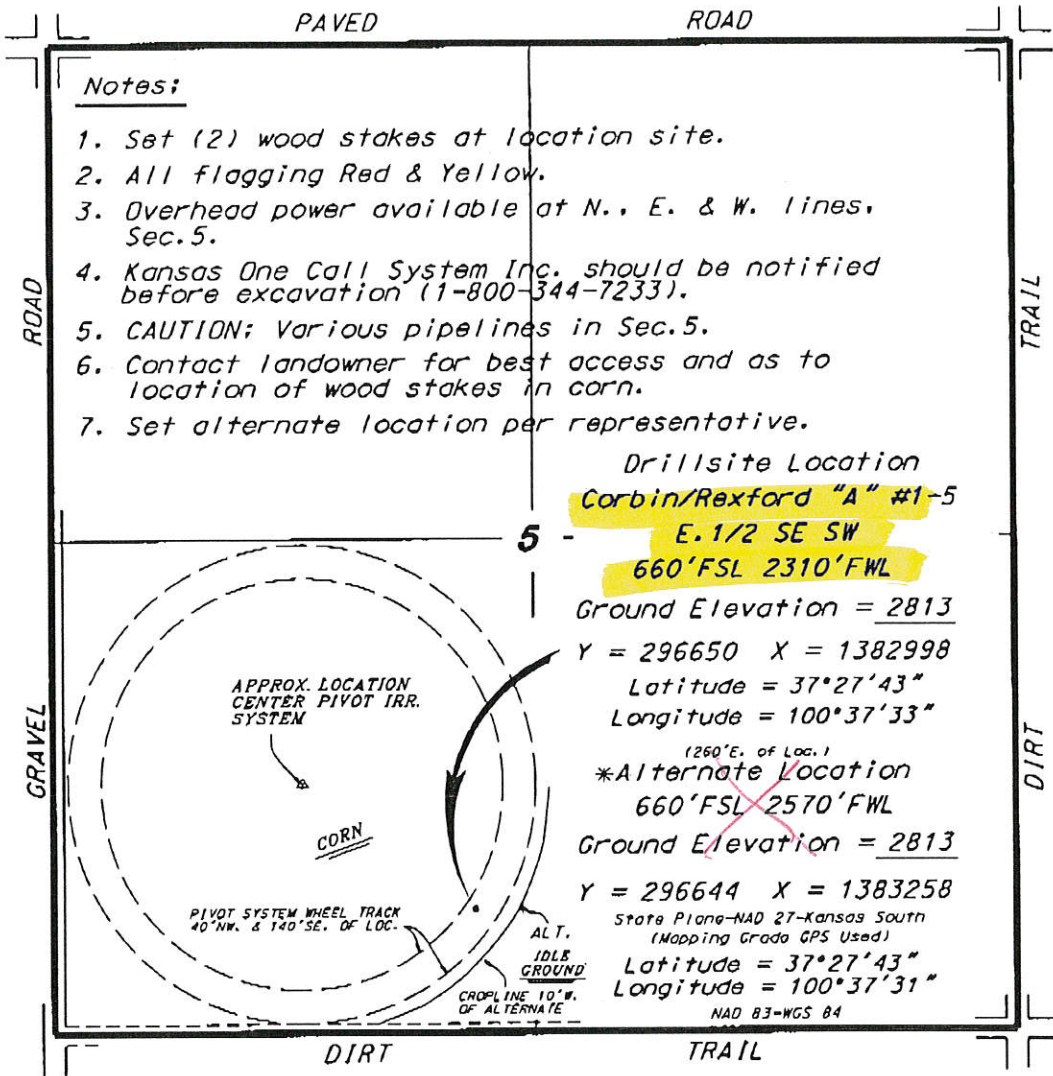


MCCOY PETROLEUM CORPORATION
CORBIN/REXFORD LEASE
SW. 1/4, SECTION 5, T30S, R30W
MEADE COUNTY, KANSAS



Notes:

1. Set (2) wood stakes at location site.
2. All flagging Red & Yellow.
3. Overhead power available at N., E. & W. lines, Sec. 5.
4. Kansas One Call System Inc. should be notified before excavation (1-800-344-7233).
5. CAUTION; Various pipelines in Sec. 5.
6. Contact landowner for best access and as to location of wood stakes in corn.
7. Set alternate location per representative.

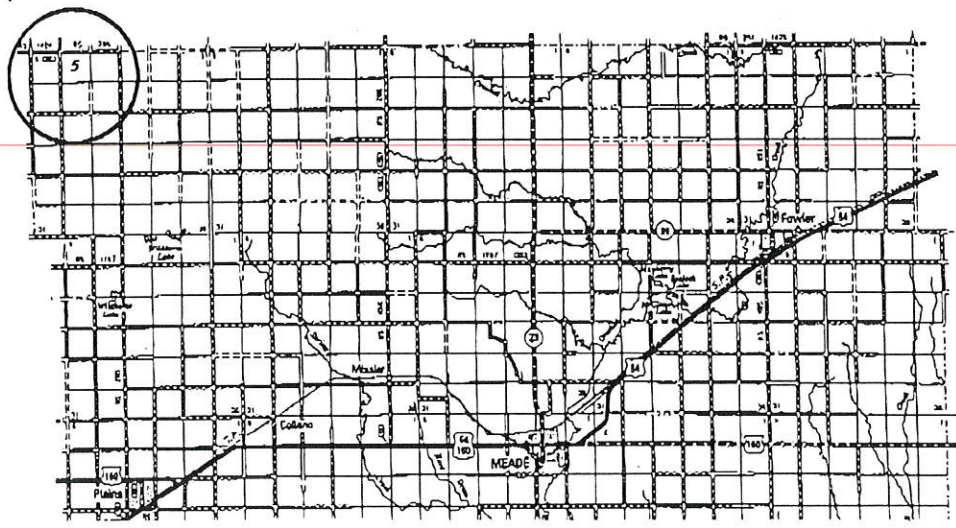
Drillsite Location
Corbin/Rexford "A" #1-5
E. 1/2 SE SW
660' FSL 2310' FWL

Ground Elevation = 2813
 Y = 296650 X = 1382998
 Latitude = 37°27'43"
 Longitude = 100°37'33"

(260' E. of Loc. 1)
 *Alternate Location
~~660' FSL 2570' FWL~~
 Ground Elevation = 2813

Y = 296644 X = 1383258
 State Plane-NAD 27-Kansas South
 (Mapping Grade GPS Used)
 Latitude = 37°27'43"
 Longitude = 100°37'31"
 NAD 83-WGS 84

*Ingress and egress to location as shown on this
 prior to public use, and may not be legally
 opened for public use. Contact landowner,
 tenant and county road department for access.



- Controlling data is based upon the best maps and photographs available to us and upon a regular section of land containing 640 acres.
- Approximate section lines were determined using the normal standard of care of oilfield surveyors practicing in the state of Kansas. The section corners, which establish the precise section lines, were not necessarily located, and the exact location of the drillsite location in the section is not guaranteed. Therefore, the operator securing this service and accepting this plot and all other parties relying thereon agree to hold Central Kansas Oilfield Services, Inc., its officers and employees harmless from all losses, costs and expenses and hold entities released from any liability from incidental or consequential damages.
- Elevations derived from National Geodetic Vertical Datum.

Date July 24, 2013