


WELL COMPARISON SHEET

FORMATION	WARNER #2				HODGINS #1				HODGINS #1				WARNER #1				WARNER #1				
	1836		1841		1836		1837		1832		1836		1837		1832		1832				
	LOG TOPS	SAMPLE TOPS	COMP. CARD	LOG	SMPL.	COMP. CARD	LOG	SMPL.	COMP. CARD	LOG	SMPL.	COMP. CARD	LOG	SMPL.	COMP. CARD	LOG	SMPL.				
	DEPTH	DATUM	DEPTH	DATUM	DEPTH	DATUM	CORR.	CORR.	DEPTH	DATUM	CORR.	CORR.	DEPTH	DATUM	CORR.	CORR.	DEPTH	DATUM	CORR.	CORR.	
ANHYDRITE TOP																					
BASE																					
TARKIO LIME	2334	-498	2336	-500					2330	-494	-4	-6									
HOWARD																		2546	-714		
TOPEKA	2653	-817	2656	-820	2658	-817	+0	-3	2655	-819	+2	-1						2649	-817	+0	-3
HEEBNER SHALE	2928	-1092	2931	-1095	2939	-1098	+6	+3	2931	-1095	+3	+0	2961	-1124	+32	+29		2922	-1090	-2	-5
TORONTO	2951	-1115	2953	-1117	2961	-1120	+5	+3										2942	-1110	-5	-7
DOUGLAS SHALE	2959	-1123	2960	-1124	2972	-1131	+8	+7										2953	-1121	-2	-3
BROWN LIME	3055	-1219	3057	-1221	3069	-1228	+9	+7	3063	-1227	+8	+6	3096	-1259	+40	+38	3050	-1218	-1	-3	
LKC	3081	-1245	3080	-1244	3092	-1251	+6	+7	3087	-1251	+6	+7	3122	-1285	+40	+41	3060	-1228	-17	-16	
BKC	3337	-1501	3342	-1506					3348	-1512	+11	+6	3316	-1479	-22	-27	3328	-1496	-5	-10	
CONGLOMERATE	3359	-1523	3359	-1523	3377	-1536	+13	+13	3377	-1541	+18	+18	3390	-1553	+30	+30					
SIMPSON SHALE	3391	-1555																3340	-1508	-47	
SIMPSON SAND																		3356	-1524		
ARBUCKLE	3412	-1576	3413	-1577	3422	-1581	+5	+4										3397	-1565	-11	-12
RTD			3490	-1654	3474	-1633		-21	3430	-1594		-60	3450	-1613		-41	3399	-1567		-87	
LTD	3488	-1652							3428	-1592	-60										

DST #1 TARKIO SAND 2340' - 2402'

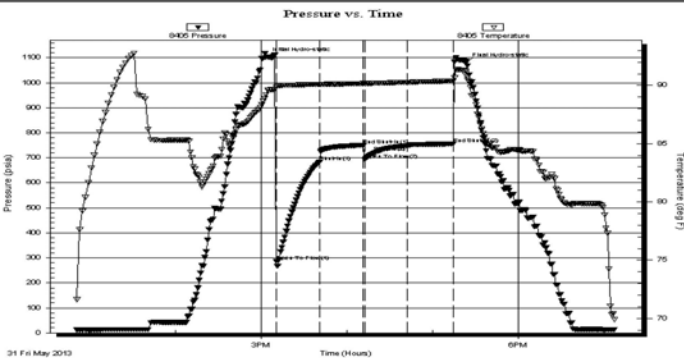
	DRILL STEM TEST REPORT	
	Mike Kelso Oil, Inc. PO Box 467 1125 S. Main Chase Kansas 67524-0467 ATTN: Mike Kelso	15/20s/10w/Rice Warner #2 Job Ticket: 17589 DST#: 1 Test Start: 2013.05.31 @ 12:50:00

GENERAL INFORMATION:

Formation: **Tackio Sand**
 Deviated: No Whipstock: ft (KB)
 Time Tool Opened: 15:10:30
 Time Test Ended: 19:08:00
 Interval: **2340.00 ft (KB) To 2402.00 ft (KB) (TVD)**
 Total Depth: 3402.00 ft (KB) (TVD)
 Hole Diameter: 7.88 inches Hole Condition: Fair
 Test Type: Conventional Bottom Hole (Initial)
 Tester: Shane Konzem
 Unit No: 3330/50/Great Bend
 Reference Elevations: 1836.00 ft (KB)
 1824.00 ft (CF)
 KB to GR/CF: 12.00 ft

Serial #: 8405 Inside
 Press@RunDepth: 747.89 psia @ 2396.72 ft (KB)
 Start Date: 2013.05.31 End Date: 2013.05.31
 Start Time: 12:50:00 End Time: 19:08:00
 Capacity: 5000.00 psia
 Last Calib.: 2013.05.31
 Time On Btm: 2013.05.31 @ 15:03:30
 Time Off Btm: 2013.05.31 @ 17:23:00

TEST COMMENT: 1st Open/ 30 Minutes. Strong blow built to bottom of 5 gallon bucket in 30 seconds.
 1st Shut In/ 30 Minutes. Fair blow back built to 1 1/2 inches in 5 gallon bucket.
 2nd Open/ 30 Minutes. Good blow built to bottom of 5 gallon bucket in 3 1/5 minutes.
 2nd Shut In/ 30 Minutes. No blow back.


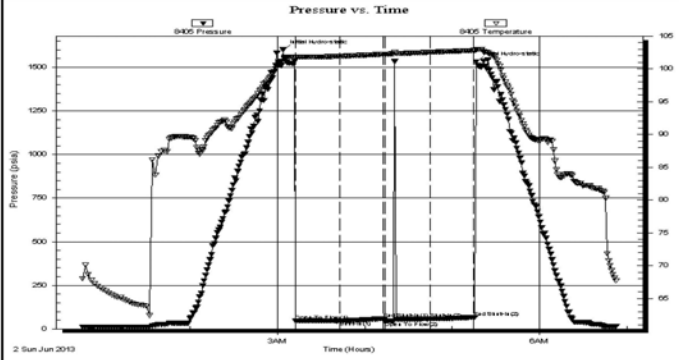


PRESSURE SUMMARY			
Time (Min.)	Pressure (psia)	Temp (deg F)	Annotation
0	1100.81	89.20	Initial Hydro-static
7	285.88	89.81	Open To Flow (1)
38	683.33	90.08	Shut-In(1)
68	750.57	90.16	End Shut-In(1)
69	693.09	90.16	Open To Flow (2)
99	747.89	90.27	Shut-In(2)
131	755.29	90.39	End Shut-In(2)
140	1077.87	91.25	Final Hydro-static


Recovery		
Length (ft)	Description	Volume (bbl)
0.00	No gas to surface	0.00
124.00	100% mud	1.74
310.00	35% mud, 65% water	4.35
1116.00	100% water	15.65
0.00	chloride recov 31000 ppm	0.00
0.00	resist recov .21 ohms at 50 degrees	0.00

Gas Rates		
Choke (inches)	Pressure (psia)	Gas Rate (Mcf/d)

DST #2 LKC D - F 3113' - 3157'

	<p>DRILL STEM TEST REPORT</p> <p>Mike Kelso Oil, Inc.</p> <p>PO Box 467 1125 S. Main Chase Kansas 67524-0467 ATTN: Mike Kelso</p>	<p>15/20s/10w/Rice</p> <p>Warner #2</p> <p>Job Ticket: 17590 DST#: 2</p> <p>Test Start: 2013.06.02 @ 00:45:00</p>																																				
<p>GENERAL INFORMATION:</p> <p>Formation: LKC D-F Deviated: No Whipstock: ft (KB) Time Tool Opened: 03:12:30 Time Test Ended: 06:53:00</p> <p>Interval: 3113.00 ft (KB) To 3157.00 ft (KB) (TVD) Total Depth: 3157.00 ft (KB) (TVD) Hole Diameter: 7.88 inches Hole Condition: Poor</p> <p>Test Type: Conventional Bottom Hole (Initial) Tester: Shane Konzem Unit No: 3330/40/Great Bend</p> <p>Reference Elevations: 1836.00 ft (KB) 1824.00 ft (CF) KB to GR/CF: 12.00 ft</p>																																						
<p>Serial #: 8405 Inside</p> <p>Press@RunDepth: 57.50 psia @ 3153.00 ft (KB) Capacity: 5000.00 psia Start Date: 2013.06.02 End Date: 2013.06.02 Last Calib.: 2013.06.02 Start Time: 00:45:00 End Time: 06:53:00 Time On Btm: 2013.06.02 @ 03:03:30 Time Off Btm: 2013.06.02 @ 05:16:30</p>																																						
<p>TEST COMMENT: 1st Open/ 30 Minutes. Weak blow built to 1 inches in 5 gallon bucket. 1st Shut In/ 30 Minutes. No blow back. 2nd Open/ 30 Minutes. No blow flushed tool after 5 minutes per geo. gained 1 inch blow in 5 gallon bucket. 2nd Shut In/ 30 Minutes. No blow back.</p>																																						
	<p style="text-align: center;">PRESSURE SUMMARY</p> <table border="1" style="width:100%; border-collapse: collapse;"> <thead> <tr> <th>Time (Min.)</th> <th>Pressure (psia)</th> <th>Temp (deg F)</th> <th>Annotation</th> </tr> </thead> <tbody> <tr><td>0</td><td>1600.71</td><td>101.20</td><td>Initial Hydro-static</td></tr> <tr><td>9</td><td>45.68</td><td>101.75</td><td>Open To Flow (1)</td></tr> <tr><td>39</td><td>46.16</td><td>101.93</td><td>Shut-In(1)</td></tr> <tr><td>69</td><td>59.14</td><td>102.23</td><td>End Shut-In(1)</td></tr> <tr><td>71</td><td>43.92</td><td>102.24</td><td>Open To Flow (2)</td></tr> <tr><td>101</td><td>57.50</td><td>102.54</td><td>Shut-In(2)</td></tr> <tr><td>131</td><td>66.50</td><td>102.81</td><td>End Shut-In(2)</td></tr> <tr><td>133</td><td>1532.94</td><td>102.93</td><td>Final Hydro-static</td></tr> </tbody> </table>		Time (Min.)	Pressure (psia)	Temp (deg F)	Annotation	0	1600.71	101.20	Initial Hydro-static	9	45.68	101.75	Open To Flow (1)	39	46.16	101.93	Shut-In(1)	69	59.14	102.23	End Shut-In(1)	71	43.92	102.24	Open To Flow (2)	101	57.50	102.54	Shut-In(2)	131	66.50	102.81	End Shut-In(2)	133	1532.94	102.93	Final Hydro-static
Time (Min.)	Pressure (psia)	Temp (deg F)	Annotation																																			
0	1600.71	101.20	Initial Hydro-static																																			
9	45.68	101.75	Open To Flow (1)																																			
39	46.16	101.93	Shut-In(1)																																			
69	59.14	102.23	End Shut-In(1)																																			
71	43.92	102.24	Open To Flow (2)																																			
101	57.50	102.54	Shut-In(2)																																			
131	66.50	102.81	End Shut-In(2)																																			
133	1532.94	102.93	Final Hydro-static																																			
<p style="text-align: center;">Recovery</p> <table border="1" style="width:100%; border-collapse: collapse;"> <thead> <tr> <th>Length (ft)</th> <th>Description</th> <th>Volume (bbl)</th> </tr> </thead> <tbody> <tr><td>30.00</td><td>100% mud</td><td>0.42</td></tr> <tr><td> </td><td> </td><td> </td></tr> <tr><td> </td><td> </td><td> </td></tr> <tr><td> </td><td> </td><td> </td></tr> <tr><td> </td><td> </td><td> </td></tr> </tbody> </table>	Length (ft)	Description	Volume (bbl)	30.00	100% mud	0.42													<p style="text-align: center;">Gas Rates</p> <table border="1" style="width:100%; border-collapse: collapse;"> <thead> <tr> <th>Choke (inches)</th> <th>Pressure (psia)</th> <th>Gas Rate (Mcf/d)</th> </tr> </thead> <tbody> <tr><td> </td><td> </td><td> </td></tr> <tr><td> </td><td> </td><td> </td></tr> <tr><td> </td><td> </td><td> </td></tr> </tbody> </table>		Choke (inches)	Pressure (psia)	Gas Rate (Mcf/d)															
Length (ft)	Description	Volume (bbl)																																				
30.00	100% mud	0.42																																				
Choke (inches)	Pressure (psia)	Gas Rate (Mcf/d)																																				

DST #3 CONGLOMERATE - SIMPSON SAND 3338' - 3390'

	<p>DRILL STEM TEST REPORT</p> <p>Mike Kelso Oil, Inc.</p> <p>PO Box 467 1125 S. Main Chase Kansas 67524-0467 ATTN: Mike Kelso</p>	<p>15/20s/10w/Rice</p> <p>Warner #2</p> <p>Job Ticket: 17591 DST#: 3</p> <p>Test Start: 2013.06.03 @ 01:35:00</p>
<p>GENERAL INFORMATION:</p> <p>Formation: Congl./ Simpson Sand Deviated: No Whipstock: ft (KB) Time Tool Opened: 03:42:30</p> <p>Test Type: Conventional Bottom Hole (Initial) Tester: Shane Konzem</p>		

Time Test Ended: 07:47:30

Unit No: 3330/40/Great Bend

Interval: 3338.00 ft (KB) To 3390.00 ft (KB) (TVD)
 Total Depth: 3390.00 ft (KB) (TVD)
 Hole Diameter: 7.88 inches Hole Condition: Poor

Reference Elevations: 1836.00 ft (KB)
 1824.00 ft (CF)
 KB to GR/CF: 12.00 ft

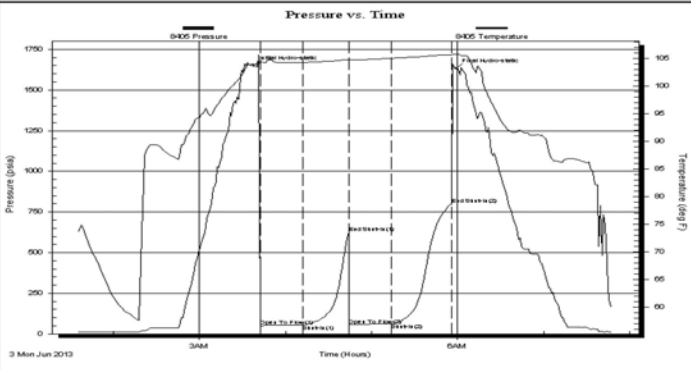
Serial #: 8405

Inside

Press@RunDepth: 62.53 psia @ 3385.98 ft (KB)
 Start Date: 2013.06.03 End Date: 2013.06.03
 Start Time: 01:35:00 End Time: 07:47:30

Capacity: 5000.00 psia
 Last Calib.: 2013.06.03
 Time On Btm: 2013.06.03 @ 03:37:30
 Time Off Btm: 2013.06.03 @ 05:58:30

TEST COMMENT: 1st Open/ 30 Minutes. Fair blow built to 6 inches in 5 gallon bucket.
 1st Shut-in/ 30 Minutes. No blow back.
 2nd Open/ 30 Minutes. Fair blow built to 3 inches in 5 gallon bucket.
 2nd Shut In/ 30 Minutes. No blow back.



PRESSURE SUMMARY			
Time (Min.)	Pressure (psia)	Temp (deg F)	Annotation
0	1647.63	103.89	Initial Hydro-static
5	50.70	104.30	Open To Flow (1)
35	55.63	104.23	Shut-In(1)
67	622.40	104.76	End Shut-In(1)
67	56.32	104.66	Open To Flow (2)
97	62.53	104.99	Shut-In(2)
138	799.20	105.62	End Shut-In(2)
141	1631.46	105.71	Final Hydro-static

Recovery		
Length (ft)	Description	Volume (bbl)
0.00	120 feet gas	0.00
10.00	clean oil	0.14
30.00	40% oil, 60% mud	0.42

Gas Rates			
	Choke (inches)	Pressure (psia)	Gas Rate (Mcf/d)

Superior Testers Enterprises LLC

Ref. No: 17591

Printed: 2013.06.03 @ 08:04:56

ROCK TYPES

- Congl
- Lmst fw7>
- shale, gry
- shale, red
- Dolprim
- shale, grn
- Carbon Sh
- Ss

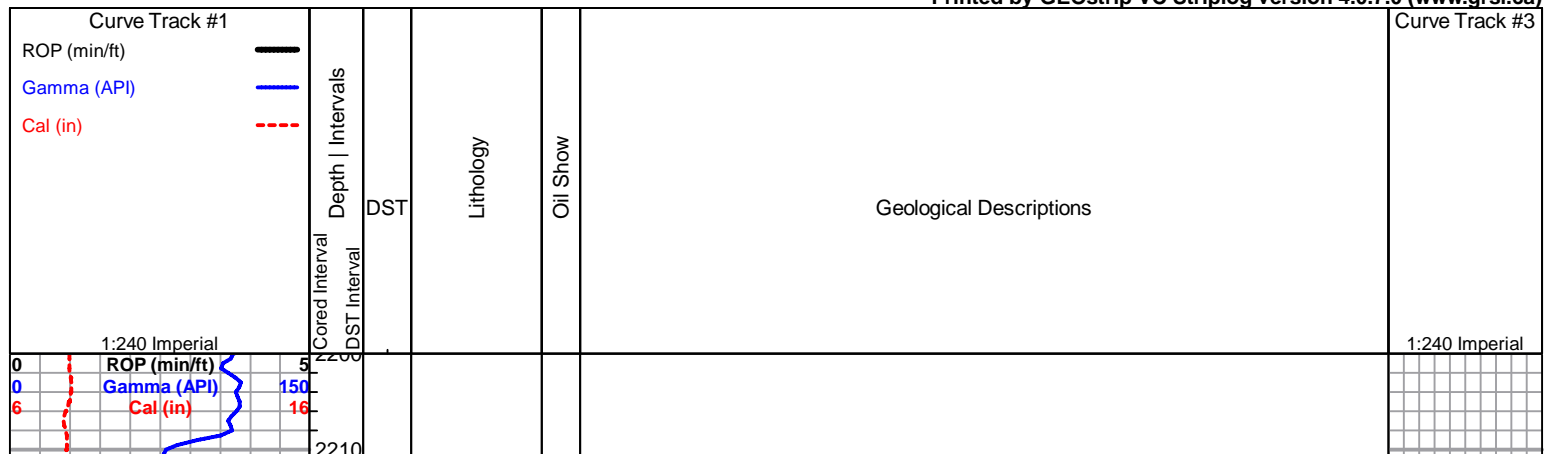
ACCESSORIES

FOSSIL
 ◊ Oolite

OTHER SYMBOLS

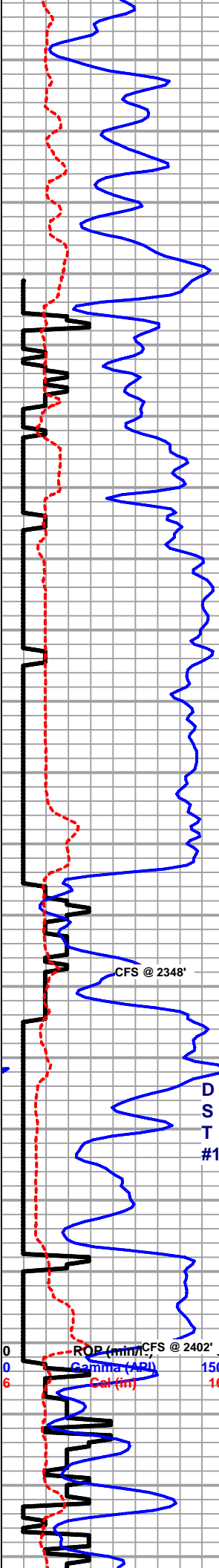
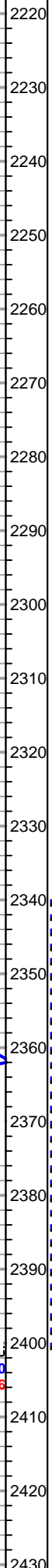
DST
 DST Int
 DST alt

Printed by GEOstrip VC Striplog version 4.0.7.0 (www.grsi.ca)



**1' DRILL TIME FROM 2250' RTD
 10' WET/DRY SAMPLES FROM 2300' - RTD
 GEOLOGICAL SUPERVISION BY JEFF LAWLER FROM 2300' - RTD**

8 5/8" SURFACE PIPE @ 263' SURVEY 1/4 dgr,

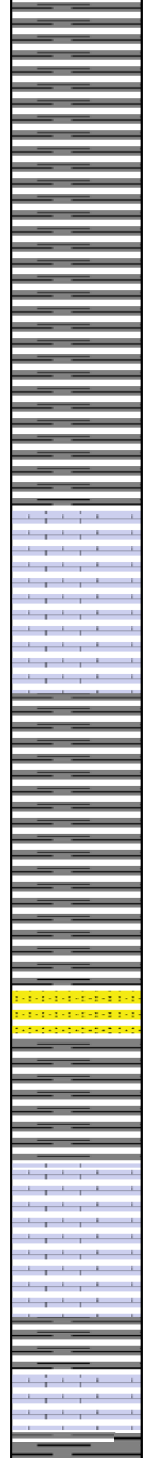


CFS @ 2348'

D
S
T

1

ROP (min)/CFS @ 2402'
 Gamma (API) 150
 Cal (ft) 16



Sh/Ss- Gray, soft sandy lime and silty, Ss- Semi-Clear to Frosted, F-Med Grn, mod. well dev. clusters, sub-rounded, friable, sl speckled w/ glauconite, lightly cemented, LT STN, FR GSY SHN, PR-FR SFO, NO ODR, LIGHT GRAVITY STN, LT YLW FLOR, SOME W/ STRM WET CUT

TARKIO LM 2336' (-500) E-LOG 2334' (-498) Lm- Cream Tan, FXLN, fsl & sl oolitic, dense, well cemented, some sl chalky in part, sctrd XLN porosity, sl limey, barren

Sh- Gray, silty & soft, limey, speckled w/ dark minerals, Ss- Lm Green, hvy glauconite speckling, cleaning w/ depth, some fused some friable

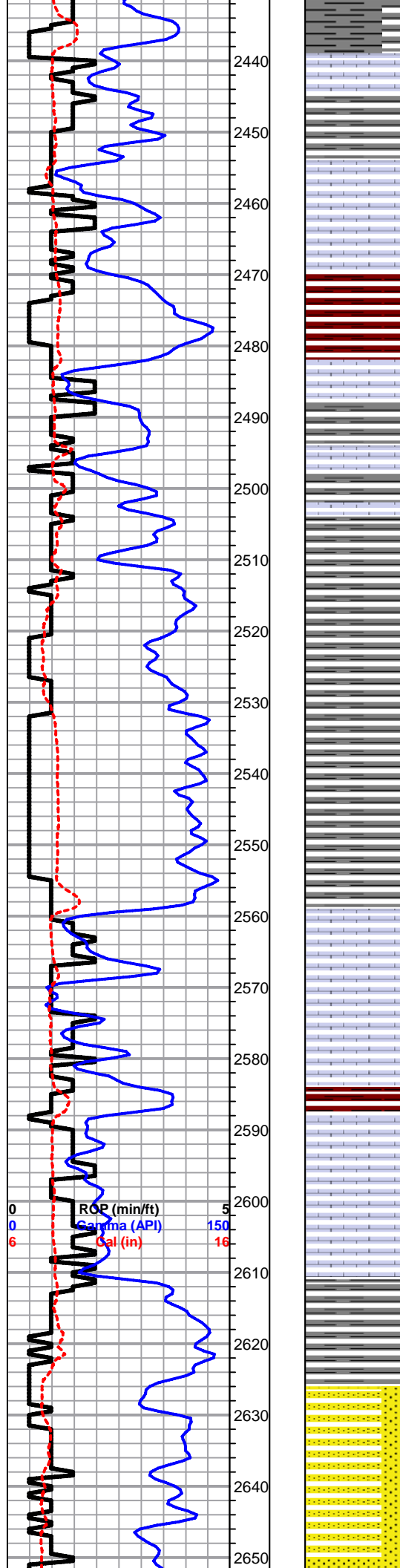
SHORT TRIP
 STRAP -1.03'
 SURVEY 3/4 dgr.

DST #1
 TARKIO SAND
 2340' - 2402'

Ss- Clear to Semi-Frosted, grading into mostly clean, clear, sub-rounded Med Grn, vry friable, lightly micaceous, LT SCTRD STN, SL GSY SHEEN, SL LT SFO, NO ODR, LT YLW FLSH HALO FLOR.

Lm- Cream Tan, FXLN, dense, well cemented, sl chalky in part, sctrd micro XLN porosity, barren w/ interbedded shale lenses

Lm- Tan, FXLN, fsl high-energy bioclastic mix grading into sandy lime & gummy argillaceous shale



Lm- Ivory Off White, VFXLN Vf Grn, dense, tight mix, some lithographic, clean, all w/ minimal vis. porosity, barren

Sh- Drk & Lt Gray Lm Green Maroon, mix of soft sandy lime, silty & calcareous, & dense & blocky, some sl gummy argillaceous clumps

Lm- Gray Tan, high energy bio-clastic mix w/ many fsl fragments, dense, dense to sctrd micro XLN & XLN porosity, trashy

Sh/Ss- Gray Maroon White, chalky & calcareous, vry silty, soft, calcareous cemented Ss clusters, well cemented, sl unconsolidated, NS

Lm- Tan Brown, trashy bio-clastic mix w/ fsl fragments

Lm- Cream Off White, FXLN, dense, well cemented, sl massive, fsl, sctrd micro XLN porosity, sctrd secondary XLN porosity

Lm- Brown Tan, FXLN, sl unconsolidated & sandy, micaceous, high-energy w/ fsl fragments

Sh- Lt & Drk Gray, much silty & calcareous, gummy argillaceous clumps, some sl sandy lime & shaley Ss

Lm- Cream, Vf Grn, vry dense, loosely cemented & crumbley, no vis. porosity, barren

Lm- Cream Off White, FXLN, dense, gritty, vry well cemented sl dolomitic cherty ls, no vis. porosity, rare secondary recrystallization veins

Sh- White Maroon, much gummy argillaceous chalk, gritty & earthy

Lm- Cream Ivory, Vf-Fn Grn, dense, vry well cemented, sl chalky in part, no vis. porosity, barren

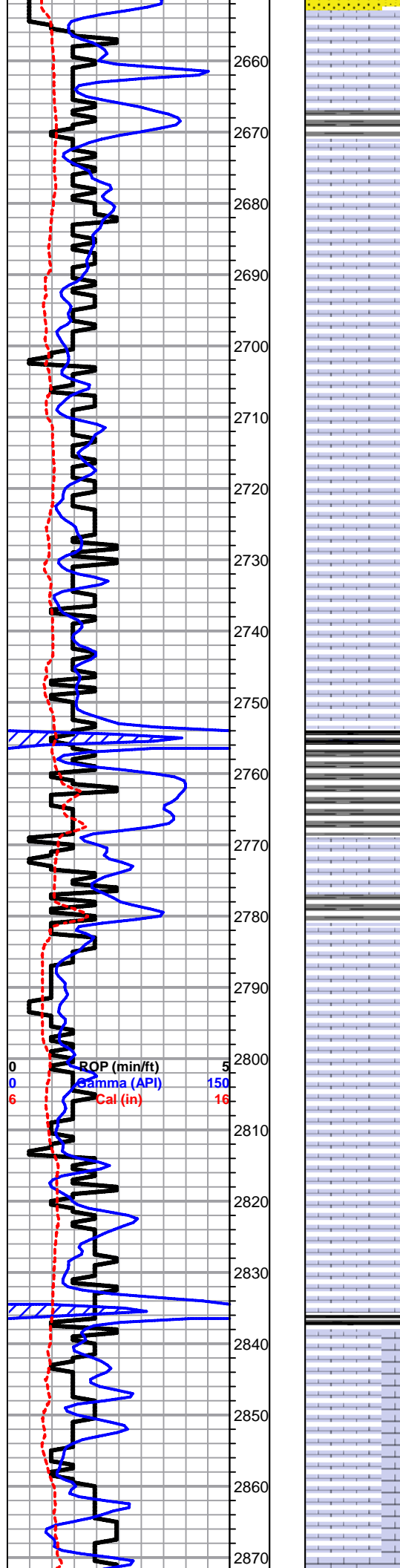
Lm- Cream Tan, VFXLN, dense, well cemented cherty ls

Sh/Ss- Lt & Drk Gray, soft silty sandy lime

Sh/Ss- Sh A/A, sl unconsolidated & micaceous Ss, fn grn, mod. sorted, loosely cemented, NS

Ss- Grading into cleaner, consolidated Ss, loosely cemented, mod. sorted, fn grn, clusters, NS

TOPEKA 2656' (-820) E-LOG 2653' (-817) Lm- Cream Tan, Vg Grn, dense, vry well cemented, tight w/ minimal vis. porosity, vry clean, barren



Lm- Buff Tan Cream, VFXLN, dense, well cemented, sl cherty ls, no vis. porosity

Lm- Tan Drk Gray, VF-FXLN, dense, vry well cemented, sl fsl, sctrd XLN & dense fenestral porosity, few fsl fragments

Lm- Cream Tan, FXLN, mostly dense well cemented fsl cherry ls, few chips w/ soft chalky cementation

Lm- White, Vf Grn, grading into more mud supported chalky cementation A/A

Lm- Lt Gray, FXLN, loosely cemented bio-clastic fsl mix, sctrd XLN porosity, sl trashy

Lm- Cream Ivory, FXLN, massive, gritty sl dolomitic cherty ls, no vis. to minimal vis. porosity, tight

Lm- A/A w/ few chips of fsl black chert

Sh- Black Gray, fissile & carbonaceous, gummy argillaceous clumps

Lm- Cream Lt Gray, FXLN, vry fsl, dense, vry well cemented, mostly tight w/ minimal vis. porosity, barren

Lm- Tan Buff, Fn Grn, dense, well cemented, gritty, minimal vis. porosity, massive

Sh- White Lt Gray, much soft white chalk & silty gray shale

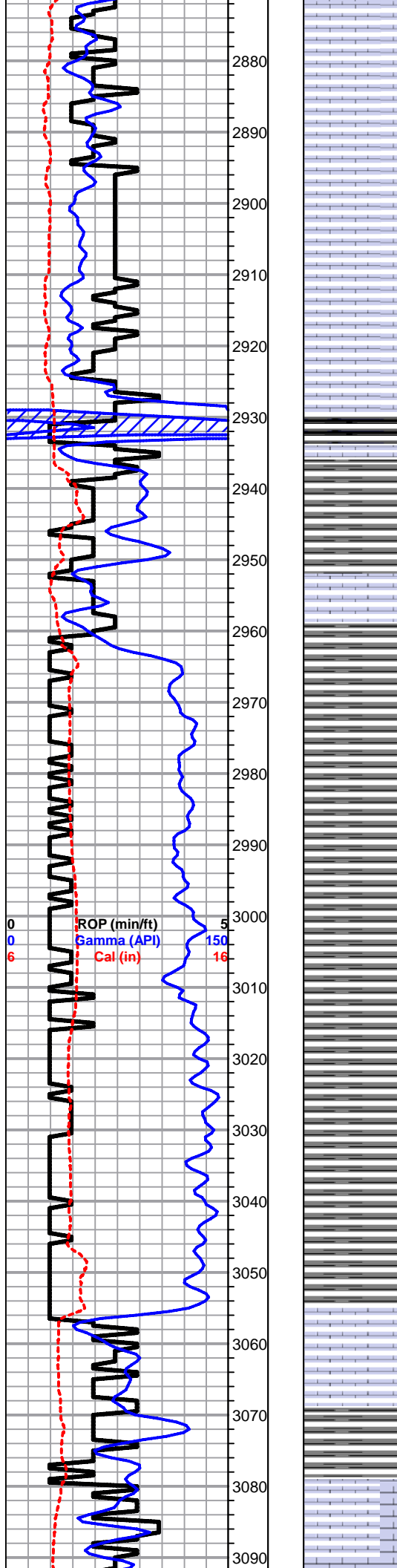
Lm- Cream Off White, FXLN, fsl, dense, sl chalky in part, well cemented, poorly dev., some sl dolomitic ls, barren

Lm- Buff, VF-FXLN, dense, semi-brittle, poorly dev. w/ sctrd micro XLN & XLN porosity

Lm- Cream Off White, Fn Grn, dense, loosely cemented mud supported, chalky & crumbley, sctrd mottling

Sh/Chert- Black Gray, fissile, well compacted, carbonaceous, silty & calcareous, black fresh bedded chert

Lm/Chert- Cream Off White, Fn Grn, fsl, mod. dev. w/ sctrd fn ppt porosity, gray & tan fresh



bedded chert

Lm- Buff, Fn Grn, dense, sl chalky in part, mod. dev. w/ vry fn interparticle porosity, few pcs sl dolomitic, massive, secondary XLN porosity, barren

Lm- Cream Off White, Vf Grn, dense, chalky & crumbly, sctrd mottling

Lm- Cream Off White, FXLN, dense, well cemented, poorly dev. cherty ls & dolomitic chert, mostly tight w/ minimal vis. porosity

HEEBNER 2931' (-1095) E-LOG 2928' (-1092) Sh- Black Drk Gray Maroon, fissile, soft, carbonaceous, dense & blocky, gritty & earthy

TORONTO 2953' (-1117) E-LOG 2951' (-1115) Lm- Cream Off White, F-Med XLN, dense, well cemented & poorly dev. few pcs of sl dolomitic ls, sctrd XLN porosity, few w/ med XLN secondary recrystallization porosity, barren, sctrd mottling

DOUGLAS SHALE 2960' (-1124) E-LOG 2959' (-1123) Sh- Lt Gray Maroon White, many gummy argillaceous clumps

Sh- A/A, some sandy lime

Sh- Lt Gray, silty, sandy lime & shaley Ss, micaceous

Sh- Lt Gray, soft, silty & calcareous, some gummy argillaceous clumps

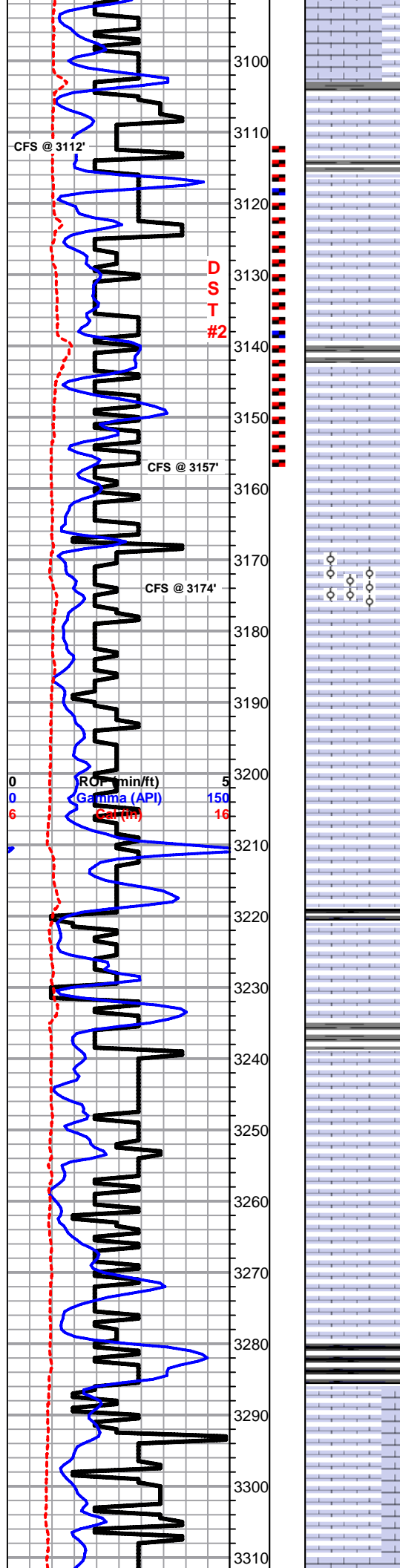
Sh- A/A, w/ grading gritty & earthy maroon pcs

Sh- Lt Gray, much soft & silty, calcareous, gummy argillaceous clumps

BROWN LIME 3057' (-1221) E-LOG 3055' (-1219) Lm- VF-FXLN, dense, semi-brittle, bioclastic, fsl fragments, high-energy, trashy

Sh- Lt & Drk Gray, mostly silty & calcareous, few pcs of gritty & earthy maroon sh

LKC 3080' (-1244) E-LOG 3081' (-1245) Lm- Tan Cream, FXLN, dense, semi-brittle, fsl, poorly dev. w/ sctrd micro XLN & XLN porosity, few pcs w/ dense secondary Med XLN porosity, sl dolomitic, all barren



Lm- Cream Tan, VF-FXLN, dense, vry well cemented, poorly dev. w/ sctrd micro XLN & XLN porosity, brittle, some sl cherty ls, barren

Lm- Ivory, VF-FXLN, dense, poorly dev. sl oolitic, well cemented & brittle, sctrd micro XLN porosity

Lm- Cream Off White, VF-FXLN, dense, semi-brittle, well cemented, poorly dev. w/ sctrd XLN porosity, pcs w/ sctrd dense XLN secondary porosity veins, 1 PCS W/ VRY WK SPOTTY STN, NO SFO, WK ODR

Lm- Cream Off White, F-Med XLN, fsl w/ interbedded fusulinids, well cemented, sl dev. w/ XLN & sctrd fn ppt porosity, SCTRD LT STN, FEW PCS W/ FLAKEY STN, SL SFO, FR ODR, SLW STRM WET CUT, UPON CRUSH BRT YLW FLOR.

Sh- Lt Gray, silty & soft, sl calcareous, few gummy argillaceous clumps

Lm- Gray Cream, mix of Fn Grn, sl chalky in part, loosely cemented, sl sandy, mostly consistant interparticle porosity & FXLN, dense, well cemented, poorly dev. w/ sctrd XLN porosity, FEW PCS W/ SL GSY SHN, NO SFO, FNT ODR

Lm- Tan Cream, FXLN, dense, well cemented, poorly dev. oolitic biomicrite, densely to sparsely packed med. oolites, minimal vis. porosity, few sl chalky matrix, barren, tight

Lm- Buff Cream, VF-FXLN Fn Grn, dense poorly dev. mix of clean, well cemented, VF-FXLN w/ minimal vis. porosity & mud supported cementation, chalky in part, soft & loosely cemented w/ vr poor interparticle porosity, barren

Lm- Cream Tan, Fn Grn, dense, some loosely cemented & sl crumbley, some well cemented, sl chalky in part, sl sctrd mottling, barren

Sh- Bkck Lt & Drk Gray Lm Gray, thin fissile carbonaceous lense, mostly soft & silty and dense & blocky, some sl waxy

Lm- Tan, VF-FXLN, dense, vry well cemented, clean, tight w/ sctrd micro XLN porosity, barren, 1-2 PCS W/ SL GSY SHN, NO STN, NO SFO, NO ODR

Sh- Lt Gray Lm Green Maroon, silty & soft, dense & blocky, some sl waxy & some silty calcareous lm green, gritty & earthy

Lm- Cream Buff, Vf Grn, dense, vry well cemented algal ls, lithographic w/o vis. porosity, barren

Lm- Cream Off White, FXLN, oolitic, sl - poorly dev. most densely packed small oolites, well cemented w/ sctrd micro XLN porosity, few pcs w/ sctrd - rare fn ppt porosity, FEW PCS W/ WK SPOTTY STN, NO SFO, FNT ODR, WK YLW FLOR, NO STRM WT CUT

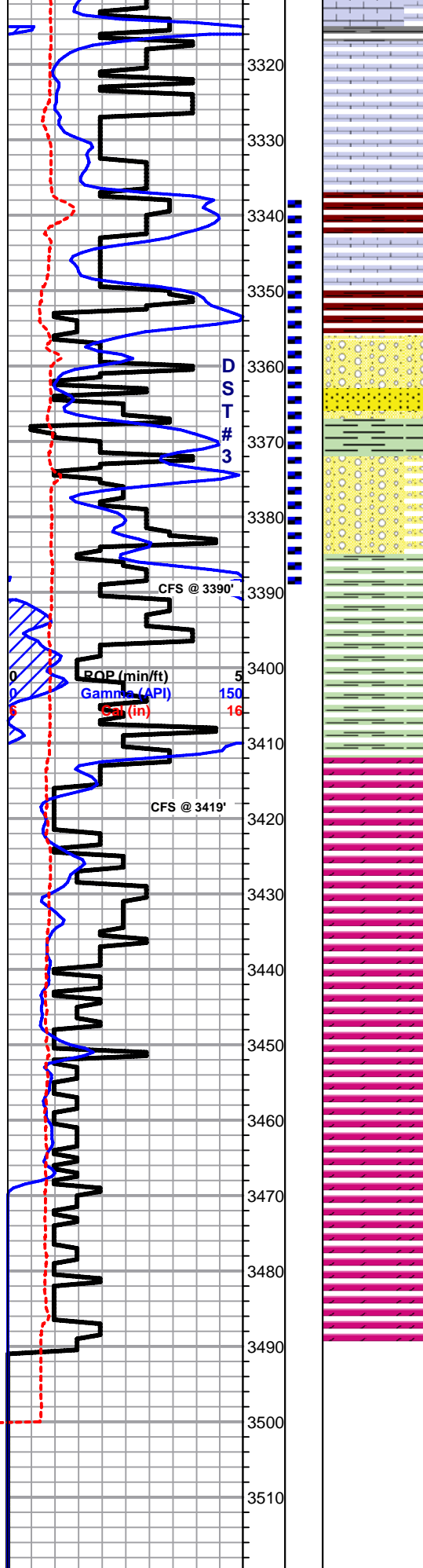
Lm- White Off White, Vf Grn, dense, loosely cemented mud supported matrix, chalky, soft, vry clean, barren

Sh- Black Maroon Lm Green Drk Gray, vry fissile, carbonaceous, sl pyritic, waxy & soft, some massive, gritty, & earthy, few dense & blocky

Lm- White Off White, Fn Grn, oolitic, sl dev. w/ sctrd fn ppt porosity, WK SPOTTY STN, SL SFO, NO ODR

Lm- Cream Tan, VF-FXLN, dense, well cemented, mostly tight w/ minimal vis. to sctrd micro XLN porosity, barren

SUREVEY
DST #2
LKC D - F
3113' - 3157'



Sh- Lt Gray Lm Green Brown Maroon, soft, sl gummy, silty, gritty & earthy

Lm- Cream Off White, FXLN Vf Grn, tight poorly dev. mix, mostly well cemented, minimal vis. porosity, some vry clean, all barren

BKC 3342' (-1506) E-LOG 3337' (-1501) Sh- Maroon Lt Gray, much soft gritty & earthy, few sl gummy clumps

Sh- Maroon, Lm Green Mustard Yellow, waxy, massive, sl pebbly, some dense & slick

Conglomerate- Ivory w/ Red Tint, VF-FXLN, dense, vry well cemented, some chert & cherty ls, tight w/ no vis. porosity

Sh/Sand- Lm Green, sl waxy, some sandy shale/sandy lime, some soft & calcareous Sand-Clear to Semi-Frosted, Poor-Mod sorted w/ Fn-Med Grn, sub-angular to sub-rounded, most loosely cemented & friable, SCTRD TO SUB-SAT DRK STN, PR-FR SFO, FEW W/ FNT ODR

Conglomerate- Sand, Mustard Yellow Lm Green, shaley sand A/A, few chips of sandy chert, mostly well cemented

SIMPSON SHALE E-LOG 3391' (-1555) Sh- Mint Green, vry waxy, slick, dense & blocky, soft sandy lime & lm green wash

ARBUCKLE 3413' (-1577) E-LOG 3142' (-1576) Dolomite- Tan Buff, FXLN, mostly dense & well cemented w/ sctrd XLN porosity, few chips mod. dev. A/A, loosely cemented & sl crumbley, w/ mostly consistant XLN porosity, LT BRWN STN, SL-FR SFO, FR ODR

Dolomite- Buff White, F-Med XLN, mix of FXLN, limey oolitic/sl oomollic dolomite, sl dev. w/ rare to sctrd skeletal dissolution, few chips of oolitic fresh bedded chert, few med XLN, loosely cemented, dev. w/ mostly consistant fn ppt porosity, SOME W/ SCTRD DRK STN, FR SFO, FO ODR

Dolo- White Off White, Med-Crs XLN, well dev., friable, mostly consistant ppt porosity throughout, SCTRD STN, SL SFO, FR ODR

Dolo- Ivory Lt Pink, VF-FXLN, dense, poorly dev. well cemented w/ sctrd XLN porosity, some sl cherty dolomite, all tight and barren

Dolo-Cream Lt Pink, Med-Crs XLN, most well dev. w/ consistant ppt porosity & euهدral rhombs, loosely cemented, massive, barren

Dolo- A/A w/ soft white chalk, Med XLN, sl limey, soft & crumbley, sl shaley, barren

Dolo- Tan Buff, Med-Crs XLN, well dev., sub-euhedral rhombs, massive, well cemented, barren

RTD 3490' (-1654) LTD 3488 (-1652) @ 15:54 6/3/2013

**DST #3
CONGLOMERATE
3338' - 3390'**