



**TRILOBITE
TESTING, INC.**

DRILL STEM TEST REPORT

Pauley Oil
314 5th. St.
Clafin, KS 67525
ATTN: Wyatt Urban

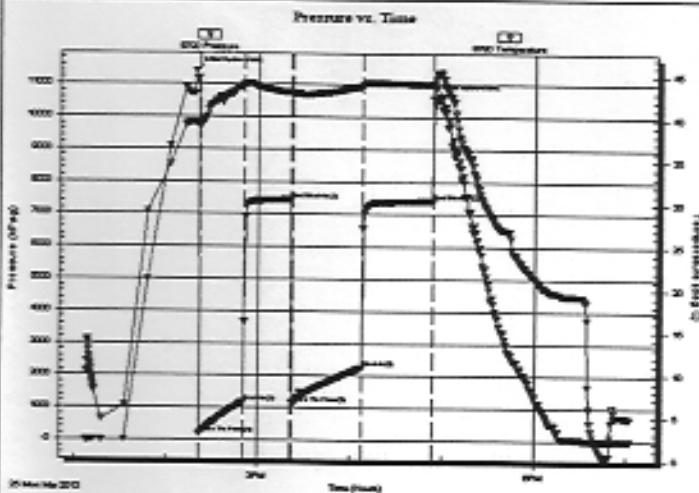
15-17s-8w Ellsworth, KS
S. Rolfs #4
Job Ticket: 50869 DST#: 3
Test Start: 2013.03.25 @ 13:07:27

GENERAL INFORMATION:

Formation: **Arbuckle**
Deviated: No Whipstock: ft (KB)
Time Tool Opened: 14:21:42
Time Test Ended: 19:02:27
Interval: 3177.00 ft (KB) To 3277.00 ft (KB) (TVD)
Total Depth: 3277.00 ft (KB) (TVD)
Hole Diameter: 7.88 inches Hole Condition: Fair
Test Type: Conventional Bottom Hole (Reset)
Tester: Ryan Reynolds
Unit No: 48
Reference Elevations: 1770.00 ft (KB)
1757.00 ft (CP)
KB to GRICF: 13.00 ft

Serial #: 8790 Inside
Press@RunDepth: 2244.77 kPag @ 3178.00 ft (KB)
Start Date: 2013.03.25 End Date: 2013.03.25
Start Time: 13:07:32 End Time: 19:02:26
Capacity: 55000.00 kPag
Last Calib.: 2013.03.25
Time On Btm: 2013.03.25 @ 14:19:27
Time Off Btm: 2013.03.25 @ 16:54:12

TEST COMMENT: F: Strong blow . BoB 8 min. No GTS.
IS: No blow
FF: Strong blow . BOB 9 min. No GTS.
FS: No blow



PRESSURE SUMMARY

Time (Min.)	Pressure (kPag)	Temp (deg C)	Annotation
0	11391.8	39.55	Initial Hydro-static
3	172.28	39.01	Open To Flow (1)
32	1166.92	43.93	Shut-in(1)
62	7433.64	43.01	End Shut-in(1)
64	1130.47	42.86	Open To Flow (2)
108	2244.77	43.77	Shut-in(2)
154	7408.35	44.01	End Shut-in(2)
155	10576.7	44.15	Final Hydro-static

Recovery

Length (ft)	Description	Volume (bbl)
225.00	SLI WCMGO 1%wtr, 19%mud, 20%gas, 3.16oil	
255.00	WCGMO 5%wtr, 25%gas, 30%mud, 40%3.58	
285.00	WCGOM 5%wtr, 20%gas, 30%oil, 45%4.00	
0.00	30' GP	0.00

* Recovery from multiple tests

Gas Rates

Choke (inches)	Pressure (kPag)	Gas Rate (Mc/d)
----------------	-----------------	-----------------